

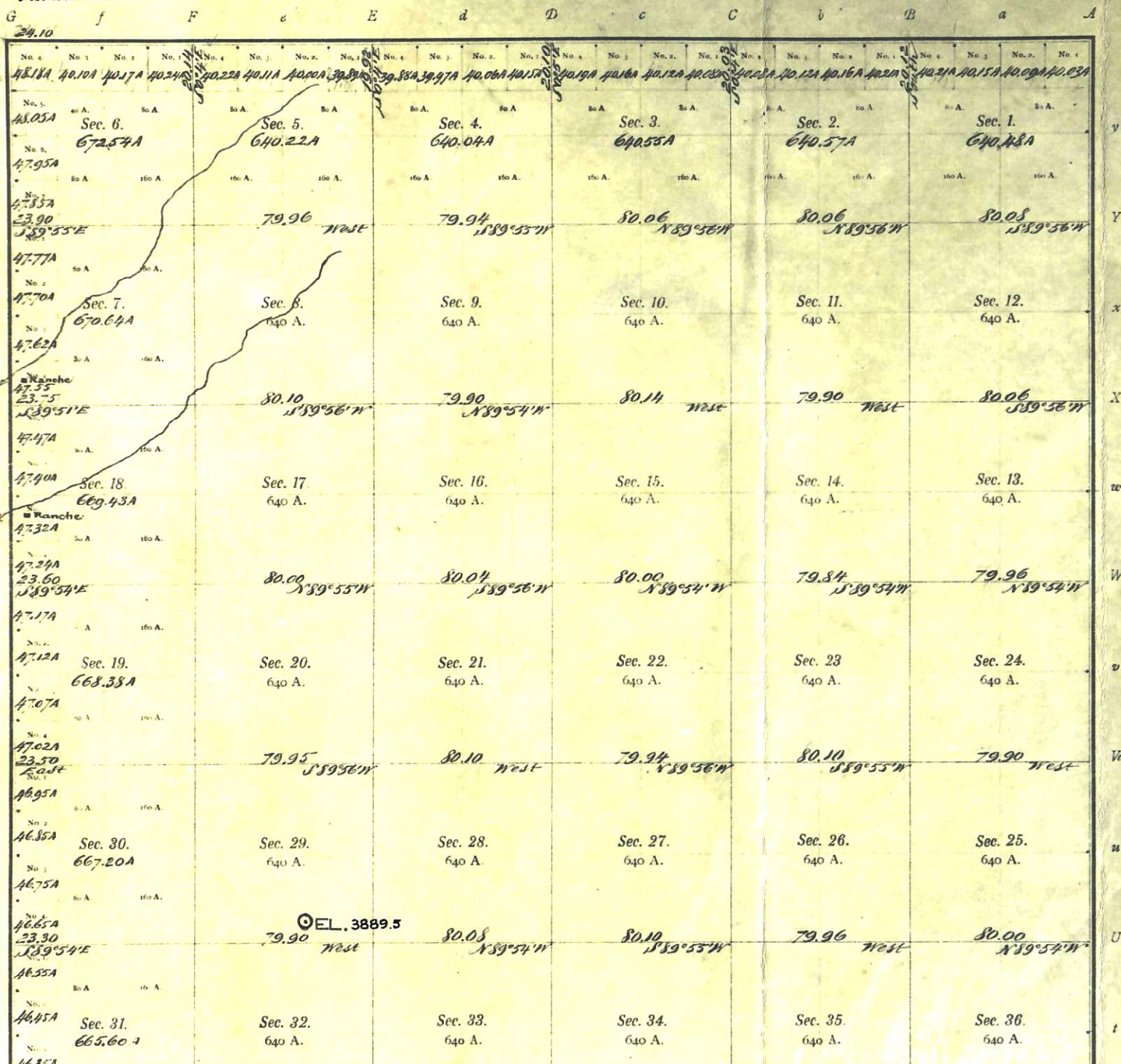
Township No. 19 South Range No. 45 West of the Sixth Principal Meridian.



01341764

BEST IMAGE
AVAILABLE

KIOWA COUNTY, COLORADO



I, ROLAND EDER, A REGISTERED LAND SURVEYOR, DO HEREBY CERTIFY THAT I USED THE GOVERNMENT CORNER STONE LOCATED AT THE NE CORNER OF SECTION 8 T19S R45W AS A POINT OF BEGINNING. AND THUS STAKED LOCATION MARKED "O" IN THE CENTER OF SW OF SE SECTION 29 T19S R45W FOR THE WARREN BRADSHAW EXPLORATION CO.

ALL SURVEYING WAS DONE IN ACCORDANCE WITH THIS PLAT. THIS SAID PLAT IS A CORRECT COPY OF THE ORIGINAL PLAT ON FILE IN THE SURVEY OFFICE, U.S. DEPT. OF INTERIOR, BUREAU LAND MANAGEMENT, DENVER, COLORADO.

ELEVATION ESTABLISHED FROM THE U.S.C. & G.S. BENCH MARK Z-78.

SURVEYED ON THIS 12th DAY OF APRIL 1955.



Roland Eder
KIOWA COUNTY
SURVEYOR