

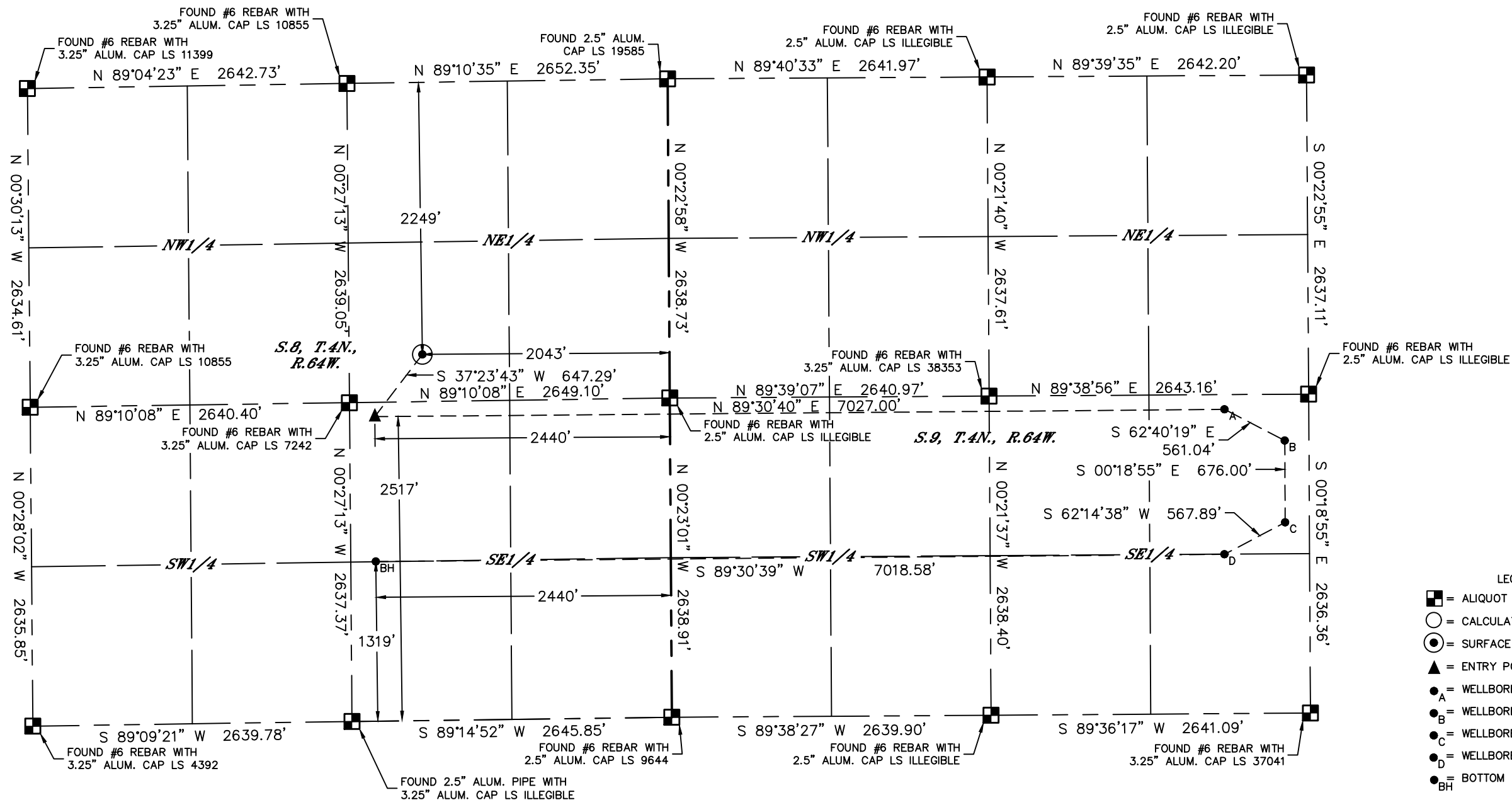


Lat40°, Inc. 6250 W. 10th Street, Unit 2, Greeley, CO 970-515-5294

WELL LOCATION CERTIFICATE

HEN 12NHS
PDC ENERGY

SECTION: 8
TOWNSHIP: 4N
RANGE: 64W
6TH. P.M.
WELD COUNTY, CO



- LEGEND**
- = ALIQUOT MONUMENT AS DESCRIBED
 - = CALCULATED POSITION
 - ⊙ = SURFACE HOLE LOCATION (SHL)
 - ▲ = ENTRY POINT LOCATION (EP)
 - = WELLBORE START TURN
 - _A = WELLBORE EXIST SPACING UNIT
 - _B = WELLBORE ENTER SPACING UNIT
 - _C = WELLBORE END TURN
 - _D = WELLBORE END TURN
 - _{BH} = BOTTOM HOLE LOCATION (BHL)

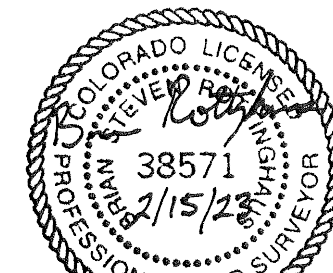
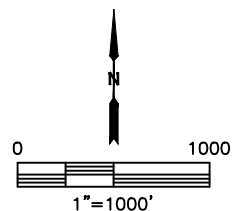
CLIENT: PDC ENERGY, INC.				LANDMAN: DARIN SPITZER					
INSTRUMENT OPERATOR: CASEY KOHOUT				SURVEY DATE: 10/14/2020		SURFACE USE: RANGE LAND			
SHL FOOTAGE	SHL LAT°	SHL LONG°	SHL PDOP	SHL ELEV (FT.)	SHL 1/4/1/4	SHL S-T-R			
2249	FNL	2043	FEL	40.32796	-104.57234	1.5	4779	SWNE	8-4-64

BHL FOOTAGE	BHL LAT°	BHL LONG°	BHL S-T-R	EP FOOTAGE	EP LAT°	EP LONG°	EP S-T-R						
1319	FSL	2440	FEL	40.32328	-104.57379	8-4-64	2517	FNL	2440	FEL	40.32656	-104.57377	8-4-64

POINT A	POINT A LAT°	POINT A LONG°	POINT A S-T-R	POINT B	POINT B LAT°	POINT B LONG°	POINT B S-T-R						
2515	FSL	697	FEL	40.32652	-104.54858	9-4-64	2254	FSL	200	FEL	40.32580	-104.54680	9-4-64

POINT C	POINT C LAT°	POINT C LONG°	POINT C S-T-R	POINT D	POINT D LAT°	POINT D LONG°	POINT D S-T-R						
1578	FSL	200	FEL	40.32395	-104.54681	9-4-64	1317	FSL	704	FEL	40.32324	-104.54862	9-4-64

- NOTE:**
- Bearings shown are Grid Bearings of the Colorado State Plane Coordinate System, North Zone, North American Datum 1983. The lined dimensions as contained herein are based upon the "U.S. Survey Foot."
 - Distances to section lines measured at 90 degrees from said section lines.
 - Ground elevations are based on an observed GPS elevation (NAVD 1988 DATUM).
 - Latitude and Longitude shown are (NAD 83 DATUM).
 - IMPROVEMENTS: See LOCATION DRAWING for all visible improvements within 500' of oil and gas location.
 - This map does not represent a boundary survey.



SHEET 1 OF 1
 Brian S. Rottinghaus—On behalf of Lat40°, Inc.
 Colorado Licensed Professional Land Surveyor No. 38571
 DATE: 2/15/2023
 PROJECT#: 2019090