

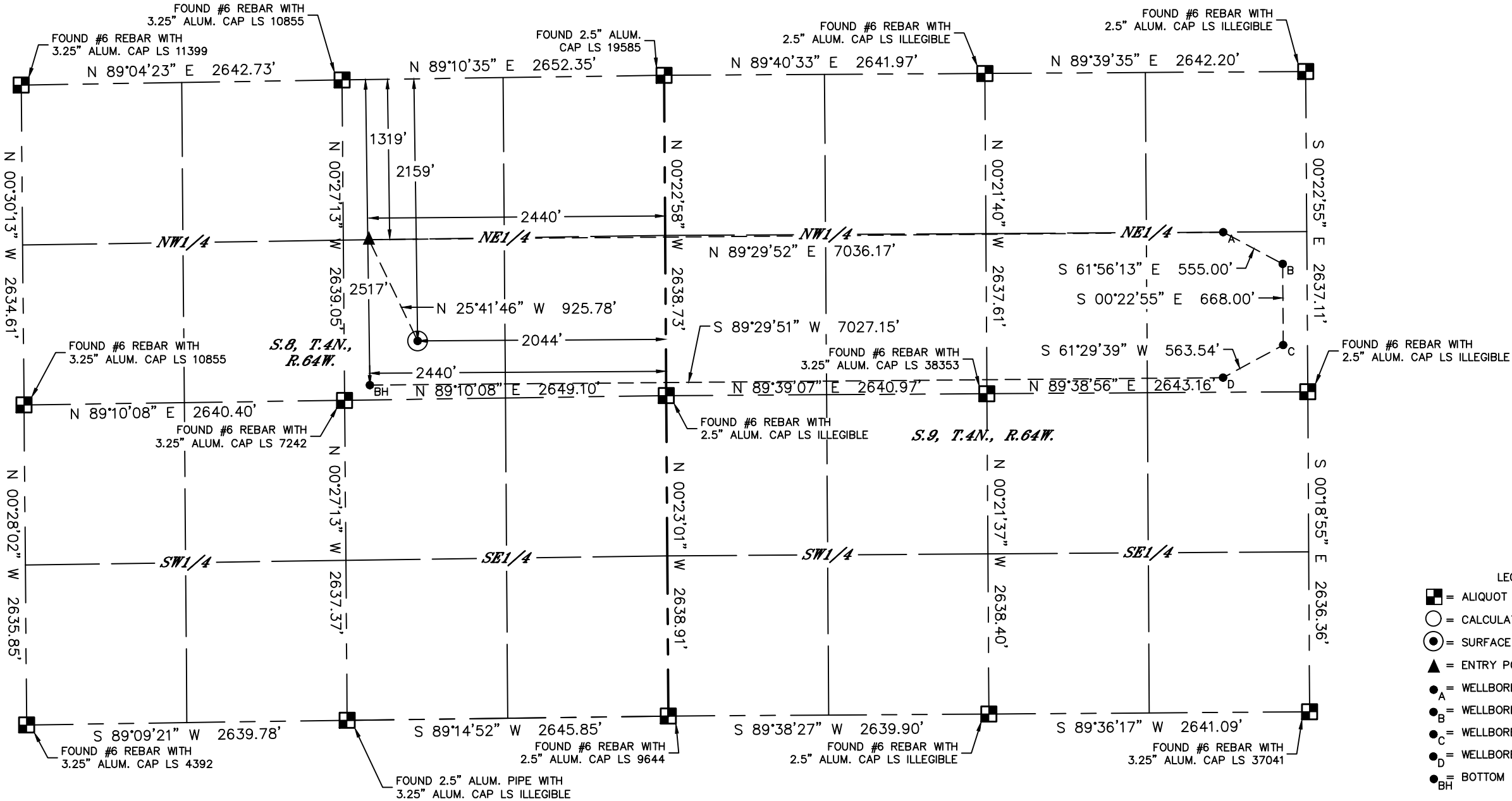


Lat40°, Inc. 6250 W. 10th Street, Unit 2, Greeley, CO 970-515-5294

WELL LOCATION CERTIFICATE

HEN 06NHS
PDC ENERGY

SECTION: 8
TOWNSHIP: 4N
RANGE: 64W
6TH. P.M.
WELD COUNTY, CO



- LEGEND
- = ALIQUOT MONUMENT AS DESCRIBED
 - = CALCULATED POSITION
 - = SURFACE HOLE LOCATION (SHL)
 - ▲ = ENTRY POINT LOCATION (EP)
 - = WELLBORE START TURN
 - = WELLBORE EXIST SPACING UNIT
 - = WELLBORE ENTER SPACING UNIT
 - = WELLBORE END TURN
 - = BOTTOM HOLE LOCATION (BHL)

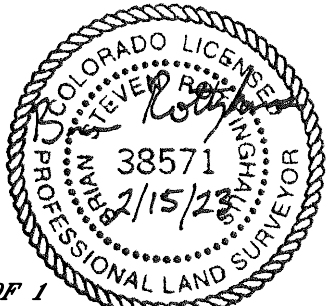
CLIENT: PDC ENERGY, INC.				LANDMAN: DARIN SPITZER			
INSTRUMENT OPERATOR: CASEY KOHOUT				SURVEY DATE: 10/14/2020		SURFACE USE: RANGE LAND	
SHL FOOTAGE	SHL LAT°	SHL LONG°	SHL PDOP	SHL ELEV (FT.)	SHL 1/4/1/4	SHL S-T-R	
2159	FNL	2044	FEL	40.32821	-104.57234	1.5	4780
							SWNE
							8-4-64

BHL FOOTAGE	BHL LAT°	BHL LONG°	BHL S-T-R	EP FOOTAGE	EP LAT°	EP LONG°	EP S-T-R
2517	FNL	2440	FEL	40.32722	-104.57377	8-4-64	1319
							FNL
							200
							FEL
							40.32974
							-104.54678
							9-4-64

POINT A	POINT A LAT°	POINT A LONG°	POINT A S-T-R	POINT B	POINT B LAT°	POINT B LONG°	POINT B S-T-R
1319	FNL	688	FEL	40.33048	-104.54852	9-4-64	1583
							FNL
							200
							FEL
							40.32719
							-104.54857
							9-4-64

POINT C	POINT C LAT°	POINT C LONG°	POINT C S-T-R	POINT D	POINT D LAT°	POINT D LONG°	POINT D S-T-R
2251	FNL	200	FEL	40.32791	-104.54679	9-4-64	2517
							FNL
							697
							FEL
							40.32719
							-104.54857
							9-4-64

- NOTE:
- 1) Bearings shown are Grid Bearings of the Colorado State Plane Coordinate System, North Zone, North American Datum 1983. The lineal dimensions as contained herein are based upon the "U.S. Survey Foot."
 - 2) Distances to section lines measured at 90 degrees from said section lines.
 - 3) Ground elevations are based on an observed GPS elevation (NAVD 1988 DATUM).
 - 4) Latitude and Longitude shown are (NAD 83 DATUM).
 - 5) IMPROVEMENTS: See LOCATION DRAWING for all visible improvements within 500' of oil and gas location.
 - 6) This map does not represent a boundary survey.



SHEET 1 OF 1
Brian S. Rottinghaus—On behalf of Lat40°, Inc.
Colorado Licensed Professional Land Surveyor No. 38571
DATE: 2/15/2023
PROJECT#: 2019090

