

# Interim Reclamation and Stormwater Inspection

February 10, 2023

Operator: UPLAND EXPLORATION LLC- #10701

Location ID: 462919

Inspection Document #: 697504499

Weld County, CO

SESE Section 21 T11N R64W

Chris Binschus  
Reclamation Specialist, COGCC



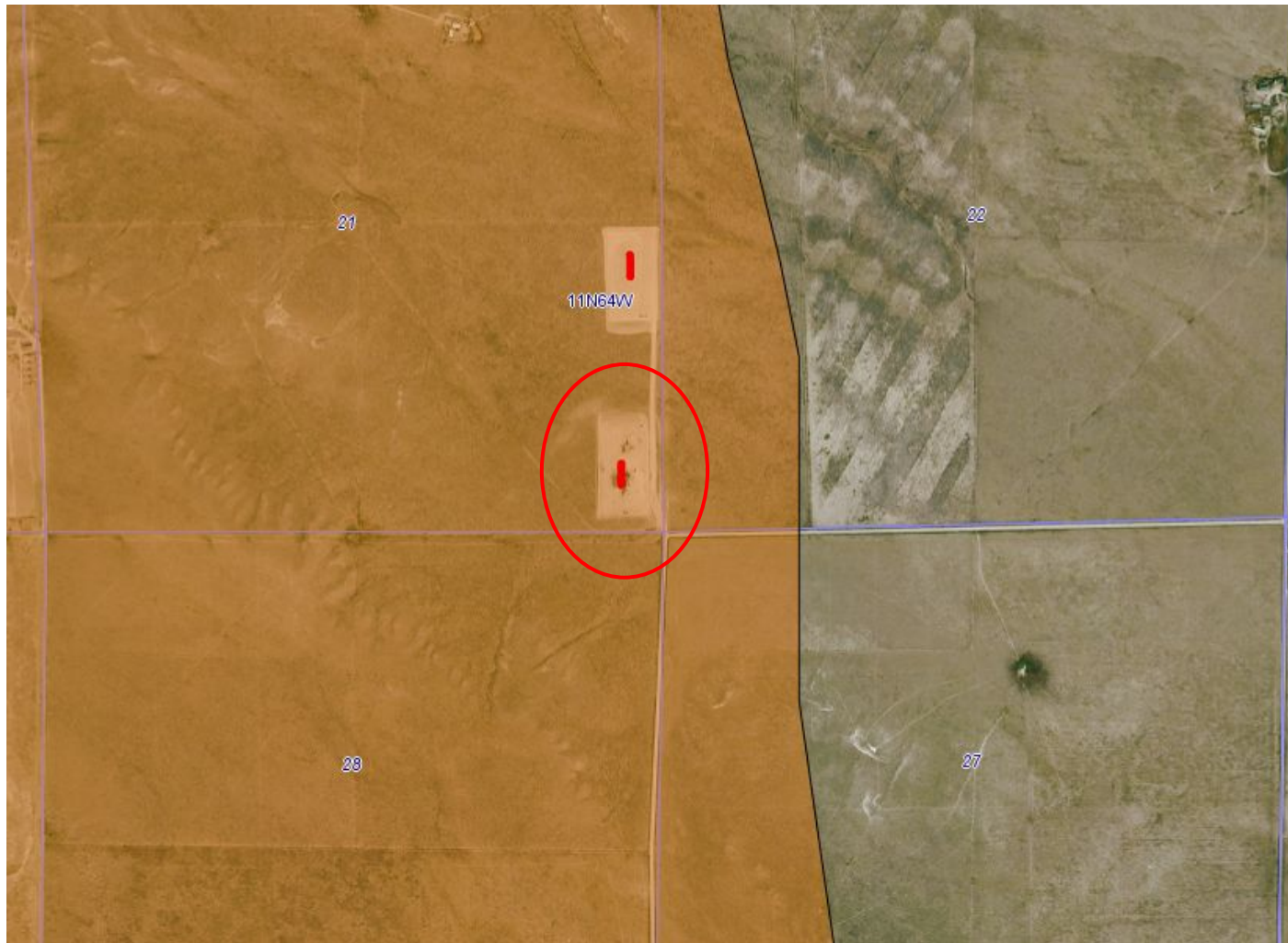
**COLORADO**  
**Oil & Gas Conservation  
Commission**

Department of Natural Resources

# Inspection Photos

Location Name: Little Lady 21/South Well Pad

Location ID: 462919



**Photo 1.** Photo illustrates the access road and location of the Little Lady locations are within a Pronghorn Winter Concentration area.



**COLORADO**  
Oil & Gas Conservation  
Commission

Department of Natural Resources

Inspection Number: 697504499

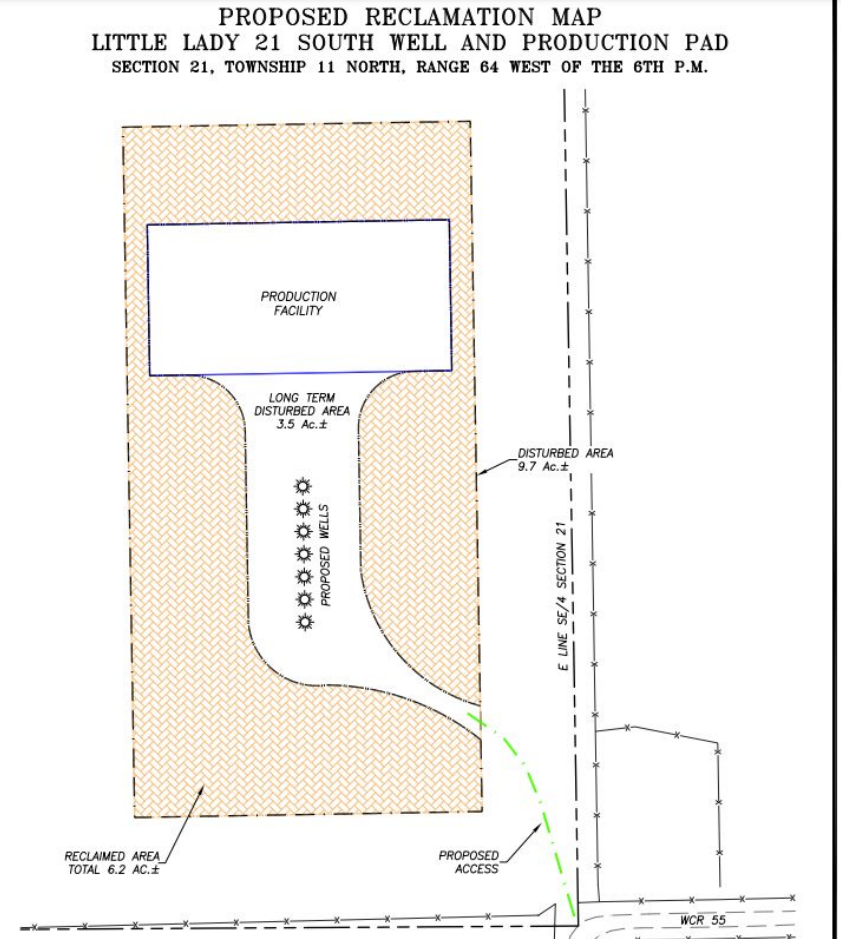
## Inspection Photos

Location Name: Little Lady 21/South Well Pad

Location ID: 462919



**Photo 2.** COGCC GISOnline aerial imagery from 2019 illustrates the location. At the time of this inspection, the location remains the same size and interim reclamation has not been performed- refer to Photos 4-5.



**Photo 3.** The image is from the Operator's Construction Layout Drawing illustrating the proposed interim reclamation plan, which has failed to be performed.



**COLORADO**  
Oil & Gas Conservation  
Commission

Department of Natural Resources

Inspection Number: 697504499



Inspection Photos  
Location Name: Little Lady 21/South Well Pad  
Location ID: 462919



**Photo 4.** Photo taken from the southern location, facing North. Photo illustrates interim reclamation has not been performed.



**Photo 5.** Photo taken from the southern location, facing West. See comments under Photo 4.



**COLORADO**  
Oil & Gas Conservation  
Commission

Department of Natural Resources

Inspection Number: 697504499



Inspection Photos  
Location Name: Little Lady 21/South Well Pad  
Location ID: 462919



**Photo 6.** Photo taken from the southern location, facing South. Photo illustrates trash has blown off location.



**Photo 7.** Photo taken from the western location, facing West. Photo illustrates a potential tarp that was not secured and is not considered trash/debris.





Inspection Photos  
Location Name: Little Lady 21/South Well Pad  
Location ID: 462919



**Photo 8.** Photo taken from the western location, facing Northwest. Photo illustrates unused risers and this is considered unused equipment.



**Photo 9.** Photo taken from the western location, facing Northeast. Photo illustrates electrical power sources related to the risers; this is considered unused equipment.



**COLORADO**  
Oil & Gas Conservation  
Commission

Department of Natural Resources

Inspection Number: 697504499



Inspection Photos  
Location Name: Little Lady 21/South Well Pad  
Location ID: 462919



**Photo 10.** Photo taken from the northern location, facing East. Photo illustrates the topsoil stockpile which is primarily bare or has weedy, annual vegetation with minimal perennial vegetation that would not met the standard.



**Photo 11.** Photo taken from the northeastern location, facing West. Photo illustrates weed debris and weedy vegetation around production equipment.



Inspection Photos  
Location Name: Little Lady 21/South Well Pad  
Location ID: 462919



**Photo 12.** Photo taken from the eastern location, facing North. Photo illustrates a spill of what appears to be non-E&P exempt waste from a Mobil Pegasus SAE 40 container. This will need to be reported to CDPHE and this appears to be a violation of Rule 906.



**Photo 13.** Photo taken from the eastern location, facing East. Photo illustrates stained soil/spill related to the compressor.



**COLORADO**  
Oil & Gas Conservation  
Commission

Department of Natural Resources

Inspection Number: 697504499



Inspection Photos  
Location Name: Little Lady 21/South Well Pad  
Location ID: 462919



**Photo 14.** Photo taken from the eastern location. Photo illustrates poor housekeeping, as diesel fuel has spilled onto the ground. Operator will be required to have secondary containment for materials handling and spill prevention practices.



**Photo 15.** Photo taken from the eastern location. Photo illustrates netting is in disrepair. Remove and properly dispose fluids from within the secondary containment.



**COLORADO**  
Oil & Gas Conservation  
Commission

Department of Natural Resources

Inspection Number: 697504499



Inspection Photos  
Location Name: Little Lady 21/South Well Pad  
Location ID: 462919



**Photo 16.** Photo taken from the eastern location, facing South. Photo illustrates unmanaged, weedy vegetation along the eastern well pad and the BMP area.



**Photo 17.** Photo taken from the eastern location, facing Southwest. Photo illustrates the weedy vegetation within the BMP area, as well as unused equipment.





Inspection Photos  
Location Name: Little Lady 21/South Well Pad  
Location ID: 462919



**Photo 18.** Photo taken from the wellheads. Photo illustrates unused equipment.



**Photo 19.** Photo taken from the southeastern location, facing Northeast. Photo illustrates unused equipment within the BMP area.



**COLORADO**  
Oil & Gas Conservation  
Commission

Department of Natural Resources

Inspection Number: 697504499