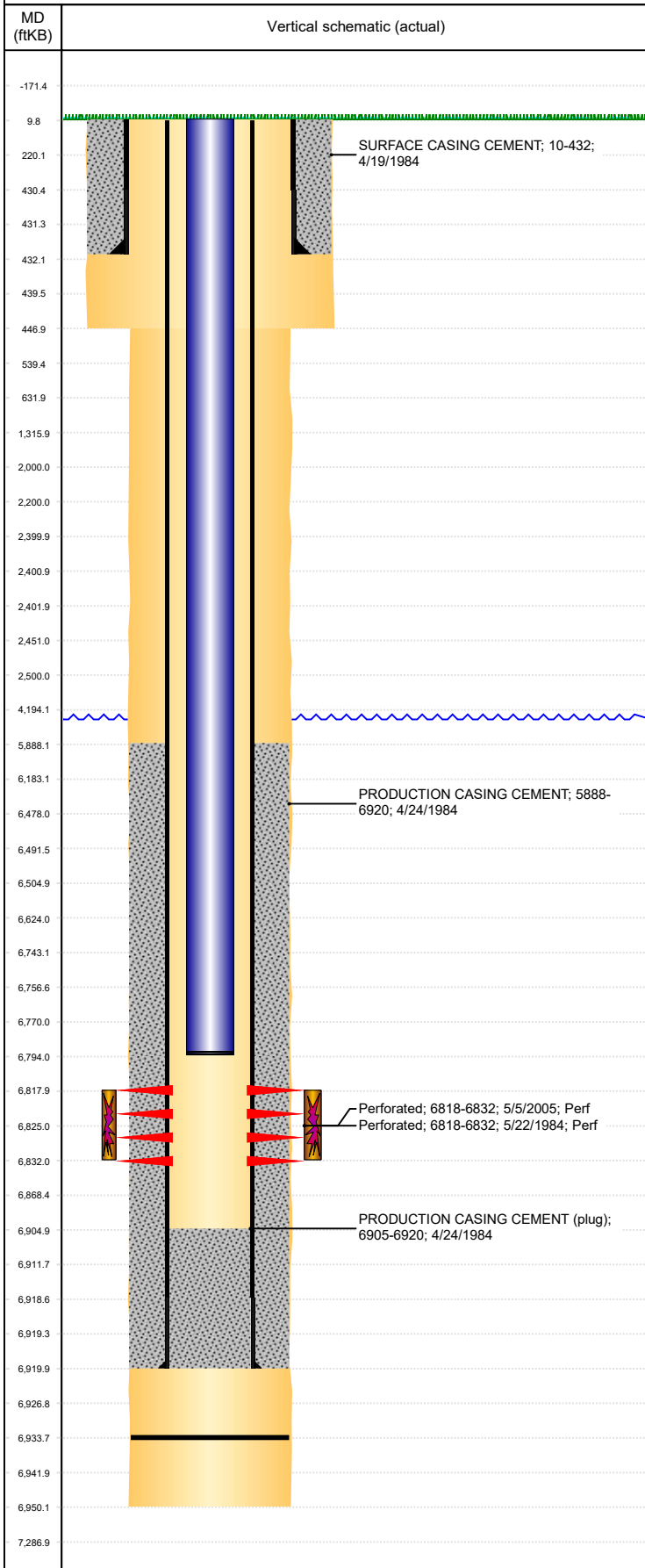




P&A Wellbore For State

Well Name: BORN-SITZMAN 02

Land, Original Hole, 2/16/2023 12:18:13 PM



Well Header

Surface UWI 0512311781	Business Unit Rockies	Gov Auth Dist	Prod Tree Loc Land
Orig. KB to Gnd (ft) 10.00	Original Spud Date 4/18/1984	Abandon Date	Well Sub-Status PR
High... N			

Comment

Well file minimal & sketchy, most info from State Cmpltn Rpt.

Surface Location (Congressional)

Qtr 3 NE	Qtr 4 SE	Section 27	Twonshp 4	Twonsh... N	Range 64	Rng E/... W	Latitude (°) 40.28181203	Longitude (°) -104.529766931
-------------	-------------	---------------	--------------	----------------	-------------	----------------	-----------------------------	---------------------------------

Wellbore Sections

Section Des	Hole Size (in)	Act Top (ftKB)	Act Btm (ftKB)
SURFACE	12 1/4	10.0	447.0
PRODUCTION	7 7/8	447.0	6,950.0

Casing Strings

Csg Des	Run Date	OD (in)	Wt/Len (lb/ft)	Grade	Top Depth (MD) (ftKB)	Set Depth (MD) (ftKB)
Surface	4/19/1984	8 5/8	24.00		10	432
Production Casing	4/24/1984	4 1/2	10.50		10	6920

Cement

Des	Start Date	Top (ftKB)	Btm (ftKB)
SURFACE CASING CEMENT	4/19/1984	10.0	432.0
PRODUCTION CASING CEMENT	4/24/1984	5,888.0	6,920.0

Zone Statuses

Zone Name	Status Date	Status	Fluid Type	Job	Prod Method
CODELL	9/14/2005	PR	Water	RE-FRAC, 8/4/2005 00:00	Flowing
CODELL	2/23/2010	PR			
NIOBRARA	6/19/1984	PR	Oil		Flowing
NIOBRARA	2/23/2010	PR	Water		Flowing

Perforation Data

Linked Zone	Explosive Type	Entered Shot Total	Top (ftKB)	Btm (ftKB)	Date
CODELL, Original Hole		15	6,818.0	6,832.0	5/22/1984
CODELL, Original Hole		56	6,818.0	6,832.0	5/5/2005

Stimulation Intervals

Zone	Start Date	Top (ftKB)	Btm (ftKB)
CODELL, Original Hole	5/1/1984	6,818.0	6,832.0
CODELL, Original Hole	9/6/2005	6,818.0	6,832.0

Other In Hole

Run Date	Des	Make	OD (in)	Top (ftKB)	Btm (ftKB)

Logs

Date	Type	Depth Top (MD) (ftKB)	Btm (ftKB)
4/23/1984	COMPENSATED DENSITY	4,250	6,944.0
4/23/1984	INDUCTION	430	6,946.0
5/11/1984	CBL/CCL/GR	5,818	6,897.0
12/4/1984	CBL/CCL/GR	5,300	6,893.0
3/29/2011	GYRO	0	6,525.0

Plug Back Total Depths

Date	Type	Com	PBTD (ftKB)
5/11/1984	CEMENT PLUG	DEPTH LOGGER	6,905
5/21/1984	GUIDE SHOE	GUIDE SHOE	6,934