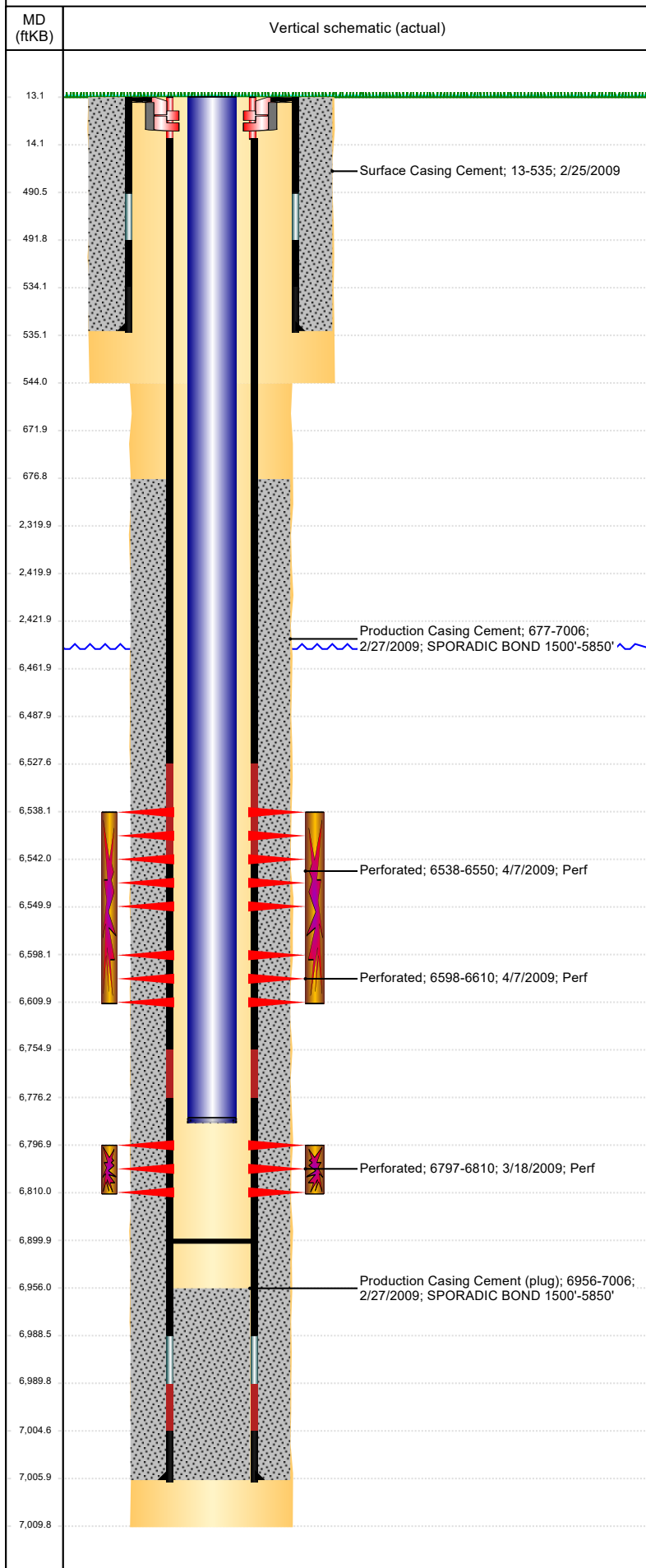




P&A Wellbore For State

Well Name: DINNEL C26-20

Land, Original Hole, 2/2/2023 11:49:25 AM



Well Header

Surface UWI 0512329433	Business Unit Rockies	Gov Auth Dist	Prod Tree Loc Land
Orig. KB to Gnd (ft) 13.00	Original Spud Date 2/24/2009	Abandon Date	Well Sub-Status PR
High Pre N			

Comment
318A.e. LOCATION!

Surface Location (Congressional)

Quarter 3 SW	Quarter 4 NW	Section 26	Township 4	Twnshp N N	Range 64	Rng E/W W	Latitude (°) 40.283936171	Longitude (°) -104.522855221
-----------------	-----------------	---------------	---------------	---------------	-------------	--------------	------------------------------	---------------------------------

Wellbore Sections

Section Des	Hole Size (in)	Act Top (ftKB)	Act Btm (ftKB)
SURFACE	12 1/4	13.0	544.0
PRODUCTION	7 7/8	544.0	7,010.0

Casing Strings

Csg Des	Run Date	OD (in)	Wt/Len (lb/ft)	Grade	Top Depth (MD) (ftKB)	Set Depth (MD) (ftKB)
Surface	2/24/2009	8 5/8	24.00	J-55	13	535
Production Casing	2/27/2009	4 1/2	11.60	M-80	13	7006

Cement

Des	Start Date	Top (ftKB)	Btm (ftKB)
Surface Casing Cement	2/25/2009	13.0	535.0
Production Casing Cement	2/27/2009	677.0	7,006.0

Zone Statuses

Zone Name	Status Date	Status	Fluid Type	Job	Prod Method
CODELL	4/9/2009	PR		DRILLING/COMPLETION - ORIGINAL, 2/23/2009 22:01	
NIOBRARA	4/9/2009	PR		DRILLING/COMPLETION - ORIGINAL, 2/23/2009 22:01	

Perforation Data

Linked Zone	Explosive Type	Entered Shot Total	Top (ftKB)	Btm (ftKB)	Date
NIOBRARA, Original Hole	A	24	6,538.0	6,550.0	4/7/2009
NIOBRARA, Original Hole	B	24	6,598.0	6,610.0	4/7/2009
CODELL, Original Hole		52	6,797.0	6,810.0	3/18/2009

Stimulation Intervals

Zone	Start Date	Top (ftKB)	Btm (ftKB)
NIOBRARA, Original Hole	4/7/2009	6,538.0	6,610.0
CODELL, Original Hole	4/7/2009	6,797.0	6,810.0

Other In Hole

Run Date	Des	Make	OD (in)	Top (ftKB)	Btm (ftKB)

Logs

Date	Type	Depth Top (MD) (ftKB)	Btm (ftKB)
2/27/2009	Caliper/Comp. Density/Neutron/GR/SP/ML	2,690	7,007.0
2/27/2009	DIL/GR/SP/Caliper	535	7,007.0
3/6/2009	CBL/CCL/GR	550	6,949.0

Plug Back Total Depths

Date	Type	Com	PBTD (ftKB)
12/7/2009	FILL		6,680
12/8/2009	PLUG REMNANTS	90' OF RAT HOLE	6,900