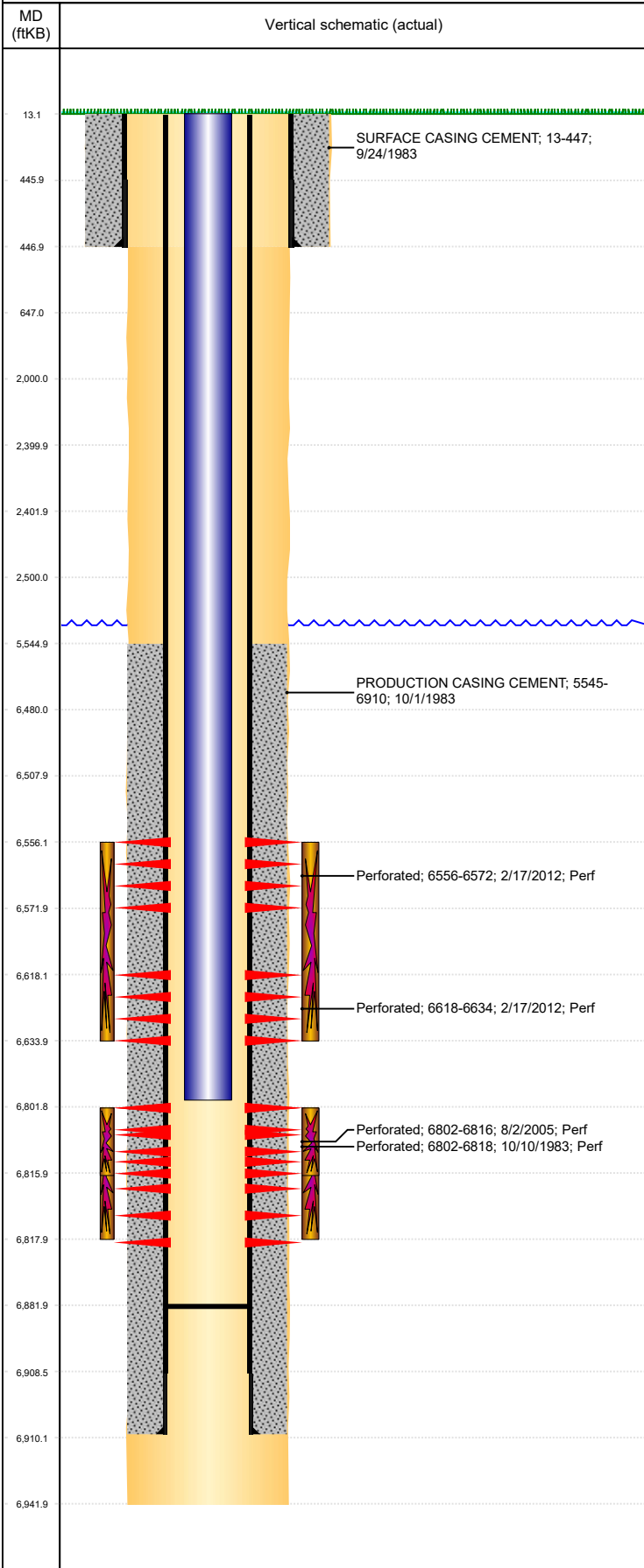




P&A Wellbore For State

Well Name: BORN SITZMAN 01

Land, Original Hole, 2/8/2023 3:56:12 PM



Well Header									
Surface UWI 0512311308		Business Unit Rockies		Gov Auth Dist		Prod Tree Loc Land			
Orig. KB to Gnd (ft) 13.00		Original Spud Date 9/24/1983		Abandon Date		Well Sub-Status SI		High...	
Comment ORIG GL=4675', RESURVEYED 2005 @ 4671'; KB IS 13' - ORIG WELL RECORDS SKETCHY & MINIMAL, MOSTLY FROM ST RECORDS									
Surface Location (Congressional)									
Qtr 3 NE	Qtr 4 NE	Section 27	Twshp 4	Twsh...	Range 64	Rng E/...	Latitude (°) 40.28904976 8	Longitude (°) -104.529655356	
Wellbore Sections									
Section Des		Hole Size (in)		Act Top (ftKB)		Act Btm (ftKB)			
SURFACE		12 1/4		13.0		447.0			
PRODUCTION		7 7/8		447.0		6,942.0			
Casing Strings									
Csg Des		Run Date		OD (in)		Wt/Len (lb/ft)		Grade	
Surface		9/24/1983		8 5/8		24.00		13	
Production Casing		10/1/1983		4 1/2		11.60		13	
Cement									
Des				Start Date		Top (ftKB)		Btm (ftKB)	
SURFACE CASING CEMENT				9/24/1983		13.0		447.0	
PRODUCTION CASING CEMENT				10/1/1983		5,545.0		6,910.0	
Zone Statuses									
Zone Name		Status Date		Status		Fluid Type		Job	
CODELL		8/25/2005		PR				RE-FRAC, 8/1/2005 00:00	
CODELL		2/23/2010		PR				Flowing	
NIOBRARA		2/23/2010		PR				Flowing	
NIOBRARA		2/27/2012		PR				RECOMPLETION, 2/15/2012 11:00	
Perforation Data									
Linked Zone		Explosive Type		Entered Shot Total		Top (ftKB)		Btm (ftKB)	
NIOBRARA, Original Hole		A		32		6,556.0		6,572.0	
NIOBRARA, Original Hole		B		32		6,618.0		6,634.0	
CODELL, Original Hole				56		6,802.0		6,816.0	
CODELL, Original Hole				16		6,802.0		6,818.0	
Stimulation Intervals									
Zone		Start Date		Top (ftKB)		Btm (ftKB)			
NIOBRARA, Original Hole		2/25/2012		6,556.0		6,634.0			
CODELL, Original Hole		11/1/1983		6,802.0		6,818.0			
CODELL, Original Hole		8/24/2005		6,802.0		6,816.0			
Other In Hole									
Run Date		Des		Make		OD (in)		Top (ftKB)	
Logs									
Date		Type				Depth Top (MD) (ftKB)		Btm (ftKB)	
9/30/1983		COMPENSATED DENSITY				4,000		6,940.0	
9/30/1983		INDUCTION				447		6,938.0	
9/30/1983		RESERVOIR ANALYSIS				6,400		6,940.0	
2/23/2011		GYRO				10		6,700.0	
Plug Back Total Depths									
Date		Type		Com				PBTD (ftKB)	
8/29/2005		FILL		C/O SD PLUG TO 6882' - 66' RAT HOLE				6,882	
3/8/2012		FILL		C/O TO 6882'				6,882	