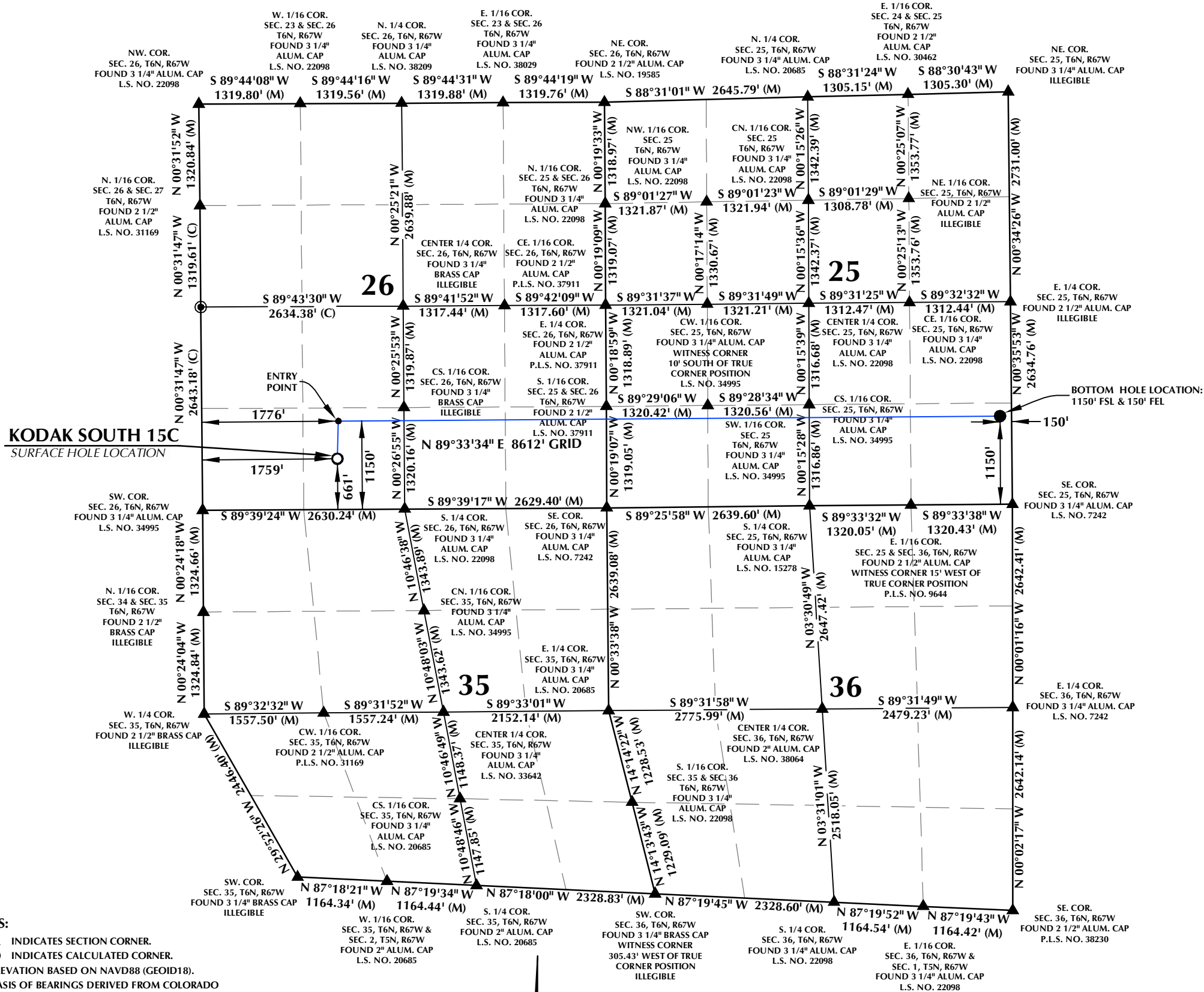


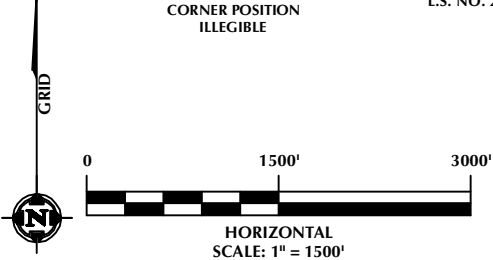
T6N, R67W



SURFACE HOLE LOCATION: NAD 83
GROUND ELEVATION= 4743.0'
LATITUDE= 40.452512°
LONGITUDE= -104.864023°
ENTRY POINT: NAD 83
LATITUDE= 40.453853°
LONGITUDE= -104.863964°
BOTTOM HOLE LOCATION: NAD 83
LATITUDE= 40.453861°
LONGITUDE= -104.833017°

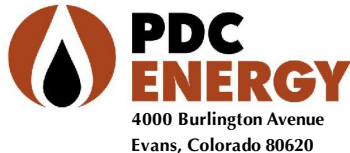
CERTIFICATE OF SURVEYOR:
THIS IS TO CERTIFY THAT THE ABOVE PLAT WAS PREPARED FROM FIELD NOTES OF ACTUAL SURVEYS MADE BY ME OR UNDER MY SUPERVISION AND THAT THE SAME ARE TRUE AND CORRECT TO THE BEST OF MY KNOWLEDGE AND BELIEF. THIS CERTIFICATE DOES NOT REPRESENT A LAND SURVEY PLAT OR IMPROVEMENT SURVEY PLAT AS DEFINED BY C.R.S. 38-51-102 AND CANNOT BE RELIED UPON TO DETERMINE OWNERSHIP.
Randall K. French
RANDALL K. FRENCH
PROFESSIONAL LAND SURVEYOR
COLORADO REGISTRATION NUMBER 38512
2/10/23
NOTICE: ACCORDING TO COLORADO STATE LAW YOU MUST OBTAIN A LEGAL ACTION BASED UPON ANY DEFECT IN THIS SURVEY WITHIN THREE YEARS AFTER YOU FIRST DISCOVER SUCH DEFECT. IN NO EVENT MAY ANY ACTION BASED UPON ANY DEFECT IN THIS SURVEY BE COMMENCED MORE THAN TEN YEARS FROM THE DATE ON THE CERTIFICATION SHOWN HEREON.

- NOTES:**
- ▲ INDICATES SECTION CORNER.
 - INDICATES CALCULATED CORNER.
 - ELEVATION BASED ON NAVD88 (GEOID18).
 - BASIS OF BEARINGS DERIVED FROM COLORADO COORDINATE SYSTEM OF 1983, NORTH ZONE.
 - ALL MEASURED DISTANCES ARE GRID.
COMBINED SCALE FACTOR: .99973886 CALCULATED FROM THE SW. CORNER OF SECTION 26, T6N, R67W.
 - OPERATOR: TOBY OSBORN / PDOP = 1.8
 - WELL FOOTAGES ARE MEASURED AT RIGHT ANGLES TO THE SECTION LINES.
 - THE BOTTOM HOLE LOCATION BEARS N89°33'34"E, 8612' FROM THE ENTRY POINT.



LOVELAND OFFICE
6706 North Franklin Avenue
Loveland, Colorado 80538
Phone 970-776-4331

SHERIDAN OFFICE
1095 Saberton Avenue
Sheridan, Wyoming 82801
Phone 307-674-0609



WELL PAD - KODAK SOUTH FD PAD 28-222HN

KODAK SOUTH 15C
WELL LOCATION CERTIFICATE
661' FSL & 1759' FWL (SESW) (SURFACE HOLE LOCATION)
1150' FSL & 1776' FWL (SESW) (ENTRY POINT)
LOCATED IN SECTION 26
1150' FSL & 150' FEL (SESE) (BOTTOM HOLE LOCATION)
LOCATED IN SECTION 25
T6N, R67W, 6TH P.M.
WELD COUNTY, COLORADO

DRAFTED BY:	SJM	CHECKED BY:	RKF
DATE DRAFTED:	12/5/22	DATE SURVEYED:	11/30/22
REVISED:	2/10/23	FILE NAME:	22-162