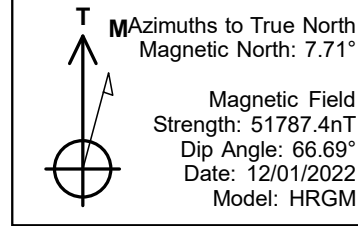


# Confluence Resources



Bigfoot 11-5-4  
 Bigfoot Pad - SEC.11-T4N-R63W  
 North American Datum 1983 , US State Plane 1983, Colorado Northern Zone  
 Ground Elevation: 4616.0  
 +N/-S +E/-W Northing Easting Latitude Longitude Slot  
 0.0 0.0 1363511.75 3303110.39 40.326140 -104.412830  
 Akita KB 16' RKB @ 4632.0ft (Akita KB 16')

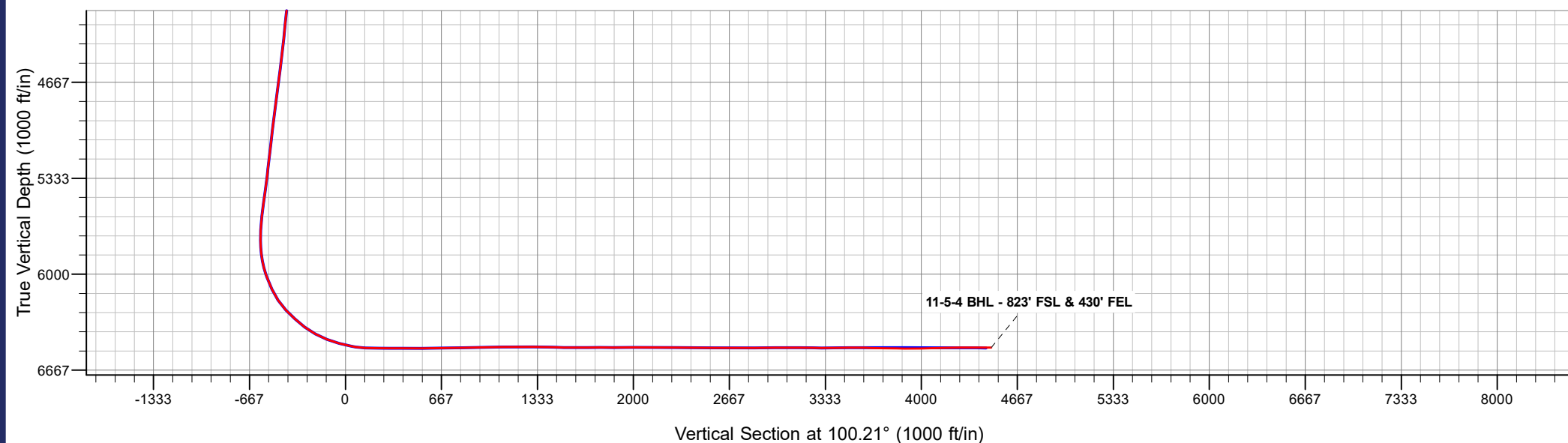
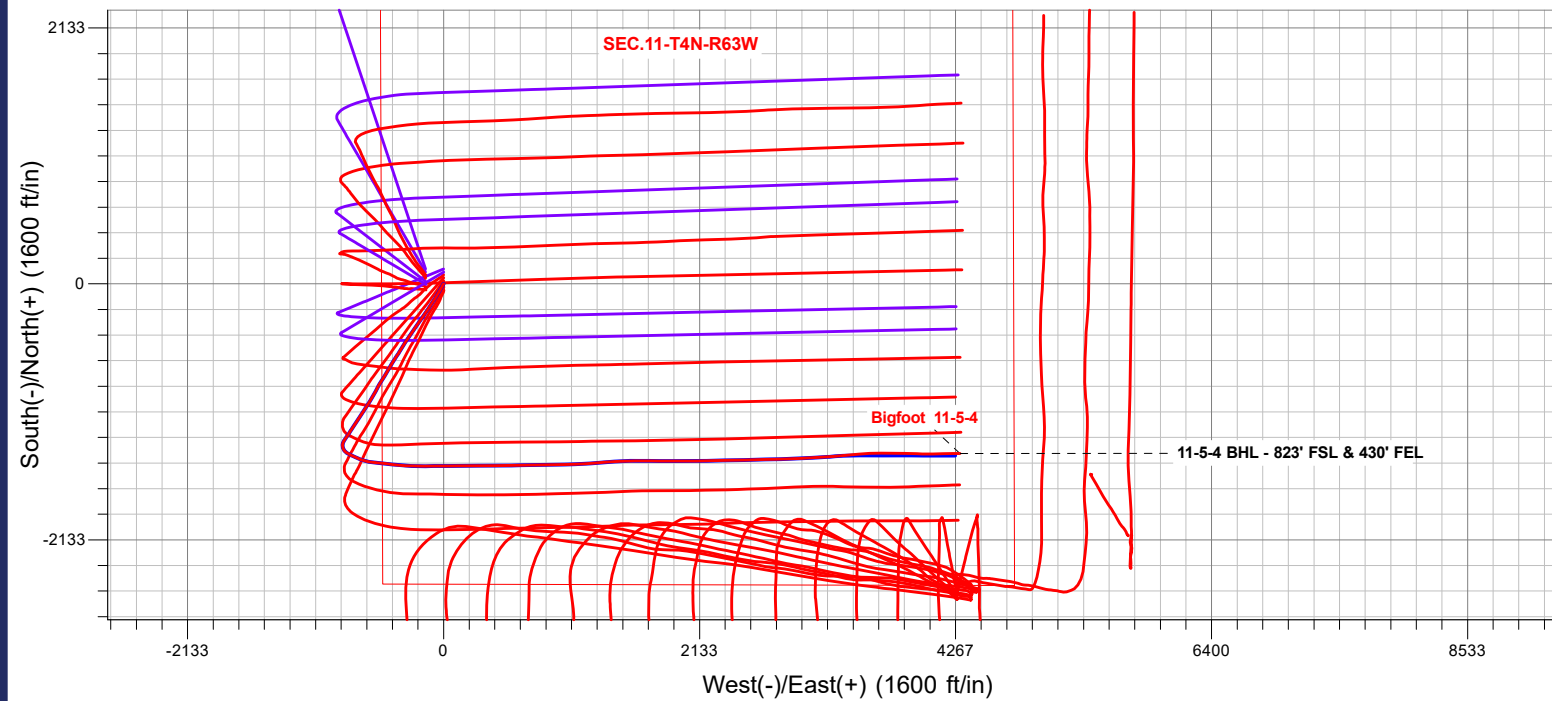
Bigfoot Pad - SEC.11-T4N-R63W  
 Bigfoot 11-5-4  
 Bigfoot 11-5-4 Final Surveys  
 17:12, December 19 2022



ANNOTATIONS

MD	TVD	Annotation
11608.0	6509.1	11-5-4 BHL - 823' FSL & 430' FEL

**FINAL SURVEY**  
**Projected Bottom Hole Location**  
 11608' MD / 6509.1' TVD  
 90.79° INC / 90.20° AZM  
 823' FSL / 430' FEL





## **Confluence Resources**

**SEC. 11-T4N-R63W**

**Bigfoot Pad - SEC.11-T4N-R63W**

**Bigfoot 11-5-4**

**Bigfoot 11-5-4**

**Survey: Survey #4 Complete survey 0 to TD**

## **Standard Survey Report**

**19 December, 2022**

<b>Company:</b>	Confluence Resources	<b>Local Co-ordinate Reference:</b>	Well Bigfoot 11-5-4
<b>Project:</b>	SEC. 11-T4N-R63W	<b>TVD Reference:</b>	RKB @ 4632.0ft (Akita KB 16')
<b>Site:</b>	Bigfoot Pad - SEC.11-T4N-R63W	<b>MD Reference:</b>	RKB @ 4632.0ft (Akita KB 16')
<b>Well:</b>	Bigfoot 11-5-4	<b>North Reference:</b>	True
<b>Wellbore:</b>	Bigfoot 11-5-4	<b>Survey Calculation Method:</b>	Minimum Curvature
<b>Design:</b>	Bigfoot 11-5-4 Final Surveys	<b>Database:</b>	US_EDM

<b>Project</b>	SEC. 11-T4N-R63W		
<b>Map System:</b>	US State Plane 1983	<b>System Datum:</b>	Mean Sea Level
<b>Geo Datum:</b>	North American Datum 1983		
<b>Map Zone:</b>	Colorado Northern Zone		Using geodetic scale factor

<b>Site</b>	Bigfoot Pad - SEC.11-T4N-R63W				
<b>Site Position:</b>		<b>Northing:</b>	1,363,458.94 usft	<b>Latitude:</b>	40.326000
<b>From:</b>	Lat/Long	<b>Easting:</b>	3,302,963.26 usft	<b>Longitude:</b>	-104.413360
<b>Position Uncertainty:</b>	0.0 ft	<b>Slot Radius:</b>	13-3/16 "	<b>Grid Convergence:</b>	0.70 °

<b>Well</b>	Bigfoot 11-5-4					
<b>Well Position</b>	<b>+N/-S</b>	0.0 ft	<b>Northing:</b>	1,363,511.75 usft	<b>Latitude:</b>	40.326140
	<b>+E/-W</b>	0.0 ft	<b>Easting:</b>	3,303,110.39 usft	<b>Longitude:</b>	-104.412830
<b>Position Uncertainty</b>		0.0 ft	<b>Wellhead Elevation:</b>	ft	<b>Ground Level:</b>	4,616.0 ft

<b>Wellbore</b>	Bigfoot 11-5-4				
<b>Magnetics</b>	<b>Model Name</b>	<b>Sample Date</b>	<b>Declination (°)</b>	<b>Dip Angle (°)</b>	<b>Field Strength (nT)</b>
	HRGM	12/01/2022	7.71	66.69	51,787.38002660

<b>Design</b>	Bigfoot 11-5-4 Final Surveys				
<b>Audit Notes:</b>					
<b>Version:</b>	1.0	<b>Phase:</b>	ACTUAL	<b>Tie On Depth:</b>	0.0
<b>Vertical Section:</b>	<b>Depth From (TVD) (ft)</b>	<b>+N/-S (ft)</b>	<b>+E/-W (ft)</b>	<b>Direction (°)</b>	
	0.0	0.0	0.0	100.21	

<b>Survey Program</b>	<b>Date</b>	12/19/2022			
<b>From (ft)</b>	<b>To (ft)</b>	<b>Survey (Wellbore)</b>	<b>Tool Name</b>	<b>Description</b>	
148.0	1,792.0	Survey #1 (Bigfoot 11-5-4)	MWD	MWD - Standard	
10,585.0	11,608.0	Survey #3 Ensign (Bigfoot 11-5-4)	MWD+HDGM	OWSG MWD + HDGM	

<b>Survey</b>										
<b>Measured Depth (ft)</b>	<b>Inclination (°)</b>	<b>Azimuth (°)</b>	<b>Vertical Depth (ft)</b>	<b>+N/-S (ft)</b>	<b>+E/-W (ft)</b>	<b>Vertical Section (ft)</b>	<b>Dogleg Rate (°/100usft)</b>	<b>Build Rate (°/100usft)</b>	<b>Turn Rate (°/100usft)</b>	
0.0	0.00	0.00	0.0	0.0	0.0	0.0	0.00	0.00	0.00	
148.2	0.97	226.05	148.2	-0.9	-0.9	-0.7	0.65	0.65	0.00	
239.2	1.49	224.82	239.2	-2.2	-2.3	-1.9	0.57	0.57	-1.35	
331.2	1.49	227.28	331.1	-3.9	-4.0	-3.3	0.07	0.00	2.67	
450.2	2.46	199.51	450.1	-7.4	-6.0	-4.6	1.12	0.82	-23.34	
540.2	3.78	201.62	539.9	-11.9	-7.7	-5.5	1.47	1.47	2.34	
627.2	5.54	204.43	626.6	-18.4	-10.5	-7.1	2.04	2.02	3.23	
715.2	8.27	210.41	714.0	-27.8	-15.5	-10.3	3.20	3.10	6.80	
804.2	10.64	211.28	801.8	-40.3	-23.0	-15.5	2.67	2.66	0.98	
889.2	12.93	210.93	885.0	-55.2	-32.0	-21.7	2.70	2.69	-0.41	

<b>Company:</b>	Confluence Resources	<b>Local Co-ordinate Reference:</b>	Well Bigfoot 11-5-4
<b>Project:</b>	SEC. 11-T4N-R63W	<b>TVD Reference:</b>	RKB @ 4632.0ft (Akita KB 16')
<b>Site:</b>	Bigfoot Pad - SEC.11-T4N-R63W	<b>MD Reference:</b>	RKB @ 4632.0ft (Akita KB 16')
<b>Well:</b>	Bigfoot 11-5-4	<b>North Reference:</b>	True
<b>Wellbore:</b>	Bigfoot 11-5-4	<b>Survey Calculation Method:</b>	Minimum Curvature
<b>Design:</b>	Bigfoot 11-5-4 Final Surveys	<b>Database:</b>	US_EDM

Survey									
Measured Depth (ft)	Inclination (°)	Azimuth (°)	Vertical Depth (ft)	+N/-S (ft)	+E/-W (ft)	Vertical Section (ft)	Dogleg Rate (°/100usft)	Build Rate (°/100usft)	Turn Rate (°/100usft)
979.2	15.92	210.76	972.1	-74.4	-43.5	-29.6	3.32	3.32	-0.19
1,068.2	18.29	210.93	1,057.2	-96.9	-56.9	-38.8	2.66	2.66	0.19
1,157.2	18.91	212.69	1,141.5	-121.0	-71.8	-49.3	0.94	0.70	1.98
1,247.2	18.73	212.16	1,226.7	-145.5	-87.4	-60.3	0.28	-0.20	-0.59
1,337.2	17.67	213.39	1,312.2	-169.1	-102.6	-71.0	1.25	-1.18	1.37
1,427.2	17.94	213.57	1,397.9	-192.1	-117.8	-81.9	0.31	0.30	0.20
1,516.2	16.97	213.04	1,482.8	-214.4	-132.5	-92.4	1.10	-1.09	-0.60
1,603.2	15.92	213.04	1,566.3	-235.1	-145.9	-101.9	1.21	-1.21	0.00
1,693.2	16.97	214.27	1,652.6	-256.3	-160.0	-112.1	1.23	1.17	1.37
1,732.2	16.62	214.98	1,689.9	-265.5	-166.4	-116.7	1.04	-0.90	1.82
1,865.0	16.31	216.77	1,817.3	-296.0	-188.5	-133.0	0.45	-0.23	1.35
1,953.0	15.56	217.48	1,901.9	-315.3	-203.1	-144.0	0.88	-0.85	0.81
2,042.0	16.38	214.79	1,987.5	-335.1	-217.5	-154.7	1.24	0.92	-3.02
2,130.0	17.25	214.38	2,071.7	-356.0	-231.9	-165.2	1.00	0.99	-0.47
2,218.0	17.28	215.82	2,155.7	-377.4	-246.9	-176.2	0.49	0.03	1.64
2,307.0	17.28	214.99	2,240.7	-398.9	-262.3	-187.4	0.28	0.00	-0.93
2,393.0	17.80	211.66	2,322.7	-420.6	-276.5	-197.6	1.31	0.60	-3.87
2,482.0	17.40	210.15	2,407.5	-443.7	-290.3	-207.1	0.68	-0.45	-1.70
2,571.0	17.12	210.00	2,492.5	-466.5	-303.5	-216.1	0.32	-0.31	-0.17
2,659.0	17.66	214.75	2,576.5	-488.7	-317.6	-226.0	1.73	0.61	5.40
2,746.0	18.04	216.27	2,659.3	-510.4	-333.1	-237.4	0.69	0.44	1.75
2,834.0	17.63	212.08	2,743.1	-532.7	-348.3	-248.4	1.53	-0.47	-4.76
2,923.0	17.44	209.43	2,828.0	-555.7	-362.0	-257.8	0.92	-0.21	-2.98
3,011.0	17.99	213.42	2,911.8	-578.6	-375.9	-267.5	1.51	0.63	4.53
3,099.0	17.34	213.08	2,995.7	-600.9	-390.6	-277.9	0.75	-0.74	-0.39
3,186.0	17.77	214.53	3,078.6	-622.7	-405.2	-288.4	0.70	0.49	1.67
3,275.0	17.94	210.14	3,163.3	-645.7	-419.8	-298.7	1.52	0.19	-4.93
3,364.0	16.81	213.55	3,248.3	-668.3	-433.8	-308.5	1.71	-1.27	3.83
3,453.0	16.92	209.87	3,333.4	-690.3	-447.3	-317.9	1.21	0.12	-4.13
3,541.0	17.50	207.15	3,417.5	-713.2	-459.7	-326.1	1.13	0.66	-3.09
3,630.0	17.67	208.19	3,502.3	-737.0	-472.2	-334.2	0.40	0.19	1.17
3,718.0	17.96	213.52	3,586.1	-760.1	-486.0	-343.7	1.88	0.33	6.06
3,805.0	17.93	214.55	3,668.9	-782.3	-501.0	-354.5	0.37	-0.03	1.18
3,892.0	17.63	214.55	3,751.7	-804.2	-516.1	-365.4	0.34	-0.34	0.00
3,981.0	17.59	206.96	3,836.6	-827.2	-529.8	-374.9	2.58	-0.04	-8.53
4,069.0	17.68	210.80	3,920.4	-850.6	-542.7	-383.4	1.33	0.10	4.36
4,157.0	18.08	208.78	4,004.2	-874.0	-556.1	-392.5	0.84	0.45	-2.30
4,246.0	17.56	207.46	4,088.9	-898.0	-569.0	-400.8	0.74	-0.58	-1.48
4,335.0	17.23	209.48	4,173.9	-921.4	-581.6	-409.2	0.77	-0.37	2.27
4,424.0	17.77	209.62	4,258.7	-944.7	-594.8	-418.0	0.61	0.61	0.16
4,512.0	16.98	209.75	4,342.7	-967.5	-607.9	-426.8	0.90	-0.90	0.15
4,599.0	17.59	211.54	4,425.8	-989.8	-621.0	-435.8	0.93	0.70	2.06
4,688.0	18.02	212.36	4,510.5	-1,012.9	-635.4	-445.9	0.56	0.48	0.92

<b>Company:</b>	Confluence Resources	<b>Local Co-ordinate Reference:</b>	Well Bigfoot 11-5-4
<b>Project:</b>	SEC. 11-T4N-R63W	<b>TVD Reference:</b>	RKB @ 4632.0ft (Akita KB 16')
<b>Site:</b>	Bigfoot Pad - SEC.11-T4N-R63W	<b>MD Reference:</b>	RKB @ 4632.0ft (Akita KB 16')
<b>Well:</b>	Bigfoot 11-5-4	<b>North Reference:</b>	True
<b>Wellbore:</b>	Bigfoot 11-5-4	<b>Survey Calculation Method:</b>	Minimum Curvature
<b>Design:</b>	Bigfoot 11-5-4 Final Surveys	<b>Database:</b>	US_EDM

Survey									
Measured Depth (ft)	Inclination (°)	Azimuth (°)	Vertical Depth (ft)	+N/-S (ft)	+E/-W (ft)	Vertical Section (ft)	Dogleg Rate (°/100usft)	Build Rate (°/100usft)	Turn Rate (°/100usft)
4,775.0	17.26	214.16	4,593.4	-1,034.9	-649.9	-456.2	1.08	-0.87	2.07
4,863.0	17.63	213.74	4,677.4	-1,056.8	-664.6	-466.9	0.44	0.42	-0.48
4,951.0	17.70	215.77	4,761.2	-1,078.7	-679.8	-478.0	0.70	0.08	2.31
5,039.0	17.84	212.86	4,845.0	-1,100.9	-695.0	-488.9	1.02	0.16	-3.31
5,127.0	17.07	210.62	4,929.0	-1,123.3	-708.9	-498.6	1.16	-0.88	-2.55
5,215.0	17.18	213.90	5,013.1	-1,145.3	-722.7	-508.3	1.10	0.13	3.73
5,304.0	17.06	212.75	5,098.1	-1,167.1	-737.1	-518.6	0.40	-0.13	-1.29
5,392.0	16.88	212.78	5,182.3	-1,188.7	-751.0	-528.5	0.20	-0.20	0.03
5,480.0	16.88	214.46	5,266.5	-1,210.0	-765.1	-538.6	0.55	0.00	1.91
5,569.0	16.72	211.99	5,351.7	-1,231.5	-779.2	-548.7	0.82	-0.18	-2.78
5,657.0	17.25	215.72	5,435.9	-1,252.9	-793.6	-559.0	1.38	0.60	4.24
5,744.0	17.36	214.65	5,519.0	-1,274.0	-808.5	-569.9	0.39	0.13	-1.23
5,833.0	17.72	213.89	5,603.8	-1,296.2	-823.6	-580.9	0.48	0.40	-0.85
5,921.0	17.79	202.84	5,687.6	-1,319.7	-836.3	-589.2	3.82	0.08	-12.56
6,007.0	15.19	182.79	5,770.2	-1,343.1	-841.9	-590.6	7.23	-3.02	-23.31
6,095.0	15.92	162.75	5,855.0	-1,366.1	-838.9	-583.6	6.13	0.83	-22.77
6,184.0	17.90	144.99	5,940.2	-1,389.0	-827.4	-568.2	6.19	2.22	-19.96
6,272.0	20.70	121.19	6,023.4	-1,408.2	-806.3	-544.1	9.41	3.18	-27.05
6,361.0	25.25	114.01	6,105.3	-1,424.1	-775.5	-510.9	6.00	5.11	-8.07
6,450.0	35.58	117.40	6,182.0	-1,443.7	-735.1	-467.6	11.76	11.61	3.81
6,538.0	43.66	110.13	6,249.7	-1,466.0	-683.7	-413.1	10.57	9.18	-8.26
6,625.0	48.10	99.52	6,310.4	-1,481.8	-623.4	-351.0	10.12	5.10	-12.20
6,714.0	52.83	95.01	6,367.0	-1,490.3	-555.4	-282.6	6.59	5.31	-5.07
6,803.0	60.77	95.94	6,415.7	-1,497.5	-481.3	-208.4	8.96	8.92	1.04
6,891.0	69.68	97.62	6,452.6	-1,506.9	-402.1	-128.7	10.27	10.13	1.91
6,980.0	73.52	93.95	6,480.7	-1,515.4	-318.1	-44.6	5.82	4.31	-4.12
7,069.0	80.51	90.21	6,500.7	-1,518.5	-231.5	41.2	8.86	7.85	-4.20
7,158.0	85.54	89.65	6,511.5	-1,518.4	-143.2	128.1	5.69	5.65	-0.63
7,218.0	90.24	89.30	6,513.7	-1,517.8	-83.2	187.0	7.85	7.83	-0.58
7,247.0	89.99	89.53	6,513.6	-1,517.6	-54.2	215.5	1.17	-0.86	0.79
7,336.0	89.09	89.54	6,514.3	-1,516.8	34.8	303.0	1.01	-1.01	0.01
7,424.0	90.27	89.67	6,514.8	-1,516.2	122.8	389.5	1.35	1.34	0.15
7,513.0	90.08	89.59	6,514.6	-1,515.7	211.8	476.9	0.23	-0.21	-0.09
7,601.0	90.08	89.51	6,514.4	-1,515.0	299.7	563.4	0.09	0.00	-0.09
7,690.0	89.88	89.57	6,514.5	-1,514.2	388.7	650.9	0.23	-0.22	0.07
7,778.0	91.69	89.33	6,513.3	-1,513.4	476.7	737.3	2.07	2.06	-0.27
7,865.0	91.74	89.34	6,510.6	-1,512.4	563.7	822.7	0.06	0.06	0.01
7,954.0	92.10	89.15	6,507.7	-1,511.2	652.6	910.1	0.46	0.40	-0.21
8,043.0	89.97	89.18	6,506.1	-1,509.9	741.6	997.4	2.39	-2.39	0.03
8,131.0	90.25	89.12	6,505.9	-1,508.6	829.6	1,083.8	0.33	0.32	-0.07
8,220.0	89.97	88.97	6,505.7	-1,507.1	918.6	1,171.1	0.36	-0.31	-0.17
8,309.0	90.32	88.85	6,505.5	-1,505.4	1,007.6	1,258.3	0.42	0.39	-0.13
8,397.0	88.86	87.75	6,506.1	-1,502.8	1,095.5	1,344.4	2.08	-1.66	-1.25

<b>Company:</b>	Confluence Resources	<b>Local Co-ordinate Reference:</b>	Well Bigfoot 11-5-4
<b>Project:</b>	SEC. 11-T4N-R63W	<b>TVD Reference:</b>	RKB @ 4632.0ft (Akita KB 16')
<b>Site:</b>	Bigfoot Pad - SEC.11-T4N-R63W	<b>MD Reference:</b>	RKB @ 4632.0ft (Akita KB 16')
<b>Well:</b>	Bigfoot 11-5-4	<b>North Reference:</b>	True
<b>Wellbore:</b>	Bigfoot 11-5-4	<b>Survey Calculation Method:</b>	Minimum Curvature
<b>Design:</b>	Bigfoot 11-5-4 Final Surveys	<b>Database:</b>	US_EDM

Survey										
Measured Depth (ft)	Inclination (°)	Azimuth (°)	Vertical Depth (ft)	+N/-S (ft)	+E/-W (ft)	Vertical Section (ft)	Dogleg Rate (°/100usft)	Build Rate (°/100usft)	Turn Rate (°/100usft)	
8,485.0	88.81	86.35	6,507.9	-1,498.3	1,183.4	1,430.1	1.59	-0.06	-1.59	
8,574.0	89.54	85.36	6,509.2	-1,491.9	1,272.1	1,516.3	1.38	0.82	-1.11	
8,658.0	89.74	85.04	6,509.7	-1,484.8	1,355.8	1,597.5	0.45	0.24	-0.38	
8,747.0	90.87	88.13	6,509.2	-1,479.5	1,444.7	1,684.0	3.70	1.27	3.47	
8,835.0	89.85	88.27	6,508.7	-1,476.8	1,532.6	1,770.0	1.17	-1.16	0.16	
8,923.0	89.56	89.45	6,509.1	-1,475.0	1,620.6	1,856.3	1.38	-0.33	1.34	
9,012.0	90.15	90.37	6,509.4	-1,474.9	1,709.6	1,943.9	1.23	0.66	1.03	
9,099.0	90.37	90.17	6,509.0	-1,475.3	1,796.6	2,029.6	0.34	0.25	-0.23	
9,187.0	90.14	90.10	6,508.6	-1,475.5	1,884.6	2,116.2	0.27	-0.26	-0.08	
9,276.0	89.74	89.86	6,508.7	-1,475.5	1,973.6	2,203.8	0.52	-0.45	-0.27	
9,364.0	89.42	89.88	6,509.3	-1,475.3	2,061.6	2,290.4	0.36	-0.36	0.02	
9,453.0	89.69	88.81	6,510.0	-1,474.3	2,150.6	2,377.8	1.24	0.30	-1.20	
9,541.0	89.50	88.85	6,510.6	-1,472.5	2,238.6	2,464.0	0.22	-0.22	0.05	
9,629.0	89.11	88.85	6,511.7	-1,470.7	2,326.5	2,550.3	0.44	-0.44	0.00	
9,717.0	90.05	89.23	6,512.4	-1,469.2	2,414.5	2,636.6	1.15	1.07	0.43	
9,805.0	90.23	88.57	6,512.1	-1,467.5	2,502.5	2,722.9	0.78	0.20	-0.75	
9,894.0	90.16	88.59	6,511.8	-1,465.3	2,591.5	2,810.1	0.08	-0.08	0.02	
9,983.0	90.47	88.81	6,511.3	-1,463.3	2,680.5	2,897.3	0.43	0.35	0.25	
10,071.0	90.36	88.58	6,510.7	-1,461.3	2,768.4	2,983.5	0.29	-0.13	-0.26	
10,160.0	89.98	88.43	6,510.4	-1,459.0	2,857.4	3,070.7	0.46	-0.43	-0.17	
10,248.0	89.42	87.39	6,510.9	-1,455.8	2,945.3	3,156.7	1.34	-0.64	-1.18	
10,337.0	89.45	86.85	6,511.8	-1,451.3	3,034.2	3,243.3	0.61	0.03	-0.61	
10,425.0	89.95	86.71	6,512.2	-1,446.4	3,122.1	3,328.9	0.59	0.57	-0.16	
10,502.0	90.52	86.02	6,511.9	-1,441.5	3,198.9	3,403.7	1.16	0.74	-0.90	
10,585.0	91.11	84.28	6,510.7	-1,434.5	3,281.6	3,483.8	2.21	0.71	-2.10	
10,675.0	89.17	84.72	6,510.5	-1,425.8	3,371.2	3,570.5	2.21	-2.16	0.49	
10,763.0	88.82	85.35	6,512.1	-1,418.2	3,458.8	3,655.4	0.82	-0.40	0.72	
10,852.0	88.43	87.61	6,514.2	-1,412.8	3,547.6	3,741.8	2.58	-0.44	2.54	
10,941.0	89.31	88.93	6,516.0	-1,410.1	3,636.6	3,828.9	1.78	0.99	1.48	
11,030.0	89.61	91.19	6,516.8	-1,410.2	3,725.6	3,916.5	2.56	0.34	2.54	
11,118.0	90.67	90.83	6,516.6	-1,411.7	3,813.6	4,003.4	1.27	1.20	-0.41	
11,206.0	92.53	92.29	6,514.1	-1,414.1	3,901.5	4,090.3	2.69	2.11	1.66	
11,293.0	91.62	90.64	6,511.0	-1,416.3	3,988.4	4,176.2	2.16	-1.05	-1.90	
11,381.0	90.34	89.15	6,509.5	-1,416.2	4,076.4	4,262.8	2.23	-1.45	-1.69	
11,469.0	89.11	88.79	6,509.9	-1,414.6	4,164.4	4,349.1	1.46	-1.40	-0.41	
11,548.0	90.79	90.20	6,510.0	-1,413.9	4,243.4	4,426.7	2.78	2.13	1.78	
11,608.0	90.79	90.20	6,509.1	-1,414.1	4,303.4	4,485.8	0.00	0.00	0.00	
<b>11-5-4 BHL - 823' FSL &amp; 430' FEL</b>										

<b>Company:</b>	Confluence Resources	<b>Local Co-ordinate Reference:</b>	Well Bigfoot 11-5-4
<b>Project:</b>	SEC. 11-T4N-R63W	<b>TVD Reference:</b>	RKB @ 4632.0ft (Akita KB 16')
<b>Site:</b>	Bigfoot Pad - SEC.11-T4N-R63W	<b>MD Reference:</b>	RKB @ 4632.0ft (Akita KB 16')
<b>Well:</b>	Bigfoot 11-5-4	<b>North Reference:</b>	True
<b>Wellbore:</b>	Bigfoot 11-5-4	<b>Survey Calculation Method:</b>	Minimum Curvature
<b>Design:</b>	Bigfoot 11-5-4 Final Surveys	<b>Database:</b>	US_EDM

Survey Annotations				
Measured Depth (ft)	Vertical Depth (ft)	Local Coordinates		Comment
		+N/-S (ft)	+E/-W (ft)	
11,608.0	6,509.1	-1,414.1	4,303.4	11-5-4 BHL - 823' FSL & 430' FEL

Checked By: \_\_\_\_\_ Approved By: \_\_\_\_\_ Date: \_\_\_\_\_



## **Directional**

### **Confluence Resources**

**SEC. 11-T4N-R63W**

**Bigfoot Pad - SEC.11-T4N-R63W**

**Bigfoot 11-5-4**

**Bigfoot 11-5-4**

**Survey: Survey #4 Complete survey 0 to TD**

## **Anticollision Summary Report**

**19 December, 2022**

<b>Company:</b>	Confluence Resources	<b>Local Co-ordinate Reference:</b>	Well Bigfoot 11-5-4
<b>Project:</b>	SEC. 11-T4N-R63W	<b>TVD Reference:</b>	RKB @ 4632.0ft (Akita KB 16')
<b>Reference Site:</b>	Bigfoot Pad - SEC.11-T4N-R63W	<b>MD Reference:</b>	RKB @ 4632.0ft (Akita KB 16')
<b>Site Error:</b>	0.0 ft	<b>North Reference:</b>	True
<b>Reference Well:</b>	Bigfoot 11-5-4	<b>Survey Calculation Method:</b>	Minimum Curvature
<b>Well Error:</b>	0.0 ft	<b>Output errors are at</b>	2.00 sigma
<b>Reference Wellbore</b>	Bigfoot 11-5-4	<b>Database:</b>	US_EDM
<b>Reference Design:</b>	Survey: Survey #4 Complete survey 0 to TD	<b>Offset TVD Reference:</b>	Offset Datum

<b>Reference</b>	Survey: Survey #4 Complete survey		
<b>Filter type:</b>	NO GLOBAL FILTER: Using user defined selection & filtering criteria		
<b>Interpolation Method:</b>	MD Interval 100.0ft	<b>Error Model:</b>	ISCWSA
<b>Depth Range:</b>	Unlimited	<b>Scan Method:</b>	Closest Approach 3D
<b>Results Limited by:</b>	Maximum ellipse separation of 1,000.0 ft	<b>Error Surface:</b>	Pedal Curve
<b>Warning Levels Evaluated at:</b>	2.00 Sigma	<b>Casing Method:</b>	Not applied

<b>Survey Program</b>	<b>Date</b>	12/19/2022		
<b>From (ft)</b>	<b>To (ft)</b>	<b>Survey (Wellbore)</b>	<b>Tool Name</b>	<b>Description</b>
148.0	1,792.0	Survey #1 (Bigfoot 11-5-4)	MWD	MWD - Standard
10,585.0	11,608.0	Survey #3 Ensign (Bigfoot 11-5-4)	MWD+HDGM	OWSG MWD + HDGM

Summary						
Site Name Offset Well - Wellbore - Design	Reference Measured Depth (ft)	Offset Measured Depth (ft)	Distance Between Centres (ft)	Distance Between Ellipses (ft)	Separation Factor	Warning
Bigfoot Pad - SEC.11-T4N-R63W						
Bigfoot 11-10-3 - Bigfoot 11-10-3 - Bigfoot 11-10-3 Final §	715.0	721.9	50.4			
Bigfoot 11-10-3 - Bigfoot 11-10-3 - Bigfoot 11-10-3 Final §	11,608.0	9,423.6	809.5	688.7	6.700	SF
Bigfoot 11-11-1 - Bigfoot 11-11-1 - Bigfoot 11-11-1	869.2	870.4	23.2	23.2	10,000.000	CC, ES
Bigfoot 11-11-1 - Bigfoot 11-11-1 - Bigfoot 11-11-1	11,608.0	11,369.8	275.3	166.8	2.539	SF
Bigfoot 11-12-2 - Bigfoot 11-12-2 - Bigfoot 11-12-2 Final §	0.0	0.0	25.8			
Bigfoot 11-12-2 - Bigfoot 11-12-2 - Bigfoot 11-12-2 Final §	190.0	186.7	25.2	25.2	10,000.000	CC, ES
Bigfoot 11-13-3 - Bigfoot 11-13-3 - Bigfoot 11-13-3 Final §	0.0	0.0	51.1			
Bigfoot 11-1-4 - Bigfoot 11-1-4 - Bigfoot 11-1-4 Plan #1 8-	261.3	257.8	194.6	194.0	353.479	CC, ES
Bigfoot 11-1-4 - Bigfoot 11-1-4 - Bigfoot 11-1-4 Plan #1 8-	900.0	840.3	280.6	278.7	147.694	SF
Bigfoot 11-2-4 - Bigfoot 11-2-4 - Bigfoot 11-2-4 Plan #1 8-	270.0	266.0	179.1	178.5	314.825	CC, ES
Bigfoot 11-2-4 - Bigfoot 11-2-4 - Bigfoot 11-2-4 Plan #1 8-	900.0	843.2	261.3	259.4	137.763	SF
Bigfoot 11-3-2 - Bigfoot 11-3-2 - Bigfoot 11-3-2 Final Surv	0.0	0.0	167.3			
Bigfoot 11-3-4 - Bigfoot 11-3-4 Wellbore #1 - Bigfoot 11-3	316.9	311.1	144.6	144.0	216.895	CC, ES
Bigfoot 11-3-4 - Bigfoot 11-3-4 Wellbore #1 - Bigfoot 11-3	1,400.0	1,346.6	274.0	270.8	84.251	SF
Bigfoot 11-4-3 - Bigfoot 11-4-3 Wellbore #1 - Bigfoot 11-4	0.0	0.0	157.8			
Bigfoot 11-4-3 - Bigfoot 11-4-3 Wellbore #1 - Bigfoot 11-4	163.7	162.4	157.6			
Bigfoot 11-4-4 - Bigfoot 11-4-4 - Bigfoot 11-4-4 Plan #1 (8	0.0	0.0	98.4			
Bigfoot 11-4-4 - Bigfoot 11-4-4 - Bigfoot 11-4-4 Plan #1 (8	11,600.0	11,456.1	1,039.8	903.8	7.644	SF
Bigfoot 11-5-1 - Bigfoot 11-5-1 Wellbore #1 - Bigfoot 11-5	304.0	298.7	149.6	149.0	233.671	CC, ES
Bigfoot 11-5-1 - Bigfoot 11-5-1 Wellbore #1 - Bigfoot 11-5	2,300.0	2,169.4	625.0	618.6	98.256	SF
Bigfoot 11-5-4 - Bigfoot 11-5-4 - Plan 2- (12-1-22)	11,316.3	11,315.1	14.1	-11.3	0.554	Level 1, CC
Bigfoot 11-5-4 - Bigfoot 11-5-4 - Plan 2- (12-1-22)	11,400.0	11,398.8	15.1	-12.8	0.542	Level 1, SF
Bigfoot 11-5-4 - Bigfoot 11-5-4 - Plan 2- (12-1-22)	11,500.0	11,498.8	17.1	-14.1	0.548	Level 1, ES
Bigfoot 11-6-2 - Bigfoot 11-6-2 Wellbore #1 - Bigfoot 11-6	0.0	0.2	150.6			
Bigfoot 11-6-2 - Bigfoot 11-6-2 Wellbore #1 - Bigfoot 11-6	466.5	463.2	144.6			
Bigfoot 11-7-3 - Bigfoot 11-7-3 Wellbore #1 - Bigfoot 11-7	0.0	0.2	156.3			
Bigfoot 11-7-3 - Bigfoot 11-7-3 Wellbore #1 - Bigfoot 11-7	316.7	313.3	152.6			
Bigfoot 11-8-1 - Bigfoot 11-8-1 - Bigfoot 11-8-1 Plan #1 (8	0.0	0.0	123.9			
Bigfoot 11-8-1 - Bigfoot 11-8-1 - Bigfoot 11-8-1 Plan #1 (8	11,608.0	11,252.9	1,246.8	1,112.5	9.289	SF
Bigfoot 11-9-2 - Bigfoot 11-9-2 - Bigfoot 11-9-2	0.0	0.7	76.5			
Bigfoot 11-9-2 - Bigfoot 11-9-2 - Bigfoot 11-9-2	100.0	101.2	76.6	76.4	479.572	ES
Bigfoot 11-9-2 - Bigfoot 11-9-2 - Bigfoot 11-9-2	11,608.0	11,291.2	819.9	659.4	5.109	SF

CC - Min centre to center distance or convergent point, SF - min separation factor, ES - min ellipse separation

<b>Company:</b>	Confluence Resources	<b>Local Co-ordinate Reference:</b>	Well Bigfoot 11-5-4
<b>Project:</b>	SEC. 11-T4N-R63W	<b>TVD Reference:</b>	RKB @ 4632.0ft (Akita KB 16')
<b>Reference Site:</b>	Bigfoot Pad - SEC.11-T4N-R63W	<b>MD Reference:</b>	RKB @ 4632.0ft (Akita KB 16')
<b>Site Error:</b>	0.0 ft	<b>North Reference:</b>	True
<b>Reference Well:</b>	Bigfoot 11-5-4	<b>Survey Calculation Method:</b>	Minimum Curvature
<b>Well Error:</b>	0.0 ft	<b>Output errors are at</b>	2.00 sigma
<b>Reference Wellbore</b>	Bigfoot 11-5-4	<b>Database:</b>	US_EDM
<b>Reference Design:</b>	Survey: Survey #4 Complete survey 0 to TD	<b>Offset TVD Reference:</b>	Offset Datum

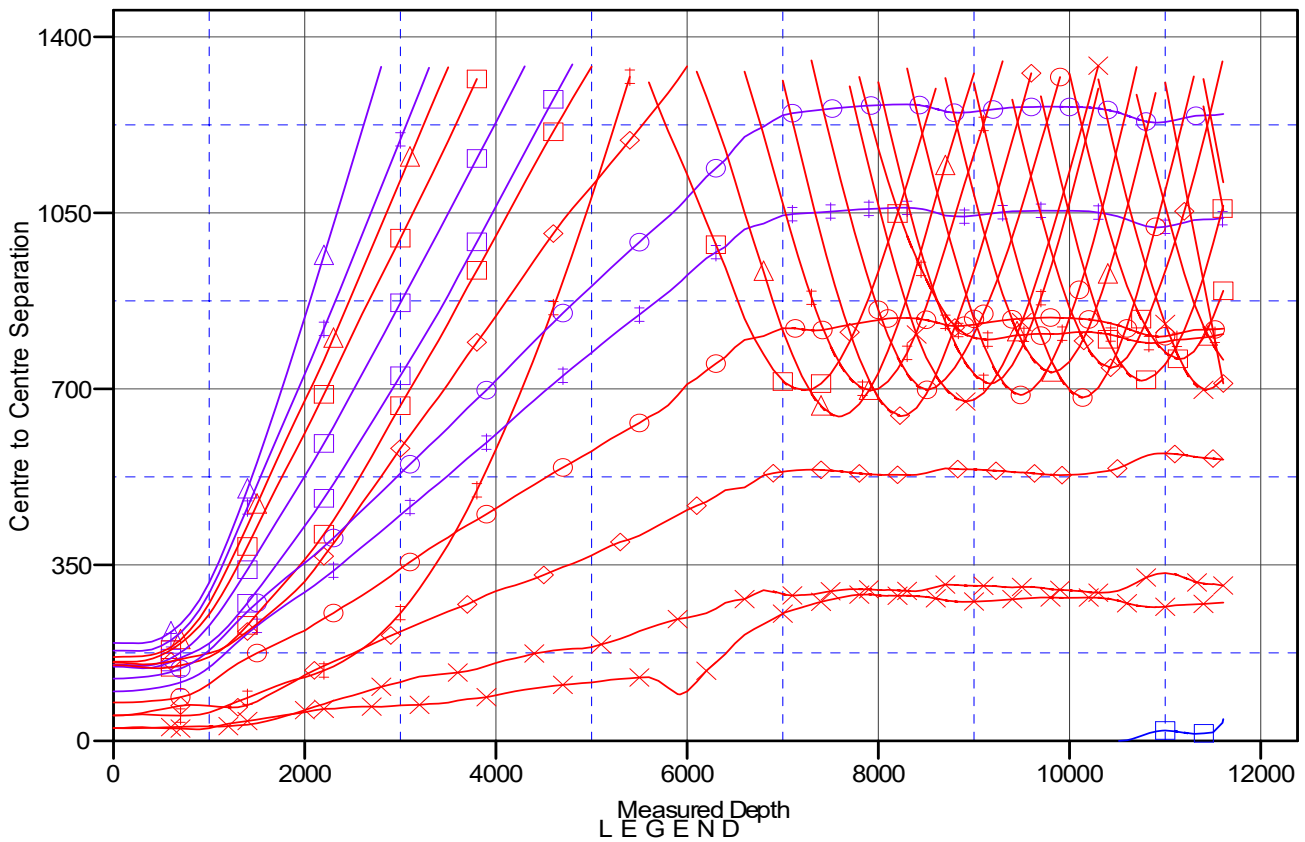
Summary						
Site Name	Reference Measured Depth (ft)	Offset Measured Depth (ft)	Distance Between Centres (ft)	Distance Between Ellipses (ft)	Separation Factor	Warning
<b>Offset Well - Wellbore - Design</b>						
LATHAM 14-12 PAD S12-4N-63W						
LATHAM 14-11-12HZ (Exist.) - Latham 14-11-12HZ - Latl						Out of range
LATHAM 14-12 (Exist.) - Latham 14-12 - Latham 14-12	11,608.0	6,509.8	1,110.9	1,095.1	70.083	CC, ES, SF
Latham 34-2 Pad Sec. 2-T4N-R63W						
Latham 34-31-2HNB - Wellbore #1 - Wellbore #1						Out of range
Latham 44-41-2HNB (Exist.) - Wellbore #1 - Wellbore #1						Out of range
Latham O34-K31-2HC - Wellbore #1 - Wellbore #1						Out of range
Latham O-K-2HNB (Exist.) - Wellbore #1 - Wellbore #1						Out of range
Latham T34-P31-2HC - Wellbore #1 - Wellbore #1						Out of range
Latham T44-P41-2HC - Wellbore #1 - Wellbore #1						Out of range
Latham T-P-2HNB - Wellbore #1 - Wellbore #1						Out of range
SEC. 14-T4N-R63W (Exist)						
Latham 11-14-14HNC - Latham 11-14-14HNC - Latham						Out of range
Latham 11-14-14HNC - Latham 11-14-14HNC - Latham	7,584.6	7,958.1	645.3			
Latham 14-11-12HNC - Latham 14-11-12HNC - Latham						Out of range
Latham 14-11-12HNC - Latham 14-11-12HNC - Latham	11,608.0	7,448.4	1,055.5			
Latham 21-24-14HNC - Latham 21-24-14HNC - Latham						Out of range
Latham 21-24-14HNC - Latham 21-24-14HNC - Latham	8,913.7	7,302.0	675.1			
Latham 31-34-14HNC - Latham 31-34-14HNC - Latham						Out of range
Latham 31-34-14HNC - Latham 31-34-14HNC - Latham	10,137.7	6,452.3	683.0			
Latham 41-44-14HNC - Latham 41-44-14HNC - Latham						Out of range
Latham 41-44-14HNC - Latham 41-44-14HNC - Latham	11,425.9	6,214.8	697.9			
Latham A11-E14-14HNB - Latham A11-E14-14HNB - Lat						Out of range
Latham A11-E14-14HNB - Latham A11-E14-14HNB - Lat	7,227.6	8,152.8	697.6			
Latham E14-A11-12HNB - Latham E14-A11-12HNB - Lat						Out of range
Latham E14-A11-12HNB - Latham E14-A11-12HNB - Lat	11,608.0	7,220.0	710.9			
Latham F11-J14-14HNB - Latham F11-J14-14HNB - Lath						Out of range
Latham F11-J14-14HNB - Latham F11-J14-14HNB - Lath	7,918.5	7,711.9	697.0			
Latham F21-J24-14HNB - Latham F21-J24-14HNB - Latl						Out of range
Latham F21-J24-14HNB - Latham F21-J24-14HNB - Latl	8,508.5	7,446.0	698.4			
Latham F-J-14HNC - Latham F-J-14HNC - Latham F-J-1						Out of range
Latham F-J-14HNC - Latham F-J-14HNC - Latham F-J-1	8,241.8	7,544.3	646.2			
Latham K21-O24-14HNB - Latham K21-O24-14HNB - La						Out of range
Latham K21-O24-14HNB - Latham K21-O24-14HNB - La	9,164.8	6,747.0	710.8			
Latham K31-O34-14HNB - Latham K31-O34-14HNB - La						Out of range
Latham K31-O34-14HNB - Latham K31-O34-14HNB - La	9,813.6	6,455.6	733.0			
Latham K-O-14HNC - Latham K-O-14HNC - Latham K-O						Out of range
Latham K-O-14HNC - Latham K-O-14HNC - Latham K-O	9,489.6	6,641.0	688.2			
Latham P31-T34-14HNB - Latham P31-T34-14HNB - Lat						Out of range
Latham P31-T34-14HNB - Latham P31-T34-14HNB - Lat	10,430.2	6,287.4	742.1			
Latham P41-T44-14HNB - Latham P41-T44-14HNB - Lat						Out of range
Latham P41-T44-14HNB - Latham P41-T44-14HNB - Lat	11,152.8	6,182.8	759.8			
Latham P-T-14HNC - Latham P-T-14HNC - Latham P-T-						Out of range
Latham P-T-14HNC - Latham P-T-14HNC - Latham P-T-	10,753.8	6,285.6	716.7			
Latham U41-Y44-14HNB - Latham U41-Y44-14HNB - La						Out of range
Latham U41-Y44-14HNB - Latham U41-Y44-14HNB - La	11,608.0	6,163.0	758.4			

<b>Company:</b>	Confluence Resources	<b>Local Co-ordinate Reference:</b>	Well Bigfoot 11-5-4
<b>Project:</b>	SEC. 11-T4N-R63W	<b>TVD Reference:</b>	RKB @ 4632.0ft (Akita KB 16')
<b>Reference Site:</b>	Bigfoot Pad - SEC.11-T4N-R63W	<b>MD Reference:</b>	RKB @ 4632.0ft (Akita KB 16')
<b>Site Error:</b>	0.0 ft	<b>North Reference:</b>	True
<b>Reference Well:</b>	Bigfoot 11-5-4	<b>Survey Calculation Method:</b>	Minimum Curvature
<b>Well Error:</b>	0.0 ft	<b>Output errors are at</b>	2.00 sigma
<b>Reference Wellbore</b>	Bigfoot 11-5-4	<b>Database:</b>	US_EDM
<b>Reference Design:</b>	Survey: Survey #4 Complete survey 0 to TD	<b>Offset TVD Reference:</b>	Offset Datum

Reference Depths are relative to RKB @ 4632.0ft (Akita KB 16')  
 Offset Depths are relative to Offset Datum  
 Central Meridian is -105.500000

Coordinates are relative to: Bigfoot 11-5-4  
 Coordinate System is US State Plane 1983, Colorado Northern Zone  
 Grid Convergence at Surface is: 0.70°

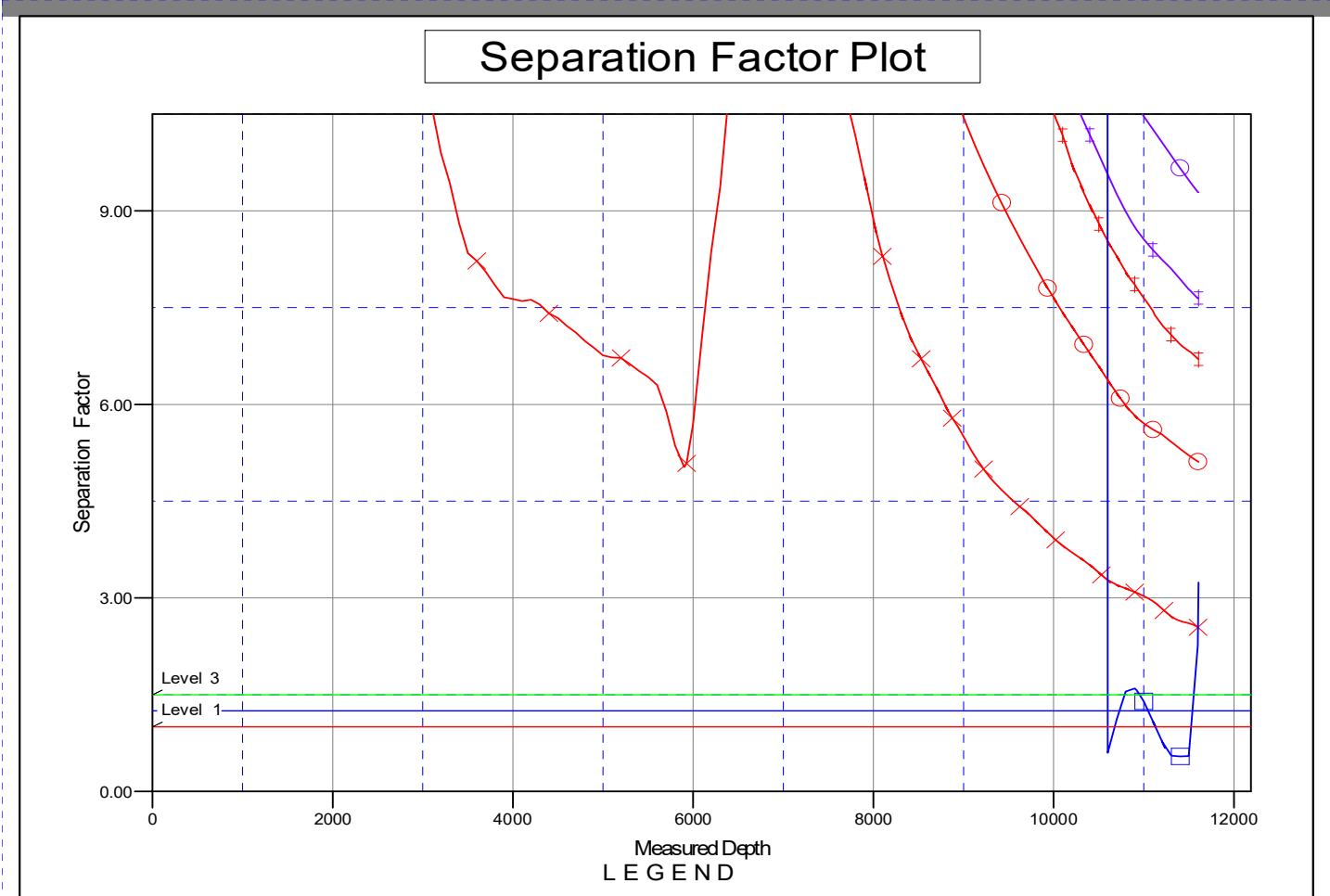
**Ladder Plot**



10-3 Final Surveys V0	Bigfoot 11-6-2, Bigfoot 11-6-2 Wellbore #1, Bigfoot 11-6-2 Final Surveys V0	Latham F11-J14-14HNB, Latham
11-1 V0	Bigfoot 11-7-3, Bigfoot 11-7-3 Wellbore #1, Bigfoot 11-7-3 Final Surveys V0	Latham F21-J24-14HNB, Latham
12-2 Final Surveys V0	Bigfoot 11-8-1, Bigfoot 11-8-1, Bigfoot 11-8-1 Plan #1 (8-29-22) V0	Latham F-J-14HNC, Latham F-
13-3 Final Surveys V0	Bigfoot 11-9-2, Bigfoot 11-9-2, Bigfoot 11-9-2 V0	Latham K21-O24-14HNB, Latham
4 Plan #1 8-25-22 V0	LATHAM 14-12 (Exist), Latham 14-12, Latham 14-12 V0	Latham K31-O34-14HNB, Latham
4 Plan #1 8-25-22 V0	Latham 11-14-14HNC, Latham 11-14-14HNC, Latham 11-14-14HNC V0	Latham K-O-14HNC, Latham K-
2 Final Surveys V0	Latham 14-11-12HNC, Latham 14-11-12HNC, Latham 14-11-12HNC V0	Latham P31-T34-14HNB, Latham
Bigfoot 11-3-4 Plan #1 8-25-22 V0	Latham 21-24-14HNC, Latham 21-24-14HNC, Latham 21-24-14HNC V0	Latham P41-T44-14HNB, Latham
Bigfoot 11-4-3 Final Surveys V0	Latham 31-34-14HNC, Latham 31-34-14HNC, Latham 31-34-14HNC V0	Latham P-T-14HNC, Latham P-
4 Plan #1 (8-29-22) V0	Latham 41-44-14HNC, Latham 41-44-14HNC, Latham 41-44-14HNC V0	Latham U41-Y44-14HNB, Latham

<b>Company:</b>	Confluence Resources	<b>Local Co-ordinate Reference:</b>	Well Bigfoot 11-5-4
<b>Project:</b>	SEC. 11-T4N-R63W	<b>TVD Reference:</b>	RKB @ 4632.0ft (Akita KB 16')
<b>Reference Site:</b>	Bigfoot Pad - SEC.11-T4N-R63W	<b>MD Reference:</b>	RKB @ 4632.0ft (Akita KB 16')
<b>Site Error:</b>	0.0 ft	<b>North Reference:</b>	True
<b>Reference Well:</b>	Bigfoot 11-5-4	<b>Survey Calculation Method:</b>	Minimum Curvature
<b>Well Error:</b>	0.0 ft	<b>Output errors are at</b>	2.00 sigma
<b>Reference Wellbore</b>	Bigfoot 11-5-4	<b>Database:</b>	US_EDM
<b>Reference Design:</b>	Survey: Survey #4 Complete survey 0 to TD	<b>Offset TVD Reference:</b>	Offset Datum

Reference Depths are relative to RKB @ 4632.0ft (Akita KB 16')      Coordinates are relative to: Bigfoot 11-5-4  
 Offset Depths are relative to Offset Datum      Coordinate System is US State Plane 1983, Colorado Northern Zone  
 Central Meridian is -105.500000      Grid Convergence at Surface is: 0.70°



**LEGEND**

10-3 Final Surveys V0	Bigfoot 11-6-2, Bigfoot 11-6-2 Wellbore #1, Bigfoot 11-6-2 Final Surveys V0	Latham F11-J14-14HNB, Latham F11-J14-14HNC, Latham F11-J14-14HNB V0
11-1 V0	Bigfoot 11-7-3, Bigfoot 11-7-3 Wellbore #1, Bigfoot 11-7-3 Final Surveys V0	Latham F21-J24-14HNB, Latham F21-J24-14HNC, Latham F21-J24-14HNB V0
12-2 Final Surveys V0	Bigfoot 11-8-1, Bigfoot 11-8-1, Bigfoot 11-8-1 Plan #1 (8-29-22) V0	Latham F-J-14HNC, Latham F-J-14HNB, Latham F-J-14HNC V0
13-3 Final Surveys V0	Bigfoot 11-9-2, Bigfoot 11-9-2, Bigfoot 11-9-2 V0	Latham K21-O24-14HNB, Latham K21-O24-14HNC, Latham K21-O24-14HNB V0
Plan #1 8-25-22 V0	LATHAM 14-12 (Exist), Latham 14-12, Latham 14-12 V0	Latham K31-O34-14HNB, Latham K31-O34-14HNC, Latham K31-O34-14HNB V0
Plan #1 8-25-22 V0	Latham 11-14-14HNC, Latham 11-14-14HNC, Latham 11-14-14HNC V0	Latham K-O-14HNC, Latham K-O-14HNB, Latham K-O-14HNC V0
2 Final Surveys V0	Latham 14-11-12HNC, Latham 14-11-12HNC, Latham 14-11-12HNC V0	Latham P31-T34-14HNB, Latham P31-T34-14HNC, Latham P31-T34-14HNB V0
Bigfoot 11-3-4 Plan #1 8-25-22 V0	Latham 21-24-14HNC, Latham 21-24-14HNC, Latham 21-24-14HNC V0	Latham P41-T44-14HNB, Latham P41-T44-14HNC, Latham P41-T44-14HNB V0
Bigfoot 11-4-3 Final Surveys V0	Latham 31-34-14HNC, Latham 31-34-14HNC, Latham 31-34-14HNC V0	Latham P-T-14HNC, Latham P-T-14HNB, Latham P-T-14HNC V0
4 Plan #1 (8-29-22) V0	Latham 41-44-14HNC, Latham 41-44-14HNC, Latham 41-44-14HNC V0	Latham U41-Y44-14HNB, Latham U41-Y44-14HNC, Latham U41-Y44-14HNB V0