



Scale: 5" / 100'
Measured Depth Log

Well Name Bigfoot 11-5-4_Horizontal Mudlog_Final

Location S11 T4N R63W, 2355' FSL 620' FWL

State Colorado

County Weld

Country USA

Rig Number Akita 522

API Number 05-123-517640000

AFE # 101062

Geographic Region Rockies

Field Platte

Spud Date 9/4/2022

Drilling Completed 12/2/2022

Surface Coordinates N 40° 19' 34.10", W 104° 24' 46.19"

Bottom Hole Coordinates N 40° 19' 35.33", W 104° 23' 51.14"

Ground Elevation 4,616'

K.B. Elevation 4,632'

Logged Interval 6,400' To 11,608'

Total Depth 11,608'

Formation Codell

Type of Drilling Fluid OBM

Operator

Company Confluence Resources LP

Address 1001 17th Street, Suite 1250
Denver, CO, 80202



Geologist

Name Cassidy Miller, Aryn Rowe, Nathan Brown

Company Confluence Resources LP

Address 1001 17th Street, Suite 1250
Denver, CO, 80202



Other

Loggers: Steven Selby / Joshua Foust

Sample Catchers: Justin Moon / Jianwei Hou

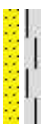
Equipment: ML-531

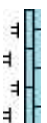
Start Date: 11/27/2022

End Date: 12/02/2022

Services: Mudlogging, XRD, XRF, Geosteering

Rock Types


 SHALE GRAY SANDSTONE

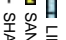
 LIMESTONE MARLSTONE

 CHALK

Accessories

Stringer

 LIMESTONE STRINGER

 SANDSTONE STRINGER

 SHALE STRINGER

Minerals

 CALCAREOUS

Other Symbols

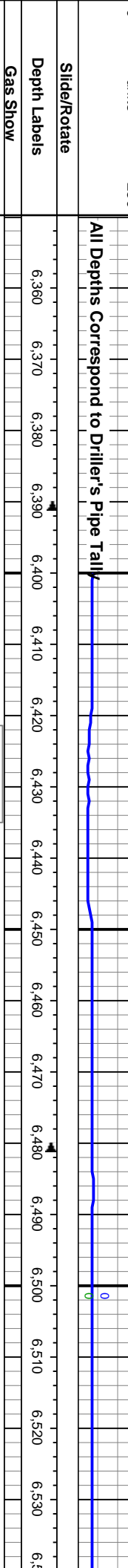
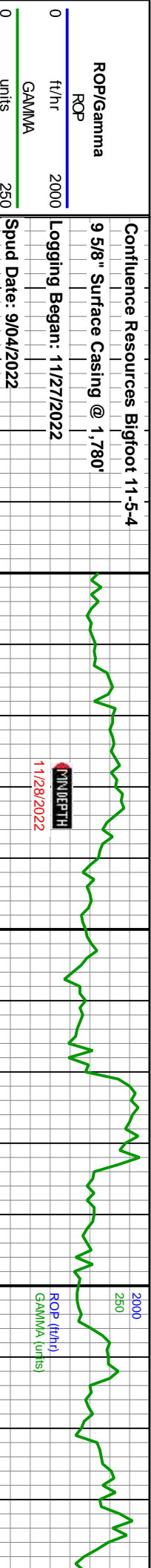
Engineering

 CONNECTION (LEFT)

 CONNECTION GAS

 FAULT

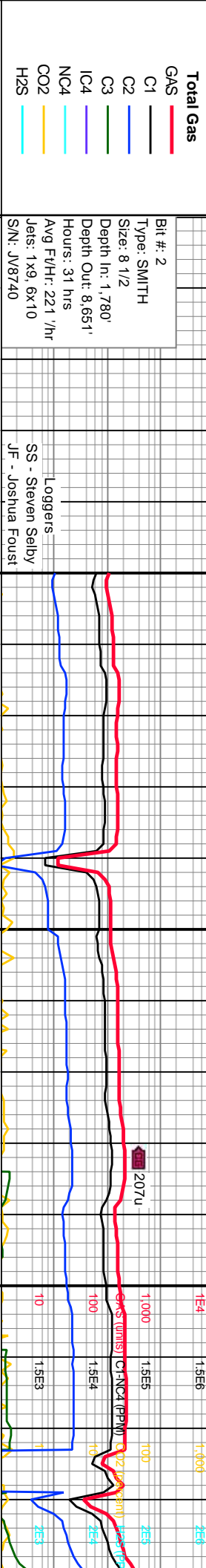
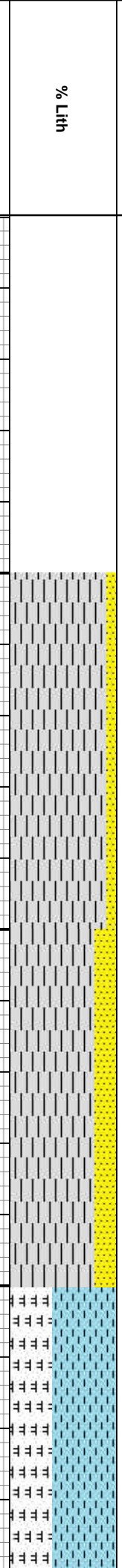
 MIN DEPTH



Notes

JF Sharon Springs WOB: 13.3k MD: 6,450' MW IN: 9.6 INC: 35.58° VIS IN: 55 RPM: 25 SPM: 230 AZM: 117.4° PP: 3.178 VIS OUT: 52 MW OUT: 9.5 TVD: 6,181.89' VS: -237.34'

Nio A Chalk MD: 6,53' INC: 43.6° AZM: 110° TVD: 6,222.89' VS: -181'



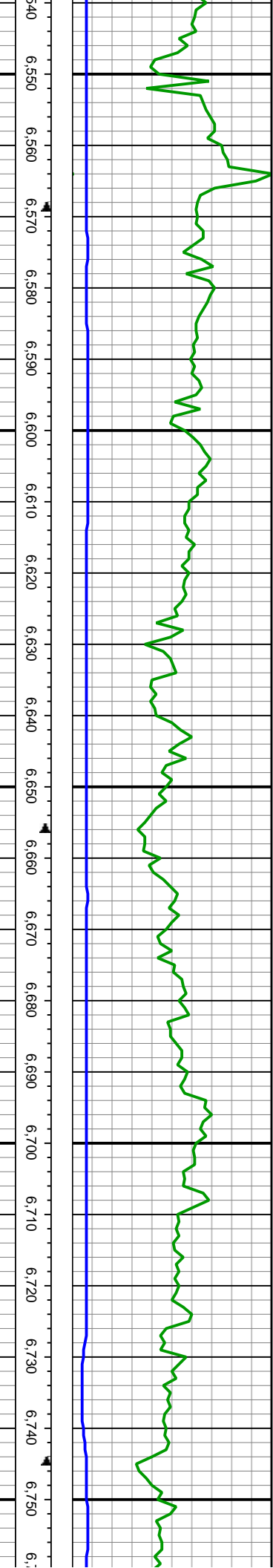
Lithology Descriptions

90% SH: dk gry, sft, blk, f
gr lam, vit; 10% SS: med
gry, dk gry, ofwh, med
gr, mod srt, sb rnd, cons,
sil, hd, sl calc;

80% SH: dk gry, sft, blk, f
gr lam, vit; 20% SS: med
gry, dk gry, ofwh, med
gr, mod srt, sb rnd, cons,
sil, hd, sl calc;

60% CHK: ll gry,
blk, sb rnd, sft,
40% MRLST: dk gry,
med gr, sb a
hd, sl calc





8° 6° 1° 55'

6,570 MD / 6,272 TVD

Nio A Marl

WOB: 14.9k
RPM: 25
SPM: 230
PP: 3.318

MD: 6.625'
INC: 48.1°
AZM: 99.5°
TVD: 6.310.29'
VS: -119.44'

6,614' MD / 6,303' TVD

Nio B Chalk

6,691' MD / 6,352' TVD

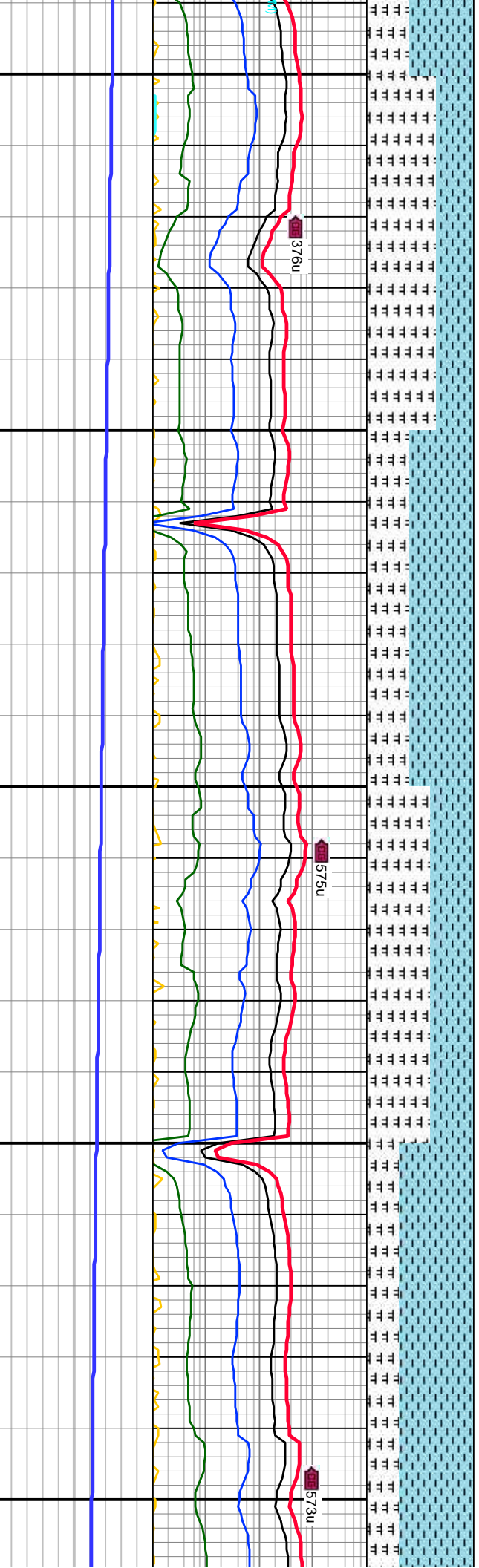
Nio B Marl

MW IN: 9.6
VIS IN: 56
MW OUT: 9.5
VIS OUT: 55

MD: 6.714'
INC: 52.83°
AZM: 95.0°
TVD: 6.366.95'
VS: -52.2'

6,735' MD / 6,378' TVD

Nio C Chalk



offwht, sb calc:

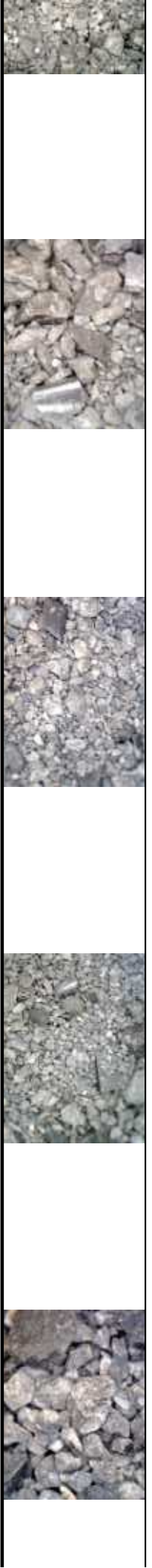
60% MRLST: dk gry, med gry, med gr, sb ang, dns, sl hd, vit, sl calc: 40% CHK: lt gry, offwht, sb blk, sb rnd, sft, calc, tr pyr

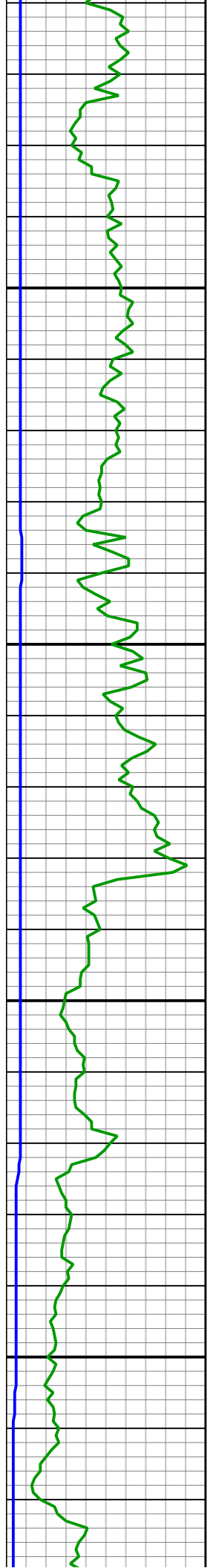
60% CHK: pred lt gry, offwht, sb blk, sb rnd, sft, calc:

40% MRLST: dk gry, med gry, med gr, sb ang, dns, sl hd, sl calc

60% MRLST: med gry, dk gry, med gr, sb ang, dns, sl hd, sl calc: 40% CHK: lt gry, offwht, sb blk, sb rnd, sft, calc, tr pyr

70% CHK: lt gry, mot wht, sb blk, sb rnd, sft, calc: 30% MRLST: dk gry, med gry, med gr, sb ang, dns, sl hd, vit, sl calc





MD: 6,803'
 INC: 60.77°
 AZM: 95.9°
 TVD: 6,415.64'
 VS: 20.29'

WOB: 20K
 RPM: 25
 SPM: 230
 PP: 3,336

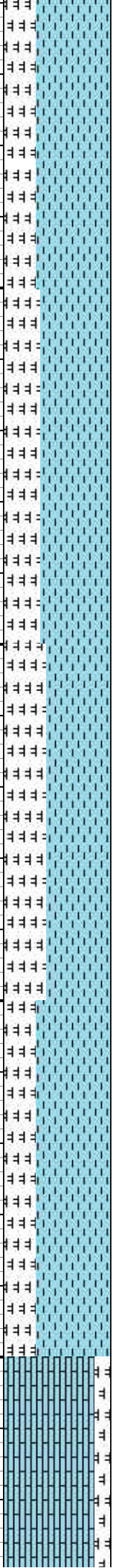
MW IN: 9.6
 VIS IN: 48
 MW OUT: 9.6
 VIS OUT: 45

Nio C Marl
 6,880 MD / 6,448 TVD

MD: 6,891'
 INC: 69.68°
 AZM: 97.6°
 TVD: 6,452.48'
 VS: 98.44'

SS
 MD: 6,980'
 INC: 73.52°
 AZM: 93.9°
 TVD: 6,480.58'
 VS: 180.76'

Ft Hays
 6,975 MD / 6,47



441u

213u

POLY-FLOW

70% CHK: lt gry, mot wht,
 sb blkly, sb rnd, sft, calc;
 30% MRLST: dk gry, med
 gry, med gr, sb ang, dns,
 sl hd, sl calc, tr pyr

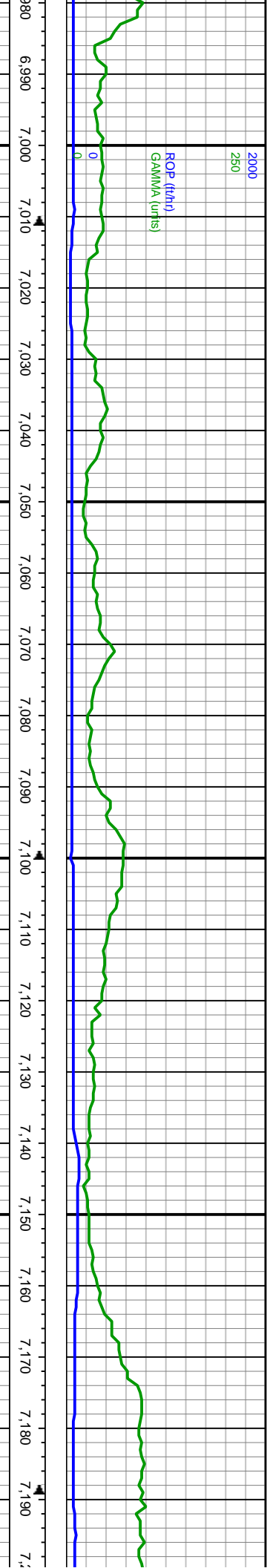
65% CHK: lt gry, mot wht, sb
 blkly, sb rnd, sl hd, calc;
 35% MRLST: pred dk gry,
 med gry, med gr, sb ang,
 dns, sl hd, vit, sl calc, tr pyr

60% CHK: pred lt gry, mot
 wht, sb blkly, sb rnd, sl
 hd, calc;
 40% MRLST: dk gry, med
 gry, med gr, sb ang, dns,
 sl hd, sl calc

70% CHK: pred lt gry, mot
 wht, lt brn, sb blkly, sb rnd,
 sl hd, calc;
 30% MRLST: dk gry, med
 gry, med gr, sb ang, dns,
 sl hd, sl calc, tr pyr

80% :l
 mdst,
 20% W
 dk-lt b
 ang, sl
 calc





WOB: 11k
 RPM: 25
 SPM: 230
 PP: 3.019

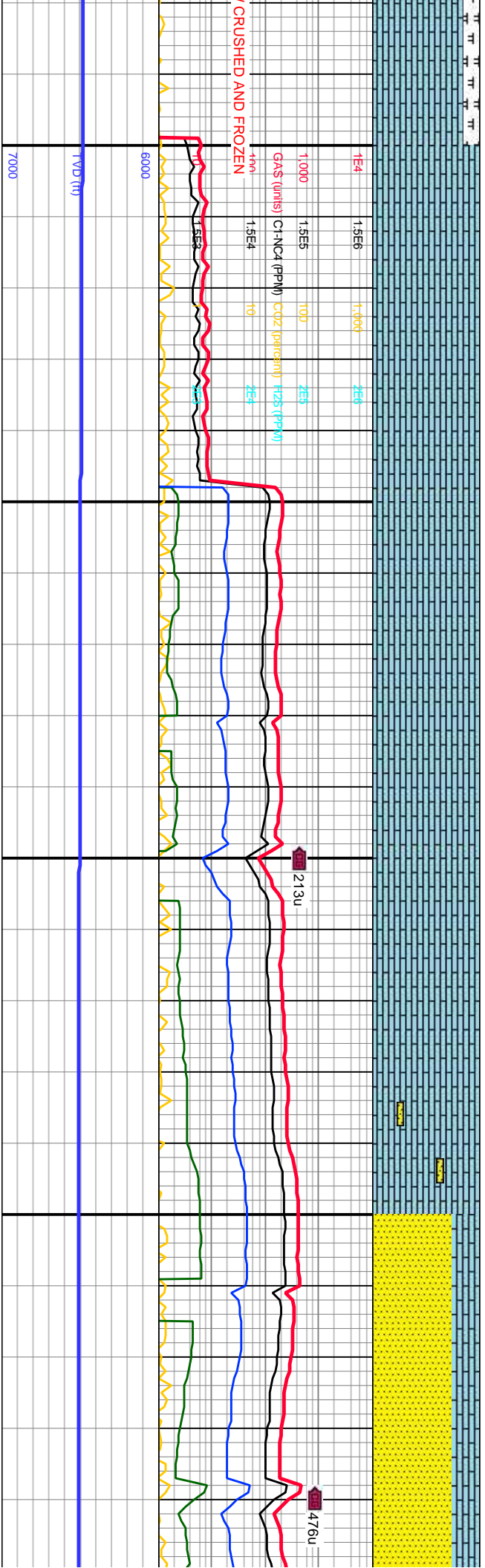
MW IN: 9.6
 VIS IN: 46
 MW OUT: 9.6
 VIS OUT: 46

MD: 7,069'
 INC: 80.51°
 AZM: 90.2°
 TVD: 6,500.57'
 VS: 263.84'

MD: 7,158'
 INC: 85.54°
 AZM: 89.7°
 TVD: 6,511.37'
 VS: 347.53'

Codell
 7,163' MD / 6,511' TVD

WOB:
 RPM:
 SPM:
 PP: 2



S lt gy-lt brn-tn, mteckl, dns, slmrlty; RLST: dk gy-occ o plty, sb wxy lstr,

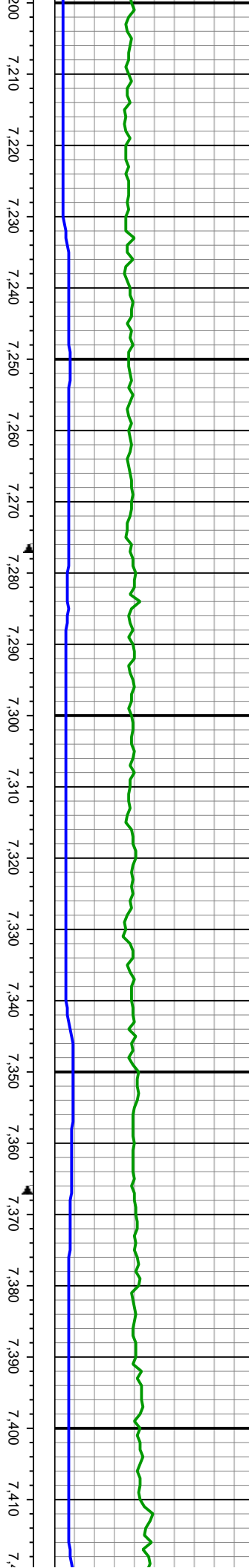
100% LS: lt gy, crm-tn, gnst, crpxln, dns, lith, arg-mily i.p.

100% LS: lt gy, crm-tn, gnst, crpxln, dns, lith, arg-mily i.p.

100% LS: lt gy, crm-tn, gnst, crpxln, dns, lith, arg-mily i.p.; tr SS tn, frm, sli fr-fri, vf-fg.

75% SS: brn, lt gy, tn, frm, sli fr-fri, vf-fg, mod srt'd, sbang-sbrnd, sli calc, tr dk SH; 25% LS: crm-tn, lt gy, sme md gy, gnst, crpxln, dns, lith, arg-mily i.p.





Land Curve
 9K MD: 7.247'
 25 INC: 89.99°
 230 AZM: 89.5°
 755 TVD: 6,513.52'
 VS: 431.57'

MW IN: 9.55
 VIS IN: 46
 MW OUT: 9.55
 VIS OUT: 46

MD: 7.336'
 INC: 89.09°
 AZM: 89.5°
 TVD: 6,514.24'
 VS: 515.71'

WOB: 8K
 RPM: 80
 SPM: 230
 PP: 3.219

MD
 INC
 AZM
 TVD
 VS:

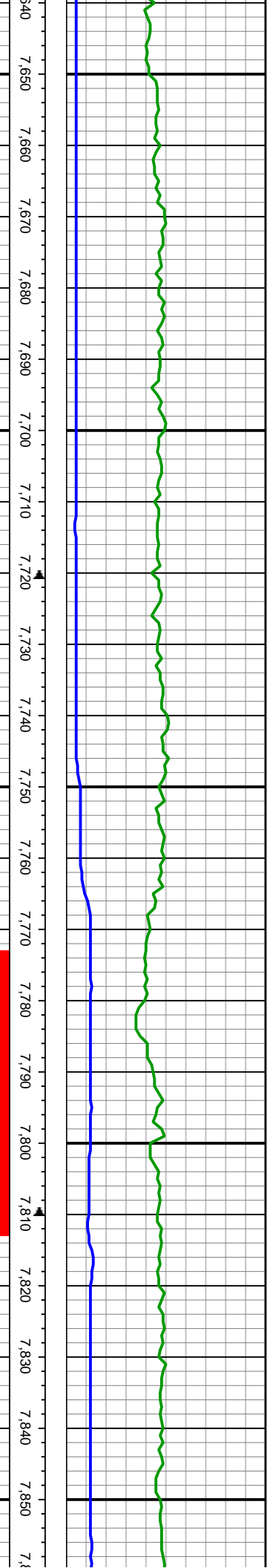
2582u

4038u

100% SS: predy lt gry-med
 gry cmt w/ gry-offwht-clr gr.
 sme brn, f-v f gr, sb rd-sb
 ang, pred uncons w/ sme
 sil mix, com tr SH

100% SS: predy lt gry-med
 gry cmt w/ gry-offwht-clr gr.
 f-v f gr, sb rd-sb ang, pred
 uncons w/ sme sil mix,
 com tr SH





MD: 7.690'
 INC: 89.88°
 AZM: 89.6°
 TVD: 6.514.36'
 VS: 850.46'

MW IN: 9.65
 VIS IN: 42
 MW OUT: 9.65
 VIS OUT: 42

MD: 7.778'
 INC: 91.69°
 AZM: 89.3°
 TVD: 6.513.16'
 VS: 933.6'

WOB: 15k
 RPM: 100
 SPM: 230
 PP: 3.392

MC
 IN
 AZ
 TV
 VS

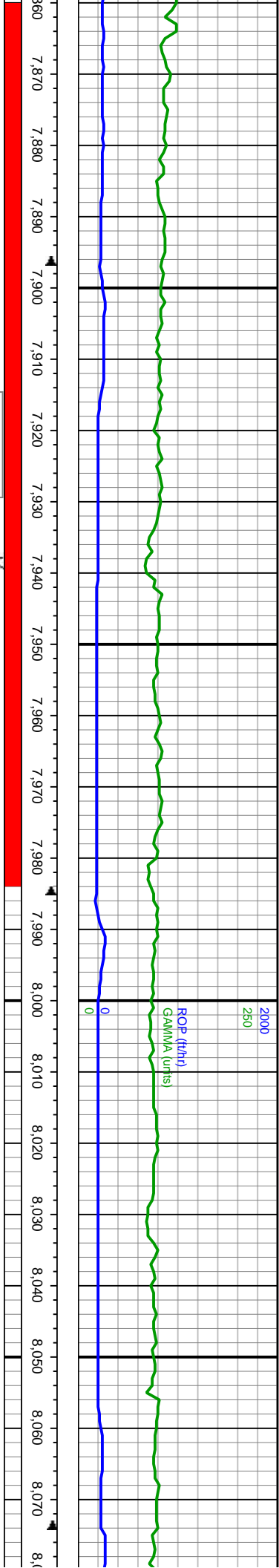
3844u

3711u

100% SS: predy lt gry-med
 gry cmt wi gry-offwht-clr gr.
 sme brn, f-v f gr, sb rd-sb
 ang, pred uncons wi sme
 sil mix, com tr SH

100% SS: predy lt gry-med
 gry cmt wi gry-offwht-clr
 gr, sme brn, f-v f gr, sb
 rd-sb ang, pred uncons wi
 sme sil mix, arg, com tr
 SH





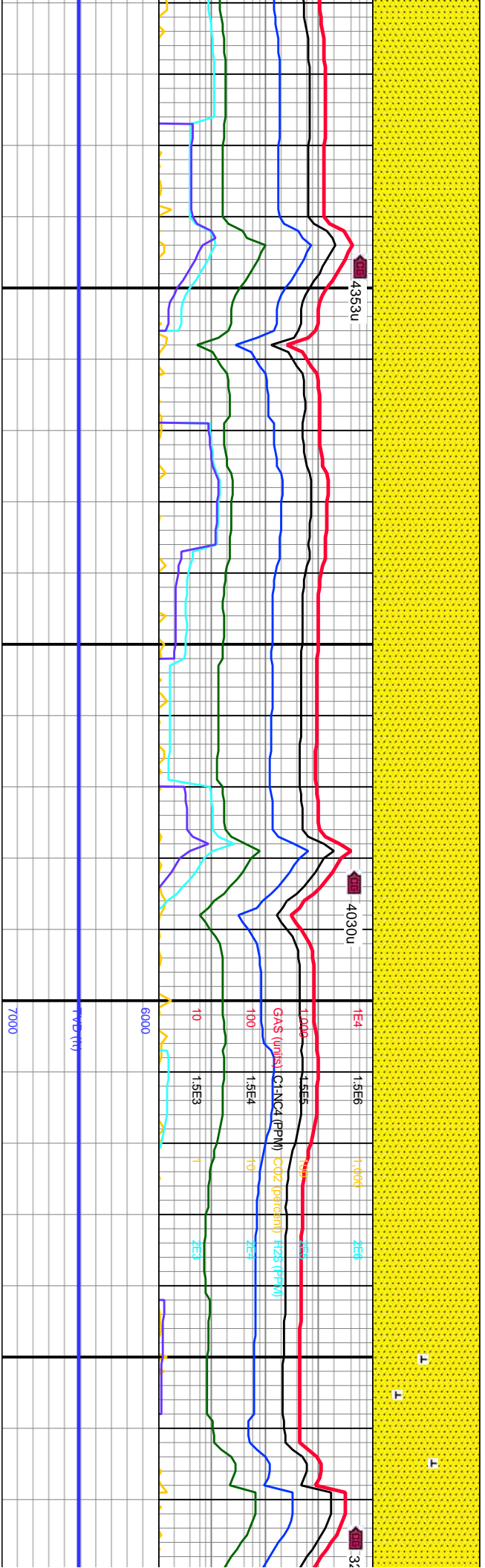
: 7.865'
 C: 91.74°
 M: 89.3°
 D: 6.510.55'
 : 1.015.72'

MW IN: 9.65
 VIS IN: 42
 MW OUT: 9.65
 VIS OUT: 42

MD: 7.954'
 INC: 92.1°
 AZM: 89.2°
 TVD: 6.507.57'
 VS: 1.099.66'

MOB: 9K
 RPM: 100
 SPM: 172
 PP: 2.622

MD: 8.043'
 INC: 89.97°
 AZM: 89.2°
 TVD: 6.506.04'
 VS: 1.183.61'

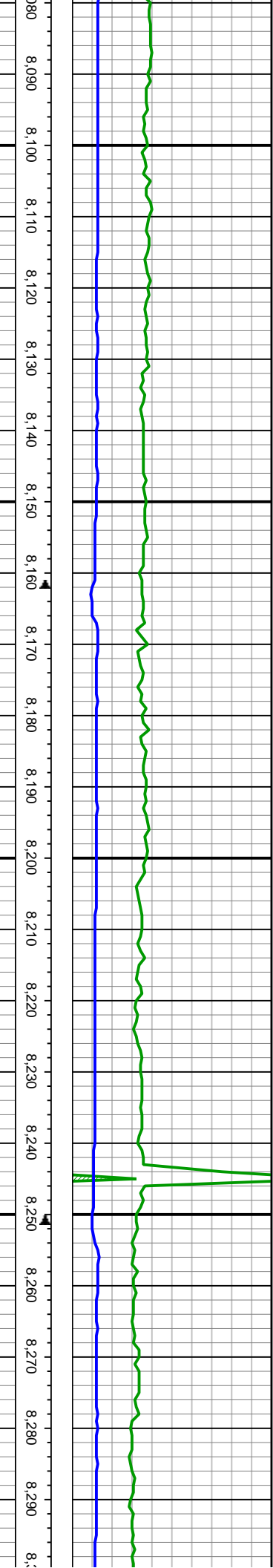


100% SS: predly lt gry-med
 gry cmt wi gry-offwht-clr gr,
 sme brn, f-v f gr, sb rd-sb
 ang, pred uncons wi sme
 sil mix, com tr SH

100% SS: lt gry-med gry
 cmt wi gry-offwht-clr gr,
 sme brn, f-vf gr, sb rd-sb
 ang, pred uncons wi sme
 sil mix, sme tr SH, carb

100%
 cmt wi
 sme b
 ang, p
 sil mix





MW IN: 9.7
 VIS IN: 41
 MW OUT: 9.7
 VIS OUT: 41

MD: 8,131'
 INC: 90.25°
 AZM: 89.1°
 TVD: 6,505.88'
 VS: 1,266.61'

WOB: 15K
 RPM: 90
 SPM: 229
 PP: 3.583

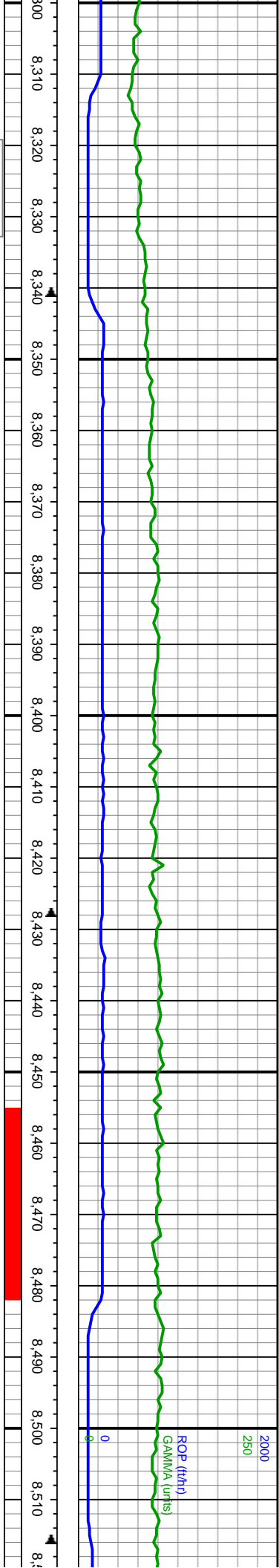
MD: 8,220'
 INC: 89.97°
 AZM: 89.0°
 TVD: 6,505.71'
 VS: 1,350.49'

SS: lt gry-med gry
 gry-offwht-clr gr,
 rn, f-vf gr, sb rd-sb
 red uncons w/ sme
 , calc

100% SS: lt gry-med gry
 cnt w/ gry-offwht-clr gr,
 sme brn, f-vf gr, sb rd-sb
 ang, pred uncons w/ sme
 sil mtz, v calc

100% SS: lt gry-med gry
 cnt w/ gry-offwht-clr gr,
 sme brn, f-vf gr, sb rd-sb
 ang, pred uncons w/ sme
 sil mtz, v calc, sl tr LS

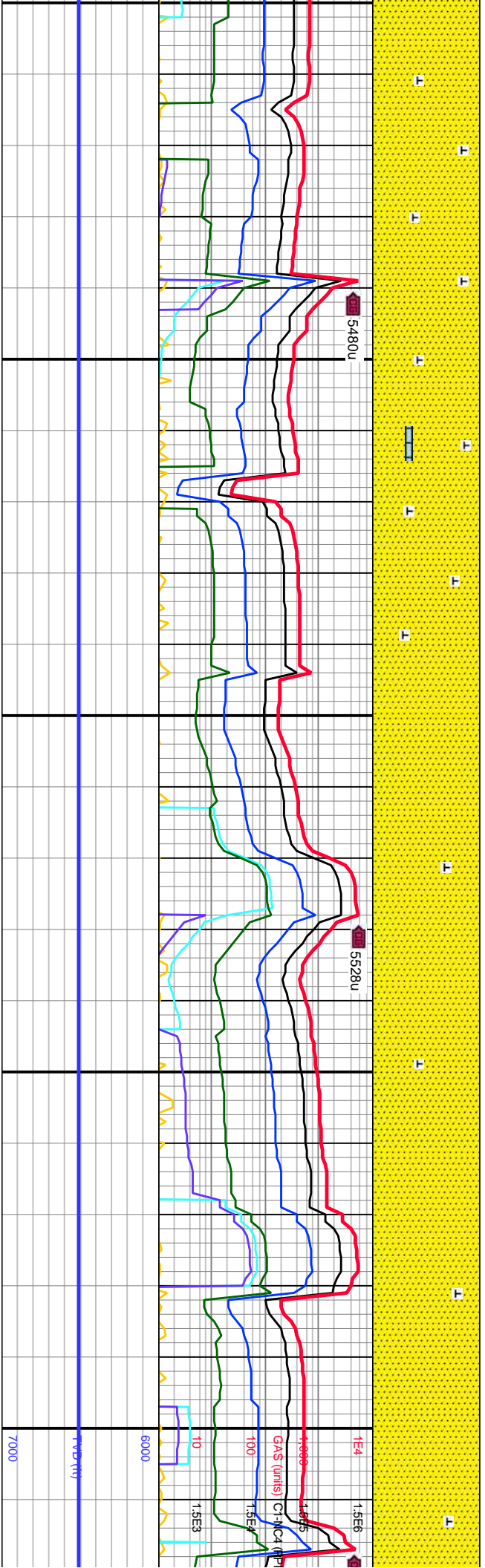




MW IN: 9.7
VIS IN: 43
MW OUT: 9.7
VIS OUT: 43

WOB: 14k MD: 8,397'
RPM: 90 INC: 88.86°
SPM: 226 AZM: 87.8°
PP: 3.479 TVD: 6,506.11'
VS: 1,516.86'

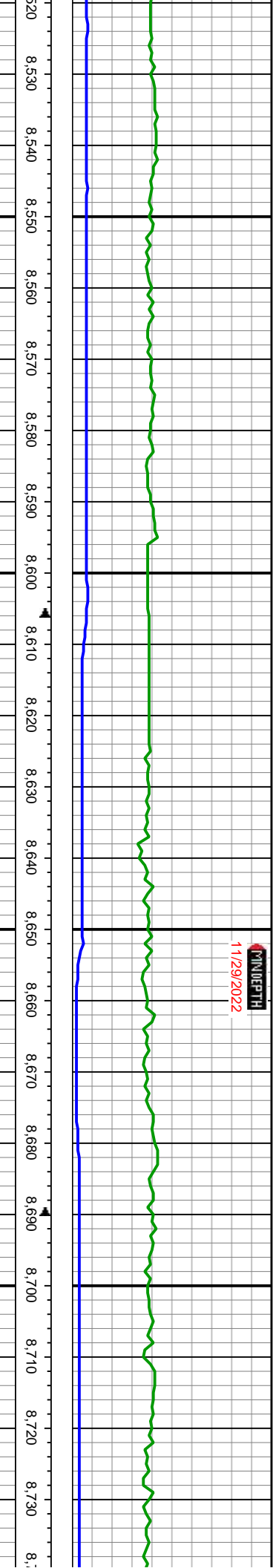
MD: 8,485'
INC: 88.81°
AZM: 86.3°
TVD: 6,507.9'
VS: 1,598.71'



100% SS: med gry-lt
gry-gry-offwhit, f-gr, mod
srt, sb rd-sb ang, cons,
sl hd, calc mtx, tr mica,
tr LS

100% SS: med gry-lt
gry-gry-mot offwhit, f-gr,
mod srt, sb rd-sb ang,
cons, sl hd, calc mtx, tr
pyr





MW IN: 9.7
VIS IN: 48
MW OUT: 9.7
VIS OUT: 45

WOB: 10.4K
RPM: 90
SPM: 240
PP: 3.632

MD: 8.658'
INC: 89.74°
AZM: 85.0°
TVD: 6,509.72'
VS: 1,757.93'

JF

TOOH FOR RSS TROUBLESHOOTING

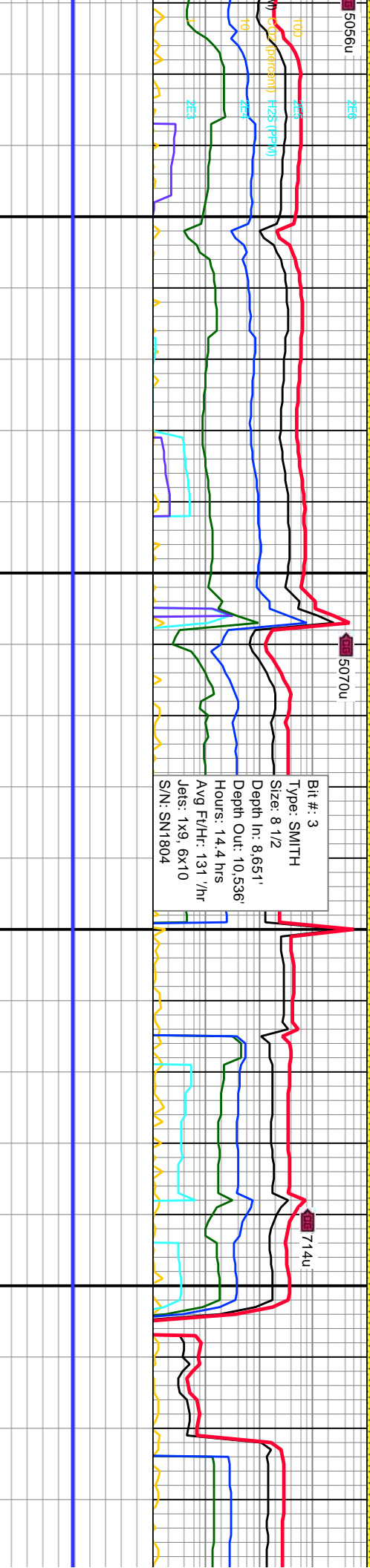


5056u

5070u

Bit #: 3
Type: SMITH
Size: 8 1/2
Depth In: 8,651'
Depth Out: 10,536'
Hours: 14.4 hrs
Avg Ft/Hr: 131 '/hr
Jets: 1x9, 6x10
S/N: SM1804

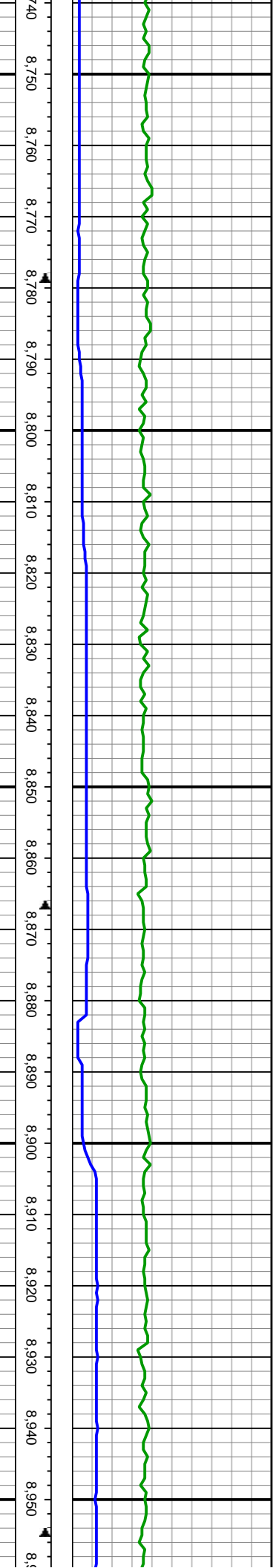
714u



100% SS: med gry-lt
gry-gry-mot, f-gr, mod srt,
sb rd-sb ang, cons, sl hd,
calc mtx

100% SS: med gry-lt
gry-gry-mot-tr black, f-gr,
mod srt, sb rd,
cons-sme unconcs, sl fri,
sl calc



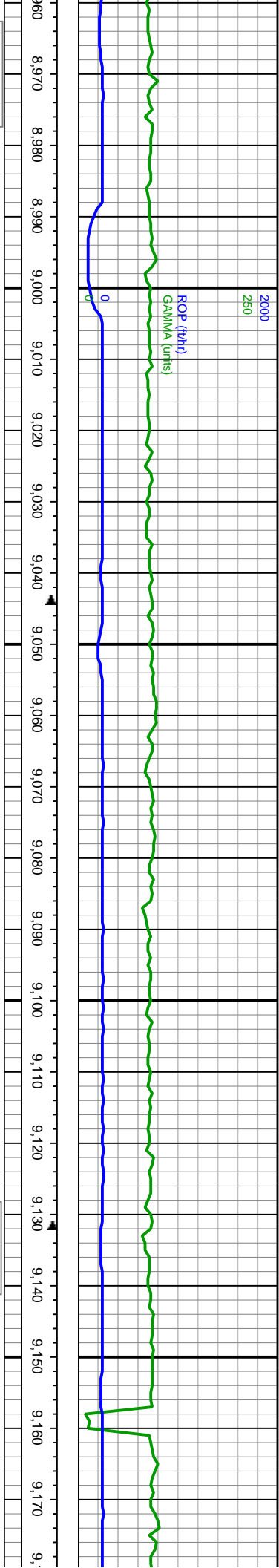


MD: 8,747'
 INC: 90.87°
 AZM: 88.1°
 TVD: 6,509.25'
 VS: 1,840.45'
 MW IN: 10
 VIS IN: 48
 MW OUT: 10.2
 VIS OUT: 46
 WOB: 3.5K
 RPM: 90
 SPM: 226
 PP: 3.289
 MD: 8,835'
 INC: 89.85°
 AZM: 88.3°
 TVD: 6,508.69'
 VS: 1,922.95'
 MD: 8,923'
 INC: 89.56°
 AZM: 89.4°
 TVD: 6,509.14'
 VS: 2,005.8'

100% SS: pred med
 gry-lt-whi-mot, f-gr, mod
 srt, sb rd-sb ang,
 cons-sme unconcs, sl fri,
 calc mtx

100% SS: pred lt
 gry-med-whi-mot, f-gr, p
 srt, sb rd-sb ang,
 cons-sme unconcs, sl
 hd-hd, calc mtx





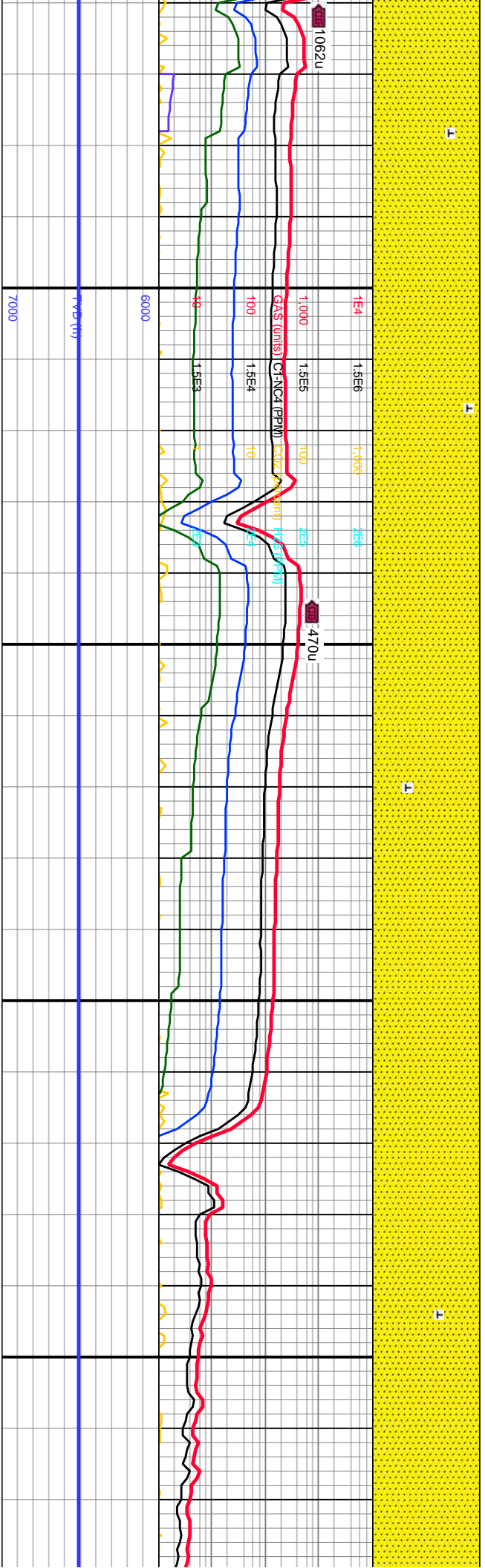
MW IN: 10
VIS IN: 48
MW OUT: 10.1
VIS OUT: 45

WOB: 9.1k MD: 9,012'
RPM: 90 INC: 90.15°
SPM: 225 AZM: 90.4°
PP: 3.260 TVD: 6,509.36'
VS: 2,090.12'

MD: 9,099'
INC: 90.37°
AZM: 90.2°
TVD: 6,508.96'
VS: 2,172.73'

MW IN: 9.9
VIS IN: 48
MW OUT: 10
VIS OUT: 47

TROUBLESHOOTING GAS SYSTEM

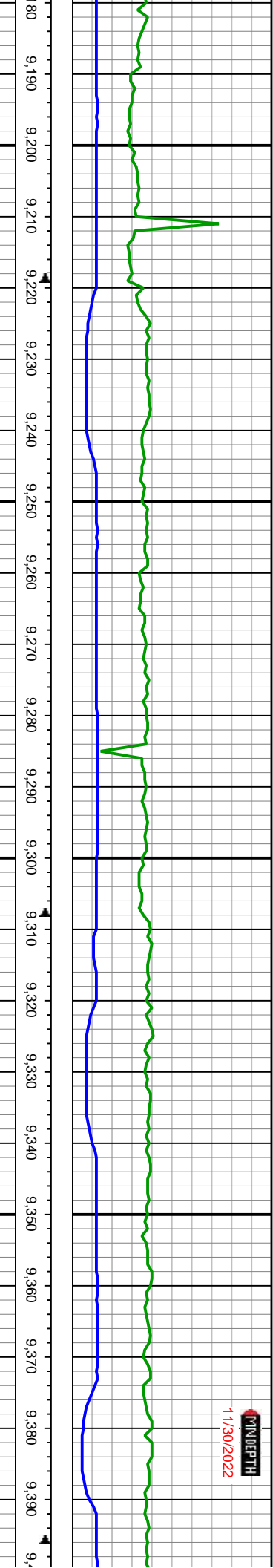


100% SS: pred lt
gry-med-whit-mot, f-gr, p
srt, sb rd-sb ang,
cons-sme uncons, sl fri,
calc mtx, tr pyr

100% SS: pred med
gry-lt-gry, f-gr, mod w srt,
sb rd-sb ang, cons, hd,
calc mtx

100% SS
gry-lt-g
rd-sb e
calc





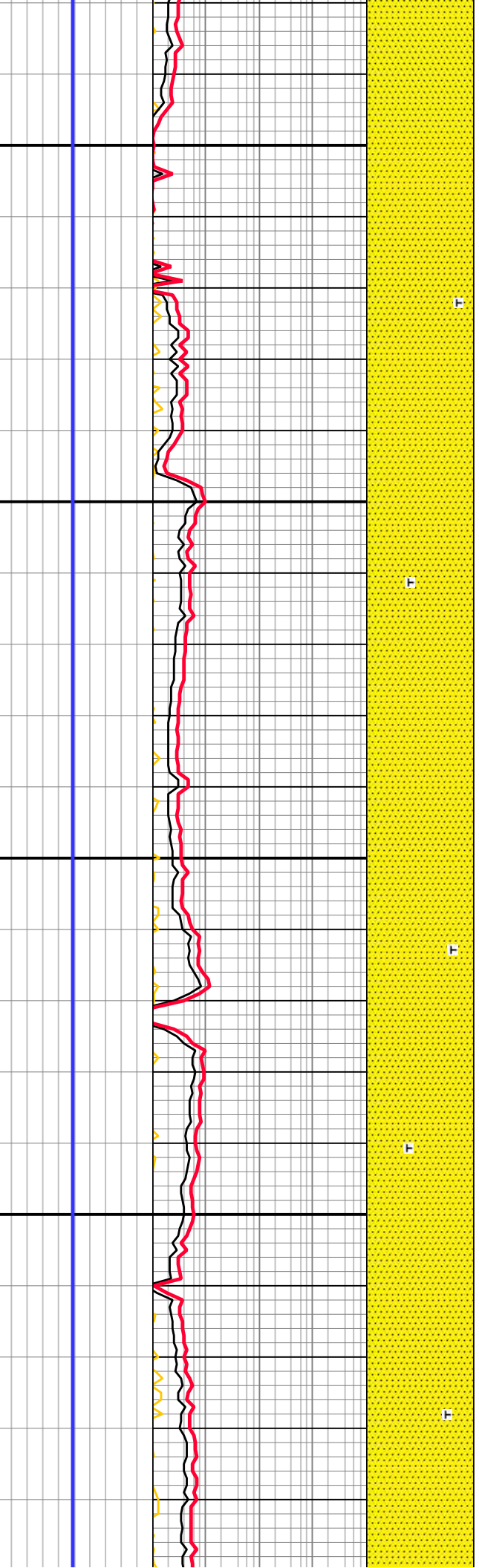
MD: 9,187'
WOB: 24k
NOC: 90.14°
RPM: 90
SPM: 226
VD: 6,508.57'
PP: 3.628
S: 2,256.22'

MD: 9,276'
INC: 89.74°
AZM: 89.9°
TVD: 6,508.67'
VS: 2,340.58'

MW IN: 9.85
VIS IN: 48
MW OUT: 9.9
VIS OUT: 46

MD: 9,364'
INC: 89.42°
AZM: 89.9°
TVD: 6,509.31'
VS: 2,423.93'

WOB
RPM
SPM
PP: 3.628

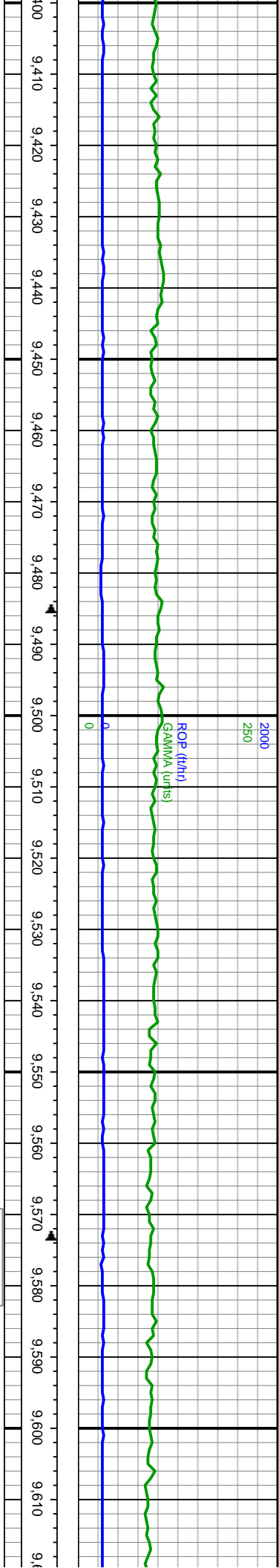


SS: pried med
gry, f-gr, mod srt, sb
ng, cons, hd, sl

100% SS: pried med
gry-dk gry, f-gr, mod
srt-p srt, sb rnd-sb ang,
cons, sl hd-hd, sl calc.

100% SS: pried med
gry-dk gry, f-gr, mod srt,
sb rnd-sb ang, cons, sl
hd-hd, calc, sl carb, free
cal



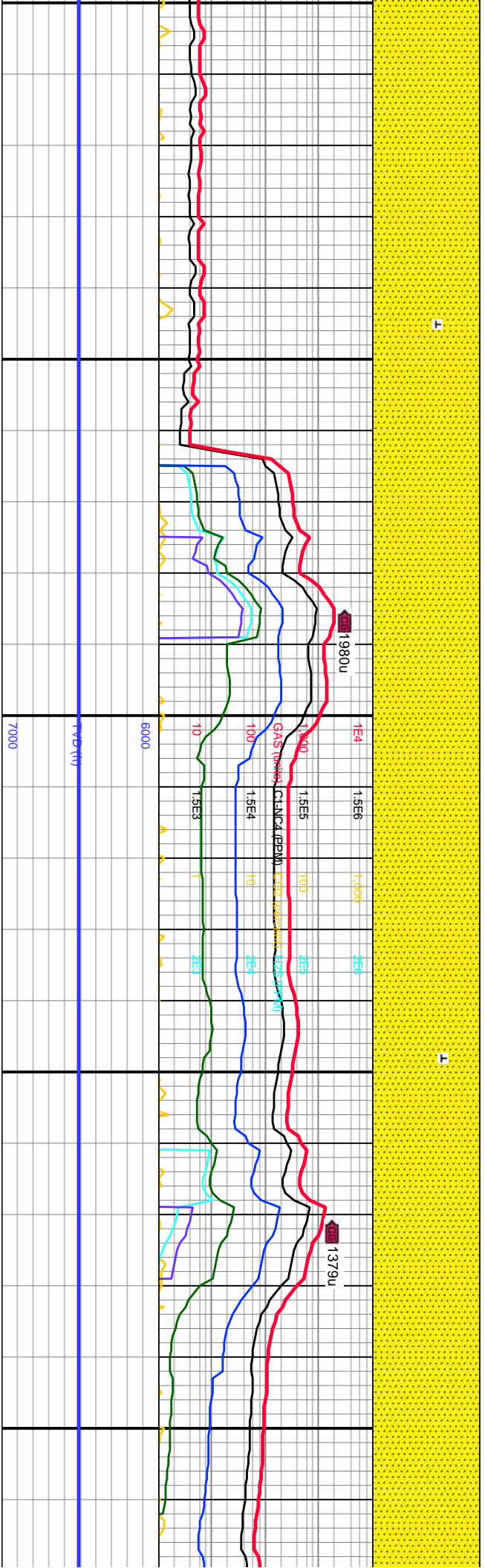


MD: 9,453'
INC: 89.69°
AZM: 88.8°
TVD: 6,510'
VS: 2,507.98'

MD: 9,541'
INC: 89.5°
AZM: 88.8°
TVD: 6,510.62'
VS: 2,590.81'

MW IN: 9.7
VIS IN: 4.7
MW OUT: 9.8
VIS OUT: 4.5

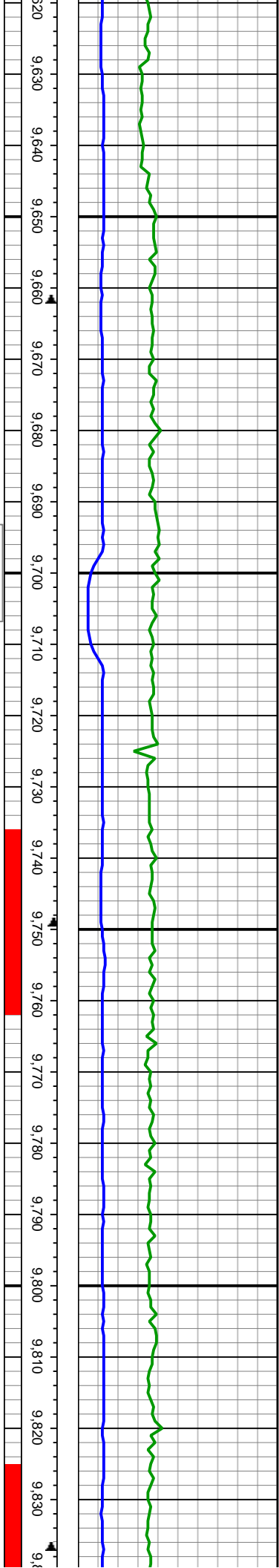
WOB: 17.1k
RPM: 90
SPM: 226
PP: 3.630



100% SS: pred dk
gry-blk, f-gr, mod srt, sb
rnd-sb ang, cons, hd, sl
carb, sl calc

100% SS: pred med gry-lt
gry, f-gr, p srt, sb rnd-sb
ang, cons, sl hd, sl carb,
sl calc

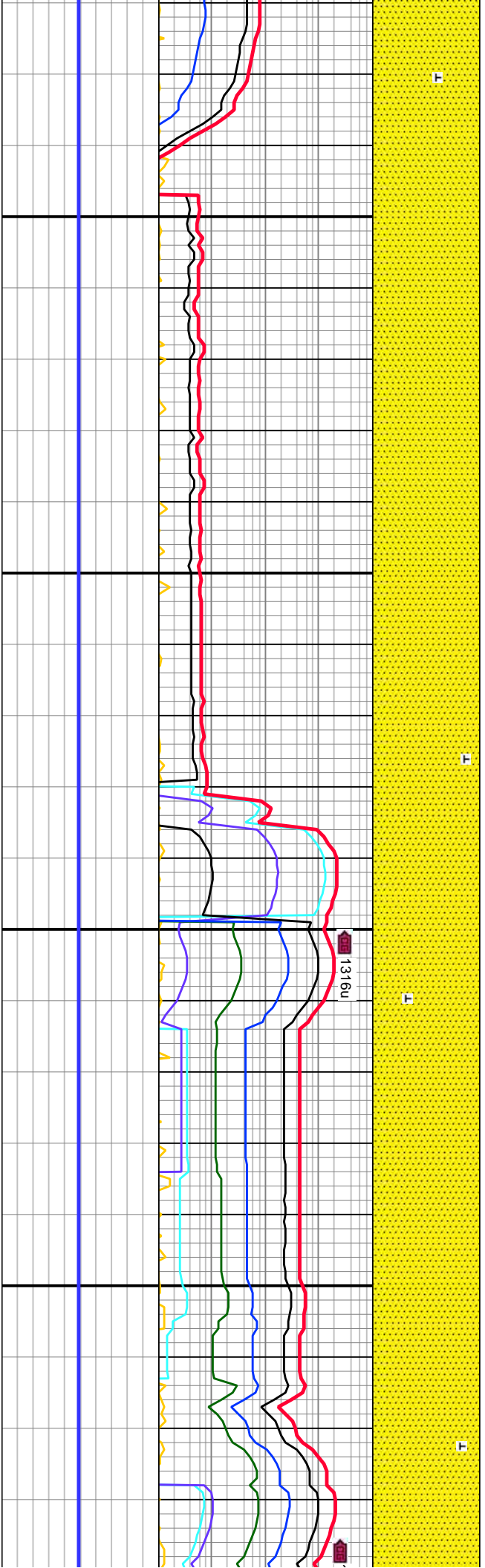




MD: 9,629' INC: 89.11° AZM: 88.8° TVD: 6,511.68' VS: 2,673.65'
 MD: 9,717' INC: 90.05° AZM: 89.2° TVD: 6,512.32' VS: 2,756.59'
 MD: 9,805' INC: 90.23° AZM: 88.6° TVD: 6,512.1' VS: 2,839.46'

MW IN: 9.8
 VIS IN: 48
 MW OUT: 9.8
 VIS OUT: 46

TROUBLESHOOTING GAS SYSTEM



100% SS: pred med
 gry-lt gry, f-gr, mod srt,
 sb mnd-sb ang, cons, sl
 hd, carb, calc mtx

100% SS: pred lt gry-med
 gry, f-gr, mod srt, sb
 mnd-sb ang, cons, sl hd, sl
 carb, calc mtx



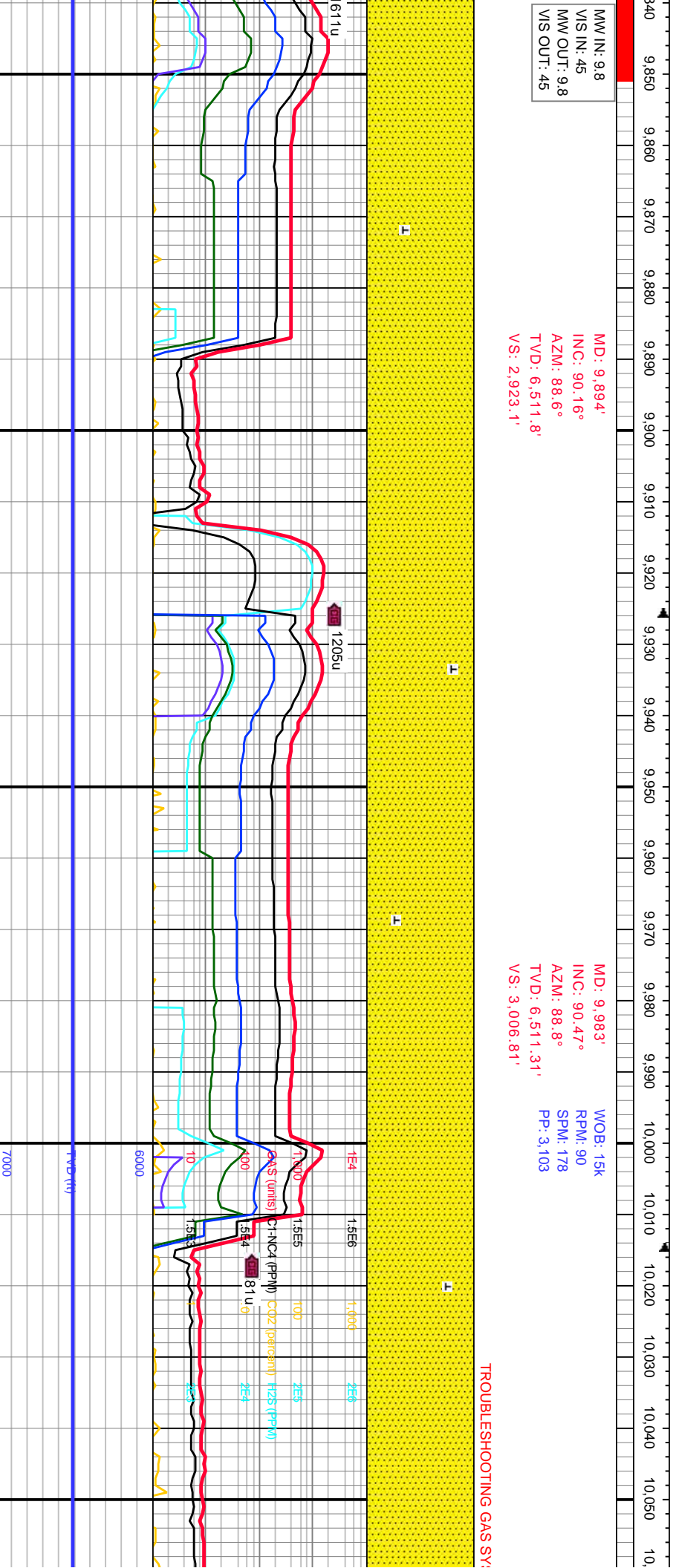
MW IN: 9.8
 VIS IN: 45
 MW OUT: 9.8
 VIS OUT: 45

MD: 9,894'
 INC: 90.16°
 AZM: 88.6°
 TVD: 6,511.8'
 VS: 2,923.1'

MD: 9,983'
 INC: 90.47°
 AZM: 88.8°
 TVD: 6,511.31'
 VS: 3,006.81'

WOB: 15k
 RPM: 90
 SPM: 178
 PP: 3.103

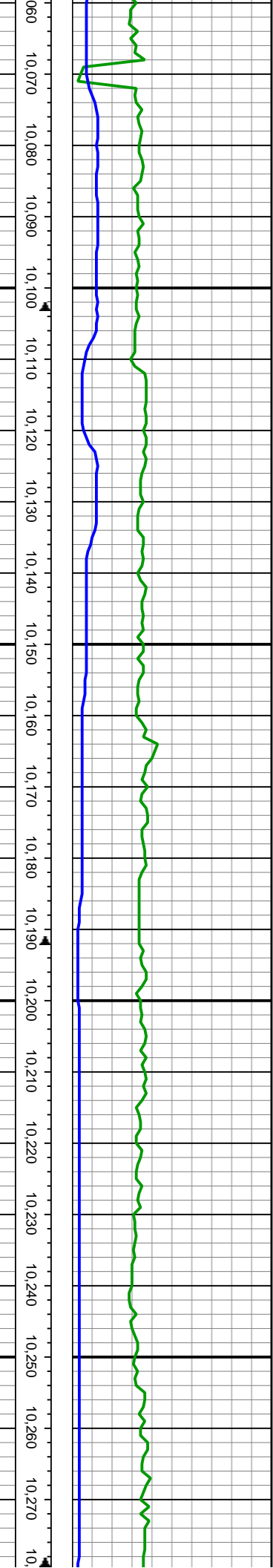
TROUBLESHOOTING GAS SY:



100% SS: pred lt gry-med
 gry, f-gr, p srt, sb rnd-sb
 ang, cons-some uncon, sl
 hd, sl carb, calc mtx, free
 cal

100% SS: pred lt gry-med
 gry, f-gr, mod srt, sb
 rnd-sb ang, cons-some
 uncon, sl hd-hd, sl carb,
 calc mtx





MD: 10,071' SS

INC: 90.36°

AZM: 88.6°

TV D: 6,510.67'

VS: 3,089.57'

STEM.

MW IN: 9.9

VIS IN: 51

MW OUT: 9.9

VIS OUT: 51

MD: 10,160'

INC: 89.98°

AZM: 88.4°

TV D: 6,510.4'

VS: 3,173.17'

WOB: 15K

RPM: 90

SPM: 178

PP: 3.103

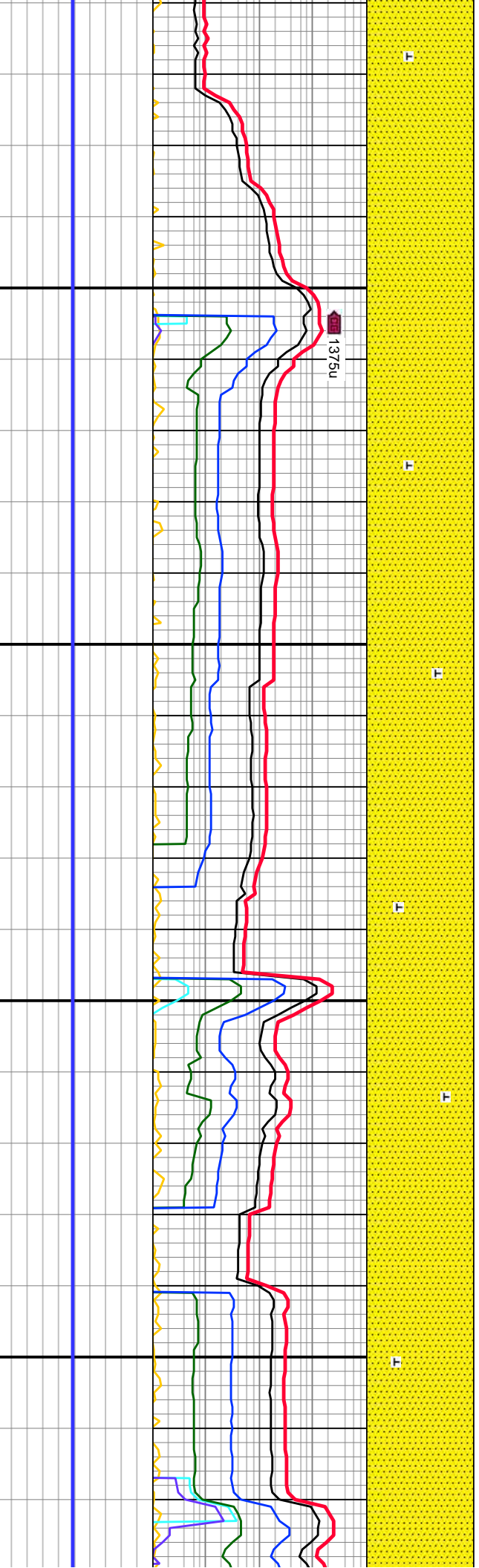
MD: 10,248'

INC: 89.42°

AZM: 87.4°

TV D: 6,510.86'

VS: 3,255.52'

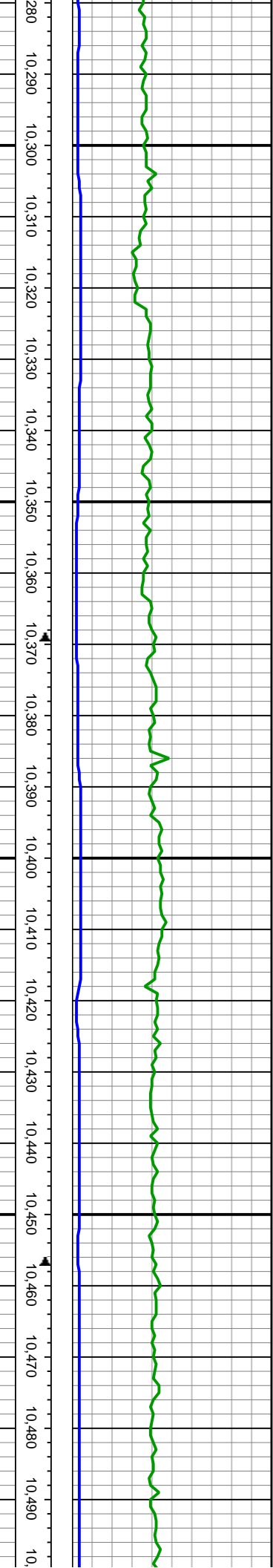


100% SS: pred dk gry, f-gr,
mod srt, sb md-sb ang,
cons, sl hd-hd, carb, sl
calc, free cal

100% SS: med gry-lt
gry-gry-mot-tr blaek, f-gr,
mod srt, sb rd,
cons-sme uncon, sl fri,
sl calc

100%
gry, f-
md-st
uncon
calc r





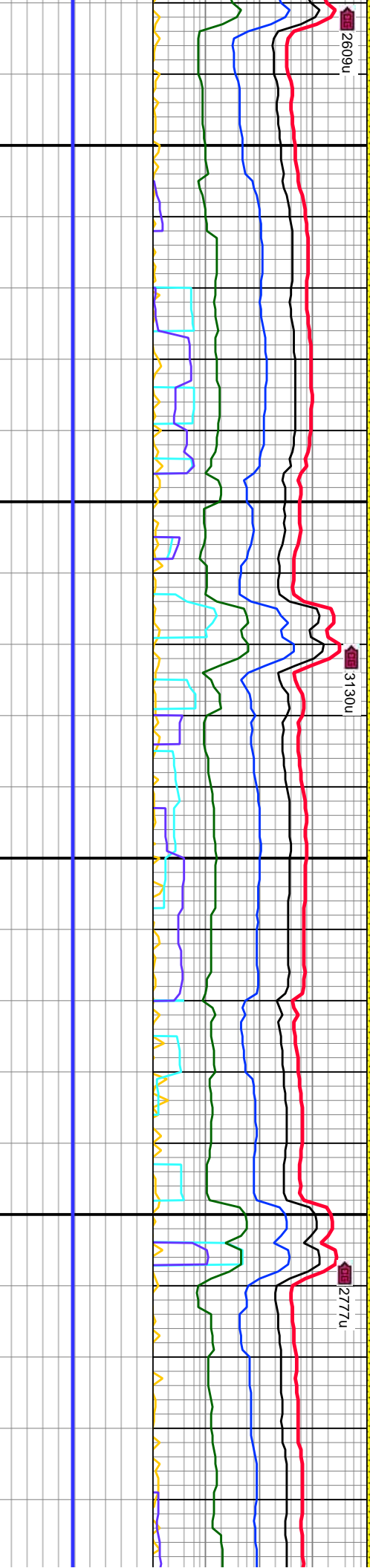
MW IN: 9.8
 VIS IN: 48
 MW OUT: 9.8
 VIS OUT: 48

MD: 10,337'
 INC: 89.45°
 AZM: 86.8°
 TVD: 6,511.74'
 VS: 3,338.36'

WOB: 6K
 RPM: 60
 SPM: 233
 PP: 3.442

MD: 10,425'
 INC: 89.95°
 AZM: 86.7°
 TVD: 6,512.2'
 VS: 3,420.07'

MD: 10,425'
 INC: 89.95°
 AZM: 86.7°
 TVD: 6,512.2'
 VS: 3,420.07'



2609u

3130u

2777u

SS: pred lt gry-med
 gr, mod srl, sb
 ang, cons-some
 s, sl hd-hd, sl carb,
 tix

100% SS: predy lt gry-med
 gry cmt wi gry-offwht-clr gr,
 sme brn, f-v f gr, sb rd-sb
 ang, pred uncons wi sme
 sll mx, com tr SH

100% SS: predy lt gry-med
 gry cmt wi gry-offwht-clr gr
 sme brn, f-v f gr, sb rd-sb
 ang, pred uncons, w sll
 calc mx, com tr SH



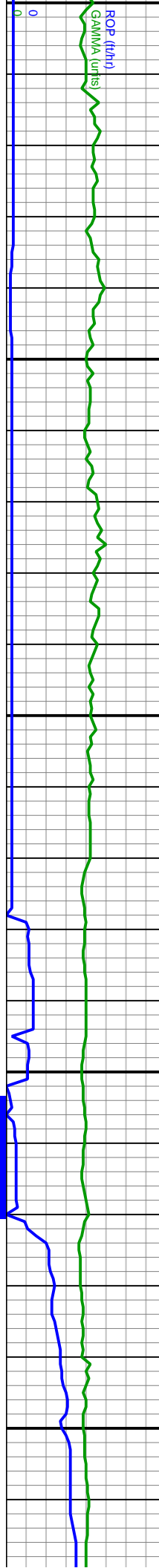
2000
2500
3000
3500
4000
4500
5000
5500
6000
6500
7000
7500
8000
8500
9000
9500
10000

12/21/2022

12/22/2022

12/23/2022

12/24/2022



JF SS

JF

0.502°
90.52°
86.0°
6,511.88'
,491.37'

MD: 10,585'
INC: 91.11°
AZM: 84.3°
TVD: 6,510.75'
VS: 3,567.52'

WOB: 4k
RPM: 50
SPM: 226
PP: 3,460

MD: 10,675'
INC: 89.17°
AZM: 84.7°
TVD: 6,510.53'
VS: 3,649.7'

MW IN: 9.95
MW OUT: 9.95
VIS OUT: 47

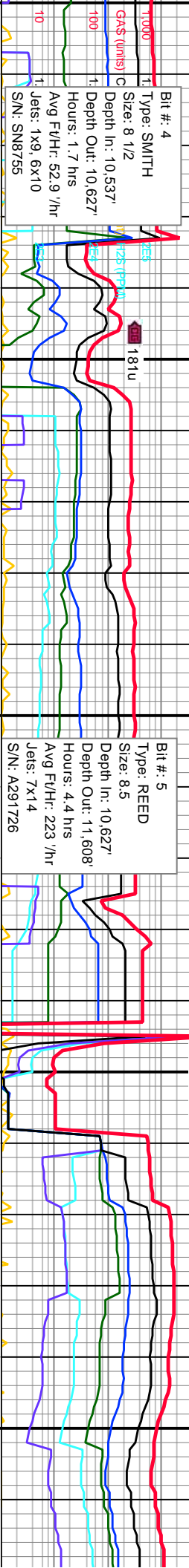
TOOH FOR TOOL MALFUNCTION

TOOH FOR TOOL MALFUNCTION GAS SYSTEM RECALIBRATION

ON GAS BUSTER

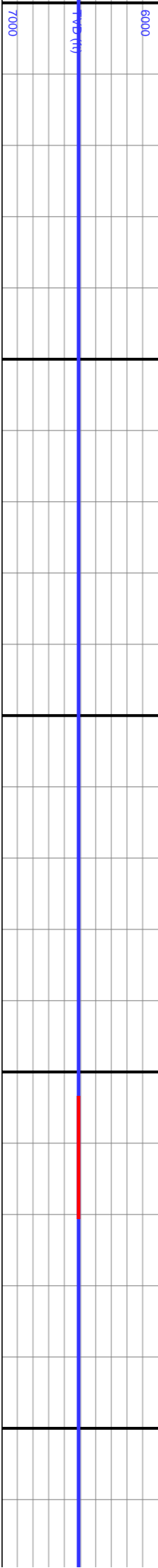
OFF GAS BUSTER

Calibration



Bit #: 4
Type: SMITH
Size: 8 1/2
Depth In: 10,537'
Depth Out: 10,627'
Hours: 1.7 hrs
Avg Ft/Hr: 52.9 /hr
Jets: 1x9, 6x10
S/N: SN8755

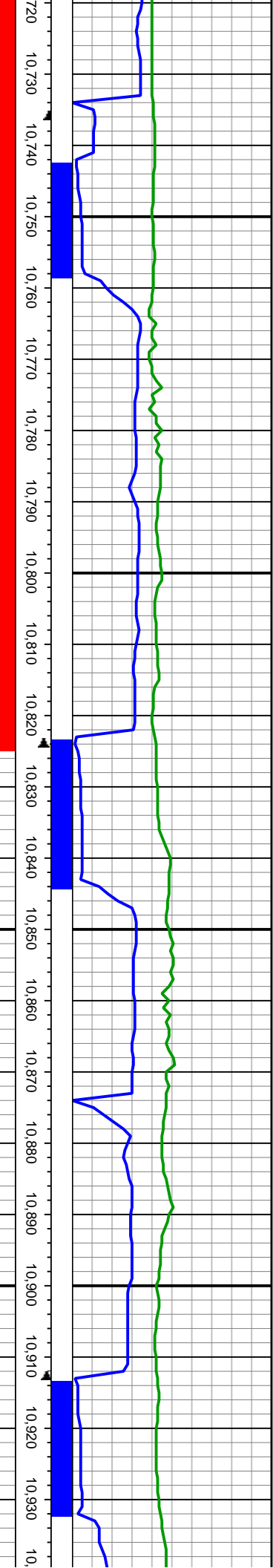
Bit #: 5
Type: REED
Size: 8.5
Depth In: 10,627'
Depth Out: 11,608'
Hours: 4.4 hrs
Avg Ft/Hr: 223 /hr
Jets: 7x14
S/N: A291726



100% SS: pred lt gry-med
gry, f-gr, mod srt, sb
rnd-sb ang, cons-some
uncons, sl hd-hd, sl carb,
calc mtz

100% SS: predy lt gry-wht,
f-gr, w srt, rnd-sb rnd,
uncons-some cons, sft-sl
hd, sl calc





MD: 10,763'
 INC: 88.82°
 AZM: 85.4°
 TVD: 6,512.07'
 VS: 3,730.37'

WOB: 39k
 RPM: 60
 SPM: 206
 PP: 4.390

SS

MD: 10,852'
 INC: 88.43°
 AZM: 87.6°
 TVD: 6,514.21'
 VS: 3,552.07'

MW IN: 9.95
 VIS IN: 47
 MW OUT: 9.9
 VIS OUT: 47

3046u

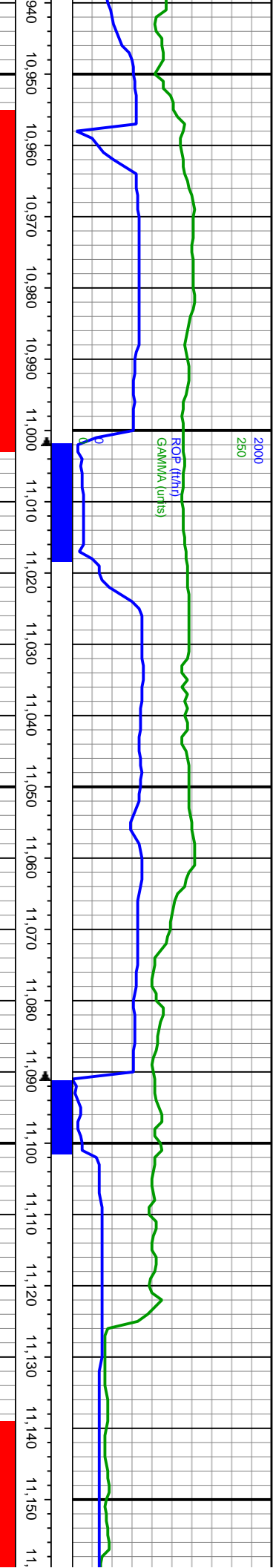
1166u

1952u

100% SS: predly lt gry-wht,
 f-gr, mod srt, sb rnd-sb
 ang, cons-sme uncon, sl
 hd, sl calc, tr pyr

100% SS: pred lt gry-med
 gry, f-gr, mod srt, sb
 rnd-sb ang, cons-some
 uncon, sl hd-hd, sl carb,
 calc mtx





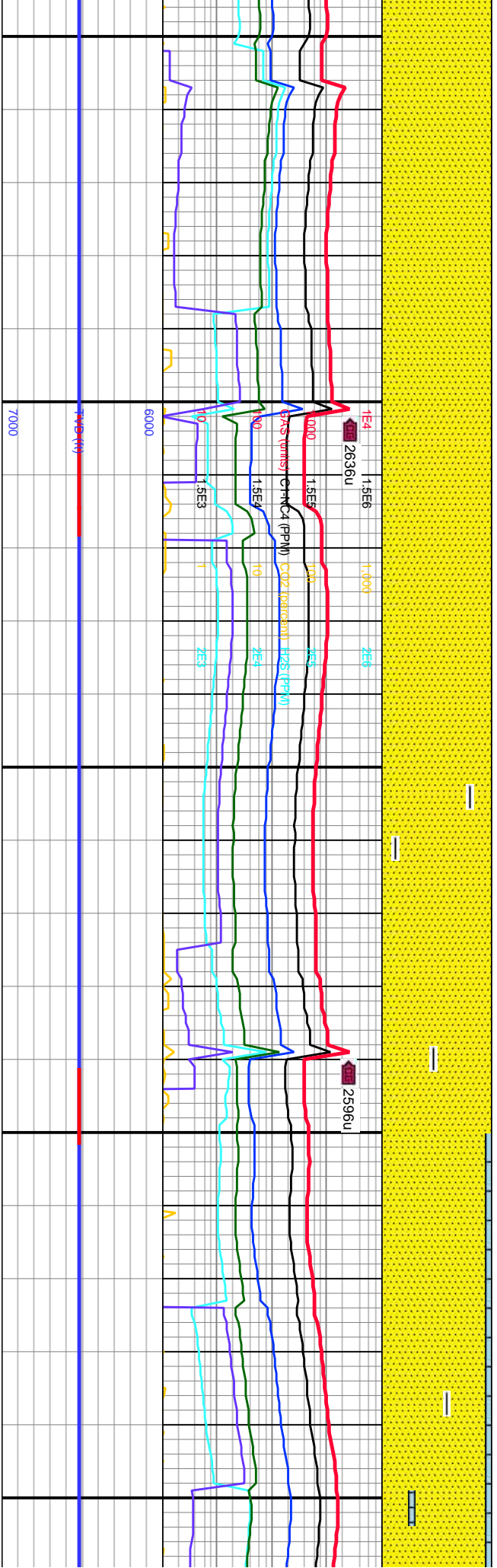
MD: 10,941'
 INC: 89.31°
 AZM: 88.9°
 TVD: 6,515.96'
 VS: 3,641'

WOB: 12K
 RPM: 0
 SPM: 206
 PP: 3.473

MD: 11,030'
 INC: 89.61°
 AZM: 91.2°
 TVD: 6,516.8'
 VS: 3,980.66'

MD: 11,118'
 INC: 90.67°
 AZM: 90.8°
 TVD: 6,516.59'
 VS: 4,064.57'

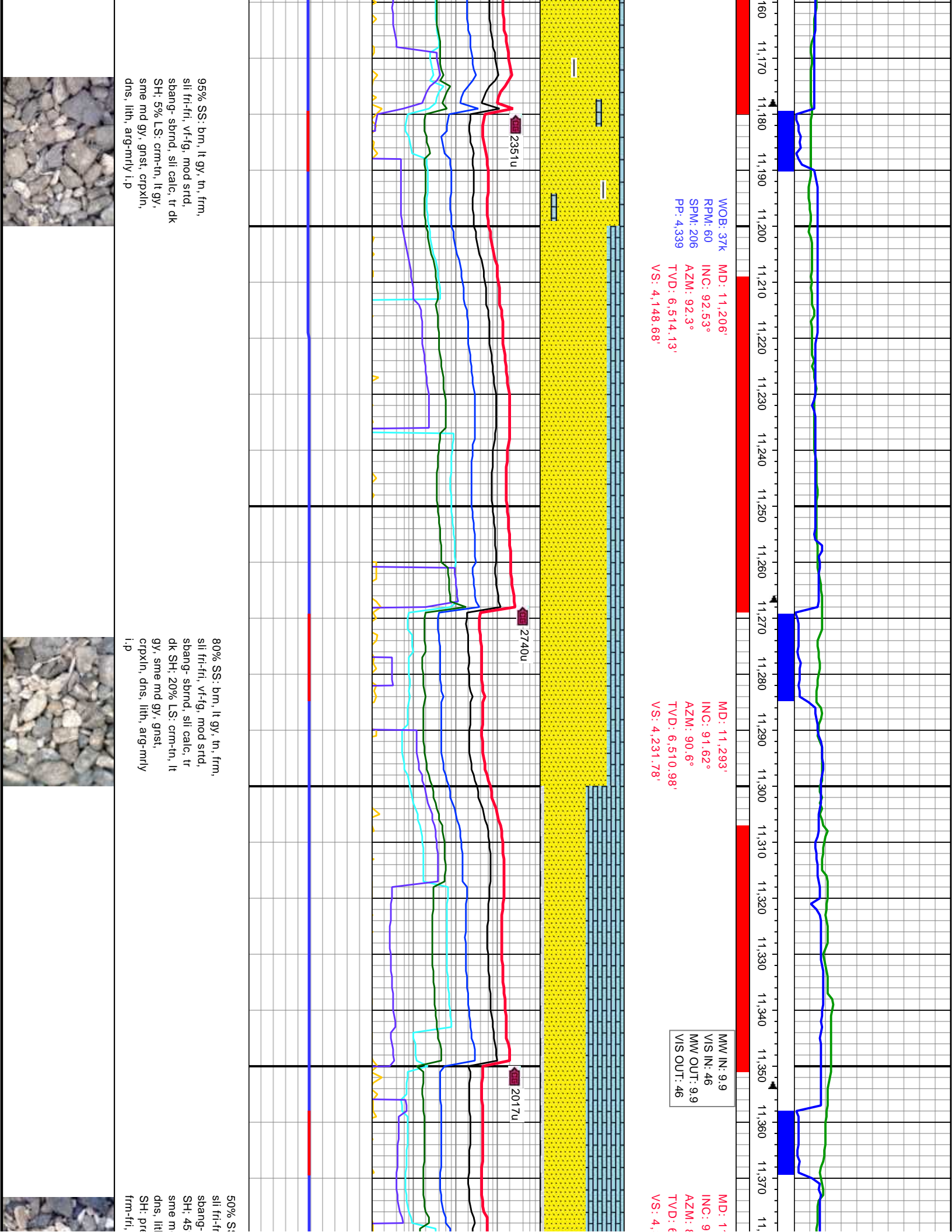
MW IN: 9.9
 VIS IN: 46
 MW OUT: 9.9
 VIS OUT: 46

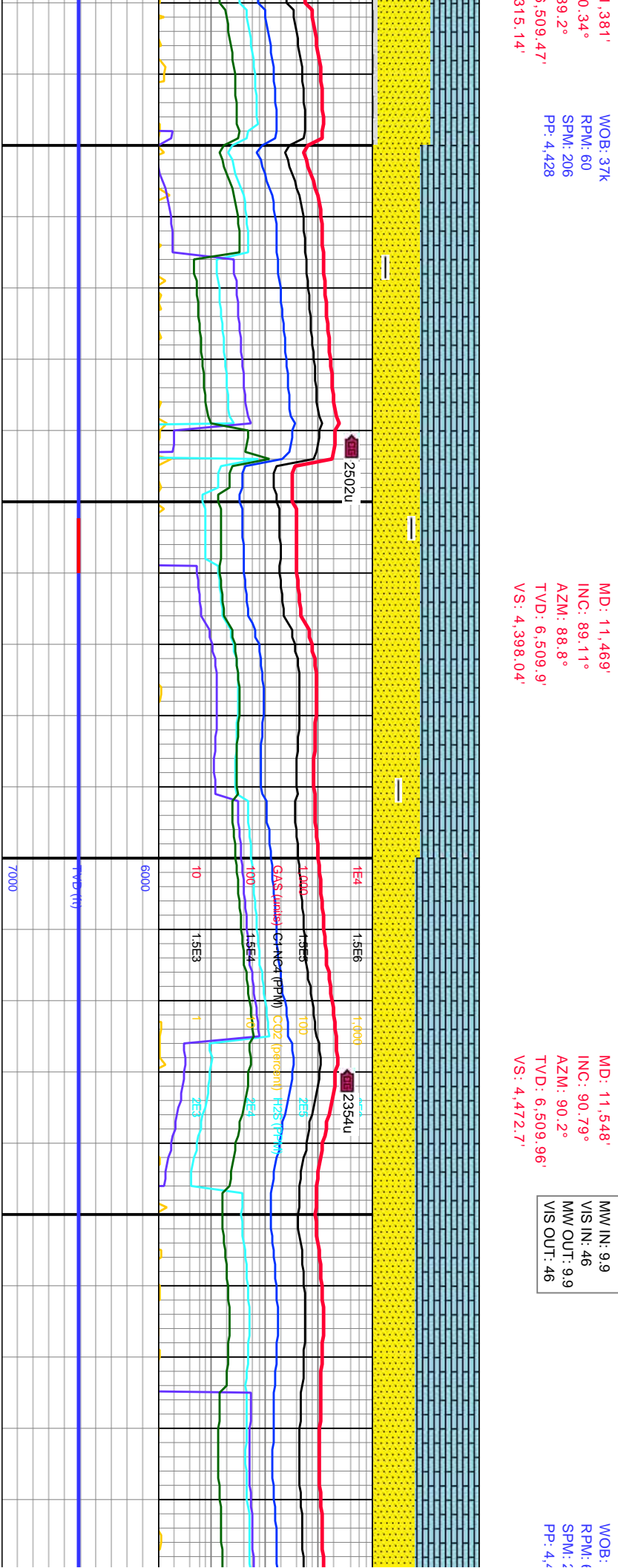
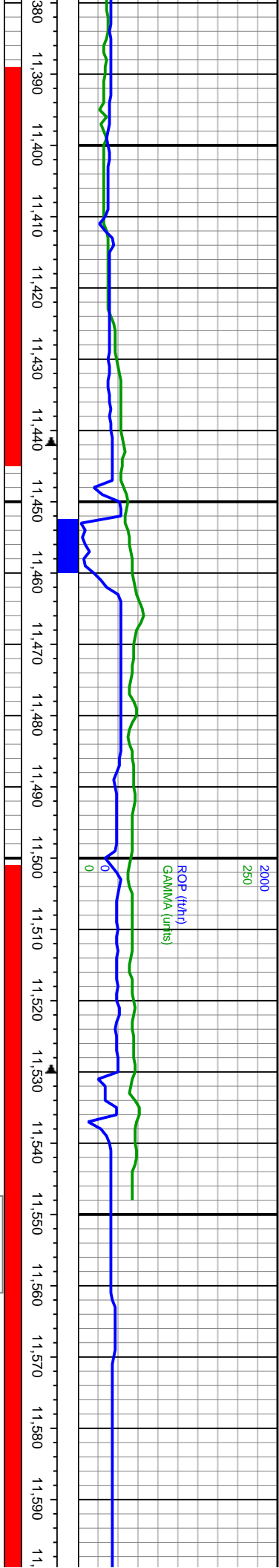


100% SS: predly lt gry-wht,
 f-gr, mod srt, sb rnd-sb
 ang, cons-sme uncons, sl
 hd, sl calc, tr pyr

100% SS: pred lt gry-med
 gry, f-gr, mod srt, sb
 rnd-sb ang, cons-some
 uncons, sl hd-hd, sl carb,
 calc mtx, tr SH







S: brn, lt gy, tn, frm,
i, vf-fig, mod strd,
sbrnd, sli calc, tr dk
% LS: crm-tn, lt gy,
d gy, gnst, crpxln,
n, arg-mrly i.p; 5%
bdy dk gy, sb ang.
aren

55% LS: crm-tn, lt gy, sme
md gy, gnst, crpxln, dns,
lilh, arg-mrly i.p; 45% SS:
brn, lt gy, tn, frm, sli fri-fri,
vf-fig, mod strd, sbang-
sbrnd, sli calc, tr dk SH:

60% LS: crm-tn, lt g
md gy, gnst, crpxln
lilh, arg-mrly i.p; 40
brn, lt gy, tn, frm, s
vf-fig, mod strd, sb
sbrnd, sli calc, tr dk



TD

11,608' MD / 6,509.14' TVD

ROP/Gamma

ROP
ft/hr 2000

GAMMA
units 250

Slide/Rotate

Depth Labels

Gas Show

600 11,610 11,620 11,630 11,640

Notes

31K Projection to bit:

MD: 11,608'

INC: 90.79°

AZM: 90.2°

TVD: 6,509.14'

VS: 4,529.64'

% Lith

End of Well

Total Gas

GAS

C1

C2

C3

IC4

NC4

CO2

H2S

Well Bore

TVD

Lithology Descriptions

ly, sme

, dns,

% SS:

li fri-fri,

ng-

SH:

Images