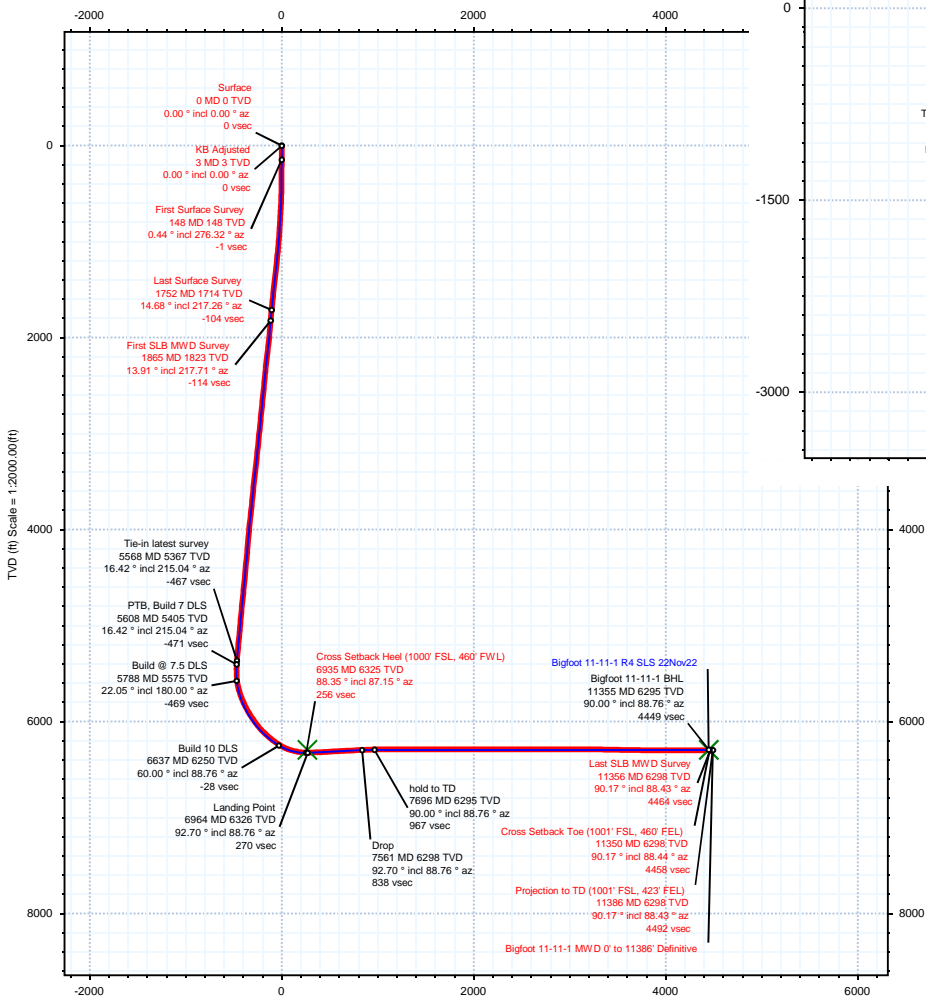
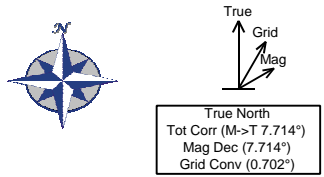
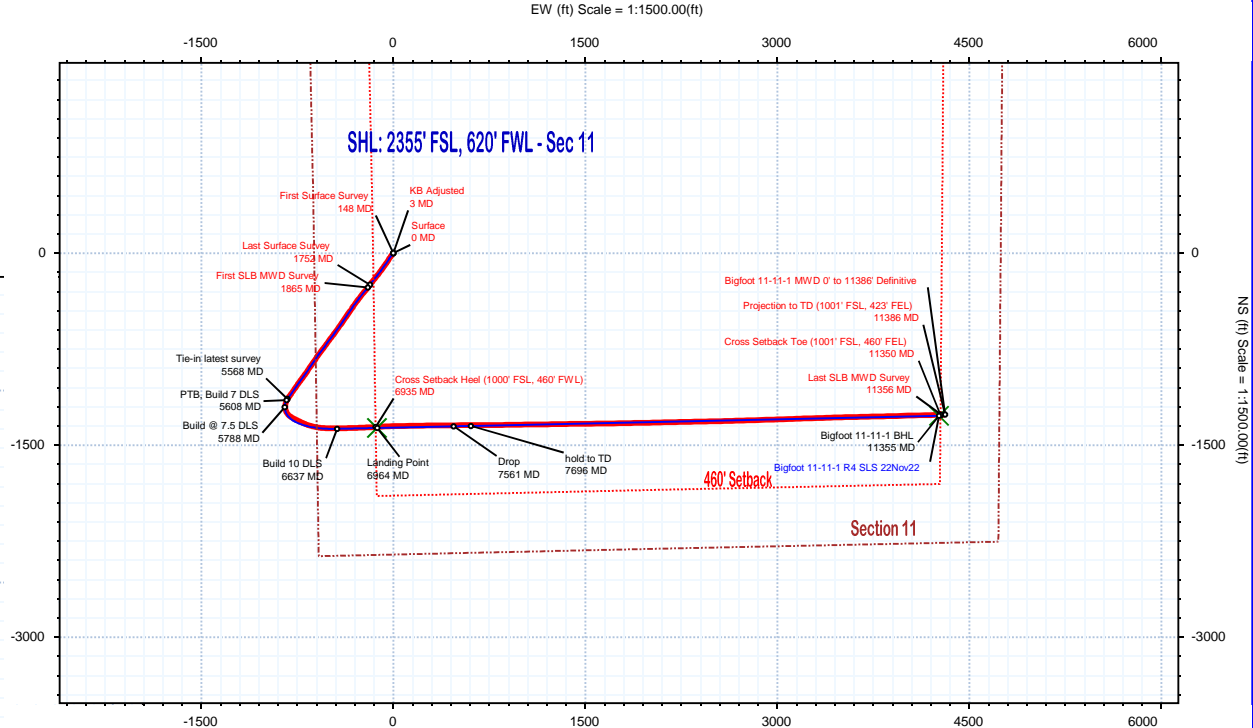


Borehole: Original Hole	Well: Bigfoot 11-11-1	Field: CO, Weld County (NAD 83 NZ) - 2019	Structure: Confluence 11-04N-63W (Bigfoot Pad)
-----------------------------------	---------------------------------	---	--

Gravity & Magnetic Parameters				Surface Location				Miscellaneous			
Model: HDGM 2022	Dip: 66.695°	Date: 20-Nov-2022	Surface Location: NAD83 Colorado State Plane, Northern Zone, US Feet	Lat: N 40 19 34.36	Northing: 1363537.25ftUS	Grid Conv: 0.7025°	Slat: Bigfoot 11-11-1	TVD Ref: KB 16.2ft(4632.2ft above MSL)			
MagDec: 7.714°	FS: 51790.441nT	Gravity FS: 999.053mgn (9.80665 Based)	Lon: W 104 24 46.19	Easting: 3303110.08ftUS	Scale Fact: 0.99995771	Plan: Bigfoot 11-11-1 MWD 0' to 11386' Definitive					



Vertical Section (ft) Azim = 106.60° Scale = 1:2000.00(ft) Origin = ON-S, OE/W



NS (ft) Scale = 1:1500.00(ft)

Target Description		Latitude		Longitude		Northing		Easting		TVD		VSec		Local Coord	
Bigfoot Pad Sec 11		N 40 19 35.33	W 104 24 48.13	1363633.75	3302958.33	4632.20	-172.39	98.36	-150.57						
Bigfoot Pad Sec 11 - 460' Setback		N 40 19 35.33	W 104 24 48.13	1363633.75	3302958.33	4632.20	-172.39	98.36	-150.57						
Bigfoot 11-11-1 LP		N 40 19 20.86	W 104 24 47.84	1362169.69	3302998.58	6295.00	267.37	-1366.15	-128.27						
Bigfoot 11-11-1 BHL		N 40 19 21.79	W 104 23 51.14	1362318.60	3307388.62	6295.00	4448.90	-1271.06	4263.47						

Critical Points								
Critical Point	MD	INCL	AZIM	TVD	VSEC	N(+)/S(-)	E(+)/W(-)	DLS
Surface	0.00	0.00	0.00	0.00	0.00	0.00	0.00	
KB Adjusted	3.20	0.00	0.00	3.20	0.00	0.00	0.00	0.00
First Surface Survey	148.20	0.44	276.32	148.20	-0.55	0.06	-0.55	0.30
Last Surface Survey	1752.20	14.68	217.26	1713.83	-104.49	-247.44	-182.80	0.75
First SLB MWD Survey	1865.00	13.91	217.71	1823.14	-114.42	-269.54	-199.75	0.69
Cross Setback Heel (1000' FSL, 460' FWL)	6934.51	88.35	87.15	6324.52	255.72	-1358.67	-138.20	9.69
Cross Setback Toe (1001' FSL, 460' FEL)	11349.67	90.17	88.44	6298.43	4457.52	-1263.22	4274.80	0.21
Last SLB MWD	11356.00	90.17	88.43	6298.41	4463.54	-1263.05	4281.13	0.21
Projection to TD (1001' FSL, 423' FEL)	11386.00	90.17	88.43	6298.32	4492.05	-1262.22	4311.12	0.00