



Confluence DJ LLC

LONG STRING POST JOB REPORT

Bigfoot #11-11-1 05-123-51762
S:11 T:4N R:63W Weld CO

CallSheet #: 84636
Proposal #: 65040



LONG STRING Post Job Report

Attention: Justin Gale | (970) 590-7709 | jgale@confluencelp.com

Confluence DJ LLC

1670 Broadway Suite 2000 | Denver, CO 80202

Dear Justin Gale,

Thank you for the opportunity to provide cementing services on this well. American Cementing strives to achieve complete customer satisfaction. If you have any questions regarding the services or data provided, please contact American Cementing at any time.

Sincerely,

Aimee Sankovich

Field Engineer I | (307) 689-0323 | aimee.sankovich@americacementing.com

Field Office 1716 E Allison Rd, Cheyenne, WY 82007
Phone: (307) 414-0049

Job Details & Summary

Geometry

Type	Function	OD (in)	ID (in)	Weight (lb/ft)	Top (ft)	Bottom (ft)	Excess (%)
Casing	Outer	9.625	8.921	36	0	1750	0
Open Hole	Outer		8.5		1750	2750	0
Open Hole	Outer		8.5		2750	11329	7
Casing	Inner	5.5	4.778	20	0	11329	0

Equipment / People

Unit Type	Unit
Field Storage Silo	FSS-449
Field Storage Silo	FSS-445
Cement Trailer Float	CTF-232
AS Cement Trailer Float	CTF-308
Cement Utility Float	CUF-163

Timing

Event	Date/Time
Call Out	11/25/2022 12:00
Depart Facility	11/25/2022 14:30
On Location	11/25/2022 15:30
Rig Up Iron	11/25/2022 16:00
Job Started	11/25/2022 18:30
Job Completed	11/25/2022 21:26
Rig Down Iron	11/25/2022 21:30
Depart Location	11/25/2022 23:30

General Job Information

Metrics	Value
Well Fluid Density	9.7 lb/gal
Well Fluid Type	OBM
Rig Circulation Vol	1200 bbls
Rig Circulation Time	2 hours
Calculated Displacement	251.96 bbls
Actual Displacement	252 bbls
Total Spacer to Surface	41 bbls

Casing Equipment

Type	Description	Qty
CENTRALIZER,5-1/2"NON-WELD	Rigid	259

Job Details

Metrics	Value
Flare Prior to Job	No
Flare Prior to Job	0 units
Flare During Job	No
Flare During Job	0 units
Flare at End of Job	No
Flare at End of Job	0 units
Well Full Prior to Job	Yes
Well Fluid Density Into Well	9.7 lb/gal
Well Fluid Density Out of Well	9.7 lb/gal

Job Details (cont.)

Metrics	Value
BHCT	240 °F
BHST	240 °F

Water Analysis

Metrics	Value	Recommended
Water Source	Upright Rig Tank	
Temperature	60 °F	50-80 °F
pH Level	7	5.5-8.5
Chlorides	0 mg/L	0-3000 mg/L
Total Alkalinity	180	0-1000
Sulfates	>400 mg/L	0-1500 mg/L
Potassium	0 mg/L	0-3000 mg/L
Iron	1 mg/L	0-300 mg/L

Circulation

Lost Circulation Experienced
No

Job Execution Information

Fluid	Product	Function	Density (lb/gal)	Yield (ft ³ /sk)	Water Rq. (gal/sk)	Water Rq. (gal/bbl)	Volume (sks)	Volume (bbl)	Designed Top (ft)
1	IntegraGuard EZ	Spacer	12.50			28.44		145.00	0
2	Primary	Primary	14.50	1.47	6.60		1425.00	373.72	2800
3	Retarded Water	Displacement	8.35			41.81		20.00	10407
4	Water with Chems	DisplacementFinal	8.34			41.91		231.00	0

Job Fluid Details

Fluid	Type	Fluid	Product	Function	Conc.	Uom
1	Spacer	IntegraGuard EZ	WEIGHTING ADDITIVE, W-11	Heavyweight	275.83	lb/bbl
1	Spacer	IntegraGuard EZ	GW-86	Viscosifier	1.00	lb/bbl
1	Spacer	IntegraGuard EZ	R-31	Retarder	0.50	lb/bbl
1	Spacer	IntegraGuard EZ	R-7C	Retarder	2.00	lb/bbl
1	Spacer	IntegraGuard EZ	Surfactant, S-801c	Surfactant	1.00	gal/bbl
2	Primary	Primary	IntegraCem P25GF	Cement	100.00	%
2	Primary	Primary	EC-2	BondEnhancer	3.00	%BWOB
2	Primary	Primary	FL-24	FluidLoss	0.30	%BWOB
2	Primary	Primary	FL-66	FluidLoss	0.30	%BWOB
2	Primary	Primary	FP-24	Defoamer	0.30	%BWOB
2	Primary	Primary	GW-86	Viscosifier	0.10	%BWOB
2	Primary	Primary	S-8	StrengthRetrogression	20.00	%BWOB
2	Primary	Primary	SR-20	Retarder	0.05	%BWOB
2	Primary	Primary	STATIC FREE	Other	0.01	lb/sk
3	Displacement	Retarded Water	BIOCIDE,BIOC11139W	Biocide	0.01	gal/bbl
3	Displacement	Retarded Water	ResCare CS-2	ClayProtection	0.08	gal/bbl
3	Displacement	Retarded Water	SR-61L	Retarder	0.10	gal/bbl
4	DisplacementFinal	Water with Chems	BIOCIDE,BIOC11139W	Biocide	0.01	gal/bbl
4	DisplacementFinal	Water with Chems	ResCare CS-2	ClayProtection	0.08	gal/bbl

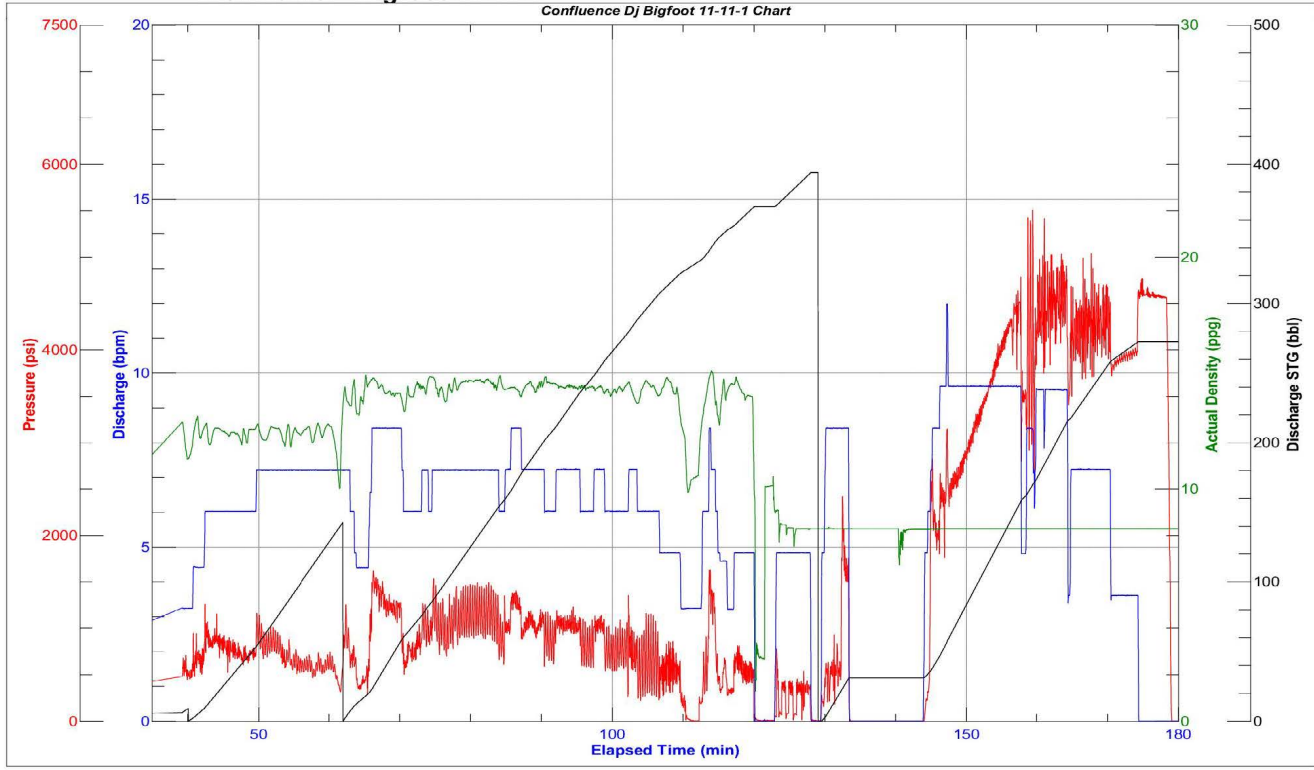
Job Logs

Line	Event	Date (MM/DD/YY)	Time (HH:MM)	Density (lb/gal)	Pump Rate (bpm)	Pump Volume (bbls)	Pipe Pressure (psi)	Comment
1	Call Out	11/25/2022	12:00					ACC gets called out Requested time OL was 1530 hrs
2	Depart Facility	11/25/2022	14:30					ACC depart facility. Cheyenne Wy
3	Arrive To Location	11/25/2022	15:30					ACC arrives to location rig currently finishing running casing
4	Rig Up	11/25/2022	16:00					ACC spots in units and rigs up equipment and iron
5	Safety Meeting	11/25/2022	18:30					ACC had a prejob safety meeting, went over job procedure
6	Pressure Test	11/25/2022	18:53				5500	Pressure test pumps and lines to 5500 psi
7	Pump IG Spacer	11/25/2022	19:05	12.5	6	145	650	Pumped 145 bbls of IntegraGuard Spacer at 6 bpm w/ 650 psi
8	Pump Primary CMT	11/25/2022	19:25	14.5	7	373.07	339	Pumped 373.07 bbls of Primary CMT (1425 sks 14.5 ppg 1.48 yld 6.6 g/sk) at 7 bpm w/ 339 psi (NOTE - Density was verified with Mud Scales)
9	Shut Down	11/25/2022	20:30					Shut Down Pumping Cmt
10	Wash Pump/ Lines	11/25/2022	20:36					Wash Pump and lines to open top
11	Drop Top Plug	11/25/2022	20:38					Drop top plug with OSR
12	Pump Disp	11/25/2022	20:40	8.33	9.5		320	Start pumping FW disp w chems at 9.5 bpm w/ 320 psi
13	Shut Down	11/25/2022	20:45	8.33		30		At 30 bbls away into disp shut down due to o ring on cmt head cap was leaking
14	Came Back On Line	11/25/2022	20:49	8.33	9.5		1005	Fixed leak on cmt head came back online at 9.5 bpm w/ 1005 psi
15	Slow Down	11/25/2022	21:13	8.33	7	210	2450	At 210 bbls away slow down to 7 bpm w/ 2450 psi, due to rig swapping returns to open top, Got Good Spacer back to surface
16	Slow Down	11/25/2022	21:17	8.33	3.5	230	2335	At 230 bbls away into disp slow down rate to 3.5 bpm w/ 2335 psi
17	Land Plug	11/25/2022	21:22	8.33	3.5	251	2500	Land plug at 251 bbls away, Final Circ pressure was 2500 psi, Bumped plug to 3044 psi
18	Check Floats	11/25/2022	21:26					Check Floats got 2 bbls back
19	Rig Down	11/25/2022	21:30					ACC starts rigging down equipment and iron
20	Depart Location	11/25/2022	23:30					ACC departs location

Pump Diagrams



JobMaster Program Version 5.01C1
Job Number: CS#84636
Customer: Confluence DJ
Well Name: Bigfoot 11-11-1



Job Start: Friday, November 25, 2022