



Scale: 5" / 100'
Measured Depth Log

Well Name Bigfoot 11-11-1-1_Horizontal Mudlog_Final

Location S11 T4N R63W, 2355' FSL 620' FWL

State Colorado

County Weld

Country USA

Rig Number Akita 522

API Number 05-123-517620000

AFE # 101061

Geographic Region Rockies

Field Platte

Spud Date 9/4/2022

Drilling Completed 11/24/2022

Surface Coordinates N 40° 19' 34.36", W 104° 24' 46.19"

Bottom Hole Coordinates N 40° 19' 21.79", W 104° 23' 51.14"

Ground Elevation 4,616'

K.B. Elevation 4,632'

Logged Interval 6,400' To 11,386'

Total Depth 11,386'

Formation NIO A

Type of Drilling Fluid OBM

Operator

Company Confluence Resources LP

Address 1001 17th Street, Suite 1250
Denver, CO, 80202



Geologist

Name Cassidy Miller, Aryn Rowe, Nathan Brown

Company Confluence Resources LP

Address 1001 17th Street, Suite 1250
Denver, CO, 80202



Other

Loggers: Steven Selby / Joshua Foust

Sample Catchers: Justin Moon / Jianwei Hou

Equipment: ML-531

Start Date: 11/23/2022

End Date: 11/24/2022

Services: Mudlogging, XRD, XRF, Geosteering

Rock Types

SHALE GRAY SANDSTONE TT TT TT MARLSTONE CHALK

Accessories

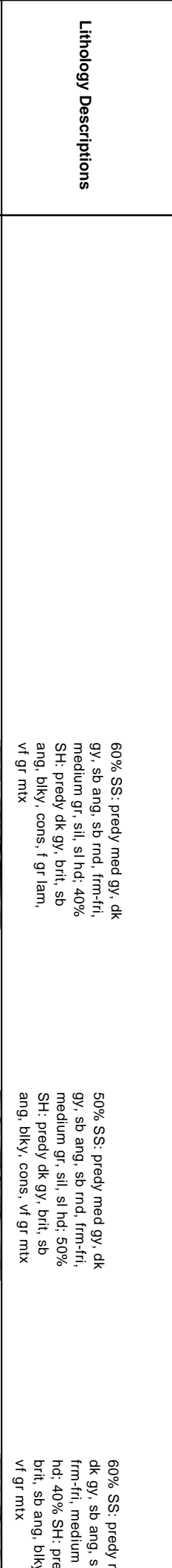
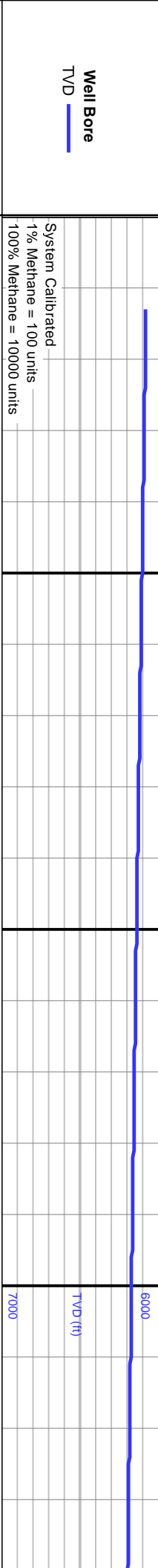
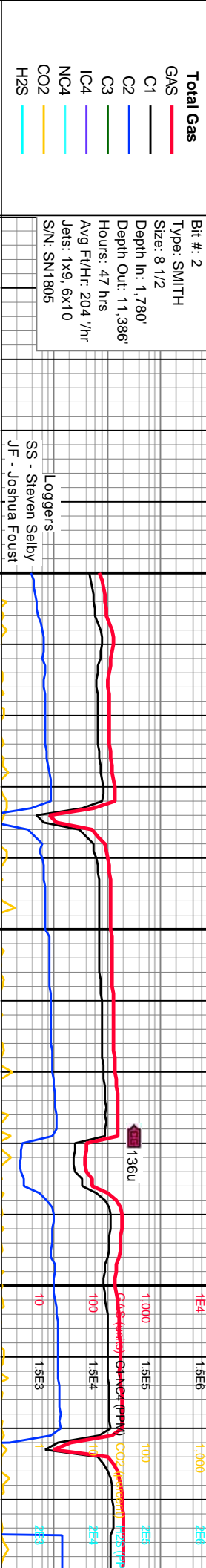
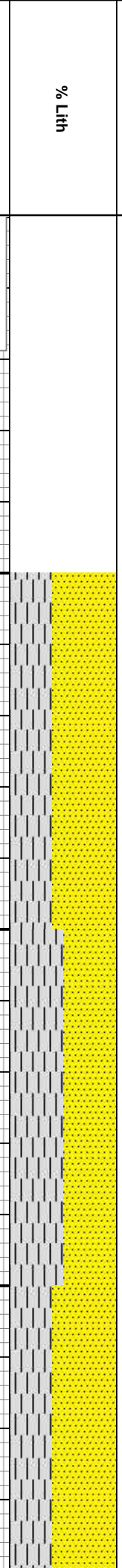
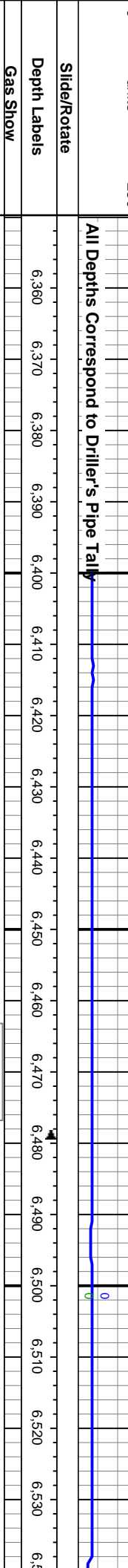
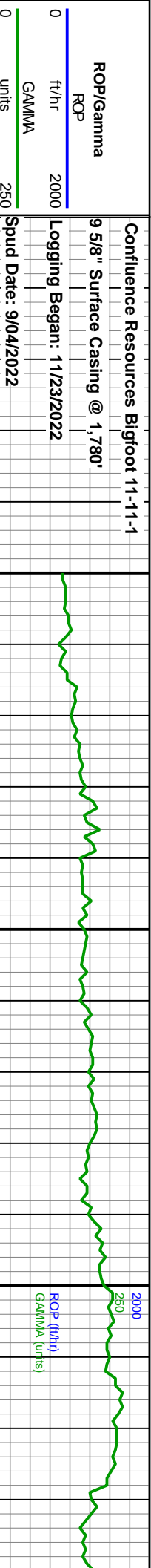
Minerals

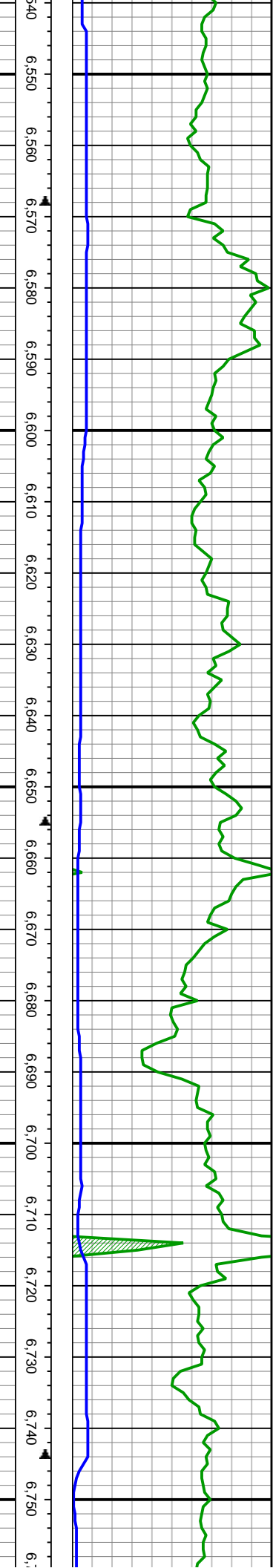
P PYRITE

Other Symbols

Engineering

CONNECTION (LEFT)
CONNECTION GAS
FAULT
MIN DEPTH





8' 1° 94.75'
 1° 8°
 6,540 6,550 6,560 6,570 6,580 6,590 6,600 6,610 6,620 6,630 6,640 6,650 6,660 6,670 6,680 6,690 6,700 6,710 6,720 6,730 6,740 6,750 6,760

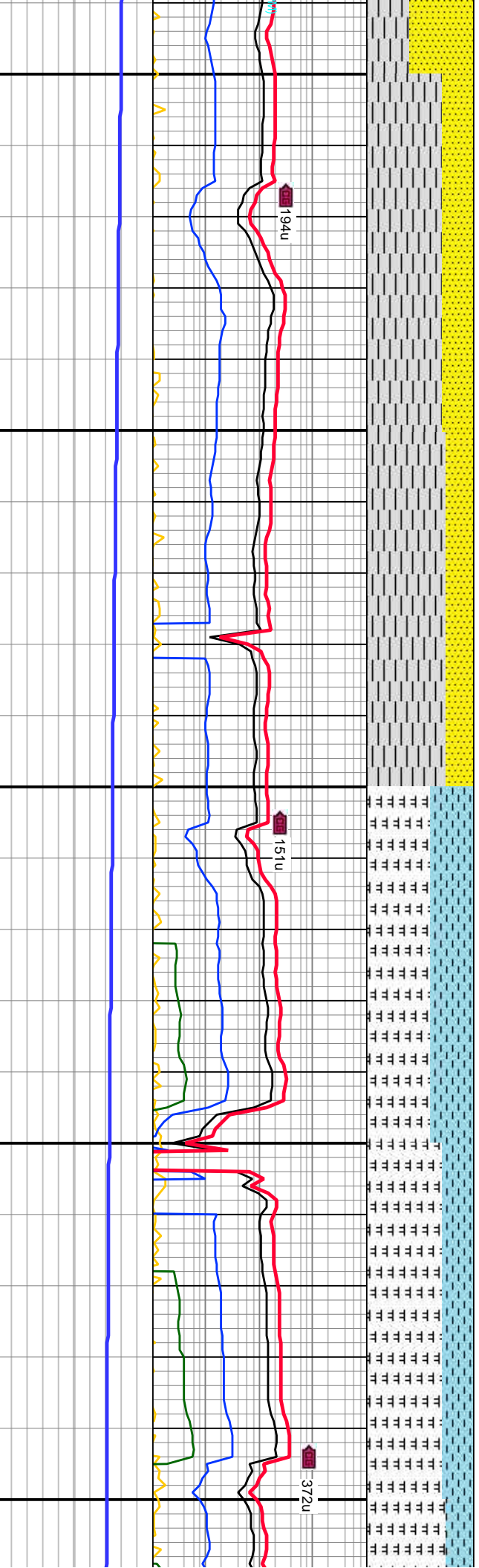
WOB: 8.9K
 RPM: 25
 SPM: 226
 PP: 3.135

MD: 6,625'
 INC: 58.64°
 AZM: 88.4°
 TVD: 6,243.17'
 VS: -23.95'

6,658' MD / 6,260' TVD
Nio A Chalk
 SS

6,712' MD / 6,281' TVD
Nio A Marl

MD: 6,714'
 INC: 68.85°
 AZM: 88.7°
 TVD: 6,282.49'
 VS: 51.85'



med gy,
 b rnd,
 sil, sl
 sdy dk gy,
 /, cons,

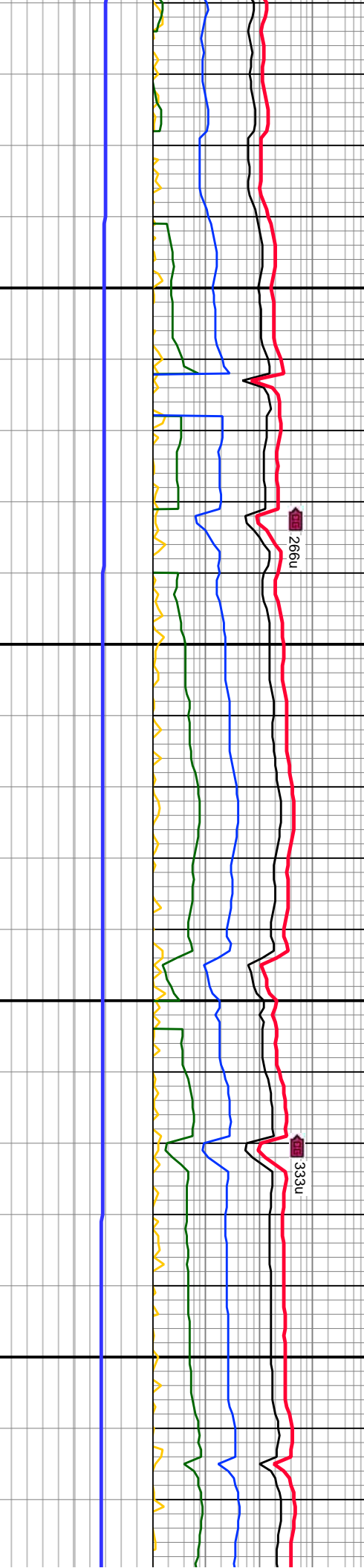
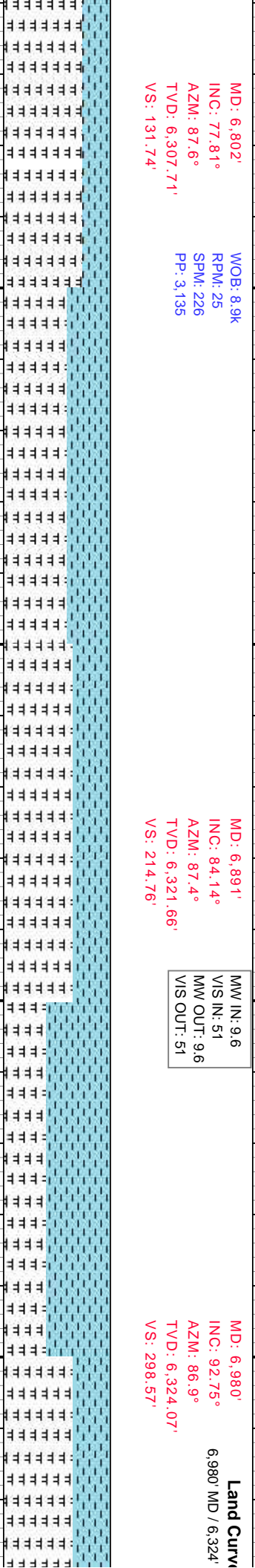
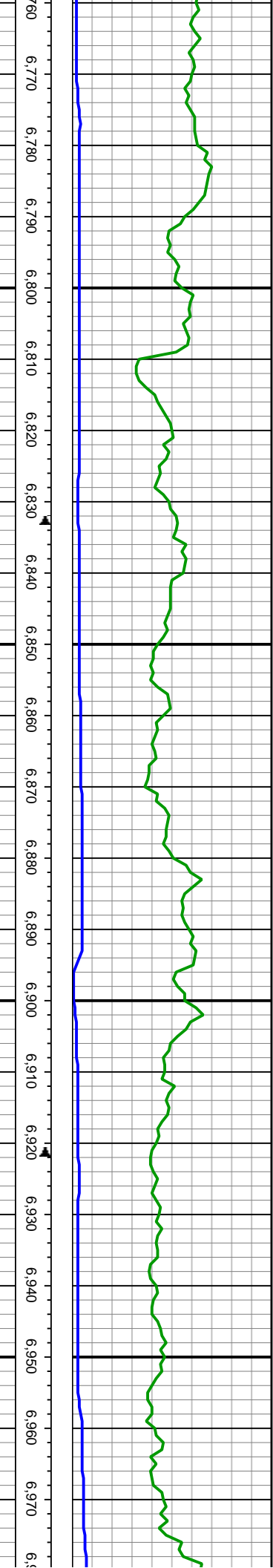
70% SH: predy dk gy, brit,
 sb ang, blk, cons, carb, vf
 gr mtx: 30% SS: predy med
 gy, dk gy, sb ang, sb rnd,
 frm-fri, medium gr, sil, sl
 hd

75% SH: predy dk gy, brit,
 sb ang, blk, cons, f gr
 lam, carb, vf gr mtx: 25%
 SS: predy med gy, dk gy,
 sb ang, sb rnd, frm-fri,
 medium gr, sil, sl hd

60% MRLST: dk gry, med gry,
 mot wht, frm-sl fri, blk-sb
 ang, sb wxy istr, calc: 40%
 CHK: predy lt gry, sme
 offwht, sl fri, rthy tex, sb
 blk, arg, f rmnica, calc

70% MRLST: predy dk gry,
 com mot wht, frm, blk-sb
 ang, ply, sb wxy istr, calc;
 30% CHK: predy lt brn, lt
 gry-gry mot, frm-fri, rthy tex,
 sb blk, arg, sme foram,
 carb





75% MRLST: predy dk gry,
 com mot wht, frm,
 blkly-ang; sb plty, sb wxy
 lstr, calc; 25% CHK: predy
 lt brn, lt gry-gry mot, frm-fri,
 rthy tex, sb blkly, arg, sme
 foram, carb, tr free chk
 frags

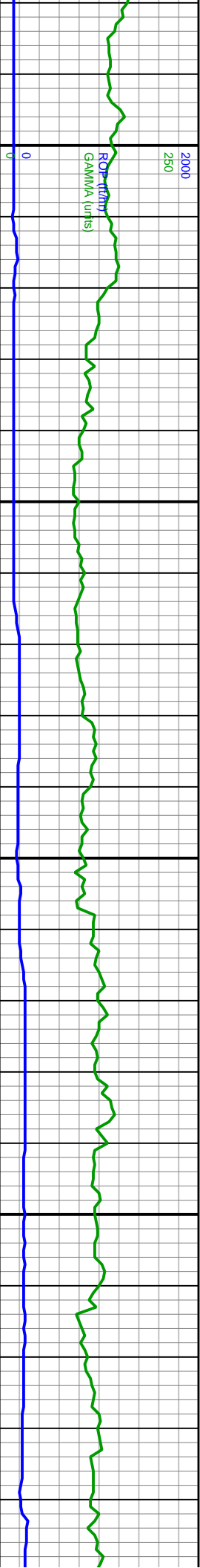
60% MRLST: predy dk gry,
 com mot wht, frm, blkly-sb
 ang, plty, sb wxy lstr, calc;
 40% CHK: predy lt brn, lt
 gry-gry mot, frm-fri, rthy tex,
 sb blkly, arg, sme foram,
 carb

65% MRLST: predy dk gry,
 com mot wht, frm-fri, blkly-
 sb ang, sb wxy lstr, calc;
 35% CHK: predy lt brn, lt
 gry-gry mot, frm-fri, rthy tex,
 sb blkly, arg, carb

60% CHK: predy lt brn, lt
 gry-gry mot, sme ofwht,
 frm-fri, sb blkly, arg, carb, tr
 free chk frags; 40% MRLST:
 predy dk gry, occ dk-lt brn,
 com mot wht, frm, blkly-sb
 ang, sb plty, calc

65% M
 com m
 ang, pl
 35% C
 gry-gry
 sb blkly
 carb





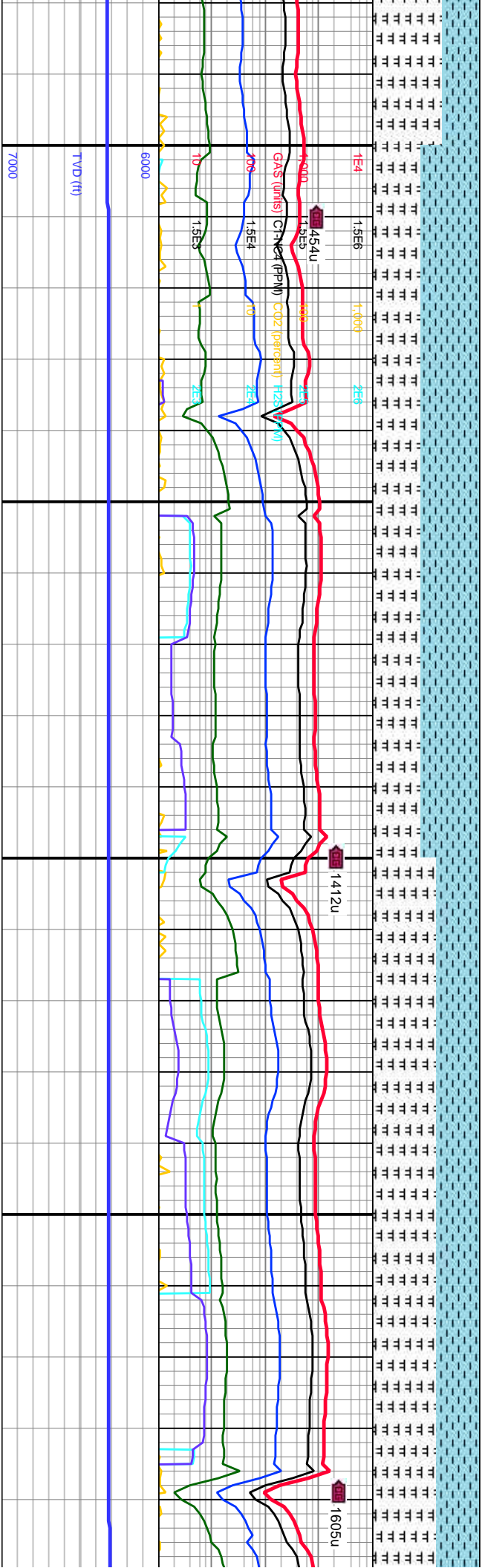
WOB: 16K
 RPM: 25
 SPM: 237
 PP: 3.619

MD: 7.069'
 INC: 92.74°
 AZM: 88.2°
 TVD: 6,319.81'
 VS: 382.58'

MW IN: 9.6
 MW OUT: 5.1
 VIS OUT: 5.1

MD: 7.158'
 INC: 92.87°
 AZM: 89.1°
 TVD: 6,315.44'
 VS: 467.13'

WOB: 16K
 RPM: 25
 SPM: 237
 PP: 3.619

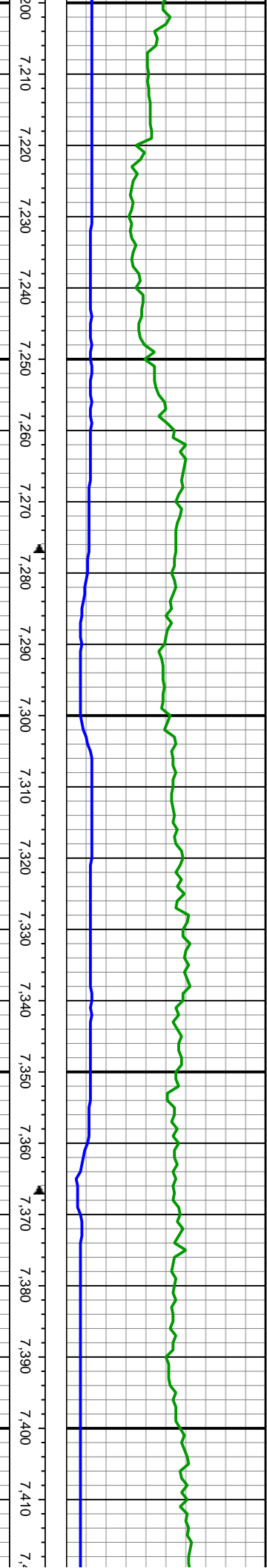


RLST: predy dk gry,
 of wht, frm, blkY- sb
 ry, sb wxy lstr, calc;
 HK: predy lt brn, lt
 mot, frm-fri, rthy tex,
 , arg, sme foram,

55% CHK: predy lt brn, lt
 gry-gry mot, sme offwht,
 frm-fri, sb blkY, arg, carb, tr
 free chk frags: 45% MRLST:
 predy dk gry, occ dk-lt brn,
 com mot wht, frm, blkY-sb
 ang, sb plty, calc

60% MRLST: predy dk gry,
 com mot wht, frm-fri, blkY-
 sb ang, sb wxy lstr, calc;
 40% CHK: predy lt brn, lt
 gry-gry mot, frm-fri, rthy tex,
 sb blkY, arg, carb





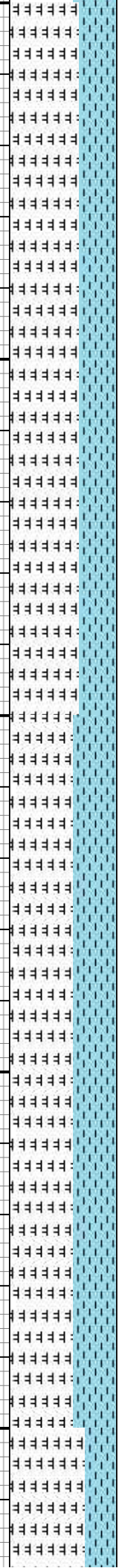
MD: 7.246'
 INC: 92.92°
 AZM: 88.8°
 TVD: 6,311'
 VS: 550.88'

MW IN: 9.65
 VIS IN: 52
 MW OUT: 9.65
 VIS OUT: 52

MD: 7.335'
 INC: 92.84°
 AZM: 89.5°
 TVD: 6,306.53'
 VS: 635.68'

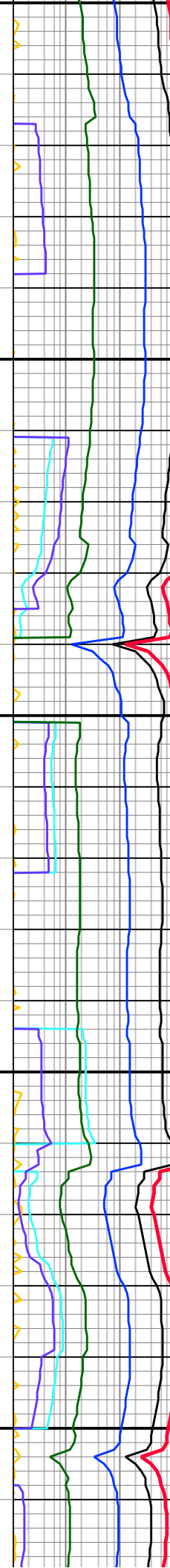
WOB: 10K
 RPM: 90
 SPM: 226
 PP: 3.318

MD
 INC
 AZM
 TVE
 VS:



1603u

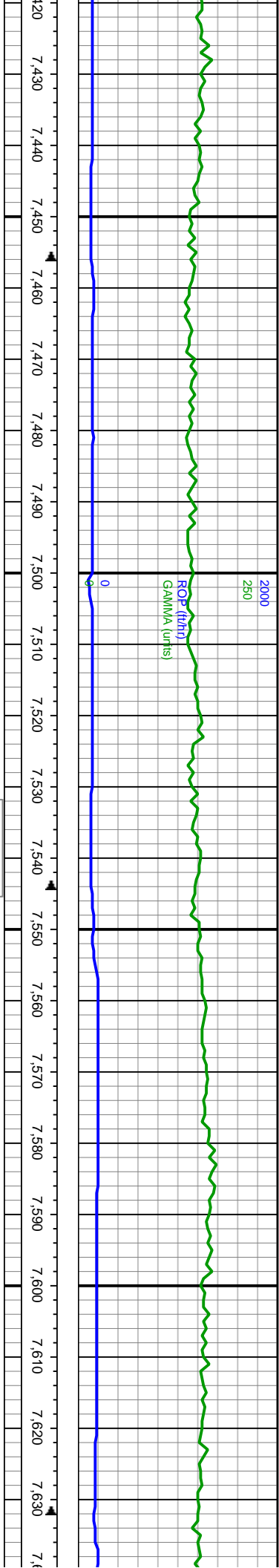
1988u



65% MRLST: predy dk gry,
 com mot wht, frm, blk-y- sb
 ang, plty, sb wxy lstr, calc;
 35% CHK: predy lt brn, lt
 gry-gry mot, frm-fri, rthy tex,
 sb blk-y, arg, sme foram,
 carb

65% MRLST: predy dk gry,
 com mot wht, frm-fri, blk-y-
 sb ang, sb wxy lstr, calc;
 35% CHK: predy lt brn, lt
 gry-gry mot, frm-fri, rthy tex,
 sb blk-y, arg, carb





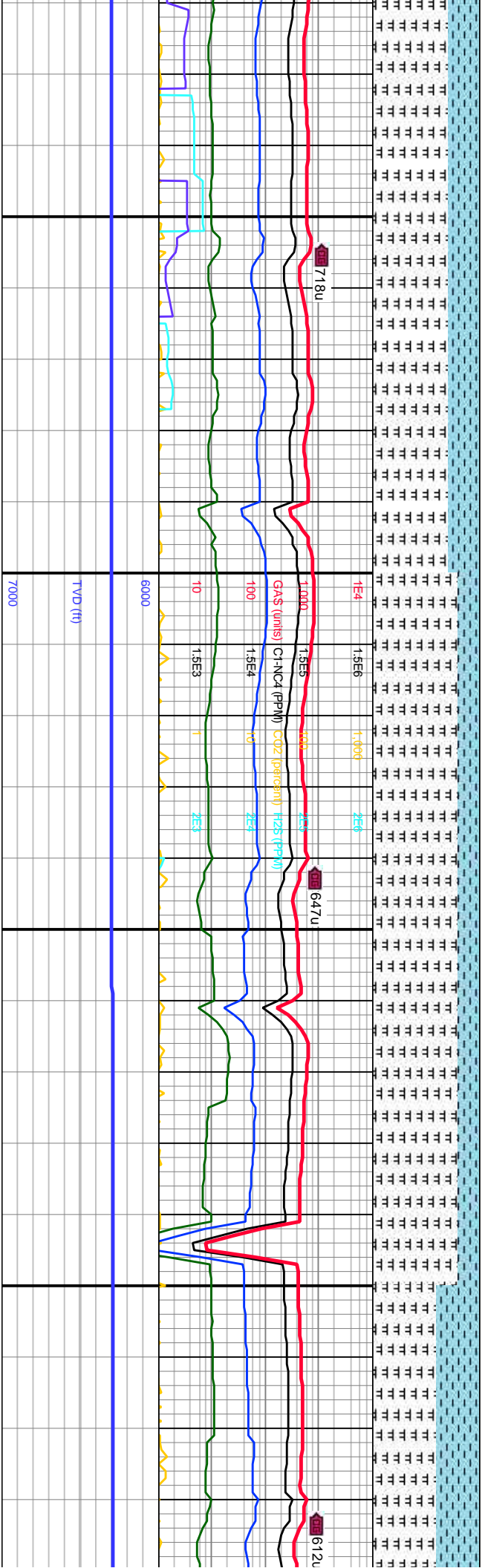
7,424'
 : 92.78°
 A: 89.4°
 D: 6,302.17'
 720.63'

MD: 7,513'
 INC: 92.9°
 AZM: 89.3°
 TVD: 6,297.75'
 VS: 805.54'

MW IN: 9.7
 VIS IN: 49
 MW OUT: 9.7
 VIS OUT: 49

MD: 7,601'
 INC: 92.88°
 AZM: 89.6°
 TVD: 6,293.31'
 VS: 889.53'

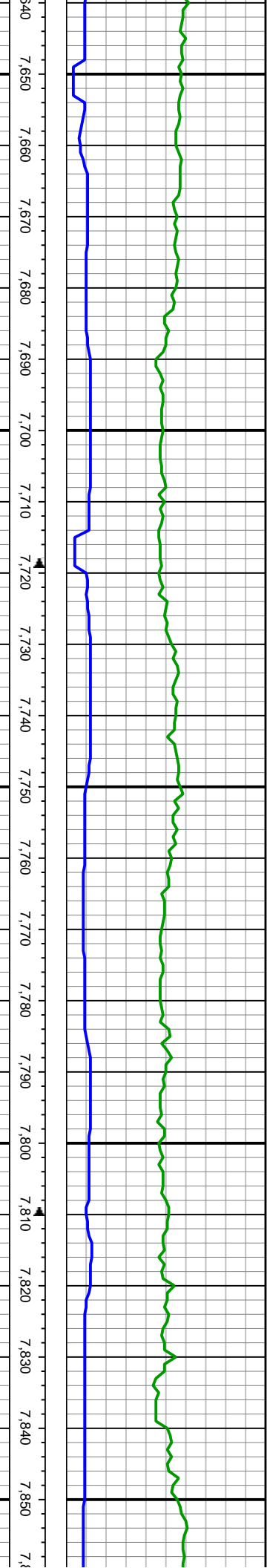
WOB: 15k
 RPM: 100
 SPM: 226
 PP: 3.369



70% MRLST: predy dk gry,
 com mot wht, frm, blkly-sb
 ang, pty, sb wxy lst, calc;
 30% CHK: predy lt brn, lt
 gry-gry mot, frm-fri, rthy tex,
 sb blkly, arg, sme foram,
 carb

80% MRLST: predy dk gry,
 com mot wht, frm, blkly-sb
 ang, pty, sb wxy lst, calc;
 20% CHK: predy lt brn, lt
 gry-gry mot, frm-fri, rthy tex,
 sb blkly, arg, sme foram,
 carb





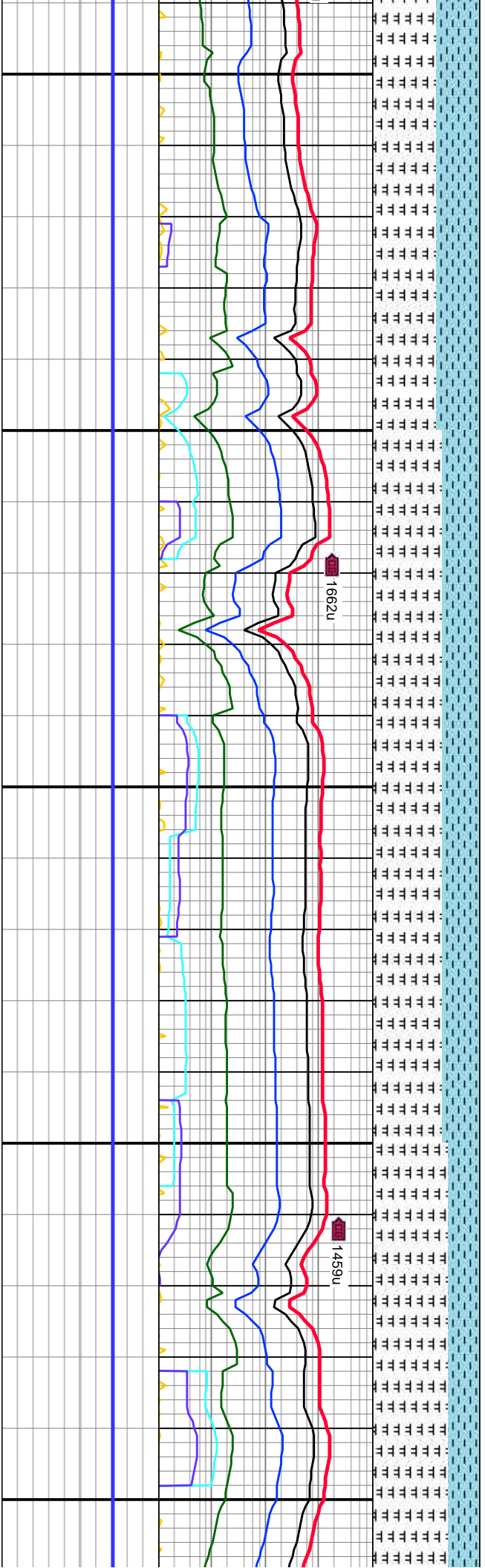
MD: 7,689'
 INC: 90.88°
 AZM: 89.7°
 TVD: 6,290.43'
 VS: 973.66'

MW IN: 9.7
 MW OUT: 9.7
 VIS OUT: 51

MD: 7,778'
 INC: 90.33°
 AZM: 89.7°
 TVD: 6,289.49'
 VS: 1,058.81'

WOB: 15K
 RPM: 100
 SPM: 226
 PP: 3.492

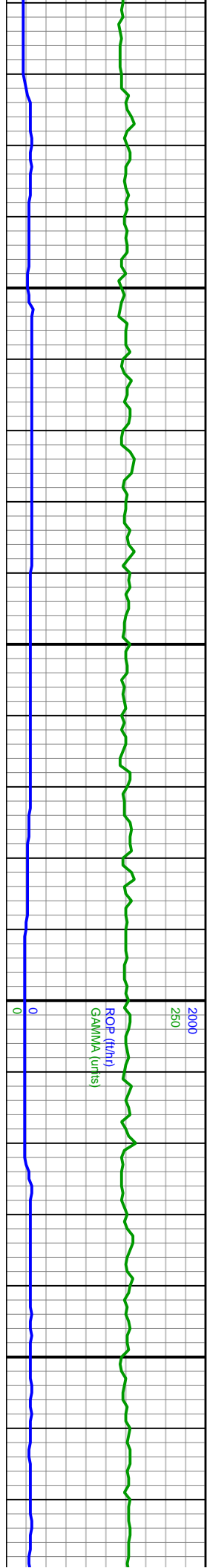
MC
 INI
 AZ
 TV
 VS



60% MRLST: predy dk gry,
 com mot wht, frm-fri, blk-
 sb ang, sb wxy lstr, calc;
 40% CHK: predy lt brn, lt
 gry-gry mot, frm-fri, rthy tex,
 sb blk, arg, carb

65% MRLST: predy dk gry,
 com mot wht, frm-fri, blk-
 sb ang, sb wxy lstr, calc;
 35% CHK: predy lt brn, lt
 gry-gry mot, frm-fri, rthy tex,
 sb blk, arg, carb





7860 7870 7880 7890 7900 7910 7920 7930 7940 7950 7960 7970 7980 7990 8000 8010 8020 8030 8040 8050 8060 8070 8080

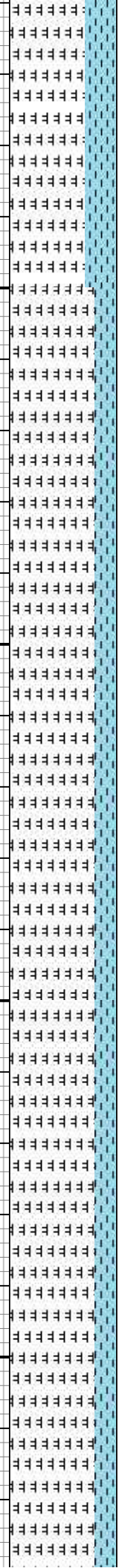
JF
 MD: 7,865'
 INC: 90.02°
 AZM: 89.5°
 TVD: 6,289.22'
 VS: 1,142'

MD: 7,953'
 INC: 90.33°
 AZM: 89.3°
 TVD: 6,288.95'
 VS: 1,226.05'

MD: 8,042'
 INC: 90.13°
 AZM: 88.8°
 TVD: 6,288.59'
 VS: 1,310.91'

MW IN: 9.7
 MW OUT: 9.7
 VIS OUT: 51

WOB: 10k
 RPM: 100
 SPM: 226
 PP: 3.427



667U

1104U

372U

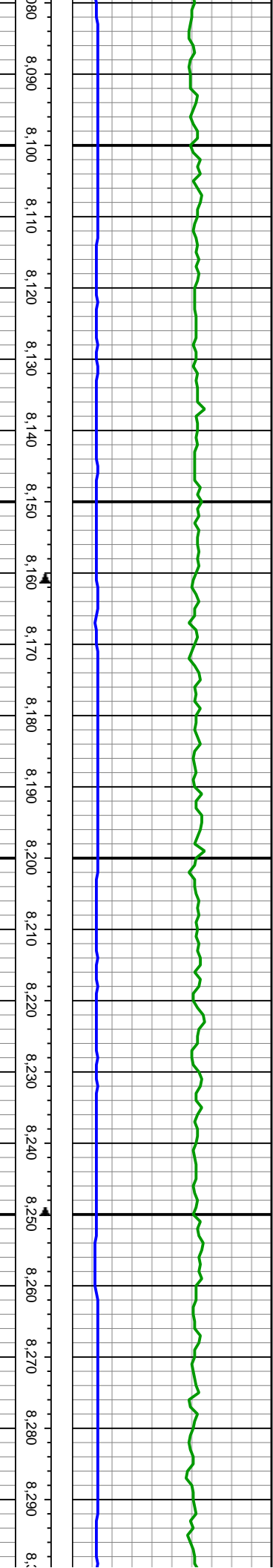


70% MRLST: predy med
 gry, com mot wht, frm,
 blkly- sb ang, sb wxy lstr,
 arg, calc: 30% CHK: predy
 lt brn, lt gry-gry mot, fri,
 rthy tex, sb blkly, arg, calc

80% MRLST: predy dk gry,
 med gry, com mot wht, frm,
 blkly- sb ang, sb wxy lstr, arg,
 vit, calc: 20% CHK: predy lt
 brn, lt gry-gry mot, fri, rthy tex,
 sb blkly, arg, calc

80% MRLST: med gr
 blkly- s
 CHK: r
 mot, fri
 calc





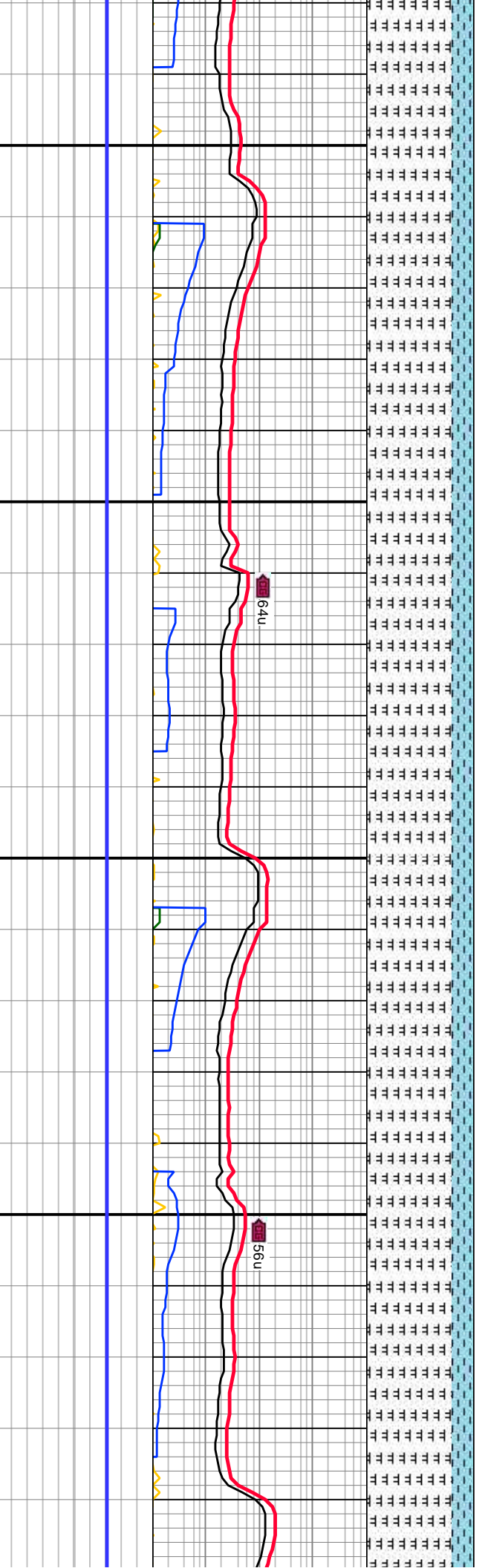
MW IN: 9.7
 MW OUT: 9.7
 VIS OUT: 51

MD: 8,131'
 INC: 89.79°
 AZM: 89.4°
 TVD: 6,288.65'
 VS: 1,395.8'

WOB: 13K
 RPM: 100
 SPM: 226
 PP: 3.554

MD: 8,220'
 INC: 89.63°
 AZM: 89.2°
 TVD: 6,289.1'
 VS: 1,480.77'

MW IN: 9.7
 MW OUT: 9.7
 VIS OUT: 51

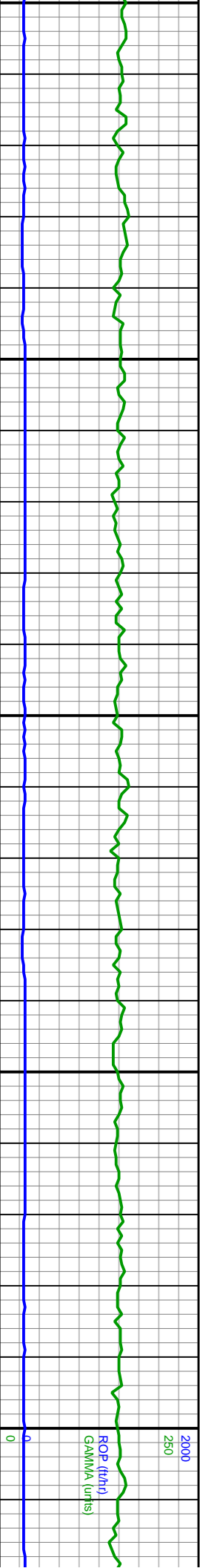


RLST: predy dk gry,
 y, com mot wht, frm,
 b ang, arg, calc: 20%
 predy lt brn, lt gry-gry
 , rthy tex, sb blk, arg.

80% MRLST: predy dk gry,
 med gry, com mot wht, frm,
 blk, sb ang, vt, arg, calc:
 20% CHK: predy lt brn, lt
 gry-gry mot, fri, rthy tex, sb
 blk, arg, calc

80% MRLST: predy lt gry,
 med gry, com mot wht, frm,
 blk, sb ang, arg, calc: 20%
 CHK: predy, lt gry-gry mot,
 fri, rthy tex, sb blk, arg,
 calc



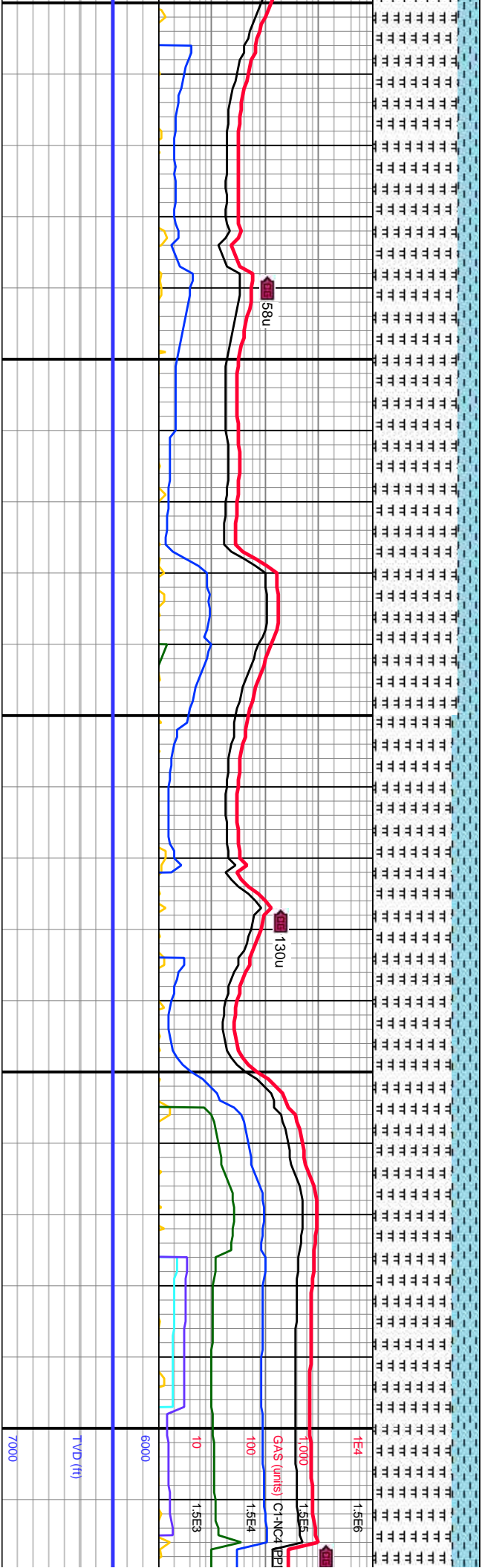


MD: 8,309' INC: 90.1° AZM: 89.2° TVD: 6,289.31' VS: 1,565.71'

MD: 8,396' INC: 89.71° AZM: 89.1° TVD: 6,289.45' VS: 1,648.71'

MD: 8,485' INC: 90.05° AZM: 89.3° TVD: 6,289.64' VS: 1,733.63'

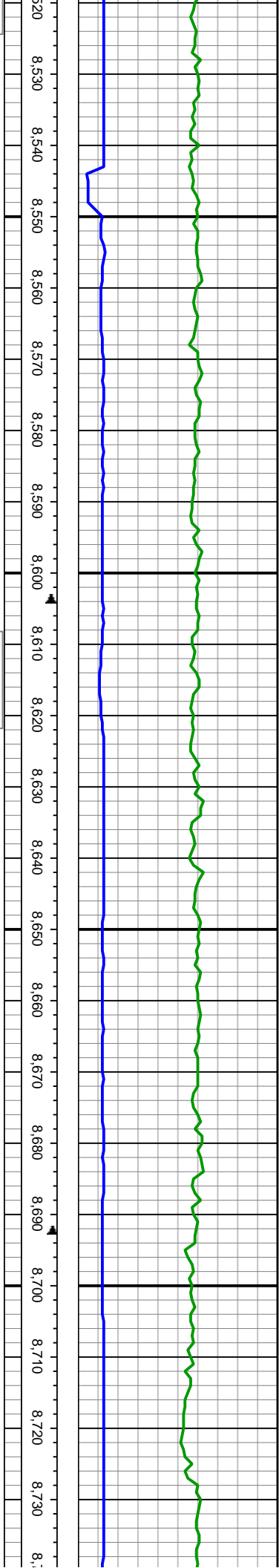
MW IN: 9' VIS IN: 53' MW OUT: VIS OUT:



80% MRLST: predy lt gry, med gry, com mot wht, frm, blk, sb ang, vit, arg, calc; 20% CHK: predy, lt gry-gry mot, fri, rthy tex, sb blk, arg, calc

75% MRLST: predy lt gry, med gry, com mot wht, frm, blk, sb ang, vit, arg, calc; 25% CHK: predy, lt gry-gry mot, fri, rthy tex, sb blk, arg, calc



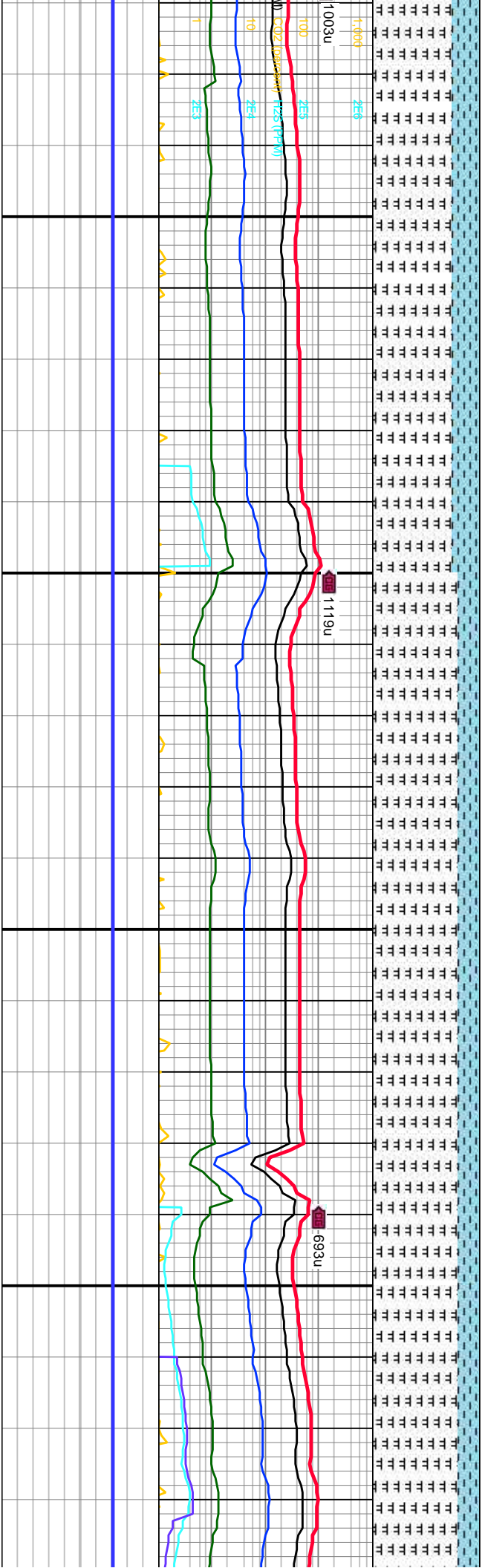


MD: 8,574'
 INC: 89.99°
 AZM: 89.1°
 TVD: 6,289.61'
 VS: 1,818.58'

WOB: 20.6k
 RPM: 100
 SPM: 226
 PP: 3.581

MW IN: 9.7
 VIS IN: 53
 MW OUT: 9.7
 VIS OUT: 53

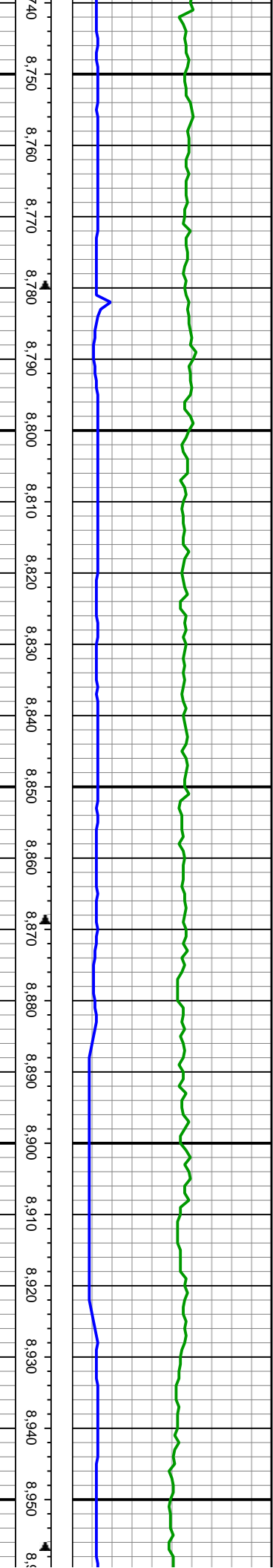
MD: 8,662'
 INC: 89.95°
 AZM: 89.1°
 TVD: 6,289.66'
 VS: 1,902.52'



75% MRLST: predy dk gry,
 med gry, com mot wht, frm,
 blk, sb ang, vlt, arg, calc;
 25% CHK: predy, lt gry-gry
 mot, fri, rthy tex, sb blk,
 arg, calc

80% MRLST: predy dk gry,
 lt gry, com mot wht, frm,
 blk, sb ang, vlt, arg, calc;
 20% CHK: predy, lt gry-gry
 mot, fri, rthy tex, sb blk,
 arg, calc



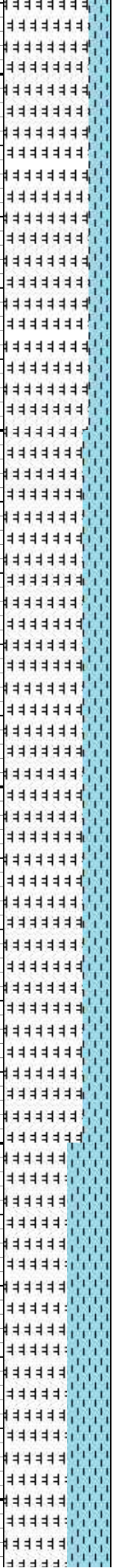


MD: 8,750'
 INC: 89.79°
 AZM: 89.1°
 TVD: 6,289.86'
 VS: 1,986.45'

WOB: 15.6K
 RPM: 100
 SPM: 225
 PP: 3.651

MD: 8,838'
 INC: 89.62°
 AZM: 89.4°
 TVD: 6,290.31'
 VS: 2,070.45'

MD: 8,927'
 INC: 90.14°
 AZM: 88.7°
 TVD: 6,290.5'
 VS: 2,155.31'



807u

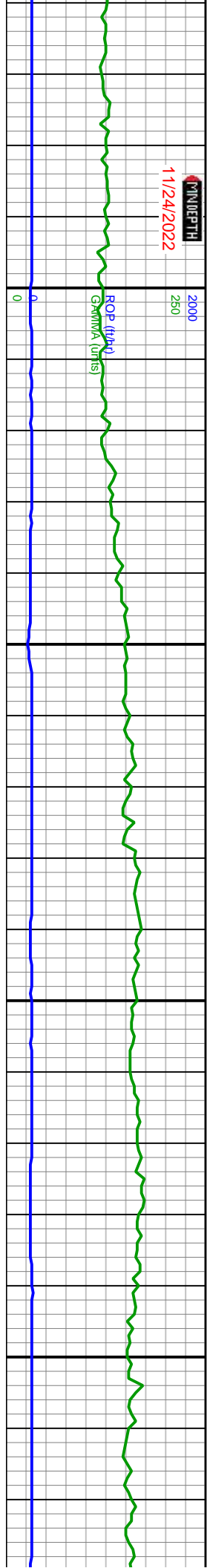
1057u

80% MRLST: predy dk gry,
 med gry, com mot wht, frm,
 blk, sb ang, vit, arg, calc;
 20% CHK: predy, lt gry-gry
 mot, fri, rthy tex, sb blk,
 arg, calc

75% MRLST: predy dk gry,
 med gry, com mot wht, frm,
 blk, sb ang, vit, arg, calc;
 25% CHK: predy, lt gry-gry
 mot, fri, rthy tex, sb blk,
 arg, calc



DATE: 11/24/2022
DEPTH: 2000
2500

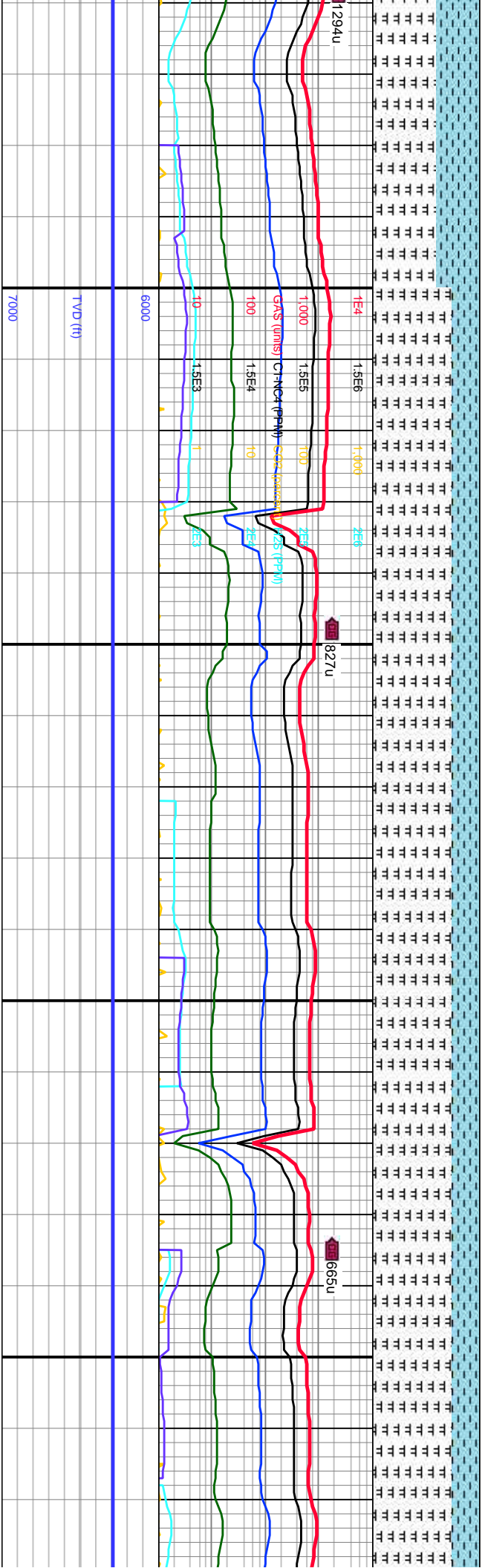


MM IN: 9.7
VIS IN: 53
MM OUT: 9.7
VIS OUT: 53

WOB: 18k MD: 9,016'
RPM: 100 INC: 89.71°
SPM: 226 AZM: 88.9°
PP: 3.706 TVD: 6,290.62'
VS: 2,240.05'

MD: 9,103'
INC: 90.32°
AZM: 88.7°
TVD: 6,290.59'
VS: 2,322.87'

MM IN: 9.75
VIS IN: 54
MM OUT: 9.75
VIS OUT: 54

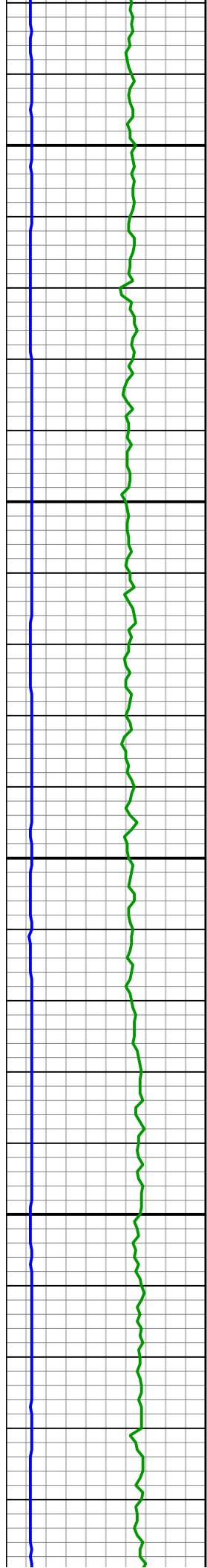


60% MRLST: predy dk gry,
med gry, com mot wht,
frm, blkly, sb ang, vlt, arg,
calc; 40% CHK: predy, lt
gry-gry mot, fri, rthy tex, sb
blkly, arg, calc

75% MRLST: predy dk gry,
med gry, com mot wht, frm,
blkly, sb ang, vlt, arg, calc;
25% CHK: predy, lt gry-gry
mot, fri, rthy tex, sb blkly,
arg, calc

75% MRLST: predy dk gry,
med gry, com mot wht, frm,
blkly, sb ang, vlt, arg, calc;
25% CHK: predy, lt gry-gry
mot, fri, rthy tex, sb blkly,
arg, calc





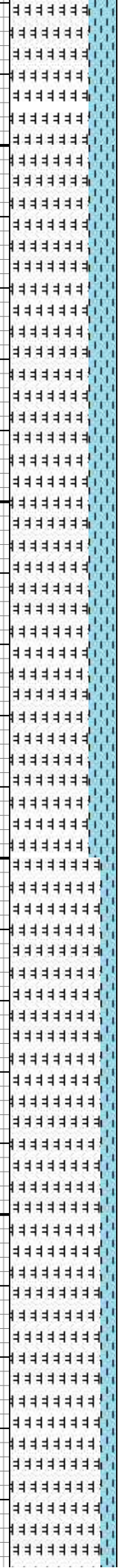
MD: 9,191'
 INC: 89.85°
 AZM: 88.8°
 TVD: 6,290.46'
 VS: 2,406.62'

MD: 9,279'
 INC: 90.39°
 AZM: 88.7°
 TVD: 6,290.28'
 VS: 2,490.37'

MD: 9,368'
 INC: 89.87°
 AZM: 88.8°
 TVD: 6,290.08'
 VS: 2,575.07'

MW IN: 9.7
 VIS IN: 53
 MW OUT: 9.7
 VIS OUT: 53

WOB: 16K
 RPM: 100
 SPM: 226
 PP: 3.702



921u

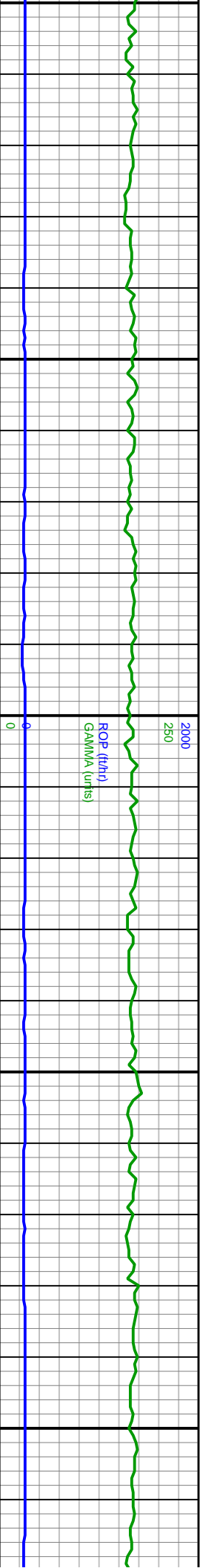
740u

RLST: predy dk gry,
 y, com mot wht, frm,
 b ang, vit, arg, calc;
 HK: predy, lt gry-gry
 i, rthy tex, sb blk,
 blk

75% MRLST: predy med
 gry, dk gry, com mot wht,
 frm, blk, sb ang, vit, arg,
 calc; 25% CHK: predy, lt
 gry-gry mot, fri, rthy tex, sb
 blk, arg, calc

85% MRLST: predy med
 gry, dk gry, com mot wht,
 frm, blk, sb ang, vit, arg,
 sl calc; 15% CHK: predy, lt
 gry-gry mot, fri, rthy tex, sb
 blk, arg, calc





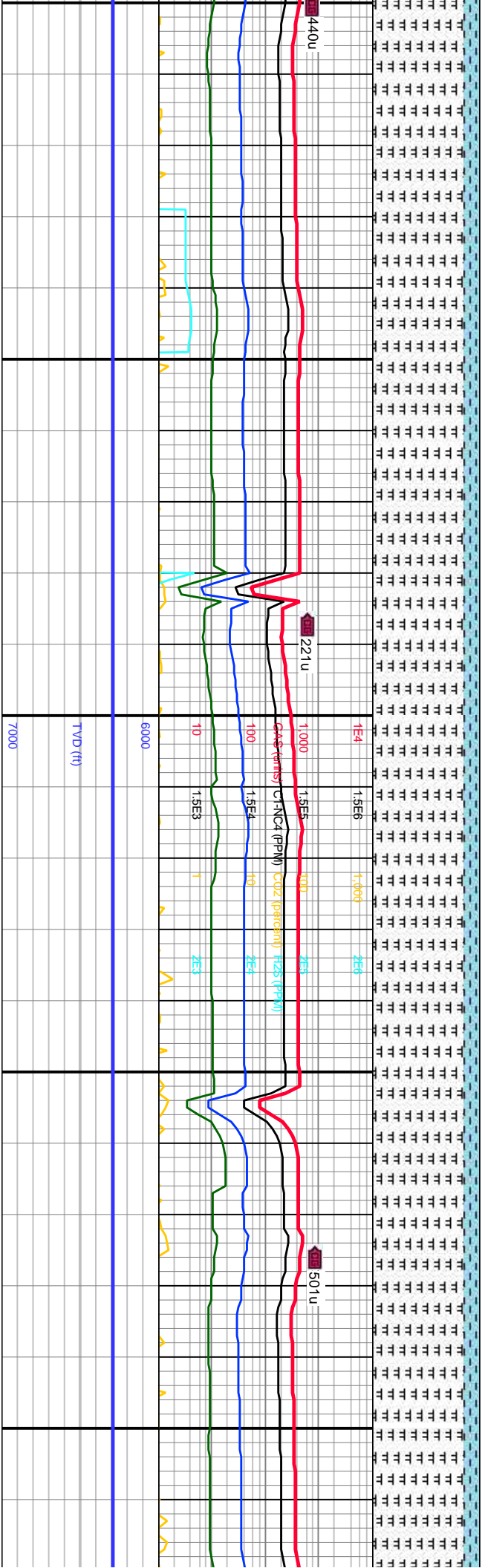
3:16K
INC: 100
AZM: 226
TVD: 3,701
VS: 2,659.78'

MD: 9,457'
INC: 90.38°
AZM: 88.7°
TVD: 6,289.89'
VS: 2,659.78'

MW IN: 9.75
VIS IN: 54
MW OUT: 9.75
VIS OUT: 54

MD: 9,545'
INC: 89.93°
AZM: 88.9°
TVD: 6,289.65'
VS: 2,743.56'

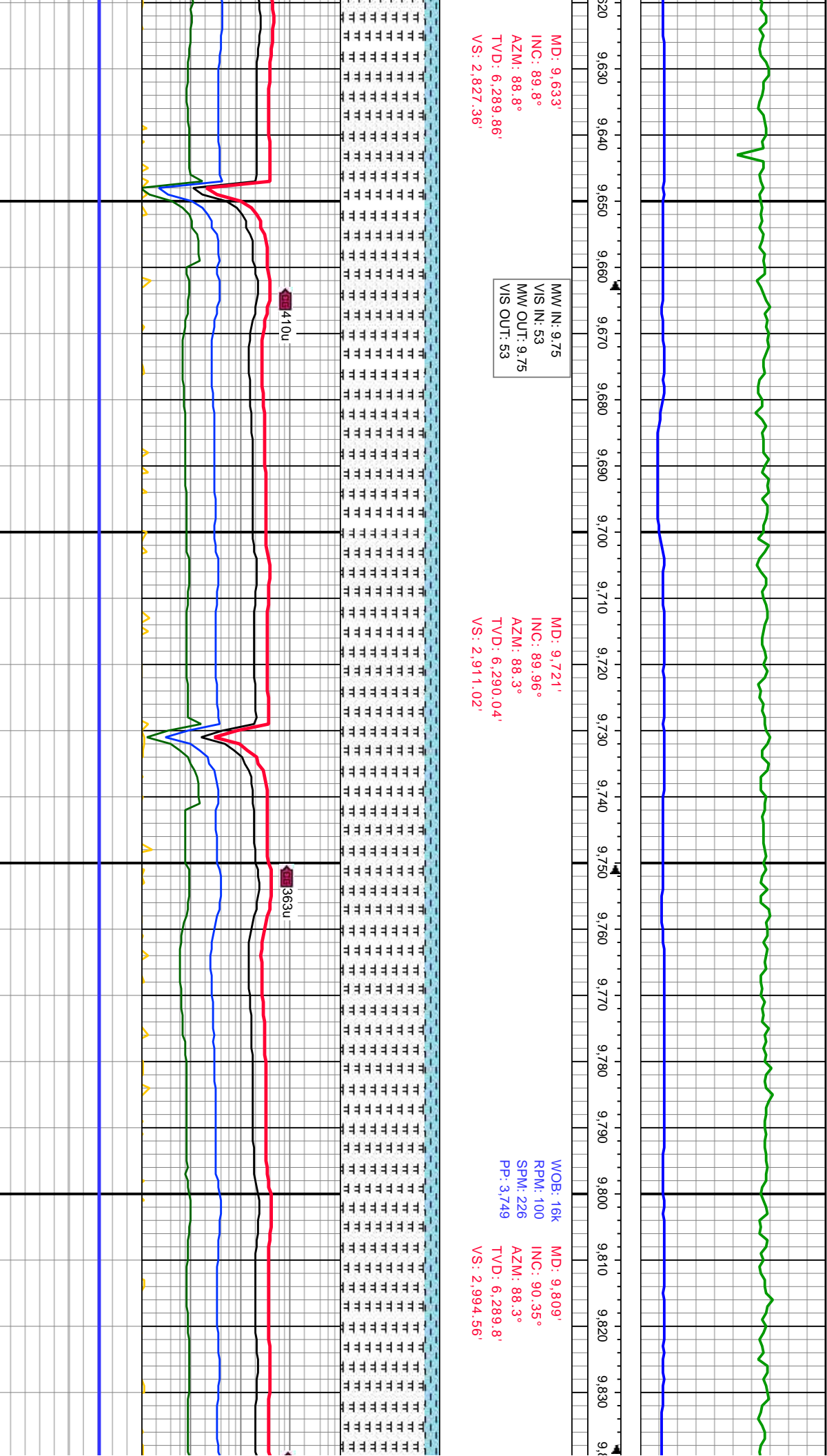
WOB: 16K
RPM: 100
SPM: 226
PP: 3.749



85% MRLST: predy med
gry, dk gry, com mot wht,
frm, blk, sb ang, vit, arg,
sl calc: 15% CHK: predy, lt
gry-gry mot, fri, rthy tex, sb
blk, arg, calc

85% MRLST: predy med
gry, dk gry, com mot wht,
frm, blk, sb ang, vit, arg,
sl calc: 15% CHK: predy, lt
gry-gry mot, fri, rthy tex, sb
blk, arg, calc

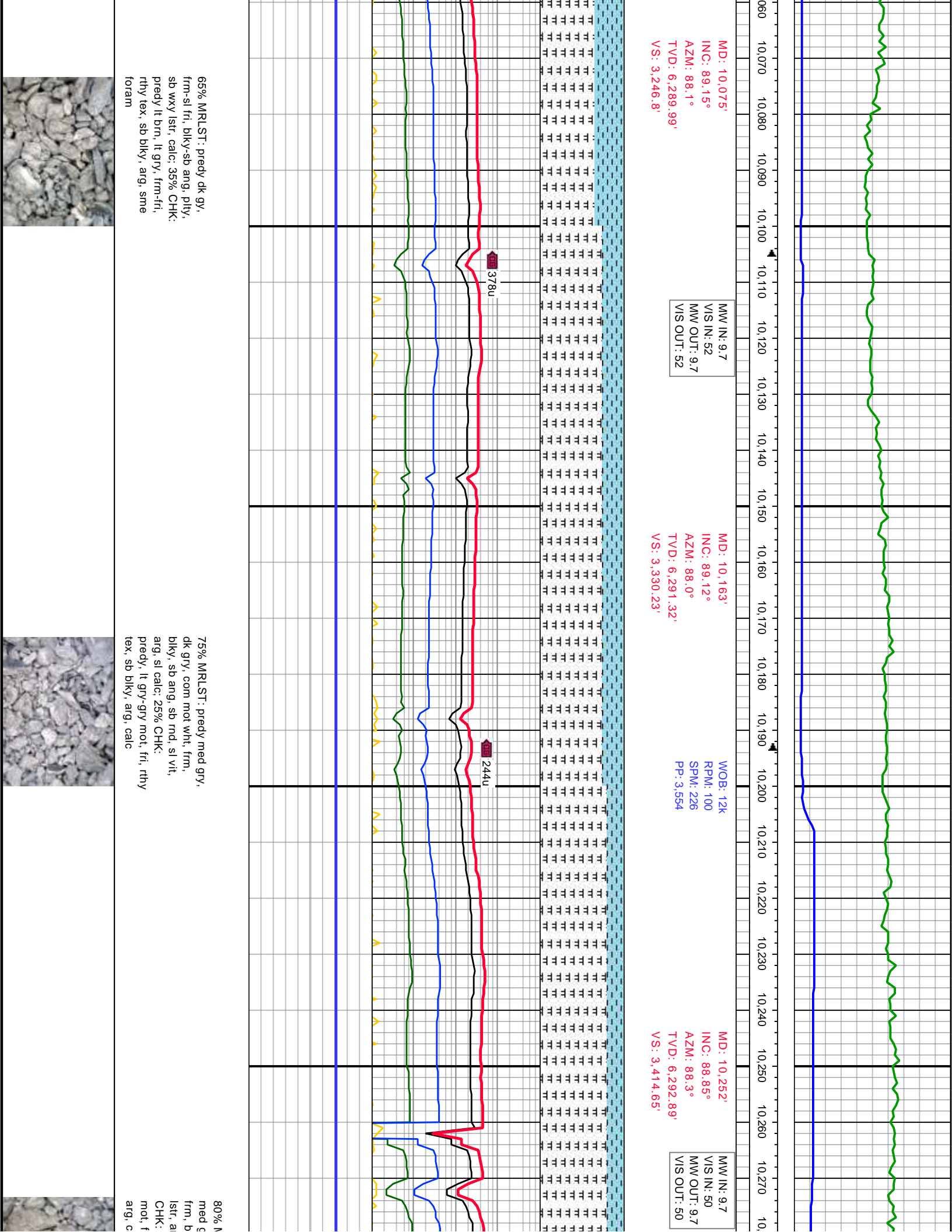


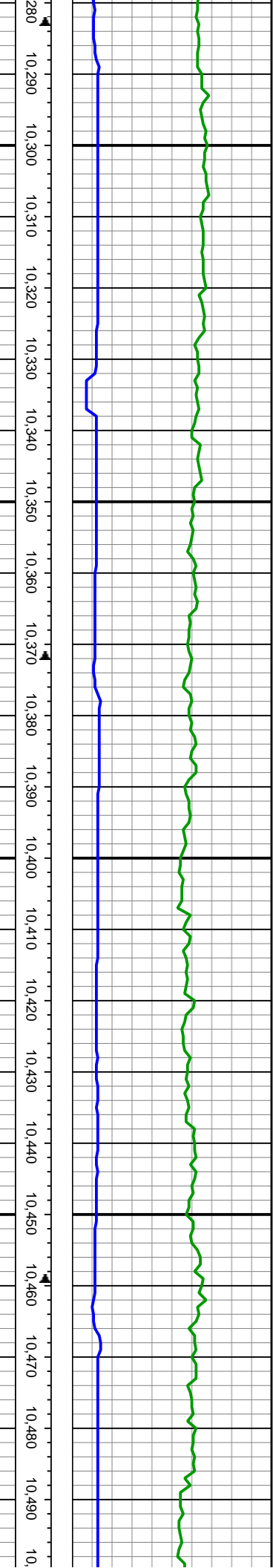


85% MRLST: predy med gry,
 dk gry, com mot wht, frm,
 blk, sb ang, vlt, arg, sl
 calc: 15% CHK: predy, lt
 gry-gry mot, fri, rthy tex, sb
 blk, arg, calc

85% MRLST: predy med gry,
 dk gry, com mot wht, frm,
 blk, sb ang, sb rnd, sl vlt,
 arg, sl calc: 15% CHK:
 predy, lt gry-gry mot, fri, rthy
 tex, sb blk, arg, calc





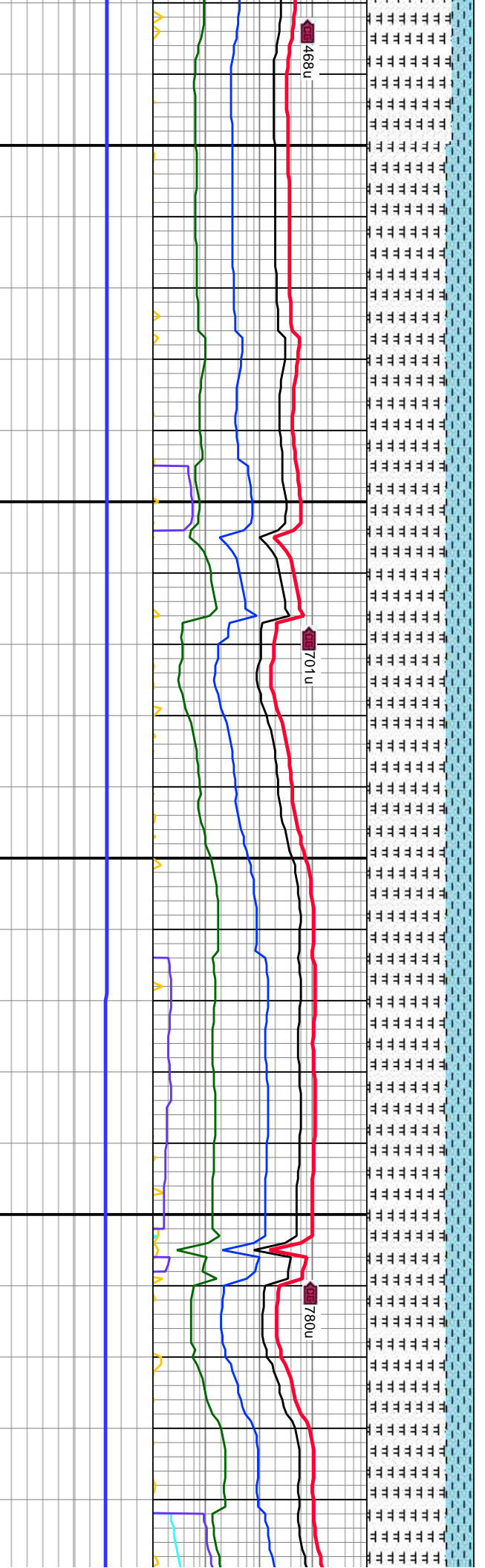


MD: 10,341'
 INC: 89.32°
 AZM: 88.2°
 TVD: 6,294.31'
 VS: 3,499.11'

MOB: 16k
 RPM: 100
 SPM: 226
 PP: 3.554

MD: 10,429'
 INC: 89.01°
 AZM: 88.3°
 TVD: 6,295.59'
 VS: 3,582.63'

MW IN: 9.7
 VIS IN: 50
 MW OUT: 9.7
 VIS OUT: 50

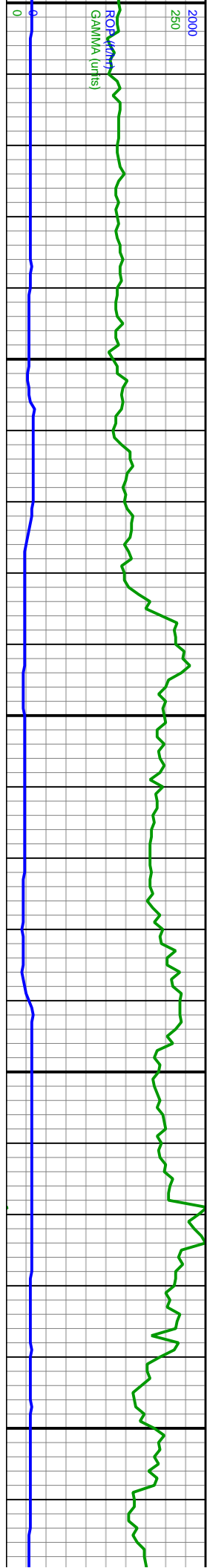


75% MRLST: predy dk gry,
 gry, com mot wht,
 blk- sb ang, sb wxy
 g, vit, calc: 20%
 predy lt brn, lt gry-gry
 ri, rthy tex, sb blk,
 calc

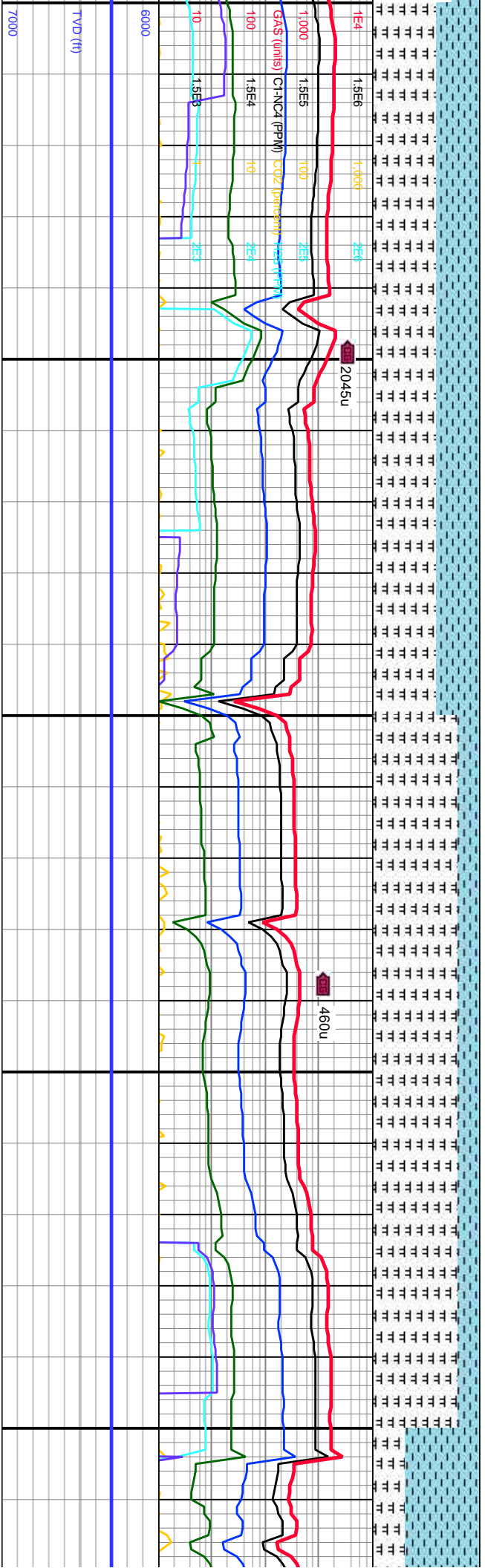
75% MRLST: predy dk gy,
 frm-sl fri, blk- sb ang, plty,
 sb wxy lstr, calc: 25% CHK:
 predy lt brn, lt gry, frm-fri,
 rthy tex, sb blk, arg, sme
 foram

75% MRLST: predy dk gry,
 med gry, com mot wht, frm,
 blk, sb ang, vit, arg, calc:
 25% CHK: predy, lt gry-gry
 mot, fri, rthy tex, sb blk,
 arg, calc





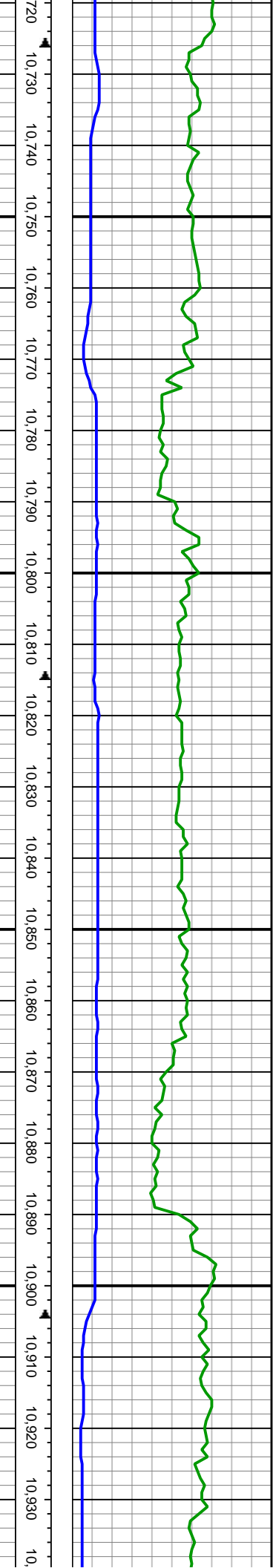
MD: 10,518' INC: 89.25° AZM: 87.8° TVD: 6,296.94' VS: 3,666.99'
 MD: 10,606' INC: 89.08° AZM: 88.6° TVD: 6,298.22' VS: 3,750.49'
 MD: 10,695' INC: 89.05° AZM: 88.9° TVD: 6,299.68' VS: 3,835.2'
 WOB: 8K RPM: 100 SPM: 226 PP: 3.671
 MW IN: 9.7 VIS IN: 50 MW OUT: 9.7 VIS OUT: 50



60% MRLST: dk gry, med gry, mot wht, frm-sl fri, blk-ly-sb ang, sb wxy lstr, calc: 40% CHK: predy lt gry, sme offwht, sl fri, rthy tex, sb blk-ly, arg, f mmica, calc

80% MRLST: predy dk gry, med gry, com mot wht, frm, blk-ly-sb ang, sb wxy lstr, arg, vlt, calc: 20% CHK: predy lt brn, lt gry-gry mot, fri, rthy tex, sb blk-ly, arg, calc



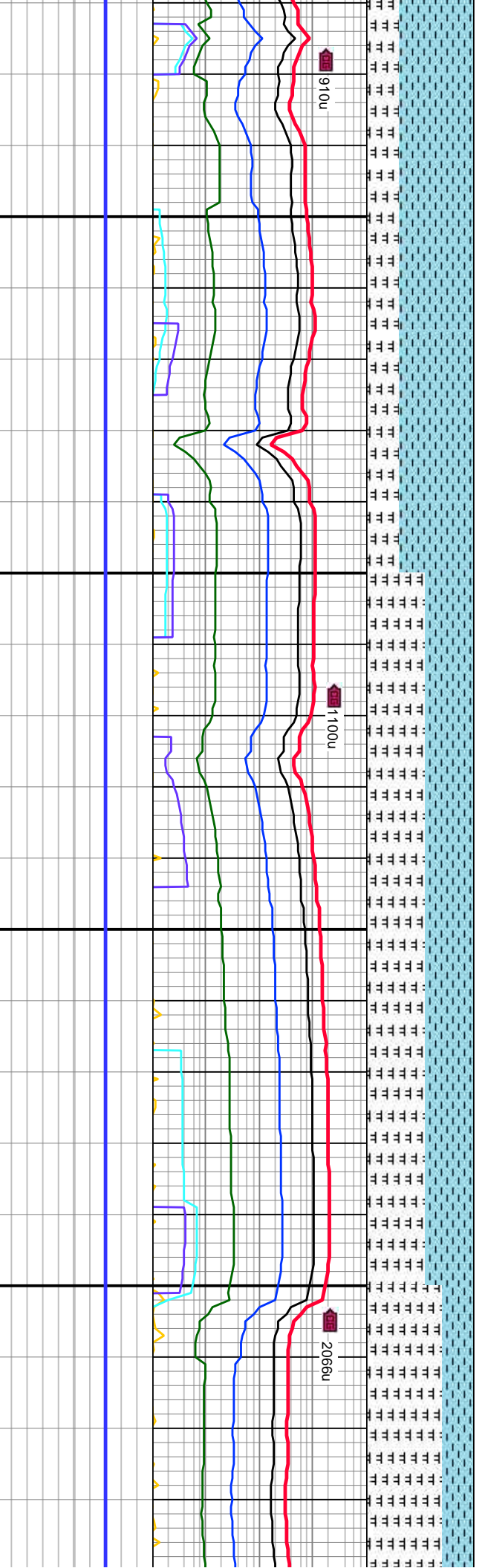


MD: 10,784'
 INC: 90.12°
 AZM: 88.5°
 TVD: 6,300.34'
 VS: 3,919.88'

WOB: 21k
 RPM: 100
 SPM: 226
 PP: 3.919

MD: 10,873'
 INC: 89.88°
 AZM: 88.8°
 TVD: 6,300.34'
 VS: 4,004.55'

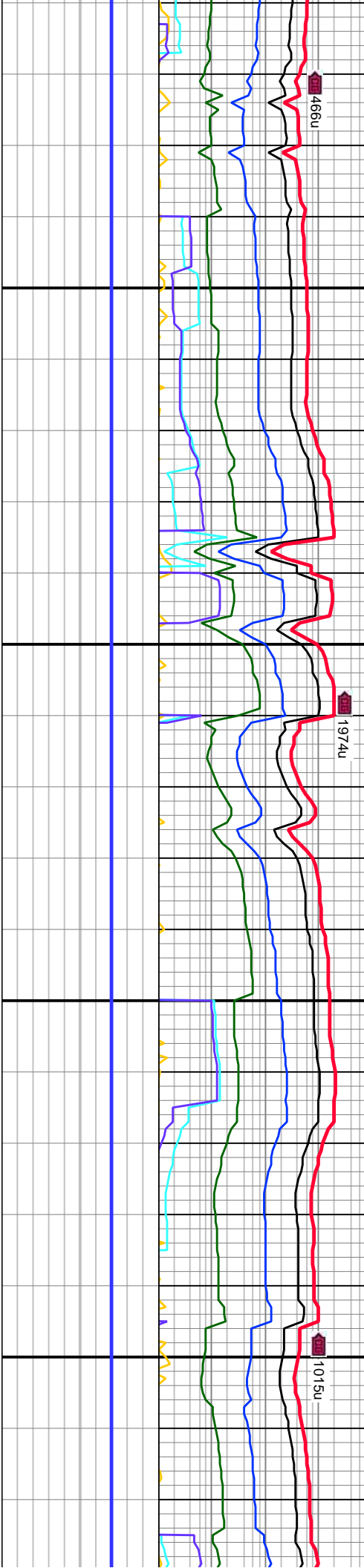
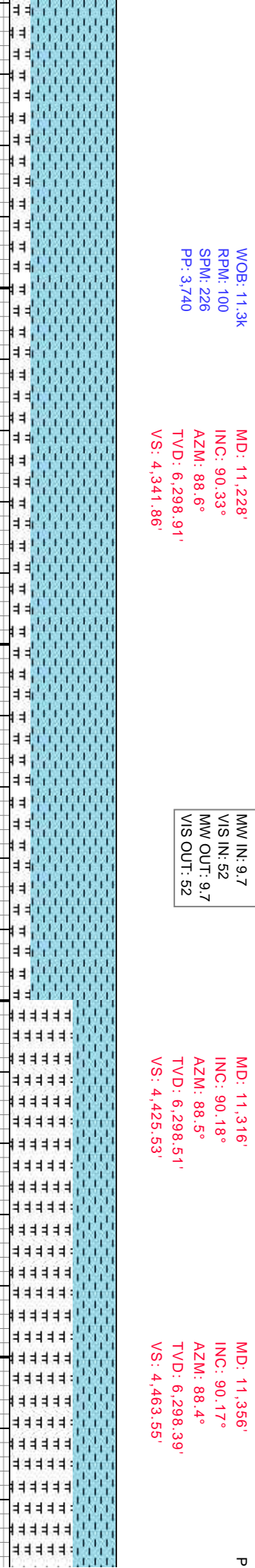
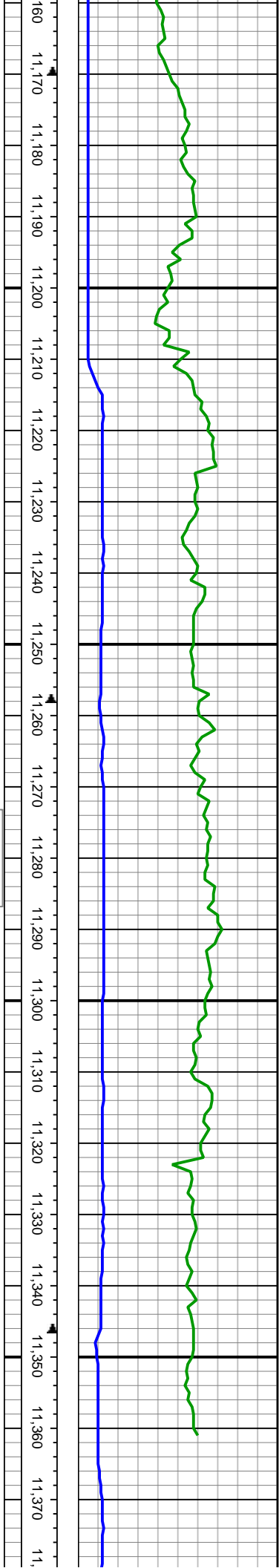
MW IN: 9.75
 VIS IN: 50
 MW OUT: 9.75
 VIS OUT: 50



70% CHK: predy lt brn, lt
 gry-gry mot, sme oftwht,
 frm-fri, sb blkly, arg, carb, t
 free chk frags: 30% MRLST:
 predy dk gry, occ dk-lt brn,
 com mot wht, frm, blkly-sb
 ang, sb ply, calc

55% MRLST: predy dk gry,
 med gry, com mot wht, frm,
 blkly, sb ang, vit, arg, calc:
 45% CHK: predy, lt gry-gry
 mot, fri, rthy tex, sb blkly,
 arg, calc



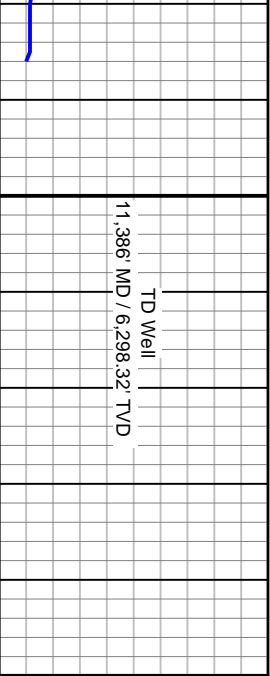


80% CHK: preddy lt gry, gry
 mot, sme ofwht, frm, blkly,
 arg, calc; 20% MRLST: preddy
 med gry, lt brn, com mot
 wht, frm, blkly, sb ang, carb,
 calc

80% CHK: preddy lt gry, gry
 mot, sme ofwht, frm, blkly,
 arg, calc; 20% MRLST:
 preddy med gry, lt brn, com
 mot wht, frm, blkly, sb ang,
 carb, calc

60% MRLST: preddy dk
 frm, blkly-sb ang, vit, f
 40% CHK: preddy med
 gry, frm, rthy tex, sb b
 arg, calc





ROP/Gamma
ROP 2000 ft/hr
GAMMA 250 units

Slide/Rotate

Depth Labels

Gas Show

Projection to Bit

D : 11,386'
IC: 90.17°
ZM: 88.4°
VD: 6,298.32'
S: 4,492.05'

Notes



% Lith

Total Gas
GAS
C1
C2
C3
IC4
NC4
CO2
H2S

End of Well

Well Bore
TVD

Lithology Descriptions

gy,
salc;
gry, lt
milky,

Images