



Confluence DJ LLC

LONG STRING POST JOB REPORT

Bigfoot #11-10-3 05-123-51763
S:11 T:4N R:63W Weld CO

CallSheet #: 84489
Proposal #: 64922



LONG STRING Post Job Report

Attention: Justin Gale | (970) 590-7709 | jgale@confluencelp.com
Confluence DJ LLC
1670 Broadway Suite 2000 | Denver, CO 80202

Dear Justin Gale,

Thank you for the opportunity to provide cementing services on this well. American Cementing strives to achieve complete customer satisfaction. If you have any questions regarding the services or data provided, please contact American Cementing at any time.

Sincerely,

Aimee Sankovich

Field Engineer I | (307) 689-0323 | aimee.sankovich@americacementing.com

Field Office 1716 E Allison Rd, Cheyenne, WY 82007
Phone: (307) 414-0049

Job Details & Summary

Geometry

Type	Function	OD (in)	ID (in)	Weight (lb/ft)	Top (ft)	Bottom (ft)	Excess (%)
Casing	Outer	9.625	8.921	36	0	1800	0
Open Hole	Outer		8.5		1800	2800	0
Open Hole	Outer		8.5		2800	11412	7
Casing	Inner	5.5	4.778	20	0	11412	0

Equipment / People

Unit Type	Unit
AS Cement Trailer Float	CTF-9594
AS Cement Trailer Float	CTF-9054
AS Cement Trailer Float	CTF-031
Field Storage Silo	FSS-449
Field Storage Silo	FSS-445

Timing

Event	Date/Time
Call Out	11/19/2022 18:00
Depart Facility	11/19/2022 21:00
On Location	11/19/2022 23:00
Rig Up Iron	11/19/2022 23:30
Job Started	11/20/2022 07:00
Job Completed	11/20/2022 10:10
Rig Down Iron	11/20/2022 10:30
Depart Location	11/20/2022 12:00

General Job Information

Metrics	Value
Well Fluid Density	9.8 lb/gal
Well Fluid Type	OBM
Rig Circulation Vol	2700 bbls
Rig Circulation Time	5 hours
Calculated Displacement	255.41 bbls
Actual Displacement	255.5 bbls
Total Spacer to Surface	40 bbls

Job Details

Metrics	Value
Flare Prior to Job	No
Flare Prior to Job	0 units
Flare During Job	No
Flare During Job	0 units
Flare at End of Job	No
Flare at End of Job	0 units
Well Full Prior to Job	Yes
Well Fluid Density Into Well	9.8 lb/gal
Well Fluid Density Out of Well	9.8 lb/gal

Job Details (cont.)

Metrics	Value
BHCT	235 °F
BHST	235 °F

Water Analysis

Metrics	Value	Recommended
Water Source	None	
Temperature	70 °F	50-80 °F
pH Level	7	5.5-8.5
Chlorides	0 mg/L	0-3000 mg/L
Total Alkalinity	140	0-1000
Total Hardness	100 mg/L	0-500 mg/L
Carbonates	60 mg/L	0-100 mg/L
Sulfates	200 mg/L	0-1500 mg/L
Potassium	450 mg/L	0-3000 mg/L
Iron	0.15 mg/L	0-300 mg/L

Circulation

Lost Circulation Experienced
No

Job Execution Information

Fluid	Product	Function	Density (lb/gal)	Yield (ft ³ /sk)	Water Rq. (gal/sk)	Water Rq. (gal/bbl)	Volume (sks)	Volume (bbl)	Designed Top (ft)
1	IntegraGuard EZ	Spacer	12.50			28.44		145.00	0
2	Primary	Primary	14.50	1.47	6.60		1440.00	377.66	2800
3	Retarded Water	Displacement	8.35			41.81		20.00	10490
4	Water with Chems	DisplacementFinal	8.34			41.91		233.00	0

Job Fluid Details

Fluid	Type	Fluid	Product	Function	Conc.	Uom
1	Spacer	IntegraGuard EZ	WEIGHTING ADDITIVE, W-11	Heavyweight	275.83	lb/bbl
1	Spacer	IntegraGuard EZ	GW-86	Viscosifier	1.00	lb/bbl
1	Spacer	IntegraGuard EZ	R-31	Retarder	0.50	lb/bbl
1	Spacer	IntegraGuard EZ	R-7C	Retarder	2.00	lb/bbl
1	Spacer	IntegraGuard EZ	Surfactant, S-801c	Surfactant	1.00	gal/bbl
2	Primary	Primary	IntegraCem P25GF	Cement	100.00	%
2	Primary	Primary	EC-2	BondEnhancer	3.00	%BWOB
2	Primary	Primary	FL-24	FluidLoss	0.30	%BWOB
2	Primary	Primary	FL-66	FluidLoss	0.30	%BWOB
2	Primary	Primary	FP-24	Defoamer	0.30	%BWOB
2	Primary	Primary	GW-86	Viscosifier	0.10	%BWOB
2	Primary	Primary	S-8	StrengthRetrogression	20.00	%BWOB
2	Primary	Primary	SR-20	Retarder	0.05	%BWOB
2	Primary	Primary	STATIC FREE	Other	0.01	lb/sk
3	Displacement	Retarded Water	BIOCIDE,BIOC11139W	Biocide	0.01	gal/bbl
3	Displacement	Retarded Water	ResCare CS-2	ClayProtection	0.08	gal/bbl
3	Displacement	Retarded Water	SR-61L	Retarder	0.10	gal/bbl
4	DisplacementFinal	Water with Chems	BIOCIDE,BIOC11139W	Biocide	0.01	gal/bbl
4	DisplacementFinal	Water with Chems	ResCare CS-2	ClayProtection	0.08	gal/bbl

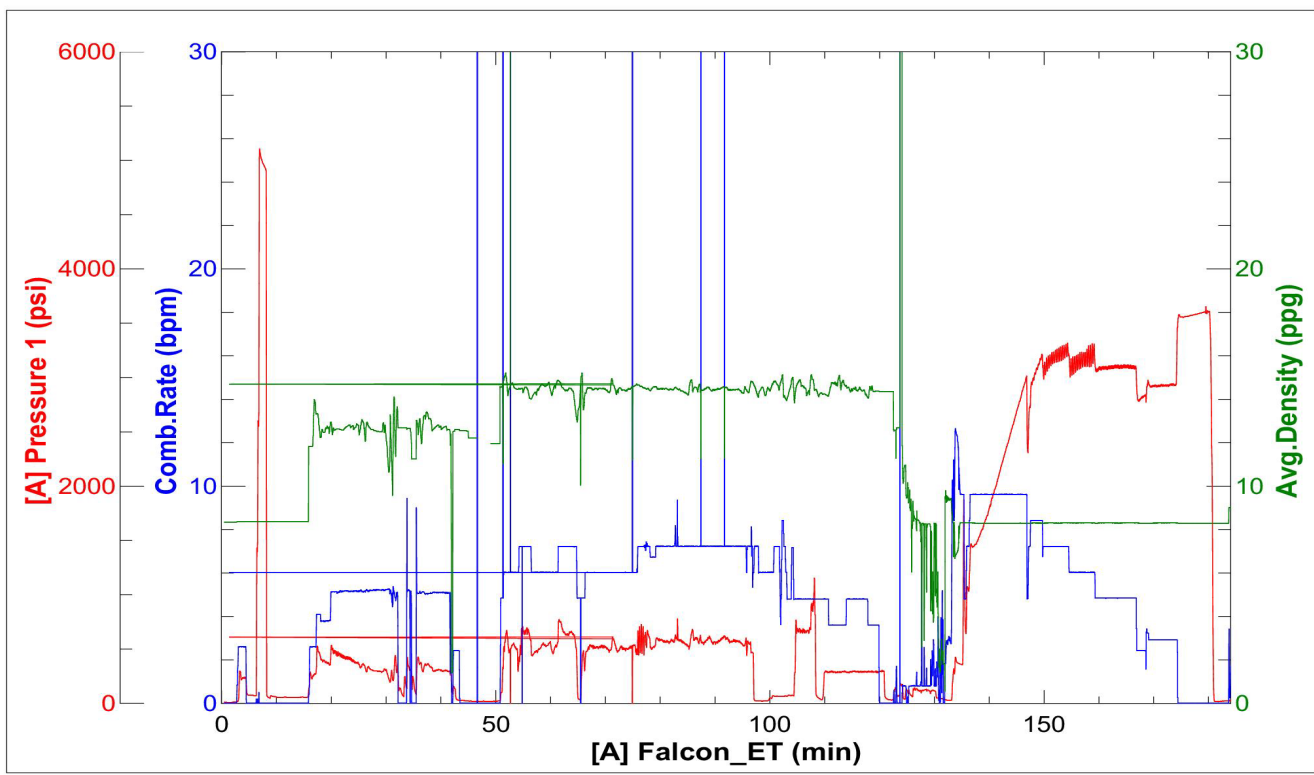
Job Logs

Line	Event	Date (MM/DD/YY)	Time (HH:MM)	Density (lb/gal)	Pump Rate (bpm)	Pump Volume (bbls)	Pipe Pressure (psi)	Comment
1	Callout	11/19/2022	18:00					Confluence Bigfoot 11-10-3 5.5 Long String Production called out. On location time 1:00.
2	Arrive On Location	11/19/2022	23:00					Meeting with PIC on location and discussed job procedures and cement volumes.
3	Safety Meeting	11/19/2022	23:15					Meeting with cement crew on location and discussed hazards during ring up.
4	Rig Up Equipment	11/19/2022	23:30					No injuries or equipment damage reported.
5	Wait On Rig	11/20/2022	01:00					Waiting on rig to run casing and circulate well.
6	Safety Meeting	11/20/2022	05:30					Meeting with cement and rig crew and discussed job procedures and cement volumes. Rig Still had to check flow line to dump spacer returns to pit and pump 40 bbls of pill before job.
7	Fill Lines	11/20/2022	07:06	8.4	5	2.5	300	Pumped fresh water to fill lines and establish circulation.
8	Pressure Test	11/20/2022	07:10					Pressure test lines to 5000 PSI.
9	Pump Spacer	11/20/2022	07:20	12.5	5	145	450	Mixed and pumped 145 bbls of Tune Spacer @ 12.5 ppg with Visosifier - 1.000 lb/bbl, Retarder R-31 - 0.5000 lb/bbl, Retarder R - 7 2.000 lb/bbl, Surfactant 1.000 lb/bbl.
10	Pump Cement	11/20/2022	07:55	14.5	6	377	650	Mixed and pumped 377 bbls of cement @ 14.5 ppg, 1.47 yld, 6.6 gal/sk. Additives BondEnhancer 3.000 % BWOB, Fluid Loss -24 .0300 % BWOB, Fluid Loss - 66 .0300 % BWOB, Defomer - 24 0.3000 % BWOB, Viscosifier - 0.100 % BWOB, StrengthRetgression - 20.000 % BWOB, Retarder - 0.050 % BWOB, Static Free - 0.010 lb/sk. Had to shutdown for 10 mins cause both truck lost mix water. 2nd pump lost hydarlics and had to finish job with one pump.
11	Shutdown	11/20/2022	09:04				0	Alined valves to wash pumps and lines
12	WashPumps and Lines	11/20/2022	09:06	8.4				Wash pumps and lines to pit. PIC witness plug loaded in plug continer.
13	Drop Plug	11/20/2022	09:10					PIC witness plug drop.
14	Pump Displacement	11/20/2022	09:17	8.4	8	235	3380	Pumped the 1st 20 bbls of displacement with SR-61L retarder. Finished displcement with Biocide - 0.010 gal/bbl, Clay Protection - 0.080 gla/bbl. Total displacement 255.41 bbls. Spacer to surface 215 bbls away.
15	Slow Rate	11/20/2022	09:54	8.4	3	20	2900	Slowed rate @ 235 bbls away to bump plug. PSI to land plug 2700 PSI.
16	Bump Plug	11/20/2022	09:59				3400	FCP 2900 PSI. 500 PSI over to 3400 PSI.
17	Shutdown	11/20/2022	09:59				3400	
18	Check Floats	11/20/2022	10:04				0	3 bbls back and floats held. 40 bbls of spacer to surface. TOC @ 2321 ft.
19	End Job	11/20/2022	10:10					
20	Safety Meeting	11/20/2022	10:20					Meeting with cement crew and discussed hazards during rig down.
21	Rig Down Equipment	11/20/2022	10:30					Washed up and rigged down equipment. No injures or equipment reported.
22	Crew Leave Location	11/20/2022	12:00					Thankyou for using American Cementing.

Pump Diagrams



JobMaster Program Version 5.01C1
Job Number: 84489
Customer: Confluence
Well Name: Bigfoot 11-10-3



Job Start: Sunday, November 20, 2022