



Confluence DJ LLC LONG STRING POST JOB REPORT

Bigfoot #11-9-2 05-123-51761
S:11 T:4N R:63W Weld CO

CallSheet #: 84448
Proposal #: 64861



LONG STRING Post Job Report

Attention: Justin Gale | (970) 590-7709 | jgale@confluencelp.com

Confluence DJ LLC

1670 Broadway Suite 2000 | Denver, CO 80202

Dear Justin Gale,

Thank you for the opportunity to provide cementing services on this well. American Cementing strives to achieve complete customer satisfaction. If you have any questions regarding the services or data provided, please contact American Cementing at any time.

Sincerely,

Aimee Sankovich

Field Engineer I | (307) 689-0323 | aimee.sankovich@americacementing.com

Field Office 1716 E Allison Rd, Cheyenne, WY 82007
Phone: (307) 414-0049

Job Details & Summary

Geometry

Type	Function	OD (in)	ID (in)	Weight (lb/ft)	Top (ft)	Bottom (ft)	Excess (%)
Casing	Outer	9.625	8.921	36	0	1773	0
Open Hole	Outer		8.5		1773	6339	0
Open Hole	Outer		8.5		6339	11306	7
Casing	Inner	5.5	4.778	20	0	11286	0

Equipment / People

Unit Type	Unit
AS Cement Trailer Float	CTF-308
AS Cement Trailer Float	CTF-031
Cement Pump Float	CPF-074
Light Duty Vehicles	LDV-049

Timing

Event	Date/Time
Call Out	11/13/2022 20:00
Depart Facility	11/13/2022 21:00
On Location	11/14/2022 00:30
Rig Up Iron	11/14/2022 02:00
Job Started	11/14/2022 04:20
Job Completed	11/14/2022 06:57
Rig Down Iron	11/14/2022 07:00
Depart Location	11/14/2022 09:30

General Job Information

Metrics	Value
Well Fluid Density	9.8 lb/gal
Well Fluid Type	OBM
Rig Circulation Vol	1200 bbls
Rig Circulation Time	1.5 hours
Calculated Displacement	250 bbls
Actual Displacement	250 bbls
Total Spacer to Surface	12 bbls

Casing Equipment

Type	Description	Qty
CENTRALIZER,5-1/2"NON-WELD	Matrix	260

Job Details

Metrics	Value
Flare Prior to Job	No
Flare Prior to Job	430 units
Flare During Job	No
Flare During Job	0 units
Flare at End of Job	No
Flare at End of Job	0 units
Well Full Prior to Job	Yes
Well Fluid Density Into Well	9.8 lb/gal
Well Fluid Density Out of Well	9.8 lb/gal

Job Details (cont.)

Metrics	Value
BHCT	235 °F
BHST	235 °F

Water Analysis

Metrics	Value	Recommended
Water Source	Upright Rig Tank	
Temperature	49 °F	50-80 °F
pH Level	8	5.5-8.5
Chlorides	0 mg/L	0-3000 mg/L
Total Alkalinity	180	0-1000
Total Hardness	125 mg/L	0-500 mg/L
Carbonates	140 mg/L	0-100 mg/L
Sulfates	<200 mg/L	0-1500 mg/L
Potassium	450 mg/L	0-3000 mg/L
Iron	0.15 mg/L	0-300 mg/L

Circulation

Lost Circulation Experienced
No

Job Execution Information

Fluid	Product	Function	Density (lb/gal)	Yield (ft ³ /sk)	Water Rq. (gal/sk)	Water Rq. (gal/bbl)	Volume (sks)	Volume (bbl)	Designed Top (ft)
1	IntegraGuard EZ	Spacer	12.50			28.44		145.00	0
2	Primary	Primary	14.50	1.47	6.60		1415.00	371.10	2800
3	Retarded Water	Displacement	8.35			41.81		20.00	10358
4	Water with Chems	DisplacementFinal	8.34			41.91		230.00	0

Job Fluid Details

Fluid	Type	Fluid	Product	Function	Conc.	Uom
1	Spacer	IntegraGuard EZ	WEIGHTING ADDITIVE, W-11	Heavyweight	275.83	lb/bbl
1	Spacer	IntegraGuard EZ	GW-86	Viscosifier	1.00	lb/bbl
1	Spacer	IntegraGuard EZ	R-31	Retarder	0.50	lb/bbl
1	Spacer	IntegraGuard EZ	R-7C	Retarder	2.00	lb/bbl
1	Spacer	IntegraGuard EZ	Surfactant, S-801c	Surfactant	1.00	gal/bbl
2	Primary	Primary	IntegraCem P25GF	Cement	100.00	%
2	Primary	Primary	EC-2	BondEnhancer	3.00	%BWOB
2	Primary	Primary	FL-24	FluidLoss	0.30	%BWOB
2	Primary	Primary	FL-66	FluidLoss	0.30	%BWOB
2	Primary	Primary	FP-24	Defoamer	0.30	%BWOB
2	Primary	Primary	GW-86	Viscosifier	0.10	%BWOB
2	Primary	Primary	S-8	StrengthRetrogression	20.00	%BWOB
2	Primary	Primary	SR-20	Retarder	0.05	%BWOB
2	Primary	Primary	STATIC FREE	Other	0.01	lb/sk
3	Displacement	Retarded Water	BIOCIDE,BIOC11139W	Biocide	0.01	gal/bbl
3	Displacement	Retarded Water	ResCare CS-2	ClayProtection	0.08	gal/bbl
3	Displacement	Retarded Water	SR-61L	Retarder	0.10	gal/bbl
4	DisplacementFinal	Water with Chems	BIOCIDE,BIOC11139W	Biocide	0.01	gal/bbl
4	DisplacementFinal	Water with Chems	ResCare CS-2	ClayProtection	0.08	gal/bbl

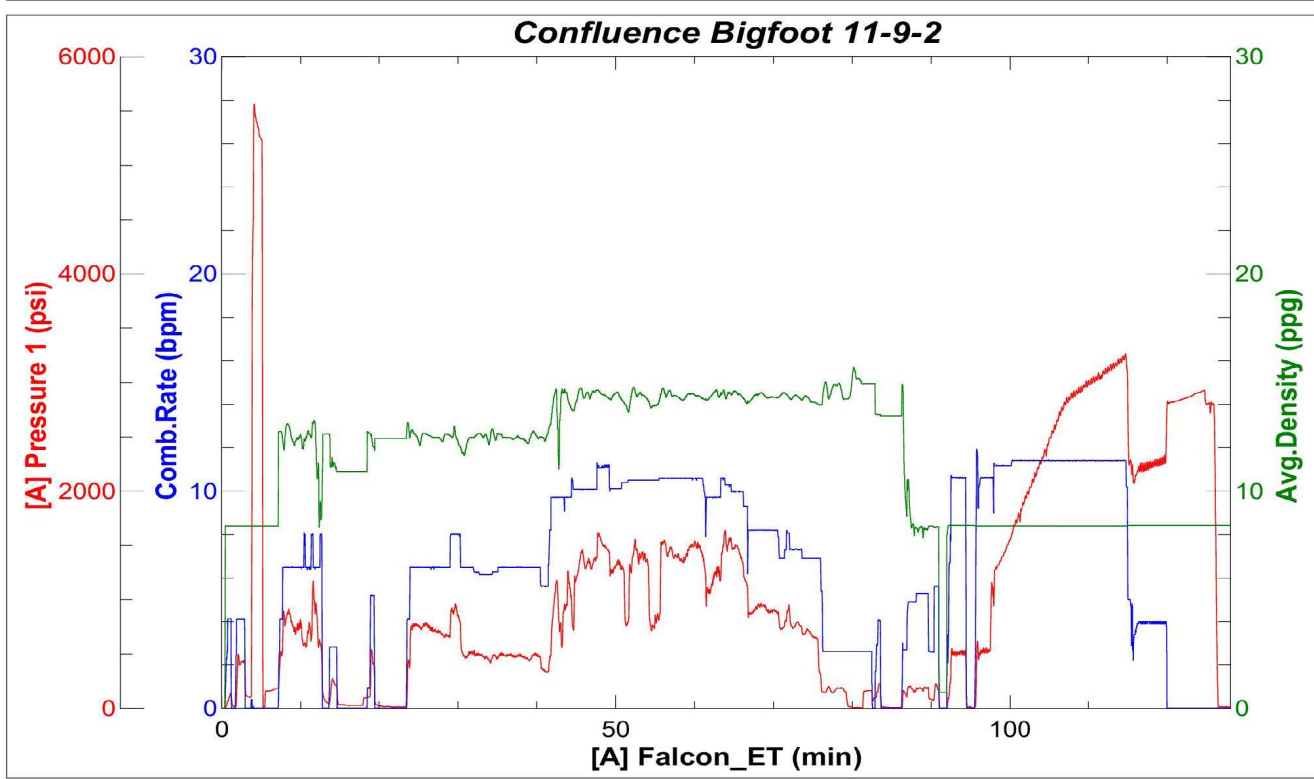
Job Logs

Line	Event	Date (MM/DD/YY)	Time (HH:MM)	Density (lb/gal)	Pump Rate (bpm)	Pump Volume (bbls)	Pipe Pressure (psi)	Comment
1	Call Out	11/13/2022	21:00					Customer requested crew for ONL of 3:00 11/14/22
2	Depart Shop	11/13/2022	22:00					Crew has journey management and departs for location
3	Arrive On Location	11/14/2022	00:30					ACC arrives on location and meet with customer
4	Safety Meeting	11/14/2022	01:45					ACC has safety meeting over rigging up iron and hoses
5	Rig Up Iron	11/14/2022	02:00					ACC rigs up iron and hoses
6	Safety Meeting	11/14/2022	04:05					Safety meeting with ACC, rig crew and company man over job and hazards
7	Fill pumps And Lines	11/14/2022	04:20	8.33	4	4	550	Fill Pumps and lines
8	Pressure Test	11/14/2022	04:30	8.33	0.5	0.5	5230	Pressure test iron to 5000 PSI
9	Pump Spacer	11/14/2022	04:45	12.5	6.5	145	526	Pump 145 bbls of 12.5 PPG spacer
10	Shut Down	11/14/2022	04:52			20		20 bbls into spacer shut down due to packing off from losing hydraulic power to rec pump
11	Pump Spacer	11/14/2022	04:58	12.5	6.5	145	545	Pump 12.5 PPG spacer
12	Pump Primary Cement	11/14/2022	05:35	14.5	10	371.1	466	Pump 371.1 bbls of 14.5 PPG Primary Cement At 10 bpm (1415 Sks, 1.47 Yield, 6.60 Gals/Sks, TOC 2192'
13	Pump Primary Cement	11/14/2022	05:45	14.5	10	100	578	100 bbls into cement
14	Pump Primary Cement	11/14/2022	05:55	14.5	10	200	987	200 bbls into cement
15	Pump Primary Cement	11/14/2022	06:05	14.5	10	300	885	300 bbls into cement
16	Shut Down	11/14/2022	06:18			371.1		Pump total of 371.1 bbls of 14.5 PPG primary cement and shut down
17	Wash Pumps And Lines	11/14/2022	06:22	8.33	5	15	45	Wash pumps and lines
18	Drop Top Plug	11/14/2022	06:26	8.33				Drop top plug with company man to verify plug went downhole
19	Pump Displacement	11/14/2022	06:26	8.33	10		1302	Pump 250 bbls of freshwater displacement
20	Pump Displacement	11/14/2022	06:36	8.33	10	100	2207	100 bbls into displacement
21	Pump Displacement	11/14/2022	06:43	8.33	10	200	3108	200 bbls into displacement
22	Slow Rate	11/14/2022	06:48	8.33	4	230	2400	230 bbls into displacement slow rate to 4 bpm
23	Spacer To Surface	11/14/2022	06:50	8.33	4	238	2320	238 bbls into displacement got spacer to surface for total of 12 bbls of spacer to surface
24	Land Plug	11/14/2022	06:53	8.33		250	2962	Bump plug to 2962 PSI FCP of 2230 PSI, total displacement of 250 bbls
25	Check Floats	11/14/2022	06:58					Hold for 5 mins check floats and got 2.5 bbls back floats holding
26	Safety Meeting	11/14/2022	07:00					ACC has safety meeting over rigging down iron and hoses
27	Rig Down Iron	11/14/2022	07:00					ACC rigs down iron and hoses
28	Depart Location	11/14/2022	08:30					ACC has journey management and departs location

Pump Diagrams



JobMaster Program Version 5.01C1
Job Number: 84150
Customer: Confluence
Well Name: Bigfoot 11-9-2



Job Start: Monday, November 14, 2022