

NOBLE ENERGY, INC

Location: COLORADO Slot: SLOT#19 PIONEER Y18-725 (726'FNL & 2239'FEL,SEC.07)
 Field: WELD COUNTY (NOBLE NAD 83 GRID) Well: PIONEER Y18-725
 Facility: SEC.07-T02N-R64W Wellbore: PIONEER Y18-725 PWB

Plot reference wellpath is PIONEER Y18-725 (REV-A.0) PWP
 True vertical depths are referenced to (4884'GL+30'KB@4914'RKB) (RKB)
 Reference wellpath measured depths are referenced to (4884'GL+30'KB@4914'RKB) (RKB)
 (4884'GL+30'KB@4914'RKB) (RKB) to Mean Sea Level: 4914 feet
 Mean Sea Level to Mud line (At Slot: SLOT#19 PIONEER Y18-725 (726'FNL & 2239'FEL,SEC.07)): 0 feet
 Offset wellpath MDs are referenced to each path's default MD datum

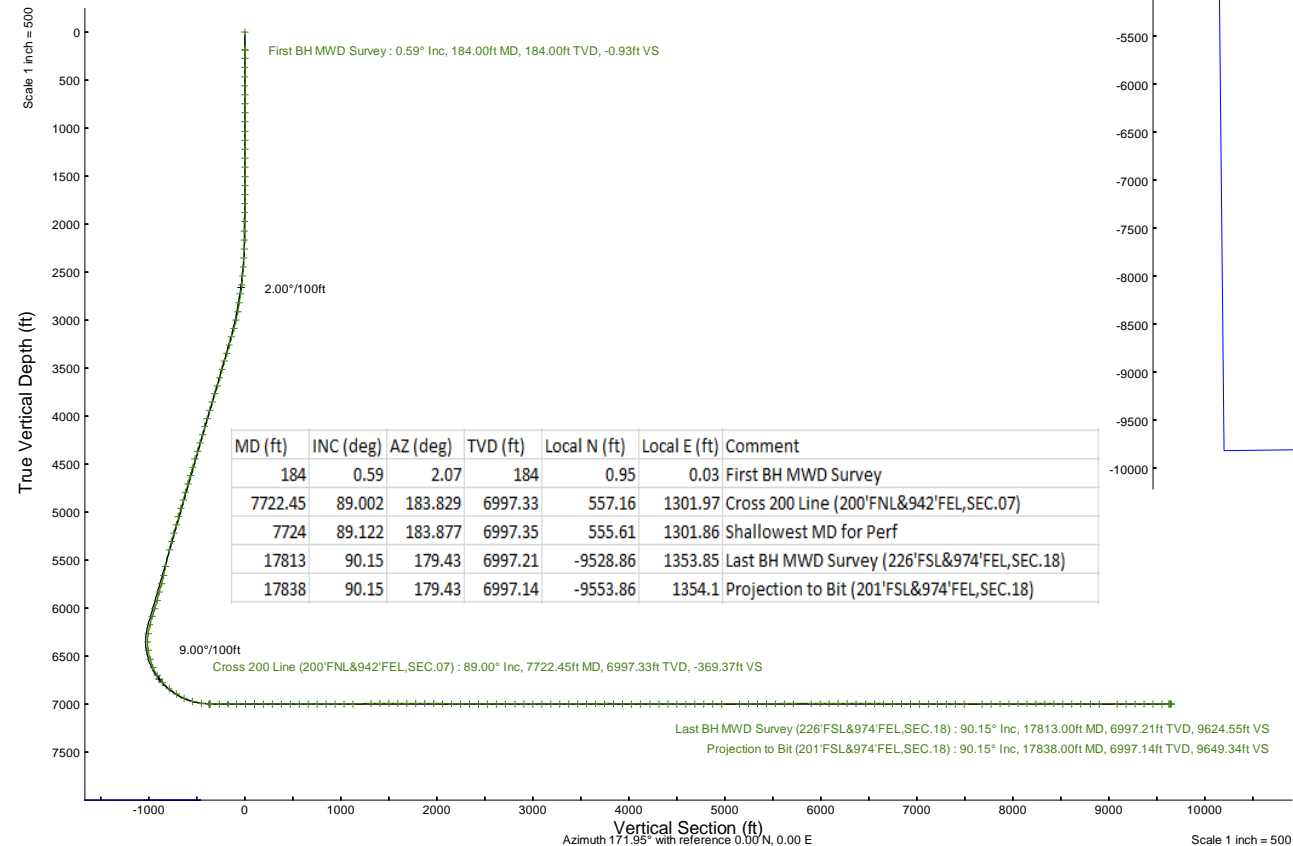
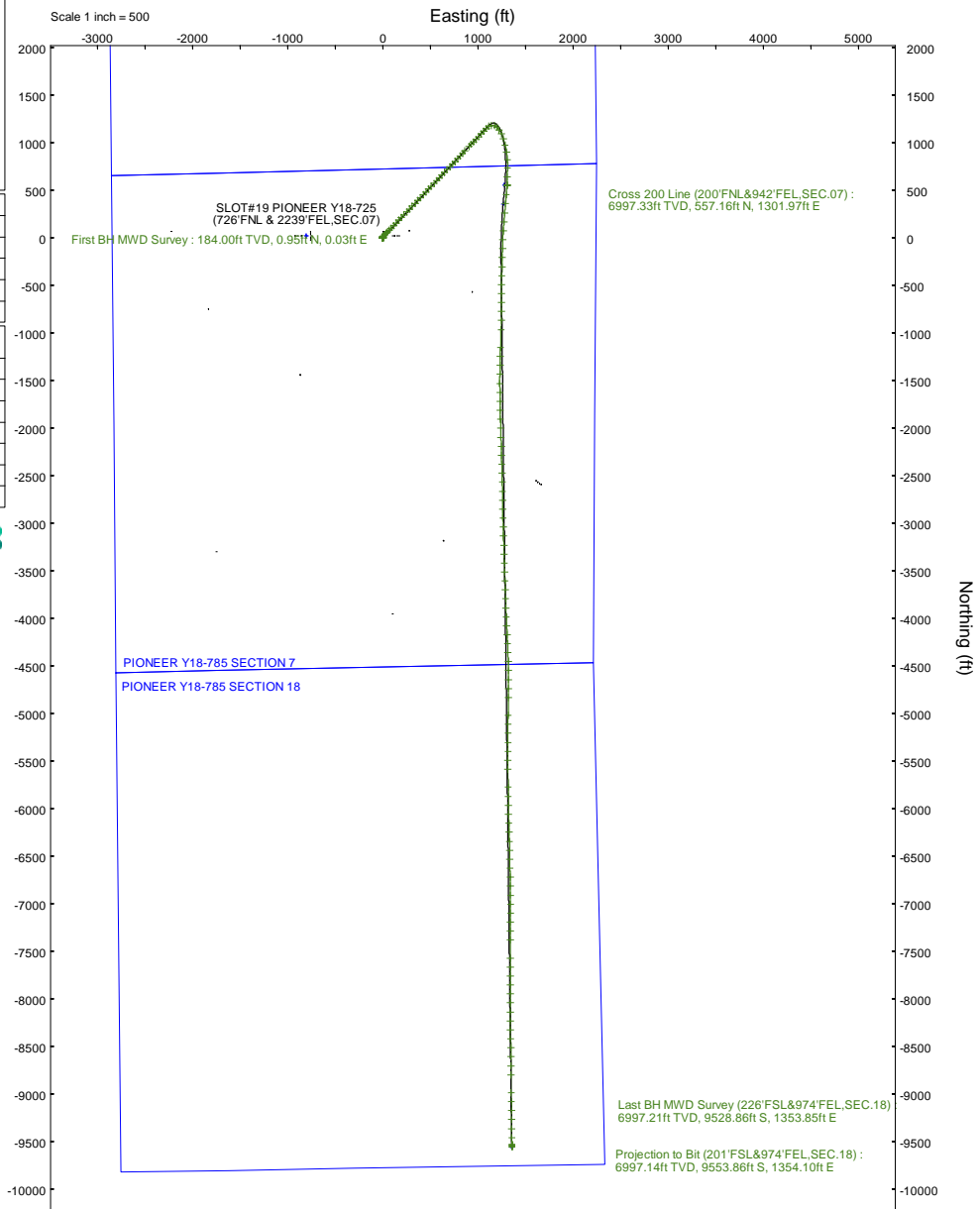
Grid System: NAD83 / Lambert Colorado SP, Northern Zone (501), US feet
 North Reference: Grid north
 Scale: True distance
 Coordinates are in feet referenced to Slot
 Depths are in feet
 Created by: guenaler on 2023-01-25; Database: WA_Denver

Location Information

Facility Name	Grid East (US ft)	Grid North (US ft)	Latitude	Longitude		
SEC.07-T02N-R64W	3252659.032	1301719.599	40°09'29.0880"N	104°35'45.7080"W		
Slot	Local N (ft)	Local E (ft)	Grid East (US ft)	Grid North (US ft)	Latitude	Longitude
SLOT#19 PIONEER Y18-725 (726'FNL & 2239'FEL,SEC.07)	-23.34	925.49	3253584.478	1301696.264	40°09'28.7640"N	104°35'33.7920"W
(4884'GL+30'KB@4914'RKB) (RKB) to Mud line (At Slot: SLOT#19 PIONEER Y18-725 (726'FNL & 2239'FEL,SEC.07))					4914ft	
Mean Sea Level to Mud line (At Slot: SLOT#19 PIONEER Y18-725 (726'FNL & 2239'FEL,SEC.07))					0ft	
(4884'GL+30'KB@4914'RKB) (RKB) to Mean Sea Level					4914ft	



Northing





Actual Wellpath Report

PIONEER Y18-725 AWP

Page 1 of 7



REFERENCE WELLPATH IDENTIFICATION

Operator	NOBLE ENERGY, INC	Well	PIONEER Y18-725
Field	WELD COUNTY (NOBLE NAD 83 GRID)	API	05-123-48767
Facility	SEC.07-T02N-R64W	Wellbore	PIONEER Y18-725 AWB
Slot	SLOT#19 PIONEER Y18-725 (726'FNL & 2239'FEL,SEC.07)		

REPORT SETUP INFORMATION

Projection System	NAD83 / Lambert Colorado SP, Northern Zone (501), US feet	Software System	WellArchitect® 6.0
North Reference	Grid	User	Guenaler
Scale	0.999958	Report Generated	1/25/2023 at 12:02:44 PM
Convergence at slot	0.59° East	Database	WA_Denver

WELLPATH LOCATION

	Local coordinates		Grid coordinates		Geographic coordinates	
	North[ft]	East[ft]	Easting[US ft]	Northing[US ft]	Latitude	Longitude
Slot Location	-23.34	925.49	3253584.48	1301696.26	40.1579900°	-104.5927200°
Facility Reference Pt			3252659.03	1301719.60	40.1580800°	-104.5960300°
Field Reference Pt			3000000.00	4454105.15	48.7761986°	-105.5000000°

WELLPATH DATUM

Calculation method	Minimum curvature	(4884'GL+30'KB@4914'RKB) (RKB) to Facility Vertical Datum	4914.00ft
Horizontal Reference Pt	Slot	(4884'GL+30'KB@4914'RKB) (RKB) to Mean Sea Level	4914.00ft
Vertical Reference Pt	(4884'GL+30'KB@4914'RKB) (RKB)	(4884'GL+30'KB@4914'RKB) (RKB) to Mud Line at Slot (SLOT#19 PIONEER Y18-725 (726'FNL & 2239'FEL,SEC.07))	4914.00ft
MD Reference Pt	(4884'GL+30'KB@4914'RKB) (RKB)	Section Origin	N 0.00, E 0.00 ft
Field Vertical Reference	Mean Sea Level	Section Azimuth	171.95°



Actual Wellpath Report

PIONEER Y18-725 AWP

Page 2 of 7



REFERENCE WELLPATH IDENTIFICATION			
Operator	NOBLE ENERGY, INC	Well	PIONEER Y18-725
Field	WELD COUNTY (NOBLE NAD 83 GRID)	API	05-123-48767
Facility	SEC.07-T02N-R64W	Wellbore	PIONEER Y18-725 AWP
Slot	SLOT#19 PIONEER Y18-725 (726'FNL & 2239'FEL,SEC.07)		

WELLPATH DATA (186 stations)										
MD [ft]	Inclination [°]	Azimuth [°]	TVD [ft]	Vert Sect [ft]	North [ft]	East [ft]	Latitude	Longitude	DLS [°/100ft]	Comments
0.00	0.000	2.070	0.00	0.00	0.00	0.00	40.1579900	-104.5927200	0.00	
184.00	0.590	2.070	184.00	-0.93	0.95	0.03	40.1579926	-104.5927198	0.32	First BH MWD Survey
275.00	0.310	59.570	274.99	-1.49	1.54	0.26	40.1579942	-104.5927190	0.55	
369.00	0.300	335.250	368.99	-1.82	1.89	0.38	40.1579952	-104.5927186	0.44	
463.00	0.250	295.900	462.99	-2.17	2.20	0.09	40.1579960	-104.5927196	0.20	
558.00	0.370	210.060	557.99	-2.04	2.03	-0.25	40.1579956	-104.5927208	0.45	
653.00	0.360	208.510	652.99	-1.56	1.50	-0.54	40.1579941	-104.5927219	0.01	
748.00	0.580	213.830	747.99	-0.97	0.84	-0.95	40.1579923	-104.5927234	0.24	
842.00	0.310	247.520	841.98	-0.55	0.35	-1.45	40.1579910	-104.5927252	0.39	
936.00	0.410	248.470	935.98	-0.41	0.13	-2.00	40.1579904	-104.5927272	0.11	
1031.00	0.490	278.840	1030.98	-0.45	0.07	-2.72	40.1579903	-104.5927297	0.26	
1126.00	0.600	277.390	1125.97	-0.70	0.19	-3.61	40.1579906	-104.5927329	0.12	
1220.00	0.380	289.760	1219.97	-0.97	0.36	-4.40	40.1579911	-104.5927357	0.26	
1314.00	0.630	257.530	1313.97	-1.08	0.35	-5.19	40.1579911	-104.5927386	0.39	
1409.00	0.580	287.980	1408.96	-1.25	0.39	-6.16	40.1579912	-104.5927420	0.34	
1504.00	0.590	280.190	1503.96	-1.61	0.62	-7.10	40.1579919	-104.5927454	0.08	
1598.00	0.340	248.610	1597.95	-1.70	0.61	-7.84	40.1579919	-104.5927480	0.37	
1693.00	0.410	270.160	1692.95	-1.68	0.51	-8.44	40.1579916	-104.5927502	0.16	
1787.00	0.610	270.560	1786.95	-1.81	0.51	-9.27	40.1579917	-104.5927532	0.21	
1882.00	0.670	304.250	1881.94	-2.26	0.83	-10.24	40.1579926	-104.5927566	0.40	
1976.00	0.620	326.340	1975.94	-3.08	1.56	-10.98	40.1579946	-104.5927592	0.27	
2071.00	0.920	331.460	2070.93	-4.26	2.66	-11.62	40.1579976	-104.5927615	0.32	
2165.00	1.020	322.180	2164.92	-5.70	3.98	-12.50	40.1580013	-104.5927646	0.20	
2259.00	2.030	32.940	2258.89	-7.68	6.04	-12.11	40.1580069	-104.5927631	2.07	
2354.00	3.940	43.060	2353.75	-11.00	9.84	-8.96	40.1580173	-104.5927517	2.08	
2448.00	6.130	44.060	2447.39	-16.11	15.81	-3.27	40.1580335	-104.5927311	2.33	
2543.00	8.250	44.960	2541.63	-23.33	24.28	5.08	40.1580565	-104.5927009	2.23	
2637.00	10.550	44.420	2634.37	-32.63	35.20	15.87	40.1580862	-104.5926619	2.45	
2732.00	12.270	44.020	2727.48	-44.13	48.67	28.97	40.1581228	-104.5926146	1.81	
2826.00	14.600	44.400	2818.91	-57.49	64.32	44.20	40.1581653	-104.5925595	2.48	
2921.00	18.050	44.700	2910.06	-73.70	83.34	62.94	40.1582170	-104.5924918	3.63	
3015.00	20.420	44.820	2998.81	-92.42	105.32	84.74	40.1582767	-104.5924130	2.52	
3110.00	23.020	44.410	3087.06	-113.75	130.35	109.43	40.1583447	-104.5923238	2.74	
3204.00	25.210	43.860	3172.85	-137.30	157.92	136.16	40.1584196	-104.5922271	2.34	
3299.00	25.290	43.920	3258.77	-162.28	187.12	164.26	40.1584990	-104.5921255	0.09	
3393.00	24.850	44.000	3343.91	-186.80	215.80	191.91	40.1585769	-104.5920256	0.47	
3487.00	25.630	44.020	3428.94	-211.44	244.62	219.76	40.1586553	-104.5919249	0.83	
3582.00	25.680	43.820	3514.57	-236.78	274.25	248.29	40.1587358	-104.5918217	0.11	
3676.00	26.090	44.150	3599.14	-262.03	303.78	276.79	40.1588160	-104.5917187	0.46	
3770.00	26.120	44.140	3683.55	-287.38	333.46	305.59	40.1588967	-104.5916145	0.03	
3865.00	26.060	43.880	3768.87	-313.07	363.51	334.62	40.1589784	-104.5915096	0.14	
3959.00	26.140	43.780	3853.29	-338.60	393.34	363.26	40.1590595	-104.5914061	0.10	
4054.00	26.230	43.890	3938.54	-364.48	423.58	392.29	40.1591416	-104.5913011	0.11	
4148.00	26.220	42.710	4022.86	-390.42	453.81	420.78	40.1592238	-104.5911981	0.55	
4243.00	25.740	44.040	4108.26	-416.37	484.06	449.35	40.1593060	-104.5910947	0.79	



Actual Wellpath Report

PIONEER Y18-725 AWP

Page 3 of 7



REFERENCE WELLPATH IDENTIFICATION			
Operator	NOBLE ENERGY, INC	Well	PIONEER Y18-725
Field	WELD COUNTY (NOBLE NAD 83 GRID)	API	05-123-48767
Facility	SEC.07-T02N-R64W	Wellbore	PIONEER Y18-725 AWP
Slot	SLOT#19 PIONEER Y18-725 (726'FNL & 2239'FEL,SEC.07)		

WELLPATH DATA (186 stations) † = interpolated, ‡ = extrapolated station										
MD [ft]	Inclination [°]	Azimuth [°]	TVD [ft]	Vert Sect [ft]	North [ft]	East [ft]	Latitude	Longitude	DLS [°/100ft]	Comments
4337.00	25.460	43.710	4193.04	-441.42	513.33	477.51	40.1593856	-104.5909929	0.33	
4431.00	25.640	43.650	4277.84	-466.53	542.65	505.50	40.1594653	-104.5908917	0.19	
4526.00	25.790	43.830	4363.44	-492.03	572.43	534.00	40.1595462	-104.5907886	0.18	
4620.00	25.440	43.460	4448.20	-517.22	601.84	562.05	40.1596262	-104.5906872	0.41	
4714.00	25.710	43.600	4532.99	-542.43	631.26	590.00	40.1597061	-104.5905862	0.29	
4809.00	25.770	43.560	4618.56	-568.04	661.15	618.44	40.1597874	-104.5904833	0.07	
4903.00	24.690	43.550	4703.59	-592.93	690.19	646.05	40.1598663	-104.5903835	1.15	
4998.00	24.590	43.960	4789.94	-617.42	718.79	673.44	40.1599441	-104.5902844	0.21	
5092.00	24.590	43.430	4875.42	-641.64	747.08	700.46	40.1600209	-104.5901867	0.23	
5186.00	24.370	43.670	4960.97	-665.83	775.31	727.30	40.1600977	-104.5900897	0.26	
5281.00	24.880	43.320	5047.33	-690.45	804.02	754.54	40.1601757	-104.5899912	0.56	
5375.00	24.510	43.310	5132.73	-714.97	832.60	781.48	40.1602534	-104.5898937	0.39	
5469.00	23.770	43.290	5218.51	-738.98	860.57	807.85	40.1603294	-104.5897984	0.79	
5564.00	23.840	43.480	5305.43	-762.89	888.44	834.19	40.1604052	-104.5897031	0.11	
5658.00	21.680	43.190	5392.10	-785.58	914.89	859.15	40.1604771	-104.5896129	2.30	
5846.00	19.040	43.680	5568.34	-826.32	962.39	904.10	40.1606062	-104.5894503	1.41	
5941.00	20.630	43.270	5657.70	-846.38	985.79	926.27	40.1606698	-104.5893701	1.68	
6035.00	22.060	43.580	5745.25	-867.69	1010.63	949.80	40.1607373	-104.5892851	1.53	
6129.00	23.470	43.430	5831.93	-890.30	1037.01	974.83	40.1608090	-104.5891945	1.50	
6223.00	25.020	43.680	5917.63	-914.28	1064.99	1001.43	40.1608851	-104.5890983	1.65	
6318.00	25.430	43.540	6003.58	-939.39	1094.30	1029.36	40.1609647	-104.5889973	0.44	
6412.00	25.110	43.950	6088.58	-964.21	1123.29	1057.10	40.1610435	-104.5888970	0.39	
6506.00	23.930	43.110	6174.10	-988.45	1151.57	1083.97	40.1611204	-104.5887998	1.31	
6601.00	18.430	58.390	6262.72	-1006.56	1173.54	1109.97	40.1611800	-104.5887060	8.16	
6695.00	19.290	80.840	6351.79	-1012.81	1183.81	1137.99	40.1612074	-104.5886054	7.73	
6789.00	19.330	108.810	6440.69	-1006.07	1181.26	1168.11	40.1611995	-104.5884978	9.75	
6884.00	19.580	135.040	6530.44	-986.20	1164.90	1194.29	40.1611539	-104.5884047	9.13	
6978.00	25.620	141.570	6617.19	-956.04	1137.80	1218.08	40.1610788	-104.5883206	6.95	
7073.00	33.910	154.010	6699.66	-913.00	1097.78	1242.52	40.1609683	-104.5882346	10.84	
7167.00	42.750	163.190	6773.39	-856.36	1043.52	1263.30	40.1608188	-104.5881623	11.16	
7261.00	49.820	167.110	6838.32	-788.95	977.88	1280.56	40.1606381	-104.5881029	8.10	
7356.00	57.630	168.900	6894.49	-712.60	903.02	1296.40	40.1604322	-104.5880490	8.36	
7450.00	65.140	177.020	6939.53	-630.26	821.25	1306.29	40.1602075	-104.5880166	11.01	
7544.00	74.280	181.220	6972.11	-542.91	733.21	1307.55	40.1599658	-104.5880154	10.59	
7638.00	82.460	181.160	6991.04	-452.11	641.24	1305.64	40.1597134	-104.5880256	8.70	
7722.45†	89.002	183.829	6997.33	-369.37	557.16	1301.97	40.1594827	-104.5880418	8.36	Cross 200 Line (200'FNL&942'FEL,SEC.07)
7724.00†	89.122	183.877	6997.35	-367.86	555.61	1301.86	40.1594784	-104.5880423	8.36	Shallowest MD for Perf
7733.00	89.820	184.160	6997.43	-359.05	546.64	1301.23	40.1594538	-104.5880448	8.36	
7827.00	89.570	184.470	6997.94	-267.24	452.90	1294.16	40.1591967	-104.5880736	0.42	
7921.00	90.340	185.510	6998.01	-175.66	359.26	1285.98	40.1589399	-104.5881063	1.38	
8016.00	90.460	184.640	6997.35	-83.15	264.64	1277.58	40.1586804	-104.5881398	0.92	
8110.00	89.780	184.640	6997.15	8.56	170.95	1269.98	40.1584235	-104.5881705	0.72	
8205.00	90.030	184.080	6997.31	101.34	76.22	1262.75	40.1581637	-104.5881998	0.65	
8300.00	89.660	181.980	6997.56	194.56	-18.64	1257.73	40.1579034	-104.5882213	2.24	
8394.00	89.850	181.580	6997.97	287.18	-112.59	1254.81	40.1576456	-104.5882352	0.47	



Actual Wellpath Report

PIONEER Y18-725 AWP

Page 4 of 7



REFERENCE WELLPATH IDENTIFICATION			
Operator	NOBLE ENERGY, INC	Well	PIONEER Y18-725
Field	WELD COUNTY (NOBLE NAD 83 GRID)	API	05-123-48767
Facility	SEC.07-T02N-R64W	Wellbore	PIONEER Y18-725 AWP
Slot	SLOT#19 PIONEER Y18-725 (726'FNL & 2239'FEL,SEC.07)		

WELLPATH DATA (186 stations)										
MD [ft]	Inclination [°]	Azimuth [°]	TVD [ft]	Vert Sect [ft]	North [ft]	East [ft]	Latitude	Longitude	DLS [°/100ft]	Comments
8488.00	89.320	181.870	6998.65	379.81	-206.55	1251.98	40.1573878	-104.5882487	0.64	
8583.00	89.540	181.620	6999.59	473.42	-301.50	1249.09	40.1571273	-104.5882626	0.35	
8677.00	89.910	182.140	7000.04	566.01	-395.45	1246.01	40.1568695	-104.5882771	0.68	
8772.00	89.780	180.190	7000.30	659.78	-490.42	1244.08	40.1566088	-104.5882875	2.06	
8866.00	89.780	179.630	7000.66	752.88	-584.42	1244.22	40.1563508	-104.5882904	0.60	
8960.00	90.650	180.420	7000.31	845.94	-678.42	1244.18	40.1560928	-104.5882940	1.25	
9054.00	90.090	180.540	6999.70	938.90	-772.41	1243.39	40.1558348	-104.5883003	0.61	
9149.00	89.850	179.910	6999.75	1032.91	-867.41	1243.02	40.1555741	-104.5883051	0.71	
9243.00	91.660	183.610	6998.51	1125.51	-961.34	1240.14	40.1553163	-104.5883189	4.38	
9432.00	90.430	180.340	6995.06	1311.57	-1150.17	1233.63	40.1547982	-104.5883491	1.85	
9526.00	90.310	181.180	6994.46	1404.45	-1244.15	1232.38	40.1545403	-104.5883570	0.90	
9621.00	90.520	182.160	6993.77	1498.09	-1339.11	1229.61	40.1542797	-104.5883704	1.05	
9715.00	90.120	180.910	6993.24	1590.77	-1433.07	1227.09	40.1540219	-104.5883829	1.40	
9810.00	89.780	179.610	6993.33	1684.77	-1528.07	1226.66	40.1537611	-104.5883879	1.41	
9904.00	89.660	179.560	6993.79	1777.94	-1622.07	1227.34	40.1535031	-104.5883889	0.14	
9998.00	89.600	178.790	6994.39	1871.19	-1716.05	1228.70	40.1532451	-104.5883876	0.82	
10093.00	89.630	178.680	6995.03	1965.52	-1811.03	1230.79	40.1529843	-104.5883836	0.12	
10188.00	89.230	178.160	6995.98	2059.91	-1905.99	1233.41	40.1527236	-104.5883777	0.69	
10282.00	89.720	178.590	6996.84	2153.32	-1999.95	1236.08	40.1524656	-104.5883716	0.69	
10377.00	89.350	177.710	6997.61	2247.76	-2094.89	1239.14	40.1522049	-104.5883641	1.00	
10471.00	89.720	178.630	6998.37	2341.20	-2188.84	1242.15	40.1519469	-104.5883568	1.05	
10566.00	89.570	178.470	6998.96	2435.57	-2283.81	1244.55	40.1516862	-104.5883517	0.23	
10660.00	89.880	178.450	6999.41	2528.96	-2377.77	1247.08	40.1514282	-104.5883461	0.33	
10755.00	89.480	178.080	6999.94	2623.38	-2472.73	1249.95	40.1511675	-104.5883394	0.57	
10849.00	89.780	178.510	7000.55	2716.81	-2566.68	1252.75	40.1509095	-104.5883328	0.56	
10944.00	91.080	180.230	6999.84	2811.00	-2661.67	1253.79	40.1506488	-104.5883326	2.27	
11038.00	90.220	178.700	6998.77	2904.19	-2755.65	1254.67	40.1503908	-104.5883329	1.87	
11133.00	90.030	178.250	6998.56	2998.57	-2850.62	1257.20	40.1501300	-104.5883273	0.51	
11228.00	90.150	178.650	6998.41	3092.96	-2945.59	1259.77	40.1498693	-104.5883216	0.44	
11322.00	90.400	178.170	6997.96	3186.36	-3039.55	1262.38	40.1496113	-104.5883158	0.58	
11416.00	90.180	178.210	6997.49	3279.80	-3133.50	1265.35	40.1493533	-104.5883086	0.24	
11511.00	90.120	178.410	6997.24	3374.22	-3228.46	1268.15	40.1490926	-104.5883021	0.22	
11605.00	90.370	177.940	6996.84	3467.66	-3322.41	1271.14	40.1488346	-104.5882948	0.57	
11700.00	90.310	178.740	6996.27	3562.07	-3417.37	1273.89	40.1485739	-104.5882885	0.84	
11794.00	89.910	177.590	6996.09	3655.52	-3511.32	1276.90	40.1483159	-104.5882811	1.30	
11888.00	90.180	178.270	6996.02	3749.00	-3605.25	1280.30	40.1480580	-104.5882725	0.78	
11982.00	89.750	177.740	6996.07	3842.48	-3699.20	1283.57	40.1478000	-104.5882642	0.73	
12077.00	89.720	177.820	6996.51	3936.99	-3794.13	1287.25	40.1475394	-104.5882545	0.09	
12171.00	89.600	177.440	6997.07	4030.52	-3888.04	1291.14	40.1472815	-104.5882441	0.42	
12265.00	90.180	178.480	6997.25	4124.01	-3981.98	1294.48	40.1470235	-104.5882356	1.27	
12360.00	89.320	176.830	6997.67	4218.53	-4076.90	1298.37	40.1467629	-104.5882252	1.96	
12454.00	89.820	177.100	6998.37	4312.17	-4170.76	1303.35	40.1465051	-104.5882108	0.60	
12548.00	89.970	178.020	6998.54	4405.72	-4264.68	1307.35	40.1462472	-104.5882000	0.99	
12642.00	89.170	177.170	6999.25	4499.26	-4358.59	1311.29	40.1459893	-104.5881893	1.24	
12737.00	89.970	178.170	6999.96	4593.78	-4453.51	1315.16	40.1457287	-104.5881790	1.35	

REFERENCE WELLPATH IDENTIFICATION			
Operator	NOBLE ENERGY, INC	Well	PIONEER Y18-725
Field	WELD COUNTY (NOBLE NAD 83 GRID)	API	05-123-48767
Facility	SEC.07-T02N-R64W	Wellbore	PIONEER Y18-725 AWB
Slot	SLOT#19 PIONEER Y18-725 (726'FNL & 2239'FEL,SEC.07)		

WELLPATH DATA (186 stations)										
MD [ft]	Inclination [°]	Azimuth [°]	TVD [ft]	Vert Sect [ft]	North [ft]	East [ft]	Latitude	Longitude	DLS [°/100ft]	Comments
12831.00	90.220	180.190	6999.81	4687.03	-4547.49	1316.50	40.1454707	-104.5881776	2.17	
12925.00	90.490	180.360	6999.22	4780.03	-4641.49	1316.05	40.1452127	-104.5881827	0.34	
13019.00	90.650	180.040	6998.29	4873.06	-4735.48	1315.72	40.1449547	-104.5881873	0.38	
13114.00	90.030	180.290	6997.73	4967.08	-4830.48	1315.45	40.1446939	-104.5881918	0.70	
13302.00	90.340	180.830	6997.12	5152.96	-5018.47	1313.61	40.1441780	-104.5882053	0.33	
13397.00	90.060	179.860	6996.79	5246.94	-5113.47	1313.04	40.1439172	-104.5882108	1.06	
13491.00	90.030	180.110	6996.71	5340.02	-5207.46	1313.06	40.1436592	-104.5882142	0.27	
13586.00	90.150	179.950	6996.56	5434.08	-5302.46	1313.01	40.1433984	-104.5882179	0.21	
13680.00	90.180	180.400	6996.29	5527.11	-5396.46	1312.73	40.1431404	-104.5882223	0.48	
13775.00	90.490	180.520	6995.74	5621.06	-5491.46	1311.96	40.1428797	-104.5882286	0.35	
13869.00	89.850	179.060	6995.46	5714.18	-5585.45	1312.31	40.1426217	-104.5882308	1.70	
14058.00	89.940	179.950	6995.81	5901.54	-5774.45	1313.94	40.1421029	-104.5882319	0.47	
14152.00	90.490	179.900	6995.45	5994.63	-5868.44	1314.06	40.1418449	-104.5882349	0.59	
14247.00	89.910	178.500	6995.12	6088.86	-5963.43	1315.39	40.1415841	-104.5882337	1.60	
14341.00	90.150	178.360	6995.07	6182.26	-6057.40	1317.97	40.1413261	-104.5882279	0.30	
14436.00	89.910	178.110	6995.02	6276.69	-6152.35	1320.89	40.1410654	-104.5882209	0.36	
14530.00	89.820	178.100	6995.24	6370.15	-6246.30	1324.00	40.1408074	-104.5882133	0.10	
14625.00	90.220	178.200	6995.21	6464.60	-6341.25	1327.07	40.1405467	-104.5882058	0.43	
14719.00	89.880	179.160	6995.13	6557.95	-6435.22	1329.23	40.1402887	-104.5882015	1.08	
14814.00	89.320	178.440	6995.79	6652.27	-6530.20	1331.22	40.1400279	-104.5881979	0.96	
14908.00	89.780	178.950	6996.53	6745.61	-6624.17	1333.36	40.1397699	-104.5881937	0.73	
15003.00	89.690	178.870	6996.97	6839.91	-6719.15	1335.17	40.1395092	-104.5881907	0.13	
15097.00	89.750	177.240	6997.43	6933.37	-6813.09	1338.36	40.1392512	-104.5881828	1.74	
15192.00	90.220	180.570	6997.45	7027.66	-6908.06	1340.18	40.1389905	-104.5881798	3.54	
15286.00	89.690	180.010	6997.53	7120.67	-7002.06	1339.70	40.1387325	-104.5881849	0.82	
15380.00	90.180	180.360	6997.63	7213.70	-7096.06	1339.40	40.1384745	-104.5881895	0.64	
15475.00	90.340	181.220	6997.20	7307.57	-7191.05	1338.09	40.1382138	-104.5881976	0.92	
15569.00	89.320	178.980	6997.48	7400.61	-7285.04	1337.92	40.1379558	-104.5882017	2.62	
15664.00	90.090	180.290	6997.97	7494.75	-7380.04	1338.53	40.1376950	-104.5882030	1.60	
15853.00	90.180	180.510	6997.53	7681.70	-7569.03	1337.21	40.1371763	-104.5882147	0.13	
15947.00	90.310	179.890	6997.12	7774.73	-7663.03	1336.88	40.1369183	-104.5882193	0.67	
16041.00	90.400	180.310	6996.54	7867.78	-7757.03	1336.72	40.1366603	-104.5882234	0.46	
16136.00	89.910	179.950	6996.28	7961.81	-7852.03	1336.50	40.1363995	-104.5882276	0.64	
16230.00	89.880	179.970	6996.46	8054.89	-7946.03	1336.57	40.1361415	-104.5882308	0.04	
16324.00	90.220	180.370	6996.37	8147.93	-8040.02	1336.29	40.1358835	-104.5882353	0.56	
16419.00	90.340	180.510	6995.91	8241.88	-8135.02	1335.56	40.1356228	-104.5882414	0.19	
16513.00	89.820	178.980	6995.78	8335.01	-8229.02	1335.98	40.1353648	-104.5882434	1.72	
16608.00	89.820	178.820	6996.08	8429.31	-8324.00	1337.80	40.1351040	-104.5882403	0.17	
16702.00	88.550	178.670	6997.41	8522.64	-8417.96	1339.86	40.1348460	-104.5882364	1.36	
16797.00	90.220	179.380	6998.43	8616.91	-8512.94	1341.47	40.1345853	-104.5882341	1.91	
16891.00	90.340	179.640	6997.97	8710.09	-8606.94	1342.28	40.1343272	-104.5882347	0.30	
16986.00	90.060	179.490	6997.64	8804.25	-8701.93	1343.00	40.1340665	-104.5882356	0.33	
17080.00	90.120	179.260	6997.50	8897.47	-8795.93	1344.03	40.1338084	-104.5882354	0.25	
17269.00	89.970	179.520	6997.35	9084.88	-8984.92	1346.04	40.1332896	-104.5882352	0.16	
17363.00	90.150	178.980	6997.25	9178.11	-9078.91	1347.27	40.1330316	-104.5882342	0.61	

REFERENCE WELLPATH IDENTIFICATION

Operator	NOBLE ENERGY, INC	Well	PIONEER Y18-725
Field	WELD COUNTY (NOBLE NAD 83 GRID)	API	05-123-48767
Facility	SEC.07-T02N-R64W	Wellbore	PIONEER Y18-725 AWB
Slot	SLOT#19 PIONEER Y18-725 (726'FNL & 2239'FEL,SEC.07)		

WELLPATH DATA (186 stations) † = interpolated, ‡ = extrapolated station

MD [ft]	Inclination [°]	Azimuth [°]	TVD [ft]	Vert Sect [ft]	North [ft]	East [ft]	Latitude	Longitude	DLS [°/100ft]	Comments
17458.00	89.780	179.380	6997.31	9272.36	-9173.90	1348.63	40.1327708	-104.5882329	0.57	
17552.00	90.060	179.160	6997.44	9365.59	-9267.89	1349.82	40.1325128	-104.5882320	0.38	
17646.00	90.000	179.060	6997.39	9458.86	-9361.88	1351.28	40.1322548	-104.5882303	0.12	
17741.00	90.060	179.020	6997.34	9553.13	-9456.87	1352.88	40.1319940	-104.5882281	0.08	
17813.00	90.150	179.430	6997.21	9624.55	-9528.86	1353.85	40.1317964	-104.5882272	0.58	Last BH MWD Survey (226'FSL&974'FEL,SEC.18)
17838.00‡	90.150	179.430	6997.14	9649.34	-9553.86	1354.10	40.1317277	-104.5882273	0.00	Projection to Bit (201'FSL&974'FEL,SEC.18)

TARGETS

Name	TVD [ft]	North [ft]	East [ft]	Grid East [US ft]	Grid North [US ft]	Latitude	Longitude	Shape
PIONEER Y18-785 SECTION 18	-1.00	20.89	-808.06	3252776.45	1301717.15	40.1580700	-104.5956100	polygon
2D Polygon: dimensions not calculated								
PIONEER Y18-785 SECTION 7	-1.00	20.89	-808.06	3252776.45	1301717.15	40.1580700	-104.5956100	polygon
2D Polygon: dimensions not calculated								
PIONEER Y18-725 BHL PLAN (200'FSL & 977'FEL,SEC.18)	6997.00	-9555.11	1351.20	3254935.61	1292141.58	40.1317244	-104.5882377	point
PIONEER Y18-725 LP PLAN (200'FNL & 971'FEL,SEC.07)	6997.00	557.10	1273.09	3254857.52	1302253.34	40.1594833	-104.5881451	point
PIONEER Y18-725 REV-2 AC LP/TPZ PLAN (200'FNL & 965'FEL,SEC.07)	6997.00	557.16	1279.12	3254863.55	1302253.40	40.1594833	-104.5881235	point
PIONEER Y18-725 T1	6997.00	357.71	1261.46	3254845.88	1302053.95	40.1589363	-104.5881941	point
SECTION LINES - SEC.06-T02N-R64W	7997.00	5933.53	-2902.45	3250682.16	1307629.53	40.1743578	-104.6028885	polygon
2D Polygon: dimensions not calculated								
SECTION LINES - SEC.31-T03N-R64W	7997.00	11223.49	-2935.19	3250649.42	1312919.26	40.1888789	-104.6028142	polygon
2D Polygon: dimensions not calculated								

WELLPATH COMPOSITION - Ref Wellbore: PIONEER Y18-725 AWB Ref Wellpath: PIONEER Y18-725 AWP

Start MD [ft]	End MD [ft]	Positional Uncertainty Model	Log Name/Comment	Wellbore	Survey Date
0.00	2165.00	OWSG MWD rev2 (MS+IFR1)	13.5" NaviTrak Surface Survey OWSG MWD rev2 (MS+IFR1) <184'-2165'>	PIONEER Y18-725 AWB	1/10/2023
2165.00	17838.00	OWSG MWD rev2 (MS+IFR1)	8.5" Hole; ATC OWSG MWD rev2 (MS+IFR1) <2259'-17813'>	PIONEER Y18-725 AWB	1/20/2023



Actual Wellpath Report

PIONEER Y18-725 AWP

Page 7 of 7



REFERENCE WELLPATH IDENTIFICATION			
Operator	NOBLE ENERGY, INC	Well	PIONEER Y18-725
Field	WELD COUNTY (NOBLE NAD 83 GRID)	API	05-123-48767
Facility	SEC.07-T02N-R64W	Wellbore	PIONEER Y18-725 AWP
Slot	SLOT#19 PIONEER Y18-725 (726'FNL & 2239'FEL,SEC.07)		

WELLPATH COMMENTS				
MD [ft]	Inclination [°]	Azimuth [°]	TVD [ft]	Comment
184.00	0.590	2.070	184.00	First BH MWD Survey
7722.45	89.002	183.829	6997.33	Cross 200 Line (200'FNL&942'FEL,SEC.07)
7724.00	89.122	183.877	6997.35	Shallowest MD for Perf
17813.00	90.150	179.430	6997.21	Last BH MWD Survey (226'FSL&974'FEL,SEC.18)
17838.00	90.150	179.430	6997.14	Projection to Bit (201'FSL&974'FEL,SEC.18)