



**RADIAL BOND LOG**

Company CHEVRON  
 Well STATE 25  
 Field WATTENBERG  
 County WELD State COLORADO

Location: API #: 0512307692  
 LAT: 40.264991197 X LONG:-104.46643203  
 SEC 32 TWP 4N RGE 63W  
 Permanent Datum GL Elevation 4807'  
 Log Measured From KB  
 Drilling Measured From KB  
 Other Services  
 PERF  
 Elevation  
 K.B. 4,820'  
 D.F. 4,819'  
 G.L. 4,807'

Date	20-OCTOBER-2022		
Run Number	ONE		
Depth Driller	7,430'		
Depth Logger	6,770'		
Bottom Logged Interval	6,758' - 6,758'		
Top Log Interval	5,980' - 5,980'		
Open Hole Size	8.875"		
Type Fluid	WATER		
Density / Viscosity	N/A		
Max. Recorded Temp.	N/A		
Estimated Cement Top	6,520'		
Time Well Ready	ROA		
Time Logger on Bottom	9:20		
Equipment Number	483		
Location	GREELEY, CO		
Recorded By	R. AZEVEDO		
Witnessed By	E. CHAVEZ		

Borehole Record		Tubing Record					
Run Number	Bit	From	To	Size	Weight	From	To

Casing Record	Size	Wgt/Ft	Top	Bottom
Surface String	8-5/8"	24#	SURFACE	547'
Prot. String				
Production String	4-1/2"	11.6#	SURFACE	7425'
Liner				

<<< Fold Here >>>

All interpretations are opinions based on inferences from electrical or other measurements and we cannot and do not guarantee the accuracy or correctness of any interpretation, and we shall not, except in the case of gross or willful negligence on our part, be liable or responsible for any loss, costs, damages, or expenses incurred or sustained by anyone resulting from any interpretation made by any of our officers, agents or employees. These interpretations are also subject to our general terms and conditions set out in our current Price Schedule.

Comments

LOG RAN PER CUSTOMER REQUEST

THANK YOU FOR CHOOSING A-PLUS WELL SERVICE

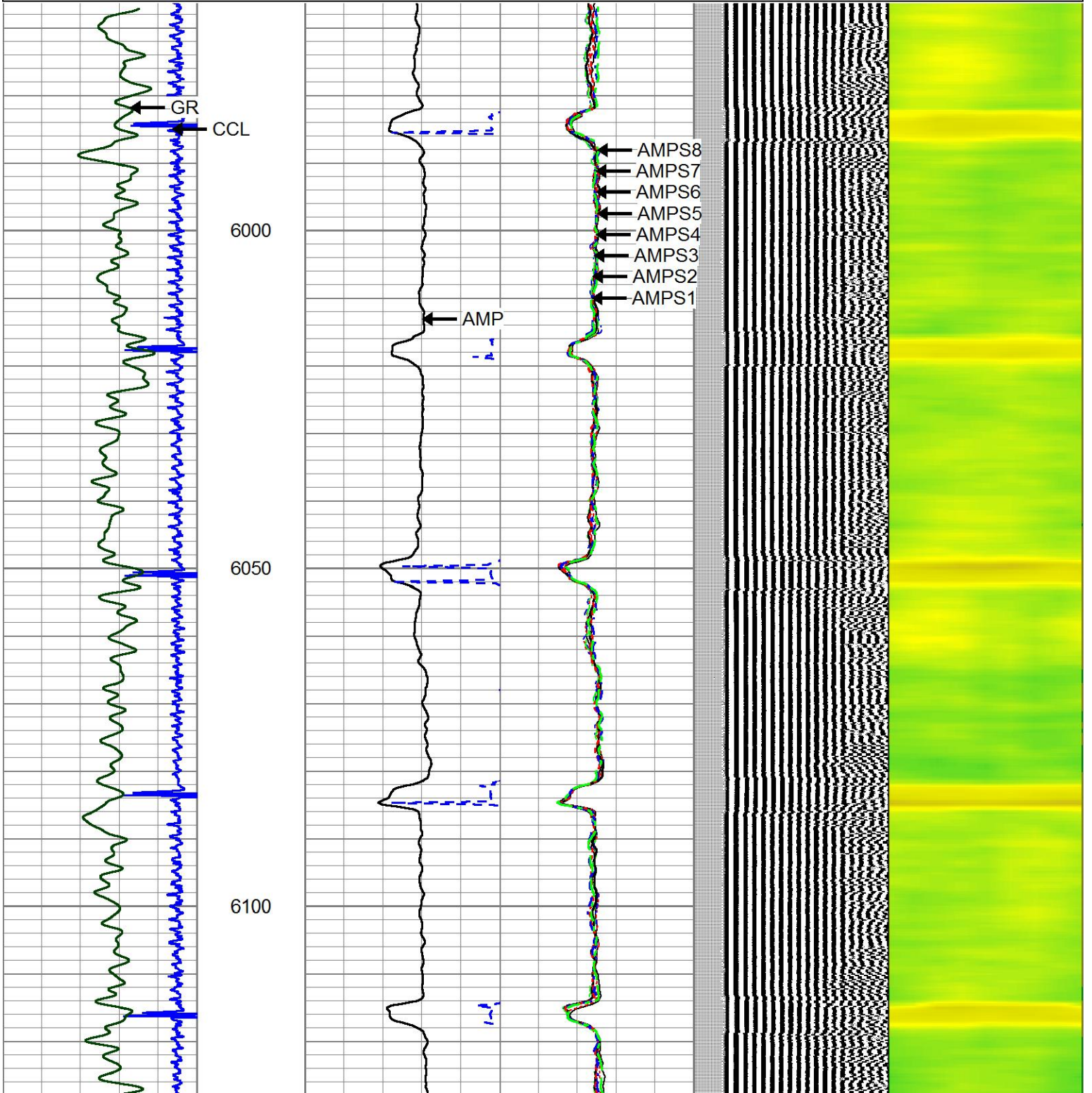


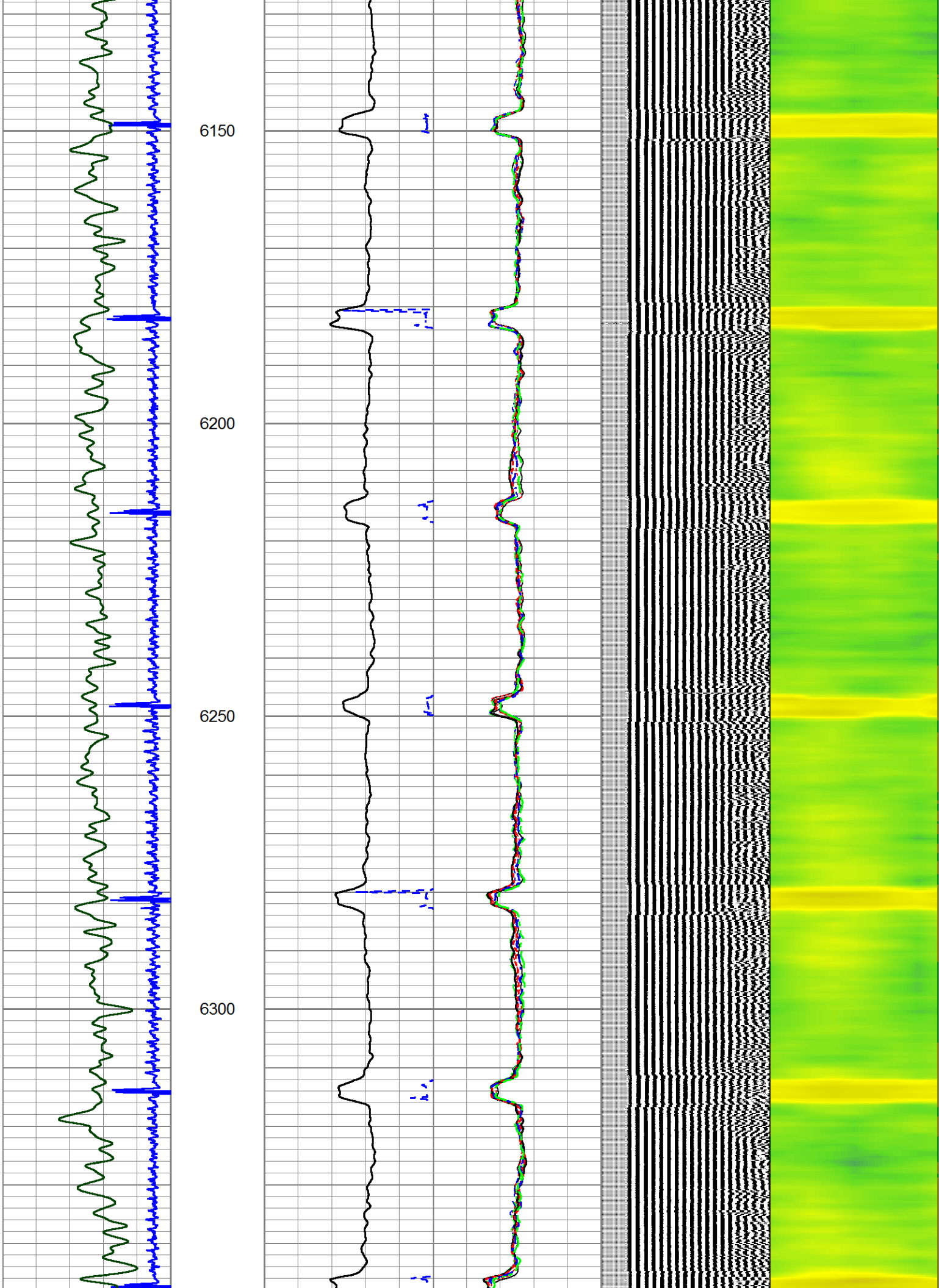
4.5" MAIN PASS

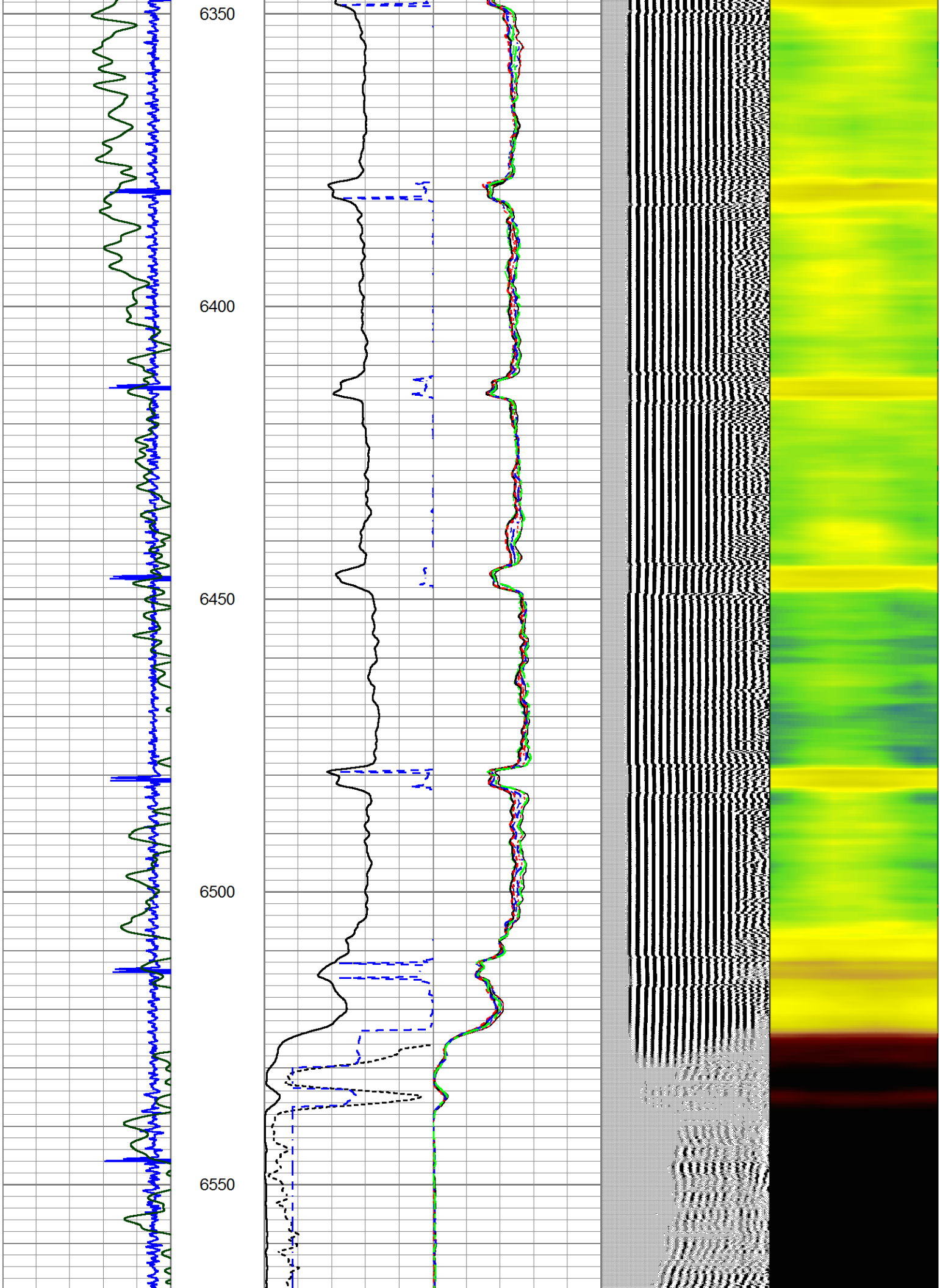
LOG RAN WITH 0 PSI SURFACE INDUCED PRESSURE

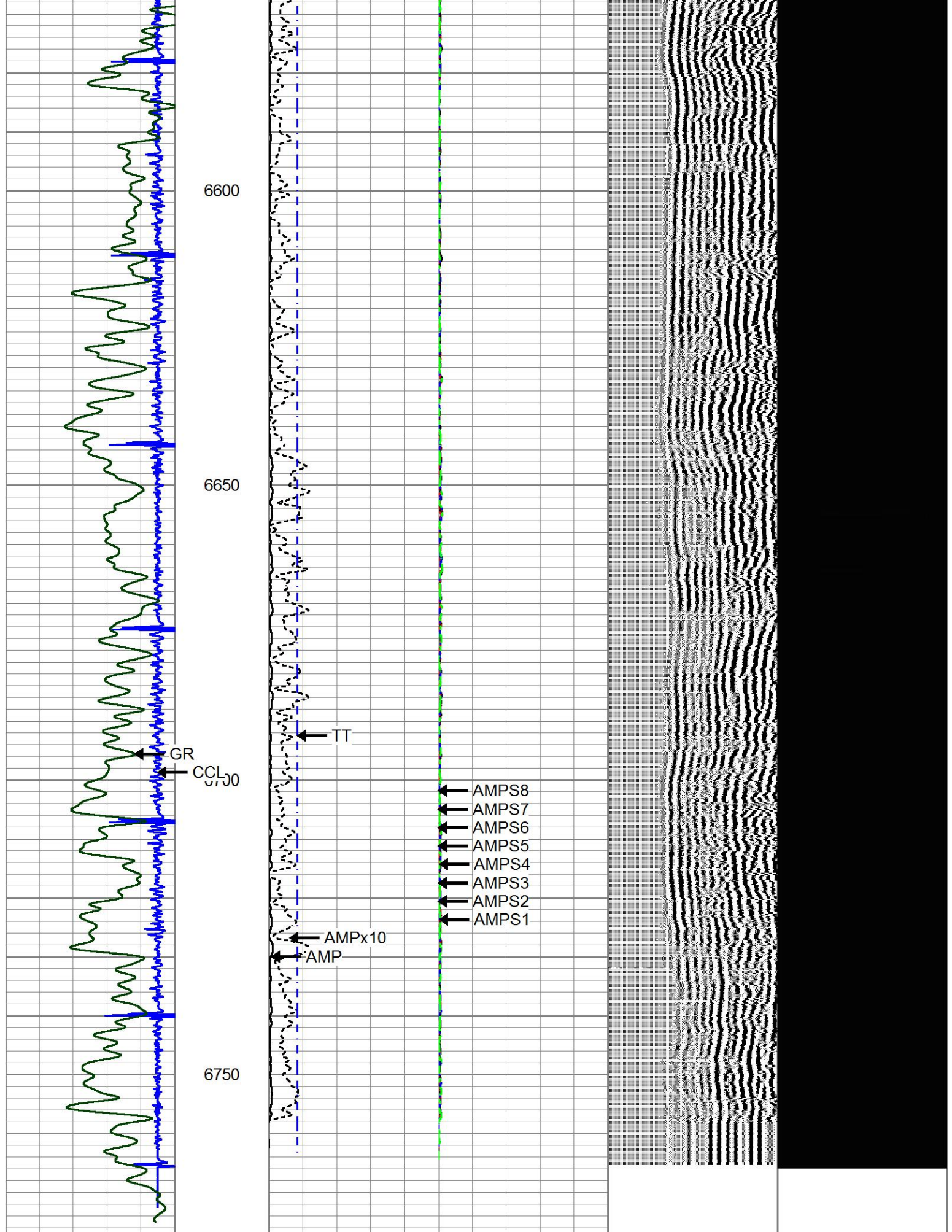
Database File state25\_chevron\_rbl\_10-20-22.db  
 Dataset Pathname pass5  
 Presentation Format prb\_rbt8  
 Dataset Creation Thu Oct 20 09:25:59 2022  
 Charted by Depth in Feet scaled 1:240

-9	CCL	1	0	AMP (mV)	100	0	AMPS1	150	200	VDL (usec)	1200	1	Cement Map	8
0	GR (GAPI)	200	0	AMPx10 (mV)	10	0	AMPS2	150						
			350	TT (usec)	250	0	AMPS3	150						
						0	AMPS4	150						
						0	AMPS5	150						
						0	AMPS6	150						
						0	AMPS7	150						
						0	AMPS8	150						









-9	CCL	1	0	AMP (mV)	100	0	AMPS1	150	200	VDL (usec)	1200	1	Cement Map	8
0	GR (GAPI)	200	0	AMPx10 (mV)	10	0	AMPS2	150						

350	TT (usec)	250	0	AMPS3	150
			0	AMPS4	150
			0	AMPS5	150
			0	AMPS6	150
			0	AMPS7	150
			0	AMPS8	150

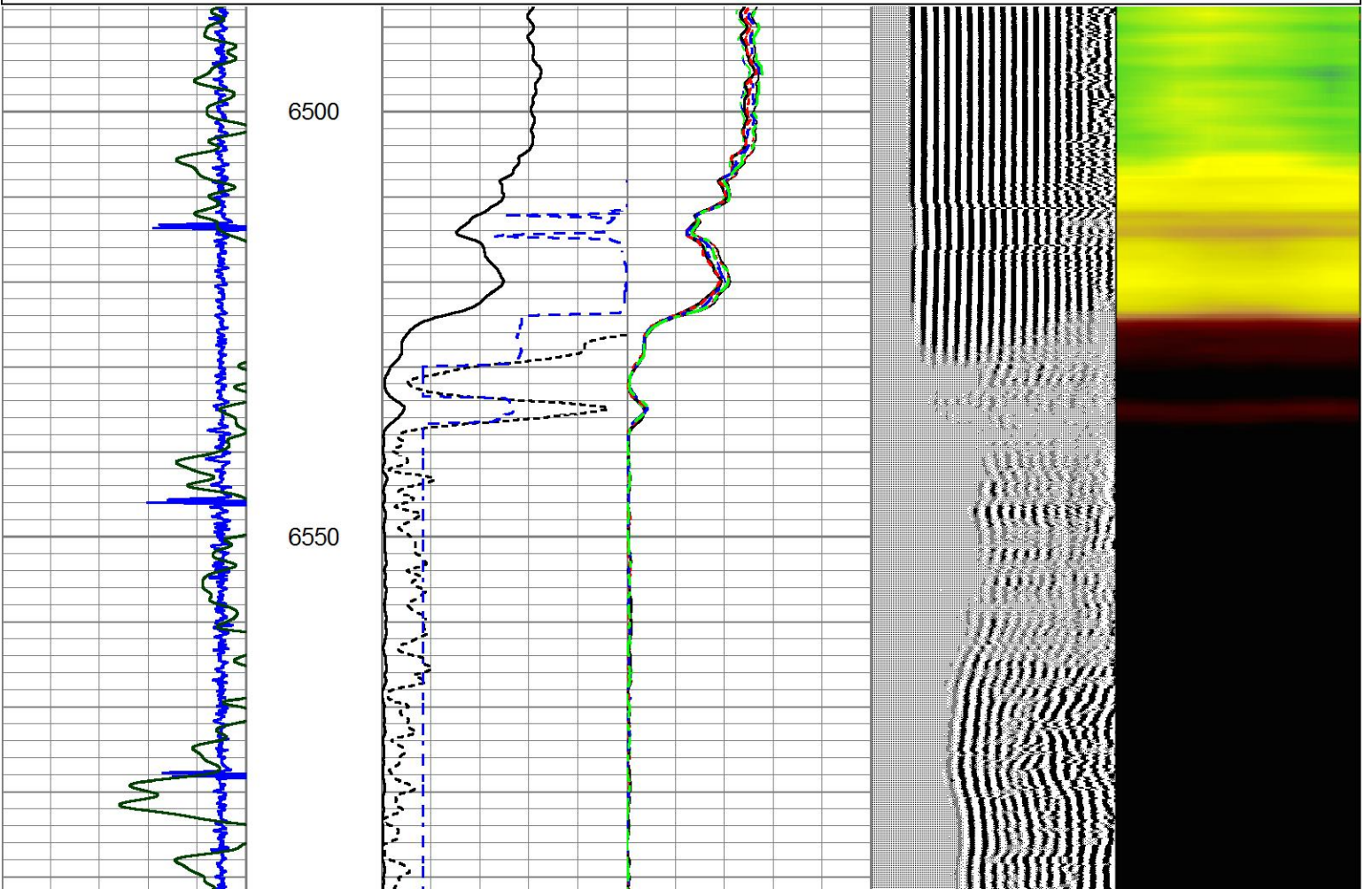


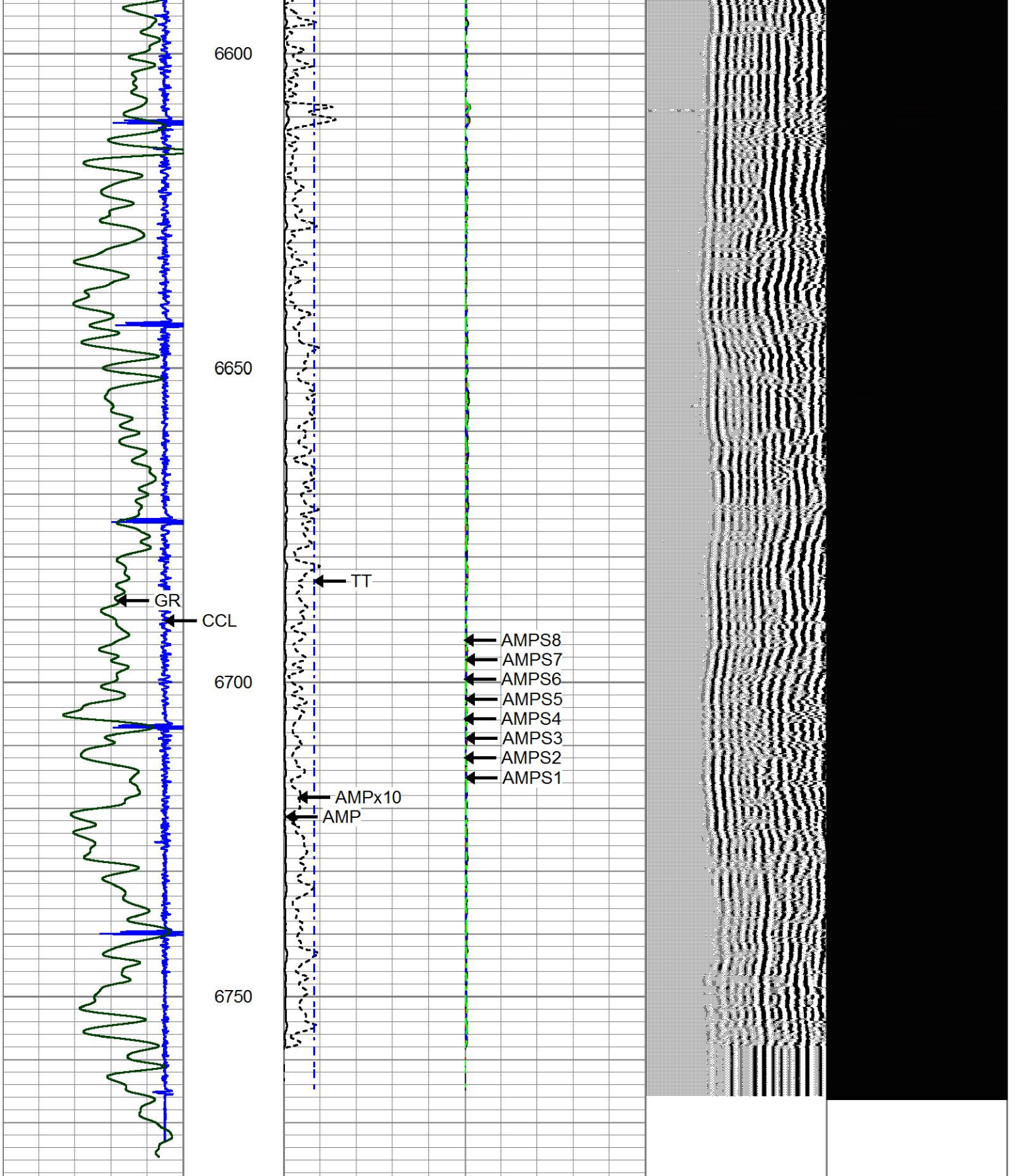
## 4.5" REPEAT PASS

LOG RAN WITH 0 PSI SURFACE INDUCED PRESSURE

Database File state25\_chevron\_rbl\_10-20-22.db  
 Dataset Pathname pass4  
 Presentation Format prb\_rbt8  
 Dataset Creation Thu Oct 20 09:19:22 2022  
 Charted by Depth in Feet scaled 1:240

-9	CCL	1	0	AMP (mV)	100	0	AMPS1	150	200	VDL (usec)	1200	1	Cement Map	8
0	GR (GAPI)	200	0	AMPx10 (mV)	10	0	AMPS2	150						
			350	TT (usec)	250	0	AMPS3	150						
						0	AMPS4	150						
						0	AMPS5	150						
						0	AMPS6	150						
						0	AMPS7	150						
						0	AMPS8	150						





-9	CCL	1	0	AMP (mV)	100	0	AMPS1	150	200	VDL (usec)	1200	1	Cement Map	8
0	GR (GAPI)	200	0	AMPx10 (mV)	10	0	AMPS2	150						
			350	TT (usec)	250	0	AMPS3	150						
						0	AMPS4	150						
						0	AMPS5	150						
						0	AMPS6	150						
						0	AMPS7	150						

Sensor	Offset (ft)	Schematic	Description	Length (ft)	O.D. (in)	Weight (lb)	
GCT_FMWR	24.36		CENT-BC275-0000 Probe 2.75" Bowspring Centralizer	2.83	2.75	24.00	
mSec_Count	24.36						
RBT_Status	24.36						
Error_Ct	24.36						
RBT_HV	22.09						
				RBT8-HTRCB-275 (FW2001-30) Probe 2.75" High Temperature RADII 8 Sector Bond Tool w/ external temperature	11.08	2.75	
RBT_ACCZ	14.69						
RBT_ACCY	14.69						
RBT_ACCX	14.69						
WVFSYNC	14.69						
WVFS8	14.69						
WVFS7	14.69						
WVFS6	14.69						
WVFS5	14.69						
WVFS4	14.69						
WVFS3	14.69						
WVFS2	14.69						
WVFS1	14.69			CENT-BC275-0000 Probe 2.75" Bowspring Centralizer	2.83	2.75	24.00
WVFCAL	14.69						
WVF3FT	14.69						
WVF5FT	13.69						
GCT_HV	7.61						
CCL\$2	6.31						
CCL\$1	6.31						
GCT_Temp	5.43		GCacc-GCL004 (GCL004_base) Probe High Temp Gamma Ray - CCL (6 Magnet) w/ Temp	7.28	2.75	92.00	
GCT_IntTemp	2.00						
GR	1.75		Plug-FA108-0000 1.38" Bull Plug	0.33	1.38	1.00	

Dataset: state25\_chevron\_rbl\_10-20-22.db: field/well/run1/pass6  
 Total length: 24.36 ft  
 Total weight: 141.00 lb  
 O.D.: 2.75 in

# Log Variables

DatabaseC:\ProgramData\Warrior\Data\state25\_chevron\_rbl\_10-20-22.db  
 Dataset field/well/run1/pass6/\_vars\_

## Top - Bottom

BOREID in 7.875	BOTTEMP degF 200	CASEOD in 4.5	CASETHCK in 0	CASEWGHT lb/ft 11.6	MAXAMPL mV 0	MINAMPL mV 1	MINATTN db/ft 0.8
PERFS No	PPT usec 0	SRFTEMP degF 0	TDEPTH ft 0				

## Variable Description

BOREID : Borehole I.D.	CASEWGHT : Casing Weight	PERFS : Perforation Flag
BOTTEMP : Bottom Hole Temperature	MAXAMPL : Maximum Amplitude	PPT : Predicted Pipe Time
CASEOD : Casing O.D.	MINAMPL : Minimum Amplitude	SRFTEMP : Surface Temperature
CASETHCK : Casing Thickness	MINATTN : Minimum Attenuation	TDEPTH : Total Depth

## Calibration Report

Database File state25\_chevron\_rbl\_10-20-22.db  
 Dataset Pathname pass6  
 Dataset Creation Thu Oct 20 09:34:12 2022

## Gamma Ray Calibration Report

Serial Number: GCL004\_base  
 Tool Model: GCL004  
 Performed: (Not Performed)

Calibrator Value: 1.0 GAPI

Background Reading: 0.0 cps  
 Calibrator Reading: 1.0 cps

Sensitivity: 1.0000 GAPI/cps

## Segmented Cement Bond Log Calibration Report

Serial Number: FW2001-30  
 Tool Model: HTRCB-275

Calibration Casing Diameter: 4.500 in  
 Calibration Depth: 1430.842 ft

Master Calibration, performed Thu Oct 20 08:49:21 2022:

	Raw (v)		Calibrated (mv)		Results	
	Zero	Cal	Zero	Cal	Gain	Offset
3'	0.007	1.009	0.000	81.196	81.087	-0.598
CAL	0.012	1.150				
5'	0.011	0.826	0.000	81.196	99.715	-1.141
SUM						
S1	0.007	1.010	0.000	100.000	99.738	-0.721
S2	0.008	0.984	0.000	100.000	102.513	-0.858
S3	0.008	0.999	0.000	100.000	100.872	-0.804

S4	0.009	1.030	0.000	100.000	97.938	-0.895
S5	0.008	1.040	0.000	100.000	96.861	-0.752
S6	0.014	1.060	0.000	100.000	95.518	-1.291
S7	0.012	1.055	0.000	100.000	95.827	-1.116
S8	0.009	1.018	0.000	100.000	99.105	-0.909

Internal Reference Calibration, performed (Not Performed):

	Raw (v)		Calibrated (v)		Results	
	Zero	Cal	Zero	Cal	Gain	Offset
CAL	0.000	0.000	0.012	1.150	1.000	0.000

Air Zero Calibration, performed (Not Performed):

	Raw (v)		Calibrated (v)		Results	
	Zero		Zero		Offset	
3'	0.000		0.000		0.000	
5'	0.000		0.000		0.000	
SUM						
S1	0.000		0.000		0.000	
S2	0.000		0.000		0.000	
S3	0.000		0.000		0.000	
S4	0.000		0.000		0.000	
S5	0.000		0.000		0.000	
S6	0.000		0.000		0.000	
S7	0.000		0.000		0.000	
S8	0.000		0.000		0.000	

Inclinometer Calibration Report

	Performed:		(Not Performed)		
	Low Read.	High Read.	Low Ref.	High Ref.	
X Accelerometer	0.00	1.00	0.00	1.00	gee
Y Accelerometer	0.00	1.00	0.00	1.00	gee
Z Accelerometer	0.00	1.00	0.00	1.00	gee

Company	CHEVRON
Well	STATE 25
Field	WATTENBERG
County	WELD
State	COLORADO