



Chevron RBU

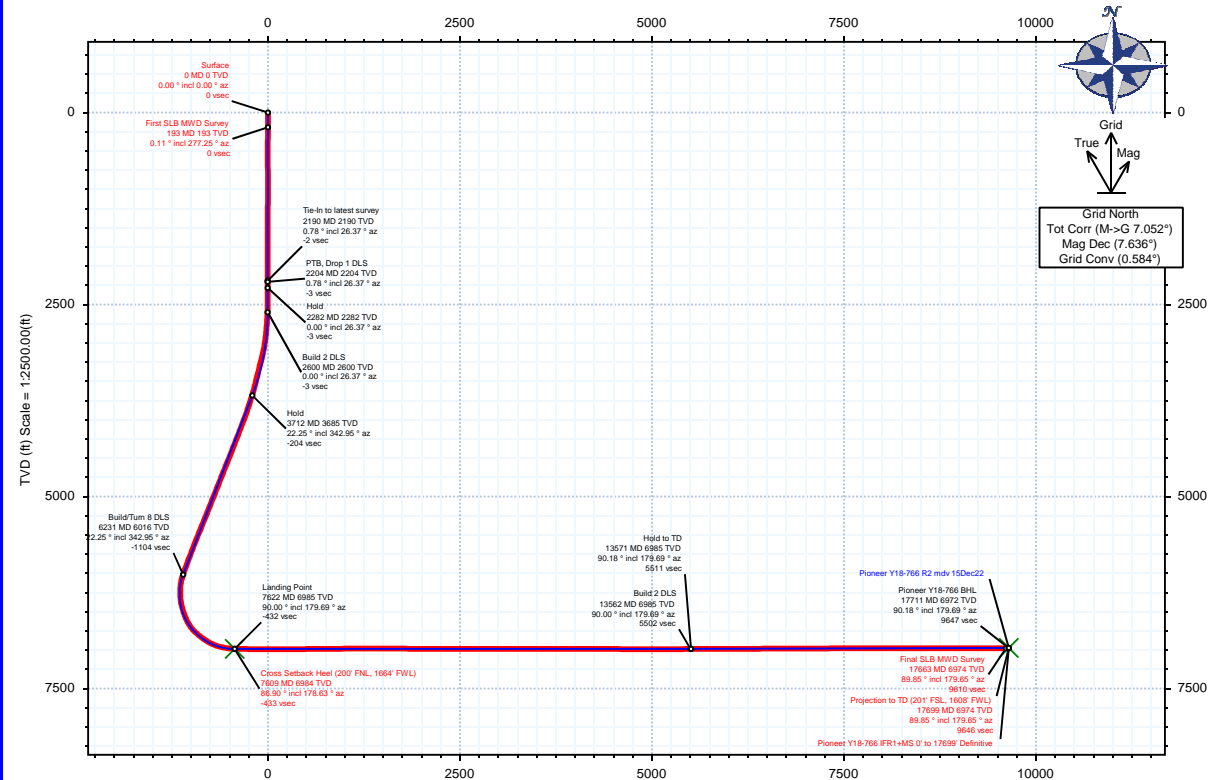


Borehole: Pioneer Y18-766	Well: Pioneer Y18-766	Field: CO, Weld County (NAD 83 NZ) - 2019	Structure: Chevron RBU 07-02N-64W (Y07-03 Pad)
-------------------------------------	---------------------------------	---	--

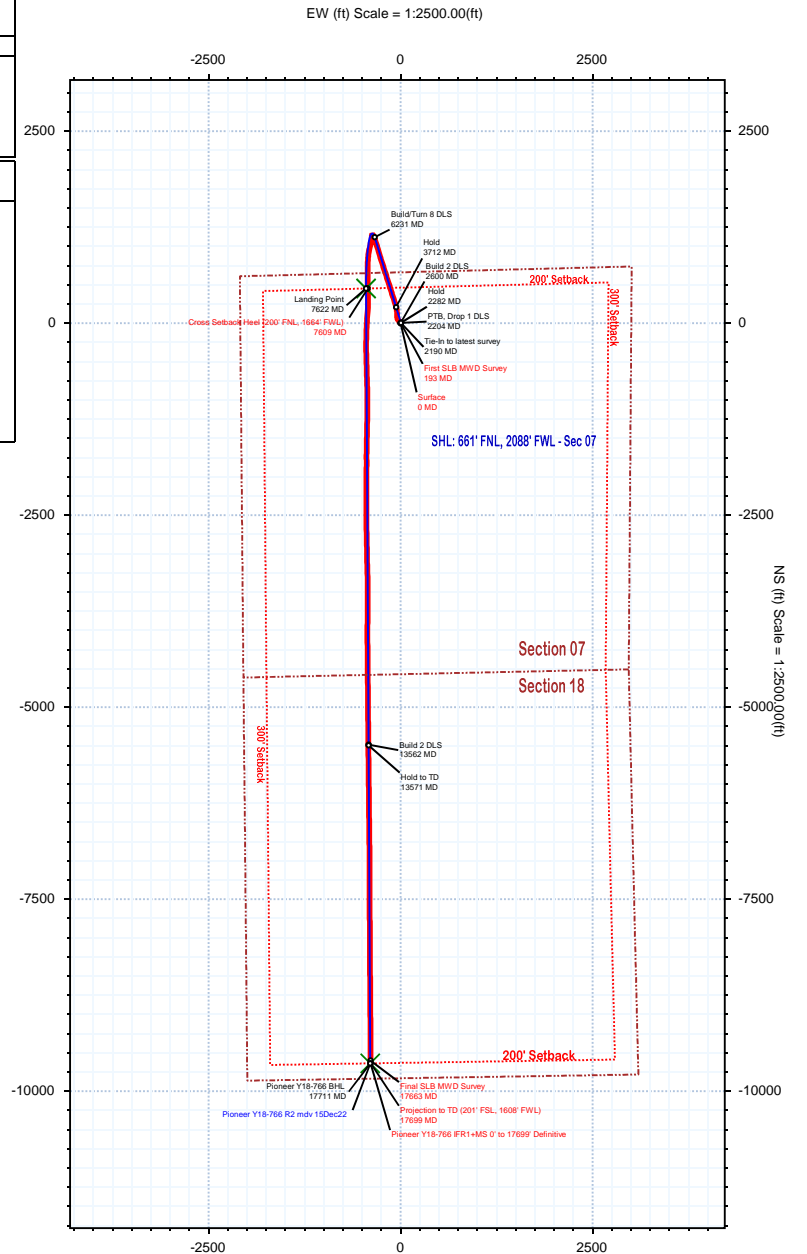
Gravity & Magnetic Parameters				Surface Location				NAD83 Colorado State Plane, Northern Zone, US Feet				Miscellaneous			
Model: IFR	Dip: 66.47°	Date: 14-Dec-2022		Lat: N 40 9 29.28	Northing: 1301740.94ftUS	Grid Conv: 0.5845°		Slot: Pioneer Y18-766	TVD Ref: KB 29ft(4913ft above MSL)						
MagDec: 7.636°	FS: 51714nT	Gravity FS: 999.005mgn (9.80665 Based)		Lon: W 104 35 43.59	Easting: 3252822.89ftUS	Scale Fact: 0.99995815		Plan: Pioneer Y18-766 IFR1+MS 0' to 17699' Definitive							

Surface Location		Northing: 1301740.94245348		Easting: 3252822.89185083		Latitude: N 40 9 29.28		Longitude: W 104 35 43.59		VSec Azimuth: 182.35	
Target Description		Grid Coord		Local Coord		TVD		VSec		N(+)/S(-) E(+)/W(-)	
Target Name	Latitude	Longitude	Northing	Easting	TVD	VSec	N(+)/S(-)	E(+)/W(-)			
DP 425S Pads Sec 07-18	N 40 9 29.51	W 104 35 43.59	1301763.53	3252822.66	4913.00	-22.56	22.59	-0.23			
DP 425S Pads Sec 07-18 - 200'INS:300'E/W SB	N 40 9 28.53	W 104 35 33.78	1301672.96	3253585.28	4913.00	36.70	-67.99	762.42			
Pioneer Y18-766 BHL	N 40 7 54.07	W 104 35 49.95	1292102.45	3252427.68	6972.00	9647.02	-9638.92	-395.23			
Pioneer Y18-766 LP	N 40 9 33.78	W 104 35 49.33	1302191.36	3252372.88	6985.00	-431.62	450.44	-450.03			

Critical Points								
Critical Point	MD	INCL	AZIM	TVD	VSEC	N(+)/S(-)	E(+)/W(-)	DLS
Surface	0.00	0.00	0.00	0.00	0.00	0.00	0.00	
First SLB MWD Survey	193.00	0.11	277.25	193.00	-0.02	0.02	-0.18	0.06
Cross Setback Heel (200' FNL, 1664' FWL)	7608.60	86.90	178.63	6983.67	-432.85	450.80	-428.68	5.03
Final SLB MWD Survey	17663.00	89.85	179.65	6974.09	9610.00	-9602.01	-391.78	0.79
Projection to TD (201' FSL, 1608' FWL)	17699.00	89.85	179.65	6974.18	9645.96	-9638.01	-391.56	0.00



Vertical Section (ft) Azim = 182.35° Scale = 1:2500.00(ft) Origin = 0N/-S, 0E/-W





Pioneer Y18-766 IFR1+MS 0' to 17699' Definitive Survey Geodetic Report

(Def Survey)

Report Date: December 27, 2022 - 02:27 PM
Client: Chevron RBU
Field: CO, Weld County (NAD 83 NZ) - 2019
Structure / Slot: Chevron RBU 07-02N-64W (Y07-03 Pad) / Pioneer Y18-766
Well: Pioneer Y18-766
Borehole: Pioneer Y18-766
UWI / API#: Unknown / 05-123-48768
Survey Name: Pioneer Y18-766 IFR1+MS 0' to 17699' Definitive
Survey Date: December 14, 2022
Tort / AHD / DDI / ERD Ratio: 219.512 ° / 12043.126 ft / 6.826 / 1.723
Coordinate Reference System: NAD83 Colorado State Plane, Northern Zone, US Feet
Location Lat / Long: N 40° 9' 29.28240", W 104° 35' 43.59480"
Location Grid N/E Y/X: N 1301740.942 ftUS, E 3252822.892 ftUS
CRS Grid Convergence Angle: 0.5845 °
Grid Scale Factor: 0.99995815
Version / Patch: 2.10.834.0

Survey / DLS Computation: Minimum Curvature / Lubinski
Vertical Section Azimuth: 182.348 ° (Grid North)
Vertical Section Origin: 0.000 ft, 0.000 ft
TVD Reference Datum: KB 29ft
TVD Reference Elevation: 4913.000 ft above MSL
Seabed / Ground Elevation: 4884.000 ft above MSL
Magnetic Declination: 7.636 °
Total Gravity Field Strength: 999.0048mgn (9.80665 Based)
Gravity Model: GARM
Total Magnetic Field Strength: 51714.000 nT
Magnetic Dip Angle: 66.470 °
Declination Date: December 14, 2022
Magnetic Declination Model: IFR
North Reference: Grid North
Grid Convergence Used: 0.5845 °
Total Corr Mag North->Grid North: 7.0515 °
Local Coord Referenced To: Well Head

Comments	MD (ft)	Incl (°)	Azim Grid (°)	TVD (ft)	VSEC (ft)	NS (ft)	EW (ft)	DLS (°/100ft)	Northing (ftUS)	Easting (ftUS)	Latitude (°)	Longitude (°)
Surface	0.00	0.00	0.00	0.00	0.00	0.00	0.00	N/A	1301740.94	3252822.89	40.158134	-104.595443
First SLB MWD Survey	193.00	0.11	277.25	193.00	-0.02	0.02	-0.18	0.06	1301740.97	3252822.71	40.158134	-104.595444
	278.00	0.50	345.32	278.00	-0.38	0.39	-0.36	0.55	1301741.33	3252822.53	40.158135	-104.595444
	378.00	0.30	3.05	378.00	-1.06	1.08	-0.46	0.23	1301742.02	3252822.44	40.158137	-104.595445
	473.00	0.08	2.33	473.00	-1.37	1.39	-0.44	0.23	1301742.33	3252822.45	40.158138	-104.595445
	568.00	0.27	161.13	568.00	-1.23	1.25	-0.36	0.36	1301742.19	3252822.53	40.158137	-104.595444
	663.00	0.18	99.97	663.99	-1.00	1.01	-0.14	0.25	1301741.95	3252822.75	40.158137	-104.595443
	758.00	0.11	188.97	757.99	-0.89	0.89	-0.01	0.22	1301741.83	3252822.88	40.158136	-104.595443
	852.00	0.10	140.97	851.99	-0.74	0.74	0.03	0.09	1301741.68	3252822.92	40.158136	-104.595443
	947.00	0.22	213.08	946.99	-0.52	0.52	-0.02	0.22	1301741.46	3252822.87	40.158135	-104.595443
	1042.00	0.10	326.12	1041.99	-0.43	0.44	-0.17	0.29	1301741.38	3252822.72	40.158135	-104.595444
	1136.00	0.25	30.73	1135.99	-0.68	0.68	-0.11	0.24	1301741.62	3252822.78	40.158136	-104.595443
	1231.00	0.26	357.83	1230.99	-1.07	1.08	-0.01	0.15	1301742.02	3252822.88	40.158137	-104.595443
	1326.00	0.12	7.50	1325.99	-1.39	1.39	-0.01	0.15	1301742.33	3252822.89	40.158138	-104.595443
	1421.00	0.52	88.63	1420.99	-1.51	1.50	0.44	0.54	1301742.44	3252823.33	40.158138	-104.595441
	1516.00	0.72	84.81	1515.98	-1.62	1.56	1.46	0.21	1301742.50	3252824.36	40.158138	-104.595438
	1611.00	0.35	84.98	1610.98	-1.74	1.64	2.35	0.39	1301742.58	3252825.24	40.158138	-104.595435
	1705.00	0.26	71.27	1704.98	-1.85	1.74	2.83	0.12	1301742.68	3252825.73	40.158139	-104.595433
	1800.00	0.06	260.71	1799.98	-1.92	1.80	2.99	0.34	1301742.74	3252825.88	40.158139	-104.595432
	1895.00	0.22	223.01	1894.98	-1.77	1.66	2.82	0.19	1301742.60	3252825.71	40.158138	-104.595433
	1990.00	0.25	258.51	1989.98	-1.58	1.48	2.49	0.15	1301742.42	3252825.38	40.158138	-104.595434
	2084.00	0.21	288.55	2083.98	-1.58	1.49	2.12	0.13	1301742.44	3252825.02	40.158138	-104.595435
	2179.00	0.77	16.45	2178.97	-2.25	2.16	2.14	0.83	1301743.10	3252825.03	40.158140	-104.595435
	2190.00	0.78	26.37	2189.97	-2.39	2.30	2.19	1.22	1301743.24	3252825.09	40.158140	-104.595435
	2270.00	0.11	89.22	2269.97	-2.89	2.79	2.51	0.92	1301743.73	3252825.40	40.158142	-104.595434
	2365.00	0.15	114.80	2364.97	-2.85	2.74	2.72	0.07	1301743.68	3252825.61	40.158141	-104.595433
	2460.00	0.07	169.38	2459.97	-2.74	2.63	2.84	0.13	1301743.57	3252825.73	40.158141	-104.595433
	2554.00	1.92	320.48	2553.95	-3.86	3.79	1.85	2.11	1301744.73	3252824.74	40.158144	-104.595436
	2649.00	4.27	311.21	2648.81	-7.26	7.35	-1.82	2.52	1301748.29	3252821.07	40.158154	-104.595449
	2744.00	6.72	314.34	2743.36	-13.20	13.56	-8.46	2.60	1301754.50	3252814.43	40.158171	-104.595473
	2839.00	7.64	313.62	2837.62	-21.09	21.80	-17.01	0.97	1301762.74	3252805.88	40.158194	-104.595503
	2934.00	9.18	321.00	2931.60	-30.94	32.05	-26.35	1.98	1301772.99	3252796.54	40.158223	-104.595536
	3028.00	10.84	324.21	3024.16	-43.53	45.05	-36.24	1.86	1301785.99	3252786.65	40.158259	-104.595571
	3123.00	12.58	346.88	3117.23	-60.53	62.38	-43.82	5.14	1301803.32	3252779.08	40.158306	-104.595597
	3218.00	14.78	358.31	3209.55	-82.60	84.58	-46.52	3.66	1301825.51	3252776.37	40.158367	-104.595606
	3313.00	14.45	357.64	3301.47	-106.50	108.53	-47.37	0.39	1301849.47	3252775.53	40.158433	-104.595608
	3407.00	14.13	358.31	3392.57	-129.63	131.72	-48.19	0.38	1301872.65	3252774.70	40.158497	-104.595611
	3502.00	13.31	356.51	3484.85	-152.08	154.22	-49.20	0.97	1301895.16	3252773.70	40.158559	-104.595613
	3597.00	15.26	348.58	3576.92	-175.10	177.40	-52.34	2.90	1301918.33	3252770.55	40.158622	-104.595624
	3692.00	18.12	346.49	3667.91	-201.46	204.02	-58.27	3.08	1301944.96	3252764.63	40.158696	-104.595644
	3787.00	18.47	345.03	3758.11	-230.04	232.92	-65.61	0.61	1301973.86	3252757.29	40.158775	-104.595669
	3881.00	18.89	341.65	3847.16	-258.49	261.75	-74.24	1.24	1302002.68	3252748.65	40.158855	-104.595699
	3976.00	20.99	342.70	3936.46	-288.90	292.60	-84.14	2.24	1302033.53	3252738.75	40.158939	-104.595733
	4071.00	22.50	342.25	4024.70	-322.00	326.16	-94.75	1.60	1302067.08	3252728.15	40.159032	-104.595770
	4166.00	22.41	341.10	4112.50	-355.95	360.60	-106.15	0.47	1302101.53	3252716.74	40.159127	-104.595810
	4260.00	22.75	342.65	4199.29	-389.76	394.90	-117.38	0.73	1302135.83	3252705.52	40.159221	-104.595849
	4355.00	22.25	343.63	4287.06	-424.09	429.69	-127.93	0.66	1302170.62	3252694.97	40.159317	-104.595885
	4450.00	22.14	341.57	4375.02	-457.86	463.93	-138.65	0.83	1302204.85	3252684.24	40.159411	-104.595922
	4545.00	22.96	341.57	4462.76	-491.92	498.49	-150.17	0.86	1302239.42	3252672.73	40.159507	-104.595962
	4639.00	23.52	342.58	4549.13	-526.72	533.79	-161.58	0.73	1302274.70	3252661.32	40.159604	-104.596002
	4734.00	22.84	342.36	4636.46	-561.88	569.44	-172.85	0.72	1302310.36	3252650.05	40.159702	-104.596041
	4829.00	23.24	342.00	4723.88	-596.78	604.84	-184.22	0.45	1302345.75	3252638.68	40.159799	-104.596080
	4924.00	22.81	342.25	4811.31	-631.65	640.20	-195.63	0.46	1302381.12	3252627.27	40.159897	-104.596120
	5018.00	23.36	342.43	4897.79	-666.28	675.32	-206.81	0.59	1302416.24	3252616.09	40.159993	-104.596158
	5113.00	22.85	342.04	4985.17	-701.29	710.82	-218.18	0.56	1302451.74	3252604.72	40.160091	-104.596198
	5208.00	23.21	343.10	5072.59	-736.26	746.28	-229.31	0.58	1302487.19	3252593.59	40.160189	-104.596236
	5303.00	22.87	340.34	5160.02	-771.05	781.58	-240.97	1.19	1302522.49	3252581.94	40.160286	-104.596277
	5398.00	23.16	342.37	5247.46	-805.72	816.77	-252.84	0.89	1302557.68	3252570.07	40.160383	-104.596318
	5492.00	23.12	343.73	5333.90	-840.59	852.10	-263.60	0.57	1302593.01	3252559.30	40.160480	-104.596355
	5588.00	23.30	343.38	5422.13	-876.40	888.39	-274.32	0.24	1302629.29	3252548.59	40.160580	-104.596392
	5682.00	22.90	343.31	5508.59	-911.27	923.72	-284.89	0.43	1302664.62	3252538.02	40.160677	-104.596428
	5777.00	23.11	343.17	5596.04	-946.35	959.27	-295.59	0.23	1302700.17	3252527.31	40.160775	-104.596465
	5871.00	22.10	343.59	5682.81	-980.52	993.89	-305.93	1.09	1302734.79	3252516.98	40.160871	-104.596501
	5966.00	22.20	342.69	5770.80	-1014.35	1028.17	-316.32	0.37	1302769.07	3252506.59	40.160965	-104.596537
	6061.00	21.69	342.55	5858.92	-1047.76	1062.05	-326.92	0.54	1302802.95	3252495.98	40.161058	-104.596574
	6156.00	21.64	342.46	5947.21	-1080.75	1095.50	-337.47	0.06	1302836.39	3252485.44	40.161150	-104.596610
	6250.00	19.13	337.60	6035.32	-1111.05	1126.27	-348.56	3.22	1302867.17	3252474.35	40.161235	-104.596649
	6345.00	12.36	322.14	6126.74	-1132.98	1148.73	-360.75	8.32	1302898.62	3252462.16	40.161297	-104.596692
	6440.00	4.77	289.59	6220.66	-1141.94	1158.10	-370.73	9.18	1302898.99	3252452.18	40.161323	-104.596727
	6534.00	4.31	195.01	6314.47	-1139.65	1155.99	-375.34	7.10	1302896.89	3252447.57	40.161318	-104.596744
	6629.00	12.55	174.77	6408.38	-1125.91	1142.24	-375.32	9.09	1302883.13	3252447.59	40.161280	-104.596744
	6724.00	18.52	178.16	6499.87	-1100.60	1116.86	-373.89	6.35	1302857.75	3252449.02	40.161210	-104.596740
	6818.00	23.56	190.89	6587.62	-1067.10	1083.45	-376.97	7.21	1302824.35	3252445.94	40.161118	-104.596752
	6913.00	32.45	197.51	6671.43	-1023.63							

Comments	MD (ft)	Incl (°)	Azim Grid (°)	TVD (ft)	VSEC (ft)	NS (ft)	EW (ft)	DLS (°/100ft)	Northing (ftUS)	Easting (ftUS)	Latitude (°)	Longitude (°)
	7386.00	73.21	179.85	6947.27	-651.63	669.85	-430.88	10.38	1302410.76	3252392.03	40.159985	-104.596960
	7481.00	80.00	179.77	6969.27	-559.36	577.48	-430.57	7.15	1302318.40	3252392.34	40.159731	-104.596962
	7576.00	85.27	178.81	6981.44	-465.31	483.31	-429.40	5.64	1302224.23	3252393.51	40.159473	-104.596962
Cross Setback Heel (200' FNL, 1664' FWL)	7608.60	86.90	178.63	6983.67	-432.85	450.80	-428.68	5.03	1302191.72	3252394.24	40.159383	-104.596960
	7671.00	90.02	178.28	6985.35	-370.63	388.45	-426.99	5.03	1302129.37	3252395.92	40.159212	-104.596956
	7766.00	89.72	179.37	6985.56	-275.81	293.47	-425.04	1.19	1302034.40	3252397.87	40.158951	-104.596953
	7860.00	89.54	183.87	6986.17	-181.84	199.53	-427.70	4.79	1301940.47	3252395.21	40.158694	-104.596966
	7955.00	89.43	183.63	6987.02	-86.88	104.74	-433.91	0.28	1301845.68	3252389.00	40.158434	-104.596991
	8050.00	89.48	183.59	6987.93	8.10	9.93	-439.90	0.07	1301750.88	3252383.02	40.158174	-104.597016
	8145.00	89.89	182.69	6988.45	103.08	-84.92	-445.10	1.04	1301656.03	3252377.81	40.157913	-104.597038
	8239.00	90.53	181.02	6988.10	197.08	-178.87	-448.14	1.90	1301562.08	3252374.77	40.157656	-104.597053
	8334.00	90.30	180.16	6987.42	292.03	-273.86	-449.12	0.94	1301467.10	3252373.79	40.157395	-104.597060
	8429.00	90.55	179.62	6986.71	386.94	-386.86	-448.94	0.63	1301372.10	3252373.97	40.157134	-104.597062
	8524.00	90.56	178.49	6985.79	481.78	-463.84	-447.37	1.19	1301277.13	3252375.54	40.156873	-104.597060
	8618.00	90.74	178.12	6984.72	575.54	-557.79	-444.59	0.44	1301183.18	3252378.32	40.156615	-104.597054
	8713.00	90.36	178.39	6983.81	670.29	-652.74	-441.70	0.49	1301088.23	3252381.21	40.156355	-104.597047
	8808.00	90.44	177.97	6983.15	765.03	-747.69	-438.68	0.45	1300993.29	3252384.23	40.156094	-104.597040
	8902.00	90.28	178.47	6982.56	858.79	-841.64	-435.76	0.56	1300899.34	3252387.15	40.155836	-104.597033
	8997.00	90.76	180.15	6981.70	953.65	-936.63	-434.62	1.84	1300804.36	3252388.29	40.155575	-104.597032
	9092.00	90.51	180.10	6980.64	1048.57	-1031.62	-434.82	0.27	1300709.37	3252388.09	40.155314	-104.597036
	9186.00	90.11	180.29	6980.14	1142.50	-1125.62	-435.14	0.47	1300615.37	3252387.77	40.155056	-104.597041
	9281.00	89.80	180.33	6980.21	1237.44	-1220.62	-435.66	0.33	1300520.38	3252387.25	40.154796	-104.597046
	9376.00	89.83	180.59	6980.52	1332.39	-1315.61	-436.42	0.28	1300425.39	3252386.49	40.154535	-104.597052
	9471.00	90.18	181.31	6980.51	1427.36	-1410.60	-438.00	0.84	1300330.40	3252384.91	40.154274	-104.597061
	9565.00	89.82	181.80	6980.51	1521.35	-1504.57	-440.55	0.65	1300236.44	3252382.36	40.154016	-104.597074
	9660.00	89.88	181.06	6980.76	1616.34	-1599.54	-442.92	0.78	1300141.48	3252379.99	40.153756	-104.597086
	9755.00	89.84	180.80	6980.99	1711.31	-1694.52	-444.46	0.28	1300046.49	3252378.45	40.153495	-104.597095
	9850.00	89.68	179.39	6981.39	1806.23	-1789.52	-444.62	1.49	1299951.50	3252378.29	40.153234	-104.597099
	9944.00	89.65	180.92	6981.94	1900.16	-1883.51	-444.87	1.63	1299857.51	3252378.04	40.152976	-104.597103
	10039.00	90.24	181.06	6982.03	1995.13	-1978.50	-446.51	0.64	1299762.53	3252376.40	40.152716	-104.597112
	10134.00	89.89	180.77	6981.92	2090.10	-2073.49	-448.03	0.48	1299667.55	3252374.85	40.152455	-104.597121
	10228.00	90.02	180.00	6981.99	2184.05	-2167.48	-448.66	0.83	1299573.55	3252374.25	40.152197	-104.597127
	10323.00	89.73	179.72	6982.41	2278.00	-2261.47	-448.20	0.21	1299479.56	3252374.71	40.151938	-104.597133
	10418.00	89.99	179.59	6982.64	2371.95	-2355.46	-447.63	0.31	1299385.56	3252373.28	40.151676	-104.597134
	10512.00	89.98	179.02	6982.66	2465.90	-2449.45	-446.48	0.60	1299291.57	3252371.81	40.151418	-104.597133
	10607.00	89.99	179.48	6982.69	2560.35	-2543.44	-445.24	0.48	1299197.58	3252370.34	40.151157	-104.597132
	10702.00	89.99	179.48	6982.69	2654.80	-2637.43	-444.09	0.48	1299103.59	3252368.87	40.150896	-104.597132
	10796.00	89.90	179.27	6982.78	2748.75	-2731.42	-442.94	0.24	1299009.60	3252367.40	40.150638	-104.597132
	10891.00	89.86	178.70	6982.98	2842.70	-2825.41	-441.79	0.60	1298915.61	3252365.93	40.150377	-104.597129
	10986.00	89.61	178.08	6983.42	2936.65	-2919.40	-439.64	0.70	1298821.62	3252364.46	40.150116	-104.597123
	11081.00	89.93	179.24	6983.80	3030.60	-3013.39	-437.49	1.27	1298727.63	3252362.99	40.149856	-104.597119
	11175.00	89.95	179.14	6983.90	3124.55	-3107.38	-436.34	0.11	1298633.64	3252361.52	40.149598	-104.597117
	11270.00	89.97	177.94	6983.96	3218.50	-3201.37	-435.19	1.26	1298539.65	3252359.05	40.149337	-104.597112
	11364.00	89.94	179.29	6984.11	3312.45	-3295.36	-434.04	0.71	1298445.66	3252357.58	40.149075	-104.597103
	11458.00	89.98	179.65	6984.18	3406.40	-3389.35	-432.89	0.38	1298351.67	3252356.11	40.148815	-104.597103
	11552.00	89.75	180.12	6984.40	3500.35	-3483.34	-431.74	0.56	1298257.68	3252354.64	40.148555	-104.597103
	11646.00	89.91	180.75	6984.68	3594.30	-3577.33	-430.59	0.68	1298163.69	3252353.17	40.148297	-104.597106
	11740.00	89.91	180.75	6984.68	3688.25	-3671.32	-429.44	0.68	1298069.70	3252351.70	40.148036	-104.597112
	11834.00	90.02	180.53	6984.74	3782.20	-3765.31	-430.01	0.26	1297975.71	3252350.23	40.147775	-104.597119
	11928.00	90.16	180.98	6984.59	3876.15	-3859.30	-431.26	0.50	1297881.72	3252348.76	40.147514	-104.597127
	12022.00	89.82	180.58	6984.61	3970.10	-3953.29	-432.51	0.56	1297787.73	3252347.29	40.147253	-104.597135
	12116.00	89.99	179.77	6984.76	4064.05	-4047.28	-433.83	0.87	1297693.74	3252345.82	40.146992	-104.597139
	12210.00	89.97	179.45	6984.80	4158.00	-4141.27	-432.18	0.34	1297600.75	3252344.35	40.146731	-104.597141
	12304.00	89.91	179.61	6984.90	4251.95	-4235.26	-431.41	0.18	1297506.76	3252342.88	40.146470	-104.597141
	12398.00	89.88	179.84	6985.07	4345.90	-4329.25	-430.66	0.24	1297412.77	3252341.41	40.146209	-104.597143
	12492.00	89.86	179.60	6985.28	4439.85	-4423.24	-430.49	0.26	1297318.78	3252339.94	40.145948	-104.597145
	12586.00	89.83	179.46	6985.54	4533.80	-4517.23	-429.74	0.15	1297224.79	3252338.47	40.145687	-104.597145
	12680.00	90.05	179.42	6985.64	4627.75	-4611.22	-428.78	0.24	1297130.80	3252336.99	40.145426	-104.597146
	12774.00	89.86	179.57	6985.72	4721.70	-4705.21	-427.93	0.25	1297036.81	3252335.52	40.145165	-104.597146
	12868.00	89.88	179.51	6985.93	4815.65	-4799.20	-427.18	0.07	1296942.82	3252334.05	40.144904	-104.597147
	12962.00	89.92	179.54	6986.10	4909.60	-4893.19	-426.43	0.05	1296848.83	3252332.58	40.144643	-104.597147
	13056.00	89.76	179.18	6986.36	5003.55	-4987.18	-425.68	0.41	1296754.84	3252331.11	40.144382	-104.597147
	13150.00	90.30	179.64	6986.31	5118.30	-5102.20	-424.36	0.75	1296660.85	3252329.64	40.144121	-104.597147
	13244.00	90.23	179.32	6985.87	5212.25	-5206.19	-423.60	0.34	1296566.86	3252328.17	40.143860	-104.597147
	13338.00	89.98	179.74	6985.70	5306.20	-5290.18	-422.72	0.51	1296472.87	3252326.70	40.143599	-104.597148
	13432.00	90.16	179.63	6985.58	5400.15	-5384.17	-422.21	0.22	1296378.88	3252325.23	40.143338	-104.597150
	13526.00	90.08	179.30	6985.38	5494.10	-5478.16	-421.32	0.36	1296284.89	3252323.76	40.143077	-104.597150
	13620.00	90.11	179.34	6985.23	5588.05	-5572.15	-420.19	0.05	1296190.90	3252322.29	40.142816	-104.597149
	13714.00	90.21	179.33	6984.96	5682.00	-5666.14	-419.09	0.11	1296096.91	3252320.82	40.142555	-104.597149
	13808.00	90.25	179.47	6984.58	5775.95	-5760.13	-418.09	0.15	1295992.92	3252319.35	40.142294	-104.597149
	13902.00	90.15	179.53	6984.25	5869.90	-5854.12	-417.27	0.12	1295898.93	3252317.88	40.142033	-104.597149
	14019.00	90.09	179.43	6984.05	5963.85	-5948.11	-416.41	0.12	1295804.94	3252316.41	40.141772	-104.597150
	14114.00	90.58	179.32	6983.50	6057.80	-6042.10	-415.57	0.53	1295710.95	3252314.94	40.141511	-104.597149
	14209.00	90.29	179.14	6982.78	6151.75	-6136.09	-414.10	0.36	1295616.96	3252313.47	40.141250	-104.597148
	14303.00	90.26	179.43	6982.32	6245.70	-6230.08	-412.93	0.31	1295522.97	3252312.00	40.141012	-104.597148
	14398.00	90.40	179.59	6981.78	6339.65	-6324.07	-412.11	0.22	1295428.98	3252310.53	40.140751	-104.597148
	14493.00	90.30	179.64	6981.20	6433.60	-6418.06	-411.47	0.12	1295334.99	3252309.06	40.140490	-104.597149
	14588.00	90.22	179.28	6980.77	6527.55							

Comments	MD (ft)	Incl (°)	Azim Grid (°)	TVD (ft)	VSEC (ft)	NS (ft)	EW (ft)	DLS (°/100ft)	Northing (ftUS)	Easting (ftUS)	Latitude (°)	Longitude (°)
Final SLB MWD Survey Projection to TD (201' FSL, 1608' FWL)	17621.00	89.93	179.97	6974.01	9568.04	-9560.01	-391.92	0.29	1292181.35	3252430.99	40.131904	-104.597193
	17663.00	89.85	179.65	6974.09	9610.00	-9602.01	-391.78	0.79	1292139.35	3252431.13	40.131789	-104.597194
	17699.00	89.85	179.65	6974.18	9645.96	-9638.01	-391.56	0.00	1292103.35	3252431.35	40.131690	-104.597195

Survey Type: Def Survey

Survey Error Model: ISCWSA Rev 3 *** 3-D 97.071% Confidence 3.0000 sigma

Survey Program:

Description	Part	MD From (ft)	MD To (ft)	EOU Freq (ft)	Hole Size (in)	Casing Diameter (in)	Survey Tool Type	Borehole / Survey
	1	0.000	29.000	1/98.425	13.500	9.625	A005Mb_MWD+IFR1-Depth Only	Pioneer Y18-766 / Pioneer Y18-766 IFR1+MS 0' to 17699' Definitive
	1	29.000	29.000	Act Stns	13.500	9.625	A005Mb_MWD+IFR1-Depth Only	Pioneer Y18-766 / Pioneer Y18-766 IFR1+MS 0' to 17699' Definitive
	1	29.000	2190.000	Act Stns	13.500	9.625	A005Mb_MWD+IFR1	Pioneer Y18-766 / Pioneer Y18-766 IFR1+MS 0' to 17699' Definitive
	1	2190.000	17699.000	Act Stns	8.500	5.500	A008Mb_MWD+IFR1+MS	Pioneer Y18-766 / Pioneer Y18-766 IFR1+MS 0' to 17699'