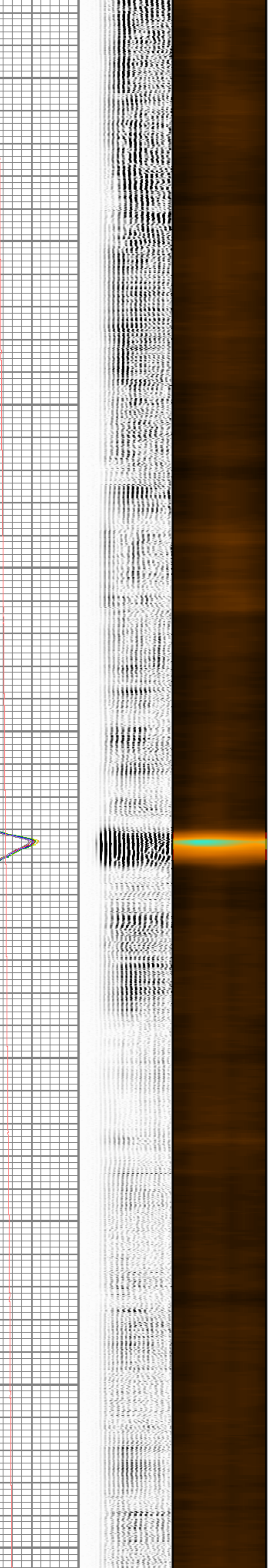
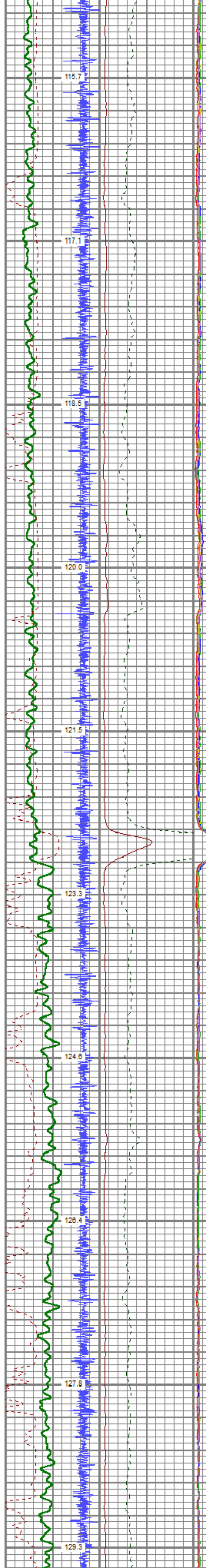
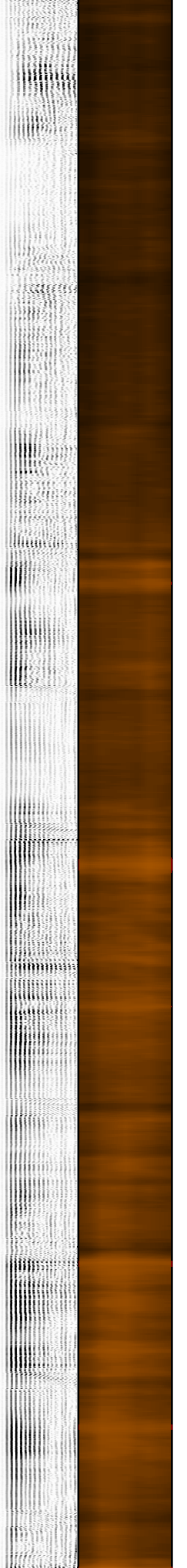
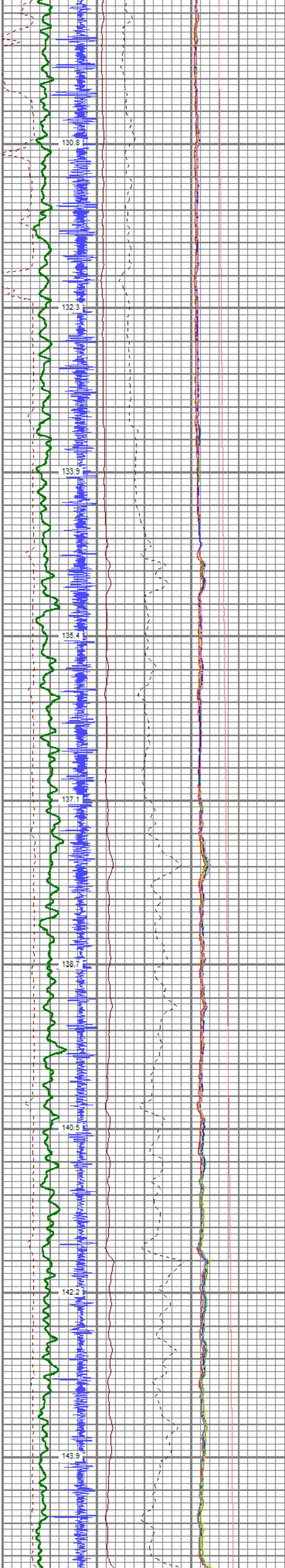


1950  
2000  
2050  
2100  
2150  
2200  
2250  
2300  
2350  
2400

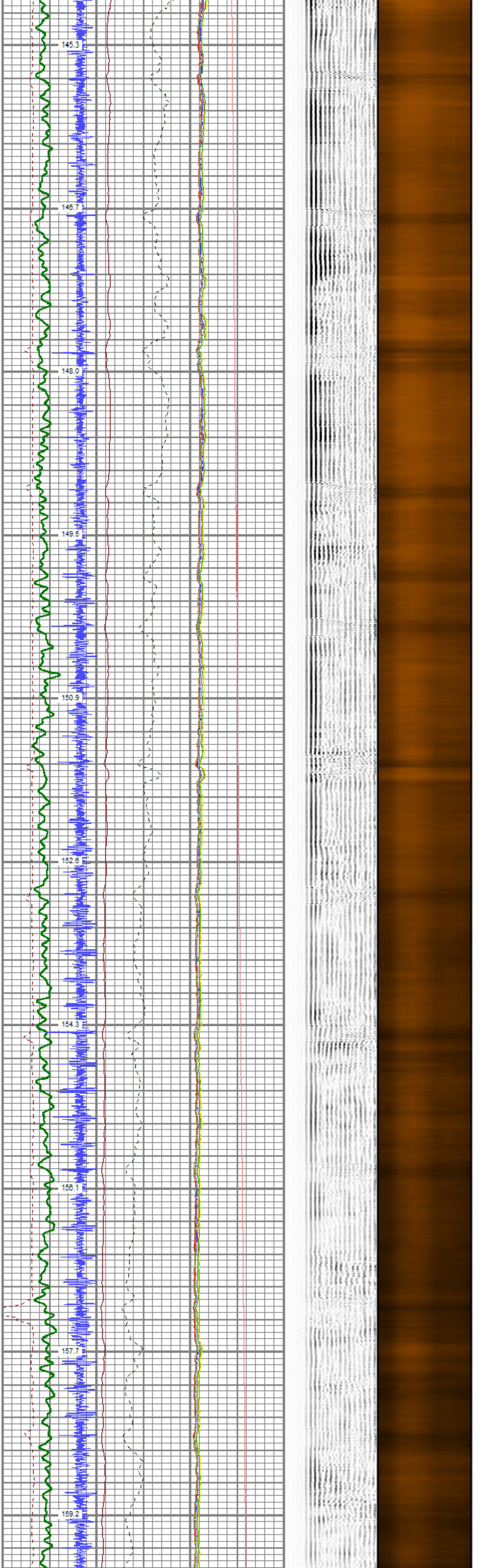


2450  
2500  
2550  
2600  
2650  
2700  
2750  
2800  
2850

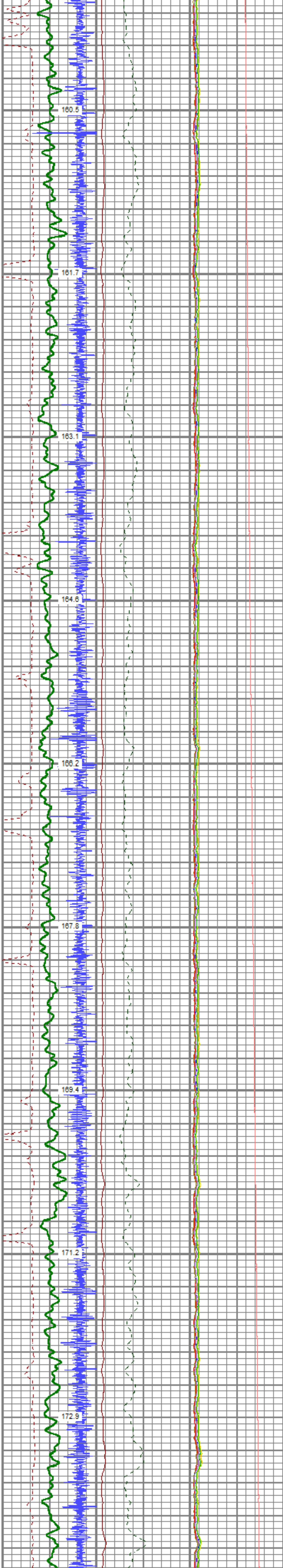


2900  
2950  
3000  
3050  
3100  
3150  
3200  
3250  
3300  
3350

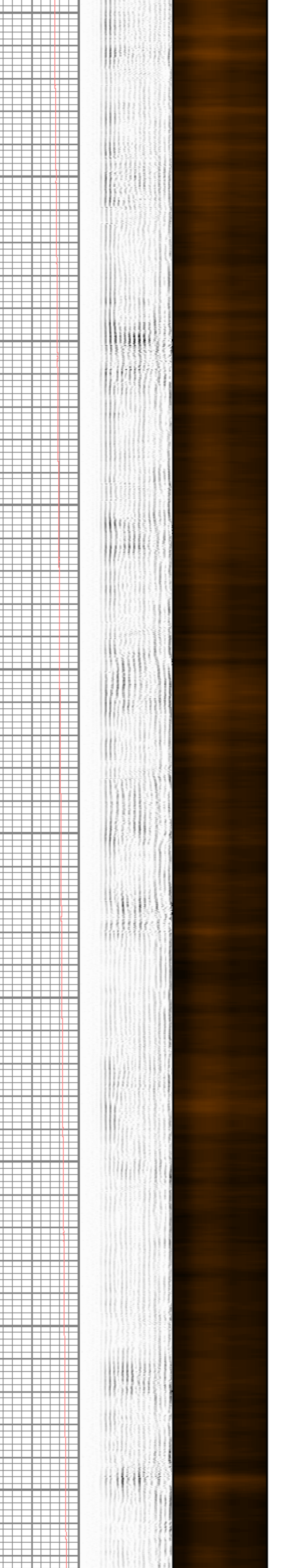
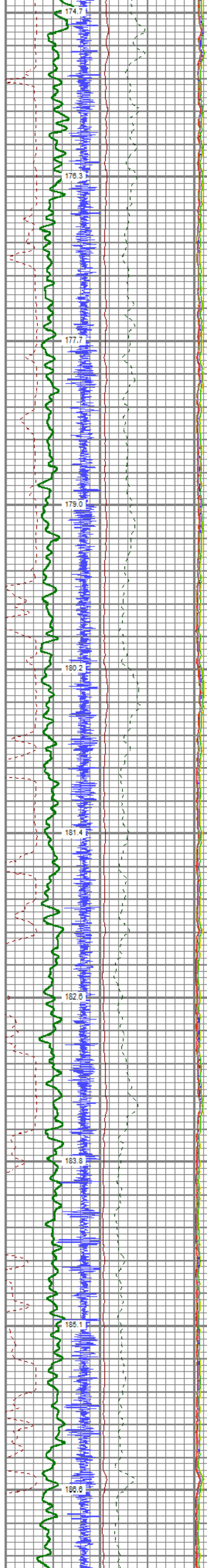
145.3  
146.7  
148.0  
149.5  
150.9  
152.6  
154.3  
156.1  
157.7  
159.2



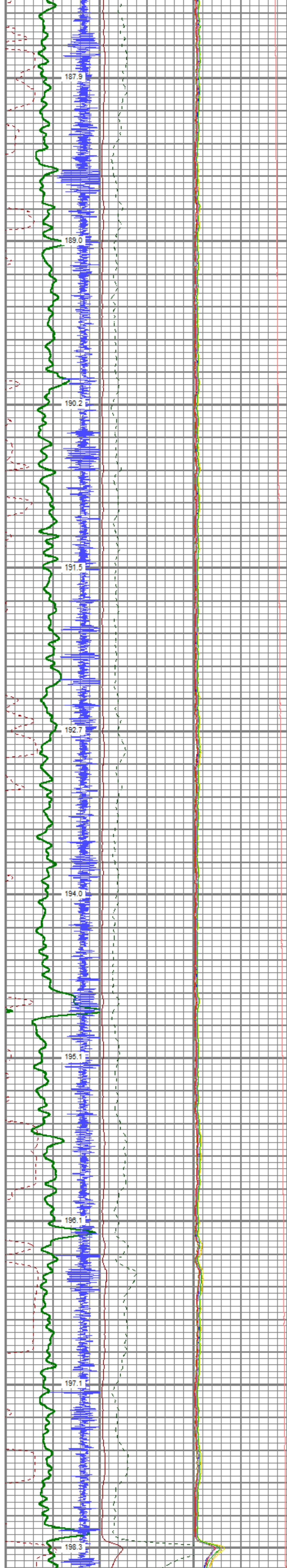
3400  
3450  
3500  
3550  
3600  
3650  
3700  
3750  
3800



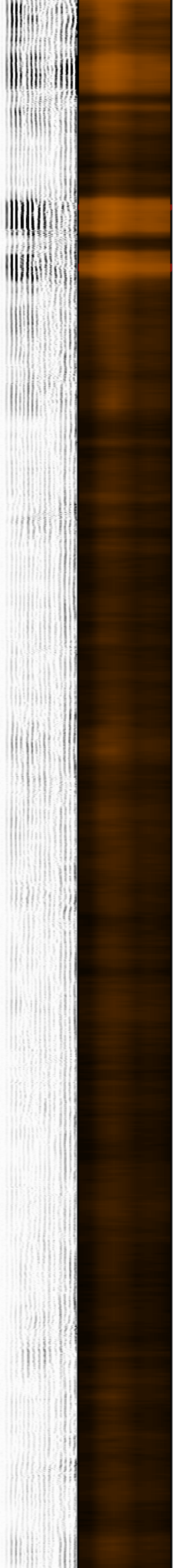
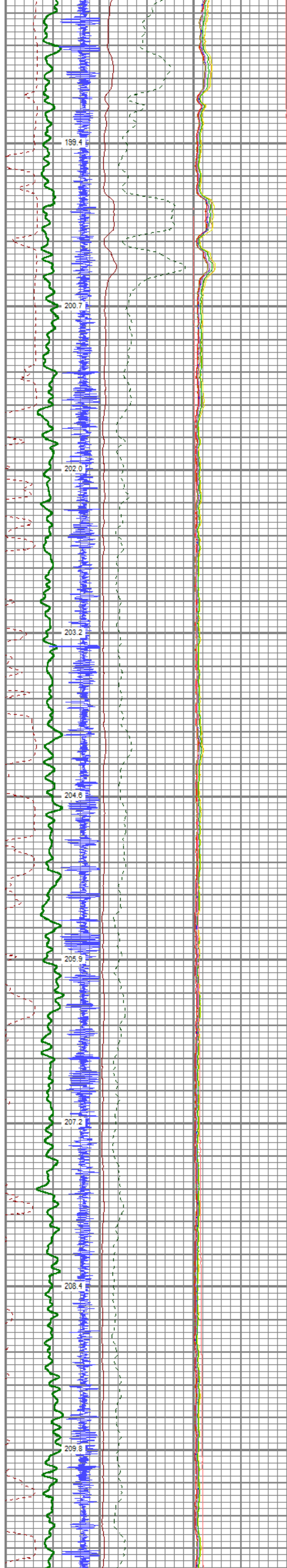
3850  
3900  
3950  
4000  
4050  
4100  
4150  
4200  
4250  
4300



4350  
4400  
4450  
4500  
4550  
4600  
4650  
4700  
4750  
4800

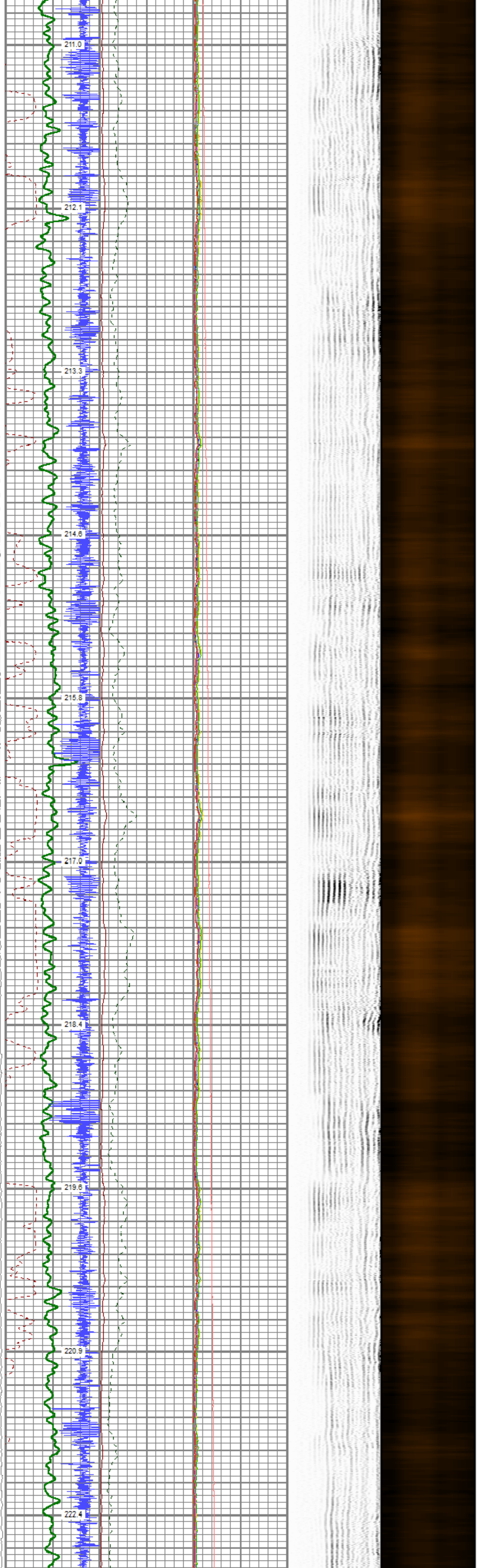


4850  
4900  
4950  
5000  
5050  
5100  
5150  
5200  
5250

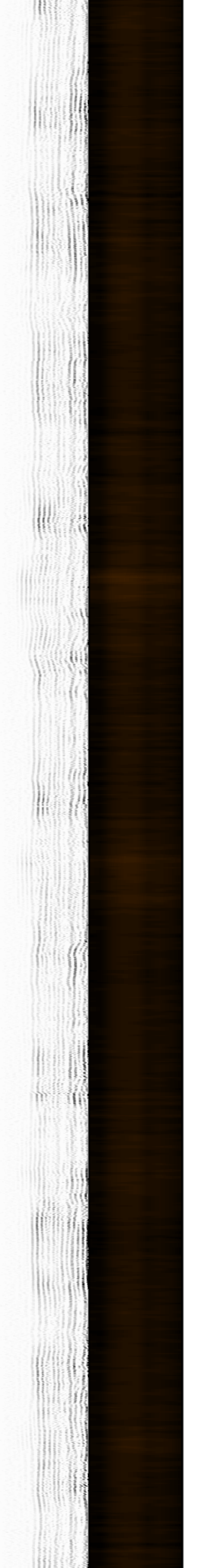
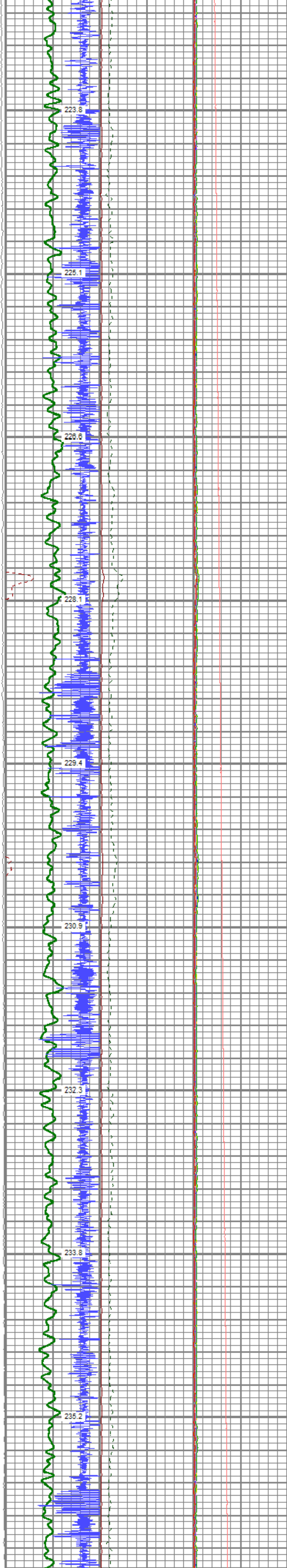


5300  
5350  
5400  
5450  
5500  
5550  
5600  
5650  
5700  
5750

211.0  
212.1  
213.3  
214.6  
215.8  
217.0  
218.4  
219.6  
220.9  
222.4



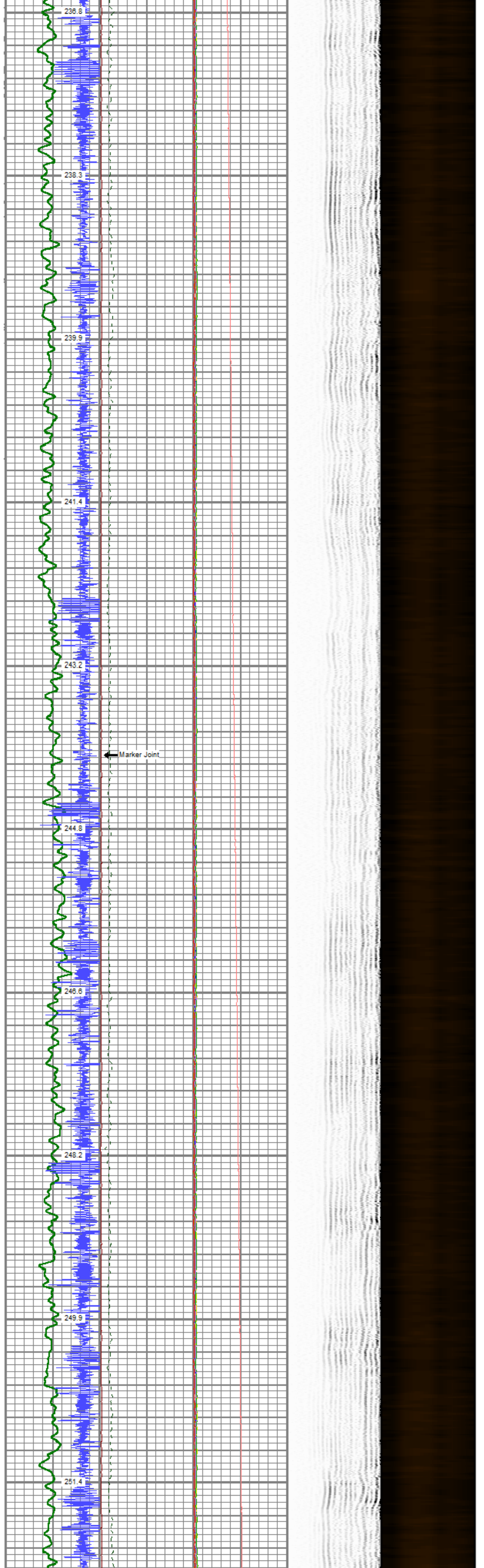
5800  
5850  
5900  
5950  
6000  
6050  
6100  
6150  
6200



6250  
6300  
6350  
6400  
6450  
6500  
6550  
6600  
6650  
6700

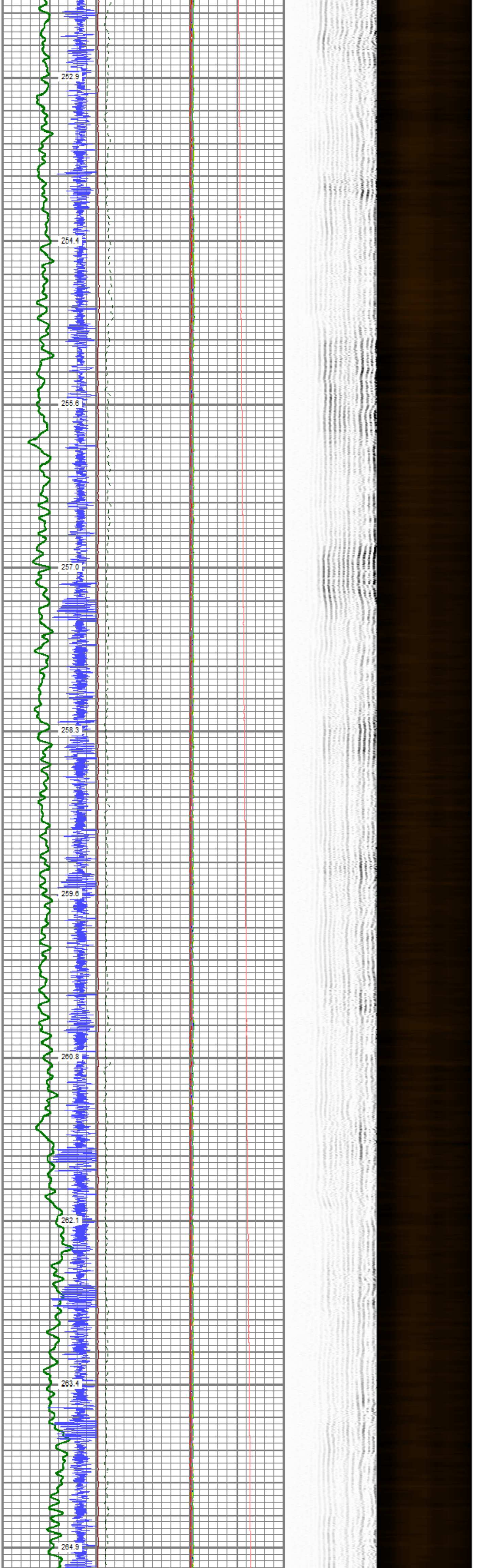
236.8  
238.3  
239.9  
241.4  
243.2  
244.8  
246.6  
248.2  
249.9  
251.4

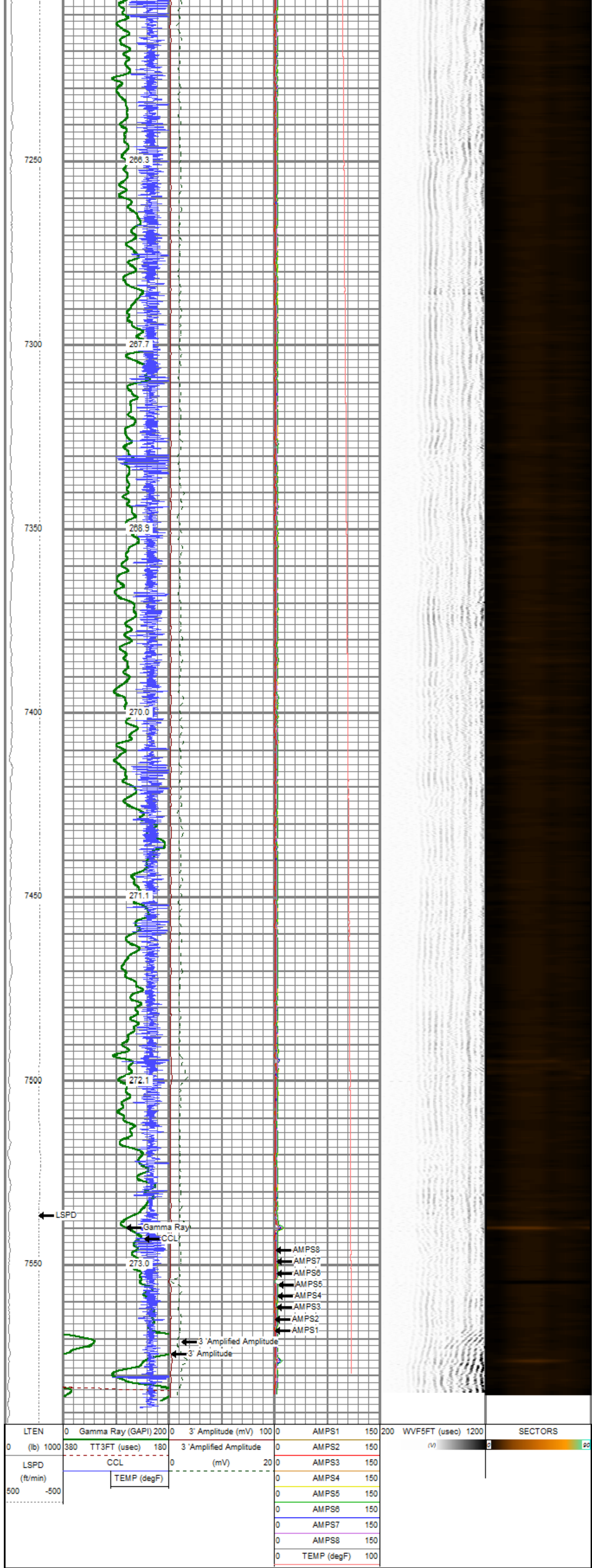
← Marker Joint



6750  
6800  
6850  
6900  
6950  
7000  
7050  
7100  
7150  
7200

252.9  
254.4  
255.6  
257.0  
258.3  
259.6  
260.8  
262.1  
263.4  
264.9





Sensor	Offset (ft)	Schematic	Description	Length (ft)	O.D. (in)	Weight (lb)
			Cable Head-Titan_144 1 7/16" Titan Cable Head	1.03	1.44	2.00

			Overbody-tekco	2.00	2.75	5.00
TEMP	11.56					
WVFS8	9.27					
WVFS7	9.27					
WVFS6	9.27					
WVFS5	9.27					
WVFS4	9.27					
WVFS3	9.27					
WVFS2	9.27					
WVFS1	9.27					
WVFCAL	9.27					
WVF3FT	9.27					
WVF5FT	8.27					
			PROBE-RBT-DIGITAL-RBL-DCT (140139_DD1) Probe 2 3/4" Radii Bond with Temp-Corrosion Package	9.21	2.75	105.00
DCCL	4.20					
CCL	4.20					
GCT_TEMP	3.41					
GR	2.83					
			PROBE-GR/CCL-DIGITAL-275 Probe GR/CCL 6 pin (120928) Probe 2 3/4" Gamma Ray/CCL	4.75	2.75	60.00
			CENT-tekco	2.00	4.50	3.00
			Bullnose-PROBE Probe Go Pin Pressure Cap	0.33	1.38	1.00
Dataset: chevron_pioneer_y18-785_rcbl_011723.db: field/well/2000psi/main.1 Total length: 15.32 ft Total weight: 179.00 lb O.D.: 4.50 in						

Calibration Report	
Database File	chevron_pioneer_y18-785_rcbl_011723.db
Dataset Pathname	2000psi/main.1
Dataset Creation	Tue Jan 17 12:18:12 2023

Gamma Ray Calibration Report		
Serial Number:	120928	
Tool Model:	275 Probe GR/CCL 6 pin	
Performed:	Mon Oct 10 13:50:39 2022	
Calibrator Value:	1.0	GAPI
Background Reading:	0.0	cps
Calibrator Reading:	1.0	cps
Sensitivity:	0.8000	GAPI/cps

Segmented Cement Bond Log Calibration Report			
Serial Number:	140139_DD1		
Tool Model:	RBL-DCT		
Calibration Casing Diameter:	5.500	in	
Calibration Depth:	48.250	ft	

Master Calibration, performed (Derived):						
	Raw (v)		Calibrated (mv)		Results	
	Zero	Cal	Zero	Cal	Gain	Offset
3'	-0.013	0.749	0.500	71.921	93.757	1.673
CAL	0.000	0.795				
5'	-0.008	0.619	0.500	71.921	113.821	1.435
SUM						
S1	-0.001	0.824	0.000	100.000	121.100	0.159
S2	-0.007	0.778	0.000	100.000	127.589	0.951
S3	-0.024	0.749	0.000	100.000	129.413	3.076
S4	-0.031	0.744	0.000	100.000	129.028	4.045
S5	-0.033	0.747	0.000	100.000	128.297	4.225
S6	-0.021	0.747	0.000	100.000	130.131	2.739
S7	-0.026	0.764	0.000	100.000	126.553	3.270
S8	-0.018	0.817	0.000	100.000	119.732	2.194

Air Zero Calibration, performed Sun Jan 8 06:02:17 2023:						
	Raw (v)		Calibrated (v)		Results	
	Zero		Zero		Offset	
3'	0.000		0.000		0.000	
5'	0.000		0.000		0.000	
SUM						
S1	0.000		0.000		0.000	
S2	0.000		0.000		0.000	
S3	0.000		0.000		0.000	
S4	0.000		0.000		0.000	

S5	0.000	0.000	0.000
S6	0.000	0.000	0.000
S7	0.000	0.000	0.000
S8	0.000	0.000	0.000

Temperature Calibration Report

Serial Number: 140139\_DD1  
 Tool Model: RBL-DCT  
 Performed: (Not Performed)

	Reference		Reading	
Low Reference:	0.00	degF	0.00	degF
High Reference:	1.00	degF	1.00	degF
Gain:	1.00			
Offset:	0.00			
Delta Spacing	1			



Company Chevron  
 Well Pioneer Y18-785  
 Field Wattenberg  
 County Weld  
 State Colorado