



A circular seal for a Professional Land Surveyor. The outer ring contains the text "COLORADO LICENSED" at the top and "PROFESSIONAL LAND SURVEYOR" at the bottom. The inner ring contains the name "MICHAEL GERARD STRATTON". In the center of the seal is the number "38621".

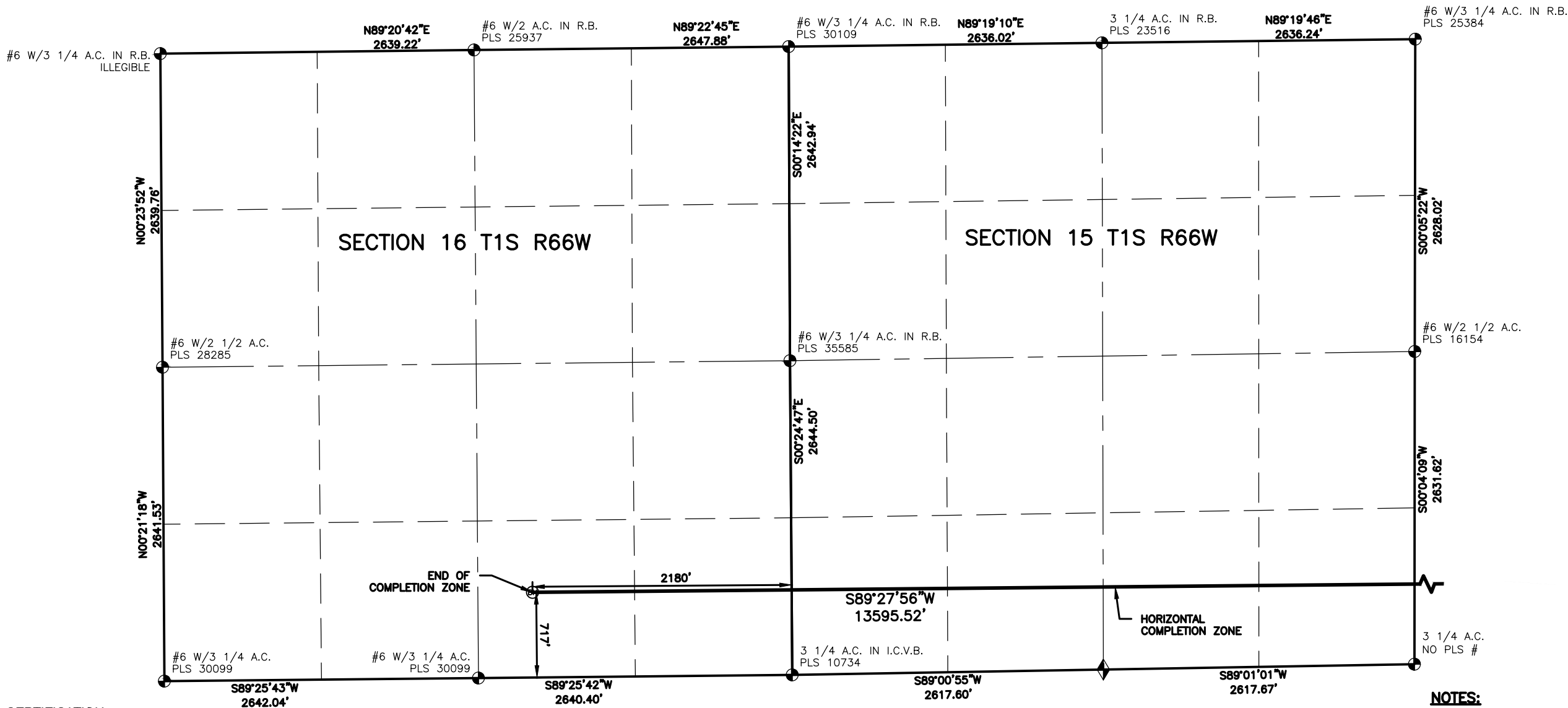


BASIS OF BEARING:
THE SOUTH LINE OF THE SOUTHEAST QUARTER OF SECTION 13-T1S-R66W BEARS S89°28'40"W FOR 2637.03 FEET BETWEEN THE SOUTHEAST CORNER OF SECTION 13, MONUMENTED WITH A #6 REBAR WITH 2-1/2" ALUMINUM CAP STAMPED "PLS 28285" AND THE SOUTH QUARTER CORNER OF SECTION 13, MONUMENTED WITH A 2-1/2" PIPE WITH 3-1/4" BRASS CAP STAMPED "PLS 16415", BASED ON THE COLORADO STATE PLANE COORDINATE SYSTEM, NORTH ZONE, NORTH AMERICAN DATUM OF 1983(2011).

WELL LOCATION PLAT

WARBLER 13W-27-19

I:\Engineering\0218002.14 XOG - Warbler\SURVEY\DRAWINGS\EXHIBITS\2022-WELL PLATS\WARBLER 13W-27-19B.dwg, 2/3/2023 11:17:54 AM, JOSHUA A. CROAK, LAMP RYNEARSON



LAND SURVEYOR'S CERTIFICATION

LAMP RYNEARSON, INC. OF FT. COLLINS, COLORADO HAS, IN ACCORDANCE WITH A REQUEST FROM NATHAN BENNETT OF EXTRACTION OIL & GAS, DETERMINED THE SURFACE LOCATION OF THE WELL DESIGNATED AS WARBLER 13W-27-19 TO BE 1169' FROM THE SOUTH LINE AND 1587' FROM THE EAST LINE OF SECTION 13, TOWNSHIP 1 SOUTH, RANGE 66 WEST OF THE 6TH P.M., ADAMS COUNTY, COLORADO.



MICHAEL GERARD STRATTON COLORADO PLS 38621
DATE OF SURVEY: 12/08/2021 (SECTION CONTROL)
DATE OF SURVEY: 04/08/2019 (WELL LOCATION)

SURFACE POINT				LANDING POINT/BEGIN HORIZONTAL COMPLETION ZONE				BOTTOM HOLE/END HORIZONTAL COMPLETION ZONE			
1169'	FSL	1587'	FEL	712'	FSL	860'	FWL	717'	FSL	2180'	FEL

SURFACE POINT					LANDING POINT		BOTTOM HOLE		
LATITUDE	LONGITUDE	ELEVATION	PDOP	OPERATOR	LATITUDE	LONGITUDE	LATITUDE	LONGITUDE	
39.961105	-104.720231	5081	1.408	J.PARKS	39.959849	-104.730319	39.959815	-104.778806	



0 1000
SCALE: 1"= 1000'
U.S. SURVEY FEET

LEGEND

- COMPUTED ALIQUOT CORNER
- ALIQUOT CORNER
- BOTTOM HOLE
- ALIQUOT WITNESS CORNER
- LANDING POINT
- PROPOSED WELL
- A.C. ALUMINUM CAP
- R.B. RANGE BOX
- CONC. CONCRETE
- I.C.V.B. IRRIGATION CONTROL VALVE BOX

NOTES:

- DISTANCES ARE MEASURED PERPENDICULAR TO NEAREST SECTION LINE AND ARE SHOWN ON THE SAME SIDE OF THE SECTION LINE WHERE THE WELL IS LOCATED.
- THIS MAP DOES NOT REPRESENT A MONUMENTED BOUNDARY SURVEY. SIXTEENTH CORNER LOCATIONS ARE COMPUTED, UNLESS OTHERWISE NOTED.
- BOTTOM HOLE LOCATIONS AND HORIZONTAL COMPLETION ZONE PROVIDED BY OTHERS.
- ALL REBAR AND CAPS ARE MEASURED IN INCHES.
- ELEVATIONS ARE BASED ON THE NORTH AMERICAN VERTICAL DATUM OF 1988 AS MEASURED BY GNSS OBSERVATIONS USING GEOID 12A.

BASIS OF BEARING:

THE SOUTH LINE OF THE SOUTHEAST QUARTER OF SECTION 13-T1S-R66W BEARS S89°28'40"W FOR 2637.03 FEET BETWEEN THE SOUTHEAST CORNER OF SECTION 13, MONUMENTED WITH A #6 REBAR WITH 2-1/2" ALUMINUM CAP STAMPED "PLS 28285" AND THE SOUTH QUARTER CORNER OF SECTION 13, MONUMENTED WITH A 2-1/2" PIPE WITH 3-1/4" BRASS CAP STAMPED "PLS 16415", BASED ON THE COLORADO STATE PLANE COORDINATE SYSTEM, NORTH ZONE, NORTH AMERICAN DATUM OF 1983(2011).

**LAMP
RYNEARSON**

4715 INNOVATION DR., STE. 100
FORT COLLINS, CO 80525
970.226.0342
LampRynearson.com



DESIGNER / DRAFTER
JAC
REVIEWER
MGS
PROJECT NUMBER
0218002.14
DATE
02/03/2023
SURFACE LOCATION
SW/4, SE/4 SEC 13 T1S R66W
BOOK AND PAGE

WELL LOCATION PLAT

WARBLER 13W-27-19