



Drill Hole 6 []

BM
41451263

**BEST IMAGE
AVAILABLE**

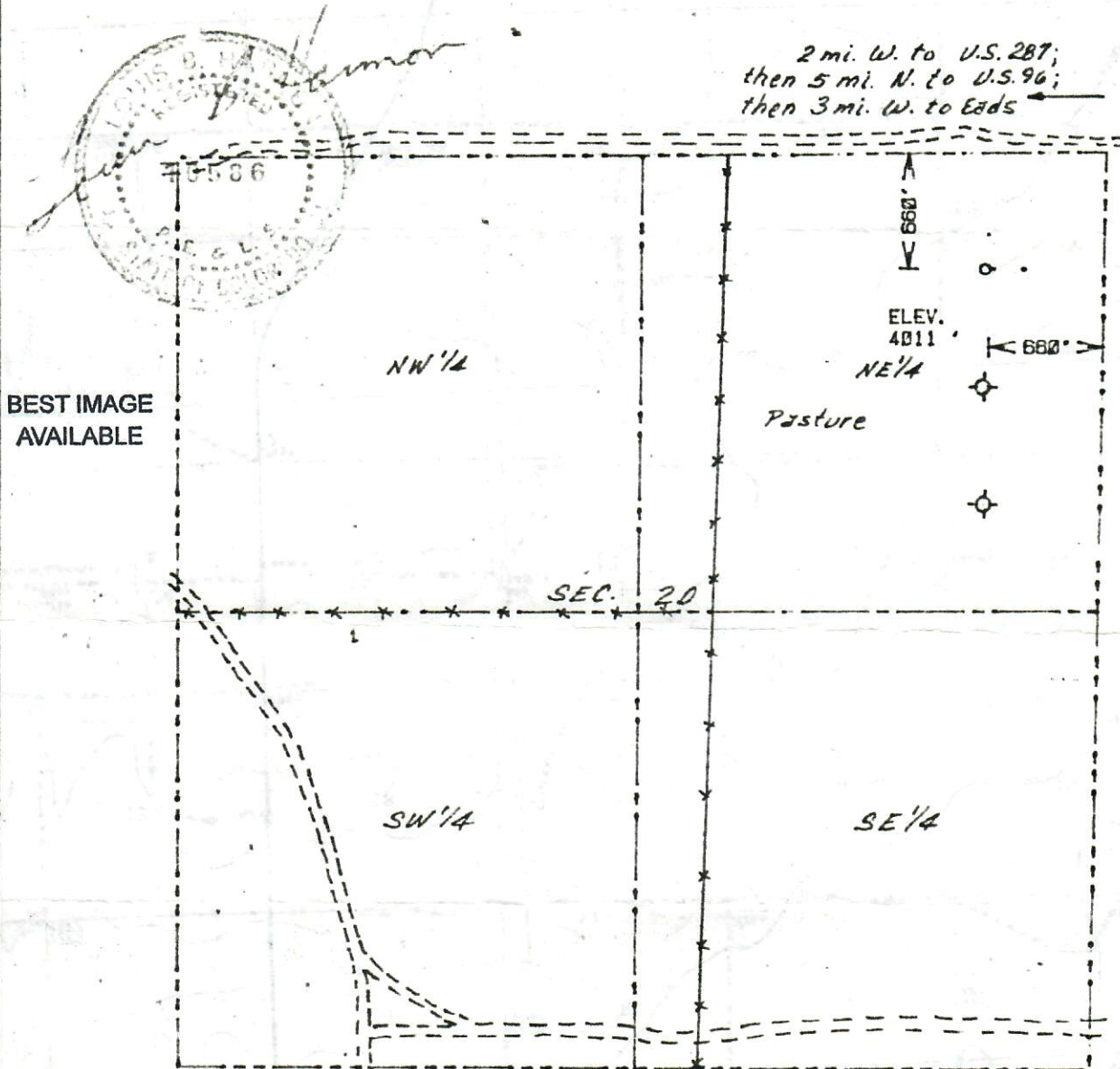


RECEIVED

FEB 01 1983

COLORADO, OIL & GAS CONS. COMM.

I hereby certify that the accompanying plat is an accurate representation of a correct survey showing the location of a proposed well. The location may be described as a point 660 feet south of the north line, and 660 feet west of the east line of Section 20, Township 19 S, Range 47 W of the 6th Principal Meridian, KIOWA County, COLORADO. The surface elevation at this point is 4011 feet above M.S.L.



BEST IMAGE AVAILABLE

2 mi. W. to U.S. 287;
then 5 mi. N. to U.S. 96;
then 3 mi. W. to Eads

BEST COPY AVAILABLE

SCALE - 1"=1000'

- SURVEYED POINT
- REFERENCE STAKE (200' N, 200' E)
- NE 1/4 SEC. 20, T 19 S, R 47 W

HARMON
ENGINEERING
SERVICES

KIOWA-STATE #1

TXO PRODUCTION CORP

KIOWA CO., COLORADO

26 JAN 1983