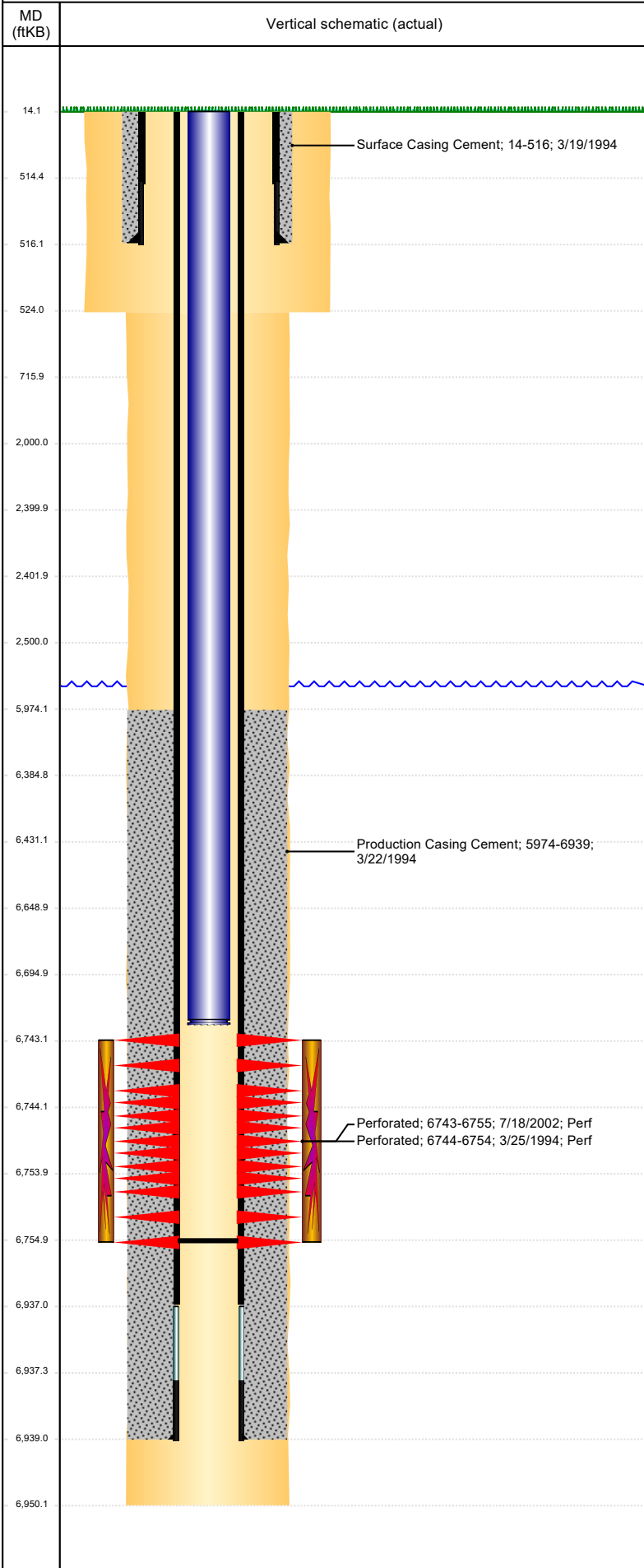




P&A Wellbore For State

Well Name: UPV 23-0814

Land, Original Hole, 2/3/2023 12:14:19 PM



Well Header									
Surface UWI 0512318053		Business Unit Rockies		Gov Auth Dist		Prod Tree Loc Land			
Orig. KB to Gnd (ft) 14.00		Original Spud Date 3/19/1994		Abandon Date		Well Sub-Status PR		High Pres N	
Comment comm w/2,7i4 9/98									
Surface Location (Congressional)									
Quarter 3 SE	Quarter 4 NE	Section 23	Township 4	Twnshp N N	Range 64	Rng E/W W	Latitude (°) 40.299670815	Longitude (°) -104.510703511	
Wellbore Sections									
Section Des		Hole Size (in)		Act Top (ftKB)		Act Btm (ftKB)			
SURFACE		12 1/4		14.0		524.0			
PRODUCTION		7 7/8		524.0		6,950.0			
Casing Strings									
Csg Des		Run Date		OD (in)	Wt/Len (lb/ft)	Grade	Top Depth (MD) (ftKB)	Set Depth (MD) (ftKB)	
Surface		3/20/1994		7	17.00	J-55	14	516	
Production Casing		3/22/1994		3 1/2	7.70	B-70	14	6939	
Cement									
Des				Start Date		Top (ftKB)		Btm (ftKB)	
Surface Casing Cement				3/19/1994		14.0		516.0	
Production Casing Cement				3/22/1994		5,974.0		6,939.0	
Zone Statuses									
Zone Name	Status Date	Status	Fluid Type	Job			Prod Method		
CODELL	7/30/2002	PR	Oil	RE-FRAC, 7/16/2002 00:00					
CODELL	3/16/2010	PR	Water				Flowing		
Perforation Data									
Linked Zone		Explosive Type	Entered Shot Total	Top (ftKB)	Btm (ftKB)	Date			
CODELL, Original Hole			48	6,743.0	6,755.0	7/18/2002			
CODELL, Original Hole			20	6,744.0	6,754.0	3/25/1994			
Stimulation Intervals									
Zone			Start Date		Top (ftKB)		Btm (ftKB)		
CODELL, Original Hole			7/24/2002		6,743.0		6,755.0		
CODELL, Original Hole			3/28/1994		6,744.0		6,754.0		
Other In Hole									
Run Date		Des		Make		OD (in)	Top (ftKB)	Btm (ftKB)	
Logs									
Date		Type				Depth Top (MD) (ftKB)	Btm (ftKB)		
3/23/1994		INDUCTION				512	6,949.0		
3/25/1994		CBL/CCL/GR				5,800	6,874.0		
2/18/2011		GYRO				10	6,700.0		
Plug Back Total Depths									
Date		Type		Com				PBTD (ftKB)	
3/25/1994		FILL		DEPTH LOGGER ON CBL.				6,874	
7/26/2002		FILL		C/O TO LAND TBG				6,755	