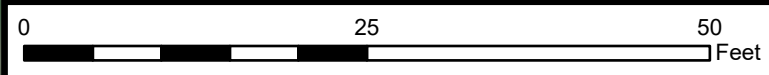
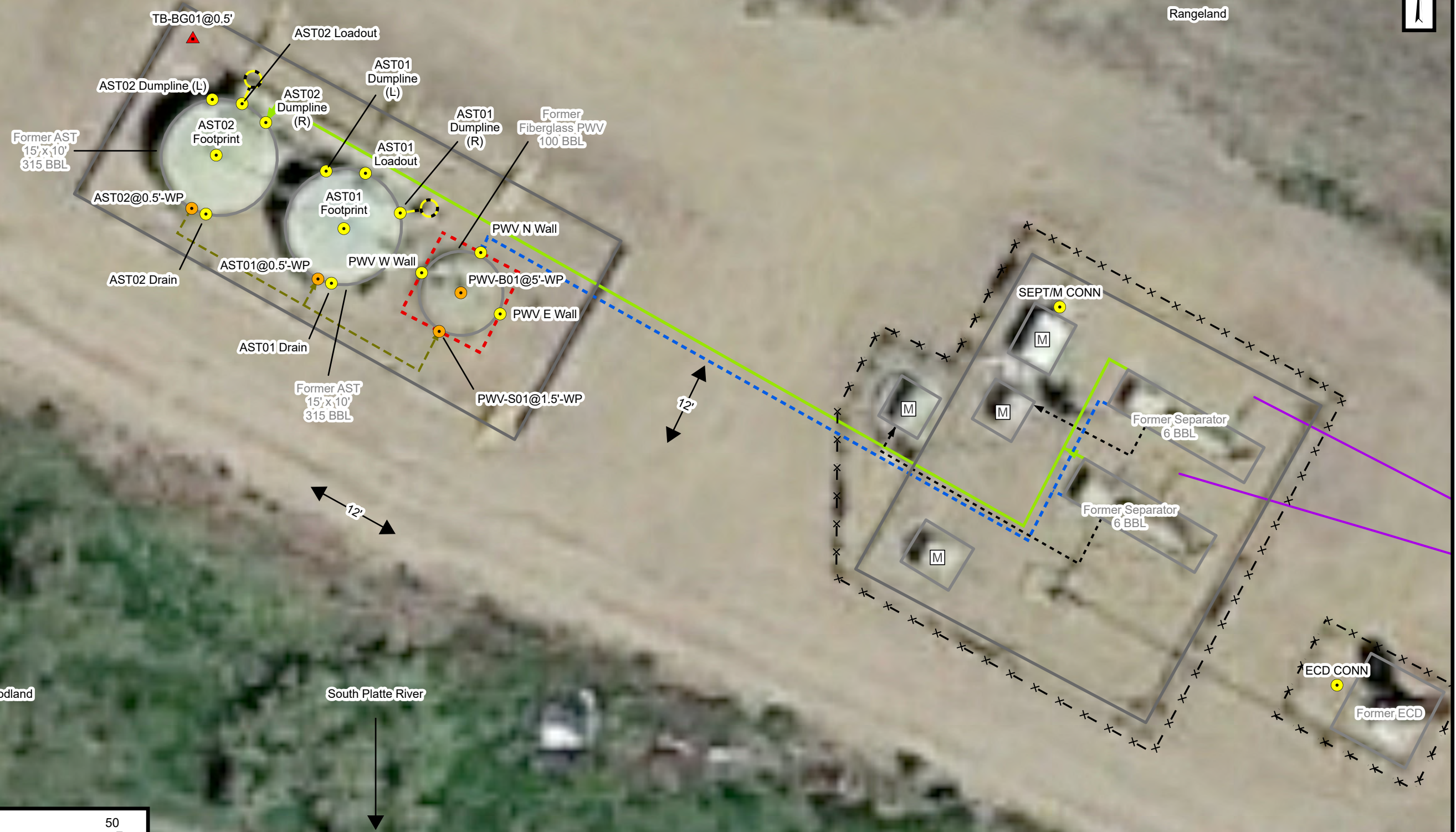


Legend

- Soil Sample Location
- Soil Screening Location
- Background Soil Sample
- Former Drain Line
- Former Gas Line
- Former Oil Dump
- Former Water Dump
- Former Flowline
- Former Drip Containment
- Former Metal Berm
- Former Fence
- Former Infrastructure
- Former Meter House
- Excavation Extent

Notes
BBL: Barrel
AST: Above Ground Storage Tank
PWV: Produced Water Vessel
ECD: Emission Control Device



Sources: Environmental Systems Research Institute (ESRI)

Excavation Site Map (6/16/2022)

Pope 11-35, Scottdale O SA Facility
Kerr-McGee Oil & Gas Onshore, LP
NWSW SEC 35-T4N-R67W
Weld County, CO
Project Number: 09A1417113



FIGURE
1A