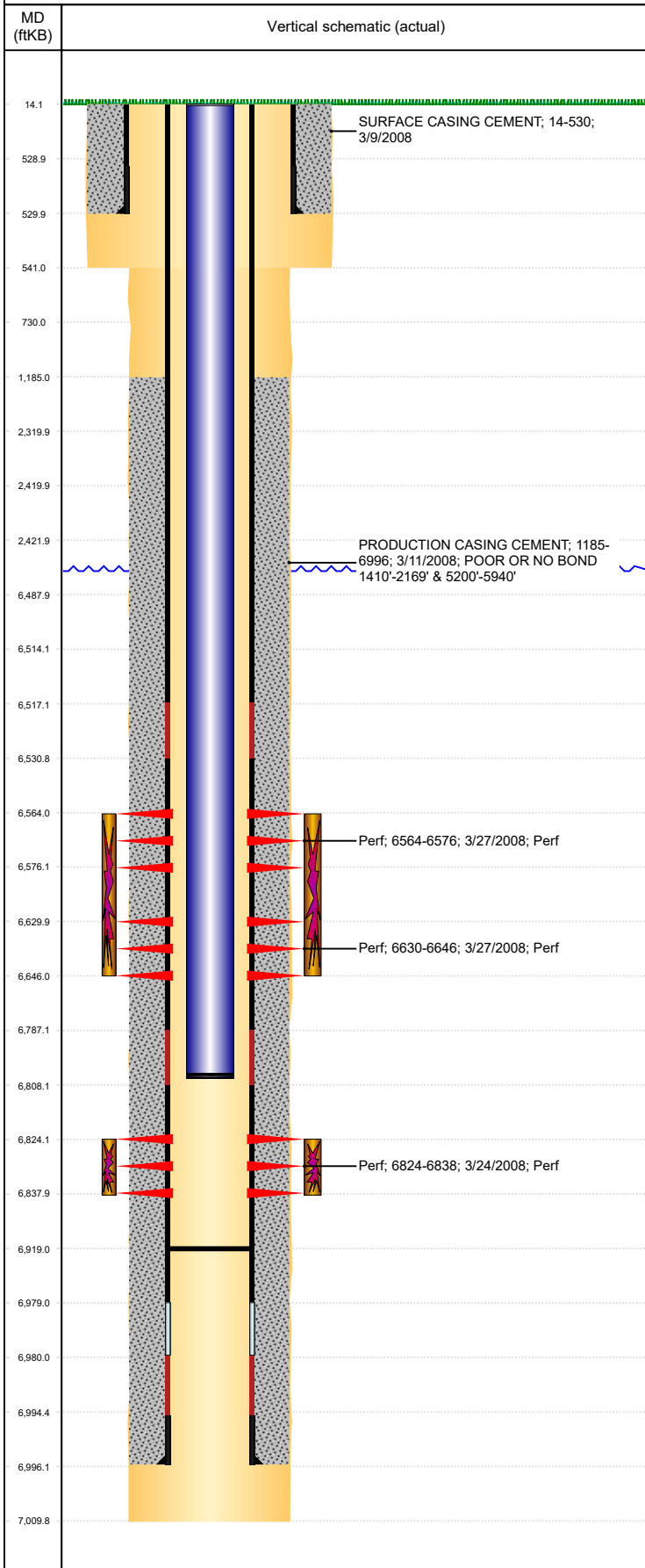




P&A Wellbore For State

Well Name: BORYS C22-20

Land, Original Hole, 2/8/2023 9:37:00 AM



Well Header									
Surface UWI 0512325498			Business Unit Rockies		Gov Auth Dist			Prod Tree Loc Land	
Orig. KB to Gnd (ft) 14.00		Original Spud Date 3/8/2008		Abandon Date		Well Sub-Status PR			High... N
Comment 318Ae LOCATION									
Surface Location (Congressional)									
Qtr 3 SE	Qtr 4 NW	Section 22	Twnshp 4	Twنش... N	Range 64	Rng E/... W	Latitude (°) 40.29837026 8	Longitude (°) -104.540976395	
Wellbore Sections									
Section Des			Hole Size (in)			Act Top (ftKB)		Act Btm (ftKB)	
SURFACE			12 1/4			14.0		541.0	
PRODUCTION			7 7/8			541.0		7,010.0	
Casing Strings									
Csg Des			Run Date		OD (in)	Wt/Len (lb/ft)	Grade	Top Depth (MD) (ftKB)	Set Depth (MD) (ftKB)
Surface			3/9/2008		8 5/8	24.00	J-55	14	530
Production Casing			3/11/2008		4 1/2	11.60	M-80	14	6996
Cement									
Des					Start Date		Top (ftKB)		Btm (ftKB)
SURFACE CASING CEMENT					3/9/2008		14.0		530.0
PRODUCTION CASING CEMENT					3/11/2008		1,185.0		6,996.0
Zone Statuses									
Zone Name		Status Date	Status	Fluid Type	Job			Prod Method	
NIOBRARA		5/1/2008	PR		DRILLING/COMPLETION - ORIGINAL, 3/7/2008...				
CODELL		5/1/2008	PR		DRILLING/COMPLETION - ORIGINAL, 3/7/2008...				
Perforation Data									
Linked Zone			Explosive Type	Entered Shot Total	Top (ftKB)		Btm (ftKB)		Date
NIOBRARA, Original Hole			A	64	6,564.0		6,576.0		3/27/2008
NIOBRARA, Original Hole			B	48	6,630.0		6,646.0		3/27/2008
CODELL, Original Hole				56	6,824.0		6,838.0		3/24/2008
Stimulation Intervals									
Zone				Start Date			Top (ftKB)		Btm (ftKB)
NIOBRARA, Original Hole				3/27/2008			6,564.0		6,646.0
CODELL, Original Hole				3/27/2008			6,824.0		6,838.0
Other In Hole									
Run Date		Des			Make		OD (in)	Top (ftKB)	Btm (ftKB)
Logs									
Date		Type					Depth Top (MD) (ftKB)		Btm (ftKB)
3/11/2008		Caliper/Comp. Density/Neutron/GR/SP/ML					2,490		6,990.0
3/11/2008		DIL/GR/SP/Caliper					530		7,010.0
3/20/2008		CBL/CCL/GR					1,048		6,982.0
3/17/2011		GYRO					10		6,784.0
Plug Back Total Depths									
Date		Type		Com					PBTD (ftKB)
3/11/2008		FLOAT COLLAR							6,980
12/17/2008		PLUG REMNANTS							6,919