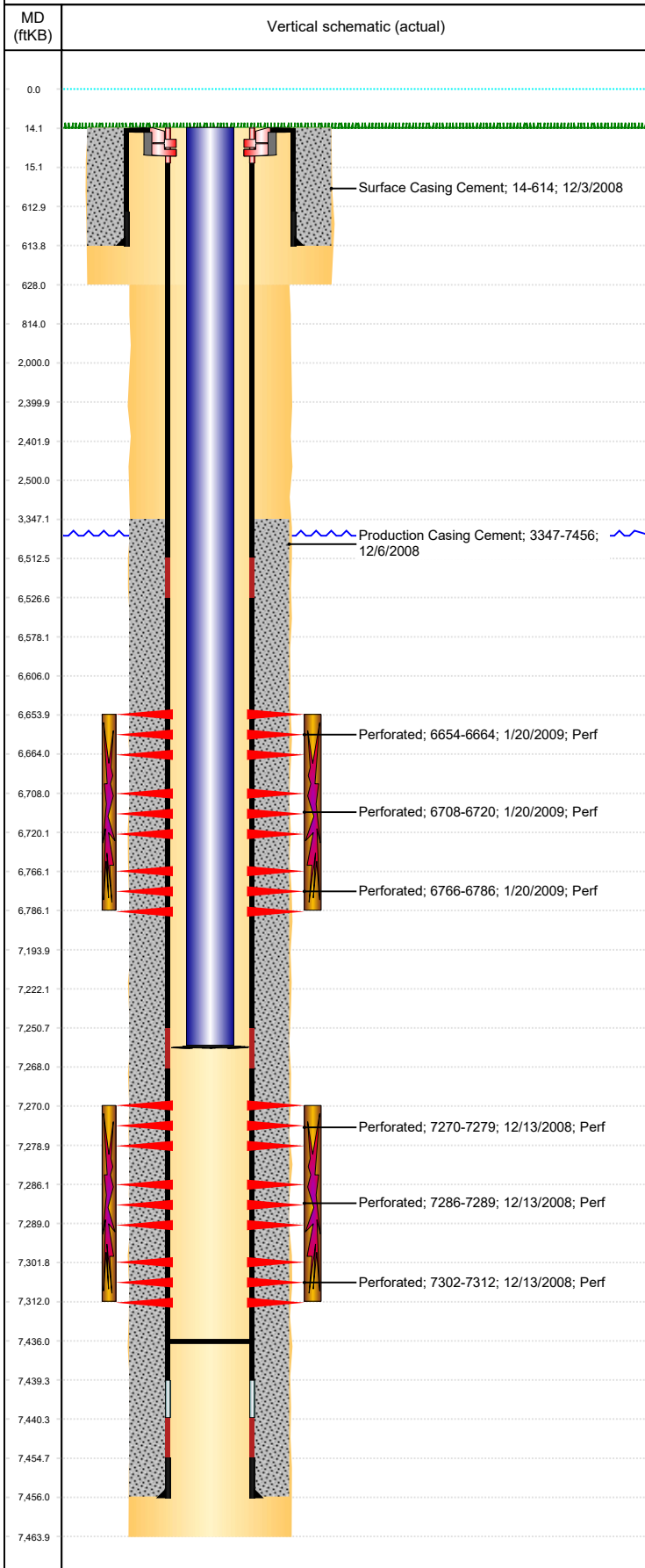




P&A Wellbore For State

Well Name: BOOTH C35-27

Land, Original Hole, 2/7/2023 4:36:10 PM



Well Header									
Surface UWI 0512329316			Business Unit Rockies			Gov Auth Dist		Prod Tree Loc Land	
Orig. KB to Gnd (ft) 14.00		Original Spud Date 12/2/2008		Abandon Date		Well Sub-Status SI			High... N
Comment 318Ae LOCATION.									
Surface Location (Congressional)									
Qtr 3 NW	Qtr 4 NE	Section 35	Twnshp 4	Twنش... N	Range 64	Rng E/... W	Latitude (°) 40.27595142 2	Longitude (°) -104.513481839	
Wellbore Sections									
Section Des			Hole Size (in)			Act Top (ftKB)		Act Btm (ftKB)	
SURFACE			12 1/4			14.0		628.0	
PRODUCTION			7 7/8			628.0		7,464.0	
Casing Strings									
Csg Des			Run Date		OD (in)	Wt/Len (lb/ft)	Grade	Top Depth (MD) (ftKB)	Set Depth (MD) (ftKB)
Surface			12/3/2008		8 5/8	24.00	J-55	14	614
Production Casing			12/6/2008		4 1/2	11.60	M-80	0	7456.1
Cement									
Des					Start Date		Top (ftKB)		Btm (ftKB)
Surface Casing Cement					12/3/2008		14.0		614.0
Production Casing Cement					12/6/2008		3,347.0		7,456.0
Zone Statuses									
Zone Name		Status Date	Status	Fluid Type	Job				Prod Method
CODELL		8/25/2009	PR		DRILLING/COMPLETION - ORIGINAL, 12/2/2008...				Flowing
NIOBRARA		2/11/2009	PR						DRILLING/COMPLETION - ORIGINAL, 12/2/2008...
NIOBRARA		8/25/2009	PR		Flowing				
J SAND		2/11/2009	PR		Flowing				
J SAND		8/25/2009	PR						Flowing
Perforation Data									
Linked Zone			Explosive Type	Entered Shot Total	Top (ftKB)		Btm (ftKB)		Date
NIOBRARA, Original Hole			A	20	6,654.0		6,664.0		1/20/2009
NIOBRARA, Original Hole			B	24	6,708.0		6,720.0		1/20/2009
NIOBRARA, Original Hole			C	40	6,766.0		6,786.0		1/20/2009
J SAND, Original Hole			01	36	7,270.0		7,279.0		12/13/2008
J SAND, Original Hole			02	12	7,286.0		7,289.0		12/13/2008
J SAND, Original Hole			03	40	7,302.0		7,312.0		12/13/2008
Stimulation Intervals									
Zone				Start Date		Top (ftKB)		Btm (ftKB)	
NIOBRARA, Original Hole				1/20/2009		6,654.0		6,786.0	
J SAND, Original Hole				1/20/2009		7,270.0		7,312.0	
Other In Hole									
Run Date		Des			Make		OD (in)	Top (ftKB)	Btm (ftKB)
Logs									
Date		Type					Depth Top (MD) (ftKB)		Btm (ftKB)
12/6/2008		Caliper/Comp. Density/Neutron/GR/SP/ML					2,475		7,464.0
12/6/2008		DIL/GR/SP/Caliper					616		7,464.0
12/13/2008		CBL/CCL/GR					3,180		7,438.0
2/22/2011		GYRO					10		7,200.0
Plug Back Total Depths									
Date		Type			Com				PBTD (ftKB)
12/6/2008		FLOAT COLLAR			C/O WITH BLADE BIT & N2				7,440
3/26/2009		PLUG REMNANTS							7,436