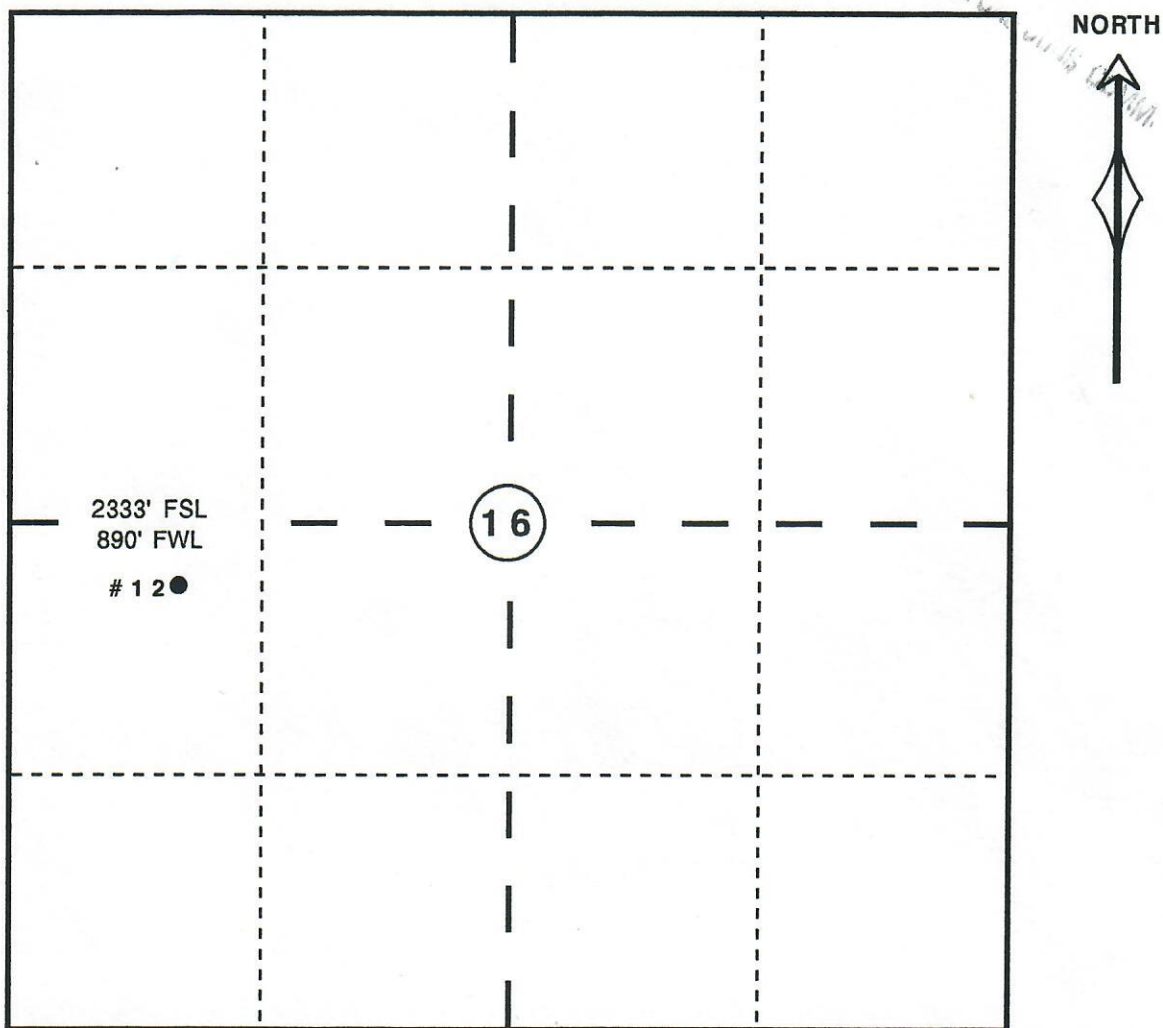


CULVER MC 16-12  
SECTION 16 - TOWNSHIP 1 NORTH - RANGE 69 WEST  
OF THE SIXTH PRINCIPAL MERIDIAN  
BOULDER COUNTY, COLORADO

RECEIVED  
MAY 1 11  
COLO. OIL & GAS



SCALE: 1 INCH = 1000'

00037500

G E R R I T Y  
O I L & G A S  
C O R P O R A T I O N