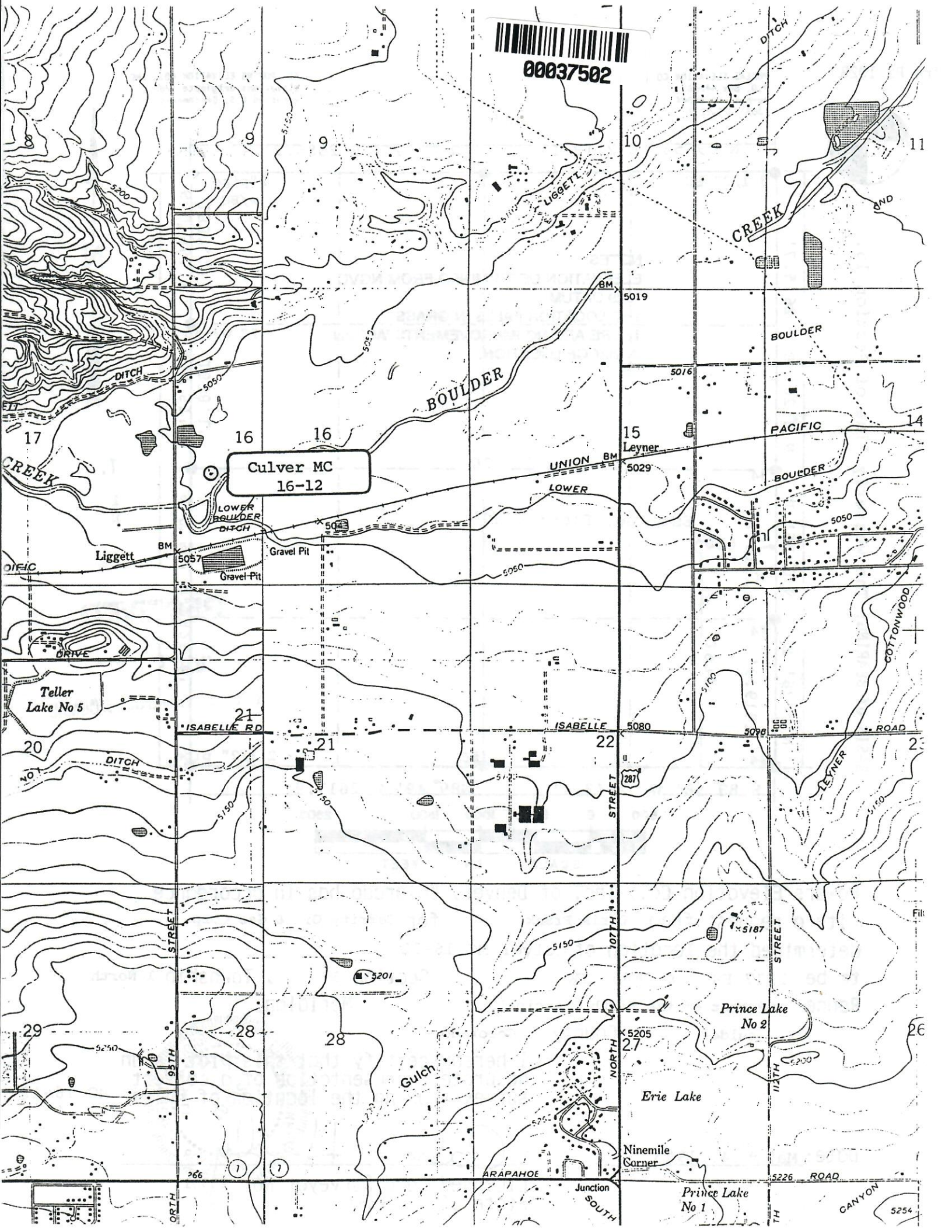




00037502



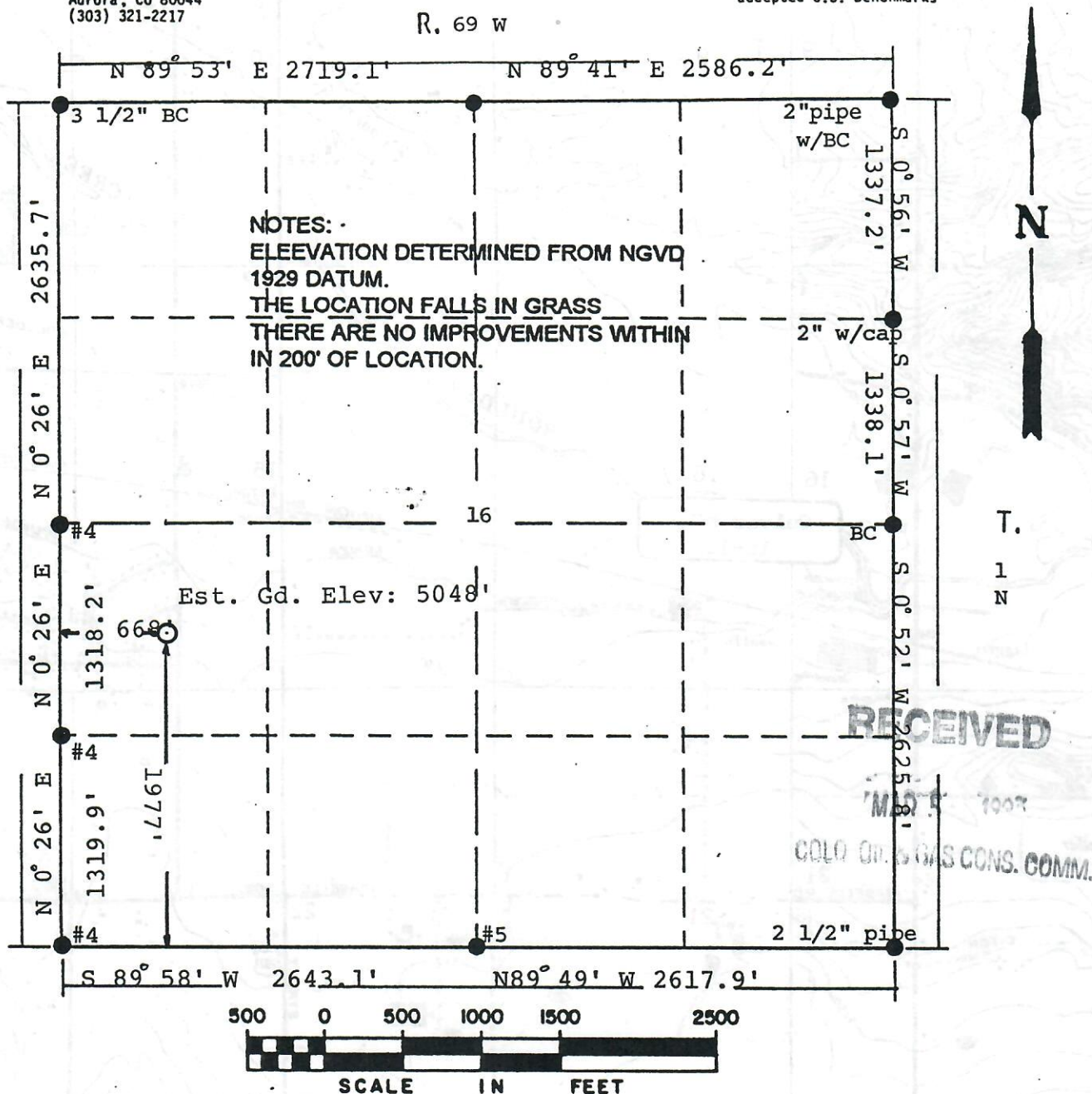


POWERS ELEVATION CO., INC.  
P.O. Box 440889  
Aurora, CO 80044  
(303) 321-2217

ALL POWERS ELEVATION CO., INC.  
elevations originate from  
accepted U.S. Benchmarks



BASIS of BEARING: The westerly line of Section 16.



Powers Elevation Co., Inc. of Denver, Colorado has in accordance  
with a request from Chris Frank for Gerrity Oil & Gas Corp.

determined the location of Culver MC 16-12

to be 1977 FS & 668 FW

Range 69 West of the Sixth Principal

Boulder

County, Colorado

Section 16, Township 1 North  
Meridian,

I hereby certify that this plat is an  
accurate representation of a correct  
survey showing the location of Culver MC 16-12

Date: March 4, 1993

*Calvin H. Harty*  
Licensed Land Surveyor No. 25501  
State of Colorado