

M PS 102B

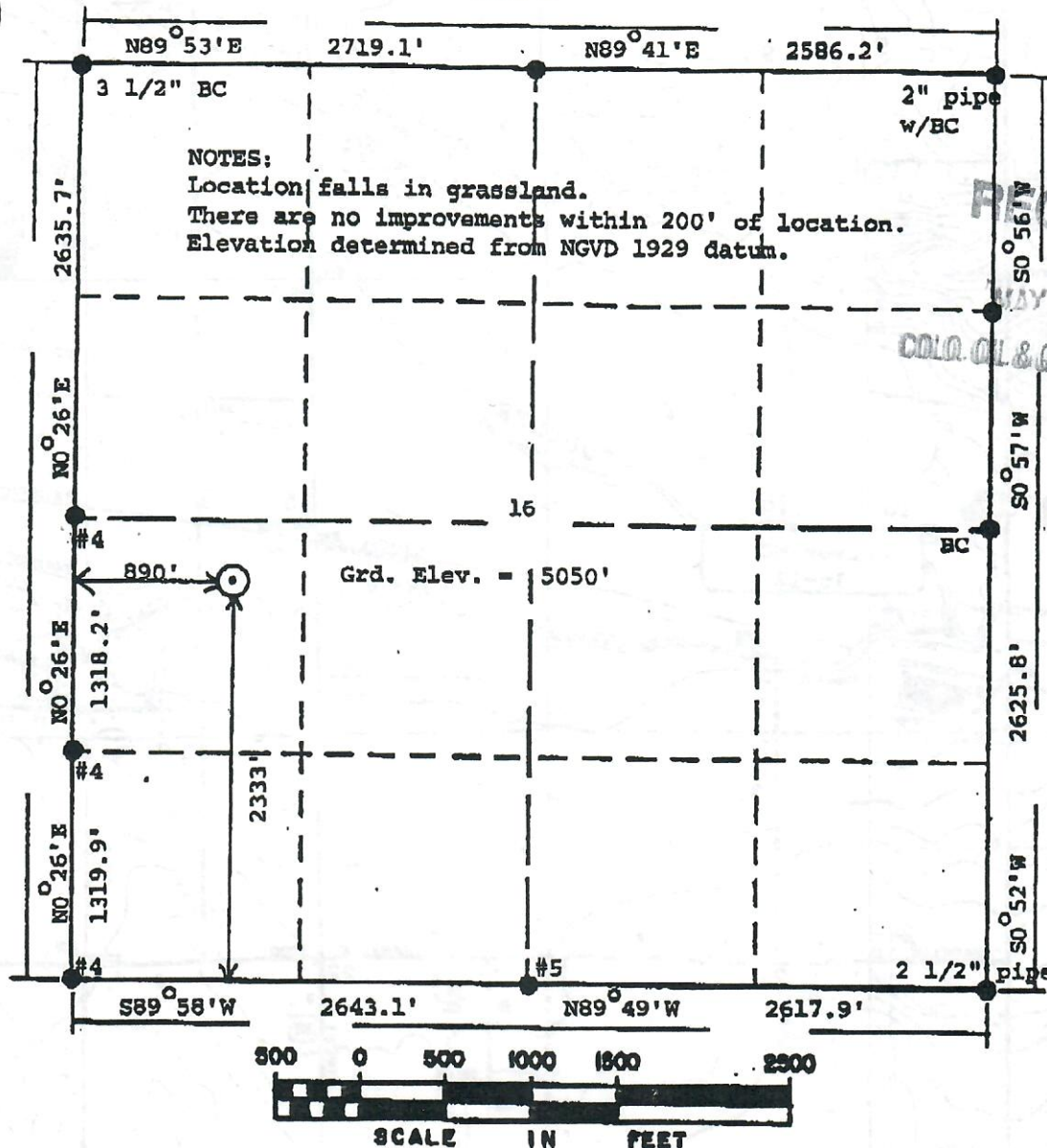
POWERS ELEVATION CO., INC.
P.O. Box 440889
Aurora, CO 80044
(303) 321-2217

ALL POWERS ELEVATION CO., INC.
elevations originate from
accepted U.S. Benchmarks

R.69 W



BASIS OF HEARING: The westerly line of Section 16.



Powers Elevation Co., Inc. of Denver, Colorado has in accordance
with a request from Lorna Jung for Gerrity Oil & Gas Corp.
determined the location of Culver MC 16-12

to be 2333' FS & 890' FW

Section 16 , Township 1 North
Meridian,

Range 69 West of the Sixth Principal

Boulder County, Colorado

I hereby certify that this is an
accurate representation of a correct
survey showing the location of 23501
Culver MC 16-12

Date: March 4, 1993.

Restaked 5/7/93

Licensed Land Surveyor No. 23501
State of Colorado



00037498

