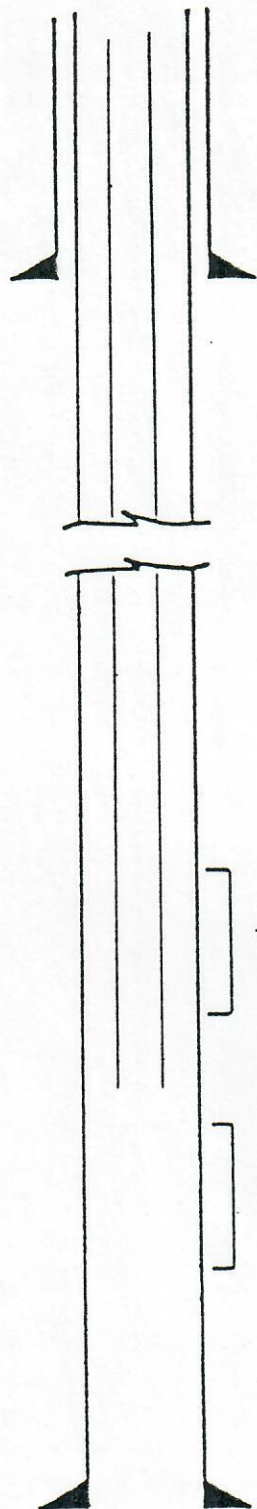




00052307



ERIE EIGHT "E" UNIT #1
SESE Section 24-T1N-R69W
Boulder County, Colorado

7912' - 7929'
CODELL PERFS

8356' - 8366'
"J" SAND PERFS

RECEIVED

APR 29 1991

COLO.OIL & GAS CONS.COMM.

COMMINGLED PRODUCTION
WELLBORE SCHEMATIC

Vessels Oil & Gas Company