



FORM F-106



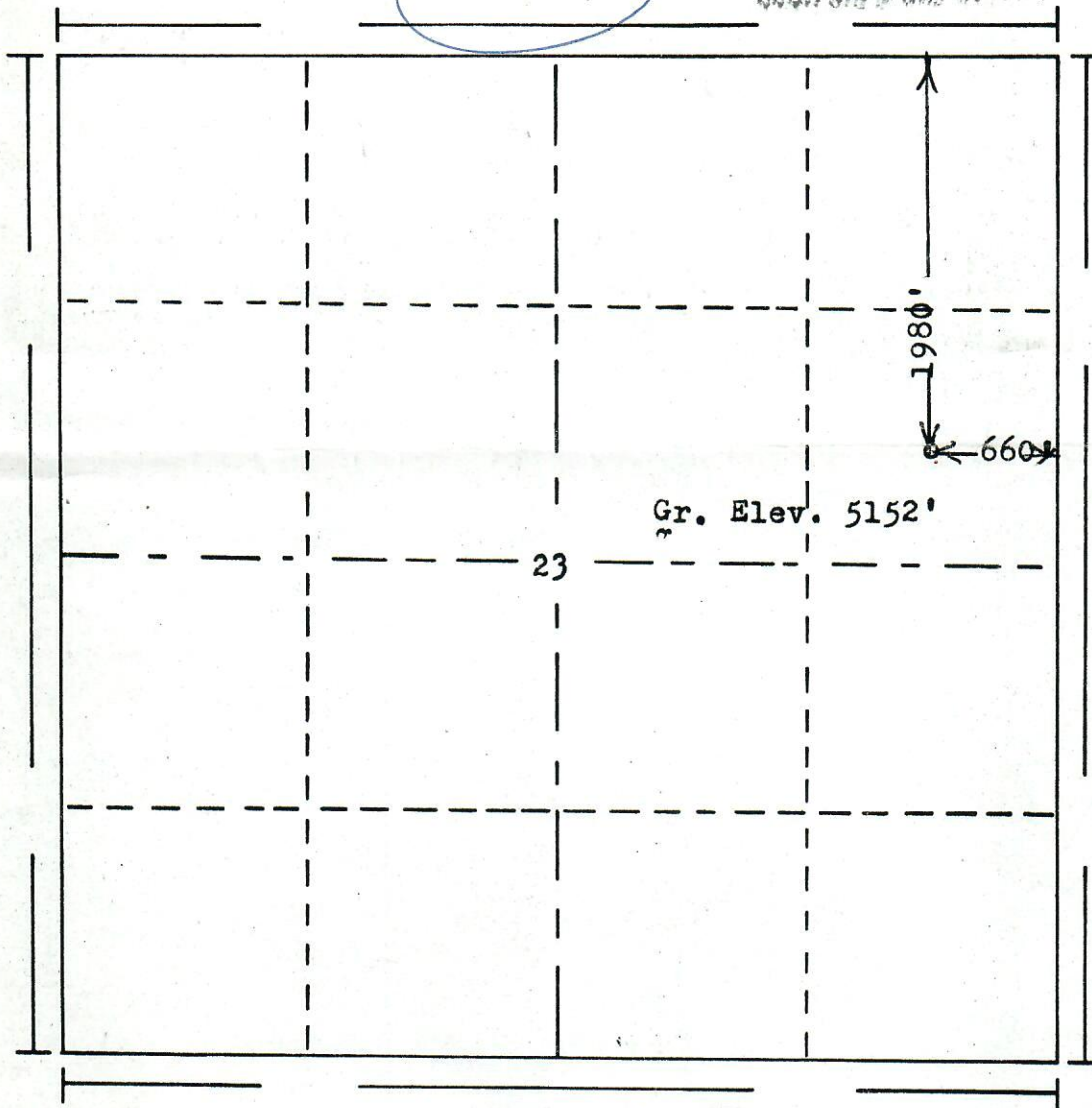
00052125

R. 69W

RECEIVED

OCT 13 1981

LAND, OIL & GAS RIGHTS, BOUNDARY

T.
1
N

Scale... 1" = 1000'

Powers Elevation of Denver, Colorado

has in accordance with a request from Mr. Dunning
for Martin Exploration Management Corp.

determined the location of No. 1 Young
to be CSE NE Section 23 Township 1N
Range 69W of the 6th Principal Meridian
Boulder County, Nebraska Colo

I hereby certify that this plat is an
accurate representation of a correct
survey showing the location of

Date: 6-4-81

Bruce D. Hanning
Licensed Land Surveyor No. 2853
State of Colorado