



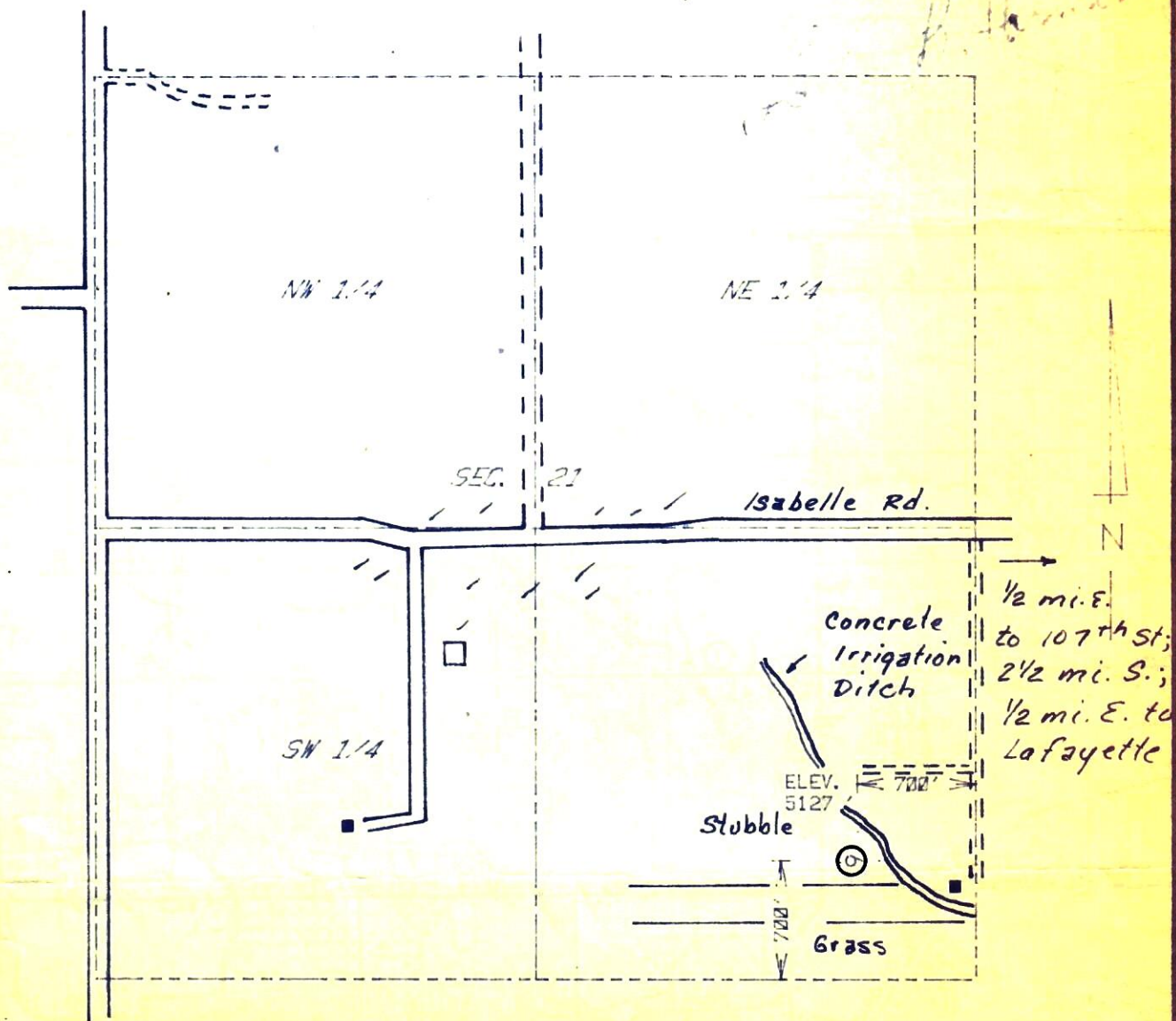
00062110

RECEIVED

AUG 31 1984

COLO. OIL & GAS CONS. COMM.

The accompanying plat is an accurate representation showing the location of a proposed well. This location may be described as a point 700 feet north of the south line, and 700 feet west of the east line of Section 21, Township 1 N Range 69 W of the 6th P.M., BOULDER County, COLORADO. The surface elevation at this point is 5127 feet m.s.l.



SCALE - 1"=1000'

- SURVEYED POINT
- REFERENCE STAKE (169 'N, 129 'E)
- SE 1/4 SEC. 21, T 1 N, R 69 W

HARMON
ENGINEERING
SERVICES

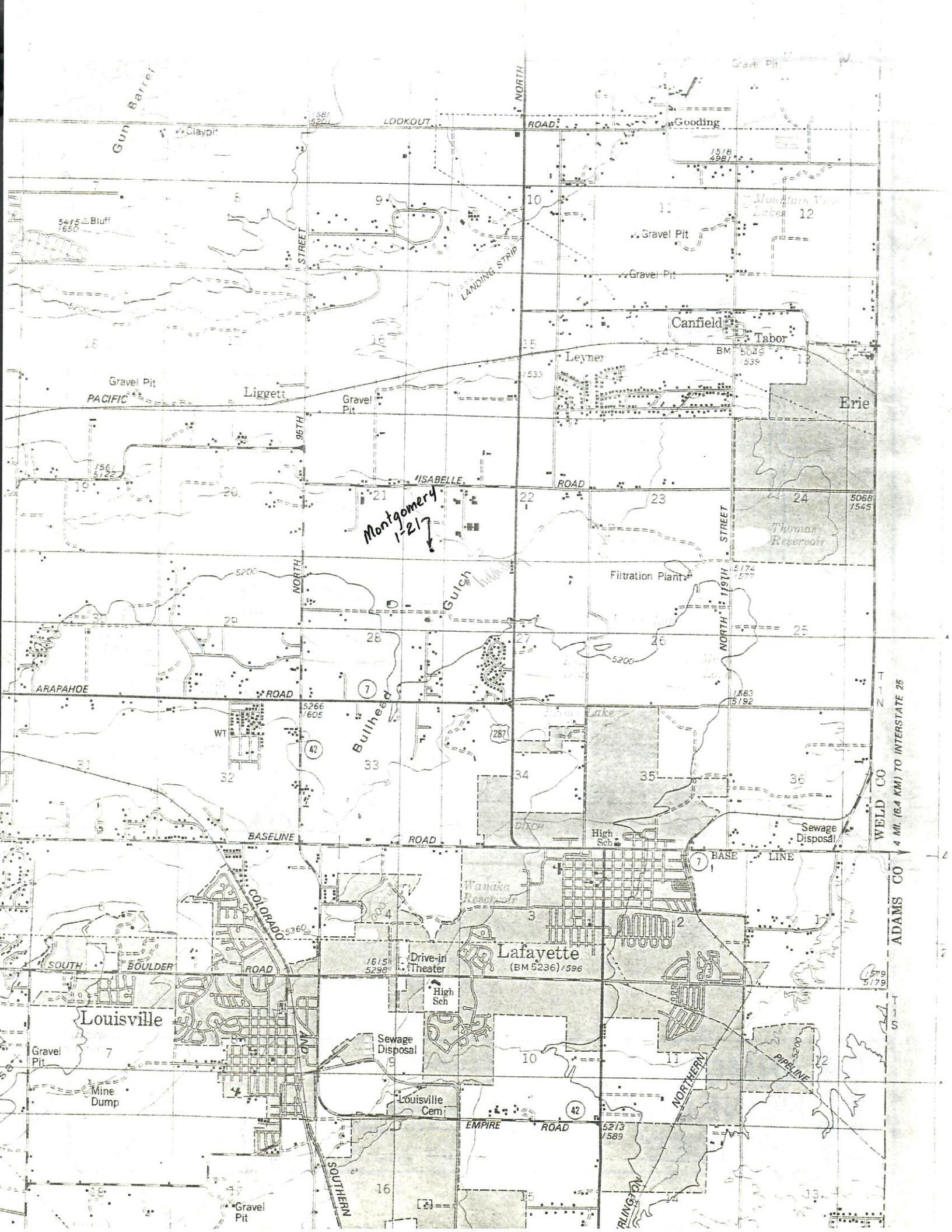
MONTGOMERY #1-21

NDARKO RESOURCES INC

BOULDER CO., COLORADO

27 AUGUST 1984

4249-101
(B60 P85)



Montgomery
1-217

T 1 N
WELD CO
ADAMS CO
4 MI. (6.4 KM) TO INTERSTATE 25

T 1 S