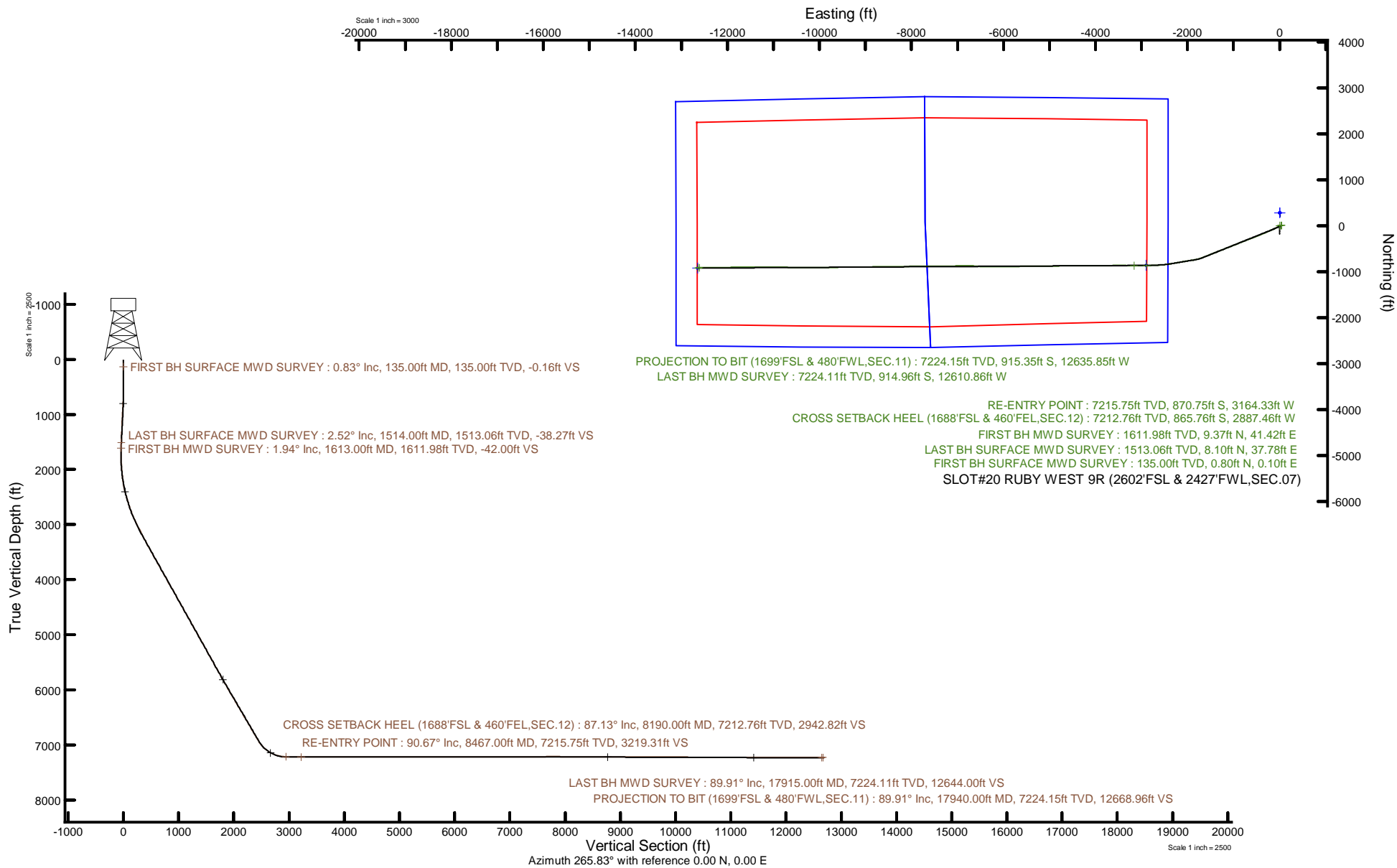


# BAYSWATER E&P, LLC

Location: COLORADO Slot: SLOT#20 RUBY WEST 9R (2602'FSL & 2427'FWL,SEC.07)  
 Field: WELD COUNTY (NAD83/TRUE NORTH) Well: RUBY WEST 9R  
 Facility: SEC.07-T07N-R65W Wellbore: RUBY WEST 9R PWB



Plot reference wellpath is RUBY WEST 9R PWB Rev8.0	Grid System: NAD83 / Lambert Colorado SP, Northern Zone (501), US feet
True vertical depths are referenced to Ensign 153 (23) (KB)	North Reference: True north
Reference wellpath measured depths are referenced to Ensign 153 (23) (KB)	Scale: True distance
Ensign 153 (23) (KB) to Mean Sea Level: 4946 feet	Coordinates are in feet referenced to Slot
Mean Sea Level to Ground level (At Slot: SLOT#20 RUBY WEST 9R (2602'FSL & 2427'FWL,SEC.07)): -4923 feet	Depths are in feet
Offset wellpath MDs are referenced to each path's default MD datum	Created by: painsetr on 2022-11-15; Database: WellArchitectDB



REFERENCE WELLPATH IDENTIFICATION			
Operator	BAYSWATER E&P, LLC	Well	RUBY WEST 9R
Field	WELD COUNTY (NAD83/TRUE NORTH)	API/Legal	
Facility	SEC.07-T07N-R65W	Wellbore	RUBY WEST 9R AWB
Slot	SLOT#20 RUBY WEST 9R (2602'FSL & 2427'FWL,SEC.07)		

REPORT SETUP INFORMATION			
Projection System	NAD83 / Lambert Colorado SP, Northern Zone (501), US feet	Software System	WellArchitect® 6.0
North Reference	True	User	Painsetr
Scale	0.999974	Report Generated	1/17/2023 at 10:17:47 AM
Convergence at slot	0.51° East	Database	WellArchitectDB

WELLPATH LOCATION						
	Local coordinates		Grid coordinates		Geographic coordinates	
	North[ft]	East[ft]	Easting[US ft]	Northing[US ft]	Latitude	Longitude
Slot Location	-285.27	-2.50	3220206.95	1458651.39	40.5896940°	-104.7071110°
Facility Reference Pt			3220206.89	1458936.65	40.5904770°	-104.7071020°
Field Reference Pt			3174587.00	1430859.71	40.5144139°	-104.8720750°

WELLPATH DATUM			
Calculation method	Minimum curvature	Ensign 153 (23') (KB) to Facility Vertical Datum	4946.00ft
Horizontal Reference Pt	Slot	Ensign 153 (23') (KB) to Mean Sea Level	4946.00ft
Vertical Reference Pt	Ensign 153 (23') (KB)	Ensign 153 (23') (KB) to Ground Level at Slot (SLOT#20 RUBY WEST 9R (2602'FSL & 2427'FWL,SEC.07))	23.00ft
MD Reference Pt	Ensign 153 (23') (KB)	Section Origin	N 0.00, E 0.00 ft
Field Vertical Reference	Mean Sea Level	Section Azimuth	265.83°

REFERENCE WELLPATH IDENTIFICATION			
Operator	BAYSWATER E&P, LLC	Well	RUBY WEST 9R
Field	WELD COUNTY (NAD83/TRUE NORTH)	API/Legal	
Facility	SEC.07-T07N-R65W	Wellbore	RUBY WEST 9R AWP
Slot	SLOT#20 RUBY WEST 9R (2602'FSL & 2427'FWL,SEC.07)		

WELLPATH DATA (205 stations) † = interpolated, ‡ = extrapolated station												
MD [ft]	Inclination [°]	Azimuth [°]	TVD [ft]	Vert Sect [ft]	North [ft]	East [ft]	Grid East [US ft]	Grid North [US ft]	Latitude	Longitude	DLS ["/100ft]	Comments
0.00†	0.000	7.410	0.00	0.00	0.00	0.00	3220206.95	1458651.39	40.5896940	-104.7071110	0.00	
23.00	0.000	7.410	23.00	0.00	0.00	0.00	3220206.95	1458651.39	40.5896940	-104.7071110	0.00	
135.00	0.830	7.410	135.00	-0.16	0.80	0.10	3220207.04	1458652.19	40.5896962	-104.7071106	0.74	FIRST BH SURFACE MWD SURVEY
226.00	1.120	4.370	225.98	-0.43	2.34	0.26	3220207.18	1458653.73	40.5897004	-104.7071101	0.32	
317.00	0.980	4.010	316.97	-0.67	4.01	0.38	3220207.29	1458655.40	40.5897050	-104.7071096	0.15	
406.00	0.900	358.520	405.96	-0.81	5.47	0.41	3220207.31	1458656.85	40.5897090	-104.7071095	0.14	
496.00	0.150	278.440	495.95	-0.73	6.19	0.28	3220207.17	1458657.58	40.5897110	-104.7071100	0.99	
585.00	0.320	234.160	584.95	-0.40	6.06	-0.04	3220206.85	1458657.45	40.5897106	-104.7071111	0.27	
674.00	1.170	98.300	673.95	-1.08	5.78	0.66	3220207.55	1458657.18	40.5897099	-104.7071086	1.59	
764.00	2.480	97.560	763.90	-3.88	5.40	3.50	3220210.40	1458656.81	40.5897088	-104.7070984	1.46	
853.00	3.000	100.910	852.80	-8.02	4.70	7.70	3220214.60	1458656.16	40.5897069	-104.7070833	0.61	
943.00	3.300	99.910	942.66	-12.80	3.81	12.56	3220219.47	1458655.31	40.5897045	-104.7070658	0.34	
1033.00	3.160	94.620	1032.52	-17.77	3.16	17.58	3220224.50	1458654.71	40.5897027	-104.7070477	0.37	
1122.00	2.310	80.460	1121.42	-21.98	3.26	21.80	3220228.71	1458654.84	40.5897030	-104.7070325	1.21	
1210.00	2.450	74.890	1209.34	-25.59	4.05	25.36	3220232.27	1458655.66	40.5897051	-104.7070197	0.31	
1300.00	2.540	70.110	1299.25	-29.40	5.23	29.10	3220235.99	1458656.87	40.5897084	-104.7070062	0.25	
1390.00	2.400	69.790	1389.17	-33.13	6.56	32.74	3220239.62	1458658.24	40.5897120	-104.7069931	0.16	
1479.00	2.450	75.710	1478.09	-36.79	7.67	36.33	3220243.21	1458659.38	40.5897151	-104.7069802	0.29	
1514.00	2.520	71.110	1513.06	-38.27	8.10	37.78	3220244.66	1458659.83	40.5897162	-104.7069750	0.60	LAST BH SURFACE MWD SURVEY
1613.00	1.940	70.440	1611.98	-42.00	9.37	41.42	3220248.28	1458661.13	40.5897197	-104.7069619	0.59	FIRST BH MWD SURVEY
1702.00	0.760	57.980	1700.96	-43.97	10.19	43.34	3220250.19	1458661.96	40.5897220	-104.7069549	1.36	
1791.00	2.310	242.640	1789.94	-42.84	9.68	42.25	3220249.11	1458661.44	40.5897206	-104.7069589	3.45	
1880.00	3.760	241.240	1878.81	-38.54	7.45	38.10	3220244.97	1458659.17	40.5897144	-104.7069738	1.63	
1970.00	4.940	241.610	1968.55	-32.32	4.19	32.10	3220239.01	1458655.86	40.5897055	-104.7069954	1.31	
2059.00	6.090	240.260	2057.14	-24.57	0.02	24.63	3220231.58	1458651.63	40.5896941	-104.7070223	1.30	
2148.00	7.380	240.400	2145.52	-15.15	-5.14	15.56	3220222.55	1458646.38	40.5896799	-104.7070550	1.45	
2237.00	8.340	247.270	2233.69	-3.86	-10.46	4.64	3220211.68	1458640.97	40.5896653	-104.7070943	1.51	
2327.00	12.790	246.510	2322.14	11.73	-16.96	-10.53	3220196.57	1458634.33	40.5896475	-104.7071489	4.95	
2416.00	14.740	245.970	2408.58	31.68	-25.50	-29.90	3220177.27	1458625.62	40.5896240	-104.7072187	2.20	
2506.00	17.700	245.550	2494.99	55.29	-35.82	-52.82	3220154.45	1458615.09	40.5895957	-104.7073012	3.29	

REFERENCE WELLPATH IDENTIFICATION			
Operator	BAYSWATER E&P, LLC	Well	RUBY WEST 9R
Field	WELD COUNTY (NAD83/TRUE NORTH)	API/Legal	
Facility	SEC.07-T07N-R65W	Wellbore	RUBY WEST 9R AWB
Slot	SLOT#20 RUBY WEST 9R (2602'FSL & 2427'FWL,SEC.07)		

WELLPATH DATA (205 stations)												
MD [ft]	Inclination [°]	Azimuth [°]	TVD [ft]	Vert Sect [ft]	North [ft]	East [ft]	Grid East [US ft]	Grid North [US ft]	Latitude	Longitude	DLS [°/100ft]	Comments
2595.00	17.660	246.140	2579.78	80.69	-46.88	-77.48	3220129.89	1458603.81	40.5895653	-104.7073900	0.21	
2684.00	19.170	245.150	2664.22	107.07	-58.49	-103.09	3220104.39	1458591.98	40.5895335	-104.7074822	1.73	
2774.00	21.170	245.530	2748.70	136.14	-71.43	-131.29	3220076.30	1458578.79	40.5894979	-104.7075837	2.23	
2863.00	24.610	245.140	2830.68	168.56	-85.88	-162.74	3220044.98	1458564.06	40.5894583	-104.7076970	3.87	
2953.00	26.220	245.030	2911.97	204.68	-102.15	-197.77	3220010.10	1458547.47	40.5894136	-104.7078231	1.79	
3043.00	27.700	246.430	2992.18	243.00	-118.91	-234.97	3219973.05	1458530.38	40.5893676	-104.7079570	1.79	
3133.00	27.520	246.530	3071.93	282.36	-135.56	-273.22	3219934.96	1458513.39	40.5893219	-104.7080947	0.21	
3223.00	27.830	247.070	3151.64	321.88	-152.02	-311.64	3219896.69	1458496.59	40.5892767	-104.7082330	0.44	
3312.00	28.840	248.260	3229.97	362.01	-168.07	-350.71	3219857.76	1458480.19	40.5892327	-104.7083737	1.30	
3402.00	30.210	247.630	3308.29	404.22	-184.73	-391.81	3219816.81	1458463.17	40.5891870	-104.7085217	1.56	
3491.00	30.380	247.410	3385.13	446.84	-201.89	-433.30	3219775.48	1458445.63	40.5891398	-104.7086711	0.23	
3581.00	30.010	247.450	3462.92	489.79	-219.27	-475.10	3219733.84	1458427.89	40.5890921	-104.7088216	0.41	
3669.00	30.220	248.440	3539.04	531.81	-235.84	-516.02	3219693.07	1458410.94	40.5890466	-104.7089689	0.61	
3759.00	29.800	249.280	3616.98	574.87	-252.08	-558.00	3219651.24	1458394.33	40.5890021	-104.7091201	0.66	
3848.00	30.450	249.040	3693.96	617.66	-267.97	-599.75	3219609.64	1458378.07	40.5889584	-104.7092704	0.74	
3938.00	30.190	249.020	3771.64	661.15	-284.23	-642.17	3219567.36	1458361.43	40.5889138	-104.7094231	0.29	
4027.00	30.260	248.700	3848.55	704.01	-300.39	-683.96	3219525.72	1458344.90	40.5888695	-104.7095736	0.20	
4116.00	30.370	248.950	3925.38	746.97	-316.62	-725.85	3219483.98	1458328.30	40.5888249	-104.7097244	0.19	
4206.00	30.400	246.950	4003.02	790.29	-333.70	-768.04	3219441.95	1458310.84	40.5887780	-104.7098763	1.12	
4295.00	30.550	248.590	4079.72	833.20	-350.78	-809.81	3219400.32	1458293.39	40.5887311	-104.7100267	0.95	
4385.00	30.930	248.380	4157.08	877.11	-367.65	-852.61	3219357.68	1458276.14	40.5886848	-104.7101808	0.44	
4475.00	30.750	248.360	4234.35	921.12	-384.66	-895.50	3219314.94	1458258.75	40.5886381	-104.7103352	0.20	
4565.00	30.430	248.130	4311.83	964.78	-401.63	-938.04	3219272.56	1458241.39	40.5885915	-104.7104884	0.38	
4654.00	30.200	248.650	4388.66	1007.64	-418.18	-979.80	3219230.95	1458224.48	40.5885461	-104.7106387	0.39	
4744.00	30.080	248.390	4466.49	1050.78	-434.72	-1021.86	3219189.05	1458207.55	40.5885007	-104.7107901	0.20	
4834.00	30.330	248.690	4544.27	1094.02	-451.29	-1064.00	3219147.06	1458190.61	40.5884552	-104.7109419	0.32	
4923.00	30.760	248.270	4620.92	1137.19	-467.88	-1106.07	3219105.13	1458173.65	40.5884097	-104.7110933	0.54	
5013.00	30.220	248.570	4698.47	1180.76	-484.68	-1148.54	3219062.82	1458156.47	40.5883636	-104.7112462	0.62	
5103.00	30.490	247.920	4776.14	1224.12	-501.54	-1190.78	3219020.73	1458139.24	40.5883173	-104.7113983	0.47	
5192.00	30.200	249.010	4852.94	1267.03	-518.04	-1232.60	3218979.06	1458122.36	40.5882720	-104.7115489	0.70	

REFERENCE WELLPATH IDENTIFICATION				
Operator	BAYSWATER E&P, LLC		Well	RUBY WEST 9R
Field	WELD COUNTY (NAD83/TRUE NORTH)		API/Legal	
Facility	SEC.07-T07N-R65W		Wellbore	RUBY WEST 9R AWB
Slot	SLOT#20 RUBY WEST 9R (2602'FSL & 2427'FWL,SEC.07)			

WELLPATH DATA (205 stations)												
MD [ft]	Inclination [°]	Azimuth [°]	TVD [ft]	Vert Sect [ft]	North [ft]	East [ft]	Grid East [US ft]	Grid North [US ft]	Latitude	Longitude	DLS [°/100ft]	Comments
5281.00	30.230	248.490	4929.85	1309.85	-534.28	-1274.34	3218937.47	1458105.75	40.5882274	-104.7116992	0.30	
5370.00	30.350	248.180	5006.70	1352.66	-550.85	-1316.06	3218895.90	1458088.81	40.5881819	-104.7118494	0.22	
5459.00	30.560	248.180	5083.42	1395.65	-567.61	-1357.94	3218854.17	1458071.67	40.5881359	-104.7120002	0.24	
5548.00	30.190	248.240	5160.21	1438.54	-584.32	-1399.73	3218812.54	1458054.59	40.5880900	-104.7121506	0.42	
5637.00	30.530	248.150	5237.00	1481.41	-601.03	-1441.49	3218770.92	1458037.51	40.5880442	-104.7123010	0.39	
5726.00	29.780	248.470	5313.96	1524.05	-617.55	-1483.03	3218729.53	1458020.61	40.5879988	-104.7124505	0.86	
5815.00	30.100	248.170	5391.08	1566.41	-633.96	-1524.31	3218688.41	1458003.83	40.5879538	-104.7125992	0.40	
5905.00	30.260	248.230	5468.88	1609.53	-650.77	-1566.32	3218646.55	1457986.66	40.5879076	-104.7127504	0.18	
5994.00	30.320	248.060	5545.73	1652.30	-667.48	-1607.98	3218605.04	1457969.58	40.5878618	-104.7129004	0.12	
6083.00	29.960	249.290	5622.70	1695.00	-683.73	-1649.61	3218563.56	1457952.95	40.5878171	-104.7130503	0.80	
6172.00	30.170	249.830	5699.72	1737.80	-699.30	-1691.39	3218521.92	1457937.01	40.5877744	-104.7132007	0.38	
6261.00	29.580	252.110	5776.90	1780.64	-713.76	-1733.29	3218480.16	1457922.18	40.5877347	-104.7133515	1.44	
6351.00	30.200	255.290	5854.93	1824.48	-726.33	-1776.33	3218437.23	1457909.22	40.5877002	-104.7135065	1.89	
6440.00	30.140	258.150	5931.88	1868.63	-736.61	-1819.85	3218393.81	1457898.56	40.5876720	-104.7136632	1.62	
6530.00	29.790	261.190	6009.85	1913.31	-744.67	-1864.06	3218349.67	1457890.10	40.5876498	-104.7138223	1.73	
6619.00	30.560	262.520	6086.79	1957.93	-751.00	-1908.34	3218305.45	1457883.37	40.5876324	-104.7139818	1.15	
6708.00	30.520	261.480	6163.45	2003.06	-757.30	-1953.12	3218260.73	1457876.68	40.5876152	-104.7141430	0.60	
6798.00	30.510	259.900	6240.98	2048.57	-764.69	-1998.21	3218215.70	1457868.88	40.5875949	-104.7143054	0.89	
6888.00	30.520	260.440	6318.52	2094.04	-772.49	-2043.24	3218170.75	1457860.68	40.5875734	-104.7144675	0.30	
6977.00	30.100	258.990	6395.35	2138.70	-780.51	-2087.43	3218126.63	1457852.27	40.5875514	-104.7146266	0.95	
7067.00	30.370	258.070	6473.11	2183.65	-789.52	-2131.85	3218082.30	1457842.86	40.5875267	-104.7147865	0.60	
7156.00	30.250	261.460	6549.95	2228.30	-797.50	-2176.03	3218038.19	1457834.48	40.5875048	-104.7149456	1.93	
7245.00	30.240	261.080	6626.84	2272.99	-804.30	-2220.34	3217993.95	1457827.28	40.5874861	-104.7151051	0.22	
7334.00	30.280	260.960	6703.71	2317.68	-811.30	-2264.64	3217949.71	1457819.89	40.5874668	-104.7152646	0.08	
7424.00	30.000	260.380	6781.54	2362.69	-818.63	-2309.23	3217905.19	1457812.16	40.5874467	-104.7154251	0.45	
7513.00	30.360	261.660	6858.48	2407.27	-825.61	-2353.42	3217861.06	1457804.79	40.5874276	-104.7155842	0.83	
7603.00	31.380	260.370	6935.73	2453.28	-832.83	-2399.03	3217815.52	1457797.16	40.5874077	-104.7157484	1.35	
7692.00	39.920	263.180	7007.99	2504.97	-840.11	-2450.33	3217764.29	1457789.42	40.5873877	-104.7159331	9.77	
7781.00	50.070	264.730	7070.84	2567.78	-846.65	-2512.83	3217701.86	1457782.32	40.5873697	-104.7161581	11.47	
7870.00	58.100	265.300	7123.01	2639.80	-852.89	-2584.58	3217630.17	1457775.44	40.5873526	-104.7164165	9.04	

REFERENCE WELLPATH IDENTIFICATION				
Operator	BAYSWATER E&P, LLC		Well	RUBY WEST 9R
Field	WELD COUNTY (NAD83/TRUE NORTH)		API/Legal	
Facility	SEC.07-T07N-R65W		Wellbore	RUBY WEST 9R AWB
Slot	SLOT#20 RUBY WEST 9R (2602'FSL & 2427'FWL,SEC.07)			

WELLPATH DATA (205 stations) † = interpolated, ‡ = extrapolated station												
MD [ft]	Inclination [°]	Azimuth [°]	TVD [ft]	Vert Sect [ft]	North [ft]	East [ft]	Grid East [US ft]	Grid North [US ft]	Latitude	Longitude	DLS [°/100ft]	Comments
7959.00	66.700	266.250	7164.20	2718.59	-858.67	-2663.16	3217551.64	1457768.96	40.5873367	-104.7166994	9.71	
8048.00	75.470	267.340	7193.03	2802.69	-863.35	-2747.14	3217467.71	1457763.53	40.5873238	-104.7170018	9.92	
8137.00	84.170	269.660	7208.74	2890.10	-865.62	-2834.62	3217380.25	1457760.48	40.5873176	-104.7173167	10.11	
8190.00†	87.132	270.044	7212.76	2942.82	-865.76	-2887.46	3217327.42	1457759.87	40.5873172	-104.7175070	5.64	CROSS SETBACK HEEL (1688'FSL & 460'FEL,SEC.12)
8227.00	89.200	270.310	7213.95	2979.69	-865.64	-2924.44	3217290.44	1457759.65	40.5873175	-104.7176401	5.64	
8316.00	88.980	268.190	7215.36	3068.51	-866.81	-3013.42	3217201.48	1457757.69	40.5873143	-104.7179604	2.39	
8405.00	90.030	267.320	7216.13	3157.46	-870.29	-3102.34	3217112.59	1457753.41	40.5873047	-104.7182806	1.53	
8467.00	90.674	271.832	7215.75	3219.31	-870.75	-3164.33	3217050.62	1457752.40	40.5873034	-104.7185038	7.35	Interpolate Re-Entry MD; RE-ENTRY POINT
8532.00	90.090	271.810	7215.31	3283.95	-868.69	-3229.29	3216985.64	1457753.88	40.5873090	-104.7187377	0.90	
8621.00	90.180	271.950	7215.10	3372.45	-865.77	-3318.24	3216896.67	1457756.01	40.5873170	-104.7190579	0.19	
8710.00	90.060	269.870	7214.92	3461.10	-864.35	-3407.23	3216807.68	1457756.63	40.5873209	-104.7193783	2.34	
8800.00	90.090	269.870	7214.80	3550.87	-864.56	-3497.23	3216717.69	1457755.62	40.5873203	-104.7197023	0.03	
8890.00	90.120	269.700	7214.64	3640.66	-864.90	-3587.23	3216627.70	1457754.47	40.5873193	-104.7200264	0.19	
8980.00	90.060	269.720	7214.49	3730.45	-865.35	-3677.22	3216537.71	1457753.21	40.5873180	-104.7203504	0.07	
9069.00	90.060	269.640	7214.40	3819.25	-865.85	-3766.22	3216448.72	1457751.92	40.5873166	-104.7206708	0.09	
9159.00	90.120	269.470	7214.26	3909.06	-866.55	-3856.22	3216358.73	1457750.42	40.5873147	-104.7209949	0.20	
9248.00	90.060	269.830	7214.12	3997.86	-867.09	-3945.22	3216269.75	1457749.08	40.5873131	-104.7213153	0.41	
9337.00	90.150	269.620	7213.96	4086.66	-867.52	-4034.22	3216180.76	1457747.86	40.5873119	-104.7216357	0.26	
9426.00	90.060	269.530	7213.79	4175.47	-868.18	-4123.21	3216091.77	1457746.40	40.5873101	-104.7219561	0.14	
9514.00	90.000	269.480	7213.75	4263.28	-868.94	-4211.21	3216003.79	1457744.85	40.5873079	-104.7222730	0.09	
9603.00	90.120	269.520	7213.65	4352.10	-869.71	-4300.21	3215914.81	1457743.28	40.5873058	-104.7225934	0.14	
9692.00	90.180	269.310	7213.42	4440.93	-870.62	-4389.20	3215825.82	1457741.58	40.5873032	-104.7229138	0.25	
9782.00	90.000	269.390	7213.28	4530.76	-871.64	-4479.20	3215735.85	1457739.75	40.5873004	-104.7232378	0.22	
9871.00	90.030	269.470	7213.26	4619.58	-872.53	-4568.19	3215646.86	1457738.07	40.5872979	-104.7235582	0.10	
9961.00	90.220	269.510	7213.06	4709.40	-873.33	-4658.19	3215556.88	1457736.46	40.5872957	-104.7238822	0.22	
10050.00	89.850	269.040	7213.01	4798.23	-874.46	-4747.18	3215467.90	1457734.54	40.5872925	-104.7242026	0.67	
10139.00	90.060	269.220	7213.08	4887.09	-875.81	-4836.17	3215378.93	1457732.39	40.5872888	-104.7245230	0.31	
10229.00	89.940	269.190	7213.08	4976.93	-877.06	-4926.16	3215288.96	1457730.34	40.5872853	-104.7248470	0.14	
10318.00	90.090	269.470	7213.05	5065.76	-878.10	-5015.16	3215199.98	1457728.51	40.5872824	-104.7251675	0.36	
10408.00	90.090	269.400	7212.91	5155.58	-878.99	-5105.15	3215110.00	1457726.81	40.5872799	-104.7254915	0.08	

REFERENCE WELLPATH IDENTIFICATION			
Operator	BAYSWATER E&P, LLC	Well	RUBY WEST 9R
Field	WELD COUNTY (NAD83/TRUE NORTH)	API/Legal	
Facility	SEC.07-T07N-R65W	Wellbore	RUBY WEST 9R AWB
Slot	SLOT#20 RUBY WEST 9R (2602'FSL & 2427'FWL,SEC.07)		

WELLPATH DATA (205 stations)												
MD [ft]	Inclination [°]	Azimuth [°]	TVD [ft]	Vert Sect [ft]	North [ft]	East [ft]	Grid East [US ft]	Grid North [US ft]	Latitude	Longitude	DLS [°/100ft]	Comments
10497.00	90.090	269.310	7212.77	5244.42	-879.99	-5194.14	3215021.02	1457725.02	40.5872771	-104.7258119	0.10	
10587.00	90.150	269.460	7212.58	5334.24	-880.95	-5284.14	3214931.04	1457723.24	40.5872744	-104.7261359	0.18	
10675.00	89.820	269.230	7212.61	5422.08	-881.96	-5372.13	3214843.06	1457721.45	40.5872716	-104.7264527	0.46	
10765.00	89.750	269.490	7212.94	5511.90	-882.96	-5462.13	3214753.08	1457719.64	40.5872688	-104.7267767	0.30	
10855.00	89.850	269.350	7213.26	5601.73	-883.88	-5552.12	3214663.10	1457717.93	40.5872662	-104.7271007	0.19	
10944.00	89.750	269.220	7213.57	5690.56	-884.99	-5641.11	3214574.13	1457716.02	40.5872631	-104.7274211	0.18	
11034.00	89.720	269.210	7213.98	5780.41	-886.22	-5731.10	3214484.15	1457713.98	40.5872597	-104.7277451	0.04	
11123.00	89.880	269.350	7214.30	5869.24	-887.34	-5820.10	3214395.18	1457712.07	40.5872565	-104.7280655	0.24	
11213.00	89.630	269.080	7214.68	5959.08	-888.57	-5910.09	3214305.20	1457710.03	40.5872531	-104.7283895	0.41	
11302.00	89.750	269.140	7215.16	6047.94	-889.95	-5999.08	3214216.23	1457707.85	40.5872492	-104.7287099	0.15	
11392.00	89.720	269.230	7215.58	6137.78	-891.23	-6089.07	3214126.26	1457705.77	40.5872457	-104.7290339	0.11	
11481.00	89.820	269.350	7215.94	6226.62	-892.34	-6178.06	3214037.28	1457703.87	40.5872426	-104.7293543	0.18	
11569.00	89.690	269.140	7216.31	6314.46	-893.50	-6266.05	3213949.31	1457701.92	40.5872393	-104.7296711	0.28	
11659.00	90.220	270.600	7216.38	6404.23	-893.70	-6356.05	3213859.32	1457700.92	40.5872387	-104.7299952	1.73	
11748.00	89.970	273.200	7216.23	6492.73	-890.75	-6444.99	3213770.36	1457703.07	40.5872467	-104.7303154	2.93	
11838.00	89.780	274.540	7216.43	6581.84	-884.68	-6534.78	3213680.51	1457708.34	40.5872634	-104.7306387	1.50	
11927.00	90.000	275.050	7216.60	6669.75	-877.24	-6623.47	3213591.77	1457714.99	40.5872837	-104.7309580	0.62	
12016.00	89.750	271.490	7216.80	6757.99	-872.16	-6712.31	3213502.89	1457719.27	40.5872976	-104.7312779	4.01	
12104.00	89.850	269.230	7217.10	6845.70	-871.61	-6800.30	3213414.90	1457719.03	40.5872990	-104.7315947	2.57	
12194.00	89.850	269.150	7217.34	6935.55	-872.88	-6890.29	3213324.92	1457716.96	40.5872955	-104.7319187	0.09	
12283.00	90.920	269.160	7216.74	7024.40	-874.19	-6979.28	3213235.95	1457714.85	40.5872918	-104.7322391	1.20	
12372.00	90.800	269.370	7215.41	7113.23	-875.33	-7068.26	3213146.99	1457712.91	40.5872886	-104.7325594	0.27	
12460.00	91.080	269.490	7213.96	7201.04	-876.21	-7156.25	3213059.02	1457711.25	40.5872861	-104.7328762	0.35	
12550.00	90.740	269.950	7212.53	7290.82	-876.65	-7246.23	3212969.04	1457710.01	40.5872848	-104.7332002	0.64	
12639.00	90.280	269.510	7211.74	7379.61	-877.07	-7335.23	3212880.05	1457708.79	40.5872836	-104.7335206	0.72	
12728.00	89.970	269.420	7211.55	7468.43	-877.90	-7424.22	3212791.07	1457707.16	40.5872813	-104.7338410	0.36	
12818.00	89.750	269.240	7211.77	7558.26	-878.95	-7514.22	3212701.09	1457705.31	40.5872783	-104.7341650	0.32	
12908.00	91.290	269.600	7210.95	7648.08	-879.86	-7604.21	3212611.12	1457703.59	40.5872757	-104.7344890	1.76	
12998.00	89.850	269.290	7210.05	7737.89	-880.73	-7694.20	3212521.14	1457701.92	40.5872733	-104.7348130	1.64	
13087.00	89.720	269.260	7210.39	7826.73	-881.86	-7783.19	3212432.17	1457699.99	40.5872701	-104.7351334	0.15	

REFERENCE WELLPATH IDENTIFICATION			
Operator	BAYSWATER E&P, LLC	Well	RUBY WEST 9R
Field	WELD COUNTY (NAD83/TRUE NORTH)	API/Legal	
Facility	SEC.07-T07N-R65W	Wellbore	RUBY WEST 9R AWB
Slot	SLOT#20 RUBY WEST 9R (2602'FSL & 2427'FWL,SEC.07)		

WELLPATH DATA (205 stations)												
MD [ft]	Inclination [°]	Azimuth [°]	TVD [ft]	Vert Sect [ft]	North [ft]	East [ft]	Grid East [US ft]	Grid North [US ft]	Latitude	Longitude	DLS [°/100ft]	Comments
13176.00	89.660	269.230	7210.87	7915.57	-883.03	-7872.18	3212343.19	1457698.03	40.5872668	-104.7354538	0.08	
13265.00	89.780	269.340	7211.30	8004.41	-884.14	-7961.17	3212254.22	1457696.12	40.5872637	-104.7357742	0.18	
13355.00	89.720	269.280	7211.70	8094.24	-885.23	-8051.16	3212164.24	1457694.23	40.5872606	-104.7360982	0.09	
13445.00	89.850	269.260	7212.03	8184.08	-886.37	-8141.16	3212074.27	1457692.28	40.5872574	-104.7364222	0.15	
13534.00	89.780	269.270	7212.32	8272.92	-887.52	-8230.15	3211985.29	1457690.34	40.5872542	-104.7367426	0.08	
13623.00	89.690	269.210	7212.73	8361.76	-888.70	-8319.14	3211896.31	1457688.37	40.5872508	-104.7370630	0.12	
13712.00	89.690	269.300	7213.22	8450.60	-889.85	-8408.13	3211807.34	1457686.41	40.5872476	-104.7373834	0.10	
13801.00	89.720	269.230	7213.67	8539.43	-890.99	-8497.12	3211718.36	1457684.48	40.5872444	-104.7377038	0.09	
13891.00	89.970	269.230	7213.92	8629.28	-892.20	-8587.11	3211628.39	1457682.46	40.5872410	-104.7380278	0.28	
13980.00	89.780	269.440	7214.11	8718.11	-893.24	-8676.11	3211539.41	1457680.63	40.5872380	-104.7383482	0.32	
14070.00	89.880	269.340	7214.38	8807.93	-894.20	-8766.10	3211449.43	1457678.87	40.5872353	-104.7386723	0.16	
14159.00	89.910	269.220	7214.54	8896.77	-895.31	-8855.09	3211360.46	1457676.96	40.5872322	-104.7389927	0.14	
14249.00	89.780	269.240	7214.78	8986.61	-896.52	-8945.09	3211270.48	1457674.94	40.5872288	-104.7393167	0.15	
14338.00	89.910	269.280	7215.03	9075.45	-897.67	-9034.08	3211181.50	1457673.00	40.5872255	-104.7396371	0.15	
14427.00	89.510	268.910	7215.48	9164.31	-899.08	-9123.07	3211092.54	1457670.80	40.5872216	-104.7399575	0.61	
14517.00	89.690	269.360	7216.10	9254.15	-900.44	-9213.05	3211002.57	1457668.63	40.5872177	-104.7402814	0.54	
14606.00	89.820	269.380	7216.48	9342.98	-901.42	-9302.05	3210913.59	1457666.86	40.5872150	-104.7406018	0.15	
14696.00	89.380	269.180	7217.11	9432.82	-902.55	-9392.04	3210823.61	1457664.92	40.5872118	-104.7409258	0.54	
14785.00	90.400	269.470	7217.28	9521.65	-903.59	-9481.03	3210734.64	1457663.08	40.5872088	-104.7412463	1.19	
14874.00	89.720	268.980	7217.19	9610.49	-904.80	-9570.02	3210645.66	1457661.08	40.5872054	-104.7415667	0.94	
14963.00	89.780	269.460	7217.58	9699.34	-906.01	-9659.01	3210556.69	1457659.07	40.5872020	-104.7418870	0.54	
15053.00	89.780	269.260	7217.92	9789.16	-907.02	-9749.00	3210466.71	1457657.26	40.5871991	-104.7422111	0.22	
15142.00	89.910	269.470	7218.17	9877.99	-908.00	-9838.00	3210377.73	1457655.48	40.5871963	-104.7425315	0.28	
15231.00	89.970	270.280	7218.26	9966.77	-908.20	-9927.00	3210288.74	1457654.49	40.5871957	-104.7428519	0.91	
15321.00	89.570	270.080	7218.62	10056.51	-907.91	-10017.00	3210198.74	1457653.97	40.5871964	-104.7431759	0.50	
15410.00	89.940	270.140	7219.00	10145.26	-907.74	-10106.00	3210109.75	1457653.34	40.5871967	-104.7434964	0.42	
15499.00	89.780	270.330	7219.22	10234.00	-907.38	-10194.99	3210020.75	1457652.91	40.5871976	-104.7438168	0.28	
15589.00	89.540	270.150	7219.75	10323.73	-907.00	-10284.99	3209930.76	1457652.49	40.5871986	-104.7441408	0.33	
15679.00	89.880	270.240	7220.21	10413.47	-906.69	-10374.99	3209840.76	1457651.99	40.5871993	-104.7444648	0.39	
15768.00	89.850	270.160	7220.42	10502.21	-906.38	-10463.99	3209751.77	1457651.50	40.5872000	-104.7447853	0.10	

REFERENCE WELLPATH IDENTIFICATION			
Operator	BAYSWATER E&P, LLC	Well	RUBY WEST 9R
Field	WELD COUNTY (NAD83/TRUE NORTH)	API/Legal	
Facility	SEC.07-T07N-R65W	Wellbore	RUBY WEST 9R AWB
Slot	SLOT#20 RUBY WEST 9R (2602'FSL & 2427'FWL,SEC.07)		

WELLPATH DATA (205 stations) † = interpolated, ‡ = extrapolated station												
MD [ft]	Inclination [°]	Azimuth [°]	TVD [ft]	Vert Sect [ft]	North [ft]	East [ft]	Grid East [US ft]	Grid North [US ft]	Latitude	Longitude	DLS [°/100ft]	Comments
15857.00	89.820	270.330	7220.67	10590.94	-906.00	-10552.99	3209662.77	1457651.09	40.5872010	-104.7451057	0.19	
15945.00	90.740	270.390	7220.24	10678.66	-905.45	-10640.98	3209574.78	1457650.85	40.5872024	-104.7454225	1.05	
16035.00	89.450	270.190	7220.09	10768.39	-904.99	-10730.98	3209484.78	1457650.50	40.5872035	-104.7457465	1.45	
16125.00	89.540	270.230	7220.89	10858.12	-904.66	-10820.98	3209394.79	1457650.03	40.5872043	-104.7460706	0.11	
16214.00	89.570	270.210	7221.58	10946.86	-904.32	-10909.97	3209305.80	1457649.58	40.5872052	-104.7463910	0.04	
16303.00	89.540	270.150	7222.27	11035.60	-904.04	-10998.97	3209216.80	1457649.06	40.5872058	-104.7467114	0.08	
16393.00	89.480	270.090	7223.04	11125.34	-903.85	-11088.97	3209126.81	1457648.44	40.5872062	-104.7470354	0.09	
16482.00	89.570	270.550	7223.78	11214.07	-903.36	-11177.96	3209037.82	1457648.14	40.5872075	-104.7473558	0.53	
16571.00	89.660	270.200	7224.38	11302.78	-902.78	-11266.96	3208948.82	1457647.93	40.5872090	-104.7476763	0.41	
16660.00	89.820	270.170	7224.78	11391.52	-902.49	-11355.96	3208859.83	1457647.42	40.5872097	-104.7479967	0.18	
16749.00	90.250	270.190	7224.72	11480.27	-902.21	-11444.96	3208770.83	1457646.91	40.5872103	-104.7483171	0.48	
16839.00	89.780	270.140	7224.70	11570.01	-901.95	-11534.96	3208680.83	1457646.36	40.5872109	-104.7486412	0.53	
16929.00	90.090	270.220	7224.80	11659.75	-901.67	-11624.95	3208590.84	1457645.84	40.5872116	-104.7489652	0.36	
17019.00	90.030	269.170	7224.71	11749.54	-902.15	-11714.95	3208500.85	1457644.56	40.5872101	-104.7492892	1.17	
17108.00	90.000	269.200	7224.69	11838.39	-903.41	-11803.94	3208411.88	1457642.49	40.5872065	-104.7496096	0.05	
17198.00	90.000	269.190	7224.69	11928.23	-904.68	-11893.93	3208321.90	1457640.42	40.5872030	-104.7499336	0.01	
17288.00	90.000	269.340	7224.69	12018.07	-905.83	-11983.93	3208231.93	1457638.47	40.5871997	-104.7502576	0.17	
17377.00	89.970	269.190	7224.71	12106.91	-906.97	-12072.92	3208142.95	1457636.53	40.5871964	-104.7505780	0.17	
17467.00	89.940	269.140	7224.78	12196.76	-908.28	-12162.91	3208052.98	1457634.41	40.5871927	-104.7509020	0.06	
17556.00	90.310	269.250	7224.59	12285.61	-909.53	-12251.90	3207964.01	1457632.37	40.5871891	-104.7512224	0.43	
17646.00	90.430	269.070	7224.00	12375.45	-910.85	-12341.89	3207874.04	1457630.24	40.5871854	-104.7515464	0.24	
17736.00	89.850	269.150	7223.78	12465.30	-912.25	-12431.88	3207784.07	1457628.04	40.5871814	-104.7518704	0.65	
17826.00	89.910	269.130	7223.97	12555.15	-913.60	-12521.87	3207694.09	1457625.88	40.5871776	-104.7521944	0.07	
17915.00	89.910	269.120	7224.11	12644.00	-914.96	-12610.86	3207605.12	1457623.73	40.5871737	-104.7525148	0.01	LAST BH MWD SURVEY
17940.00‡	89.910	269.120	7224.15	12668.96	-915.35	-12635.85	3207580.13	1457623.12	40.5871727	-104.7526048	0.00	PROJECTION TO BIT (1699'FSL & 480'FWL,SEC.11)

REFERENCE WELLPATH IDENTIFICATION			
Operator	BAYSWATER E&P, LLC	Well	RUBY WEST 9R
Field	WELD COUNTY (NAD83/TRUE NORTH)	API/Legal	
Facility	SEC.07-T07N-R65W	Wellbore	RUBY WEST 9R AWB
Slot	SLOT#20 RUBY WEST 9R (2602'FSL & 2427'FWL,SEC.07)		

TARGETS								
Name	TVD [ft]	North [ft]	East [ft]	Grid East [US ft]	Grid North [US ft]	Latitude	Longitude	Shape
RUBY WEST 9R LP REV-1(1691'FSL & 470'FEL,SEC.12)	7216.00	-862.55	-2897.19	3217317.66	1457762.99	40.5873260	-104.7175420	point
RUBY WEST 9R BHL REV-1(1691'FSL & 470'FWL,SEC.11)	7226.00	-922.86	-12646.47	3207569.58	1457615.51	40.5871520	-104.7526430	point

WELLPATH COMPOSITION - Ref Wellbore: RUBY WEST 9R AWB Ref Wellpath: RUBY WEST 9R AWP					
Start MD [ft]	End MD [ft]	Positional Uncertainty Model	Log Name/Comment	Wellbore	Survey Date
23.00	1514.00	OWSG MWD rev2 + IFR1	OWSG MWD rev2 + IFR1 13-1/2" <135 - 1514>	RUBY WEST 9R AWB	11/10/2022
1514.00	17940.00	OWSG MWD rev2 + IFR1 + Multi-Station Correction	OWSG MWD rev2 + IFR1 + MS 8-1/2" <1613 - 17915>	RUBY WEST 9R AWB	11/10/2022

REFERENCE WELLPATH IDENTIFICATION			
Operator	BAYSWATER E&P, LLC	Well	RUBY WEST 9R
Field	WELD COUNTY (NAD83/TRUE NORTH)	API/Legal	
Facility	SEC.07-T07N-R65W	Wellbore	RUBY WEST 9R AWB
Slot	SLOT#20 RUBY WEST 9R (2602'FSL & 2427'FWL,SEC.07)		

WELLPATH COMMENTS				
MD [ft]	Inclination [°]	Azimuth [°]	TVD [ft]	Comment
135.00	0.830	7.410	135.00	FIRST BH SURFACE MWD SURVEY
1514.00	2.520	71.110	1513.06	LAST BH SURFACE MWD SURVEY
1613.00	1.940	70.440	1611.98	FIRST BH MWD SURVEY
8190.00	87.132	270.044	7212.76	CROSS SETBACK HEEL (1688'FSL & 460'FEL,SEC.12)
8467.00	90.674	271.832	7215.75	RE-ENTRY POINT
17915.00	89.910	269.120	7224.11	LAST BH MWD SURVEY
17940.00	89.910	269.120	7224.15	PROJECTION TO BIT (1699'FSL & 480'FWL,SEC.11)

SURVEY LOG COMMENTS				
MD [ft]	Inclination [°]	Azimuth [°]	TVD [ft]	Comment
8467.00	90.674	271.832	7215.75	Interpolate Re-Entry MD