



Bayswater Exploration & Production LLC

SURFACE POST JOB REPORT

Ruby West #7 05-123-51752
S:7 T:7N R:65W Weld CO

CallSheet #: 82854
Proposal #: 62260



SURFACE Post Job Report

Attention: Trevor Smith | (720) 335-9045 | trevor.smith@iptenergyservices.com
Bayswater Exploration & Production LLC
730 17TH STREET | DENVER, CO 80202

Dear Trevor Smith,

Thank you for the opportunity to provide cementing services on this well. American Cementing strives to achieve complete customer satisfaction. If you have any questions regarding the services or data provided, please contact American Cementing at any time.

Sincerely,

Jason Creel

Field Engineer Lead | (307) 256-0306 | jason.creel@americacementing.com

Field Office 1716 E Allison Rd, Cheyenne, WY 82007
Phone: (307) 414-0049

Job Details & Summary

Geometry

Type	Function	OD (in)	ID (in)	Weight (lb/ft)	Top (ft)	Bottom (ft)	Excess (%)
Open Hole	Outer		13.5		0	1555	25
Casing	Inner	9.625	8.921	36	0	1555	0

Equipment / People

Unit Type	Unit
AS Cement Trailer Float	CTF-018
Field Storage Silo	FSS(CTS)-448
Cement Pump Float	CPF-184
Light Duty Vehicles	LDV-049
Cement Utility Float	CUF(FIF)-163

Timing

Event	Date/Time
Call Out	8/10/2022 18:00
Depart Facility	8/10/2022 20:00
On Location	8/10/2022 21:30
Rig Up Iron	8/10/2022 22:00
Job Started	8/11/2022 03:04
Job Completed	8/11/2022 04:22
Rig Down Iron	8/11/2022 05:00
Depart Location	8/11/2022 07:00

General Job Information

Metrics	Value
Well Fluid Density	8.7 lb/gal
Well Fluid Type	Water
Rig Circulation Vol	300 bbls
Rig Circulation Time	0.5 hours
Calculated Displacement	119.5 bbls
Actual Displacement	119 bbls
Total Spacer to Surface	20 bbls
Total CMT to Surface	19 bbls
Well Topped Out	No

Casing Equipment

Type	Description	Qty
CENTRALIZER,9-5/8"NON-WELD	Bow Spring	18

Job Details

Metrics	Value
Flare Prior to Job	No
Flare Prior to Job	0 units
Flare During Job	No
Flare During Job	0 units
Flare at End of Job	No
Flare at End of Job	0 units
Well Full Prior to Job	Yes
Well Fluid Density Into Well	8.7 lb/gal
Well Fluid Density Out of Well	8.7 lb/gal

Job Details (cont.)

Metrics	Value
BHCT	86 °F
BHST	110 °F

Water Analysis

Metrics	Value	Recommended
Water Source	Upright Rig Tank	
Temperature	60 °F	50-80 °F
pH Level	7	5.5-8.5
Chlorides	0 mg/L	0-3000 mg/L
Total Alkalinity	140	0-1000
Total Hardness	250 mg/L	0-500 mg/L
Carbonates	40 mg/L	0-100 mg/L
Sulfates	<200 mg/L	0-1500 mg/L
Potassium	0 mg/L	0-3000 mg/L
Iron	0 mg/L	0-300 mg/L

Circulation

Lost Circulation Experienced
No

Job Execution Information

Fluid	Product	Function	Density (lb/gal)	Yield (ft ³ /sk)	Water Rq. (gal/sk)	Water Rq. (gal/bbl)	Volume (sks)	Volume (bbl)	Designed Top (ft)
1	Fresh Water	Flush	8.34			42.00		20.00	0
2	ACem S100.3.1C	Lead	12.00	2.53	14.86		255.00	114.86	0
3	ACem S100.3.1C	Tail	12.50	2.23	12.58		145.00	57.46	1055
4	D822	DisplacementFinal	8.34			42.00		119.00	0

Job Fluid Details

Fluid	Type	Fluid	Product	Function	Conc.	Uom
2	Lead	ACem S100.3.1C	ASTM TYPE III	Cement	100.00	%
2	Lead	ACem S100.3.1C	A-10	Accelerator	5.00	%BWOB
2	Lead	ACem S100.3.1C	A-2	Accelerator	2.00	lb/sk
2	Lead	ACem S100.3.1C	A-7P	Accelerator	2.00	lb/sk
2	Lead	ACem S100.3.1C	FP-24	Defoamer	0.30	%BWOB
2	Lead	ACem S100.3.1C	IntegraSeal POLI	LostCirculation	0.13	lb/sk
3	Tail	ACem S100.3.1C	ASTM TYPE III	Cement	100.00	%
3	Tail	ACem S100.3.1C	A-10	Accelerator	5.00	%BWOB
3	Tail	ACem S100.3.1C	A-2	Accelerator	2.00	lb/sk
3	Tail	ACem S100.3.1C	A-7P	Accelerator	2.00	lb/sk
3	Tail	ACem S100.3.1C	FP-24	Defoamer	0.30	%BWOB
3	Tail	ACem S100.3.1C	IntegraSeal POLI	LostCirculation	0.13	lb/sk

Job Logs

Line	Event	Date (MM/DD/YY)	Time (HH:MM)	Density (lb/gal)	Pump Rate (bpm)	Pump Volume (bbls)	Pipe Pressure (psi)	Comment
1	Call Out	8/10/2022	18:00					ACC gets called out requested time on Location was 0:00
2	Depart Facility	8/10/2022	20:00					ACC departs facility
3	Arrive To Location	8/10/2022	21:30					ACC arrives to location rig is currently running casing
4	Rig Up	8/10/2022	22:00					ACC spots in units and gets rigged up
5	Safety Meeting	8/11/2022	02:45					ACC had a pre job safety meeting with rig hands and OSR, Went over job procedure
6	Pressure Test	8/11/2022	03:04				3300	Pressure test pumps and lines to 3300 psi
7	Pump FW Spacer W/Dye	8/11/2022	03:08	8.34	3	20	150	Pumped 20 bbls of of blue dye tracer at 3 bpm w/ 150 psi
8	Pump Lead Cement	8/11/2022	03:14	12	6	114.9	400	Pumped 114.9 bbls Lead Cement (255 sks 12 ppg 2.53 yld 14.9 g/sk) at 6 bpm w/ 400 psi
9	Pump Tail Cement	8/11/2022	03:37	12.5	6	57.59	300	Pumped 57.49 bbls Tail Cement (145 sks 12.5 ppg 2.23 yld 12.6 /sk) at 6 bpm w/ 300 psi
10	Shut Down	8/11/2022	03:53					Shut Down Pumping
11	Drop Plug	8/11/2022	03:55					Dropped Plug
12	Pump Disp	8/11/2022	03:58	8.34	8.5		300	Start pumping disp at 8.5 bpm w/ 300 psi
13	Dye Tracer To Surface	8/11/2022	04:10	8.34	8.5	80	500	At 80 bbls away into disp got blue dye tracer to surface at 8.5 bpm w/ 500 psi
14	Cement To Surface	8/11/2022	04:13	8.34	8.5	100	850	At 100 bbls away into disp got Cement back to surface at 8.5 bpm w/ 850 psi
15	Slow Down Rate	8/11/2022	04:14	8.34	4	104	600	At 104 bbls away into disp. Slow down rate to 4 bpm w/ 600 psi
16	Land Plug	8/11/2022	04:17	8.34	4	119	600	Landed plug at 119 bbls away into disp FCP was 600 psi , Bumped plug to 1250 psi at 4 bpm
17	Check Floats	8/11/2022	04:22					Check floats got .5 BBL back
18	Rig Down	8/11/2022	05:00					ACC starts rigging down equipment and iron
19	Depart Location	8/11/2022	07:00					ACC departs location
20	Other	8/11/2022	07:01			19		Total CMT to Surface - 19 BBLS

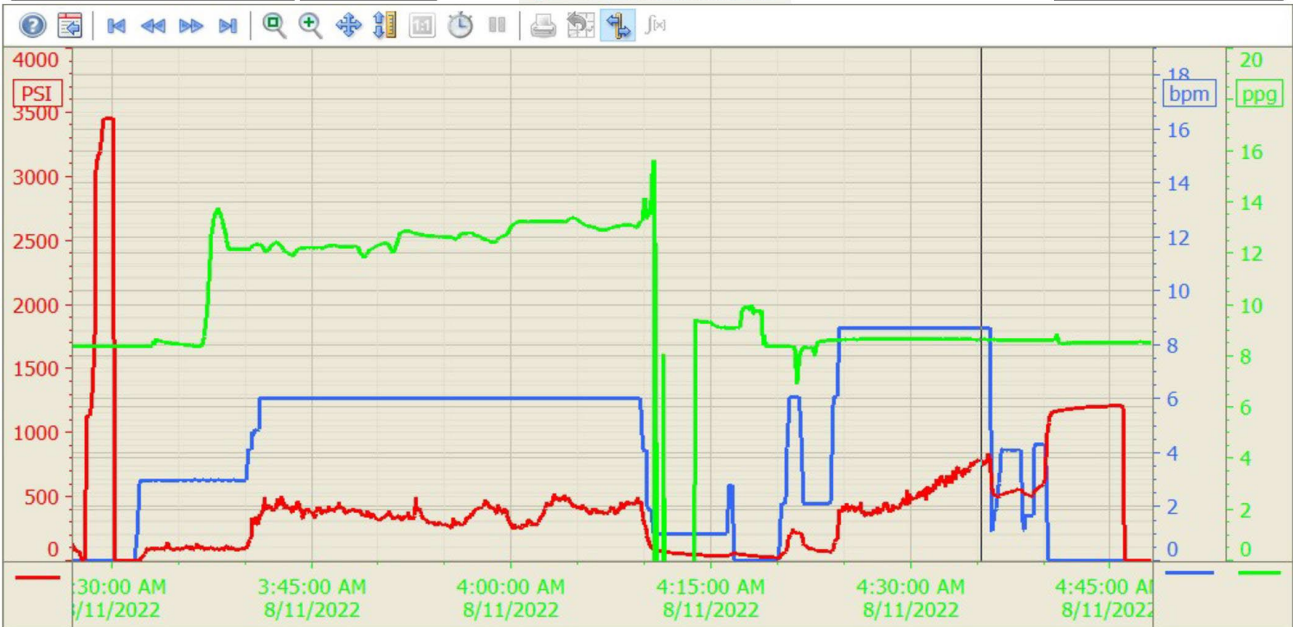
Pump Diagrams

Summary Trend

Bayswater Exp 7



Lease: Ruby West



8/11/2022 5:41:20 AM