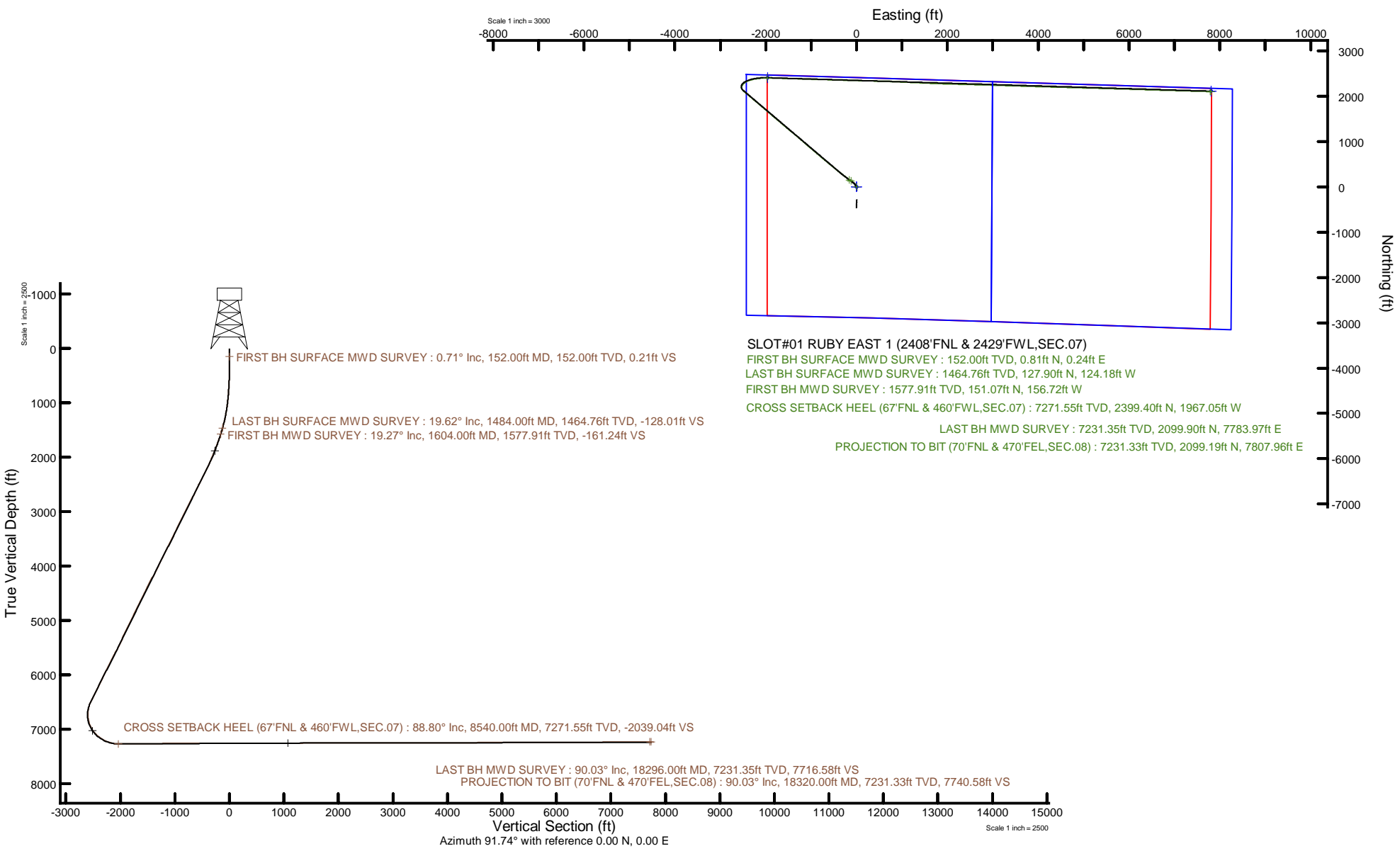


# BAYSWATER E&P, LLC



Location: COLORADO Slot: SLOT#01 RUBY EAST 1 (2408'FNL & 2429'FWL,SEC.07)  
 Field: WELD COUNTY (NAD83/TRUE NORTH) Well: RUBY EAST 1  
 Facility: SEC.07-T07N-R65W Wellbore: RUBY EAST 1 PWB

Plot reference wellpath is RUBY EAST 1 PWP Rev-C.0	Grid System: NAD83 / Lambert Colorado SP, Northern Zone (601), US feet
True vertical depths are referenced to Akita 518 (16) (KB)	North Reference: True north
Reference wellpath measured depths are referenced to Akita 518 (16) (KB)	Scale: True distance
Akita 518 (16) (KB) to Mean Sea Level: 4941 feet	Coordinates are in feet referenced to Slot
Mean Sea Level to Ground level (At Slot: SLOT#01 RUBY EAST 1 (2408'FNL & 2429'FWL,SEC.07)): -4925 feet	Depths are in feet
Offset wellpath MDs are referenced to each path's default MD datum	Created by: painsetr on 2022-11-28; Database: WellArchitectDB





# Actual Wellpath Report

RUBY EAST 1 AWP

Page 1 of 12



REFERENCE WELLPATH IDENTIFICATION			
Operator	BAYSWATER E&P, LLC	Well	RUBY EAST 1
Field	WELD COUNTY (NAD83/TRUE NORTH)	API	0512351737
Facility	SEC.07-T07N-R65W	Wellbore	RUBY EAST 1 AWB
Slot	SLOT#01 RUBY EAST 1 (2408'FNL & 2429'FWL,SEC.07)		

REPORT SETUP INFORMATION			
Projection System	NAD83 / Lambert Colorado SP, Northern Zone (501), US feet	Software System	WellArchitect® 6.0
North Reference	True	User	Painsetr
Scale	0.999974	Report Generated	11/28/2022 at 10:56:23 AM
Convergence at slot	0.51° East	Database	WellArchitectDB

WELLPATH LOCATION	Local coordinates		Grid coordinates		Geographic coordinates	
	North[ft]	East[ft]	Easting[US ft]	Northing[US ft]	Latitude	Longitude
Slot Location	0.00	0.00	3220206.89	1458936.65	40.5904770°	-104.7071020°
Facility Reference Pt			3220206.89	1458936.65	40.5904770°	-104.7071020°
Field Reference Pt			3174587.00	1430859.71	40.5144139°	-104.8720750°

WELLPATH DATUM			
Calculation method	Minimum curvature	Akita 518 (16') (KB) to Facility Vertical Datum	4941.00ft
Horizontal Reference Pt	Slot	Akita 518 (16') (KB) to Mean Sea Level	4941.00ft
Vertical Reference Pt	Akita 518 (16') (KB)	Akita 518 (16') (KB) to Ground Level at Slot (SLOT#01 RUBY EAST 1 (2408'FNL & 2429'FWL,SEC.07))	16.00ft
MD Reference Pt	Akita 518 (16') (KB)	Section Origin	N 0.00, E 0.00 ft
Field Vertical Reference	Mean Sea Level	Section Azimuth	91.74°

REFERENCE WELLPATH IDENTIFICATION			
Operator	BAYSWATER E&P, LLC	Well	RUBY EAST 1
Field	WELD COUNTY (NAD83/TRUE NORTH)	API	0512351737
Facility	SEC.07-T07N-R65W	Wellbore	RUBY EAST 1 AWB
Slot	SLOT#01 RUBY EAST 1 (2408'FNL & 2429'FWL,SEC.07)		

WELLPATH DATA (211 stations) † = interpolated, ‡ = extrapolated station												
MD [ft]	Inclination [°]	Azimuth [°]	TVD [ft]	Vert Sect [ft]	North [ft]	East [ft]	Grid East [US ft]	Grid North [US ft]	Latitude	Longitude	DLS ["/100ft]	Comments
0.00†	0.000	16.440	0.00	0.00	0.00	0.00	3220206.89	1458936.65	40.5904770	-104.7071020	0.00	
16.00	0.000	16.440	16.00	0.00	0.00	0.00	3220206.89	1458936.65	40.5904770	-104.7071020	0.00	
152.00	0.710	16.440	152.00	0.21	0.81	0.24	3220207.13	1458937.46	40.5904792	-104.7071011	0.52	FIRST BH SURFACE MWD SURVEY
241.00	0.750	43.080	240.99	0.74	1.76	0.79	3220207.67	1458938.42	40.5904818	-104.7070991	0.38	
331.00	0.950	328.730	330.98	0.72	2.83	0.81	3220207.68	1458939.49	40.5904848	-104.7070991	1.15	
421.00	1.240	331.920	420.97	-0.17	4.33	-0.04	3220206.82	1458940.98	40.5904889	-104.7071021	0.33	
510.00	2.550	323.200	509.92	-1.88	6.76	-1.68	3220205.16	1458943.40	40.5904956	-104.7071080	1.50	
600.00	3.340	321.590	599.80	-4.82	10.42	-4.51	3220202.30	1458947.03	40.5905056	-104.7071182	0.88	
690.00	5.040	323.620	689.55	-8.95	15.66	-8.48	3220198.27	1458952.23	40.5905200	-104.7071325	1.90	
779.00	6.500	324.050	778.10	-14.45	22.88	-13.76	3220192.93	1458959.41	40.5905398	-104.7071515	1.64	
869.00	8.260	326.730	867.35	-21.27	32.41	-20.29	3220186.31	1458968.88	40.5905660	-104.7071751	1.99	
959.00	10.060	326.160	956.20	-29.55	44.35	-28.22	3220178.28	1458980.75	40.5905987	-104.7072036	2.00	
1048.00	11.330	320.060	1043.65	-39.89	57.51	-38.16	3220168.22	1458993.82	40.5906349	-104.7072394	1.91	
1138.00	11.990	312.460	1131.80	-52.86	70.60	-50.73	3220155.53	1459006.79	40.5906708	-104.7072847	1.86	
1227.00	13.970	310.360	1218.52	-68.26	83.80	-65.74	3220140.41	1459019.86	40.5907070	-104.7073387	2.29	
1317.00	15.620	308.240	1305.54	-86.49	98.33	-83.54	3220122.48	1459034.23	40.5907469	-104.7074028	1.93	
1407.00	17.580	305.420	1391.78	-107.54	113.71	-104.13	3220101.75	1459049.43	40.5907891	-104.7074769	2.35	
1484.00	19.620	305.170	1464.76	-128.01	127.90	-124.18	3220081.58	1459063.43	40.5908281	-104.7075491	2.65	LAST BH SURFACE MWD SURVEY
1604.00	19.270	305.730	1577.91	-161.24	151.07	-156.72	3220048.83	1459086.31	40.5908917	-104.7076663	0.33	FIRST BH MWD SURVEY
1692.00	24.190	307.570	1659.63	-187.91	170.55	-182.82	3220022.57	1459105.56	40.5909451	-104.7077602	5.64	
1780.00	24.480	309.180	1739.82	-217.01	193.07	-211.24	3219993.94	1459127.82	40.5910069	-104.7078626	0.82	
1868.00	25.510	308.030	1819.57	-246.76	216.26	-240.30	3219964.68	1459150.75	40.5910706	-104.7079672	1.29	
1953.00	26.260	307.900	1896.05	-276.70	239.09	-269.56	3219935.22	1459173.31	40.5911332	-104.7080726	0.88	
2042.00	27.100	308.030	1975.57	-308.93	263.67	-301.06	3219903.50	1459197.61	40.5912007	-104.7081860	0.95	
2130.00	28.570	307.720	2053.39	-342.12	288.89	-333.50	3219870.84	1459222.55	40.5912700	-104.7083028	1.68	
2218.00	30.910	307.940	2129.79	-377.39	315.67	-367.97	3219836.13	1459249.01	40.5913434	-104.7084269	2.66	
2306.00	30.930	308.840	2205.28	-413.67	343.75	-403.41	3219800.44	1459276.77	40.5914205	-104.7085545	0.53	
2395.00	32.500	309.910	2280.99	-450.71	373.43	-439.57	3219764.01	1459306.13	40.5915020	-104.7086847	1.87	
2483.00	32.390	310.300	2355.26	-487.73	403.85	-475.68	3219727.64	1459336.22	40.5915855	-104.7088147	0.27	
2571.00	32.990	309.800	2429.32	-525.02	434.43	-512.06	3219690.98	1459366.47	40.5916694	-104.7089457	0.75	

REFERENCE WELLPATH IDENTIFICATION			
Operator	BAYSWATER E&P, LLC	Well	RUBY EAST 1
Field	WELD COUNTY (NAD83/TRUE NORTH)	API	0512351737
Facility	SEC.07-T07N-R65W	Wellbore	RUBY EAST 1 AWB
Slot	SLOT#01 RUBY EAST 1 (2408'FNL & 2429'FWL,SEC.07)		

WELLPATH DATA (211 stations)												
MD [ft]	Inclination [°]	Azimuth [°]	TVD [ft]	Vert Sect [ft]	North [ft]	East [ft]	Grid East [US ft]	Grid North [US ft]	Latitude	Longitude	DLS [°/100ft]	Comments
2659.00	32.370	309.660	2503.39	-562.47	464.80	-548.60	3219654.17	1459396.52	40.5917528	-104.7090773	0.71	
2747.00	31.800	309.700	2577.94	-599.34	494.64	-584.58	3219617.93	1459426.04	40.5918347	-104.7092068	0.65	
2836.00	31.960	309.790	2653.52	-636.38	524.70	-620.72	3219581.52	1459455.77	40.5919172	-104.7093370	0.19	
2923.00	32.450	309.570	2727.13	-672.94	554.30	-656.41	3219545.58	1459485.05	40.5919984	-104.7094655	0.58	
3011.00	32.790	309.050	2801.25	-710.54	584.35	-693.11	3219508.61	1459514.77	40.5920809	-104.7095976	0.50	
3099.00	32.230	309.450	2875.46	-748.06	614.28	-729.74	3219471.72	1459544.36	40.5921630	-104.7097295	0.68	
3186.00	32.370	310.640	2949.00	-784.54	644.19	-765.32	3219435.86	1459573.95	40.5922451	-104.7098577	0.75	
3273.00	32.660	311.050	3022.36	-820.83	674.77	-800.70	3219400.22	1459604.22	40.5923291	-104.7099850	0.42	
3362.00	32.490	310.620	3097.36	-858.02	706.10	-836.95	3219363.68	1459635.23	40.5924151	-104.7101156	0.32	
3450.00	32.390	310.830	3171.63	-894.71	736.90	-872.73	3219327.64	1459665.70	40.5924996	-104.7102444	0.17	
3537.00	32.270	310.560	3245.15	-930.89	767.24	-908.00	3219292.09	1459695.72	40.5925829	-104.7103714	0.22	
3624.00	32.230	310.650	3318.72	-967.04	797.45	-943.25	3219256.58	1459725.62	40.5926658	-104.7104983	0.07	
3712.00	32.330	309.940	3393.12	-1003.79	827.85	-979.09	3219220.46	1459755.69	40.5927492	-104.7106274	0.45	
3800.00	32.470	310.830	3467.42	-1040.62	858.40	-1015.01	3219184.28	1459785.92	40.5928331	-104.7107567	0.56	
3888.00	31.160	310.390	3542.20	-1076.74	888.60	-1050.22	3219148.79	1459815.80	40.5929160	-104.7108835	1.51	
3977.00	32.760	310.570	3617.71	-1113.48	919.18	-1086.06	3219112.69	1459846.06	40.5929999	-104.7110125	1.80	
4065.00	32.620	310.870	3691.77	-1150.43	950.18	-1122.08	3219076.40	1459876.74	40.5930850	-104.7111423	0.24	
4154.00	32.070	310.820	3766.96	-1187.38	981.33	-1158.10	3219040.10	1459907.56	40.5931705	-104.7112720	0.62	
4242.00	33.030	310.550	3841.14	-1224.20	1012.19	-1194.00	3219003.92	1459938.10	40.5932552	-104.7114012	1.10	
4330.00	32.300	310.990	3915.22	-1261.10	1043.20	-1229.97	3218967.68	1459968.79	40.5933403	-104.7115308	0.87	
4418.00	33.460	310.570	3989.12	-1298.21	1074.41	-1266.15	3218931.22	1459999.67	40.5934259	-104.7116610	1.34	
4507.00	33.260	310.220	4063.46	-1336.43	1106.12	-1303.42	3218893.67	1460031.05	40.5935130	-104.7117952	0.31	
4596.00	33.560	310.070	4137.75	-1374.83	1137.72	-1340.88	3218855.93	1460062.30	40.5935997	-104.7119301	0.35	
4684.00	34.250	309.810	4210.79	-1413.41	1169.23	-1378.52	3218818.01	1460093.48	40.5936862	-104.7120657	0.80	
4772.00	33.850	308.290	4283.70	-1452.59	1200.27	-1416.78	3218779.48	1460124.18	40.5937714	-104.7122034	1.07	
4860.00	33.010	310.540	4357.14	-1490.97	1231.04	-1454.24	3218741.75	1460154.61	40.5938559	-104.7123383	1.70	
4946.00	32.600	310.520	4429.43	-1527.28	1261.32	-1489.65	3218706.07	1460184.57	40.5939390	-104.7124658	0.48	
5034.00	32.380	310.480	4503.65	-1564.14	1292.02	-1525.59	3218669.85	1460214.94	40.5940232	-104.7125953	0.25	
5121.00	31.920	310.320	4577.31	-1600.29	1322.02	-1560.85	3218634.33	1460244.63	40.5941056	-104.7127222	0.54	
5210.00	31.730	310.670	4652.93	-1636.89	1352.50	-1596.54	3218598.37	1460274.79	40.5941892	-104.7128507	0.30	

REFERENCE WELLPATH IDENTIFICATION			
Operator	BAYSWATER E&P, LLC	Well	RUBY EAST 1
Field	WELD COUNTY (NAD83/TRUE NORTH)	API	0512351737
Facility	SEC.07-T07N-R65W	Wellbore	RUBY EAST 1 AWB
Slot	SLOT#01 RUBY EAST 1 (2408'FNL & 2429'FWL,SEC.07)		

WELLPATH DATA (211 stations)												
MD [ft]	Inclination [°]	Azimuth [°]	TVD [ft]	Vert Sect [ft]	North [ft]	East [ft]	Grid East [US ft]	Grid North [US ft]	Latitude	Longitude	DLS [°/100ft]	Comments
5299.00	31.920	310.220	4728.55	-1673.52	1382.95	-1632.26	3218562.38	1460304.91	40.5942728	-104.7129793	0.34	
5387.00	31.780	310.220	4803.30	-1709.87	1412.93	-1667.71	3218526.66	1460334.58	40.5943551	-104.7131070	0.16	
5473.00	31.810	310.570	4876.40	-1745.26	1442.30	-1702.22	3218491.89	1460363.63	40.5944357	-104.7132313	0.22	
5561.00	31.860	310.650	4951.16	-1781.40	1472.51	-1737.46	3218456.38	1460393.53	40.5945186	-104.7133582	0.07	
5648.00	31.820	310.670	5025.07	-1817.11	1502.41	-1772.28	3218421.30	1460423.12	40.5946007	-104.7134836	0.05	
5735.00	31.770	310.230	5099.01	-1852.88	1532.15	-1807.16	3218386.16	1460452.55	40.5946823	-104.7136092	0.27	
5823.00	31.790	310.730	5173.82	-1889.03	1562.24	-1842.41	3218350.64	1460482.31	40.5947649	-104.7137361	0.30	
5911.00	31.970	310.490	5248.55	-1925.21	1592.49	-1877.70	3218315.09	1460512.25	40.5948479	-104.7138632	0.25	
6000.00	30.740	310.600	5324.55	-1961.30	1622.59	-1912.89	3218279.63	1460542.03	40.5949305	-104.7139899	1.38	
6088.00	32.340	310.560	5399.54	-1997.15	1652.54	-1947.85	3218244.40	1460571.66	40.5950127	-104.7141158	1.82	
6175.00	32.350	310.450	5473.05	-2033.45	1682.77	-1983.24	3218208.74	1460601.58	40.5950957	-104.7142432	0.07	
6264.00	32.820	310.520	5548.04	-2070.83	1713.89	-2019.69	3218172.01	1460632.37	40.5951811	-104.7143745	0.53	
6352.00	32.860	310.610	5621.97	-2108.01	1744.92	-2055.95	3218135.48	1460663.08	40.5952662	-104.7145051	0.07	
6441.00	32.780	310.460	5696.77	-2145.61	1776.27	-2092.61	3218098.55	1460694.10	40.5953523	-104.7146371	0.13	
6528.00	32.800	310.420	5769.90	-2182.38	1806.84	-2128.47	3218062.42	1460724.34	40.5954362	-104.7147662	0.03	
6616.00	32.740	310.560	5843.90	-2219.53	1837.76	-2164.69	3218025.92	1460754.94	40.5955210	-104.7148967	0.11	
6704.00	32.310	310.480	5918.10	-2256.41	1868.50	-2200.66	3217989.68	1460785.36	40.5956054	-104.7150262	0.49	
6792.00	32.230	310.370	5992.50	-2293.09	1898.97	-2236.43	3217953.64	1460815.50	40.5956890	-104.7151550	0.11	
6881.00	32.890	310.560	6067.52	-2330.46	1930.06	-2272.87	3217916.92	1460846.26	40.5957743	-104.7152862	0.75	
6969.00	32.740	310.650	6141.47	-2367.59	1961.10	-2309.07	3217880.44	1460876.97	40.5958595	-104.7154166	0.18	
7057.00	32.310	310.410	6215.67	-2404.47	1991.84	-2345.03	3217844.21	1460907.39	40.5959439	-104.7155461	0.51	
7145.00	32.790	310.250	6289.85	-2441.48	2022.48	-2381.13	3217807.84	1460937.71	40.5960280	-104.7156761	0.55	
7234.00	32.700	310.240	6364.70	-2479.15	2053.59	-2417.87	3217770.82	1460968.48	40.5961134	-104.7158084	0.10	
7323.00	29.770	309.500	6440.80	-2515.44	2083.18	-2453.28	3217735.15	1460997.75	40.5961946	-104.7159359	3.32	
7411.00	32.590	310.740	6516.08	-2551.14	2112.55	-2488.10	3217700.07	1461026.81	40.5962752	-104.7160613	3.29	
7499.00	26.070	326.970	6592.88	-2580.66	2144.31	-2516.68	3217671.22	1461058.32	40.5963624	-104.7161642	11.63	
7587.00	21.840	349.220	6673.44	-2595.27	2176.68	-2530.31	3217657.29	1461090.56	40.5964512	-104.7162133	11.25	
7675.00	20.410	12.180	6755.67	-2596.04	2207.82	-2530.14	3217657.19	1461121.70	40.5965367	-104.7162127	9.48	
7762.00	23.910	28.940	6836.31	-2585.22	2238.11	-2518.39	3217668.66	1461152.10	40.5966198	-104.7161704	8.27	
7850.00	29.150	43.720	6915.10	-2562.70	2269.26	-2494.90	3217691.87	1461183.46	40.5967053	-104.7160859	9.54	

REFERENCE WELLPATH IDENTIFICATION				
Operator	BAYSWATER E&P, LLC		Well	RUBY EAST 1
Field	WELD COUNTY (NAD83/TRUE NORTH)		API	0512351737
Facility	SEC.07-T07N-R65W		Wellbore	RUBY EAST 1 AWB
Slot	SLOT#01 RUBY EAST 1 (2408'FNL & 2429'FWL,SEC.07)			

WELLPATH DATA (211 stations) † = interpolated, ‡ = extrapolated station												
MD [ft]	Inclination [°]	Azimuth [°]	TVD [ft]	Vert Sect [ft]	North [ft]	East [ft]	Grid East [US ft]	Grid North [US ft]	Latitude	Longitude	DLS [°/100ft]	Comments
7938.00	35.010	56.410	6989.72	-2527.70	2298.78	-2458.99	3217727.52	1461213.29	40.5967864	-104.7159565	10.12	
8026.00	42.750	64.270	7058.21	-2480.50	2325.77	-2410.95	3217775.31	1461240.71	40.5968605	-104.7157836	10.42	
8113.00	50.310	72.330	7118.07	-2422.60	2348.80	-2352.32	3217833.73	1461264.26	40.5969237	-104.7155725	10.97	
8201.00	57.010	77.300	7170.21	-2354.82	2367.22	-2283.95	3217901.93	1461283.29	40.5969743	-104.7153263	8.87	
8290.00	65.160	81.880	7213.23	-2278.73	2381.16	-2207.40	3217978.35	1461297.92	40.5970126	-104.7150506	10.20	
8378.00	72.760	83.400	7244.80	-2197.69	2391.65	-2126.01	3218059.65	1461309.13	40.5970414	-104.7147575	8.79	
8466.00	80.850	87.730	7264.88	-2112.59	2398.21	-2040.68	3218144.91	1461316.46	40.5970594	-104.7144503	10.36	
8540.00†	88.804	90.408	7271.55	-2039.04	2399.40	-1967.05	3218218.52	1461318.30	40.5970627	-104.7141852	11.34	CROSS SETBACK HEEL (67'FNL & 460'FWL,SEC.07)
8554.00	90.310	90.910	7271.65	-2025.05	2399.23	-1953.05	3218232.52	1461318.26	40.5970622	-104.7141348	11.34	
8642.00	90.310	90.680	7271.18	-1937.06	2398.01	-1865.06	3218320.51	1461317.83	40.5970589	-104.7138179	0.26	
8730.00	90.280	91.550	7270.72	-1849.07	2396.30	-1777.08	3218408.51	1461316.90	40.5970542	-104.7135011	0.99	
8817.00	90.430	91.520	7270.19	-1762.07	2393.97	-1690.12	3218495.49	1461315.35	40.5970478	-104.7131879	0.18	
8905.00	90.340	91.540	7269.59	-1674.07	2391.62	-1602.15	3218583.47	1461313.79	40.5970414	-104.7128712	0.10	
8994.00	90.490	91.590	7268.95	-1585.07	2389.19	-1513.18	3218672.45	1461312.15	40.5970347	-104.7125508	0.18	
9081.00	90.740	91.660	7268.02	-1498.08	2386.72	-1426.22	3218759.43	1461310.46	40.5970280	-104.7122377	0.30	
9169.00	90.550	91.790	7267.03	-1410.08	2384.08	-1338.27	3218847.40	1461308.60	40.5970207	-104.7119210	0.26	
9257.00	90.490	91.770	7266.23	-1322.09	2381.34	-1250.32	3218935.37	1461306.66	40.5970132	-104.7116043	0.07	
9345.00	92.250	92.320	7264.12	-1234.12	2378.20	-1162.40	3219023.31	1461304.30	40.5970046	-104.7112877	2.10	
9433.00	90.460	91.750	7262.04	-1146.15	2375.08	-1074.49	3219111.25	1461301.97	40.5969961	-104.7109711	2.13	
9521.00	89.970	91.690	7261.71	-1058.15	2372.44	-986.53	3219199.22	1461300.11	40.5969888	-104.7106544	0.56	
9610.00	89.970	91.610	7261.76	-969.15	2369.88	-897.56	3219288.20	1461298.34	40.5969818	-104.7103340	0.09	
9698.00	90.000	91.550	7261.78	-881.15	2367.45	-809.60	3219376.18	1461296.70	40.5969752	-104.7100173	0.08	
9787.00	90.090	91.750	7261.71	-792.15	2364.89	-720.63	3219465.16	1461294.94	40.5969681	-104.7096969	0.25	
9874.00	90.000	91.790	7261.64	-705.15	2362.20	-633.67	3219552.14	1461293.03	40.5969608	-104.7093838	0.11	
9962.00	90.000	91.550	7261.64	-617.15	2359.63	-545.71	3219640.12	1461291.25	40.5969537	-104.7090671	0.27	
10050.00	90.000	91.640	7261.64	-529.15	2357.18	-457.75	3219728.10	1461289.59	40.5969470	-104.7087503	0.10	
10138.00	90.580	91.650	7261.20	-441.15	2354.66	-369.78	3219816.08	1461287.85	40.5969401	-104.7084336	0.66	
10226.00	91.630	91.760	7259.50	-353.17	2352.04	-281.84	3219904.04	1461286.02	40.5969329	-104.7081169	1.20	
10315.00	89.850	91.660	7258.35	-264.18	2349.39	-192.89	3219993.01	1461284.16	40.5969256	-104.7077966	2.00	
10403.00	90.120	91.730	7258.37	-176.18	2346.78	-104.93	3220080.99	1461282.34	40.5969185	-104.7074798	0.32	

REFERENCE WELLPATH IDENTIFICATION			
Operator	BAYSWATER E&P, LLC	Well	RUBY EAST 1
Field	WELD COUNTY (NAD83/TRUE NORTH)	API	0512351737
Facility	SEC.07-T07N-R65W	Wellbore	RUBY EAST 1 AWB
Slot	SLOT#01 RUBY EAST 1 (2408'FNL & 2429'FWL,SEC.07)		

WELLPATH DATA (211 stations)												
MD [ft]	Inclination [°]	Azimuth [°]	TVD [ft]	Vert Sect [ft]	North [ft]	East [ft]	Grid East [US ft]	Grid North [US ft]	Latitude	Longitude	DLS [°/100ft]	Comments
10491.00	90.150	91.740	7258.17	-88.18	2344.12	-16.97	3220168.97	1461280.46	40.5969111	-104.7071631	0.04	
10579.00	90.580	91.540	7257.61	-0.18	2341.60	70.99	3220256.94	1461278.73	40.5969042	-104.7068464	0.54	
10668.00	89.850	91.570	7257.27	88.82	2339.18	159.96	3220345.93	1461277.11	40.5968976	-104.7065260	0.82	
10755.00	90.120	91.890	7257.29	175.82	2336.56	246.92	3220432.90	1461275.26	40.5968904	-104.7062129	0.48	
10843.00	90.220	91.680	7257.03	263.81	2333.82	334.87	3220520.88	1461273.31	40.5968829	-104.7058962	0.26	
10932.00	90.180	91.590	7256.72	352.81	2331.28	423.84	3220609.86	1461271.56	40.5968759	-104.7055758	0.11	
11020.00	89.910	91.590	7256.65	440.81	2328.84	511.80	3220697.84	1461269.91	40.5968692	-104.7052591	0.31	
11109.00	89.880	91.350	7256.82	529.81	2326.55	600.77	3220786.83	1461268.42	40.5968629	-104.7049387	0.27	
11198.00	90.060	91.560	7256.86	618.81	2324.29	689.75	3220875.81	1461266.96	40.5968567	-104.7046183	0.31	
11286.00	90.430	92.670	7256.49	706.81	2321.05	777.68	3220963.77	1461264.50	40.5968478	-104.7043017	1.33	
11375.00	90.000	92.450	7256.15	795.80	2317.07	866.59	3221052.71	1461261.32	40.5968369	-104.7039815	0.54	
11464.00	90.180	92.670	7256.01	884.79	2313.09	955.50	3221141.65	1461258.14	40.5968259	-104.7036613	0.32	
11552.00	89.940	92.770	7255.92	972.77	2308.92	1043.40	3221229.58	1461254.75	40.5968145	-104.7033448	0.30	
11641.00	90.060	92.720	7255.92	1061.76	2304.66	1132.30	3221318.51	1461251.28	40.5968028	-104.7030247	0.15	
11729.00	90.030	92.640	7255.85	1149.75	2300.54	1220.21	3221406.45	1461247.95	40.5967915	-104.7027082	0.10	
11817.00	90.150	92.580	7255.71	1237.74	2296.53	1308.12	3221494.39	1461244.73	40.5967804	-104.7023916	0.15	
11905.00	90.120	92.730	7255.51	1325.73	2292.46	1396.02	3221582.32	1461241.44	40.5967692	-104.7020751	0.17	
11994.00	90.030	92.710	7255.39	1414.71	2288.23	1484.92	3221671.25	1461238.01	40.5967576	-104.7017550	0.10	
12084.00	90.220	92.520	7255.19	1504.70	2284.13	1574.83	3221761.19	1461234.71	40.5967464	-104.7014312	0.30	
12173.00	90.000	92.610	7255.02	1593.69	2280.15	1663.74	3221850.13	1461231.52	40.5967354	-104.7011111	0.27	
12262.00	90.120	91.770	7254.93	1682.69	2276.74	1752.67	3221939.09	1461228.92	40.5967261	-104.7007908	0.95	
12350.00	90.060	91.580	7254.79	1770.69	2274.17	1840.63	3222027.07	1461227.13	40.5967190	-104.7004741	0.23	
12438.00	89.970	91.720	7254.77	1858.69	2271.64	1928.60	3222115.05	1461225.38	40.5967120	-104.7001574	0.19	
12526.00	90.280	91.560	7254.58	1946.69	2269.12	2016.56	3222203.03	1461223.65	40.5967051	-104.6998406	0.40	
12613.00	90.370	91.840	7254.08	2033.69	2266.54	2103.52	3222290.01	1461221.85	40.5966980	-104.6995275	0.34	
12701.00	90.120	91.680	7253.71	2121.69	2263.84	2191.48	3222377.98	1461219.93	40.5966905	-104.6992108	0.34	
12789.00	90.180	91.780	7253.48	2209.69	2261.18	2279.44	3222465.96	1461218.06	40.5966832	-104.6988940	0.13	
12878.00	89.850	91.440	7253.45	2298.69	2258.68	2368.40	3222554.94	1461216.36	40.5966763	-104.6985737	0.53	
12966.00	89.850	91.450	7253.68	2386.69	2256.46	2456.37	3222642.93	1461214.92	40.5966702	-104.6982569	0.01	
13054.00	89.910	91.450	7253.87	2474.68	2254.23	2544.35	3222730.91	1461213.48	40.5966641	-104.6979401	0.07	

REFERENCE WELLPATH IDENTIFICATION			
Operator	BAYSWATER E&P, LLC	Well	RUBY EAST 1
Field	WELD COUNTY (NAD83/TRUE NORTH)	API	0512351737
Facility	SEC.07-T07N-R65W	Wellbore	RUBY EAST 1 AWB
Slot	SLOT#01 RUBY EAST 1 (2408'FNL & 2429'FWL,SEC.07)		

WELLPATH DATA (211 stations)												
MD [ft]	Inclination [°]	Azimuth [°]	TVD [ft]	Vert Sect [ft]	North [ft]	East [ft]	Grid East [US ft]	Grid North [US ft]	Latitude	Longitude	DLS [°/100ft]	Comments
13141.00	90.030	91.570	7253.91	2561.68	2251.94	2631.32	3222817.90	1461211.97	40.5966578	-104.6976270	0.20	
13230.00	90.120	91.700	7253.80	2650.68	2249.40	2720.28	3222906.88	1461210.23	40.5966508	-104.6973066	0.18	
13318.00	90.030	91.560	7253.68	2738.68	2246.90	2808.24	3222994.86	1461208.51	40.5966439	-104.6969899	0.19	
13406.00	90.090	91.820	7253.59	2826.68	2244.30	2896.20	3223082.84	1461206.70	40.5966367	-104.6966731	0.30	
13493.00	90.430	92.010	7253.19	2913.68	2241.40	2983.16	3223169.81	1461204.57	40.5966287	-104.6963600	0.45	
13582.00	90.060	91.740	7252.81	3002.68	2238.48	3072.11	3223258.78	1461202.45	40.5966207	-104.6960397	0.51	
13671.00	90.060	91.740	7252.72	3091.68	2235.78	3161.07	3223347.75	1461200.55	40.5966132	-104.6957194	0.00	
13760.00	90.060	91.490	7252.63	3180.68	2233.27	3250.03	3223436.74	1461198.84	40.5966063	-104.6953990	0.28	
13848.00	90.150	91.600	7252.47	3268.68	2230.90	3338.00	3223524.72	1461197.25	40.5965998	-104.6950823	0.16	
13937.00	90.060	91.650	7252.30	3357.68	2228.38	3426.96	3223613.70	1461195.52	40.5965928	-104.6947619	0.12	
14026.00	90.000	91.630	7252.26	3446.68	2225.83	3515.93	3223702.68	1461193.77	40.5965858	-104.6944416	0.07	
14114.00	90.180	91.750	7252.12	3534.68	2223.23	3603.89	3223790.66	1461191.96	40.5965786	-104.6941249	0.25	
14203.00	90.120	91.720	7251.89	3623.68	2220.54	3692.85	3223879.64	1461190.06	40.5965712	-104.6938045	0.08	
14290.00	90.550	91.770	7251.38	3710.68	2217.89	3779.80	3223966.61	1461188.19	40.5965639	-104.6934914	0.50	
14378.00	90.580	91.860	7250.51	3798.67	2215.10	3867.76	3224054.58	1461186.19	40.5965562	-104.6931747	0.11	
14466.00	90.460	91.830	7249.71	3886.67	2212.27	3955.71	3224142.55	1461184.14	40.5965484	-104.6928580	0.14	
14555.00	90.370	91.800	7249.07	3975.67	2209.45	4044.66	3224231.52	1461182.12	40.5965406	-104.6925377	0.11	
14642.00	90.490	91.680	7248.41	4062.66	2206.81	4131.62	3224318.50	1461180.26	40.5965333	-104.6922246	0.20	
14729.00	90.150	91.740	7247.93	4149.66	2204.21	4218.58	3224405.48	1461178.44	40.5965261	-104.6919115	0.40	
14818.00	90.090	91.650	7247.74	4238.66	2201.58	4307.54	3224494.45	1461176.60	40.5965189	-104.6915911	0.12	
14906.00	90.060	91.570	7247.63	4326.66	2199.11	4395.50	3224582.44	1461174.92	40.5965120	-104.6912744	0.10	
14995.00	90.180	91.670	7247.44	4415.66	2196.59	4484.47	3224671.42	1461173.19	40.5965051	-104.6909540	0.18	
15082.00	90.060	91.550	7247.26	4502.66	2194.15	4571.43	3224758.40	1461171.53	40.5964983	-104.6906409	0.20	
15170.00	90.250	91.630	7247.02	4590.66	2191.71	4659.40	3224846.38	1461169.87	40.5964916	-104.6903241	0.23	
15259.00	90.060	91.610	7246.78	4679.66	2189.19	4748.36	3224935.36	1461168.15	40.5964846	-104.6900038	0.21	
15348.00	90.250	91.600	7246.54	4768.66	2186.70	4837.33	3225024.34	1461166.46	40.5964778	-104.6896834	0.21	
15435.00	90.460	91.660	7246.00	4855.66	2184.22	4924.29	3225111.32	1461164.76	40.5964709	-104.6893703	0.25	
15523.00	90.220	91.660	7245.48	4943.65	2181.67	5012.25	3225199.30	1461163.00	40.5964639	-104.6890536	0.27	
15611.00	90.150	91.650	7245.19	5031.65	2179.13	5100.21	3225287.28	1461161.24	40.5964568	-104.6887368	0.08	
15700.00	90.000	91.600	7245.08	5120.65	2176.61	5189.18	3225376.26	1461159.51	40.5964499	-104.6884165	0.18	

REFERENCE WELLPATH IDENTIFICATION			
Operator	BAYSWATER E&P, LLC	Well	RUBY EAST 1
Field	WELD COUNTY (NAD83/TRUE NORTH)	API	0512351737
Facility	SEC.07-T07N-R65W	Wellbore	RUBY EAST 1 AWB
Slot	SLOT#01 RUBY EAST 1 (2408'FNL & 2429'FWL,SEC.07)		

WELLPATH DATA (211 stations)												
MD [ft]	Inclination [°]	Azimuth [°]	TVD [ft]	Vert Sect [ft]	North [ft]	East [ft]	Grid East [US ft]	Grid North [US ft]	Latitude	Longitude	DLS ["/100ft]	Comments
15788.00	90.180	91.650	7244.94	5208.65	2174.11	5277.14	3225464.24	1461157.80	40.5964430	-104.6880997	0.21	
15875.00	90.250	91.590	7244.61	5295.65	2171.65	5364.11	3225551.22	1461156.12	40.5964362	-104.6877866	0.11	
15964.00	90.180	91.730	7244.28	5384.65	2169.08	5453.07	3225640.20	1461154.34	40.5964290	-104.6874662	0.18	
16052.00	90.090	91.790	7244.07	5472.65	2166.37	5541.03	3225728.18	1461152.42	40.5964216	-104.6871495	0.12	
16140.00	90.060	91.540	7243.95	5560.65	2163.82	5628.99	3225816.16	1461150.65	40.5964145	-104.6868328	0.29	
16228.00	90.150	91.650	7243.79	5648.65	2161.37	5716.96	3225904.14	1461148.99	40.5964077	-104.6865160	0.16	
16317.00	89.970	91.510	7243.70	5737.65	2158.91	5805.92	3225993.12	1461147.33	40.5964009	-104.6861957	0.26	
16403.00	90.220	91.820	7243.56	5823.65	2156.41	5891.88	3226079.10	1461145.60	40.5963940	-104.6858861	0.46	
16491.00	90.060	91.530	7243.34	5911.65	2153.84	5979.85	3226167.08	1461143.82	40.5963869	-104.6855694	0.38	
16579.00	90.150	91.730	7243.18	5999.65	2151.34	6067.81	3226255.06	1461142.10	40.5963800	-104.6852526	0.25	
16667.00	90.400	91.960	7242.76	6087.65	2148.50	6155.76	3226343.03	1461140.05	40.5963721	-104.6849359	0.39	
16756.00	90.220	91.740	7242.28	6176.65	2145.63	6244.72	3226432.00	1461137.98	40.5963642	-104.6846156	0.32	
16845.00	89.880	91.640	7242.20	6265.65	2143.01	6333.68	3226520.98	1461136.15	40.5963569	-104.6842953	0.40	
16932.00	90.030	91.780	7242.27	6352.65	2140.41	6420.64	3226607.96	1461134.33	40.5963497	-104.6839822	0.24	
17019.00	90.220	91.750	7242.08	6439.65	2137.73	6507.60	3226694.94	1461132.43	40.5963423	-104.6836690	0.22	
17106.00	90.340	91.780	7241.65	6526.64	2135.05	6594.56	3226781.91	1461130.52	40.5963349	-104.6833559	0.14	
17192.00	90.550	91.840	7240.98	6612.64	2132.34	6680.51	3226867.89	1461128.58	40.5963274	-104.6830464	0.25	
17278.00	90.580	91.610	7240.14	6698.64	2129.75	6766.47	3226953.86	1461126.76	40.5963202	-104.6827369	0.27	
17366.00	90.430	91.560	7239.36	6786.63	2127.31	6854.43	3227041.84	1461125.11	40.5963134	-104.6824202	0.18	
17455.00	90.580	91.690	7238.58	6875.63	2124.79	6943.39	3227130.82	1461123.38	40.5963064	-104.6820998	0.22	
17543.00	90.860	92.010	7237.47	6963.62	2121.95	7031.34	3227218.78	1461121.33	40.5962986	-104.6817832	0.48	
17630.00	90.400	91.560	7236.51	7050.62	2119.24	7118.29	3227305.75	1461119.40	40.5962911	-104.6814701	0.74	
17718.00	90.620	91.780	7235.73	7138.61	2116.67	7206.25	3227393.73	1461117.62	40.5962840	-104.6811533	0.35	
17806.00	90.490	91.580	7234.88	7226.61	2114.09	7294.21	3227481.70	1461115.82	40.5962768	-104.6808366	0.27	
17893.00	89.940	91.670	7234.55	7313.61	2111.63	7381.17	3227568.68	1461114.14	40.5962700	-104.6805235	0.64	
17982.00	89.940	91.520	7234.65	7402.61	2109.15	7470.14	3227657.67	1461112.45	40.5962631	-104.6802031	0.17	
18069.00	90.980	91.880	7233.95	7489.60	2106.57	7557.09	3227744.64	1461110.65	40.5962559	-104.6798900	1.26	
18157.00	91.140	91.760	7232.32	7577.59	2103.77	7645.03	3227832.60	1461108.64	40.5962482	-104.6795733	0.23	
18246.00	90.060	91.450	7231.39	7666.58	2101.28	7733.99	3227921.58	1461106.95	40.5962413	-104.6792530	1.26	
18296.00	90.030	91.710	7231.35	7716.58	2099.90	7783.97	3227971.57	1461106.01	40.5962375	-104.6790730	0.52	LAST BH MWD SURVEY

REFERENCE WELLPATH IDENTIFICATION			
Operator	BAYSWATER E&P, LLC	Well	RUBY EAST 1
Field	WELD COUNTY (NAD83/TRUE NORTH)	API	0512351737
Facility	SEC.07-T07N-R65W	Wellbore	RUBY EAST 1 AWB
Slot	SLOT#01 RUBY EAST 1 (2408'FNL & 2429'FWL,SEC.07)		

WELLPATH DATA (211 stations) † = interpolated, ‡ = extrapolated station												
MD [ft]	Inclination [°]	Azimuth [°]	TVD [ft]	Vert Sect [ft]	North [ft]	East [ft]	Grid East [US ft]	Grid North [US ft]	Latitude	Longitude	DLS ["/100ft]	Comments
18320.00†	90.030	91.710	7231.33	7740.58	2099.19	7807.96	3227995.56	1461105.51	40.5962355	-104.6789867	0.00	PROJECTION TO BIT (70'FNL & 470'FEL,SEC.08)

REFERENCE WELLPATH IDENTIFICATION			
Operator	BAYSWATER E&P, LLC	Well	RUBY EAST 1
Field	WELD COUNTY (NAD83/TRUE NORTH)	API	0512351737
Facility	SEC.07-T07N-R65W	Wellbore	RUBY EAST 1 AWB
Slot	SLOT#01 RUBY EAST 1 (2408'FNL & 2429'FWL,SEC.07)		

TARGETS								
Name	TVD [ft]	North [ft]	East [ft]	Grid East [US ft]	Grid North [US ft]	Latitude	Longitude	Shape
SEC.07-T07N-R65W	0.00	0.00	0.00	3220206.89	1458936.65	40.5904770	-104.7071020	polygon
	2D Polygon: dimensions not calculated							
SEC.07/08-T07N-R65W (SB 0'N/S & 460'E/W)	0.00	0.00	0.00	3220206.89	1458936.65	40.5904770	-104.7071020	polygon
	2D Polygon: dimensions not calculated							
SEC.08-T07N-R65W	0.00	0.00	0.00	3220206.89	1458936.65	40.5904770	-104.7071020	polygon
	2D Polygon: dimensions not calculated							
RUBY EAST 1 BHL REV-1(60'FNL & 470'FEL,SEC.08)	7221.00	2109.22	7808.42	3227995.93	1461115.55	40.5962630	-104.6789850	point
RUBY EAST 1 BHL REV-2(60'FNL & 470'FEL,SEC.08)	7241.00	2109.22	7808.42	3227995.93	1461115.55	40.5962630	-104.6789850	point
RUBY EAST 1 LP REV-1(60'FNL & 470'FWL,SEC.07)	7261.00	2406.08	-1956.73	3218228.78	1461325.07	40.5970810	-104.7141480	point
RUBY EAST 1 LP REV-2(60'FNL & 470'FWL,SEC.07)	7271.00	2406.08	-1956.73	3218228.78	1461325.07	40.5970810	-104.7141480	point

REFERENCE WELLPATH IDENTIFICATION			
Operator	BAYSWATER E&P, LLC	Well	RUBY EAST 1
Field	WELD COUNTY (NAD83/TRUE NORTH)	API	0512351737
Facility	SEC.07-T07N-R65W	Wellbore	RUBY EAST 1 AWB
Slot	SLOT#01 RUBY EAST 1 (2408'FNL & 2429'FWL,SEC.07)		

WELLPATH COMPOSITION - Ref Wellbore: RUBY EAST 1 AWB Ref Wellpath: RUBY EAST 1 AWP					
Start MD [ft]	End MD [ft]	Positional Uncertainty Model	Log Name/Comment	Wellbore	Survey Date
16.00	1484.00	OWSG MWD rev2 + IFR1	OWSG MWD rev2 + IFR1 13-1/2" <152 - 1484>	RUBY EAST 1 AWB	7/29/2022
1484.00	18320.00	OWSG MWD rev2 + IFR1 + Multi-Station Correction	OWSG MWD rev2 + IFR1 + MS 8-1/2" <1604 - 18296>	RUBY EAST 1 AWB	9/29/2022

REFERENCE WELLPATH IDENTIFICATION			
Operator	BAYSWATER E&P, LLC	Well	RUBY EAST 1
Field	WELD COUNTY (NAD83/TRUE NORTH)	API	0512351737
Facility	SEC.07-T07N-R65W	Wellbore	RUBY EAST 1 AWB
Slot	SLOT#01 RUBY EAST 1 (2408'FNL & 2429'FWL,SEC.07)		

WELLPATH COMMENTS				
MD [ft]	Inclination [°]	Azimuth [°]	TVD [ft]	Comment
152.00	0.710	16.440	152.00	FIRST BH SURFACE MWD SURVEY
1484.00	19.620	305.170	1464.76	LAST BH SURFACE MWD SURVEY
1604.00	19.270	305.730	1577.91	FIRST BH MWD SURVEY
8540.00	88.804	90.408	7271.55	CROSS SETBACK HEEL (67'FNL & 460'FWL,SEC.07)
18296.00	90.030	91.710	7231.35	LAST BH MWD SURVEY
18320.00	90.030	91.710	7231.33	PROJECTION TO BIT (70'FNL & 470'FEL,SEC.08)