



# **Bayswater Exploration & Production LLC**

## **SURFACE POST JOB REPORT**

**Ruby East #1 05-123-51737**  
**S:7 T:7N R:65W Weld CO**

CallSheet #: 82664  
Proposal #: 61876



**SURFACE Post Job Report**

**Attention:** Trevor Smith | (720) 335-9045 | [trevor.smith@iptenergyservices.com](mailto:trevor.smith@iptenergyservices.com)  
Bayswater Exploration & Production LLC  
730 17TH STREET | DENVER, CO 80202

---

Dear Trevor Smith,

Thank you for the opportunity to provide cementing services on this well. American Cementing strives to achieve complete customer satisfaction. If you have any questions regarding the services or data provided, please contact American Cementing at any time.

Sincerely,

**Jason Creel**

Field Engineer Lead | (307) 256-0306 | [jason.creel@americacementing.com](mailto:jason.creel@americacementing.com)

**Field Office**      1716 E Allison Rd, Cheyenne, WY 82007  
Phone: (307) 414-0049

## Job Details & Summary

### Geometry

Type	Function	OD (in)	ID (in)	Weight (lb/ft)	Top (ft)	Bottom (ft)	Excess (%)
Open Hole	Outer		13.5		0	1555	25
Casing	Inner	9.625	8.921	36	0	1555	0

### Equipment / People

Unit Type	Unit
Cement Pump Float	CPF-071
Field Storage Silo	FSS(CTS)-449
Tractors	TRC(TRB)-437
Light Duty Vehicles	LDV-048

### Timing

Event	Date/Time
Call Out	7/27/2022 06:30
Depart Facility	7/27/2022 09:00
On Location	7/27/2022 10:20
Rig Up Iron	7/27/2022 10:50
Job Started	7/27/2022 21:31
Job Completed	7/27/2022 22:27
Rig Down Iron	7/27/2022 22:40
Depart Location	7/28/2022 00:00

### General Job Information

Metrics	Value
Well Fluid Density	8.34 lb/gal
Well Fluid Type	Water
Rig Circulation Vol	300 bbls
Rig Circulation Time	0.5 hours
Calculated Displacement	114 bbls
Actual Displacement	113 bbls
Total Spacer to Surface	20 bbls
Total CMT to Surface	33 bbls
Well Topped Out	No

### Casing Equipment

Type	Description	Qty
CENTRALIZER,9-5/8"NON-WELD	Bow Spring	18

### Job Details

Metrics	Value
Flare Prior to Job	No
Flare Prior to Job	0 units
Flare During Job	No
Flare During Job	0 units
Flare at End of Job	No
Flare at End of Job	0 units
Well Full Prior to Job	Yes
Well Fluid Density Into Well	8.34 lb/gal
Well Fluid Density Out of Well	8.34 lb/gal

### Job Details (cont.)

Metrics	Value
BHCT	86 °F
BHST	110 °F

### Water Analysis

Metrics	Value	Recommended
Water Source	None	
Temperature	60 °F	50-80 °F
pH Level	7	5.5-8.5
Chlorides	0 mg/L	0-3000 mg/L
Total Alkalinity	140	0-1000
Total Hardness	250 mg/L	0-500 mg/L
Carbonates	40 mg/L	0-100 mg/L
Sulfates	<200 mg/L	0-1500 mg/L
Potassium	0 mg/L	0-3000 mg/L
Iron	0 mg/L	0-300 mg/L

### Circulation

Lost Circulation Experienced
No

### Job Execution Information

Fluid	Product	Function	Density (lb/gal)	Yield (ft <sup>3</sup> /sk)	Water Rq. (gal/sk)	Water Rq. (gal/bbl)	Volume (sks)	Volume (bbl)	Designed Top (ft)
1	Fresh Water	Flush	8.34			42.00		20.00	0
2	ACem S100.3.1C	Lead	12.00	2.53	14.86		255.00	114.86	0
3	ACem S100.3.1C	Tail	12.50	2.23	12.58		145.00	57.46	1055
4	D822	DisplacementFinal	8.34			42.00		114.00	0

### Job Fluid Details

Fluid	Type	Fluid	Product	Function	Conc.	Uom
2	Lead	ACem S100.3.1C	ASTM TYPE III	Cement	100.00	%
2	Lead	ACem S100.3.1C	A-10	Accelerator	5.00	%BWOB
2	Lead	ACem S100.3.1C	A-2	Accelerator	2.00	lb/sk
2	Lead	ACem S100.3.1C	A-7P	Accelerator	2.00	lb/sk
2	Lead	ACem S100.3.1C	FP-24	Defoamer	0.30	%BWOB
2	Lead	ACem S100.3.1C	IntegraSeal POLI	LostCirculation	0.13	lb/sk
3	Tail	ACem S100.3.1C	ASTM TYPE III	Cement	100.00	%
3	Tail	ACem S100.3.1C	A-10	Accelerator	5.00	%BWOB
3	Tail	ACem S100.3.1C	A-2	Accelerator	2.00	lb/sk
3	Tail	ACem S100.3.1C	A-7P	Accelerator	2.00	lb/sk
3	Tail	ACem S100.3.1C	FP-24	Defoamer	0.30	%BWOB
3	Tail	ACem S100.3.1C	IntegraSeal POLI	LostCirculation	0.13	lb/sk

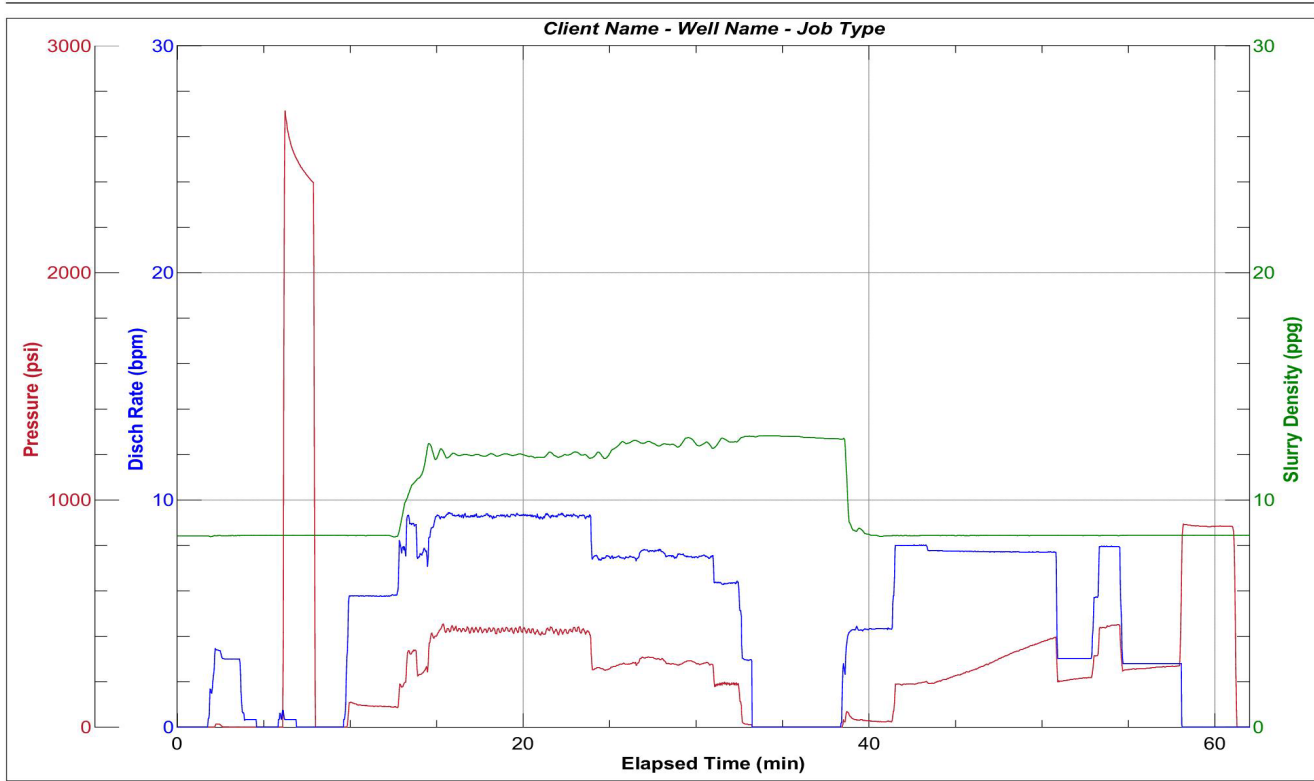
## Job Logs

Line	Event	Date (MM/DD/YY)	Time (HH:MM)	Density (lb/gal)	Pump Rate (bpm)	Pump Volume (bbls)	Pipe Pressure (psi)	Comment
1	Call Out	7/27/2022	06:30					ACC gets called out requested time on Location was 12:30
2	Depart Facility	7/27/2022	09:00					ACC departs facility
3	Arrive To Location	7/27/2022	10:20					ACC arrives to location rig is currently running casing
4	Rig Up	7/27/2022	10:50					ACC spots in units and gets rigged up
5	Safety Meeting	7/27/2022	21:05					ACC had a pre job safety meeting with rig hands and OSR, Went over job procedure
6	Pressure Test	7/27/2022	21:31				2703	Pressure test pumps and lines to 2703 psi
7	Pump FW Spacer W/Dye	7/27/2022	21:34	8.33	5.5	20	103	Pumped 20 bbls of of blue dye tracer at 5.5 bpm w/ 103 psi
8	Pump Lead Cement	7/27/2022	21:38	12	9.3	114.9	403	Pumped 114.9 bbls Lead Cement (255 sks 12 ppg 2.53 yld 14.9 g/sk ) at 9.3 bpm w/ 403 psi
9	Pump Tail Cement	7/27/2022	21:50	12.5	7.5	57.59	278	Pumped 57.49 bbls Tail Cement (145 sks 12.5 ppg 2.23 yld 12.6 /sk )at 7.5 bpm w/ 278 psi
10	Shut Down	7/27/2022	21:58					Shut Down Pumping
11	Drop Plug	7/27/2022	22:01					Dropped Plug
12	Pump Disp	7/27/2022	22:03	8.34	7.7		199	Start pumping disp at 7.7 bpm w/ 199 psi
13	Dye Tracer To Surface	7/27/2022	22:13	8.34	7.7	60	333	At 60 bbls away into disp got blue dye tracer to surface at 7.7 bpm w/ 333 psi
14	Cement To Surface	7/27/2022	22:15	8.34	3	80	206	At 80 bbls away into disp got Cement back to surface. Slowed down for rig to switch their pumps. At 3 bpm w/ 206 psi
15	Picked Up Rated	7/27/2022	22:18	8.34	8	90	403	Picked up rate 90 bbls away into disp at 8 bpm w/ 403 psi
16	Slow Down Rate	7/27/2022	22:19	8.34	3	100	268	At 100 bbls away into disp. Slow down rate to 3 bpm w/ 268 psi
17	Land Plug	7/27/2022	22:22	8.34	3	113	268	Landed plug at 113 bbls away into disp FCP was 268 psi , Bumped plug to 893 psi
18	Check Floats	7/27/2022	22:27					Check floats got .5 BBL back
19	Rig Down	7/27/2022	22:40					ACC starts rigging down equipment and iron
20	Depart Location	7/28/2022	00:00					ACC departs location
21	Other	7/28/2022	00:01			33		Total CMT to Surface - 33 BBLS

# Pump Diagrams



JobMaster Program Version 5.01C1  
Job Number: 82664  
Customer: Bayswater  
Well Name: Ruby East 1



BJ Services

Job Start: Wednesday, July 27, 2022