

NOBLE ENERGY, INC

Location: COLORADO Slot: SLOT#16 GABEL A10-615 (2290°FSL & 2210°FEL, SEC.12)
 Field: WELD COUNTY (NOBLE NAD 83 GRID) Well: GABEL A10-615
 Facility: SEC.12-T06N-R64W Wellbore: GABEL A10-615 PWB

Plot reference wellpath is GABEL A10-615 (REV-A.0) PWP
 True vertical depths are referenced to (4716'GL+30'KB@4746'RKB) (RKB)
 Reference wellpath measured depths are referenced to (4716'GL+30'KB@4746'RKB) (RKB)
 (4716'GL+30'KB@4746'RKB) (RKB) to Mean Sea Level: 4746 feet
 Mean Sea Level to Ground level (At Slot: SLOT#16 GABEL A10-615 (2290°FSL & 2210°FEL, SEC.12)): 0 feet
 Offset wellpath MDs are referenced to each path's default MD datum

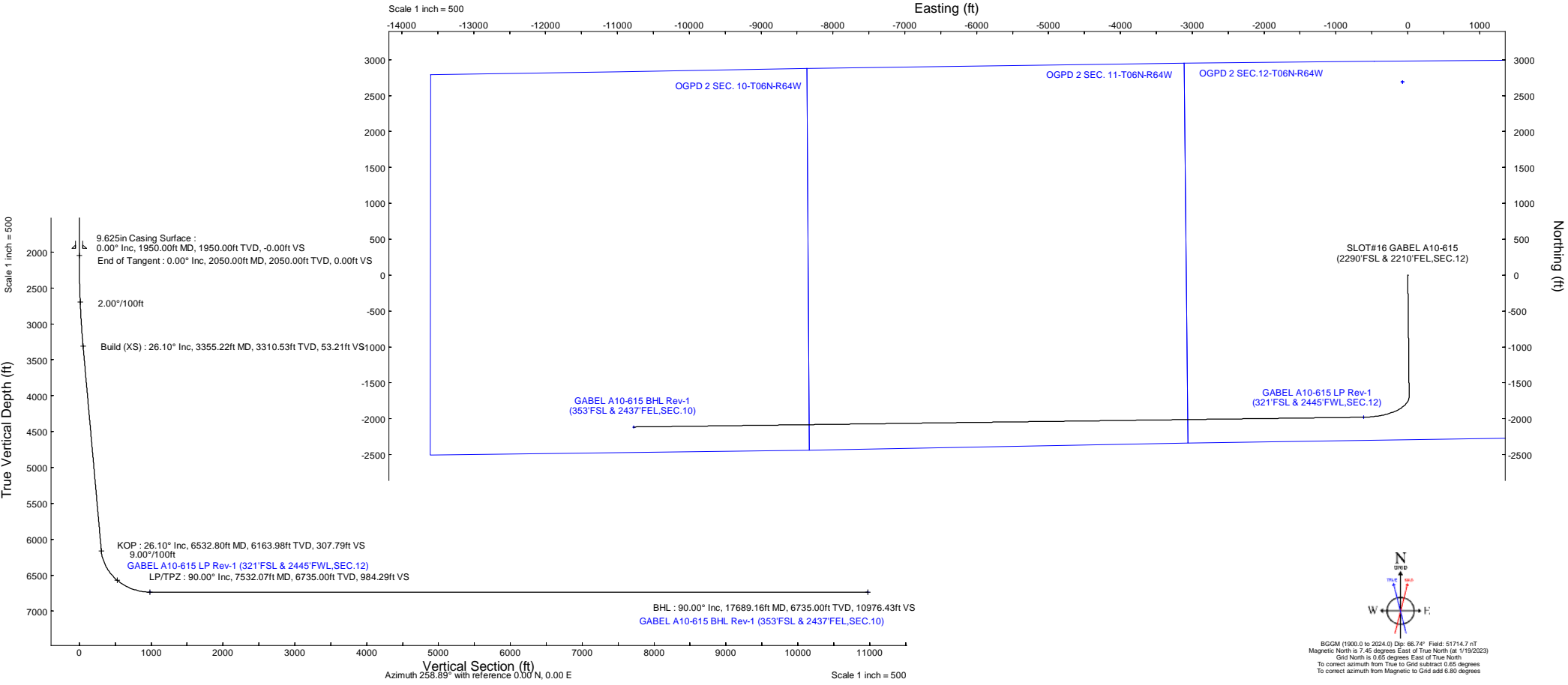
Grid System: NAD83 / Lambert Colorado SP, Northern Zone (501), US feet
 North Reference: Grid north
 Scale: True distance
 Coordinates are in feet referenced to Slot
 Depths are in feet
 Created by: guenaler on 2023-01-20; Database: WellArchitectDB

Location Information			
Facility Name		Grid East (US ft)	Grid North (US ft)
SEC.12-T06N-R64W		3278923.071	1429205.676
Latitude	Longitude		
40°30'26.0640"N	104°29'48.8760"W		
Slot		Local N (ft)	Local E (ft)
SLOT#16 GABEL A10-615 (2290°FSL & 2210°FEL, SEC.12)		-2688.00	74.91
Grid East (US ft)	Grid North (US ft)	Latitude	Longitude
3278997.976	1426517.775	40°29'59.4960"N	104°29'48.3000"W
(4716'GL+30'KB@4746'RKB) (RKB) to Ground level (At Slot: SLOT#16 GABEL A10-615 (2290°FSL & 2210°FEL, SEC.12))		-4746ft	
Mean Sea Level to Ground level (At Slot: SLOT#16 GABEL A10-615 (2290°FSL & 2210°FEL, SEC.12))		0ft	
(4716'GL+30'KB@4746'RKB) (RKB) to Mean Sea Level		-4746ft	

Survey Program					
Start MD (ft)	End MD (ft)	Tool	Model	Log Name/Comment	Wellbore
30.00	17689.16	OWSG MWD rev2	OWSG MWD rev2 (MS+IFR1)		GABEL A10-615 PWB

Well Profile Data								
Design Comment	MD (ft)	Inc (°)	Az (°)	TVD (ft)	Local N (ft)	Local E (ft)	DLS (°/100ft)	VS (ft)
SHL	30.00	0.000	179.381	30.00	0.00	0.00	0.00	0.00
End of Tangent	2050.00	0.000	179.381	2050.00	0.00	0.00	0.00	0.00
Build (XS)	3355.22	26.104	179.381	3310.53	-292.21	3.16	2.00	53.21
KOP	6532.80	26.104	179.381	6163.98	-1690.29	18.26	0.00	307.79
LP/TPZ	7532.07	90.000	269.230	6735.00	-1978.61	-614.54	9.00	984.29
BHL	17689.16	90.000	269.230	6735.00	-2115.15	-10770.71	0.00	10976.43

Targets								
Name	MD (ft)	TVD (ft)	Local N (ft)	Local E (ft)	Grid East (US ft)	Grid North (US ft)	Latitude	Longitude
OGPD 2 SEC. 10-T06N-R64W	N/A	-8.00	2688.00	-74.91	3278923.07	1429205.68	40°30'26.0640"N	104°29'48.8760"W
OGPD 2 SEC. 11-T06N-R64W	N/A	-8.00	2688.00	-74.91	3278923.07	1429205.68	40°30'26.0640"N	104°29'48.8760"W
OGPD 2 SEC. 12-T06N-R64W	N/A	-8.00	2688.00	-74.91	3278923.07	1429205.68	40°30'26.0640"N	104°29'48.8760"W
GABEL A10-615 BHL Rev1 (353°FSL & 2437°FEL, SEC.10)	17689.16	6735.00	-2115.15	-10770.71	3268227.65	1424402.71	40°29'39.7774"N	104°32'8.0112"W
GABEL A10-615 LP Rev1 (321°FSL & 2445°FEL, SEC.12)	7532.07	6735.00	-1978.61	-614.54	3278383.46	1424539.23	40°29'40.0143"N	104°29'56.5435"W





Planned Wellpath Report

GABEL A10-615 (REV-A.0) PWP

Page 1 of 7



REFERENCE WELLPATH IDENTIFICATION

Operator	NOBLE ENERGY, INC	Well	GABEL A10-615
Field	WELD COUNTY (NOBLE NAD 83 GRID)	API/Legal	
Facility	SEC.12-T06N-R64W	Wellbore	GABEL A10-615 PWB
Slot	SLOT#16 GABEL A10-615 (2290'FSL & 2210'FEL,SEC.12)		

REPORT SETUP INFORMATION

Projection System	NAD83 / Lambert Colorado SP, Northern Zone (501), US feet	Software System	WellArchitect® 6.0
North Reference	Grid	User	Guenaler
Scale	0.999966	Report Generated	1/20/2023 at 9:07:33 PM
Convergence at slot	0.65° East	Database	WellArchitectDB

WELLPATH LOCATION

	Local coordinates		Grid coordinates		Geographic coordinates	
	North[ft]	East[ft]	Easting[US ft]	Northing[US ft]	Latitude	Longitude
Slot Location	-2688.00	74.91	3278997.98	1426517.78	40.4998600°	-104.4967500°
Facility Reference Pt			3278923.07	1429205.68	40.5072400°	-104.4969100°
Field Reference Pt			3000000.00	4454105.15	48.7761986°	-105.5000000°

WELLPATH DATUM

Calculation method	Minimum curvature	(4716'GL+30'KB@4746'RKB) (RKB) to Facility Vertical Datum	4746.00ft
Horizontal Reference Pt	Slot	(4716'GL+30'KB@4746'RKB) (RKB) to Mean Sea Level	4746.00ft
Vertical Reference Pt	(4716'GL+30'KB@4746'RKB) (RKB)	(4716'GL+30'KB@4746'RKB) (RKB) to Ground Level at Slot (SLOT#16 GABEL A10-615 (2290'FSL & 2210'FEL,SEC.12))	4746.00ft
MD Reference Pt	(4716'GL+30'KB@4746'RKB) (RKB)	Section Origin	N 0.00, E 0.00 ft
Field Vertical Reference	Mean Sea Level	Section Azimuth	258.89°



Planned Wellpath Report

GABEL A10-615 (REV-A.0) PWP
Page 2 of 7



REFERENCE WELLPATH IDENTIFICATION			
Operator	NOBLE ENERGY, INC	Well	GABEL A10-615
Field	WELD COUNTY (NOBLE NAD 83 GRID)	API/Legal	
Facility	SEC.12-T06N-R64W	Wellbore	GABEL A10-615 PWB
Slot	SLOT#16 GABEL A10-615 (2290'FSL & 2210'FEL,SEC.12)		

WELLPATH DATA (183 stations) † = interpolated, ‡ = extrapolated station										
MD [ft]	Inclination [°]	Azimuth [°]	TVD [ft]	Vert Sect [ft]	North [ft]	East [ft]	Latitude	Longitude	DLS [°/100ft]	Comments
0.00†	0.000	179.381	0.00	0.00	0.00	0.00	40.4998600	-104.4967500	0.00	
30.00	0.000	179.381	30.00	0.00	0.00	0.00	40.4998600	-104.4967500	0.00	SHL
130.00†	0.000	179.381	130.00	0.00	0.00	0.00	40.4998600	-104.4967500	0.00	
230.00†	0.000	179.381	230.00	0.00	0.00	0.00	40.4998600	-104.4967500	0.00	
330.00†	0.000	179.381	330.00	0.00	0.00	0.00	40.4998600	-104.4967500	0.00	
430.00†	0.000	179.381	430.00	0.00	0.00	0.00	40.4998600	-104.4967500	0.00	
530.00†	0.000	179.381	530.00	0.00	0.00	0.00	40.4998600	-104.4967500	0.00	
630.00†	0.000	179.381	630.00	0.00	0.00	0.00	40.4998600	-104.4967500	0.00	
730.00†	0.000	179.381	730.00	0.00	0.00	0.00	40.4998600	-104.4967500	0.00	
830.00†	0.000	179.381	830.00	0.00	0.00	0.00	40.4998600	-104.4967500	0.00	
930.00†	0.000	179.381	930.00	0.00	0.00	0.00	40.4998600	-104.4967500	0.00	
1030.00†	0.000	179.381	1030.00	0.00	0.00	0.00	40.4998600	-104.4967500	0.00	
1130.00†	0.000	179.381	1130.00	0.00	0.00	0.00	40.4998600	-104.4967500	0.00	
1230.00†	0.000	179.381	1230.00	0.00	0.00	0.00	40.4998600	-104.4967500	0.00	
1330.00†	0.000	179.381	1330.00	0.00	0.00	0.00	40.4998600	-104.4967500	0.00	
1430.00†	0.000	179.381	1430.00	0.00	0.00	0.00	40.4998600	-104.4967500	0.00	
1530.00†	0.000	179.381	1530.00	0.00	0.00	0.00	40.4998600	-104.4967500	0.00	
1630.00†	0.000	179.381	1630.00	0.00	0.00	0.00	40.4998600	-104.4967500	0.00	
1730.00†	0.000	179.381	1730.00	0.00	0.00	0.00	40.4998600	-104.4967500	0.00	
1830.00†	0.000	179.381	1830.00	0.00	0.00	0.00	40.4998600	-104.4967500	0.00	
1930.00†	0.000	179.381	1930.00	0.00	0.00	0.00	40.4998600	-104.4967500	0.00	
2030.00†	0.000	179.381	2030.00	0.00	0.00	0.00	40.4998600	-104.4967500	0.00	
2050.00	0.000	179.381	2050.00	0.00	0.00	0.00	40.4998600	-104.4967500	0.00	End of Tangent
2130.00†	1.600	179.381	2129.99	0.20	-1.12	0.01	40.4998569	-104.4967500	2.00	
2230.00†	3.600	179.381	2229.88	1.03	-5.65	0.06	40.4998445	-104.4967500	2.00	
2330.00†	5.600	179.381	2329.55	2.49	-13.67	0.15	40.4998225	-104.4967500	2.00	
2430.00†	7.600	179.381	2428.89	4.58	-25.16	0.27	40.4997909	-104.4967500	2.00	
2530.00†	9.600	179.381	2527.76	7.30	-40.12	0.43	40.4997499	-104.4967501	2.00	
2630.00†	11.600	179.381	2626.05	10.65	-58.51	0.63	40.4996994	-104.4967501	2.00	
2730.00†	13.600	179.381	2723.63	14.63	-80.32	0.87	40.4996395	-104.4967501	2.00	
2830.00†	15.600	179.381	2820.40	19.22	-105.53	1.14	40.4995703	-104.4967502	2.00	
2930.00†	17.600	179.381	2916.23	24.42	-134.09	1.45	40.4994919	-104.4967502	2.00	
3030.00†	19.600	179.381	3011.00	30.22	-165.98	1.79	40.4994044	-104.4967503	2.00	
3130.00†	21.600	179.381	3104.60	36.63	-201.16	2.17	40.4993078	-104.4967504	2.00	
3230.00†	23.600	179.381	3196.92	43.63	-239.59	2.59	40.4992023	-104.4967504	2.00	
3330.00†	25.600	179.381	3287.83	51.21	-281.21	3.04	40.4990881	-104.4967505	2.00	
3355.22	26.104	179.381	3310.53	53.21	-292.21	3.16	40.4990579	-104.4967505	2.00	Build (XS)
3430.00†	26.104	179.381	3377.68	59.20	-325.11	3.51	40.4989676	-104.4967506	0.00	
3530.00†	26.104	179.381	3467.48	67.21	-369.11	3.99	40.4988468	-104.4967507	0.00	
3630.00†	26.104	179.381	3557.28	75.23	-413.11	4.46	40.4987260	-104.4967508	0.00	
3730.00†	26.104	179.381	3647.08	83.24	-457.11	4.94	40.4986052	-104.4967508	0.00	
3830.00†	26.104	179.381	3736.88	91.25	-501.10	5.41	40.4984845	-104.4967509	0.00	
3930.00†	26.104	179.381	3826.68	99.26	-545.10	5.89	40.4983637	-104.4967510	0.00	
4030.00†	26.104	179.381	3916.48	107.27	-589.10	6.37	40.4982429	-104.4967511	0.00	
4130.00†	26.104	179.381	4006.28	115.28	-633.10	6.84	40.4981221	-104.4967512	0.00	



Planned Wellpath Report

GABEL A10-615 (REV-A.0) PWP
Page 3 of 7



REFERENCE WELLPATH IDENTIFICATION			
Operator	NOBLE ENERGY, INC	Well	GABEL A10-615
Field	WELD COUNTY (NOBLE NAD 83 GRID)	API/Legal	
Facility	SEC.12-T06N-R64W	Wellbore	GABEL A10-615 PWB
Slot	SLOT#16 GABEL A10-615 (2290'FSL & 2210'FEL,SEC.12)		

WELLPATH DATA (183 stations) † = interpolated, ‡ = extrapolated station										
MD [ft]	Inclination [°]	Azimuth [°]	TVD [ft]	Vert Sect [ft]	North [ft]	East [ft]	Latitude	Longitude	DLS [°/100ft]	Comments
4230.00†	26.104	179.381	4096.08	123.30	-677.10	7.32	40.4980014	-104.4967512	0.00	
4330.00†	26.104	179.381	4185.88	131.31	-721.09	7.79	40.4978806	-104.4967513	0.00	
4430.00†	26.104	179.381	4275.68	139.32	-765.09	8.27	40.4977598	-104.4967514	0.00	
4530.00†	26.104	179.381	4365.48	147.33	-809.09	8.74	40.4976390	-104.4967515	0.00	
4630.00†	26.104	179.381	4455.28	155.34	-853.09	9.22	40.4975183	-104.4967516	0.00	
4730.00†	26.104	179.381	4545.07	163.36	-897.09	9.69	40.4973975	-104.4967516	0.00	
4830.00†	26.104	179.381	4634.87	171.37	-941.09	10.17	40.4972767	-104.4967517	0.00	
4930.00†	26.104	179.381	4724.67	179.38	-985.08	10.64	40.4971559	-104.4967518	0.00	
5030.00†	26.104	179.381	4814.47	187.39	-1029.08	11.12	40.4970352	-104.4967519	0.00	
5130.00†	26.104	179.381	4904.27	195.40	-1073.08	11.60	40.4969144	-104.4967520	0.00	
5230.00†	26.104	179.381	4994.07	203.42	-1117.08	12.07	40.4967936	-104.4967520	0.00	
5330.00†	26.104	179.381	5083.87	211.43	-1161.08	12.55	40.4966728	-104.4967521	0.00	
5430.00†	26.104	179.381	5173.67	219.44	-1205.08	13.02	40.4965521	-104.4967522	0.00	
5530.00†	26.104	179.381	5263.47	227.45	-1249.07	13.50	40.4964313	-104.4967523	0.00	
5630.00†	26.104	179.381	5353.27	235.46	-1293.07	13.97	40.4963105	-104.4967524	0.00	
5730.00†	26.104	179.381	5443.07	243.47	-1337.07	14.45	40.4961897	-104.4967524	0.00	
5830.00†	26.104	179.381	5532.87	251.49	-1381.07	14.92	40.4960690	-104.4967525	0.00	
5930.00†	26.104	179.381	5622.67	259.50	-1425.07	15.40	40.4959482	-104.4967526	0.00	
6030.00†	26.104	179.381	5712.47	267.51	-1469.06	15.87	40.4958274	-104.4967527	0.00	
6130.00†	26.104	179.381	5802.27	275.52	-1513.06	16.35	40.4957066	-104.4967528	0.00	
6230.00†	26.104	179.381	5892.07	283.53	-1557.06	16.83	40.4955858	-104.4967528	0.00	
6330.00†	26.104	179.381	5981.86	291.55	-1601.06	17.30	40.4954651	-104.4967529	0.00	
6430.00†	26.104	179.381	6071.66	299.56	-1645.06	17.78	40.4953443	-104.4967530	0.00	
6530.00†	26.104	179.381	6161.46	307.57	-1689.06	18.25	40.4952235	-104.4967531	0.00	
6532.80	26.104	179.381	6163.98	307.79	-1690.29	18.26	40.4952201	-104.4967531	0.00	KOP
6630.00†	27.453	198.642	6250.92	322.84	-1732.98	11.32	40.4951032	-104.4967798	9.00	
6730.00†	31.247	215.370	6338.21	353.14	-1776.06	-11.11	40.4949856	-104.4968622	9.00	
6830.00†	36.732	228.189	6421.20	397.76	-1817.23	-48.49	40.4948738	-104.4969982	9.00	
6930.00†	43.264	237.856	6497.84	455.57	-1855.48	-99.90	40.4947704	-104.4971846	9.00	
7030.00†	50.429	245.343	6566.24	525.17	-1889.86	-164.07	40.4946780	-104.4974167	9.00	
7130.00†	57.982	251.388	6624.73	604.84	-1919.53	-239.43	40.4945989	-104.4976889	9.00	
7230.00†	65.778	256.495	6671.85	692.61	-1943.76	-324.12	40.4945351	-104.4979943	9.00	
7330.00†	73.724	261.005	6706.44	786.32	-1961.95	-416.05	40.4944880	-104.4983256	9.00	
7430.00†	81.758	265.160	6727.67	883.67	-1973.66	-512.96	40.4944589	-104.4986745	9.00	
7530.00†	89.833	269.148	6735.00	982.26	-1978.58	-612.47	40.4944484	-104.4990324	9.00	
7532.07	90.000	269.230	6735.00†	984.29	-1978.61	-614.54	40.4944484	-104.4990399	9.00	LP/TPZ
7630.00†	90.000	269.230	6735.00	1080.64	-1979.93	-712.46	40.4944478	-104.4993920	0.00	
7730.00†	90.000	269.230	6735.00	1179.01	-1981.27	-812.45	40.4944472	-104.4997515	0.00	
7830.00†	90.000	269.230	6735.00	1277.39	-1982.62	-912.44	40.4944466	-104.5001110	0.00	
7930.00†	90.000	269.230	6735.00	1375.77	-1983.96	-1012.43	40.4944460	-104.5004706	0.00	
8030.00†	90.000	269.230	6735.00	1474.14	-1985.31	-1112.43	40.4944454	-104.5008301	0.00	
8130.00†	90.000	269.230	6735.00	1572.52	-1986.65	-1212.42	40.4944448	-104.5011897	0.00	
8230.00†	90.000	269.230	6735.00	1670.89	-1988.00	-1312.41	40.4944443	-104.5015492	0.00	
8330.00†	90.000	269.230	6735.00	1769.27	-1989.34	-1412.40	40.4944437	-104.5019087	0.00	
8430.00†	90.000	269.230	6735.00	1867.65	-1990.68	-1512.39	40.4944431	-104.5022683	0.00	



Planned Wellpath Report

GABEL A10-615 (REV-A.0) PWP
Page 4 of 7



REFERENCE WELLPATH IDENTIFICATION			
Operator	NOBLE ENERGY, INC	Well	GABEL A10-615
Field	WELD COUNTY (NOBLE NAD 83 GRID)	API/Legal	
Facility	SEC.12-T06N-R64W	Wellbore	GABEL A10-615 PWB
Slot	SLOT#16 GABEL A10-615 (2290'FSL & 2210'FEL,SEC.12)		

WELLPATH DATA (183 stations) † = interpolated, ‡ = extrapolated station										
MD [ft]	Inclination [°]	Azimuth [°]	TVD [ft]	Vert Sect [ft]	North [ft]	East [ft]	Latitude	Longitude	DLS [°/100ft]	Comments
8530.00†	90.000	269.230	6735.00	1966.02	-1992.03	-1612.38	40.4944424	-104.5026278	0.00	
8630.00†	90.000	269.230	6735.00	2064.40	-1993.37	-1712.37	40.4944418	-104.5029874	0.00	
8730.00†	90.000	269.230	6735.00	2162.77	-1994.72	-1812.36	40.4944412	-104.5033469	0.00	
8830.00†	90.000	269.230	6735.00	2261.15	-1996.06	-1912.35	40.4944406	-104.5037064	0.00	
8930.00†	90.000	269.230	6735.00	2359.53	-1997.40	-2012.34	40.4944400	-104.5040660	0.00	
9030.00†	90.000	269.230	6735.00	2457.90	-1998.75	-2112.34	40.4944394	-104.5044255	0.00	
9130.00†	90.000	269.230	6735.00	2556.28	-2000.09	-2212.33	40.4944388	-104.5047851	0.00	
9230.00†	90.000	269.230	6735.00	2654.65	-2001.44	-2312.32	40.4944382	-104.5051446	0.00	
9330.00†	90.000	269.230	6735.00	2753.03	-2002.78	-2412.31	40.4944376	-104.5055042	0.00	
9430.00†	90.000	269.230	6735.00	2851.41	-2004.13	-2512.30	40.4944370	-104.5058637	0.00	
9530.00†	90.000	269.230	6735.00	2949.78	-2005.47	-2612.29	40.4944364	-104.5062232	0.00	
9630.00†	90.000	269.230	6735.00	3048.16	-2006.81	-2712.28	40.4944358	-104.5065828	0.00	
9730.00†	90.000	269.230	6735.00	3146.53	-2008.16	-2812.27	40.4944351	-104.5069423	0.00	
9830.00†	90.000	269.230	6735.00	3244.91	-2009.50	-2912.26	40.4944345	-104.5073019	0.00	
9930.00†	90.000	269.230	6735.00	3343.29	-2010.85	-3012.25	40.4944339	-104.5076614	0.00	
10030.00†	90.000	269.230	6735.00	3441.66	-2012.19	-3112.24	40.4944333	-104.5080209	0.00	
10130.00†	90.000	269.230	6735.00	3540.04	-2013.53	-3212.24	40.4944327	-104.5083805	0.00	
10230.00†	90.000	269.230	6735.00	3638.41	-2014.88	-3312.23	40.4944320	-104.5087400	0.00	
10330.00†	90.000	269.230	6735.00	3736.79	-2016.22	-3412.22	40.4944314	-104.5090996	0.00	
10430.00†	90.000	269.230	6735.00	3835.17	-2017.57	-3512.21	40.4944308	-104.5094591	0.00	
10530.00†	90.000	269.230	6735.00	3933.54	-2018.91	-3612.20	40.4944302	-104.5098186	0.00	
10630.00†	90.000	269.230	6735.00	4031.92	-2020.26	-3712.19	40.4944296	-104.5101782	0.00	
10730.00†	90.000	269.230	6735.00	4130.29	-2021.60	-3812.18	40.4944289	-104.5105377	0.00	
10830.00†	90.000	269.230	6735.00	4228.67	-2022.94	-3912.17	40.4944283	-104.5108973	0.00	
10930.00†	90.000	269.230	6735.00	4327.05	-2024.29	-4012.16	40.4944277	-104.5112568	0.00	
11030.00†	90.000	269.230	6735.00	4425.42	-2025.63	-4112.15	40.4944270	-104.5116163	0.00	
11130.00†	90.000	269.230	6735.00	4523.80	-2026.98	-4212.15	40.4944264	-104.5119759	0.00	
11230.00†	90.000	269.230	6735.00	4622.17	-2028.32	-4312.14	40.4944258	-104.5123354	0.00	
11330.00†	90.000	269.230	6735.00	4720.55	-2029.67	-4412.13	40.4944251	-104.5126950	0.00	
11430.00†	90.000	269.230	6735.00	4818.92	-2031.01	-4512.12	40.4944245	-104.5130545	0.00	
11530.00†	90.000	269.230	6735.00	4917.30	-2032.35	-4612.11	40.4944239	-104.5134140	0.00	
11630.00†	90.000	269.230	6735.00	5015.68	-2033.70	-4712.10	40.4944232	-104.5137736	0.00	
11730.00†	90.000	269.230	6735.00	5114.05	-2035.04	-4812.09	40.4944226	-104.5141331	0.00	
11830.00†	90.000	269.230	6735.00	5212.43	-2036.39	-4912.08	40.4944220	-104.5144927	0.00	
11930.00†	90.000	269.230	6735.00	5310.80	-2037.73	-5012.07	40.4944213	-104.5148522	0.00	
12030.00†	90.000	269.230	6735.00	5409.18	-2039.07	-5112.06	40.4944207	-104.5152117	0.00	
12130.00†	90.000	269.230	6735.00	5507.56	-2040.42	-5212.05	40.4944200	-104.5155713	0.00	
12230.00†	90.000	269.230	6735.00	5605.93	-2041.76	-5312.05	40.4944194	-104.5159308	0.00	
12330.00†	90.000	269.230	6735.00	5704.31	-2043.11	-5412.04	40.4944188	-104.5162904	0.00	
12430.00†	90.000	269.230	6735.00	5802.68	-2044.45	-5512.03	40.4944181	-104.5166499	0.00	
12530.00†	90.000	269.230	6735.00	5901.06	-2045.80	-5612.02	40.4944175	-104.5170094	0.00	
12630.00†	90.000	269.230	6735.00	5999.44	-2047.14	-5712.01	40.4944168	-104.5173690	0.00	
12730.00†	90.000	269.230	6735.00	6097.81	-2048.48	-5812.00	40.4944162	-104.5177285	0.00	
12830.00†	90.000	269.230	6735.00	6196.19	-2049.83	-5911.99	40.4944155	-104.5180881	0.00	
12930.00†	90.000	269.230	6735.00	6294.56	-2051.17	-6011.98	40.4944149	-104.5184476	0.00	



Planned Wellpath Report

GABEL A10-615 (REV-A.0) PWP
Page 5 of 7



REFERENCE WELLPATH IDENTIFICATION			
Operator	NOBLE ENERGY, INC	Well	GABEL A10-615
Field	WELD COUNTY (NOBLE NAD 83 GRID)	API/Legal	
Facility	SEC.12-T06N-R64W	Wellbore	GABEL A10-615 PWB
Slot	SLOT#16 GABEL A10-615 (2290'FSL & 2210'FEL,SEC.12)		

WELLPATH DATA (183 stations) † = interpolated, ‡ = extrapolated station										
MD [ft]	Inclination [°]	Azimuth [°]	TVD [ft]	Vert Sect [ft]	North [ft]	East [ft]	Latitude	Longitude	DLS [°/100ft]	Comments
13030.00†	90.000	269.230	6735.00	6392.94	-2052.52	-6111.97	40.4944142	-104.5188071	0.00	
13130.00†	90.000	269.230	6735.00	6491.32	-2053.86	-6211.96	40.4944136	-104.5191667	0.00	
13230.00†	90.000	269.230	6735.00	6589.69	-2055.21	-6311.96	40.4944129	-104.5195262	0.00	
13330.00†	90.000	269.230	6735.00	6688.07	-2056.55	-6411.95	40.4944122	-104.5198858	0.00	
13430.00†	90.000	269.230	6735.00	6786.44	-2057.89	-6511.94	40.4944116	-104.5202453	0.00	
13530.00†	90.000	269.230	6735.00	6884.82	-2059.24	-6611.93	40.4944109	-104.5206048	0.00	
13630.00†	90.000	269.230	6735.00	6983.20	-2060.58	-6711.92	40.4944103	-104.5209644	0.00	
13730.00†	90.000	269.230	6735.00	7081.57	-2061.93	-6811.91	40.4944096	-104.5213239	0.00	
13830.00†	90.000	269.230	6735.00	7179.95	-2063.27	-6911.90	40.4944090	-104.5216835	0.00	
13930.00†	90.000	269.230	6735.00	7278.32	-2064.61	-7011.89	40.4944083	-104.5220430	0.00	
14030.00†	90.000	269.230	6735.00	7376.70	-2065.96	-7111.88	40.4944076	-104.5224025	0.00	
14130.00†	90.000	269.230	6735.00	7475.08	-2067.30	-7211.87	40.4944070	-104.5227621	0.00	
14230.00†	90.000	269.230	6735.00	7573.45	-2068.65	-7311.87	40.4944063	-104.5231216	0.00	
14330.00†	90.000	269.230	6735.00	7671.83	-2069.99	-7411.86	40.4944056	-104.5234812	0.00	
14430.00†	90.000	269.230	6735.00	7770.20	-2071.34	-7511.85	40.4944050	-104.5238407	0.00	
14530.00†	90.000	269.230	6735.00	7868.58	-2072.68	-7611.84	40.4944043	-104.5242002	0.00	
14630.00†	90.000	269.230	6735.00	7966.96	-2074.02	-7711.83	40.4944036	-104.5245598	0.00	
14730.00†	90.000	269.230	6735.00	8065.33	-2075.37	-7811.82	40.4944030	-104.5249193	0.00	
14830.00†	90.000	269.230	6735.00	8163.71	-2076.71	-7911.81	40.4944023	-104.5252789	0.00	
14930.00†	90.000	269.230	6735.00	8262.08	-2078.06	-8011.80	40.4944016	-104.5256384	0.00	
15030.00†	90.000	269.230	6735.00	8360.46	-2079.40	-8111.79	40.4944009	-104.5259979	0.00	
15130.00†	90.000	269.230	6735.00	8458.84	-2080.74	-8211.78	40.4944003	-104.5263575	0.00	
15230.00†	90.000	269.230	6735.00	8557.21	-2082.09	-8311.77	40.4943996	-104.5267170	0.00	
15330.00†	90.000	269.230	6735.00	8655.59	-2083.43	-8411.77	40.4943989	-104.5270766	0.00	
15430.00†	90.000	269.230	6735.00	8753.96	-2084.78	-8511.76	40.4943982	-104.5274361	0.00	
15530.00†	90.000	269.230	6735.00	8852.34	-2086.12	-8611.75	40.4943975	-104.5277956	0.00	
15630.00†	90.000	269.230	6735.00	8950.72	-2087.47	-8711.74	40.4943969	-104.5281552	0.00	
15730.00†	90.000	269.230	6735.00	9049.09	-2088.81	-8811.73	40.4943962	-104.5285147	0.00	
15830.00†	90.000	269.230	6735.00	9147.47	-2090.15	-8911.72	40.4943955	-104.5288743	0.00	
15930.00†	90.000	269.230	6735.00	9245.84	-2091.50	-9011.71	40.4943948	-104.5292338	0.00	
16030.00†	90.000	269.230	6735.00	9344.22	-2092.84	-9111.70	40.4943941	-104.5295933	0.00	
16130.00†	90.000	269.230	6735.00	9442.59	-2094.19	-9211.69	40.4943934	-104.5299529	0.00	
16230.00†	90.000	269.230	6735.00	9540.97	-2095.53	-9311.68	40.4943928	-104.5303124	0.00	
16330.00†	90.000	269.230	6735.00	9639.35	-2096.88	-9411.68	40.4943921	-104.5306719	0.00	
16430.00†	90.000	269.230	6735.00	9737.72	-2098.22	-9511.67	40.4943914	-104.5310315	0.00	
16530.00†	90.000	269.230	6735.00	9836.10	-2099.56	-9611.66	40.4943907	-104.5313910	0.00	
16630.00†	90.000	269.230	6735.00	9934.47	-2100.91	-9711.65	40.4943900	-104.5317506	0.00	
16730.00†	90.000	269.230	6735.00	10032.85	-2102.25	-9811.64	40.4943893	-104.5321101	0.00	
16830.00†	90.000	269.230	6735.00	10131.23	-2103.60	-9911.63	40.4943886	-104.5324696	0.00	
16930.00†	90.000	269.230	6735.00	10229.60	-2104.94	-10011.62	40.4943879	-104.5328292	0.00	
17030.00†	90.000	269.230	6735.00	10327.98	-2106.28	-10111.61	40.4943872	-104.5331887	0.00	
17130.00†	90.000	269.230	6735.00	10426.35	-2107.63	-10211.60	40.4943865	-104.5335483	0.00	
17230.00†	90.000	269.230	6735.00	10524.73	-2108.97	-10311.59	40.4943858	-104.5339078	0.00	
17330.00†	90.000	269.230	6735.00	10623.11	-2110.32	-10411.59	40.4943851	-104.5342673	0.00	
17430.00†	90.000	269.230	6735.00	10721.48	-2111.66	-10511.58	40.4943844	-104.5346269	0.00	

REFERENCE WELLPATH IDENTIFICATION			
Operator	NOBLE ENERGY, INC	Well	GABEL A10-615
Field	WELD COUNTY (NOBLE NAD 83 GRID)	API/Legal	
Facility	SEC.12-T06N-R64W	Wellbore	GABEL A10-615 PWB
Slot	SLOT#16 GABEL A10-615 (2290'FSL & 2210'FEL,SEC.12)		

WELLPATH DATA (183 stations) † = interpolated, ‡ = extrapolated station										
MD [ft]	Inclination [°]	Azimuth [°]	TVD [ft]	Vert Sect [ft]	North [ft]	East [ft]	Latitude	Longitude	DLS [°/100ft]	Comments
17530.00†	90.000	269.230	6735.00	10819.86	-2113.01	-10611.57	40.4943837	-104.5349864	0.00	
17630.00†	90.000	269.230	6735.00	10918.23	-2114.35	-10711.56	40.4943830	-104.5353460	0.00	
17689.16	90.000	269.230	6735.00 [‡]	10976.43	-2115.15	-10770.71	40.4943826	-104.5355587	0.00	BHL

HOLE & CASING SECTIONS - Ref Wellbore: GABEL A10-615 PWB Ref Wellpath: GABEL A10-615 (REV-A.0) PWP									
String/Diameter	Start MD [ft]	End MD [ft]	Interval [ft]	Start TVD [ft]	End TVD [ft]	Start N/S [ft]	Start E/W [ft]	End N/S [ft]	End E/W [ft]
9.625in Casing Surface	30.00	1950.00	1920.00	30.00	1950.00	0.00	0.00	0.00	0.00

TARGETS									
Name	MD [ft]	TVD [ft]	North [ft]	East [ft]	Grid East [US ft]	Grid North [US ft]	Latitude	Longitude	Shape
OGPD 2 SEC. 10-T06N-R64W	N/A	-8.00	2688.00	-74.91	3278923.07	1429205.68	40.5072400	-104.4969100	polygon
	2D Polygon: dimensions not calculated								
OGPD 2 SEC. 11-T06N-R64W	N/A	-8.00	2688.00	-74.91	3278923.07	1429205.68	40.5072400	-104.4969100	polygon
	2D Polygon: dimensions not calculated								
OGPD 2 SEC.12-T06N-R64W	N/A	-8.00	2688.00	-74.91	3278923.07	1429205.68	40.5072400	-104.4969100	polygon
	2D Polygon: dimensions not calculated								
2) GABEL A10-615 BHL Rev-1 (353'FSL & 2437'FEL,SEC.10)	17689.16	6735.00	-2115.15	-10770.71	3268227.65	1424402.71	40.4943826	-104.5355587	point
1) GABEL A10-615 LP Rev-1 (321'FSL & 2445'FWL,SEC.12)	7532.07	6735.00	-1978.61	-614.54	3278383.46	1424539.23	40.4944484	-104.4990399	point

SURVEY PROGRAM - Ref Wellbore: GABEL A10-615 PWB Ref Wellpath: GABEL A10-615 (REV-A.0) PWP				
Start MD [ft]	End MD [ft]	Positional Uncertainty Model	Log Name/Comment	Wellbore
30.00	17689.16	OWSG MWD rev2 (MS+IFR1)		GABEL A10-615 PWB



Planned Wellpath Report

GABEL A10-615 (REV-A.0) PWP
Page 7 of 7



REFERENCE WELLPATH IDENTIFICATION			
Operator	NOBLE ENERGY, INC	Well	GABEL A10-615
Field	WELD COUNTY (NOBLE NAD 83 GRID)	API/Legal	
Facility	SEC.12-T06N-R64W	Wellbore	GABEL A10-615 PWB
Slot	SLOT#16 GABEL A10-615 (2290'FSL & 2210'FEL,SEC.12)		

DESIGN COMMENTS				
MD [ft]	Inclination [°]	Azimuth [°]	TVD [ft]	Comment
30.00	0.000	179.381	30.00	SHL
2050.00	0.000	179.381	2050.00	End of Tangent
3355.22	26.104	179.381	3310.53	Build (XS)
6532.80	26.104	179.381	6163.98	KOP
7532.07	90.000	269.230	6735.00	LP/TPZ
17689.16	90.000	269.230	6735.00	BHL