

# NOBLE ENERGY, INC

Location: COLORADO Slot: SLOT#15 GABEL A10-625 (2312°FSL & 2210°FEL, SEC.12)

Field: WELD COUNTY (NOBLE NAD 83 GRID) Well: GABEL A10-625

Facility: SEC.12-T06N-R64W Wellbore: GABEL A10-625 PWB

**Plot reference wellpath is GABEL A10-625 (REV-A.0) PWP**

Grid System: NAD83 / Lambert Colorado SP, Northern Zone (501), US feet

True vertical depths are referenced to (4716'GL+30KB@4746'RKB) (RKB) North Reference: Grid north

Reference wellpath measured depths are referenced to (4716'GL+30KB@4746'RKB) (RKB) Scale: True distance

(4716'GL+30KB@4746'RKB) (RKB) to Mean Sea Level: 4746 feet Coordinates are in feet referenced to Slot

Mean Sea Level to Ground level (At Slot: SLOT#15 GABEL A10-625 (2312°FSL & 2210°FEL, SEC.12)): 0 feet Depths are in feet

Offset wellpath MDs are referenced to each path's default MD datum Created by: guenaler on 2023-01-20; Database: WellArchitectDB

### Location Information

Facility Name	Grid East (US ft)	Grid North (US ft)	Latitude	Longitude		
SEC.12-T06N-R64W	3278923.071	1429205.676	40°30'26.0640"N	104°29'48.8760"W		
Slot	Local N (ft)	Local E (ft)	Grid East (US ft)	Grid North (US ft)	Latitude	Longitude
SLOT#15 GABEL A10-625 (2312°FSL & 2210°FEL, SEC.12)	-2666.14	74.66	3278997.729	1426539.632	40°29'59.7120"N	104°29'48.3000"W
(4716'GL+30KB@4746'RKB) (RKB) to Ground level (At Slot: SLOT#15 GABEL A10-625 (2312°FSL & 2210°FEL, SEC.12))					-4746ft	
Mean Sea Level to Ground level (At Slot: SLOT#15 GABEL A10-625 (2312°FSL & 2210°FEL, SEC.12))					0ft	
(4716'GL+30KB@4746'RKB) (RKB) to Mean Sea Level					-4746ft	

### Well Profile Data

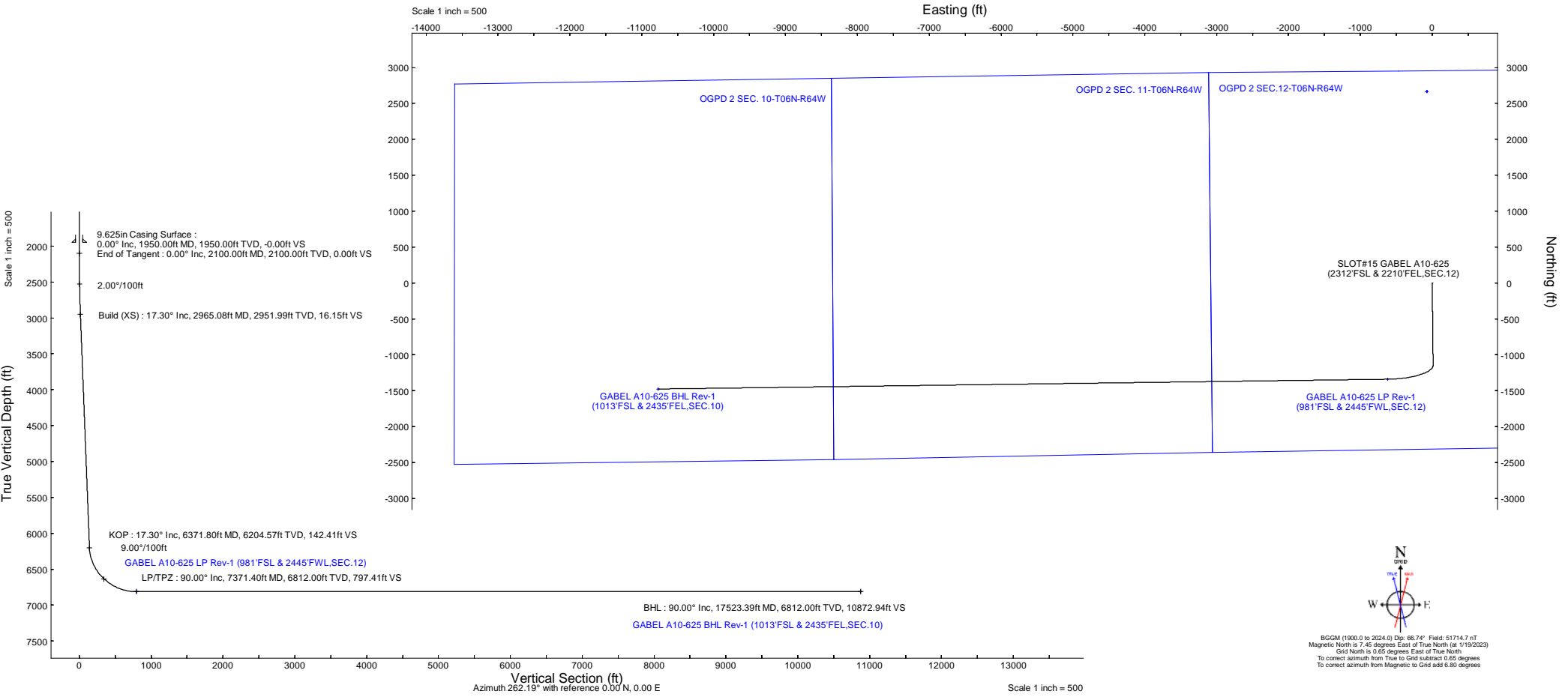
Design Comment	MD (ft)	Inc (°)	Az (°)	TVD (ft)	Local N (ft)	Local E (ft)	DLS (°/100ft)	VS (ft)
SHL	30.00	0.000	179.351	30.00	0.00	0.00	0.00	0.00
End of Tangent	2100.00	0.000	179.351	2100.00	0.00	0.00	0.00	0.00
Build (XS)	2965.08	17.302	179.351	2951.99	-129.62	1.47	2.00	16.15
KOP	6371.80	17.302	179.351	6204.57	-1142.72	12.94	0.00	142.41
LP/TPZ	7371.40	90.000	269.230	6812.00	-1340.47	-621.08	9.00	797.41
BHL	17523.39	90.000	269.230	6812.00	-1476.94	-10772.16	0.00	10872.94

### Targets

Name	MD (ft)	TVD (ft)	Local N (ft)	Local E (ft)	Grid East (US ft)	Grid North (US ft)	Latitude	Longitude
OGPD 2 SEC. 10-T06N-R64W	N/A	-8.00	2666.14	-74.66	3278923.07	1429205.68	40°30'26.0640"N	104°29'48.8760"W
OGPD 2 SEC. 11-T06N-R64W	N/A	-8.00	2666.14	-74.66	3278923.07	1429205.68	40°30'26.0640"N	104°29'48.8760"W
OGPD 2 SEC. 12-T06N-R64W	N/A	-8.00	2666.14	-74.66	3278923.07	1429205.68	40°30'26.0640"N	104°29'48.8760"W
GABEL A10-625 BHL Rev1 (1013°FSL & 2435°FEL, SEC.10)	17523.39	6812.00	-1476.94	-10772.16	3268225.96	1425062.74	40°29'46.2995"N	104°32'7.9402"W
GABEL A10-625 LP Rev1 (981°FSL & 2445°FEL, SEC.12)	7371.40	6812.00	-1340.47	-621.08	3278376.67	1425199.21	40°29'46.5364"N	104°29'56.5360"W

### Survey Program

Start MD (ft)	End MD (ft)	Tool	Model	Log Name/Comment	Wellbore
30.00	17523.39	OWSG MWD rev2	OWSG MWD rev2 (MS+IFR1)		GABEL A10-625 PWB





# Planned Wellpath Report

GABEL A10-625 (REV-A.0) PWP

Page 1 of 7



## REFERENCE WELLPATH IDENTIFICATION

Operator	NOBLE ENERGY, INC	Well	GABEL A10-625
Field	WELD COUNTY (NOBLE NAD 83 GRID)	API/Legal	
Facility	SEC.12-T06N-R64W	Wellbore	GABEL A10-625 PWB
Slot	SLOT#15 GABEL A10-625 (2312'FSL & 2210'FEL,SEC.12)		

## REPORT SETUP INFORMATION

Projection System	NAD83 / Lambert Colorado SP, Northern Zone (501), US feet	Software System	WellArchitect® 6.0
North Reference	Grid	User	Guenaler
Scale	0.999966	Report Generated	1/20/2023 at 9:05:51 PM
Convergence at slot	0.65° East	Database	WellArchitectDB

## WELLPATH LOCATION

	Local coordinates		Grid coordinates		Geographic coordinates	
	North[ft]	East[ft]	Easting[US ft]	Northing[US ft]	Latitude	Longitude
Slot Location	-2666.14	74.66	3278997.73	1426539.63	40.4999200°	-104.4967500°
Facility Reference Pt			3278923.07	1429205.68	40.5072400°	-104.4969100°
Field Reference Pt			3000000.00	4454105.15	48.7761986°	-105.5000000°

## WELLPATH DATUM

Calculation method	Minimum curvature	(4716'GL+30'KB@4746'RKB) (RKB) to Facility Vertical Datum	4746.00ft
Horizontal Reference Pt	Slot	(4716'GL+30'KB@4746'RKB) (RKB) to Mean Sea Level	4746.00ft
Vertical Reference Pt	(4716'GL+30'KB@4746'RKB) (RKB)	(4716'GL+30'KB@4746'RKB) (RKB) to Ground Level at Slot (SLOT#15 GABEL A10-625 (2312'FSL & 2210'FEL,SEC.12))	4746.00ft
MD Reference Pt	(4716'GL+30'KB@4746'RKB) (RKB)	Section Origin	N 0.00, E 0.00 ft
Field Vertical Reference	Mean Sea Level	Section Azimuth	262.19°



# Planned Wellpath Report

GABEL A10-625 (REV-A.0) PWP  
Page 2 of 7



REFERENCE WELLPATH IDENTIFICATION			
Operator	NOBLE ENERGY, INC	Well	GABEL A10-625
Field	WELD COUNTY (NOBLE NAD 83 GRID)	API/Legal	
Facility	SEC.12-T06N-R64W	Wellbore	GABEL A10-625 PWB
Slot	SLOT#15 GABEL A10-625 (2312'FSL & 2210'FEL,SEC.12)		

WELLPATH DATA (181 stations) † = interpolated, ‡ = extrapolated station										
MD [ft]	Inclination [°]	Azimuth [°]	TVD [ft]	Vert Sect [ft]	North [ft]	East [ft]	Latitude	Longitude	DLS [°/100ft]	Comments
0.00†	0.000	179.351	0.00	0.00	0.00	0.00	40.4999200	-104.4967500	0.00	
30.00	0.000	179.351	30.00	0.00	0.00	0.00	40.4999200	-104.4967500	0.00	SHL
130.00†	0.000	179.351	130.00	0.00	0.00	0.00	40.4999200	-104.4967500	0.00	
230.00†	0.000	179.351	230.00	0.00	0.00	0.00	40.4999200	-104.4967500	0.00	
330.00†	0.000	179.351	330.00	0.00	0.00	0.00	40.4999200	-104.4967500	0.00	
430.00†	0.000	179.351	430.00	0.00	0.00	0.00	40.4999200	-104.4967500	0.00	
530.00†	0.000	179.351	530.00	0.00	0.00	0.00	40.4999200	-104.4967500	0.00	
630.00†	0.000	179.351	630.00	0.00	0.00	0.00	40.4999200	-104.4967500	0.00	
730.00†	0.000	179.351	730.00	0.00	0.00	0.00	40.4999200	-104.4967500	0.00	
830.00†	0.000	179.351	830.00	0.00	0.00	0.00	40.4999200	-104.4967500	0.00	
930.00†	0.000	179.351	930.00	0.00	0.00	0.00	40.4999200	-104.4967500	0.00	
1030.00†	0.000	179.351	1030.00	0.00	0.00	0.00	40.4999200	-104.4967500	0.00	
1130.00†	0.000	179.351	1130.00	0.00	0.00	0.00	40.4999200	-104.4967500	0.00	
1230.00†	0.000	179.351	1230.00	0.00	0.00	0.00	40.4999200	-104.4967500	0.00	
1330.00†	0.000	179.351	1330.00	0.00	0.00	0.00	40.4999200	-104.4967500	0.00	
1430.00†	0.000	179.351	1430.00	0.00	0.00	0.00	40.4999200	-104.4967500	0.00	
1530.00†	0.000	179.351	1530.00	0.00	0.00	0.00	40.4999200	-104.4967500	0.00	
1630.00†	0.000	179.351	1630.00	0.00	0.00	0.00	40.4999200	-104.4967500	0.00	
1730.00†	0.000	179.351	1730.00	0.00	0.00	0.00	40.4999200	-104.4967500	0.00	
1830.00†	0.000	179.351	1830.00	0.00	0.00	0.00	40.4999200	-104.4967500	0.00	
1930.00†	0.000	179.351	1930.00	0.00	0.00	0.00	40.4999200	-104.4967500	0.00	
2030.00†	0.000	179.351	2030.00	0.00	0.00	0.00	40.4999200	-104.4967500	0.00	
2100.00	0.000	179.351	2100.00	0.00	0.00	0.00	40.4999200	-104.4967500	0.00	End of Tangent
2130.00†	0.600	179.351	2130.00	0.02	-0.16	0.00	40.4999196	-104.4967500	2.00	
2230.00†	2.600	179.351	2229.96	0.37	-2.95	0.03	40.4999119	-104.4967500	2.00	
2330.00†	4.600	179.351	2329.75	1.15	-9.23	0.10	40.4998947	-104.4967500	2.00	
2430.00†	6.600	179.351	2429.27	2.37	-18.98	0.21	40.4998679	-104.4967500	2.00	
2530.00†	8.600	179.351	2528.39	4.01	-32.21	0.36	40.4998316	-104.4967500	2.00	
2630.00†	10.600	179.351	2626.98	6.09	-48.88	0.55	40.4997858	-104.4967500	2.00	
2730.00†	12.600	179.351	2724.93	8.60	-68.99	0.78	40.4997306	-104.4967500	2.00	
2830.00†	14.600	179.351	2822.13	11.53	-92.50	1.05	40.4996661	-104.4967500	2.00	
2930.00†	16.600	179.351	2918.44	14.88	-119.39	1.35	40.4995923	-104.4967500	2.00	
2965.08	17.302	179.351	2951.99	16.15	-129.62	1.47	40.4995642	-104.4967500	2.00	Build (XS)
3030.00†	17.302	179.351	3013.98	18.56	-148.92	1.69	40.4995112	-104.4967500	0.00	
3130.00†	17.302	179.351	3109.45	22.26	-178.66	2.02	40.4994296	-104.4967500	0.00	
3230.00†	17.302	179.351	3204.93	25.97	-208.40	2.36	40.4993479	-104.4967500	0.00	
3330.00†	17.302	179.351	3300.40	29.68	-238.14	2.70	40.4992663	-104.4967500	0.00	
3430.00†	17.302	179.351	3395.88	33.38	-267.88	3.03	40.4991847	-104.4967500	0.00	
3530.00†	17.302	179.351	3491.35	37.09	-297.61	3.37	40.4991030	-104.4967500	0.00	
3630.00†	17.302	179.351	3586.83	40.80	-327.35	3.71	40.4990214	-104.4967500	0.00	
3730.00†	17.302	179.351	3682.30	44.50	-357.09	4.04	40.4989398	-104.4967500	0.00	
3830.00†	17.302	179.351	3777.78	48.21	-386.83	4.38	40.4988581	-104.4967500	0.00	
3930.00†	17.302	179.351	3873.25	51.91	-416.57	4.72	40.4987765	-104.4967500	0.00	
4030.00†	17.302	179.351	3968.73	55.62	-446.31	5.05	40.4986949	-104.4967500	0.00	
4130.00†	17.302	179.351	4064.20	59.33	-476.04	5.39	40.4986132	-104.4967500	0.00	



# Planned Wellpath Report

GABEL A10-625 (REV-A.0) PWP  
Page 3 of 7



REFERENCE WELLPATH IDENTIFICATION			
Operator	NOBLE ENERGY, INC	Well	GABEL A10-625
Field	WELD COUNTY (NOBLE NAD 83 GRID)	API/Legal	
Facility	SEC.12-T06N-R64W	Wellbore	GABEL A10-625 PWB
Slot	SLOT#15 GABEL A10-625 (2312'FSL & 2210'FEL,SEC.12)		

WELLPATH DATA (181 stations) † = interpolated, ‡ = extrapolated station										
MD [ft]	Inclination [°]	Azimuth [°]	TVD [ft]	Vert Sect [ft]	North [ft]	East [ft]	Latitude	Longitude	DLS [°/100ft]	Comments
4230.00†	17.302	179.351	4159.68	63.03	-505.78	5.73	40.4985316	-104.4967500	0.00	
4330.00†	17.302	179.351	4255.15	66.74	-535.52	6.06	40.4984500	-104.4967500	0.00	
4430.00†	17.302	179.351	4350.63	70.44	-565.26	6.40	40.4983683	-104.4967500	0.00	
4530.00†	17.302	179.351	4446.10	74.15	-595.00	6.74	40.4982867	-104.4967500	0.00	
4630.00†	17.302	179.351	4541.58	77.86	-624.74	7.07	40.4982051	-104.4967500	0.00	
4730.00†	17.302	179.351	4637.05	81.56	-654.47	7.41	40.4981235	-104.4967500	0.00	
4830.00†	17.302	179.351	4732.53	85.27	-684.21	7.75	40.4980418	-104.4967500	0.00	
4930.00†	17.302	179.351	4828.00	88.97	-713.95	8.08	40.4979602	-104.4967500	0.00	
5030.00†	17.302	179.351	4923.48	92.68	-743.69	8.42	40.4978786	-104.4967500	0.00	
5130.00†	17.302	179.351	5018.95	96.39	-773.43	8.76	40.4977969	-104.4967500	0.00	
5230.00†	17.302	179.351	5114.43	100.09	-803.17	9.09	40.4977153	-104.4967500	0.00	
5330.00†	17.302	179.351	5209.91	103.80	-832.90	9.43	40.4976337	-104.4967500	0.00	
5430.00†	17.302	179.351	5305.38	107.50	-862.64	9.77	40.4975520	-104.4967500	0.00	
5530.00†	17.302	179.351	5400.86	111.21	-892.38	10.10	40.4974704	-104.4967500	0.00	
5630.00†	17.302	179.351	5496.33	114.92	-922.12	10.44	40.4973888	-104.4967500	0.00	
5730.00†	17.302	179.351	5591.81	118.62	-951.86	10.77	40.4973071	-104.4967500	0.00	
5830.00†	17.302	179.351	5687.28	122.33	-981.60	11.11	40.4972255	-104.4967500	0.00	
5930.00†	17.302	179.351	5782.76	126.03	-1011.33	11.45	40.4971439	-104.4967500	0.00	
6030.00†	17.302	179.351	5878.23	129.74	-1041.07	11.78	40.4970622	-104.4967500	0.00	
6130.00†	17.302	179.351	5973.71	133.45	-1070.81	12.12	40.4969806	-104.4967500	0.00	
6230.00†	17.302	179.351	6069.18	137.15	-1100.55	12.46	40.4968990	-104.4967500	0.00	
6330.00†	17.302	179.351	6164.66	140.86	-1130.29	12.79	40.4968173	-104.4967500	0.00	
6371.80	17.302	179.351	6204.57	142.41	-1142.72	12.94	40.4967832	-104.4967500	0.00	KOP
6430.00†	18.064	196.473	6260.05	147.20	-1160.04	10.47	40.4967357	-104.4967595	9.00	
6530.00†	22.290	219.775	6354.05	167.62	-1189.54	-6.09	40.4966553	-104.4968203	9.00	
6630.00†	28.710	234.569	6444.35	202.97	-1218.10	-37.86	40.4965779	-104.4969357	9.00	
6730.00†	36.172	244.013	6528.74	252.39	-1245.01	-84.05	40.4965055	-104.4971028	9.00	
6830.00†	44.147	250.511	6605.14	314.66	-1269.61	-143.53	40.4964398	-104.4973177	9.00	
6930.00†	52.396	255.348	6671.66	388.25	-1291.29	-214.83	40.4963825	-104.4975749	9.00	
7030.00†	60.803	259.205	6726.67	471.33	-1309.52	-296.20	40.4963350	-104.4978682	9.00	
7130.00†	69.303	262.471	6768.82	561.88	-1323.86	-385.63	40.4962984	-104.4981903	9.00	
7230.00†	77.859	265.387	6797.07	657.66	-1333.94	-480.92	40.4962737	-104.4985333	9.00	
7330.00†	86.443	268.120	6810.72	756.30	-1339.52	-579.72	40.4962614	-104.4988887	9.00	
7371.40	90.000	269.230	6812.00†	797.41	-1340.47	-621.08	40.4962601	-104.4990375	9.00	LP/TPZ
7430.00†	90.000	269.230	6812.00	855.57	-1341.26	-679.68	40.4962598	-104.4992482	0.00	
7530.00†	90.000	269.230	6812.00	954.82	-1342.60	-779.67	40.4962592	-104.4996077	0.00	
7630.00†	90.000	269.230	6812.00	1054.06	-1343.95	-879.66	40.4962586	-104.4999673	0.00	
7730.00†	90.000	269.230	6812.00	1153.31	-1345.29	-979.65	40.4962580	-104.5003268	0.00	
7830.00†	90.000	269.230	6812.00	1252.56	-1346.64	-1079.64	40.4962574	-104.5006864	0.00	
7930.00†	90.000	269.230	6812.00	1351.80	-1347.98	-1179.63	40.4962568	-104.5010459	0.00	
8030.00†	90.000	269.230	6812.00	1451.05	-1349.32	-1279.62	40.4962562	-104.5014055	0.00	
8130.00†	90.000	269.230	6812.00	1550.30	-1350.67	-1379.61	40.4962556	-104.5017650	0.00	
8230.00†	90.000	269.230	6812.00	1649.54	-1352.01	-1479.60	40.4962550	-104.5021246	0.00	
8330.00†	90.000	269.230	6812.00	1748.79	-1353.36	-1579.60	40.4962544	-104.5024841	0.00	
8430.00†	90.000	269.230	6812.00	1848.04	-1354.70	-1679.59	40.4962538	-104.5028437	0.00	



# Planned Wellpath Report

GABEL A10-625 (REV-A.0) PWP  
Page 4 of 7



REFERENCE WELLPATH IDENTIFICATION			
Operator	NOBLE ENERGY, INC	Well	GABEL A10-625
Field	WELD COUNTY (NOBLE NAD 83 GRID)	API/Legal	
Facility	SEC.12-T06N-R64W	Wellbore	GABEL A10-625 PWB
Slot	SLOT#15 GABEL A10-625 (2312'FSL & 2210'FEL,SEC.12)		

WELLPATH DATA (181 stations) † = interpolated, ‡ = extrapolated station										
MD [ft]	Inclination [°]	Azimuth [°]	TVD [ft]	Vert Sect [ft]	North [ft]	East [ft]	Latitude	Longitude	DLS [°/100ft]	Comments
8530.00†	90.000	269.230	6812.00	1947.28	-1356.05	-1779.58	40.4962532	-104.5032032	0.00	
8630.00†	90.000	269.230	6812.00	2046.53	-1357.39	-1879.57	40.4962526	-104.5035628	0.00	
8730.00†	90.000	269.230	6812.00	2145.78	-1358.73	-1979.56	40.4962520	-104.5039223	0.00	
8830.00†	90.000	269.230	6812.00	2245.02	-1360.08	-2079.55	40.4962514	-104.5042819	0.00	
8930.00†	90.000	269.230	6812.00	2344.27	-1361.42	-2179.54	40.4962507	-104.5046414	0.00	
9030.00†	90.000	269.230	6812.00	2443.52	-1362.77	-2279.53	40.4962501	-104.5050010	0.00	
9130.00†	90.000	269.230	6812.00	2542.76	-1364.11	-2379.52	40.4962495	-104.5053605	0.00	
9230.00†	90.000	269.230	6812.00	2642.01	-1365.46	-2479.51	40.4962489	-104.5057201	0.00	
9330.00†	90.000	269.230	6812.00	2741.26	-1366.80	-2579.50	40.4962483	-104.5060796	0.00	
9430.00†	90.000	269.230	6812.00	2840.50	-1368.14	-2679.50	40.4962477	-104.5064392	0.00	
9530.00†	90.000	269.230	6812.00	2939.75	-1369.49	-2779.49	40.4962471	-104.5067987	0.00	
9630.00†	90.000	269.230	6812.00	3039.00	-1370.83	-2879.48	40.4962465	-104.5071583	0.00	
9730.00†	90.000	269.230	6812.00	3138.24	-1372.18	-2979.47	40.4962458	-104.5075178	0.00	
9830.00†	90.000	269.230	6812.00	3237.49	-1373.52	-3079.46	40.4962452	-104.5078774	0.00	
9930.00†	90.000	269.230	6812.00	3336.74	-1374.87	-3179.45	40.4962446	-104.5082369	0.00	
10030.00†	90.000	269.230	6812.00	3435.99	-1376.21	-3279.44	40.4962440	-104.5085965	0.00	
10130.00†	90.000	269.230	6812.00	3535.23	-1377.55	-3379.43	40.4962434	-104.5089560	0.00	
10230.00†	90.000	269.230	6812.00	3634.48	-1378.90	-3479.42	40.4962427	-104.5093156	0.00	
10330.00†	90.000	269.230	6812.00	3733.73	-1380.24	-3579.41	40.4962421	-104.5096751	0.00	
10430.00†	90.000	269.230	6812.00	3832.97	-1381.59	-3679.41	40.4962415	-104.5100347	0.00	
10530.00†	90.000	269.230	6812.00	3932.22	-1382.93	-3779.40	40.4962409	-104.5103942	0.00	
10630.00†	90.000	269.230	6812.00	4031.47	-1384.28	-3879.39	40.4962402	-104.5107538	0.00	
10730.00†	90.000	269.230	6812.00	4130.71	-1385.62	-3979.38	40.4962396	-104.5111133	0.00	
10830.00†	90.000	269.230	6812.00	4229.96	-1386.96	-4079.37	40.4962390	-104.5114729	0.00	
10930.00†	90.000	269.230	6812.00	4329.21	-1388.31	-4179.36	40.4962383	-104.5118324	0.00	
11030.00†	90.000	269.230	6812.00	4428.45	-1389.65	-4279.35	40.4962377	-104.5121920	0.00	
11130.00†	90.000	269.230	6812.00	4527.70	-1391.00	-4379.34	40.4962371	-104.5125515	0.00	
11230.00†	90.000	269.230	6812.00	4626.95	-1392.34	-4479.33	40.4962364	-104.5129111	0.00	
11330.00†	90.000	269.230	6812.00	4726.19	-1393.69	-4579.32	40.4962358	-104.5132706	0.00	
11430.00†	90.000	269.230	6812.00	4825.44	-1395.03	-4679.32	40.4962352	-104.5136302	0.00	
11530.00†	90.000	269.230	6812.00	4924.69	-1396.37	-4779.31	40.4962345	-104.5139897	0.00	
11630.00†	90.000	269.230	6812.00	5023.93	-1397.72	-4879.30	40.4962339	-104.5143493	0.00	
11730.00†	90.000	269.230	6812.00	5123.18	-1399.06	-4979.29	40.4962333	-104.5147088	0.00	
11830.00†	90.000	269.230	6812.00	5222.43	-1400.41	-5079.28	40.4962326	-104.5150684	0.00	
11930.00†	90.000	269.230	6812.00	5321.67	-1401.75	-5179.27	40.4962320	-104.5154279	0.00	
12030.00†	90.000	269.230	6812.00	5420.92	-1403.10	-5279.26	40.4962313	-104.5157875	0.00	
12130.00†	90.000	269.230	6812.00	5520.17	-1404.44	-5379.25	40.4962307	-104.5161470	0.00	
12230.00†	90.000	269.230	6812.00	5619.41	-1405.78	-5479.24	40.4962300	-104.5165066	0.00	
12330.00†	90.000	269.230	6812.00	5718.66	-1407.13	-5579.23	40.4962294	-104.5168661	0.00	
12430.00†	90.000	269.230	6812.00	5817.91	-1408.47	-5679.22	40.4962288	-104.5172257	0.00	
12530.00†	90.000	269.230	6812.00	5917.15	-1409.82	-5779.22	40.4962281	-104.5175852	0.00	
12630.00†	90.000	269.230	6812.00	6016.40	-1411.16	-5879.21	40.4962275	-104.5179448	0.00	
12730.00†	90.000	269.230	6812.00	6115.65	-1412.51	-5979.20	40.4962268	-104.5183043	0.00	
12830.00†	90.000	269.230	6812.00	6214.89	-1413.85	-6079.19	40.4962262	-104.5186639	0.00	
12930.00†	90.000	269.230	6812.00	6314.14	-1415.19	-6179.18	40.4962255	-104.5190234	0.00	



# Planned Wellpath Report

GABEL A10-625 (REV-A.0) PWP

Page 5 of 7



## REFERENCE WELLPATH IDENTIFICATION

Operator	NOBLE ENERGY, INC	Well	GABEL A10-625
Field	WELD COUNTY (NOBLE NAD 83 GRID)	API/Legal	
Facility	SEC.12-T06N-R64W	Wellbore	GABEL A10-625 PWB
Slot	SLOT#15 GABEL A10-625 (2312'FSL & 2210'FEL,SEC.12)		

## WELLPATH DATA (181 stations) † = interpolated, ‡ = extrapolated station

MD [ft]	Inclination [°]	Azimuth [°]	TVD [ft]	Vert Sect [ft]	North [ft]	East [ft]	Latitude	Longitude	DLS [°/100ft]	Comments
13030.00†	90.000	269.230	6812.00	6413.39	-1416.54	-6279.17	40.4962248	-104.5193830	0.00	
13130.00†	90.000	269.230	6812.00	6512.64	-1417.88	-6379.16	40.4962242	-104.5197425	0.00	
13230.00†	90.000	269.230	6812.00	6611.88	-1419.23	-6479.15	40.4962235	-104.5201021	0.00	
13330.00†	90.000	269.230	6812.00	6711.13	-1420.57	-6579.14	40.4962229	-104.5204616	0.00	
13430.00†	90.000	269.230	6812.00	6810.38	-1421.92	-6679.13	40.4962222	-104.5208212	0.00	
13530.00†	90.000	269.230	6812.00	6909.62	-1423.26	-6779.13	40.4962216	-104.5211807	0.00	
13630.00†	90.000	269.230	6812.00	7008.87	-1424.60	-6879.12	40.4962209	-104.5215403	0.00	
13730.00†	90.000	269.230	6812.00	7108.12	-1425.95	-6979.11	40.4962202	-104.5218998	0.00	
13830.00†	90.000	269.230	6812.00	7207.36	-1427.29	-7079.10	40.4962196	-104.5222594	0.00	
13930.00†	90.000	269.230	6812.00	7306.61	-1428.64	-7179.09	40.4962189	-104.5226189	0.00	
14030.00†	90.000	269.230	6812.00	7405.86	-1429.98	-7279.08	40.4962182	-104.5229785	0.00	
14130.00†	90.000	269.230	6812.00	7505.10	-1431.33	-7379.07	40.4962176	-104.5233380	0.00	
14230.00†	90.000	269.230	6812.00	7604.35	-1432.67	-7479.06	40.4962169	-104.5236976	0.00	
14330.00†	90.000	269.230	6812.00	7703.60	-1434.02	-7579.05	40.4962162	-104.5240571	0.00	
14430.00†	90.000	269.230	6812.00	7802.84	-1435.36	-7679.04	40.4962156	-104.5244167	0.00	
14530.00†	90.000	269.230	6812.00	7902.09	-1436.70	-7779.03	40.4962149	-104.5247762	0.00	
14630.00†	90.000	269.230	6812.00	8001.34	-1438.05	-7879.03	40.4962142	-104.5251358	0.00	
14730.00†	90.000	269.230	6812.00	8100.58	-1439.39	-7979.02	40.4962136	-104.5254953	0.00	
14830.00†	90.000	269.230	6812.00	8199.83	-1440.74	-8079.01	40.4962129	-104.5258549	0.00	
14930.00†	90.000	269.230	6812.00	8299.08	-1442.08	-8179.00	40.4962122	-104.5262144	0.00	
15030.00†	90.000	269.230	6812.00	8398.32	-1443.43	-8278.99	40.4962115	-104.5265740	0.00	
15130.00†	90.000	269.230	6812.00	8497.57	-1444.77	-8378.98	40.4962109	-104.5269335	0.00	
15230.00†	90.000	269.230	6812.00	8596.82	-1446.11	-8478.97	40.4962102	-104.5272931	0.00	
15330.00†	90.000	269.230	6812.00	8696.06	-1447.46	-8578.96	40.4962095	-104.5276526	0.00	
15430.00†	90.000	269.230	6812.00	8795.31	-1448.80	-8678.95	40.4962088	-104.5280122	0.00	
15530.00†	90.000	269.230	6812.00	8894.56	-1450.15	-8778.94	40.4962081	-104.5283717	0.00	
15630.00†	90.000	269.230	6812.00	8993.80	-1451.49	-8878.94	40.4962075	-104.5287313	0.00	
15730.00†	90.000	269.230	6812.00	9093.05	-1452.84	-8978.93	40.4962068	-104.5290908	0.00	
15830.00†	90.000	269.230	6812.00	9192.30	-1454.18	-9078.92	40.4962061	-104.5294504	0.00	
15930.00†	90.000	269.230	6812.00	9291.54	-1455.52	-9178.91	40.4962054	-104.5298099	0.00	
16030.00†	90.000	269.230	6812.00	9390.79	-1456.87	-9278.90	40.4962047	-104.5301695	0.00	
16130.00†	90.000	269.230	6812.00	9490.04	-1458.21	-9378.89	40.4962040	-104.5305290	0.00	
16230.00†	90.000	269.230	6812.00	9589.29	-1459.56	-9478.88	40.4962033	-104.5308886	0.00	
16330.00†	90.000	269.230	6812.00	9688.53	-1460.90	-9578.87	40.4962026	-104.5312481	0.00	
16430.00†	90.000	269.230	6812.00	9787.78	-1462.25	-9678.86	40.4962019	-104.5316077	0.00	
16530.00†	90.000	269.230	6812.00	9887.03	-1463.59	-9778.85	40.4962013	-104.5319672	0.00	
16630.00†	90.000	269.230	6812.00	9986.27	-1464.93	-9878.85	40.4962006	-104.5323268	0.00	
16730.00†	90.000	269.230	6812.00	10085.52	-1466.28	-9978.84	40.4961999	-104.5326863	0.00	
16830.00†	90.000	269.230	6812.00	10184.77	-1467.62	-10078.83	40.4961992	-104.5330459	0.00	
16930.00†	90.000	269.230	6812.00	10284.01	-1468.97	-10178.82	40.4961985	-104.5334054	0.00	
17030.00†	90.000	269.230	6812.00	10383.26	-1470.31	-10278.81	40.4961978	-104.5337649	0.00	
17130.00†	90.000	269.230	6812.00	10482.51	-1471.66	-10378.80	40.4961971	-104.5341245	0.00	
17230.00†	90.000	269.230	6812.00	10581.75	-1473.00	-10478.79	40.4961964	-104.5344840	0.00	
17330.00†	90.000	269.230	6812.00	10681.00	-1474.34	-10578.78	40.4961957	-104.5348436	0.00	
17430.00†	90.000	269.230	6812.00	10780.25	-1475.69	-10678.77	40.4961950	-104.5352031	0.00	

## REFERENCE WELLPATH IDENTIFICATION

Operator	NOBLE ENERGY, INC	Well	GABEL A10-625
Field	WELD COUNTY (NOBLE NAD 83 GRID)	API/Legal	
Facility	SEC.12-T06N-R64W	Wellbore	GABEL A10-625 PWB
Slot	SLOT#15 GABEL A10-625 (2312'FSL & 2210'FEL,SEC.12)		

## WELLPATH DATA (181 stations)

MD [ft]	Inclination [°]	Azimuth [°]	TVD [ft]	Vert Sect [ft]	North [ft]	East [ft]	Latitude	Longitude	DLS [°/100ft]	Comments
17523.39	90.000	269.230	6812.00 <sup>2</sup>	10872.94	-1476.94	-10772.16	40.4961943	-104.5355389	0.00	BHL

## HOLE & CASING SECTIONS - Ref Wellbore: GABEL A10-625 PWB Ref Wellpath: GABEL A10-625 (REV-A.0) PWP

String/Diameter	Start MD [ft]	End MD [ft]	Interval [ft]	Start TVD [ft]	End TVD [ft]	Start N/S [ft]	Start E/W [ft]	End N/S [ft]	End E/W [ft]
9.625in Casing Surface	30.00	1950.00	1920.00	30.00	1950.00	0.00	0.00	0.00	0.00

## TARGETS

Name	MD [ft]	TVD [ft]	North [ft]	East [ft]	Grid East [US ft]	Grid North [US ft]	Latitude	Longitude	Shape
OGPD 2 SEC. 10-T06N-R64W	N/A	-8.00	2666.14	-74.66	3278923.07	1429205.68	40.5072400	-104.4969100	polygon
2D Polygon: dimensions not calculated									
OGPD 2 SEC. 11-T06N-R64W	N/A	-8.00	2666.14	-74.66	3278923.07	1429205.68	40.5072400	-104.4969100	polygon
2D Polygon: dimensions not calculated									
OGPD 2 SEC.12-T06N-R64W	N/A	-8.00	2666.14	-74.66	3278923.07	1429205.68	40.5072400	-104.4969100	polygon
2D Polygon: dimensions not calculated									
2) GABEL A10-625 BHL Rev-1 (1013'FSL & 2435'FEL,SEC.10)	17523.39	6812.00	-1476.94	-10772.16	3268225.96	1425062.74	40.4961943	-104.5355389	point
1) GABEL A10-625 LP Rev-1 (981'FSL & 2445'FWL,SEC.12)	7371.40	6812.00	-1340.47	-621.08	3278376.67	1425199.21	40.4962601	-104.4990375	point

## SURVEY PROGRAM - Ref Wellbore: GABEL A10-625 PWB Ref Wellpath: GABEL A10-625 (REV-A.0) PWP

Start MD [ft]	End MD [ft]	Positional Uncertainty Model	Log Name/Comment	Wellbore
30.00	17523.39	OWSG MWD rev2 (MS+IFR1)		GABEL A10-625 PWB



# Planned Wellpath Report

GABEL A10-625 (REV-A.0) PWP  
Page 7 of 7



REFERENCE WELLPATH IDENTIFICATION			
Operator	NOBLE ENERGY, INC	Well	GABEL A10-625
Field	WELD COUNTY (NOBLE NAD 83 GRID)	API/Legal	
Facility	SEC.12-T06N-R64W	Wellbore	GABEL A10-625 PWB
Slot	SLOT#15 GABEL A10-625 (2312'FSL & 2210'FEL, SEC.12)		

DESIGN COMMENTS				
MD [ft]	Inclination [°]	Azimuth [°]	TVD [ft]	Comment
30.00	0.000	179.351	30.00	SHL
2100.00	0.000	179.351	2100.00	End of Tangent
2965.08	17.302	179.351	2951.99	Build (XS)
6371.80	17.302	179.351	6204.57	KOP
7371.40	90.000	269.230	6812.00	LP/TPZ
17523.39	90.000	269.230	6812.00	BHL