

NOBLE ENERGY, INC

Location: COLORADO Slot: SLOT#14 GABEL A10-635 (2335'FSL & 2209'FEL,SEC.12)
 Field: WELD COUNTY (NOBLE NAD 83 GRID) Well: GABEL A10-635
 Facility: SEC.12-T06N-R64W Wellbore: GABEL A10-635 PWB

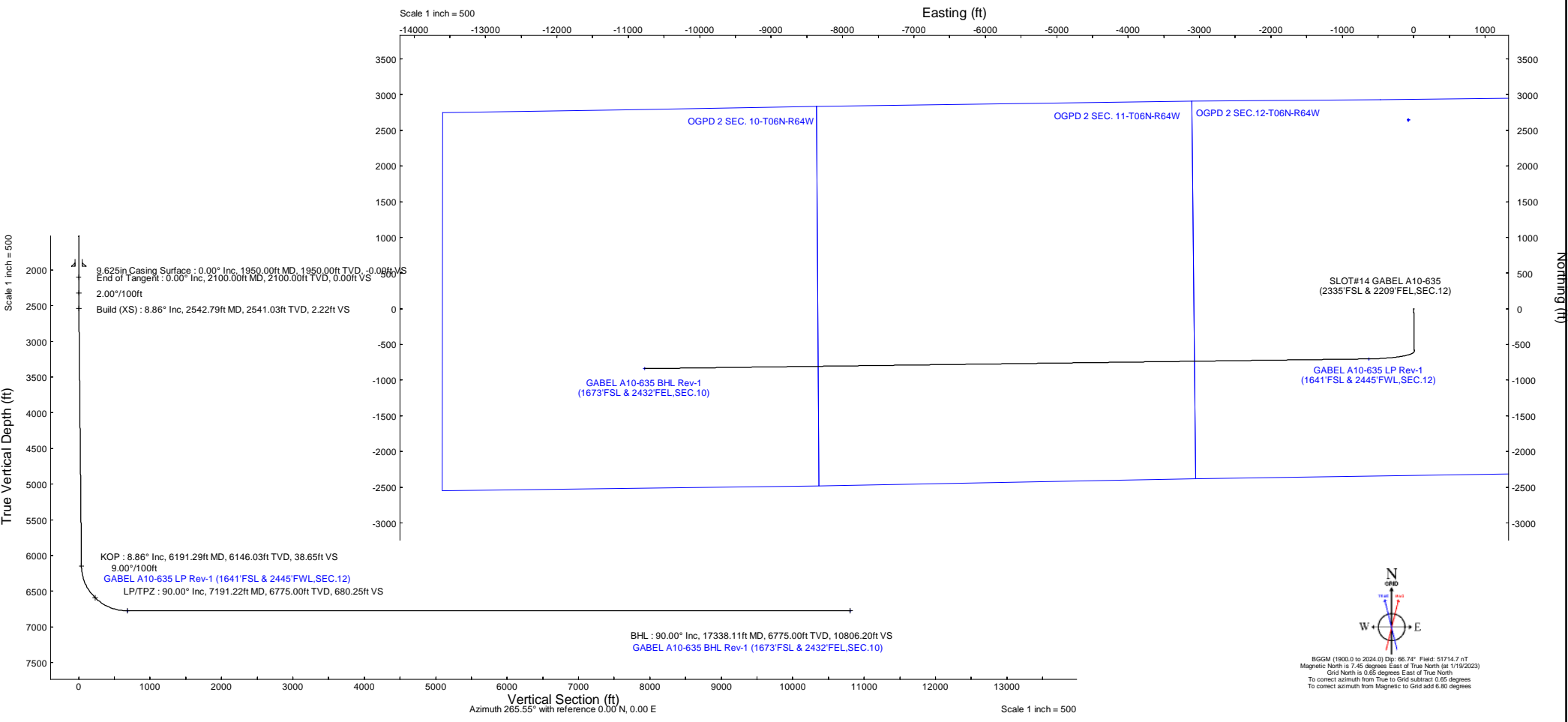
Plot reference wellpath is GABEL A10-635 (REV-A.0) PWP	Grid System: NAD83 / Lambert Colorado SP, Northern Zone (501), US feet
True vertical depths are referenced to (4716'GL+30'KB@4746'RKB) (RKB)	North Reference: Grid north
Reference wellpath measured depths are referenced to (4716'GL+30'KB@4746'RKB) (RKB)	Scale: True distance
(4716'GL+30'KB@4746'RKB) (RKB) to Mean Sea Level: 4746 feet	Coordinates are in feet referenced to Slot
Mean Sea Level to Ground level (At Slot: SLOT#14 GABEL A10-635 (2335'FSL & 2209'FEL,SEC.12)): 0 feet	Depths are in feet
Offset wellpath MDs are referenced to each path's default MD datum	Created by: guenaler on 2023-01-20; Database: WellArchitectDB

Location Information						
Facility Name		Grid East (US ft)	Grid North (US ft)	Latitude	Longitude	
SEC.12-T06N-R64W		3278923.071	1429205.676	40°30'26.0640"N	104°29'48.8760"W	
Slot	Local N (ft)	Local E (ft)	Grid East (US ft)	Grid North (US ft)	Latitude	Longitude
SLOT#14 GABEL A10-635 (2335'FSL & 2209'FEL,SEC.12)	-2644.28	74.41	3278997.482	1426561.489	40°29'59.9280"N	104°29'48.3000"W
(4716'GL+30'KB@4746'RKB) (RKB) to Ground level (At Slot: SLOT#14 GABEL A10-635 (2335'FSL & 2209'FEL,SEC.12))						4746ft
Mean Sea Level to Ground level (At Slot: SLOT#14 GABEL A10-635 (2335'FSL & 2209'FEL,SEC.12))						0ft
(4716'GL+30'KB@4746'RKB) (RKB) to Mean Sea Level						4746ft

Survey Program					
Start MD (ft)	End MD (ft)	Tool	Model	Log Name/Comment	Wellbore
30.00	17338.11	OWSG MWD rev2	OWSG MWD rev2 (MS+IFR1)		GABEL A10-635 PWB

Well Profile Data								
Design Comment	MD (ft)	Inc (°)	Az (°)	TVD (ft)	Local N (ft)	Local E (ft)	DLS (°/100ft)	VS (ft)
SHL	30.00	0.000	179.268	30.00	0.00	0.00	0.00	0.00
End of Tangent	2100.00	0.000	179.268	2100.00	0.00	0.00	0.00	0.00
Build (XS)	2542.79	8.856	179.268	2541.03	-34.15	0.44	2.00	2.22
KOP	6191.29	8.856	179.268	6146.03	-595.78	7.61	0.00	38.65
LP/TPZ	7191.22	90.000	269.230	6775.00	-702.33	-627.63	9.00	680.25
BHL	17338.11	90.000	269.230	6775.00	-838.74	-10773.60	0.00	10806.20

Targets								
Name	MD (ft)	TVD (ft)	Local N (ft)	Local E (ft)	Grid East (US ft)	Grid North (US ft)	Latitude	Longitude
OGPD 2 SEC. 10-T06N-R64W	N/A	-8.00	2644.28	-74.41	3278923.07	1429205.68	40°30'26.0640"N	104°29'48.8760"W
OGPD 2 SEC. 11-T06N-R64W	N/A	-8.00	2644.28	-74.41	3278923.07	1429205.68	40°30'26.0640"N	104°29'48.8760"W
OGPD 2 SEC. 12-T06N-R64W	N/A	-8.00	2644.28	-74.41	3278923.07	1429205.68	40°30'26.0640"N	104°29'48.8760"W
GABEL A10-635 BHL Rev-1 (1673'FSL & 2432'FEL,SEC.10)	17338.11	6775.00	-838.74	-10773.60	3268224.26	1425722.78	40°29'52.8217"N	104°32'7.8692"W
GABEL A10-635 LP Rev-1 (1641'FSL & 2445'FWL,SEC.12)	7191.22	6775.00	-702.33	-627.63	3278369.87	1425856.18	40°29'53.0585"N	104°29'56.5265"W





Planned Wellpath Report

GABEL A10-635 (REV-A.0) PWP

Page 1 of 7



REFERENCE WELLPATH IDENTIFICATION

Operator	NOBLE ENERGY, INC	Well	GABEL A10-635
Field	WELD COUNTY (NOBLE NAD 83 GRID)	API/Legal	
Facility	SEC.12-T06N-R64W	Wellbore	GABEL A10-635 PWB
Slot	SLOT#14 GABEL A10-635 (2335'FSL & 2209'FEL, SEC.12)		

REPORT SETUP INFORMATION

Projection System	NAD83 / Lambert Colorado SP, Northern Zone (501), US feet	Software System	WellArchitect® 6.0
North Reference	Grid	User	Guenaler
Scale	0.999966	Report Generated	1/20/2023 at 9:04:00 PM
Convergence at slot	0.65° East	Database	WellArchitectDB

WELLPATH LOCATION

	Local coordinates		Grid coordinates		Geographic coordinates	
	North[ft]	East[ft]	Easting[US ft]	Northing[US ft]	Latitude	Longitude
Slot Location	-2644.28	74.41	3278997.48	1426561.49	40.4999800°	-104.4967500°
Facility Reference Pt			3278923.07	1429205.68	40.5072400°	-104.4969100°
Field Reference Pt			3000000.00	4454105.15	48.7761986°	-105.5000000°

WELLPATH DATUM

Calculation method	Minimum curvature	(4716'GL+30'KB@4746'RKB) (RKB) to Facility Vertical Datum	4746.00ft
Horizontal Reference Pt	Slot	(4716'GL+30'KB@4746'RKB) (RKB) to Mean Sea Level	4746.00ft
Vertical Reference Pt	(4716'GL+30'KB@4746'RKB) (RKB)	(4716'GL+30'KB@4746'RKB) (RKB) to Ground Level at Slot (SLOT#14 GABEL A10-635 (2335'FSL & 2209'FEL, SEC.12))	4746.00ft
MD Reference Pt	(4716'GL+30'KB@4746'RKB) (RKB)	Section Origin	N 0.00, E 0.00 ft
Field Vertical Reference	Mean Sea Level	Section Azimuth	265.55°



Planned Wellpath Report

GABEL A10-635 (REV-A.0) PWP

Page 2 of 7



REFERENCE WELLPATH IDENTIFICATION

Operator	NOBLE ENERGY, INC	Well	GABEL A10-635
Field	WELD COUNTY (NOBLE NAD 83 GRID)	API/Legal	
Facility	SEC.12-T06N-R64W	Wellbore	GABEL A10-635 PWB
Slot	SLOT#14 GABEL A10-635 (2335'FSL & 2209'FEL,SEC.12)		

WELLPATH DATA (180 stations) † = interpolated, ‡ = extrapolated station

MD [ft]	Inclination [°]	Azimuth [°]	TVD [ft]	Vert Sect [ft]	North [ft]	East [ft]	Latitude	Longitude	DLS [°/100ft]	Comments
0.00†	0.000	179.268	0.00	0.00	0.00	0.00	40.4999800	-104.4967500	0.00	
30.00	0.000	179.268	30.00	0.00	0.00	0.00	40.4999800	-104.4967500	0.00	SHL
130.00†	0.000	179.268	130.00	0.00	0.00	0.00	40.4999800	-104.4967500	0.00	
230.00†	0.000	179.268	230.00	0.00	0.00	0.00	40.4999800	-104.4967500	0.00	
330.00†	0.000	179.268	330.00	0.00	0.00	0.00	40.4999800	-104.4967500	0.00	
430.00†	0.000	179.268	430.00	0.00	0.00	0.00	40.4999800	-104.4967500	0.00	
530.00†	0.000	179.268	530.00	0.00	0.00	0.00	40.4999800	-104.4967500	0.00	
630.00†	0.000	179.268	630.00	0.00	0.00	0.00	40.4999800	-104.4967500	0.00	
730.00†	0.000	179.268	730.00	0.00	0.00	0.00	40.4999800	-104.4967500	0.00	
830.00†	0.000	179.268	830.00	0.00	0.00	0.00	40.4999800	-104.4967500	0.00	
930.00†	0.000	179.268	930.00	0.00	0.00	0.00	40.4999800	-104.4967500	0.00	
1030.00†	0.000	179.268	1030.00	0.00	0.00	0.00	40.4999800	-104.4967500	0.00	
1130.00†	0.000	179.268	1130.00	0.00	0.00	0.00	40.4999800	-104.4967500	0.00	
1230.00†	0.000	179.268	1230.00	0.00	0.00	0.00	40.4999800	-104.4967500	0.00	
1330.00†	0.000	179.268	1330.00	0.00	0.00	0.00	40.4999800	-104.4967500	0.00	
1430.00†	0.000	179.268	1430.00	0.00	0.00	0.00	40.4999800	-104.4967500	0.00	
1530.00†	0.000	179.268	1530.00	0.00	0.00	0.00	40.4999800	-104.4967500	0.00	
1630.00†	0.000	179.268	1630.00	0.00	0.00	0.00	40.4999800	-104.4967500	0.00	
1730.00†	0.000	179.268	1730.00	0.00	0.00	0.00	40.4999800	-104.4967500	0.00	
1830.00†	0.000	179.268	1830.00	0.00	0.00	0.00	40.4999800	-104.4967500	0.00	
1930.00†	0.000	179.268	1930.00	0.00	0.00	0.00	40.4999800	-104.4967500	0.00	
2030.00†	0.000	179.268	2030.00	0.00	0.00	0.00	40.4999800	-104.4967500	0.00	
2100.00	0.000	179.268	2100.00	0.00	0.00	0.00	40.4999800	-104.4967500	0.00	End of Tangent
2130.00†	0.600	179.268	2130.00	0.01	-0.16	0.00	40.4999796	-104.4967500	2.00	
2230.00†	2.600	179.268	2229.96	0.19	-2.95	0.04	40.4999719	-104.4967500	2.00	
2330.00†	4.600	179.268	2329.75	0.60	-9.23	0.12	40.4999547	-104.4967500	2.00	
2430.00†	6.600	179.268	2429.27	1.23	-18.98	0.24	40.4999279	-104.4967499	2.00	
2530.00†	8.600	179.268	2528.39	2.09	-32.21	0.41	40.4998916	-104.4967498	2.00	
2542.79	8.856	179.268	2541.03	2.22	-34.15	0.44	40.4998863	-104.4967498	2.00	Build (XS)
2630.00†	8.856	179.268	2627.20	3.09	-47.57	0.61	40.4998494	-104.4967497	0.00	
2730.00†	8.856	179.268	2726.01	4.08	-62.97	0.80	40.4998072	-104.4967497	0.00	
2830.00†	8.856	179.268	2824.82	5.08	-78.36	1.00	40.4997649	-104.4967496	0.00	
2930.00†	8.856	179.268	2923.62	6.08	-93.75	1.20	40.4997226	-104.4967495	0.00	
3030.00†	8.856	179.268	3022.43	7.08	-109.15	1.40	40.4996804	-104.4967494	0.00	
3130.00†	8.856	179.268	3121.24	8.08	-124.54	1.59	40.4996381	-104.4967493	0.00	
3230.00†	8.856	179.268	3220.05	9.08	-139.94	1.79	40.4995959	-104.4967493	0.00	
3330.00†	8.856	179.268	3318.85	10.08	-155.33	1.99	40.4995536	-104.4967492	0.00	
3430.00†	8.856	179.268	3417.66	11.08	-170.72	2.18	40.4995114	-104.4967491	0.00	
3530.00†	8.856	179.268	3516.47	12.07	-186.12	2.38	40.4994691	-104.4967490	0.00	
3630.00†	8.856	179.268	3615.28	13.07	-201.51	2.58	40.4994268	-104.4967489	0.00	
3730.00†	8.856	179.268	3714.09	14.07	-216.90	2.77	40.4993846	-104.4967489	0.00	
3830.00†	8.856	179.268	3812.89	15.07	-232.30	2.97	40.4993423	-104.4967488	0.00	
3930.00†	8.856	179.268	3911.70	16.07	-247.69	3.17	40.4993001	-104.4967487	0.00	
4030.00†	8.856	179.268	4010.51	17.07	-263.08	3.36	40.4992578	-104.4967486	0.00	
4130.00†	8.856	179.268	4109.32	18.07	-278.48	3.56	40.4992156	-104.4967485	0.00	



Planned Wellpath Report

GABEL A10-635 (REV-A.0) PWP

Page 3 of 7



REFERENCE WELLPATH IDENTIFICATION

Operator	NOBLE ENERGY, INC	Well	GABEL A10-635
Field	WELD COUNTY (NOBLE NAD 83 GRID)	API/Legal	
Facility	SEC.12-T06N-R64W	Wellbore	GABEL A10-635 PWB
Slot	SLOT#14 GABEL A10-635 (2335'FSL & 2209'FEL,SEC.12)		

WELLPATH DATA (180 stations) † = interpolated, ‡ = extrapolated station

MD [ft]	Inclination [°]	Azimuth [°]	TVD [ft]	Vert Sect [ft]	North [ft]	East [ft]	Latitude	Longitude	DLS [°/100ft]	Comments
4230.00†	8.856	179.268	4208.13	19.06	-293.87	3.76	40.4991733	-104.4967485	0.00	
4330.00†	8.856	179.268	4306.93	20.06	-309.26	3.95	40.4991310	-104.4967484	0.00	
4430.00†	8.856	179.268	4405.74	21.06	-324.66	4.15	40.4990888	-104.4967483	0.00	
4530.00†	8.856	179.268	4504.55	22.06	-340.05	4.35	40.4990465	-104.4967482	0.00	
4630.00†	8.856	179.268	4603.36	23.06	-355.45	4.54	40.4990043	-104.4967481	0.00	
4730.00†	8.856	179.268	4702.17	24.06	-370.84	4.74	40.4989620	-104.4967480	0.00	
4830.00†	8.856	179.268	4800.97	25.06	-386.23	4.94	40.4989198	-104.4967480	0.00	
4930.00†	8.856	179.268	4899.78	26.06	-401.63	5.13	40.4988775	-104.4967479	0.00	
5030.00†	8.856	179.268	4998.59	27.05	-417.02	5.33	40.4988352	-104.4967478	0.00	
5130.00†	8.856	179.268	5097.40	28.05	-432.41	5.53	40.4987930	-104.4967477	0.00	
5230.00†	8.856	179.268	5196.20	29.05	-447.81	5.72	40.4987507	-104.4967476	0.00	
5330.00†	8.856	179.268	5295.01	30.05	-463.20	5.92	40.4987085	-104.4967476	0.00	
5430.00†	8.856	179.268	5393.82	31.05	-478.59	6.12	40.4986662	-104.4967475	0.00	
5530.00†	8.856	179.268	5492.63	32.05	-493.99	6.31	40.4986240	-104.4967474	0.00	
5630.00†	8.856	179.268	5591.44	33.05	-509.38	6.51	40.4985817	-104.4967473	0.00	
5730.00†	8.856	179.268	5690.24	34.04	-524.78	6.71	40.4985395	-104.4967472	0.00	
5830.00†	8.856	179.268	5789.05	35.04	-540.17	6.90	40.4984972	-104.4967472	0.00	
5930.00†	8.856	179.268	5887.86	36.04	-555.56	7.10	40.4984549	-104.4967471	0.00	
6030.00†	8.856	179.268	5986.67	37.04	-570.96	7.30	40.4984127	-104.4967470	0.00	
6130.00†	8.856	179.268	6085.48	38.04	-586.35	7.49	40.4983704	-104.4967469	0.00	
6191.29	8.856	179.268	6146.03	38.65	-595.78	7.61	40.4983445	-104.4967469	0.00	KOP
6230.00†	9.514	200.840	6184.26	40.21	-601.76	6.51	40.4983282	-104.4967511	9.00	
6330.00†	15.270	234.430	6282.01	55.05	-617.17	-7.17	40.4982863	-104.4968009	9.00	
6430.00†	23.163	247.873	6376.41	85.12	-632.27	-36.15	40.4982457	-104.4969057	9.00	
6530.00†	31.631	254.577	6465.13	129.69	-646.68	-79.74	40.4982075	-104.4970630	9.00	
6630.00†	40.312	258.648	6546.00	187.67	-660.05	-136.85	40.4981726	-104.4972689	9.00	
6730.00†	49.092	261.471	6617.01	257.62	-672.05	-206.08	40.4981419	-104.4975183	9.00	
6830.00†	57.924	263.626	6676.43	337.82	-682.37	-285.72	40.4981160	-104.4978050	9.00	
6930.00†	66.787	265.398	6722.78	426.30	-690.78	-373.81	40.4980956	-104.4981221	9.00	
7030.00†	75.667	266.948	6754.94	520.87	-697.06	-468.18	40.4980813	-104.4984616	9.00	
7130.00†	84.556	268.379	6772.09	619.22	-701.06	-566.51	40.4980734	-104.4988153	9.00	
7191.22	90.000	269.230	6775.00†	680.25	-702.33	-627.63	40.4980718	-104.4990351	9.00	LP/TPZ
7230.00†	90.000	269.230	6775.00	718.95	-702.85	-666.40	40.4980716	-104.4991746	0.00	
7330.00†	90.000	269.230	6775.00	818.74	-704.20	-766.39	40.4980710	-104.4995341	0.00	
7430.00†	90.000	269.230	6775.00	918.53	-705.54	-866.38	40.4980704	-104.4998937	0.00	
7530.00†	90.000	269.230	6775.00	1018.33	-706.89	-966.38	40.4980698	-104.5002532	0.00	
7630.00†	90.000	269.230	6775.00	1118.12	-708.23	-1066.37	40.4980692	-104.5006128	0.00	
7730.00†	90.000	269.230	6775.00	1217.91	-709.57	-1166.36	40.4980686	-104.5009724	0.00	
7830.00†	90.000	269.230	6775.00	1317.71	-710.92	-1266.35	40.4980680	-104.5013319	0.00	
7930.00†	90.000	269.230	6775.00	1417.50	-712.26	-1366.34	40.4980674	-104.5016915	0.00	
8030.00†	90.000	269.230	6775.00	1517.29	-713.61	-1466.33	40.4980668	-104.5020510	0.00	
8130.00†	90.000	269.230	6775.00	1617.09	-714.95	-1566.32	40.4980662	-104.5024106	0.00	
8230.00†	90.000	269.230	6775.00	1716.88	-716.30	-1666.31	40.4980656	-104.5027702	0.00	
8330.00†	90.000	269.230	6775.00	1816.68	-717.64	-1766.30	40.4980650	-104.5031297	0.00	
8430.00†	90.000	269.230	6775.00	1916.47	-718.98	-1866.29	40.4980644	-104.5034893	0.00	



Planned Wellpath Report

GABEL A10-635 (REV-A.0) PWP

Page 4 of 7



REFERENCE WELLPATH IDENTIFICATION

Operator	NOBLE ENERGY, INC	Well	GABEL A10-635
Field	WELD COUNTY (NOBLE NAD 83 GRID)	API/Legal	
Facility	SEC.12-T06N-R64W	Wellbore	GABEL A10-635 PWB
Slot	SLOT#14 GABEL A10-635 (2335'FSL & 2209'FEL, SEC.12)		

WELLPATH DATA (180 stations) † = interpolated, ‡ = extrapolated station

MD [ft]	Inclination [°]	Azimuth [°]	TVD [ft]	Vert Sect [ft]	North [ft]	East [ft]	Latitude	Longitude	DLS [°/100ft]	Comments
8530.00†	90.000	269.230	6775.00	2016.26	-720.33	-1966.29	40.4980638	-104.5038488	0.00	
8630.00†	90.000	269.230	6775.00	2116.06	-721.67	-2066.28	40.4980632	-104.5042084	0.00	
8730.00†	90.000	269.230	6775.00	2215.85	-723.02	-2166.27	40.4980626	-104.5045680	0.00	
8830.00†	90.000	269.230	6775.00	2315.64	-724.36	-2266.26	40.4980619	-104.5049275	0.00	
8930.00†	90.000	269.230	6775.00	2415.44	-725.71	-2366.25	40.4980613	-104.5052871	0.00	
9030.00†	90.000	269.230	6775.00	2515.23	-727.05	-2466.24	40.4980607	-104.5056466	0.00	
9130.00†	90.000	269.230	6775.00	2615.02	-728.39	-2566.23	40.4980601	-104.5060062	0.00	
9230.00†	90.000	269.230	6775.00	2714.82	-729.74	-2666.22	40.4980595	-104.5063657	0.00	
9330.00†	90.000	269.230	6775.00	2814.61	-731.08	-2766.21	40.4980589	-104.5067253	0.00	
9430.00†	90.000	269.230	6775.00	2914.41	-732.43	-2866.20	40.4980583	-104.5070849	0.00	
9530.00†	90.000	269.230	6775.00	3014.20	-733.77	-2966.19	40.4980577	-104.5074444	0.00	
9630.00†	90.000	269.230	6775.00	3113.99	-735.12	-3066.19	40.4980570	-104.5078040	0.00	
9730.00†	90.000	269.230	6775.00	3213.79	-736.46	-3166.18	40.4980564	-104.5081635	0.00	
9830.00†	90.000	269.230	6775.00	3313.58	-737.81	-3266.17	40.4980558	-104.5085231	0.00	
9930.00†	90.000	269.230	6775.00	3413.37	-739.15	-3366.16	40.4980552	-104.5088827	0.00	
10030.00†	90.000	269.230	6775.00	3513.17	-740.49	-3466.15	40.4980545	-104.5092422	0.00	
10130.00†	90.000	269.230	6775.00	3612.96	-741.84	-3566.14	40.4980539	-104.5096018	0.00	
10230.00†	90.000	269.230	6775.00	3712.76	-743.18	-3666.13	40.4980533	-104.5099613	0.00	
10330.00†	90.000	269.230	6775.00	3812.55	-744.53	-3766.12	40.4980527	-104.5103209	0.00	
10430.00†	90.000	269.230	6775.00	3912.34	-745.87	-3866.11	40.4980520	-104.5106805	0.00	
10530.00†	90.000	269.230	6775.00	4012.14	-747.22	-3966.10	40.4980514	-104.5110400	0.00	
10630.00†	90.000	269.230	6775.00	4111.93	-748.56	-4066.10	40.4980508	-104.5113996	0.00	
10730.00†	90.000	269.230	6775.00	4211.72	-749.90	-4166.09	40.4980502	-104.5117591	0.00	
10830.00†	90.000	269.230	6775.00	4311.52	-751.25	-4266.08	40.4980495	-104.5121187	0.00	
10930.00†	90.000	269.230	6775.00	4411.31	-752.59	-4366.07	40.4980489	-104.5124783	0.00	
11030.00†	90.000	269.230	6775.00	4511.10	-753.94	-4466.06	40.4980483	-104.5128378	0.00	
11130.00†	90.000	269.230	6775.00	4610.90	-755.28	-4566.05	40.4980476	-104.5131974	0.00	
11230.00†	90.000	269.230	6775.00	4710.69	-756.63	-4666.04	40.4980470	-104.5135569	0.00	
11330.00†	90.000	269.230	6775.00	4810.49	-757.97	-4766.03	40.4980464	-104.5139165	0.00	
11430.00†	90.000	269.230	6775.00	4910.28	-759.32	-4866.02	40.4980457	-104.5142761	0.00	
11530.00†	90.000	269.230	6775.00	5010.07	-760.66	-4966.01	40.4980451	-104.5146356	0.00	
11630.00†	90.000	269.230	6775.00	5109.87	-762.00	-5066.01	40.4980444	-104.5149952	0.00	
11730.00†	90.000	269.230	6775.00	5209.66	-763.35	-5166.00	40.4980438	-104.5153547	0.00	
11830.00†	90.000	269.230	6775.00	5309.45	-764.69	-5265.99	40.4980431	-104.5157143	0.00	
11930.00†	90.000	269.230	6775.00	5409.25	-766.04	-5365.98	40.4980425	-104.5160739	0.00	
12030.00†	90.000	269.230	6775.00	5509.04	-767.38	-5465.97	40.4980419	-104.5164334	0.00	
12130.00†	90.000	269.230	6775.00	5608.83	-768.73	-5565.96	40.4980412	-104.5167930	0.00	
12230.00†	90.000	269.230	6775.00	5708.63	-770.07	-5665.95	40.4980406	-104.5171525	0.00	
12330.00†	90.000	269.230	6775.00	5808.42	-771.41	-5765.94	40.4980399	-104.5175121	0.00	
12430.00†	90.000	269.230	6775.00	5908.22	-772.76	-5865.93	40.4980393	-104.5178716	0.00	
12530.00†	90.000	269.230	6775.00	6008.01	-774.10	-5965.92	40.4980386	-104.5182312	0.00	
12630.00†	90.000	269.230	6775.00	6107.80	-775.45	-6065.91	40.4980380	-104.5185908	0.00	
12730.00†	90.000	269.230	6775.00	6207.60	-776.79	-6165.91	40.4980373	-104.5189503	0.00	
12830.00†	90.000	269.230	6775.00	6307.39	-778.14	-6265.90	40.4980367	-104.5193099	0.00	
12930.00†	90.000	269.230	6775.00	6407.18	-779.48	-6365.89	40.4980360	-104.5196694	0.00	



Planned Wellpath Report

GABEL A10-635 (REV-A.0) PWP

Page 5 of 7



REFERENCE WELLPATH IDENTIFICATION			
Operator	NOBLE ENERGY, INC	Well	GABEL A10-635
Field	WELD COUNTY (NOBLE NAD 83 GRID)	API/Legal	
Facility	SEC.12-T06N-R64W	Wellbore	GABEL A10-635 PWB
Slot	SLOT#14 GABEL A10-635 (2335'FSL & 2209'FEL, SEC.12)		

WELLPATH DATA (180 stations) † = interpolated, ‡ = extrapolated station										
MD [ft]	Inclination [°]	Azimuth [°]	TVD [ft]	Vert Sect [ft]	North [ft]	East [ft]	Latitude	Longitude	DLS [°/100ft]	Comments
13030.00†	90.000	269.230	6775.00	6506.98	-780.83	-6465.88	40.4980353	-104.5200290	0.00	
13130.00†	90.000	269.230	6775.00	6606.77	-782.17	-6565.87	40.4980347	-104.5203886	0.00	
13230.00†	90.000	269.230	6775.00	6706.57	-783.51	-6665.86	40.4980340	-104.5207481	0.00	
13330.00†	90.000	269.230	6775.00	6806.36	-784.86	-6765.85	40.4980334	-104.5211077	0.00	
13430.00†	90.000	269.230	6775.00	6906.15	-786.20	-6865.84	40.4980327	-104.5214672	0.00	
13530.00†	90.000	269.230	6775.00	7005.95	-787.55	-6965.83	40.4980320	-104.5218268	0.00	
13630.00†	90.000	269.230	6775.00	7105.74	-788.89	-7065.82	40.4980314	-104.5221864	0.00	
13730.00†	90.000	269.230	6775.00	7205.53	-790.24	-7165.82	40.4980307	-104.5225459	0.00	
13830.00†	90.000	269.230	6775.00	7305.33	-791.58	-7265.81	40.4980301	-104.5229055	0.00	
13930.00†	90.000	269.230	6775.00	7405.12	-792.92	-7365.80	40.4980294	-104.5232650	0.00	
14030.00†	90.000	269.230	6775.00	7504.91	-794.27	-7465.79	40.4980287	-104.5236246	0.00	
14130.00†	90.000	269.230	6775.00	7604.71	-795.61	-7565.78	40.4980281	-104.5239842	0.00	
14230.00†	90.000	269.230	6775.00	7704.50	-796.96	-7665.77	40.4980274	-104.5243437	0.00	
14330.00†	90.000	269.230	6775.00	7804.30	-798.30	-7765.76	40.4980267	-104.5247033	0.00	
14430.00†	90.000	269.230	6775.00	7904.09	-799.65	-7865.75	40.4980260	-104.5250628	0.00	
14530.00†	90.000	269.230	6775.00	8003.88	-800.99	-7965.74	40.4980254	-104.5254224	0.00	
14630.00†	90.000	269.230	6775.00	8103.68	-802.34	-8065.73	40.4980247	-104.5257819	0.00	
14730.00†	90.000	269.230	6775.00	8203.47	-803.68	-8165.72	40.4980240	-104.5261415	0.00	
14830.00†	90.000	269.230	6775.00	8303.26	-805.02	-8265.72	40.4980233	-104.5265011	0.00	
14930.00†	90.000	269.230	6775.00	8403.06	-806.37	-8365.71	40.4980227	-104.5268606	0.00	
15030.00†	90.000	269.230	6775.00	8502.85	-807.71	-8465.70	40.4980220	-104.5272202	0.00	
15130.00†	90.000	269.230	6775.00	8602.64	-809.06	-8565.69	40.4980213	-104.5275797	0.00	
15230.00†	90.000	269.230	6775.00	8702.44	-810.40	-8665.68	40.4980206	-104.5279393	0.00	
15330.00†	90.000	269.230	6775.00	8802.23	-811.75	-8765.67	40.4980199	-104.5282989	0.00	
15430.00†	90.000	269.230	6775.00	8902.03	-813.09	-8865.66	40.4980193	-104.5286584	0.00	
15530.00†	90.000	269.230	6775.00	9001.82	-814.43	-8965.65	40.4980186	-104.5290180	0.00	
15630.00†	90.000	269.230	6775.00	9101.61	-815.78	-9065.64	40.4980179	-104.5293775	0.00	
15730.00†	90.000	269.230	6775.00	9201.41	-817.12	-9165.63	40.4980172	-104.5297371	0.00	
15830.00†	90.000	269.230	6775.00	9301.20	-818.47	-9265.63	40.4980165	-104.5300967	0.00	
15930.00†	90.000	269.230	6775.00	9400.99	-819.81	-9365.62	40.4980158	-104.5304562	0.00	
16030.00†	90.000	269.230	6775.00	9500.79	-821.16	-9465.61	40.4980151	-104.5308158	0.00	
16130.00†	90.000	269.230	6775.00	9600.58	-822.50	-9565.60	40.4980145	-104.5311753	0.00	
16230.00†	90.000	269.230	6775.00	9700.38	-823.85	-9665.59	40.4980138	-104.5315349	0.00	
16330.00†	90.000	269.230	6775.00	9800.17	-825.19	-9765.58	40.4980131	-104.5318945	0.00	
16430.00†	90.000	269.230	6775.00	9899.96	-826.53	-9865.57	40.4980124	-104.5322540	0.00	
16530.00†	90.000	269.230	6775.00	9999.76	-827.88	-9965.56	40.4980117	-104.5326136	0.00	
16630.00†	90.000	269.230	6775.00	10099.55	-829.22	-10065.55	40.4980110	-104.5329731	0.00	
16730.00†	90.000	269.230	6775.00	10199.34	-830.57	-10165.54	40.4980103	-104.5333327	0.00	
16830.00†	90.000	269.230	6775.00	10299.14	-831.91	-10265.54	40.4980096	-104.5336922	0.00	
16930.00†	90.000	269.230	6775.00	10398.93	-833.26	-10365.53	40.4980089	-104.5340518	0.00	
17030.00†	90.000	269.230	6775.00	10498.72	-834.60	-10465.52	40.4980082	-104.5344114	0.00	
17130.00†	90.000	269.230	6775.00	10598.52	-835.94	-10565.51	40.4980075	-104.5347709	0.00	
17230.00†	90.000	269.230	6775.00	10698.31	-837.29	-10665.50	40.4980068	-104.5351305	0.00	
17330.00†	90.000	269.230	6775.00	10798.11	-838.63	-10765.49	40.4980061	-104.5354900	0.00	
17338.11	90.000	269.230	6775.00 [‡]	10806.20	-838.74	-10773.60	40.4980060	-104.5355192	0.00	BHL

REFERENCE WELLPATH IDENTIFICATION			
Operator	NOBLE ENERGY, INC	Well	GABEL A10-635
Field	WELD COUNTY (NOBLE NAD 83 GRID)	API/Legal	
Facility	SEC.12-T06N-R64W	Wellbore	GABEL A10-635 PWB
Slot	SLOT#14 GABEL A10-635 (2335'FSL & 2209'FEL,SEC.12)		

HOLE & CASING SECTIONS - Ref Wellbore: GABEL A10-635 PWB Ref Wellpath: GABEL A10-635 (REV-A.0) PWP									
String/Diameter	Start MD [ft]	End MD [ft]	Interval [ft]	Start TVD [ft]	End TVD [ft]	Start N/S [ft]	Start E/W [ft]	End N/S [ft]	End E/W [ft]
9.625in Casing Surface	30.00	1950.00	1920.00	30.00	1950.00	0.00	0.00	0.00	0.00

TARGETS									
Name	MD [ft]	TVD [ft]	North [ft]	East [ft]	Grid East [US ft]	Grid North [US ft]	Latitude	Longitude	Shape
OGPD 2 SEC. 10-T06N-R64W	N/A	-8.00	2644.28	-74.41	3278923.07	1429205.68	40.5072400	-104.4969100	polygon
2D Polygon: dimensions not calculated									
OGPD 2 SEC. 11-T06N-R64W	N/A	-8.00	2644.28	-74.41	3278923.07	1429205.68	40.5072400	-104.4969100	polygon
2D Polygon: dimensions not calculated									
OGPD 2 SEC.12-T06N-R64W	N/A	-8.00	2644.28	-74.41	3278923.07	1429205.68	40.5072400	-104.4969100	polygon
2D Polygon: dimensions not calculated									
2) GABEL A10-635 BHL Rev-1 (1673'FSL & 2432'FEL,SEC.10)	17338.11	6775.00	-838.74	-10773.60	3268224.26	1425722.78	40.4980060	-104.5355192	point
1) GABEL A10-635 LP Rev-1 (1641'FSL & 2445'FWL,SEC.12)	7191.22	6775.00	-702.33	-627.63	3278369.87	1425859.18	40.4980718	-104.4990351	point

SURVEY PROGRAM - Ref Wellbore: GABEL A10-635 PWB Ref Wellpath: GABEL A10-635 (REV-A.0) PWP				
Start MD [ft]	End MD [ft]	Positional Uncertainty Model	Log Name/Comment	Wellbore
30.00	17338.11	OWSG MWD rev2 (MS+IFR1)		GABEL A10-635 PWB



Planned Wellpath Report

GABEL A10-635 (REV-A.0) PWP
Page 7 of 7



REFERENCE WELLPATH IDENTIFICATION			
Operator	NOBLE ENERGY, INC	Well	GABEL A10-635
Field	WELD COUNTY (NOBLE NAD 83 GRID)	API/Legal	
Facility	SEC.12-T06N-R64W	Wellbore	GABEL A10-635 PWB
Slot	SLOT#14 GABEL A10-635 (2335'FSL & 2209'FEL, SEC.12)		

DESIGN COMMENTS				
MD [ft]	Inclination [°]	Azimuth [°]	TVD [ft]	Comment
30.00	0.000	179.268	30.00	SHL
2100.00	0.000	179.268	2100.00	End of Tangent
2542.79	8.856	179.268	2541.03	Build (XS)
6191.29	8.856	179.268	6146.03	KOP
7191.22	90.000	269.230	6775.00	LP/TPZ
17338.11	90.000	269.230	6775.00	BHL