

NOBLE ENERGY, INC

Location: COLORADO Slot: SLOT#13 GABEL A10-645 (2357'FSL & 2209'FEL,SEC.12)
 Field: WELD COUNTY (NOBLE NAD 83 GRID) Well: GABEL A10-645
 Facility: SEC.12-T06N-R64W Wellbore: GABEL A10-645 PWB

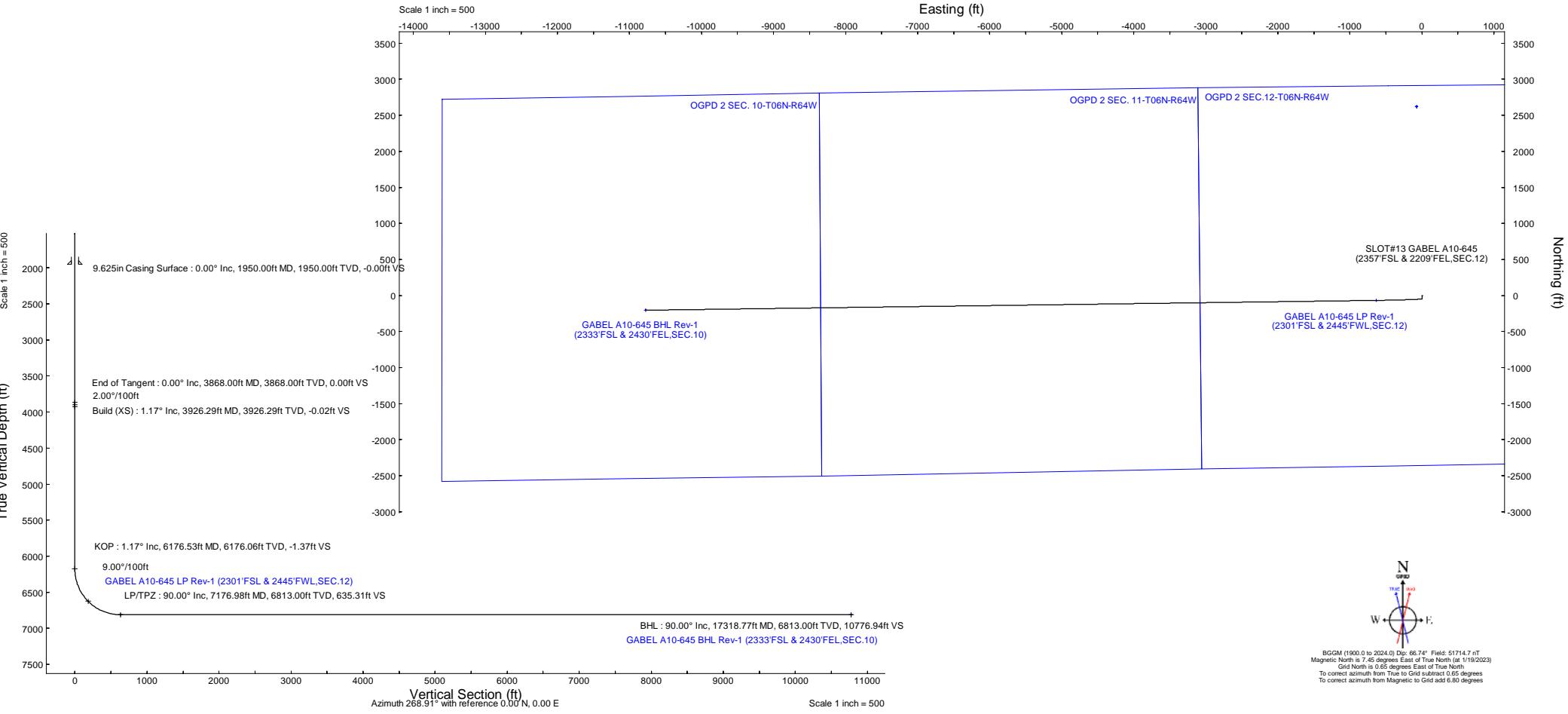
Well Profile Data								
Design Comment	MD (ft)	Inc (°)	Az (°)	TVD (ft)	Local N (ft)	Local E (ft)	DLS (°/100ft)	VS (ft)
SHL	30.00	0.000	177.218	30.00	0.00	0.00	0.00	0.00
End of Tangent	3868.00	0.000	177.218	3868.00	0.00	0.00	0.00	0.00
Build (XS)	3926.29	1.166	177.218	3926.29	-0.59	0.03	2.00	-0.02
KOP	6176.53	1.166	177.218	6176.06	-46.32	2.25	0.00	-1.37
LP/TPZ	7176.98	90.000	269.230	6813.00	-67.83	-634.14	9.00	635.31
BHL	17318.77	90.000	269.230	6813.00	-204.18	-10775.01	0.00	10776.94

Plot reference wellpath is GABEL A10-645 (REV-A.0) PWP	Grid System: NAD83 / Lambert Colorado SP, Northern Zone (501), US feet
True vertical depths are referenced to (4715'GL+30'KB@4745'RKB) (RKB)	North Reference: Grid north
Reference wellpath measured depths are referenced to (4715'GL+30'KB@4745'RKB) (RKB)	Scale: True distance
(4715'GL+30'KB@4745'RKB) (RKB) to Mean Sea Level: 4745 feet	Coordinates are in feet referenced to Slot
Mean Sea Level to Ground level (At Slot: SLOT#13 GABEL A10-645 (2357'FSL & 2209'FEL,SEC.12)): 0 feet	Depths are in feet
Offset wellpath MDs are referenced to each path's default MD datum	Created by: guenaler on 2023-01-20; Database: WellArchitectDB

Targets								
Name	MD (ft)	TVD (ft)	Local N (ft)	Local E (ft)	Grid East (US ft)	Grid North (US ft)	Latitude	Longitude
OGPD 2 SEC. 10-T06N-R64W	N/A	-9.00	2618.78	-74.13	3278923.07	1429205.68	40°30'26.0640"N	104°29'48.8760"W
OGPD 2 SEC. 11-T06N-R64W	N/A	-9.00	2618.78	-74.13	3278923.07	1429205.68	40°30'26.0640"N	104°29'48.8760"W
OGPD 2 SEC. 12-T06N-R64W	N/A	-9.00	2618.78	-74.13	3278923.07	1429205.68	40°30'26.0640"N	104°29'48.8760"W
GABEL A10-645 BHL Rev-1 (2333'FSL & 2430'FEL,SEC.10)	17318.77	6813.00	-204.18	-10775.01	3268222.57	1426382.81	40°29'59.3438"N	104°32'7.7982"W
GABEL A10-645 LP Rev-1 (2301'FSL & 2445'FWL,SEC.12)	7176.98	6813.00	-67.83	-634.14	3278963.08	1426519.16	40°29'59.5806"N	104°29'56.5180"W

Location Information							
Facility Name		Grid East (US ft)	Grid North (US ft)	Latitude	Longitude		
SEC.12-T06N-R64W		3278923.071	1429205.676	40°30'26.0640"N	104°29'48.8760"W		
Slot	Local N (ft)	Local E (ft)	Grid East (US ft)	Grid North (US ft)	Latitude	Longitude	
SLOT#13 GABEL A10-645 (2357'FSL & 2209'FEL,SEC.12)	-2618.78	74.13	3278997.193	1426586.988	40°30'0.1800"N	104°29'48.3000"W	
(4715'GL+30'KB@4745'RKB) (RKB) to Ground level (At Slot: SLOT#13 GABEL A10-645 (2357'FSL & 2209'FEL,SEC.12))		4745ft					
Mean Sea Level to Ground level (At Slot: SLOT#13 GABEL A10-645 (2357'FSL & 2209'FEL,SEC.12))		0ft					
(4715'GL+30'KB@4745'RKB) (RKB) to Mean Sea Level		4745ft					

Survey Program					
Start MD (ft)	End MD (ft)	Tool	Model	Log Name/Comment	Wellbore
30.00	17318.77	OWSG MWD rev2	OWSG MWD rev2 (MS+IFR1)		GABEL A10-645 PWB





Planned Wellpath Report

GABEL A10-645 (REV-A.0) PWP

Page 1 of 7



REFERENCE WELLPATH IDENTIFICATION

Operator	NOBLE ENERGY, INC	Well	GABEL A10-645
Field	WELD COUNTY (NOBLE NAD 83 GRID)	API/Legal	
Facility	SEC.12-T06N-R64W	Wellbore	GABEL A10-645 PWB
Slot	SLOT#13 GABEL A10-645 (2357'FSL & 2209'FEL, SEC.12)		

REPORT SETUP INFORMATION

Projection System	NAD83 / Lambert Colorado SP, Northern Zone (501), US feet	Software System	WellArchitect® 6.0
North Reference	Grid	User	Guenaler
Scale	0.999966	Report Generated	1/20/2023 at 9:02:23 PM
Convergence at slot	0.65° East	Database	WellArchitectDB

WELLPATH LOCATION

	Local coordinates		Grid coordinates		Geographic coordinates	
	North[ft]	East[ft]	Easting[US ft]	Northing[US ft]	Latitude	Longitude
Slot Location	-2618.78	74.13	3278997.19	1426586.99	40.5000500°	-104.4967500°
Facility Reference Pt			3278923.07	1429205.68	40.5072400°	-104.4969100°
Field Reference Pt			3000000.00	4454105.15	48.7761986°	-105.5000000°

WELLPATH DATUM

Calculation method	Minimum curvature	(4715'GL+30'KB@4745'RKB) (RKB) to Facility Vertical Datum	4745.00ft
Horizontal Reference Pt	Slot	(4715'GL+30'KB@4745'RKB) (RKB) to Mean Sea Level	4745.00ft
Vertical Reference Pt	(4715'GL+30'KB@4745'RKB) (RKB)	(4715'GL+30'KB@4745'RKB) (RKB) to Ground Level at Slot (SLOT#13 GABEL A10-645 (2357'FSL & 2209'FEL, SEC.12))	4745.00ft
MD Reference Pt	(4715'GL+30'KB@4745'RKB) (RKB)	Section Origin	N 0.00, E 0.00 ft
Field Vertical Reference	Mean Sea Level	Section Azimuth	268.91°



Planned Wellpath Report

GABEL A10-645 (REV-A.0) PWP

Page 2 of 7



REFERENCE WELLPATH IDENTIFICATION			
Operator	NOBLE ENERGY, INC	Well	GABEL A10-645
Field	WELD COUNTY (NOBLE NAD 83 GRID)	API/Legal	
Facility	SEC.12-T06N-R64W	Wellbore	GABEL A10-645 PWB
Slot	SLOT#13 GABEL A10-645 (2357'FSL & 2209'FEL,SEC.12)		

WELLPATH DATA (179 stations) † = interpolated, ‡ = extrapolated station										
MD [ft]	Inclination [°]	Azimuth [°]	TVD [ft]	Vert Sect [ft]	North [ft]	East [ft]	Latitude	Longitude	DLS [°/100ft]	Comments
0.00†	0.000	177.218	0.00	0.00	0.00	0.00	40.5000500	-104.4967500	0.00	
30.00	0.000	177.218	30.00	0.00	0.00	0.00	40.5000500	-104.4967500	0.00	SHL
130.00†	0.000	177.218	130.00	0.00	0.00	0.00	40.5000500	-104.4967500	0.00	
230.00†	0.000	177.218	230.00	0.00	0.00	0.00	40.5000500	-104.4967500	0.00	
330.00†	0.000	177.218	330.00	0.00	0.00	0.00	40.5000500	-104.4967500	0.00	
430.00†	0.000	177.218	430.00	0.00	0.00	0.00	40.5000500	-104.4967500	0.00	
530.00†	0.000	177.218	530.00	0.00	0.00	0.00	40.5000500	-104.4967500	0.00	
630.00†	0.000	177.218	630.00	0.00	0.00	0.00	40.5000500	-104.4967500	0.00	
730.00†	0.000	177.218	730.00	0.00	0.00	0.00	40.5000500	-104.4967500	0.00	
830.00†	0.000	177.218	830.00	0.00	0.00	0.00	40.5000500	-104.4967500	0.00	
930.00†	0.000	177.218	930.00	0.00	0.00	0.00	40.5000500	-104.4967500	0.00	
1030.00†	0.000	177.218	1030.00	0.00	0.00	0.00	40.5000500	-104.4967500	0.00	
1130.00†	0.000	177.218	1130.00	0.00	0.00	0.00	40.5000500	-104.4967500	0.00	
1230.00†	0.000	177.218	1230.00	0.00	0.00	0.00	40.5000500	-104.4967500	0.00	
1330.00†	0.000	177.218	1330.00	0.00	0.00	0.00	40.5000500	-104.4967500	0.00	
1430.00†	0.000	177.218	1430.00	0.00	0.00	0.00	40.5000500	-104.4967500	0.00	
1530.00†	0.000	177.218	1530.00	0.00	0.00	0.00	40.5000500	-104.4967500	0.00	
1630.00†	0.000	177.218	1630.00	0.00	0.00	0.00	40.5000500	-104.4967500	0.00	
1730.00†	0.000	177.218	1730.00	0.00	0.00	0.00	40.5000500	-104.4967500	0.00	
1830.00†	0.000	177.218	1830.00	0.00	0.00	0.00	40.5000500	-104.4967500	0.00	
1930.00†	0.000	177.218	1930.00	0.00	0.00	0.00	40.5000500	-104.4967500	0.00	
2030.00†	0.000	177.218	2030.00	0.00	0.00	0.00	40.5000500	-104.4967500	0.00	
2130.00†	0.000	177.218	2130.00	0.00	0.00	0.00	40.5000500	-104.4967500	0.00	
2230.00†	0.000	177.218	2230.00	0.00	0.00	0.00	40.5000500	-104.4967500	0.00	
2330.00†	0.000	177.218	2330.00	0.00	0.00	0.00	40.5000500	-104.4967500	0.00	
2430.00†	0.000	177.218	2430.00	0.00	0.00	0.00	40.5000500	-104.4967500	0.00	
2530.00†	0.000	177.218	2530.00	0.00	0.00	0.00	40.5000500	-104.4967500	0.00	
2630.00†	0.000	177.218	2630.00	0.00	0.00	0.00	40.5000500	-104.4967500	0.00	
2730.00†	0.000	177.218	2730.00	0.00	0.00	0.00	40.5000500	-104.4967500	0.00	
2830.00†	0.000	177.218	2830.00	0.00	0.00	0.00	40.5000500	-104.4967500	0.00	
2930.00†	0.000	177.218	2930.00	0.00	0.00	0.00	40.5000500	-104.4967500	0.00	
3030.00†	0.000	177.218	3030.00	0.00	0.00	0.00	40.5000500	-104.4967500	0.00	
3130.00†	0.000	177.218	3130.00	0.00	0.00	0.00	40.5000500	-104.4967500	0.00	
3230.00†	0.000	177.218	3230.00	0.00	0.00	0.00	40.5000500	-104.4967500	0.00	
3330.00†	0.000	177.218	3330.00	0.00	0.00	0.00	40.5000500	-104.4967500	0.00	
3430.00†	0.000	177.218	3430.00	0.00	0.00	0.00	40.5000500	-104.4967500	0.00	
3530.00†	0.000	177.218	3530.00	0.00	0.00	0.00	40.5000500	-104.4967500	0.00	
3630.00†	0.000	177.218	3630.00	0.00	0.00	0.00	40.5000500	-104.4967500	0.00	
3730.00†	0.000	177.218	3730.00	0.00	0.00	0.00	40.5000500	-104.4967500	0.00	
3830.00†	0.000	177.218	3830.00	0.00	0.00	0.00	40.5000500	-104.4967500	0.00	
3868.00	0.000	177.218	3868.00	0.00	0.00	0.00	40.5000500	-104.4967500	0.00	End of Tangent
3926.29	1.166	177.218	3926.29	-0.02	-0.59	0.03	40.5000484	-104.4967499	2.00	Build (XS)
3930.00†	1.166	177.218	3930.00	-0.02	-0.67	0.03	40.5000482	-104.4967499	0.00	
4030.00†	1.166	177.218	4029.97	-0.08	-2.70	0.13	40.5000426	-104.4967496	0.00	
4130.00†	1.166	177.218	4129.95	-0.14	-4.73	0.23	40.5000370	-104.4967494	0.00	



Planned Wellpath Report

GABEL A10-645 (REV-A.0) PWP

Page 3 of 7



REFERENCE WELLPATH IDENTIFICATION

Operator	NOBLE ENERGY, INC	Well	GABEL A10-645
Field	WELD COUNTY (NOBLE NAD 83 GRID)	API/Legal	
Facility	SEC.12-T06N-R64W	Wellbore	GABEL A10-645 PWB
Slot	SLOT#13 GABEL A10-645 (2357'FSL & 2209'FEL,SEC.12)		

WELLPATH DATA (179 stations) † = interpolated, ‡ = extrapolated station

MD [ft]	Inclination [°]	Azimuth [°]	TVD [ft]	Vert Sect [ft]	North [ft]	East [ft]	Latitude	Longitude	DLS [°/100ft]	Comments
4230.00†	1.166	177.218	4229.93	-0.20	-6.76	0.33	40.5000314	-104.4967491	0.00	
4330.00†	1.166	177.218	4329.91	-0.26	-8.80	0.43	40.5000258	-104.4967488	0.00	
4430.00†	1.166	177.218	4429.89	-0.32	-10.83	0.53	40.5000203	-104.4967485	0.00	
4530.00†	1.166	177.218	4529.87	-0.38	-12.86	0.63	40.5000147	-104.4967483	0.00	
4630.00†	1.166	177.218	4629.85	-0.44	-14.89	0.72	40.5000091	-104.4967480	0.00	
4730.00†	1.166	177.218	4729.83	-0.50	-16.93	0.82	40.5000035	-104.4967477	0.00	
4830.00†	1.166	177.218	4829.81	-0.56	-18.96	0.92	40.4999979	-104.4967475	0.00	
4930.00†	1.166	177.218	4929.79	-0.62	-20.99	1.02	40.4999924	-104.4967472	0.00	
5030.00†	1.166	177.218	5029.77	-0.68	-23.02	1.12	40.4999868	-104.4967469	0.00	
5130.00†	1.166	177.218	5129.75	-0.74	-25.05	1.22	40.4999812	-104.4967466	0.00	
5230.00†	1.166	177.218	5229.73	-0.80	-27.09	1.32	40.4999756	-104.4967464	0.00	
5330.00†	1.166	177.218	5329.71	-0.86	-29.12	1.42	40.4999700	-104.4967461	0.00	
5430.00†	1.166	177.218	5429.68	-0.92	-31.15	1.51	40.4999645	-104.4967458	0.00	
5530.00†	1.166	177.218	5529.66	-0.98	-33.18	1.61	40.4999589	-104.4967456	0.00	
5630.00†	1.166	177.218	5629.64	-1.04	-35.21	1.71	40.4999533	-104.4967453	0.00	
5730.00†	1.166	177.218	5729.62	-1.10	-37.25	1.81	40.4999477	-104.4967450	0.00	
5830.00†	1.166	177.218	5829.60	-1.16	-39.28	1.91	40.4999421	-104.4967447	0.00	
5930.00†	1.166	177.218	5929.58	-1.22	-41.31	2.01	40.4999366	-104.4967445	0.00	
6030.00†	1.166	177.218	6029.56	-1.28	-43.34	2.11	40.4999310	-104.4967442	0.00	
6130.00†	1.166	177.218	6129.54	-1.35	-45.38	2.21	40.4999254	-104.4967439	0.00	
6176.53	1.166	177.218	6176.06	-1.37	-46.32	2.25	40.4999228	-104.4967438	0.00	KOP
6230.00†	4.912	255.540	6229.46	0.84	-47.44	0.06	40.4999198	-104.4967517	9.00	
6330.00†	13.820	264.487	6328.03	16.94	-49.66	-16.01	40.4999142	-104.4968096	9.00	
6430.00†	22.800	266.457	6422.87	48.28	-52.01	-47.30	40.4999087	-104.4969222	9.00	
6530.00†	31.791	267.349	6511.65	94.06	-54.43	-93.04	40.4999035	-104.4970867	9.00	
6630.00†	40.785	267.879	6592.17	153.17	-56.86	-152.12	40.4998987	-104.4972992	9.00	
6730.00†	49.782	268.244	6662.46	224.15	-59.24	-223.06	40.4998943	-104.4975544	9.00	
6830.00†	58.779	268.523	6720.78	305.25	-61.52	-304.14	40.4998906	-104.4978460	9.00	
6930.00†	67.776	268.754	6765.70	394.47	-63.63	-393.34	40.4998876	-104.4981668	9.00	
7030.00†	76.774	268.956	6796.11	489.63	-65.53	-488.48	40.4998853	-104.4985090	9.00	
7130.00†	85.773	269.144	6811.27	588.37	-67.17	-587.20	40.4998839	-104.4988640	9.00	
7176.98	90.000	269.230	6813.00†	635.31	-67.83	-634.14	40.4998835	-104.4990328	9.00	LP/TPZ
7230.00†	90.000	269.230	6813.00	688.33	-68.55	-687.15	40.4998832	-104.4992234	0.00	
7330.00†	90.000	269.230	6813.00	788.32	-69.89	-787.14	40.4998826	-104.4995830	0.00	
7430.00†	90.000	269.230	6813.00	888.32	-71.23	-887.13	40.4998820	-104.4999426	0.00	
7530.00†	90.000	269.230	6813.00	988.32	-72.58	-987.12	40.4998814	-104.5003021	0.00	
7630.00†	90.000	269.230	6813.00	1088.32	-73.92	-1087.11	40.4998808	-104.5006617	0.00	
7730.00†	90.000	269.230	6813.00	1188.32	-75.27	-1187.11	40.4998802	-104.5010213	0.00	
7830.00†	90.000	269.230	6813.00	1288.32	-76.61	-1287.10	40.4998796	-104.5013808	0.00	
7930.00†	90.000	269.230	6813.00	1388.31	-77.96	-1387.09	40.4998790	-104.5017404	0.00	
8030.00†	90.000	269.230	6813.00	1488.31	-79.30	-1487.08	40.4998784	-104.5021000	0.00	
8130.00†	90.000	269.230	6813.00	1588.31	-80.65	-1587.07	40.4998778	-104.5024595	0.00	
8230.00†	90.000	269.230	6813.00	1688.31	-81.99	-1687.06	40.4998772	-104.5028191	0.00	
8330.00†	90.000	269.230	6813.00	1788.31	-83.33	-1787.05	40.4998766	-104.5031787	0.00	
8430.00†	90.000	269.230	6813.00	1888.31	-84.68	-1887.04	40.4998760	-104.5035382	0.00	



Planned Wellpath Report

GABEL A10-645 (REV-A.0) PWP

Page 4 of 7



REFERENCE WELLPATH IDENTIFICATION

Operator	NOBLE ENERGY, INC	Well	GABEL A10-645
Field	WELD COUNTY (NOBLE NAD 83 GRID)	API/Legal	
Facility	SEC.12-T06N-R64W	Wellbore	GABEL A10-645 PWB
Slot	SLOT#13 GABEL A10-645 (2357'FSL & 2209'FEL,SEC.12)		

WELLPATH DATA (179 stations) † = interpolated, ‡ = extrapolated station

MD [ft]	Inclination [°]	Azimuth [°]	TVD [ft]	Vert Sect [ft]	North [ft]	East [ft]	Latitude	Longitude	DLS [°/100ft]	Comments
8530.00†	90.000	269.230	6813.00	1988.31	-86.02	-1987.03	40.4998754	-104.5038978	0.00	
8630.00†	90.000	269.230	6813.00	2088.30	-87.37	-2087.02	40.4998748	-104.5042574	0.00	
8730.00†	90.000	269.230	6813.00	2188.30	-88.71	-2187.01	40.4998742	-104.5046170	0.00	
8830.00†	90.000	269.230	6813.00	2288.30	-90.06	-2287.01	40.4998736	-104.5049765	0.00	
8930.00†	90.000	269.230	6813.00	2388.30	-91.40	-2387.00	40.4998729	-104.5053361	0.00	
9030.00†	90.000	269.230	6813.00	2488.30	-92.75	-2486.99	40.4998723	-104.5056957	0.00	
9130.00†	90.000	269.230	6813.00	2588.30	-94.09	-2586.98	40.4998717	-104.5060552	0.00	
9230.00†	90.000	269.230	6813.00	2688.30	-95.43	-2686.97	40.4998711	-104.5064148	0.00	
9330.00†	90.000	269.230	6813.00	2788.29	-96.78	-2786.96	40.4998705	-104.5067744	0.00	
9430.00†	90.000	269.230	6813.00	2888.29	-98.12	-2886.95	40.4998699	-104.5071339	0.00	
9530.00†	90.000	269.230	6813.00	2988.29	-99.47	-2986.94	40.4998693	-104.5074935	0.00	
9630.00†	90.000	269.230	6813.00	3088.29	-100.81	-3086.93	40.4998686	-104.5078531	0.00	
9730.00†	90.000	269.230	6813.00	3188.29	-102.16	-3186.92	40.4998680	-104.5082126	0.00	
9830.00†	90.000	269.230	6813.00	3288.29	-103.50	-3286.92	40.4998674	-104.5085722	0.00	
9930.00†	90.000	269.230	6813.00	3388.28	-104.85	-3386.91	40.4998668	-104.5089318	0.00	
10030.00†	90.000	269.230	6813.00	3488.28	-106.19	-3486.90	40.4998661	-104.5092914	0.00	
10130.00†	90.000	269.230	6813.00	3588.28	-107.53	-3586.89	40.4998655	-104.5096509	0.00	
10230.00†	90.000	269.230	6813.00	3688.28	-108.88	-3686.88	40.4998649	-104.5100105	0.00	
10330.00†	90.000	269.230	6813.00	3788.28	-110.22	-3786.87	40.4998643	-104.5103701	0.00	
10430.00†	90.000	269.230	6813.00	3888.28	-111.57	-3886.86	40.4998636	-104.5107296	0.00	
10530.00†	90.000	269.230	6813.00	3988.28	-112.91	-3986.85	40.4998630	-104.5110892	0.00	
10630.00†	90.000	269.230	6813.00	4088.27	-114.26	-4086.84	40.4998624	-104.5114488	0.00	
10730.00†	90.000	269.230	6813.00	4188.27	-115.60	-4186.83	40.4998618	-104.5118083	0.00	
10830.00†	90.000	269.230	6813.00	4288.27	-116.95	-4286.82	40.4998611	-104.5121679	0.00	
10930.00†	90.000	269.230	6813.00	4388.27	-118.29	-4386.82	40.4998605	-104.5125275	0.00	
11030.00†	90.000	269.230	6813.00	4488.27	-119.63	-4486.81	40.4998599	-104.5128870	0.00	
11130.00†	90.000	269.230	6813.00	4588.27	-120.98	-4586.80	40.4998592	-104.5132466	0.00	
11230.00†	90.000	269.230	6813.00	4688.27	-122.32	-4686.79	40.4998586	-104.5136062	0.00	
11330.00†	90.000	269.230	6813.00	4788.26	-123.67	-4786.78	40.4998579	-104.5139657	0.00	
11430.00†	90.000	269.230	6813.00	4888.26	-125.01	-4886.77	40.4998573	-104.5143253	0.00	
11530.00†	90.000	269.230	6813.00	4988.26	-126.36	-4986.76	40.4998567	-104.5146849	0.00	
11630.00†	90.000	269.230	6813.00	5088.26	-127.70	-5086.75	40.4998560	-104.5150445	0.00	
11730.00†	90.000	269.230	6813.00	5188.26	-129.05	-5186.74	40.4998554	-104.5154040	0.00	
11830.00†	90.000	269.230	6813.00	5288.26	-130.39	-5286.73	40.4998547	-104.5157636	0.00	
11930.00†	90.000	269.230	6813.00	5388.25	-131.73	-5386.73	40.4998541	-104.5161232	0.00	
12030.00†	90.000	269.230	6813.00	5488.25	-133.08	-5486.72	40.4998534	-104.5164827	0.00	
12130.00†	90.000	269.230	6813.00	5588.25	-134.42	-5586.71	40.4998528	-104.5168423	0.00	
12230.00†	90.000	269.230	6813.00	5688.25	-135.77	-5686.70	40.4998522	-104.5172019	0.00	
12330.00†	90.000	269.230	6813.00	5788.25	-137.11	-5786.69	40.4998515	-104.5175614	0.00	
12430.00†	90.000	269.230	6813.00	5888.25	-138.46	-5886.68	40.4998509	-104.5179210	0.00	
12530.00†	90.000	269.230	6813.00	5988.25	-139.80	-5986.67	40.4998502	-104.5182806	0.00	
12630.00†	90.000	269.230	6813.00	6088.24	-141.15	-6086.66	40.4998496	-104.5186401	0.00	
12730.00†	90.000	269.230	6813.00	6188.24	-142.49	-6186.65	40.4998489	-104.5189997	0.00	
12830.00†	90.000	269.230	6813.00	6288.24	-143.84	-6286.64	40.4998482	-104.5193593	0.00	
12930.00†	90.000	269.230	6813.00	6388.24	-145.18	-6386.64	40.4998476	-104.5197189	0.00	



Planned Wellpath Report

GABEL A10-645 (REV-A.0) PWP

Page 5 of 7



REFERENCE WELLPATH IDENTIFICATION			
Operator	NOBLE ENERGY, INC	Well	GABEL A10-645
Field	WELD COUNTY (NOBLE NAD 83 GRID)	API/Legal	
Facility	SEC.12-T06N-R64W	Wellbore	GABEL A10-645 PWB
Slot	SLOT#13 GABEL A10-645 (2357'FSL & 2209'FEL,SEC.12)		

WELLPATH DATA (179 stations) † = interpolated, ‡ = extrapolated station

MD [ft]	Inclination [°]	Azimuth [°]	TVD [ft]	Vert Sect [ft]	North [ft]	East [ft]	Latitude	Longitude	DLS [°/100ft]	Comments
13030.00†	90.000	269.230	6813.00	6488.24	-146.52	-6486.63	40.4998469	-104.5200784	0.00	
13130.00†	90.000	269.230	6813.00	6588.24	-147.87	-6586.62	40.4998463	-104.5204380	0.00	
13230.00†	90.000	269.230	6813.00	6688.23	-149.21	-6686.61	40.4998456	-104.5207976	0.00	
13330.00†	90.000	269.230	6813.00	6788.23	-150.56	-6786.60	40.4998450	-104.5211571	0.00	
13430.00†	90.000	269.230	6813.00	6888.23	-151.90	-6886.59	40.4998443	-104.5215167	0.00	
13530.00†	90.000	269.230	6813.00	6988.23	-153.25	-6986.58	40.4998436	-104.5218763	0.00	
13630.00†	90.000	269.230	6813.00	7088.23	-154.59	-7086.57	40.4998430	-104.5222358	0.00	
13730.00†	90.000	269.230	6813.00	7188.23	-155.94	-7186.56	40.4998423	-104.5225954	0.00	
13830.00†	90.000	269.230	6813.00	7288.23	-157.28	-7286.55	40.4998416	-104.5229550	0.00	
13930.00†	90.000	269.230	6813.00	7388.22	-158.62	-7386.54	40.4998410	-104.5233145	0.00	
14030.00†	90.000	269.230	6813.00	7488.22	-159.97	-7486.54	40.4998403	-104.5236741	0.00	
14130.00†	90.000	269.230	6813.00	7588.22	-161.31	-7586.53	40.4998396	-104.5240337	0.00	
14230.00†	90.000	269.230	6813.00	7688.22	-162.66	-7686.52	40.4998390	-104.5243932	0.00	
14330.00†	90.000	269.230	6813.00	7788.22	-164.00	-7786.51	40.4998383	-104.5247528	0.00	
14430.00†	90.000	269.230	6813.00	7888.22	-165.35	-7886.50	40.4998376	-104.5251124	0.00	
14530.00†	90.000	269.230	6813.00	7988.22	-166.69	-7986.49	40.4998369	-104.5254720	0.00	
14630.00†	90.000	269.230	6813.00	8088.21	-168.04	-8086.48	40.4998363	-104.5258315	0.00	
14730.00†	90.000	269.230	6813.00	8188.21	-169.38	-8186.47	40.4998356	-104.5261911	0.00	
14830.00†	90.000	269.230	6813.00	8288.21	-170.72	-8286.46	40.4998349	-104.5265507	0.00	
14930.00†	90.000	269.230	6813.00	8388.21	-172.07	-8386.45	40.4998342	-104.5269102	0.00	
15030.00†	90.000	269.230	6813.00	8488.21	-173.41	-8486.45	40.4998336	-104.5272698	0.00	
15130.00†	90.000	269.230	6813.00	8588.21	-174.76	-8586.44	40.4998329	-104.5276294	0.00	
15230.00†	90.000	269.230	6813.00	8688.20	-176.10	-8686.43	40.4998322	-104.5279889	0.00	
15330.00†	90.000	269.230	6813.00	8788.20	-177.45	-8786.42	40.4998315	-104.5283485	0.00	
15430.00†	90.000	269.230	6813.00	8888.20	-178.79	-8886.41	40.4998308	-104.5287081	0.00	
15530.00†	90.000	269.230	6813.00	8988.20	-180.14	-8986.40	40.4998302	-104.5290676	0.00	
15630.00†	90.000	269.230	6813.00	9088.20	-181.48	-9086.39	40.4998295	-104.5294272	0.00	
15730.00†	90.000	269.230	6813.00	9188.20	-182.82	-9186.38	40.4998288	-104.5297868	0.00	
15830.00†	90.000	269.230	6813.00	9288.20	-184.17	-9286.37	40.4998281	-104.5301463	0.00	
15930.00†	90.000	269.230	6813.00	9388.19	-185.51	-9386.36	40.4998274	-104.5305059	0.00	
16030.00†	90.000	269.230	6813.00	9488.19	-186.86	-9486.35	40.4998267	-104.5308655	0.00	
16130.00†	90.000	269.230	6813.00	9588.19	-188.20	-9586.35	40.4998260	-104.5312250	0.00	
16230.00†	90.000	269.230	6813.00	9688.19	-189.55	-9686.34	40.4998253	-104.5315846	0.00	
16330.00†	90.000	269.230	6813.00	9788.19	-190.89	-9786.33	40.4998246	-104.5319442	0.00	
16430.00†	90.000	269.230	6813.00	9888.19	-192.24	-9886.32	40.4998239	-104.5323038	0.00	
16530.00†	90.000	269.230	6813.00	9988.18	-193.58	-9986.31	40.4998232	-104.5326633	0.00	
16630.00†	90.000	269.230	6813.00	10088.18	-194.92	-10086.30	40.4998226	-104.5330229	0.00	
16730.00†	90.000	269.230	6813.00	10188.18	-196.27	-10186.29	40.4998219	-104.5333825	0.00	
16830.00†	90.000	269.230	6813.00	10288.18	-197.61	-10286.28	40.4998212	-104.5337420	0.00	
16930.00†	90.000	269.230	6813.00	10388.18	-198.96	-10386.27	40.4998205	-104.5341016	0.00	
17030.00†	90.000	269.230	6813.00	10488.18	-200.30	-10486.26	40.4998198	-104.5344612	0.00	
17130.00†	90.000	269.230	6813.00	10588.18	-201.65	-10586.26	40.4998191	-104.5348207	0.00	
17230.00†	90.000	269.230	6813.00	10688.17	-202.99	-10686.25	40.4998183	-104.5351803	0.00	
17318.77	90.000	269.230	6813.00 [‡]	10776.94	-204.18	-10775.01	40.4998177	-104.5354995	0.00	BHL

REFERENCE WELLPATH IDENTIFICATION			
Operator	NOBLE ENERGY, INC	Well	GABEL A10-645
Field	WELD COUNTY (NOBLE NAD 83 GRID)	API/Legal	
Facility	SEC.12-T06N-R64W	Wellbore	GABEL A10-645 PWB
Slot	SLOT#13 GABEL A10-645 (2357'FSL & 2209'FEL,SEC.12)		

HOLE & CASING SECTIONS - Ref Wellbore: GABEL A10-645 PWB Ref Wellpath: GABEL A10-645 (REV-A.0) PWP									
String/Diameter	Start MD [ft]	End MD [ft]	Interval [ft]	Start TVD [ft]	End TVD [ft]	Start N/S [ft]	Start E/W [ft]	End N/S [ft]	End E/W [ft]
9.625in Casing Surface	30.00	1950.00	1920.00	30.00	1950.00	0.00	0.00	0.00	0.00

TARGETS									
Name	MD [ft]	TVD [ft]	North [ft]	East [ft]	Grid East [US ft]	Grid North [US ft]	Latitude	Longitude	Shape
OGPD 2 SEC. 10-T06N-R64W	N/A	-9.00	2618.78	-74.13	3278923.07	1429205.68	40.5072400	-104.4969100	polygon
2D Polygon: dimensions not calculated									
OGPD 2 SEC. 11-T06N-R64W	N/A	-9.00	2618.78	-74.13	3278923.07	1429205.68	40.5072400	-104.4969100	polygon
2D Polygon: dimensions not calculated									
OGPD 2 SEC.12-T06N-R64W	N/A	-9.00	2618.78	-74.13	3278923.07	1429205.68	40.5072400	-104.4969100	polygon
2D Polygon: dimensions not calculated									
2) GABEL A10-645 BHL Rev-1 (2333'FSL & 2430'FEL,SEC.10)	17318.77	6813.00	-204.18	-10775.01	3268222.57	1426382.81	40.4998177	-104.5354995	point
1) GABEL A10-645 LP Rev-1 (2301'FSL & 2445'FWL,SEC.12)	7176.98	6813.00	-67.83	-634.14	3278363.08	1426519.16	40.4998835	-104.4990328	point

SURVEY PROGRAM - Ref Wellbore: GABEL A10-645 PWB Ref Wellpath: GABEL A10-645 (REV-A.0) PWP				
Start MD [ft]	End MD [ft]	Positional Uncertainty Model	Log Name/Comment	Wellbore
30.00	17318.77	OWSG MWD rev2 (MS+IFR1)		GABEL A10-645 PWB

REFERENCE WELLPATH IDENTIFICATION			
Operator	NOBLE ENERGY, INC	Well	GABEL A10-645
Field	WELD COUNTY (NOBLE NAD 83 GRID)	API/Legal	
Facility	SEC.12-T06N-R64W	Wellbore	GABEL A10-645 PWB
Slot	SLOT#13 GABEL A10-645 (2357'FSL & 2209'FEL,SEC.12)		

DESIGN COMMENTS				
MD [ft]	Inclination [°]	Azimuth [°]	TVD [ft]	Comment
30.00	0.000	177.218	30.00	SHL
3868.00	0.000	177.218	3868.00	End of Tangent
3926.29	1.166	177.218	3926.29	Build (XS)
6176.53	1.166	177.218	6176.06	KOP
7176.98	90.000	269.230	6813.00	LP/TPZ
17318.77	90.000	269.230	6813.00	BHL