

# NOBLE ENERGY, INC

Location: COLORADO Slot: SLOT#07 GABEL A12-657 (405'FNL & 2374'FEL, SEC.12)  
 Field: WELD COUNTY (NOBLE NAD 83 GRID) Well: GABEL A12-657  
 Facility: SEC.12-T06N-R64W Wellbore: GABEL A12-657 PWB

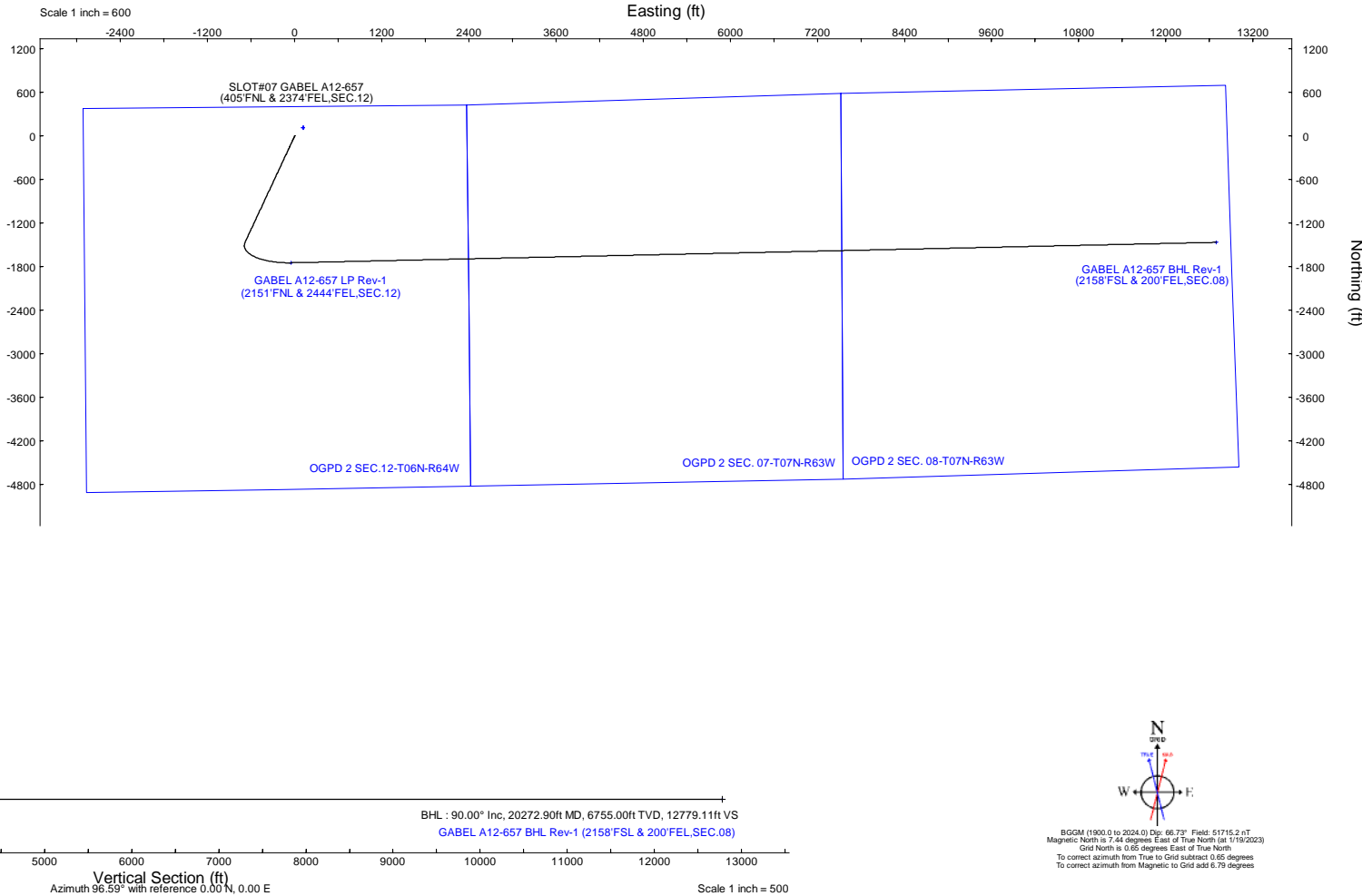
**Plot reference wellpath is GABEL A12-657 (REV-A.0) PWP**  
 True vertical depths are referenced to (4720'GL+30'KB@4750'RKB) (RKB)  
 Reference wellpath measured depths are referenced to (4720'GL+30'KB@4750'RKB) (RKB)  
 (4720'GL+30'KB@4750'RKB) (RKB) to Mean Sea Level: 4750 feet  
 Mean Sea Level to Ground level (At Slot: SLOT#07 GABEL A12-657 (405'FNL & 2374'FEL, SEC.12)): 0 feet  
 Offset wellpath MDs are referenced to each path's default MD datum  
 Grid System: NAD83 / Lambert Colorado SP, Northern Zone (501), US feet  
 North Reference: Grid north  
 Scale: True distance  
 Coordinates are in feet referenced to Slot  
 Depths are in feet  
 Created by: gualaler on 2023-01-20; Database: WA, Denver

Location Information			
Facility Name		Grid East (US ft)	Grid North (US ft)
SEC.12-T06N-R64W		3278923.071	1429205.676
Slot	Local N (ft)	Local E (ft)	Grid East (US ft)
SLOT#07 GABEL A12-657 (405'FNL & 2374'FEL, SEC.12)	-114.25	-115.51	3278907.566
(4720'GL+30'KB@4750'RKB) (RKB) to Ground level (At Slot: SLOT#07 GABEL A12-657 (405'FNL & 2374'FEL, SEC.12))			4750ft
Mean Sea Level to Ground level (At Slot: SLOT#07 GABEL A12-657 (405'FNL & 2374'FEL, SEC.12))			0ft
(4720'GL+30'KB@4750'RKB) (RKB) to Mean Sea Level			4750ft

Well Profile Data								
Design Comment	MD (ft)	Inc (°)	Az (°)	TVD (ft)	Local N (ft)	Local E (ft)	DLS (°/100ft)	VS (ft)
SHL	30.00	0.000	205.032	30.00	0.00	0.00	0.00	0.00
End of Tangent	2000.00	0.000	205.032	2000.00	0.00	0.00	0.00	0.00
End of Build (XS)	3267.70	25.354	205.032	3226.73	-250.02	-116.76	2.00	-87.29
KOP	6400.64	25.354	205.032	6057.90	-1465.57	-684.40	0.00	-511.70
LP/TPZ	7522.15	90.000	88.735	6755.00	-1747.83	-52.95	9.00	147.96
BHL	20272.90	90.000	88.735	6755.00	-1466.40	12694.70	0.00	12779.11

Targets								
Name	MD (ft)	TVD (ft)	Local N (ft)	Local E (ft)	Grid East (US ft)	Grid North (US ft)	Latitude	Longitude
OGPD 2 SEC. 07-T07N-R63W	N/A	-4.00	114.25	115.51	3278923.07	1429205.68	40°30'26.0640"N	104°29'48.8760"W
OGPD 2 SEC. 08-T07N-R63W	N/A	-4.00	114.25	115.51	3278923.07	1429205.68	40°30'26.0640"N	104°29'48.8760"W
OGPD 2 SEC. 12-T06N-R64W	N/A	-4.00	114.25	115.51	3278923.07	1429205.68	40°30'26.0640"N	104°29'48.8760"W
GABEL A12-657 BHL Rev-1 (2158'FSL & 200'FEL, SEC.08)	20272.90	6755.00	-1466.40	12694.70	3291501.82	1427625.08	40°30'9.0082"N	104°27'6.2799"W
GABEL A12-657 LP Rev-1 (2151'FNL & 2444'FEL, SEC.12)	7522.15	6755.00	-1747.83	-52.95	3278754.61	1427343.66	40°30'7.6830"N	104°29'51.3293"W

Survey Program					
Start MD (ft)	End MD (ft)	Tool	Model	Log Name/Comment	Wellbore
30.00	20272.90	OWSG MWD rev2	OWSG MWD rev2 (MS+IFR1)		GABEL A12-657 PWB





# Planned Wellpath Report

GABEL A12-657 (REV-A.0) PWP

Page 1 of 8



## REFERENCE WELLPATH IDENTIFICATION

Operator	NOBLE ENERGY, INC	Well	GABEL A12-657
Field	WELD COUNTY (NOBLE NAD 83 GRID)	API/Legal	
Facility	SEC.12-T06N-R64W	Wellbore	GABEL A12-657 PWB
Slot	SLOT#07 GABEL A12-657 (405'FNL & 2374'FEL,SEC.12)		

## REPORT SETUP INFORMATION

Projection System	NAD83 / Lambert Colorado SP, Northern Zone (501), US feet	Software System	WellArchitect® 6.0
North Reference	Grid	User	Guenaler
Scale	0.999967	Report Generated	1/20/2023 at 1:31:15 PM
Convergence at slot	0.65° East	Database	WA_Denver

## WELLPATH LOCATION

	Local coordinates		Grid coordinates		Geographic coordinates	
	North[ft]	East[ft]	Easting[US ft]	Northing[US ft]	Latitude	Longitude
Slot Location	-114.25	-115.51	3278807.57	1429091.43	40.5069300°	-104.4973300°
Facility Reference Pt			3278923.07	1429205.68	40.5072400°	-104.4969100°
Field Reference Pt			3000000.00	4454105.15	48.7761986°	-105.5000000°

## WELLPATH DATUM

Calculation method	Minimum curvature	(4720'GL+30'KB@4750'RKB) (RKB) to Facility Vertical Datum	4750.00ft
Horizontal Reference Pt	Slot	(4720'GL+30'KB@4750'RKB) (RKB) to Mean Sea Level	4750.00ft
Vertical Reference Pt	(4720'GL+30'KB@4750'RKB) (RKB)	(4720'GL+30'KB@4750'RKB) (RKB) to Ground Level at Slot (SLOT#07 GABEL A12-657 (405'FNL & 2374'FEL,SEC.12))	4750.00ft
MD Reference Pt	(4720'GL+30'KB@4750'RKB) (RKB)	Section Origin	N 0.00, E 0.00 ft
Field Vertical Reference	Mean Sea Level	Section Azimuth	96.59°



# Planned Wellpath Report

GABEL A12-657 (REV-A.0) PWP

Page 2 of 8



## REFERENCE WELLPATH IDENTIFICATION

Operator	NOBLE ENERGY, INC	Well	GABEL A12-657
Field	WELD COUNTY (NOBLE NAD 83 GRID)	API/Legal	
Facility	SEC.12-T06N-R64W	Wellbore	GABEL A12-657 PWB
Slot	SLOT#07 GABEL A12-657 (405'FNL & 2374'FEL,SEC.12)		

## WELLPATH DATA (209 stations) † = interpolated, ‡ = extrapolated station

MD [ft]	Inclination [°]	Azimuth [°]	TVD [ft]	Vert Sect [ft]	North [ft]	East [ft]	Latitude	Longitude	DLS [°/100ft]	Comments
0.00†	0.000	205.032	0.00	0.00	0.00	0.00	40.5069300	-104.4973300	0.00	
30.00	0.000	205.032	30.00	0.00	0.00	0.00	40.5069300	-104.4973300	0.00	SHL
130.00†	0.000	205.032	130.00	0.00	0.00	0.00	40.5069300	-104.4973300	0.00	
230.00†	0.000	205.032	230.00	0.00	0.00	0.00	40.5069300	-104.4973300	0.00	
330.00†	0.000	205.032	330.00	0.00	0.00	0.00	40.5069300	-104.4973300	0.00	
430.00†	0.000	205.032	430.00	0.00	0.00	0.00	40.5069300	-104.4973300	0.00	
530.00†	0.000	205.032	530.00	0.00	0.00	0.00	40.5069300	-104.4973300	0.00	
630.00†	0.000	205.032	630.00	0.00	0.00	0.00	40.5069300	-104.4973300	0.00	
730.00†	0.000	205.032	730.00	0.00	0.00	0.00	40.5069300	-104.4973300	0.00	
830.00†	0.000	205.032	830.00	0.00	0.00	0.00	40.5069300	-104.4973300	0.00	
930.00†	0.000	205.032	930.00	0.00	0.00	0.00	40.5069300	-104.4973300	0.00	
1030.00†	0.000	205.032	1030.00	0.00	0.00	0.00	40.5069300	-104.4973300	0.00	
1130.00†	0.000	205.032	1130.00	0.00	0.00	0.00	40.5069300	-104.4973300	0.00	
1230.00†	0.000	205.032	1230.00	0.00	0.00	0.00	40.5069300	-104.4973300	0.00	
1330.00†	0.000	205.032	1330.00	0.00	0.00	0.00	40.5069300	-104.4973300	0.00	
1430.00†	0.000	205.032	1430.00	0.00	0.00	0.00	40.5069300	-104.4973300	0.00	
1530.00†	0.000	205.032	1530.00	0.00	0.00	0.00	40.5069300	-104.4973300	0.00	
1630.00†	0.000	205.032	1630.00	0.00	0.00	0.00	40.5069300	-104.4973300	0.00	
1730.00†	0.000	205.032	1730.00	0.00	0.00	0.00	40.5069300	-104.4973300	0.00	
1830.00†	0.000	205.032	1830.00	0.00	0.00	0.00	40.5069300	-104.4973300	0.00	
1930.00†	0.000	205.032	1930.00	0.00	0.00	0.00	40.5069300	-104.4973300	0.00	
2000.00	0.000	205.032	2000.00	0.00	0.00	0.00	40.5069300	-104.4973300	0.00	End of Tangent
2030.00†	0.600	205.032	2030.00	-0.05	-0.14	-0.07	40.5069296	-104.4973302	2.00	
2130.00†	2.600	205.032	2129.96	-0.93	-2.67	-1.25	40.5069227	-104.4973346	2.00	
2230.00†	4.600	205.032	2229.75	-2.92	-8.36	-3.90	40.5069072	-104.4973444	2.00	
2330.00†	6.600	205.032	2329.27	-6.01	-17.20	-8.03	40.5068830	-104.4973596	2.00	
2430.00†	8.600	205.032	2428.39	-10.19	-29.19	-13.63	40.5068503	-104.4973802	2.00	
2530.00†	10.600	205.032	2526.98	-15.47	-44.29	-20.69	40.5068091	-104.4974062	2.00	
2630.00†	12.600	205.032	2624.93	-21.83	-62.51	-29.19	40.5067593	-104.4974375	2.00	
2730.00†	14.600	205.032	2722.13	-29.26	-83.82	-39.14	40.5067012	-104.4974742	2.00	
2830.00†	16.600	205.032	2818.44	-37.77	-108.18	-50.52	40.5066346	-104.4975161	2.00	
2930.00†	18.600	205.032	2913.75	-47.34	-135.58	-63.31	40.5065598	-104.4975632	2.00	
3030.00†	20.600	205.032	3007.95	-57.95	-165.97	-77.51	40.5064769	-104.4976154	2.00	
3130.00†	22.600	205.032	3100.93	-69.59	-199.32	-93.08	40.5063858	-104.4976728	2.00	
3230.00†	24.600	205.032	3192.56	-82.26	-235.60	-110.02	40.5062868	-104.4977352	2.00	
3267.70	25.354	205.032	3226.73	-87.29	-250.02	-116.76	40.5062474	-104.4977600	2.00	Build (XS)
3330.00†	25.354	205.032	3283.03	-95.73	-274.19	-128.04	40.5061814	-104.4978016	0.00	
3430.00†	25.354	205.032	3373.40	-109.28	-312.99	-146.16	40.5060755	-104.4978683	0.00	
3530.00†	25.354	205.032	3463.77	-122.83	-351.79	-164.28	40.5059695	-104.4979350	0.00	
3630.00†	25.354	205.032	3554.13	-136.37	-390.59	-182.40	40.5058636	-104.4980018	0.00	
3730.00†	25.354	205.032	3644.50	-149.92	-429.39	-200.52	40.5057577	-104.4980685	0.00	
3830.00†	25.354	205.032	3734.87	-163.47	-468.19	-218.64	40.5056518	-104.4981352	0.00	
3930.00†	25.354	205.032	3825.24	-177.01	-506.99	-236.75	40.5055458	-104.4982019	0.00	
4030.00†	25.354	205.032	3915.61	-190.56	-545.78	-254.87	40.5054399	-104.4982687	0.00	
4130.00†	25.354	205.032	4005.97	-204.11	-584.58	-272.99	40.5053340	-104.4983354	0.00	



# Planned Wellpath Report

GABEL A12-657 (REV-A.0) PWP

Page 3 of 8



## REFERENCE WELLPATH IDENTIFICATION

Operator	NOBLE ENERGY, INC	Well	GABEL A12-657
Field	WELD COUNTY (NOBLE NAD 83 GRID)	API/Legal	
Facility	SEC.12-T06N-R64W	Wellbore	GABEL A12-657 PWB
Slot	SLOT#07 GABEL A12-657 (405'FNL & 2374'FEL,SEC.12)		

## WELLPATH DATA (209 stations) † = interpolated, ‡ = extrapolated station

MD [ft]	Inclination [°]	Azimuth [°]	TVD [ft]	Vert Sect [ft]	North [ft]	East [ft]	Latitude	Longitude	DLS [°/100ft]	Comments
4230.00†	25.354	205.032	4096.34	-217.65	-623.38	-291.11	40.5052281	-104.4984021	0.00	
4330.00†	25.354	205.032	4186.71	-231.20	-662.18	-309.23	40.5051221	-104.4984688	0.00	
4430.00†	25.354	205.032	4277.08	-244.75	-700.98	-327.35	40.5050162	-104.4985356	0.00	
4530.00†	25.354	205.032	4367.45	-258.29	-739.78	-345.47	40.5049103	-104.4986023	0.00	
4630.00†	25.354	205.032	4457.81	-271.84	-778.58	-363.58	40.5048043	-104.4986690	0.00	
4730.00†	25.354	205.032	4548.18	-285.39	-817.38	-381.70	40.5046984	-104.4987357	0.00	
4830.00†	25.354	205.032	4638.55	-298.93	-856.18	-399.82	40.5045925	-104.4988025	0.00	
4930.00†	25.354	205.032	4728.92	-312.48	-894.97	-417.94	40.5044865	-104.4988692	0.00	
5030.00†	25.354	205.032	4819.28	-326.03	-933.77	-436.06	40.5043806	-104.4989359	0.00	
5130.00†	25.354	205.032	4909.65	-339.57	-972.57	-454.18	40.5042747	-104.4990026	0.00	
5230.00†	25.354	205.032	5000.02	-353.12	-1011.37	-472.30	40.5041688	-104.4990694	0.00	
5330.00†	25.354	205.032	5090.39	-366.67	-1050.17	-490.41	40.5040628	-104.4991361	0.00	
5430.00†	25.354	205.032	5180.76	-380.21	-1088.97	-508.53	40.5039569	-104.4992028	0.00	
5530.00†	25.354	205.032	5271.12	-393.76	-1127.77	-526.65	40.5038510	-104.4992695	0.00	
5630.00†	25.354	205.032	5361.49	-407.31	-1166.57	-544.77	40.5037450	-104.4993362	0.00	
5730.00†	25.354	205.032	5451.86	-420.85	-1205.37	-562.89	40.5036391	-104.4994030	0.00	
5830.00†	25.354	205.032	5542.23	-434.40	-1244.16	-581.01	40.5035332	-104.4994697	0.00	
5930.00†	25.354	205.032	5632.60	-447.95	-1282.96	-599.13	40.5034273	-104.4995364	0.00	
6030.00†	25.354	205.032	5722.96	-461.49	-1321.76	-617.24	40.5033213	-104.4996031	0.00	
6130.00†	25.354	205.032	5813.33	-475.04	-1360.56	-635.36	40.5032154	-104.4996699	0.00	
6230.00†	25.354	205.032	5903.70	-488.59	-1399.36	-653.48	40.5031095	-104.4997366	0.00	
6330.00†	25.354	205.032	5994.07	-502.13	-1438.16	-671.60	40.5030035	-104.4998033	0.00	
6400.64	25.354	205.032	6057.90	-511.70	-1465.57	-684.40	40.5029287	-104.4998504	0.00	KOP
6430.00†	24.388	199.181	6084.54	-515.01	-1476.99	-689.05	40.5028975	-104.4998676	9.00	
6530.00†	23.027	176.928	6176.29	-516.24	-1516.10	-694.80	40.5027903	-104.4998899	9.00	
6630.00†	24.877	155.106	6267.85	-501.94	-1554.79	-684.87	40.5026838	-104.4998558	9.00	
6730.00†	29.335	137.842	6356.99	-472.48	-1592.10	-659.53	40.5025806	-104.4997661	9.00	
6830.00†	35.427	125.404	6441.49	-428.58	-1627.12	-619.38	40.5024833	-104.4996232	9.00	
6930.00†	42.449	116.409	6519.29	-371.32	-1658.99	-565.42	40.5023941	-104.4994305	9.00	
7030.00†	50.004	109.615	6588.46	-302.11	-1686.92	-498.98	40.5023154	-104.4991927	9.00	
7130.00†	57.875	104.206	6647.31	-222.66	-1710.21	-421.69	40.5022491	-104.4989158	9.00	
7230.00†	65.939	99.669	6694.38	-134.91	-1728.31	-335.45	40.5021968	-104.4986064	9.00	
7330.00†	74.122	95.676	6728.51	-41.05	-1740.76	-242.40	40.5021597	-104.4982723	9.00	
7430.00†	82.371	91.997	6748.87	56.64	-1747.26	-144.81	40.5021388	-104.4979217	9.00	
7522.15	90.000	88.735	6755.00†	147.96	-1747.83	-52.95	40.5021344	-104.4975915	9.00	LP/TPZ
7530.00†	90.000	88.735	6755.00	155.74	-1747.66	-45.10	40.5021346	-104.4975632	0.00	
7630.00†	90.000	88.735	6755.00	254.80	-1745.45	54.87	40.5021376	-104.4972037	0.00	
7730.00†	90.000	88.735	6755.00	353.86	-1743.25	154.85	40.5021406	-104.4968441	0.00	
7830.00†	90.000	88.735	6755.00	452.92	-1741.04	254.82	40.5021435	-104.4964845	0.00	
7930.00†	90.000	88.735	6755.00	551.99	-1738.83	354.80	40.5021465	-104.4961250	0.00	
8030.00†	90.000	88.735	6755.00	651.05	-1736.62	454.78	40.5021494	-104.4957654	0.00	
8130.00†	90.000	88.735	6755.00	750.11	-1734.42	554.75	40.5021524	-104.4954059	0.00	
8230.00†	90.000	88.735	6755.00	849.17	-1732.21	654.73	40.5021553	-104.4950463	0.00	
8330.00†	90.000	88.735	6755.00	948.23	-1730.00	754.70	40.5021583	-104.4946867	0.00	
8430.00†	90.000	88.735	6755.00	1047.30	-1727.80	854.68	40.5021612	-104.4943272	0.00	



# Planned Wellpath Report

GABEL A12-657 (REV-A.0) PWP  
Page 4 of 8



REFERENCE WELLPATH IDENTIFICATION			
Operator	NOBLE ENERGY, INC	Well	GABEL A12-657
Field	WELD COUNTY (NOBLE NAD 83 GRID)	API/Legal	
Facility	SEC.12-T06N-R64W	Wellbore	GABEL A12-657 PWB
Slot	SLOT#07 GABEL A12-657 (405'FNL & 2374'FEL,SEC.12)		

WELLPATH DATA (209 stations) † = interpolated, ‡ = extrapolated station										
MD [ft]	Inclination [°]	Azimuth [°]	TVD [ft]	Vert Sect [ft]	North [ft]	East [ft]	Latitude	Longitude	DLS [°/100ft]	Comments
8530.00†	90.000	88.735	6755.00	1146.36	-1725.59	954.65	40.5021641	-104.4939676	0.00	
8630.00†	90.000	88.735	6755.00	1245.42	-1723.38	1054.63	40.5021671	-104.4936081	0.00	
8730.00†	90.000	88.735	6755.00	1344.48	-1721.17	1154.60	40.5021700	-104.4932485	0.00	
8830.00†	90.000	88.735	6755.00	1443.54	-1718.97	1254.58	40.5021730	-104.4928889	0.00	
8930.00†	90.000	88.735	6755.00	1542.61	-1716.76	1354.56	40.5021759	-104.4925294	0.00	
9030.00†	90.000	88.735	6755.00	1641.67	-1714.55	1454.53	40.5021789	-104.4921698	0.00	
9130.00†	90.000	88.735	6755.00	1740.73	-1712.35	1554.51	40.5021818	-104.4918102	0.00	
9230.00†	90.000	88.735	6755.00	1839.79	-1710.14	1654.48	40.5021847	-104.4914507	0.00	
9330.00†	90.000	88.735	6755.00	1938.85	-1707.93	1754.46	40.5021877	-104.4910911	0.00	
9430.00†	90.000	88.735	6755.00	2037.92	-1705.72	1854.43	40.5021906	-104.4907316	0.00	
9530.00†	90.000	88.735	6755.00	2136.98	-1703.52	1954.41	40.5021935	-104.4903720	0.00	
9630.00†	90.000	88.735	6755.00	2236.04	-1701.31	2054.39	40.5021965	-104.4900124	0.00	
9730.00†	90.000	88.735	6755.00	2335.10	-1699.10	2154.36	40.5021994	-104.4896529	0.00	
9830.00†	90.000	88.735	6755.00	2434.16	-1696.89	2254.34	40.5022023	-104.4892933	0.00	
9930.00†	90.000	88.735	6755.00	2533.23	-1694.69	2354.31	40.5022053	-104.4889337	0.00	
10030.00†	90.000	88.735	6755.00	2632.29	-1692.48	2454.29	40.5022082	-104.4885742	0.00	
10130.00†	90.000	88.735	6755.00	2731.35	-1690.27	2554.26	40.5022111	-104.4882146	0.00	
10230.00†	90.000	88.735	6755.00	2830.41	-1688.07	2654.24	40.5022140	-104.4878551	0.00	
10330.00†	90.000	88.735	6755.00	2929.47	-1685.86	2754.22	40.5022170	-104.4874955	0.00	
10430.00†	90.000	88.735	6755.00	3028.54	-1683.65	2854.19	40.5022199	-104.4871359	0.00	
10530.00†	90.000	88.735	6755.00	3127.60	-1681.44	2954.17	40.5022228	-104.4867764	0.00	
10630.00†	90.000	88.735	6755.00	3226.66	-1679.24	3054.14	40.5022257	-104.4864168	0.00	
10730.00†	90.000	88.735	6755.00	3325.72	-1677.03	3154.12	40.5022287	-104.4860572	0.00	
10830.00†	90.000	88.735	6755.00	3424.78	-1674.82	3254.09	40.5022316	-104.4856977	0.00	
10930.00†	90.000	88.735	6755.00	3523.85	-1672.62	3354.07	40.5022345	-104.4853381	0.00	
11030.00†	90.000	88.735	6755.00	3622.91	-1670.41	3454.04	40.5022374	-104.4849786	0.00	
11130.00†	90.000	88.735	6755.00	3721.97	-1668.20	3554.02	40.5022403	-104.4846190	0.00	
11230.00†	90.000	88.735	6755.00	3821.03	-1665.99	3654.00	40.5022432	-104.4842594	0.00	
11330.00†	90.000	88.735	6755.00	3920.09	-1663.79	3753.97	40.5022462	-104.4838999	0.00	
11430.00†	90.000	88.735	6755.00	4019.16	-1661.58	3853.95	40.5022491	-104.4835403	0.00	
11530.00†	90.000	88.735	6755.00	4118.22	-1659.37	3953.92	40.5022520	-104.4831807	0.00	
11630.00†	90.000	88.735	6755.00	4217.28	-1657.17	4053.90	40.5022549	-104.4828212	0.00	
11730.00†	90.000	88.735	6755.00	4316.34	-1654.96	4153.87	40.5022578	-104.4824616	0.00	
11830.00†	90.000	88.735	6755.00	4415.40	-1652.75	4253.85	40.5022607	-104.4821021	0.00	
11930.00†	90.000	88.735	6755.00	4514.47	-1650.54	4353.83	40.5022636	-104.4817425	0.00	
12030.00†	90.000	88.735	6755.00	4613.53	-1648.34	4453.80	40.5022665	-104.4813829	0.00	
12130.00†	90.000	88.735	6755.00	4712.59	-1646.13	4553.78	40.5022694	-104.4810234	0.00	
12230.00†	90.000	88.735	6755.00	4811.65	-1643.92	4653.75	40.5022723	-104.4806638	0.00	
12330.00†	90.000	88.735	6755.00	4910.71	-1641.72	4753.73	40.5022752	-104.4803042	0.00	
12430.00†	90.000	88.735	6755.00	5009.78	-1639.51	4853.70	40.5022781	-104.4799447	0.00	
12530.00†	90.000	88.735	6755.00	5108.84	-1637.30	4953.68	40.5022810	-104.4795851	0.00	
12630.00†	90.000	88.735	6755.00	5207.90	-1635.09	5053.65	40.5022839	-104.4792256	0.00	
12730.00†	90.000	88.735	6755.00	5306.96	-1632.89	5153.63	40.5022868	-104.4788660	0.00	
12830.00†	90.000	88.735	6755.00	5406.02	-1630.68	5253.61	40.5022897	-104.4785064	0.00	
12930.00†	90.000	88.735	6755.00	5505.08	-1628.47	5353.58	40.5022926	-104.4781469	0.00	



# Planned Wellpath Report

GABEL A12-657 (REV-A.0) PWP  
Page 5 of 8



REFERENCE WELLPATH IDENTIFICATION			
Operator	NOBLE ENERGY, INC	Well	GABEL A12-657
Field	WELD COUNTY (NOBLE NAD 83 GRID)	API/Legal	
Facility	SEC.12-T06N-R64W	Wellbore	GABEL A12-657 PWB
Slot	SLOT#07 GABEL A12-657 (405'FNL & 2374'FEL,SEC.12)		

WELLPATH DATA (209 stations) † = interpolated, ‡ = extrapolated station										
MD [ft]	Inclination [°]	Azimuth [°]	TVD [ft]	Vert Sect [ft]	North [ft]	East [ft]	Latitude	Longitude	DLS [°/100ft]	Comments
13030.00†	90.000	88.735	6755.00	5604.15	-1626.26	5453.56	40.5022955	-104.4777873	0.00	
13130.00†	90.000	88.735	6755.00	5703.21	-1624.06	5553.53	40.5022984	-104.4774277	0.00	
13230.00†	90.000	88.735	6755.00	5802.27	-1621.85	5653.51	40.5023013	-104.4770682	0.00	
13330.00†	90.000	88.735	6755.00	5901.33	-1619.64	5753.48	40.5023042	-104.4767086	0.00	
13430.00†	90.000	88.735	6755.00	6000.39	-1617.44	5853.46	40.5023071	-104.4763491	0.00	
13530.00†	90.000	88.735	6755.00	6099.46	-1615.23	5953.44	40.5023100	-104.4759895	0.00	
13630.00†	90.000	88.735	6755.00	6198.52	-1613.02	6053.41	40.5023129	-104.4756299	0.00	
13730.00†	90.000	88.735	6755.00	6297.58	-1610.81	6153.39	40.5023158	-104.4752704	0.00	
13830.00†	90.000	88.735	6755.00	6396.64	-1608.61	6253.36	40.5023187	-104.4749108	0.00	
13930.00†	90.000	88.735	6755.00	6495.70	-1606.40	6353.34	40.5023215	-104.4745512	0.00	
14030.00†	90.000	88.735	6755.00	6594.77	-1604.19	6453.31	40.5023244	-104.4741917	0.00	
14130.00†	90.000	88.735	6755.00	6693.83	-1601.99	6553.29	40.5023273	-104.4738321	0.00	
14230.00†	90.000	88.735	6755.00	6792.89	-1599.78	6653.26	40.5023302	-104.4734725	0.00	
14330.00†	90.000	88.735	6755.00	6891.95	-1597.57	6753.24	40.5023331	-104.4731130	0.00	
14430.00†	90.000	88.735	6755.00	6991.01	-1595.36	6853.22	40.5023359	-104.4727534	0.00	
14530.00†	90.000	88.735	6755.00	7090.08	-1593.16	6953.19	40.5023388	-104.4723939	0.00	
14630.00†	90.000	88.735	6755.00	7189.14	-1590.95	7053.17	40.5023417	-104.4720343	0.00	
14730.00†	90.000	88.735	6755.00	7288.20	-1588.74	7153.14	40.5023446	-104.4716747	0.00	
14830.00†	90.000	88.735	6755.00	7387.26	-1586.54	7253.12	40.5023475	-104.4713152	0.00	
14930.00†	90.000	88.735	6755.00	7486.32	-1584.33	7353.09	40.5023503	-104.4709556	0.00	
15030.00†	90.000	88.735	6755.00	7585.39	-1582.12	7453.07	40.5023532	-104.4705960	0.00	
15130.00†	90.000	88.735	6755.00	7684.45	-1579.91	7553.05	40.5023561	-104.4702365	0.00	
15230.00†	90.000	88.735	6755.00	7783.51	-1577.71	7653.02	40.5023589	-104.4698769	0.00	
15330.00†	90.000	88.735	6755.00	7882.57	-1575.50	7753.00	40.5023618	-104.4695173	0.00	
15430.00†	90.000	88.735	6755.00	7981.63	-1573.29	7852.97	40.5023647	-104.4691578	0.00	
15530.00†	90.000	88.735	6755.00	8080.70	-1571.08	7952.95	40.5023676	-104.4687982	0.00	
15630.00†	90.000	88.735	6755.00	8179.76	-1568.88	8052.92	40.5023704	-104.4684387	0.00	
15730.00†	90.000	88.735	6755.00	8278.82	-1566.67	8152.90	40.5023733	-104.4680791	0.00	
15830.00†	90.000	88.735	6755.00	8377.88	-1564.46	8252.88	40.5023761	-104.4677195	0.00	
15930.00†	90.000	88.735	6755.00	8476.94	-1562.26	8352.85	40.5023790	-104.4673600	0.00	
16030.00†	90.000	88.735	6755.00	8576.01	-1560.05	8452.83	40.5023819	-104.4670004	0.00	
16130.00†	90.000	88.735	6755.00	8675.07	-1557.84	8552.80	40.5023847	-104.4666408	0.00	
16230.00†	90.000	88.735	6755.00	8774.13	-1555.63	8652.78	40.5023876	-104.4662813	0.00	
16330.00†	90.000	88.735	6755.00	8873.19	-1553.43	8752.75	40.5023905	-104.4659217	0.00	
16430.00†	90.000	88.735	6755.00	8972.25	-1551.22	8852.73	40.5023933	-104.4655621	0.00	
16530.00†	90.000	88.735	6755.00	9071.32	-1549.01	8952.70	40.5023962	-104.4652026	0.00	
16630.00†	90.000	88.735	6755.00	9170.38	-1546.81	9052.68	40.5023990	-104.4648430	0.00	
16730.00†	90.000	88.735	6755.00	9269.44	-1544.60	9152.66	40.5024019	-104.4644835	0.00	
16830.00†	90.000	88.735	6755.00	9368.50	-1542.39	9252.63	40.5024047	-104.4641239	0.00	
16930.00†	90.000	88.735	6755.00	9467.56	-1540.18	9352.61	40.5024076	-104.4637643	0.00	
17030.00†	90.000	88.735	6755.00	9566.63	-1537.98	9452.58	40.5024104	-104.4634048	0.00	
17130.00†	90.000	88.735	6755.00	9665.69	-1535.77	9552.56	40.5024133	-104.4630452	0.00	
17230.00†	90.000	88.735	6755.00	9764.75	-1533.56	9652.53	40.5024161	-104.4626856	0.00	
17330.00†	90.000	88.735	6755.00	9863.81	-1531.36	9752.51	40.5024190	-104.4623261	0.00	
17430.00†	90.000	88.735	6755.00	9962.87	-1529.15	9852.49	40.5024218	-104.4619665	0.00	



# Planned Wellpath Report

GABEL A12-657 (REV-A.0) PWP  
Page 6 of 8



REFERENCE WELLPATH IDENTIFICATION			
Operator	NOBLE ENERGY, INC	Well	GABEL A12-657
Field	WELD COUNTY (NOBLE NAD 83 GRID)	API/Legal	
Facility	SEC.12-T06N-R64W	Wellbore	GABEL A12-657 PWB
Slot	SLOT#07 GABEL A12-657 (405'FNL & 2374'FEL,SEC.12)		

WELLPATH DATA (209 stations) † = interpolated, ‡ = extrapolated station										
---	--	--	--	--	--	--	--	--	--	--

MD [ft]	Inclination [°]	Azimuth [°]	TVD [ft]	Vert Sect [ft]	North [ft]	East [ft]	Latitude	Longitude	DLS [°/100ft]	Comments
17530.00†	90.000	88.735	6755.00	10061.94	-1526.94	9952.46	40.5024247	-104.4616069	0.00	
17630.00†	90.000	88.735	6755.00	10161.00	-1524.73	10052.44	40.5024275	-104.4612474	0.00	
17730.00†	90.000	88.735	6755.00	10260.06	-1522.53	10152.41	40.5024304	-104.4608878	0.00	
17830.00†	90.000	88.735	6755.00	10359.12	-1520.32	10252.39	40.5024332	-104.4605282	0.00	
17930.00†	90.000	88.735	6755.00	10458.18	-1518.11	10352.36	40.5024360	-104.4601687	0.00	
18030.00†	90.000	88.735	6755.00	10557.25	-1515.90	10452.34	40.5024389	-104.4598091	0.00	
18130.00†	90.000	88.735	6755.00	10656.31	-1513.70	10552.31	40.5024417	-104.4594496	0.00	
18230.00†	90.000	88.735	6755.00	10755.37	-1511.49	10652.29	40.5024446	-104.4590900	0.00	
18330.00†	90.000	88.735	6755.00	10854.43	-1509.28	10752.27	40.5024474	-104.4587304	0.00	
18430.00†	90.000	88.735	6755.00	10953.49	-1507.08	10852.24	40.5024502	-104.4583709	0.00	
18530.00†	90.000	88.735	6755.00	11052.56	-1504.87	10952.22	40.5024531	-104.4580113	0.00	
18630.00†	90.000	88.735	6755.00	11151.62	-1502.66	11052.19	40.5024559	-104.4576517	0.00	
18730.00†	90.000	88.735	6755.00	11250.68	-1500.45	11152.17	40.5024587	-104.4572922	0.00	
18830.00†	90.000	88.735	6755.00	11349.74	-1498.25	11252.14	40.5024616	-104.4569326	0.00	
18930.00†	90.000	88.735	6755.00	11448.80	-1496.04	11352.12	40.5024644	-104.4565730	0.00	
19030.00†	90.000	88.735	6755.00	11547.86	-1493.83	11452.10	40.5024672	-104.4562135	0.00	
19130.00†	90.000	88.735	6755.00	11646.93	-1491.63	11552.07	40.5024700	-104.4558539	0.00	
19230.00†	90.000	88.735	6755.00	11745.99	-1489.42	11652.05	40.5024729	-104.4554943	0.00	
19330.00†	90.000	88.735	6755.00	11845.05	-1487.21	11752.02	40.5024757	-104.4551348	0.00	
19430.00†	90.000	88.735	6755.00	11944.11	-1485.00	11852.00	40.5024785	-104.4547752	0.00	
19530.00†	90.000	88.735	6755.00	12043.17	-1482.80	11951.97	40.5024813	-104.4544156	0.00	
19630.00†	90.000	88.735	6755.00	12142.24	-1480.59	12051.95	40.5024842	-104.4540561	0.00	
19730.00†	90.000	88.735	6755.00	12241.30	-1478.38	12151.93	40.5024870	-104.4536965	0.00	
19830.00†	90.000	88.735	6755.00	12340.36	-1476.18	12251.90	40.5024898	-104.4533369	0.00	
19930.00†	90.000	88.735	6755.00	12439.42	-1473.97	12351.88	40.5024926	-104.4529774	0.00	
20030.00†	90.000	88.735	6755.00	12538.48	-1471.76	12451.85	40.5024954	-104.4526178	0.00	
20130.00†	90.000	88.735	6755.00	12637.55	-1469.55	12551.83	40.5024982	-104.4522583	0.00	
20230.00†	90.000	88.735	6755.00	12736.61	-1467.35	12651.80	40.5025011	-104.4518987	0.00	
20272.90	90.000	88.735	6755.00 <sup>2</sup>	12779.11	-1466.40	12694.70	40.5025023	-104.4517444	0.00	BHL

HOLE & CASING SECTIONS - Ref Wellbore: GABEL A12-657 PWB Ref Wellpath: GABEL A12-657 (REV-A.0) PWP									
--	--	--	--	--	--	--	--	--	--

String/Diameter	Start MD [ft]	End MD [ft]	Interval [ft]	Start TVD [ft]	End TVD [ft]	Start N/S [ft]	Start E/W [ft]	End N/S [ft]	End E/W [ft]
9.625in Casing Surface	30.00	1950.00	1920.00	30.00	1950.00	0.00	0.00	0.00	0.00



# Planned Wellpath Report

GABEL A12-657 (REV-A.0) PWP  
Page 7 of 8



REFERENCE WELLPATH IDENTIFICATION			
Operator	NOBLE ENERGY, INC	Well	GABEL A12-657
Field	WELD COUNTY (NOBLE NAD 83 GRID)	API/Legal	
Facility	SEC.12-T06N-R64W	Wellbore	GABEL A12-657 PWB
Slot	SLOT#07 GABEL A12-657 (405'FNL & 2374'FEL,SEC.12)		

TARGETS									
Name	MD [ft]	TVD [ft]	North [ft]	East [ft]	Grid East [US ft]	Grid North [US ft]	Latitude	Longitude	Shape
OGPD 2 SEC. 07-T07N-R63W	N/A	-4.00	114.25	115.51	3278923.07	1429205.68	40.5072400	-104.4969100	polygon
	2D Polygon: dimensions not calculated								
OGPD 2 SEC. 08-T07N-R63W	N/A	-4.00	114.25	115.51	3278923.07	1429205.68	40.5072400	-104.4969100	polygon
	2D Polygon: dimensions not calculated								
OGPD 2 SEC.12-T06N-R64W	N/A	-4.00	114.25	115.51	3278923.07	1429205.68	40.5072400	-104.4969100	polygon
	2D Polygon: dimensions not calculated								
2) GABEL A12-657 BHL Rev-1 (2158'FSL & 200'FEL,SEC.08)	20272.90	6755.00	-1466.40	12694.70	3291501.82	1427625.08	40.5025023	-104.4517444	point
1) GABEL A12-657 LP Rev-1 (2151'FNL & 2444'FEL,SEC.12)	7522.15	6755.00	-1747.83	-52.95	3278754.61	1427343.66	40.5021344	-104.4975915	point

SURVEY PROGRAM - Ref Wellbore: GABEL A12-657 PWB    Ref Wellpath: GABEL A12-657 (REV-A.0) PWP				
Start MD [ft]	End MD [ft]	Positional Uncertainty Model	Log Name/Comment	Wellbore
30.00	20272.90	OWSG MWD rev2 (MS+IFR1)		GABEL A12-657 PWB



# Planned Wellpath Report

GABEL A12-657 (REV-A.0) PWP

Page 8 of 8



REFERENCE WELLPATH IDENTIFICATION			
Operator	NOBLE ENERGY, INC	Well	GABEL A12-657
Field	WELD COUNTY (NOBLE NAD 83 GRID)	API/Legal	
Facility	SEC.12-T06N-R64W	Wellbore	GABEL A12-657 PWB
Slot	SLOT#07 GABEL A12-657 (405'FNL & 2374'FEL,SEC.12)		

DESIGN COMMENTS				
MD [ft]	Inclination [°]	Azimuth [°]	TVD [ft]	Comment
30.00	0.000	205.032	30.00	SHL
2000.00	0.000	205.032	2000.00	End of Tangent
3267.70	25.354	205.032	3226.73	Build (XS)
6400.64	25.354	205.032	6057.90	KOP
7522.15	90.000	88.735	6755.00	LP/TPZ
20272.90	90.000	88.735	6755.00	BHL