

NOBLE ENERGY, INC

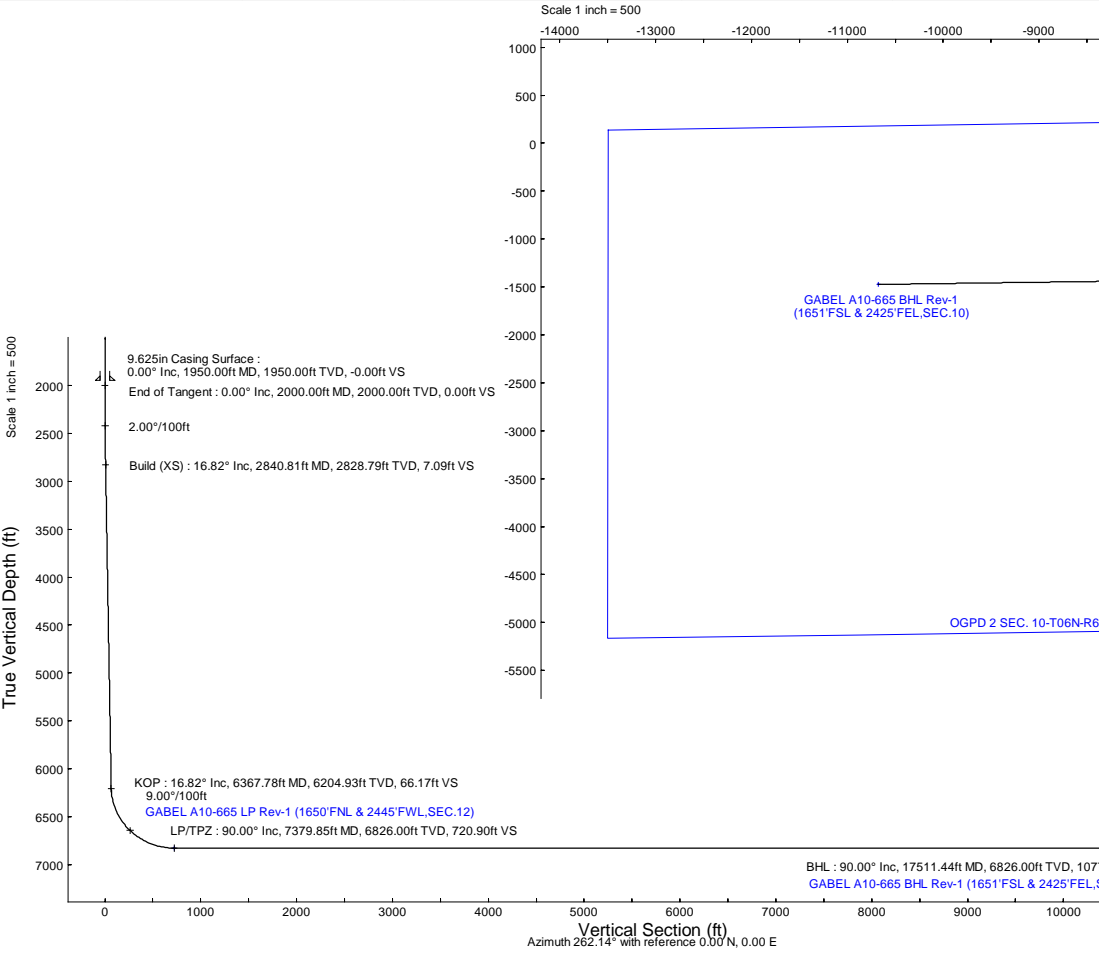
Location: COLORADO Slot: SLOT#03 GABEL A10-665 (321°FNL & 2288°FEL,SEC.12)
 Field: WELD COUNTY (NOBLE NAD 83 GRID) Well: GABEL A10-665
 Facility: SEC.12-T06N-R64W Wellbore: GABEL A10-665 PWB

Plot reference wellpath is GABEL A10-665 (REV-A.0) PWP
 True vertical depths are referenced to (4722'GL+30'KB@4752'RKB) (RKB)
 Reference wellpath measured depths are referenced to (4722'GL+30'KB@4752'RKB) (RKB)
 (4722'GL+30'KB@4752'RKB) (RKB) to Mean Sea Level: 4752 feet
 Mean Sea Level to Ground level (At Slot: SLOT#03 GABEL A10-665 (321°FNL & 2288°FEL,SEC.12)): 0 feet
 Offset wellpath MDs are referenced to each path's default MD datum

Grid System: NAD83 / Lambert Colorado SP, Northern Zone (501), US feet
 North Reference: Grid north
 Scale: True distance
 Coordinates are in feet referenced to Slot
 Depths are in feet
 Created by: guenaler on 2023-01-20; Database: WellArchitectDB

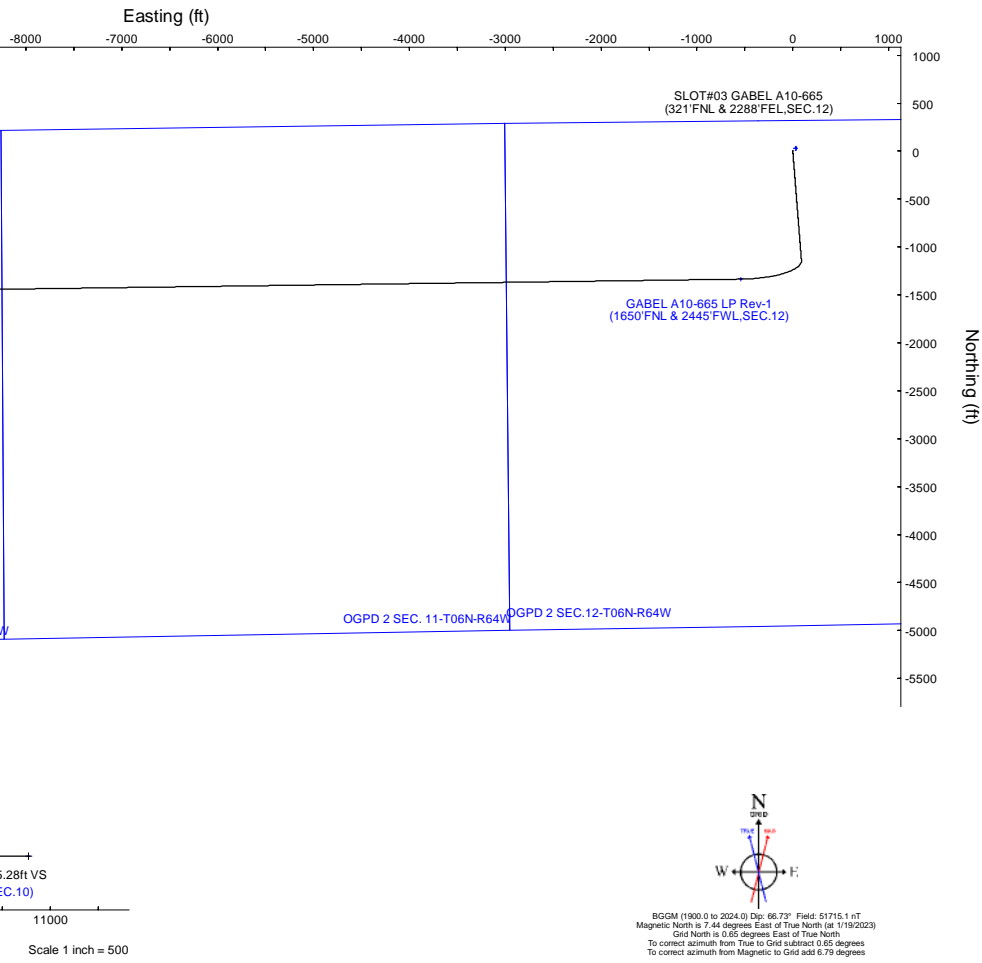
Location Information						
Facility Name		Grid East (US ft)	Grid North (US ft)	Latitude	Longitude	
SEC.12-T06N-R64W		3278923.071	1429205.676	40°30'26.0640"N	104°29'48.8760"W	
Slot	Local N (ft)	Local E (ft)	Grid East (US ft)	Grid North (US ft)	Latitude	Longitude
SLOT#03 GABEL A10-665 (321°FNL & 2288°FEL,SEC.12)	-29.49	-30.26	3278892.814	1429176.187	40°30'25.7760"N	104°29'49.2720"W
(4722'GL+30'KB@4752'RKB) (RKB) to Ground level (At Slot: SLOT#03 GABEL A10-665 (321°FNL & 2288°FEL,SEC.12))		4752ft				
Mean Sea Level to Ground level (At Slot: SLOT#03 GABEL A10-665 (321°FNL & 2288°FEL,SEC.12))		0ft				
(4722'GL+30'KB@4752'RKB) (RKB) to Mean Sea Level		4752ft				

Survey Program					
Start MD (ft)	End MD (ft)	Tool	Model	Log Name/Comment	Wellbore
30.00	17511.44	OWSG MWD rev2	OWSG MWD rev2 (MS+IFR1)		GABEL A10-665 PWB



Well Profile Data								
Design Comment	MD (ft)	Inc (°)	Az (°)	TVD (ft)	Local N (ft)	Local E (ft)	DLS (°/100ft)	VS (ft)
SHL	30.00	0.000	175.457	30.00	0.00	0.00	0.00	0.00
End of Tangent	2000.00	0.000	175.457	2000.00	0.00	0.00	0.00	0.00
Build (XS)	2840.81	16.816	175.457	2828.79	-122.12	9.70	2.00	7.09
KOP	6367.78	16.816	175.457	6204.93	-1139.28	90.52	0.00	66.17
LP/TPZ	7379.85	90.000	269.216	6826.00	-1335.27	-543.36	9.00	720.90
BHL	17511.44	90.000	269.216	6826.00	-1473.91	-10674.00	0.00	10775.28

Targets								
Name	MD (ft)	TVD (ft)	Local N (ft)	Local E (ft)	Grid East (US ft)	Grid North (US ft)	Latitude	Longitude
OGPD 2 SEC. 10-T06N-R64W	N/A	-2.00	29.49	30.26	3278923.07	1429205.68	40°30'26.0640"N	104°29'48.8760"W
OGPD 2 SEC. 11-T06N-R64W	N/A	-2.00	29.49	30.26	3278923.07	1429205.68	40°30'26.0640"N	104°29'48.8760"W
OGPD 2 SEC. 12-T06N-R64W	N/A	-2.00	29.49	30.26	3278923.07	1429205.68	40°30'26.0640"N	104°29'48.8760"W
GABEL A10-665 BHL Rev-1 (1651°FSL & 2425°FEL,SEC.10)	17511.44	6826.00	-1473.91	-10674.00	3268219.19	1427702.33	40°30'12.3827"N	104°32'7.6561"W
GABEL A10-665 LP Rev-1 (1650°FNL & 2445°FWL,SEC.12)	7379.85	6826.00	-1335.27	-543.36	3278348.47	1427840.97	40°30'12.6431"N	104°29'56.5010"W



BGM (1900.0 to 2024.0) Dip: 66.73° Field: 51715.1 nT
 Magnetic North is 7.44 degrees East of True North (at 1/19/2023)
 Grid North is 0.65 degrees East of True North
 To correct azimuth from True to Grid subtract 0.65 degrees
 To correct azimuth from Magnetic to Grid add 6.78 degrees



Planned Wellpath Report

GABEL A10-665 (REV-A.0) PWP

Page 1 of 7



REFERENCE WELLPATH IDENTIFICATION

Operator	NOBLE ENERGY, INC	Well	GABEL A10-665
Field	WELD COUNTY (NOBLE NAD 83 GRID)	API/Legal	
Facility	SEC.12-T06N-R64W	Wellbore	GABEL A10-665 PWB
Slot	SLOT#03 GABEL A10-665 (321'FNL & 2288'FEL,SEC.12)		

REPORT SETUP INFORMATION

Projection System	NAD83 / Lambert Colorado SP, Northern Zone (501), US feet	Software System	WellArchitect® 6.0
North Reference	Grid	User	Guenaler
Scale	0.999967	Report Generated	1/20/2023 at 8:52:03 PM
Convergence at slot	0.65° East	Database	WellArchitectDB

WELLPATH LOCATION

	Local coordinates		Grid coordinates		Geographic coordinates	
	North[ft]	East[ft]	Easting[US ft]	Northing[US ft]	Latitude	Longitude
Slot Location	-29.49	-30.26	3278892.81	1429176.19	40.5071600°	-104.4970200°
Facility Reference Pt			3278923.07	1429205.68	40.5072400°	-104.4969100°
Field Reference Pt			3000000.00	4454105.15	48.7761986°	-105.5000000°

WELLPATH DATUM

Calculation method	Minimum curvature	(4722'GL+30'KB@4752'RKB) (RKB) to Facility Vertical Datum	4752.00ft
Horizontal Reference Pt	Slot	(4722'GL+30'KB@4752'RKB) (RKB) to Mean Sea Level	4752.00ft
Vertical Reference Pt	(4722'GL+30'KB@4752'RKB) (RKB)	(4722'GL+30'KB@4752'RKB) (RKB) to Ground Level at Slot (SLOT#03 GABEL A10-665 (321'FNL & 2288'FEL,SEC.12))	4752.00ft
MD Reference Pt	(4722'GL+30'KB@4752'RKB) (RKB)	Section Origin	N 0.00, E 0.00 ft
Field Vertical Reference	Mean Sea Level	Section Azimuth	262.14°



Planned Wellpath Report

GABEL A10-665 (REV-A.0) PWP

Page 2 of 7



REFERENCE WELLPATH IDENTIFICATION			
Operator	NOBLE ENERGY, INC	Well	GABEL A10-665
Field	WELD COUNTY (NOBLE NAD 83 GRID)	API/Legal	
Facility	SEC.12-T06N-R64W	Wellbore	GABEL A10-665 PWB
Slot	SLOT#03 GABEL A10-665 (321'FNL & 2288'FEL,SEC.12)		

WELLPATH DATA (181 stations) † = interpolated, ‡ = extrapolated station										
MD [ft]	Inclination [°]	Azimuth [°]	TVD [ft]	Vert Sect [ft]	North [ft]	East [ft]	Latitude	Longitude	DLS [°/100ft]	Comments
0.00†	0.000	175.457	0.00	0.00	0.00	0.00	40.5071600	-104.4970200	0.00	
30.00	0.000	175.457	30.00	0.00	0.00	0.00	40.5071600	-104.4970200	0.00	SHL
130.00†	0.000	175.457	130.00	0.00	0.00	0.00	40.5071600	-104.4970200	0.00	
230.00†	0.000	175.457	230.00	0.00	0.00	0.00	40.5071600	-104.4970200	0.00	
330.00†	0.000	175.457	330.00	0.00	0.00	0.00	40.5071600	-104.4970200	0.00	
430.00†	0.000	175.457	430.00	0.00	0.00	0.00	40.5071600	-104.4970200	0.00	
530.00†	0.000	175.457	530.00	0.00	0.00	0.00	40.5071600	-104.4970200	0.00	
630.00†	0.000	175.457	630.00	0.00	0.00	0.00	40.5071600	-104.4970200	0.00	
730.00†	0.000	175.457	730.00	0.00	0.00	0.00	40.5071600	-104.4970200	0.00	
830.00†	0.000	175.457	830.00	0.00	0.00	0.00	40.5071600	-104.4970200	0.00	
930.00†	0.000	175.457	930.00	0.00	0.00	0.00	40.5071600	-104.4970200	0.00	
1030.00†	0.000	175.457	1030.00	0.00	0.00	0.00	40.5071600	-104.4970200	0.00	
1130.00†	0.000	175.457	1130.00	0.00	0.00	0.00	40.5071600	-104.4970200	0.00	
1230.00†	0.000	175.457	1230.00	0.00	0.00	0.00	40.5071600	-104.4970200	0.00	
1330.00†	0.000	175.457	1330.00	0.00	0.00	0.00	40.5071600	-104.4970200	0.00	
1430.00†	0.000	175.457	1430.00	0.00	0.00	0.00	40.5071600	-104.4970200	0.00	
1530.00†	0.000	175.457	1530.00	0.00	0.00	0.00	40.5071600	-104.4970200	0.00	
1630.00†	0.000	175.457	1630.00	0.00	0.00	0.00	40.5071600	-104.4970200	0.00	
1730.00†	0.000	175.457	1730.00	0.00	0.00	0.00	40.5071600	-104.4970200	0.00	
1830.00†	0.000	175.457	1830.00	0.00	0.00	0.00	40.5071600	-104.4970200	0.00	
1930.00†	0.000	175.457	1930.00	0.00	0.00	0.00	40.5071600	-104.4970200	0.00	
2000.00	0.000	175.457	2000.00	0.00	0.00	0.00	40.5071600	-104.4970200	0.00	End of Tangent
2030.00†	0.600	175.457	2030.00	0.01	-0.16	0.01	40.5071596	-104.4970200	2.00	
2130.00†	2.600	175.457	2129.96	0.17	-2.94	0.23	40.5071519	-104.4970193	2.00	
2230.00†	4.600	175.457	2229.75	0.53	-9.20	0.73	40.5071347	-104.4970177	2.00	
2330.00†	6.600	175.457	2329.27	1.10	-18.93	1.50	40.5071080	-104.4970154	2.00	
2430.00†	8.600	175.457	2428.39	1.86	-32.11	2.55	40.5070718	-104.4970121	2.00	
2530.00†	10.600	175.457	2526.98	2.83	-48.73	3.87	40.5070261	-104.4970081	2.00	
2630.00†	12.600	175.457	2624.93	3.99	-68.78	5.46	40.5069711	-104.4970031	2.00	
2730.00†	14.600	175.457	2722.13	5.36	-92.22	7.33	40.5069067	-104.4969974	2.00	
2830.00†	16.600	175.457	2818.44	6.91	-119.02	9.46	40.5068330	-104.4969908	2.00	
2840.81	16.816	175.457	2828.79	7.09	-122.12	9.70	40.5068245	-104.4969901	2.00	Build (XS)
2930.00†	16.816	175.457	2914.17	8.59	-147.84	11.75	40.5067539	-104.4969838	0.00	
3030.00†	16.816	175.457	3009.89	10.26	-176.68	14.04	40.5066746	-104.4969767	0.00	
3130.00†	16.816	175.457	3105.61	11.94	-205.52	16.33	40.5065954	-104.4969696	0.00	
3230.00†	16.816	175.457	3201.34	13.61	-234.36	18.62	40.5065162	-104.4969626	0.00	
3330.00†	16.816	175.457	3297.06	15.29	-263.20	20.91	40.5064370	-104.4969555	0.00	
3430.00†	16.816	175.457	3392.79	16.96	-292.04	23.20	40.5063577	-104.4969484	0.00	
3530.00†	16.816	175.457	3488.51	18.64	-320.88	25.50	40.5062785	-104.4969414	0.00	
3630.00†	16.816	175.457	3584.23	20.31	-349.72	27.79	40.5061993	-104.4969343	0.00	
3730.00†	16.816	175.457	3679.96	21.99	-378.56	30.08	40.5061201	-104.4969272	0.00	
3830.00†	16.816	175.457	3775.68	23.66	-407.40	32.37	40.5060408	-104.4969202	0.00	
3930.00†	16.816	175.457	3871.40	25.34	-436.24	34.66	40.5059616	-104.4969131	0.00	
4030.00†	16.816	175.457	3967.13	27.01	-465.08	36.95	40.5058824	-104.4969060	0.00	
4130.00†	16.816	175.457	4062.85	28.69	-493.91	39.24	40.5058031	-104.4968990	0.00	



Planned Wellpath Report

GABEL A10-665 (REV-A.0) PWP

Page 3 of 7



REFERENCE WELLPATH IDENTIFICATION

Operator	NOBLE ENERGY, INC	Well	GABEL A10-665
Field	WELD COUNTY (NOBLE NAD 83 GRID)	API/Legal	
Facility	SEC.12-T06N-R64W	Wellbore	GABEL A10-665 PWB
Slot	SLOT#03 GABEL A10-665 (321'FNL & 2288'FEL,SEC.12)		

WELLPATH DATA (181 stations) † = interpolated, ‡ = extrapolated station

MD [ft]	Inclination [°]	Azimuth [°]	TVD [ft]	Vert Sect [ft]	North [ft]	East [ft]	Latitude	Longitude	DLS [°/100ft]	Comments
4230.00†	16.816	175.457	4158.58	30.36	-522.75	41.54	40.5057239	-104.4968919	0.00	
4330.00†	16.816	175.457	4254.30	32.04	-551.59	43.83	40.5056447	-104.4968848	0.00	
4430.00†	16.816	175.457	4350.02	33.71	-580.43	46.12	40.5055655	-104.4968778	0.00	
4530.00†	16.816	175.457	4445.75	35.39	-609.27	48.41	40.5054862	-104.4968707	0.00	
4630.00†	16.816	175.457	4541.47	37.06	-638.11	50.70	40.5054070	-104.4968636	0.00	
4730.00†	16.816	175.457	4637.19	38.73	-666.95	52.99	40.5053278	-104.4968566	0.00	
4830.00†	16.816	175.457	4732.92	40.41	-695.79	55.28	40.5052486	-104.4968495	0.00	
4930.00†	16.816	175.457	4828.64	42.08	-724.63	57.58	40.5051693	-104.4968424	0.00	
5030.00†	16.816	175.457	4924.37	43.76	-753.47	59.87	40.5050901	-104.4968354	0.00	
5130.00†	16.816	175.457	5020.09	45.43	-782.31	62.16	40.5050109	-104.4968283	0.00	
5230.00†	16.816	175.457	5115.81	47.11	-811.15	64.45	40.5049317	-104.4968212	0.00	
5330.00†	16.816	175.457	5211.54	48.78	-839.99	66.74	40.5048524	-104.4968142	0.00	
5430.00†	16.816	175.457	5307.26	50.46	-868.83	69.03	40.5047732	-104.4968071	0.00	
5530.00†	16.816	175.457	5402.98	52.13	-897.67	71.32	40.5046940	-104.4968000	0.00	
5630.00†	16.816	175.457	5498.71	53.81	-926.51	73.62	40.5046148	-104.4967930	0.00	
5730.00†	16.816	175.457	5594.43	55.48	-955.35	75.91	40.5045355	-104.4967859	0.00	
5830.00†	16.816	175.457	5690.16	57.16	-984.18	78.20	40.5044563	-104.4967788	0.00	
5930.00†	16.816	175.457	5785.88	58.83	-1013.02	80.49	40.5043771	-104.4967718	0.00	
6030.00†	16.816	175.457	5881.60	60.51	-1041.86	82.78	40.5042979	-104.4967647	0.00	
6130.00†	16.816	175.457	5977.33	62.18	-1070.70	85.07	40.5042186	-104.4967577	0.00	
6230.00†	16.816	175.457	6073.05	63.86	-1099.54	87.36	40.5041394	-104.4967506	0.00	
6330.00†	16.816	175.457	6168.77	65.53	-1128.38	89.66	40.5040602	-104.4967435	0.00	
6367.78	16.816	175.457	6204.93	66.17	-1139.28	90.52	40.5040302	-104.4967409	0.00	KOP
6430.00†	17.362	194.507	6264.46	70.22	-1157.25	88.91	40.5039810	-104.4967474	9.00	
6530.00†	21.424	218.988	6358.92	89.27	-1185.95	73.65	40.5039027	-104.4968034	9.00	
6630.00†	27.817	234.355	6449.87	123.30	-1213.80	43.13	40.5038272	-104.4969143	9.00	
6730.00†	35.293	243.999	6535.08	171.50	-1240.11	-1.88	40.5037563	-104.4970772	9.00	
6830.00†	43.292	250.546	6612.45	232.66	-1264.25	-60.30	40.5036919	-104.4972882	9.00	
6930.00†	51.566	255.370	6680.06	305.29	-1285.60	-130.67	40.5036355	-104.4975421	9.00	
7030.00†	59.997	259.187	6736.26	387.59	-1303.66	-211.26	40.5035884	-104.4978326	9.00	
7130.00†	68.520	262.400	6779.66	477.55	-1317.96	-300.09	40.5035519	-104.4981526	9.00	
7230.00†	77.098	265.255	6809.19	572.94	-1328.17	-394.97	40.5035269	-104.4984942	9.00	
7330.00†	85.705	267.918	6824.13	671.41	-1334.02	-493.57	40.5035139	-104.4988490	9.00	
7379.85	90.000	269.216	6826.00 [†]	720.90	-1335.27	-543.36	40.5035120	-104.4990281	9.00	LP/TPZ
7430.00†	90.000	269.216	6826.00	770.67	-1335.95	-593.51	40.5035116	-104.4992084	0.00	
7530.00†	90.000	269.216	6826.00	869.91	-1337.32	-693.50	40.5035110	-104.4995680	0.00	
7630.00†	90.000	269.216	6826.00	969.14	-1338.69	-793.49	40.5035103	-104.4999276	0.00	
7730.00†	90.000	269.216	6826.00	1068.38	-1340.06	-893.48	40.5035097	-104.5002872	0.00	
7830.00†	90.000	269.216	6826.00	1167.62	-1341.43	-993.47	40.5035090	-104.5006467	0.00	
7930.00†	90.000	269.216	6826.00	1266.86	-1342.80	-1093.46	40.5035083	-104.5010063	0.00	
8030.00†	90.000	269.216	6826.00	1366.10	-1344.16	-1193.45	40.5035077	-104.5013659	0.00	
8130.00†	90.000	269.216	6826.00	1465.33	-1345.53	-1293.44	40.5035070	-104.5017255	0.00	
8230.00†	90.000	269.216	6826.00	1564.57	-1346.90	-1393.43	40.5035063	-104.5020851	0.00	
8330.00†	90.000	269.216	6826.00	1663.81	-1348.27	-1493.42	40.5035057	-104.5024447	0.00	
8430.00†	90.000	269.216	6826.00	1763.05	-1349.64	-1593.41	40.5035050	-104.5028043	0.00	



Planned Wellpath Report

GABEL A10-665 (REV-A.0) PWP

Page 4 of 7



REFERENCE WELLPATH IDENTIFICATION

Operator	NOBLE ENERGY, INC	Well	GABEL A10-665
Field	WELD COUNTY (NOBLE NAD 83 GRID)	API/Legal	
Facility	SEC.12-T06N-R64W	Wellbore	GABEL A10-665 PWB
Slot	SLOT#03 GABEL A10-665 (321'FNL & 2288'FEL,SEC.12)		

WELLPATH DATA (181 stations) † = interpolated, ‡ = extrapolated station

MD [ft]	Inclination [°]	Azimuth [°]	TVD [ft]	Vert Sect [ft]	North [ft]	East [ft]	Latitude	Longitude	DLS [°/100ft]	Comments
8530.00†	90.000	269.216	6826.00	1862.29	-1351.01	-1693.40	40.5035043	-104.5031639	0.00	
8630.00†	90.000	269.216	6826.00	1961.52	-1352.37	-1793.39	40.5035037	-104.5035234	0.00	
8730.00†	90.000	269.216	6826.00	2060.76	-1353.74	-1893.39	40.5035030	-104.5038830	0.00	
8830.00†	90.000	269.216	6826.00	2160.00	-1355.11	-1993.38	40.5035023	-104.5042426	0.00	
8930.00†	90.000	269.216	6826.00	2259.24	-1356.48	-2093.37	40.5035017	-104.5046022	0.00	
9030.00†	90.000	269.216	6826.00	2358.48	-1357.85	-2193.36	40.5035010	-104.5049618	0.00	
9130.00†	90.000	269.216	6826.00	2457.71	-1359.22	-2293.35	40.5035003	-104.5053214	0.00	
9230.00†	90.000	269.216	6826.00	2556.95	-1360.58	-2393.34	40.5034996	-104.5056810	0.00	
9330.00†	90.000	269.216	6826.00	2656.19	-1361.95	-2493.33	40.5034989	-104.5060406	0.00	
9430.00†	90.000	269.216	6826.00	2755.43	-1363.32	-2593.32	40.5034983	-104.5064002	0.00	
9530.00†	90.000	269.216	6826.00	2854.67	-1364.69	-2693.31	40.5034976	-104.5067597	0.00	
9630.00†	90.000	269.216	6826.00	2953.90	-1366.06	-2793.30	40.5034969	-104.5071193	0.00	
9730.00†	90.000	269.216	6826.00	3053.14	-1367.43	-2893.29	40.5034962	-104.5074789	0.00	
9830.00†	90.000	269.216	6826.00	3152.38	-1368.79	-2993.28	40.5034955	-104.5078385	0.00	
9930.00†	90.000	269.216	6826.00	3251.62	-1370.16	-3093.27	40.5034948	-104.5081981	0.00	
10030.00†	90.000	269.216	6826.00	3350.85	-1371.53	-3193.26	40.5034942	-104.5085577	0.00	
10130.00†	90.000	269.216	6826.00	3450.09	-1372.90	-3293.25	40.5034935	-104.5089173	0.00	
10230.00†	90.000	269.216	6826.00	3549.33	-1374.27	-3393.24	40.5034928	-104.5092769	0.00	
10330.00†	90.000	269.216	6826.00	3648.57	-1375.64	-3493.24	40.5034921	-104.5096364	0.00	
10430.00†	90.000	269.216	6826.00	3747.81	-1377.00	-3593.23	40.5034914	-104.5099960	0.00	
10530.00†	90.000	269.216	6826.00	3847.04	-1378.37	-3693.22	40.5034907	-104.5103556	0.00	
10630.00†	90.000	269.216	6826.00	3946.28	-1379.74	-3793.21	40.5034900	-104.5107152	0.00	
10730.00†	90.000	269.216	6826.00	4045.52	-1381.11	-3893.20	40.5034893	-104.5110748	0.00	
10830.00†	90.000	269.216	6826.00	4144.76	-1382.48	-3993.19	40.5034886	-104.5114344	0.00	
10930.00†	90.000	269.216	6826.00	4244.00	-1383.85	-4093.18	40.5034879	-104.5117940	0.00	
11030.00†	90.000	269.216	6826.00	4343.23	-1385.22	-4193.17	40.5034872	-104.5121536	0.00	
11130.00†	90.000	269.216	6826.00	4442.47	-1386.58	-4293.16	40.5034865	-104.5125132	0.00	
11230.00†	90.000	269.216	6826.00	4541.71	-1387.95	-4393.15	40.5034858	-104.5128727	0.00	
11330.00†	90.000	269.216	6826.00	4640.95	-1389.32	-4493.14	40.5034851	-104.5132323	0.00	
11430.00†	90.000	269.216	6826.00	4740.19	-1390.69	-4593.13	40.5034844	-104.5135919	0.00	
11530.00†	90.000	269.216	6826.00	4839.42	-1392.06	-4693.12	40.5034837	-104.5139515	0.00	
11630.00†	90.000	269.216	6826.00	4938.66	-1393.43	-4793.11	40.5034830	-104.5143111	0.00	
11730.00†	90.000	269.216	6826.00	5037.90	-1394.79	-4893.10	40.5034823	-104.5146707	0.00	
11830.00†	90.000	269.216	6826.00	5137.14	-1396.16	-4993.09	40.5034816	-104.5150303	0.00	
11930.00†	90.000	269.216	6826.00	5236.38	-1397.53	-5093.09	40.5034809	-104.5153899	0.00	
12030.00†	90.000	269.216	6826.00	5335.61	-1398.90	-5193.08	40.5034802	-104.5157494	0.00	
12130.00†	90.000	269.216	6826.00	5434.85	-1400.27	-5293.07	40.5034795	-104.5161090	0.00	
12230.00†	90.000	269.216	6826.00	5534.09	-1401.64	-5393.06	40.5034788	-104.5164686	0.00	
12330.00†	90.000	269.216	6826.00	5633.33	-1403.00	-5493.05	40.5034781	-104.5168282	0.00	
12430.00†	90.000	269.216	6826.00	5732.57	-1404.37	-5593.04	40.5034773	-104.5171878	0.00	
12530.00†	90.000	269.216	6826.00	5831.80	-1405.74	-5693.03	40.5034766	-104.5175474	0.00	
12630.00†	90.000	269.216	6826.00	5931.04	-1407.11	-5793.02	40.5034759	-104.5179070	0.00	
12730.00†	90.000	269.216	6826.00	6030.28	-1408.48	-5893.01	40.5034752	-104.5182666	0.00	
12830.00†	90.000	269.216	6826.00	6129.52	-1409.85	-5993.00	40.5034745	-104.5186262	0.00	
12930.00†	90.000	269.216	6826.00	6228.76	-1411.21	-6092.99	40.5034738	-104.5189857	0.00	



Planned Wellpath Report

GABEL A10-665 (REV-A.0) PWP

Page 5 of 7



REFERENCE WELLPATH IDENTIFICATION

Operator	NOBLE ENERGY, INC	Well	GABEL A10-665
Field	WELD COUNTY (NOBLE NAD 83 GRID)	API/Legal	
Facility	SEC.12-T06N-R64W	Wellbore	GABEL A10-665 PWB
Slot	SLOT#03 GABEL A10-665 (321'FNL & 2288'FEL,SEC.12)		

WELLPATH DATA (181 stations) † = interpolated, ‡ = extrapolated station

MD [ft]	Inclination [°]	Azimuth [°]	TVD [ft]	Vert Sect [ft]	North [ft]	East [ft]	Latitude	Longitude	DLS [°/100ft]	Comments
13030.00†	90.000	269.216	6826.00	6327.99	-1412.58	-6192.98	40.5034730	-104.5193453	0.00	
13130.00†	90.000	269.216	6826.00	6427.23	-1413.95	-6292.97	40.5034723	-104.5197049	0.00	
13230.00†	90.000	269.216	6826.00	6526.47	-1415.32	-6392.96	40.5034716	-104.5200645	0.00	
13330.00†	90.000	269.216	6826.00	6625.71	-1416.69	-6492.95	40.5034709	-104.5204241	0.00	
13430.00†	90.000	269.216	6826.00	6724.95	-1418.06	-6592.95	40.5034702	-104.5207837	0.00	
13530.00†	90.000	269.216	6826.00	6824.18	-1419.42	-6692.94	40.5034694	-104.5211433	0.00	
13630.00†	90.000	269.216	6826.00	6923.42	-1420.79	-6792.93	40.5034687	-104.5215029	0.00	
13730.00†	90.000	269.216	6826.00	7022.66	-1422.16	-6892.92	40.5034680	-104.5218624	0.00	
13830.00†	90.000	269.216	6826.00	7121.90	-1423.53	-6992.91	40.5034672	-104.5222220	0.00	
13930.00†	90.000	269.216	6826.00	7221.14	-1424.90	-7092.90	40.5034665	-104.5225816	0.00	
14030.00†	90.000	269.216	6826.00	7320.37	-1426.27	-7192.89	40.5034658	-104.5229412	0.00	
14130.00†	90.000	269.216	6826.00	7419.61	-1427.63	-7292.88	40.5034650	-104.5233008	0.00	
14230.00†	90.000	269.216	6826.00	7518.85	-1429.00	-7392.87	40.5034643	-104.5236604	0.00	
14330.00†	90.000	269.216	6826.00	7618.09	-1430.37	-7492.86	40.5034636	-104.5240200	0.00	
14430.00†	90.000	269.216	6826.00	7717.33	-1431.74	-7592.85	40.5034628	-104.5243796	0.00	
14530.00†	90.000	269.216	6826.00	7816.56	-1433.11	-7692.84	40.5034621	-104.5247392	0.00	
14630.00†	90.000	269.216	6826.00	7915.80	-1434.48	-7792.83	40.5034614	-104.5250987	0.00	
14730.00†	90.000	269.216	6826.00	8015.04	-1435.85	-7892.82	40.5034606	-104.5254583	0.00	
14830.00†	90.000	269.216	6826.00	8114.28	-1437.21	-7992.81	40.5034599	-104.5258179	0.00	
14930.00†	90.000	269.216	6826.00	8213.52	-1438.58	-8092.80	40.5034591	-104.5261775	0.00	
15030.00†	90.000	269.216	6826.00	8312.75	-1439.95	-8192.80	40.5034584	-104.5265371	0.00	
15130.00†	90.000	269.216	6826.00	8411.99	-1441.32	-8292.79	40.5034577	-104.5268967	0.00	
15230.00†	90.000	269.216	6826.00	8511.23	-1442.69	-8392.78	40.5034569	-104.5272563	0.00	
15330.00†	90.000	269.216	6826.00	8610.47	-1444.06	-8492.77	40.5034562	-104.5276159	0.00	
15430.00†	90.000	269.216	6826.00	8709.70	-1445.42	-8592.76	40.5034554	-104.5279754	0.00	
15530.00†	90.000	269.216	6826.00	8808.94	-1446.79	-8692.75	40.5034547	-104.5283350	0.00	
15630.00†	90.000	269.216	6826.00	8908.18	-1448.16	-8792.74	40.5034539	-104.5286946	0.00	
15730.00†	90.000	269.216	6826.00	9007.42	-1449.53	-8892.73	40.5034532	-104.5290542	0.00	
15830.00†	90.000	269.216	6826.00	9106.66	-1450.90	-8992.72	40.5034524	-104.5294138	0.00	
15930.00†	90.000	269.216	6826.00	9205.89	-1452.27	-9092.71	40.5034517	-104.5297734	0.00	
16030.00†	90.000	269.216	6826.00	9305.13	-1453.63	-9192.70	40.5034509	-104.5301330	0.00	
16130.00†	90.000	269.216	6826.00	9404.37	-1455.00	-9292.69	40.5034502	-104.5304926	0.00	
16230.00†	90.000	269.216	6826.00	9503.61	-1456.37	-9392.68	40.5034494	-104.5308521	0.00	
16330.00†	90.000	269.216	6826.00	9602.85	-1457.74	-9492.67	40.5034487	-104.5312117	0.00	
16430.00†	90.000	269.216	6826.00	9702.08	-1459.11	-9592.66	40.5034479	-104.5315713	0.00	
16530.00†	90.000	269.216	6826.00	9801.32	-1460.48	-9692.65	40.5034471	-104.5319309	0.00	
16630.00†	90.000	269.216	6826.00	9900.56	-1461.84	-9792.65	40.5034464	-104.5322905	0.00	
16730.00†	90.000	269.216	6826.00	9999.80	-1463.21	-9892.64	40.5034456	-104.5326501	0.00	
16830.00†	90.000	269.216	6826.00	10099.04	-1464.58	-9992.63	40.5034449	-104.5330097	0.00	
16930.00†	90.000	269.216	6826.00	10198.27	-1465.95	-10092.62	40.5034441	-104.5333693	0.00	
17030.00†	90.000	269.216	6826.00	10297.51	-1467.32	-10192.61	40.5034433	-104.5337288	0.00	
17130.00†	90.000	269.216	6826.00	10396.75	-1468.69	-10292.60	40.5034426	-104.5340884	0.00	
17230.00†	90.000	269.216	6826.00	10495.99	-1470.05	-10392.59	40.5034418	-104.5344480	0.00	
17330.00†	90.000	269.216	6826.00	10595.23	-1471.42	-10492.58	40.5034410	-104.5348076	0.00	
17430.00†	90.000	269.216	6826.00	10694.46	-1472.79	-10592.57	40.5034403	-104.5351672	0.00	

REFERENCE WELLPATH IDENTIFICATION

Operator	NOBLE ENERGY, INC	Well	GABEL A10-665
Field	WELD COUNTY (NOBLE NAD 83 GRID)	API/Legal	
Facility	SEC.12-T06N-R64W	Wellbore	GABEL A10-665 PWB
Slot	SLOT#03 GABEL A10-665 (321'FNL & 2288'FEL,SEC.12)		

WELLPATH DATA (181 stations)

MD [ft]	Inclination [°]	Azimuth [°]	TVD [ft]	Vert Sect [ft]	North [ft]	East [ft]	Latitude	Longitude	DLS [°/100ft]	Comments
17511.44	90.000	269.216	6826.00 ²	10775.28	-1473.91	-10674.00	40.5034396	-104.5354600	0.00	BHL

HOLE & CASING SECTIONS - Ref Wellbore: GABEL A10-665 PWB Ref Wellpath: GABEL A10-665 (REV-A.0) PWP

String/Diameter	Start MD [ft]	End MD [ft]	Interval [ft]	Start TVD [ft]	End TVD [ft]	Start N/S [ft]	Start E/W [ft]	End N/S [ft]	End E/W [ft]
9.625in Casing Surface	30.00	1950.00	1920.00	30.00	1950.00	0.00	0.00	0.00	0.00

TARGETS

Name	MD [ft]	TVD [ft]	North [ft]	East [ft]	Grid East [US ft]	Grid North [US ft]	Latitude	Longitude	Shape
OGPD 2 SEC. 10-T06N-R64W	N/A	-2.00	29.49	30.26	3278923.07	1429205.68	40.5072400	-104.4969100	polygon
2D Polygon: dimensions not calculated									
OGPD 2 SEC. 11-T06N-R64W	N/A	-2.00	29.49	30.26	3278923.07	1429205.68	40.5072400	-104.4969100	polygon
2D Polygon: dimensions not calculated									
OGPD 2 SEC.12-T06N-R64W	N/A	-2.00	29.49	30.26	3278923.07	1429205.68	40.5072400	-104.4969100	polygon
2D Polygon: dimensions not calculated									
2) GABEL A10-665 BHL Rev-1 (1651'FSL & 2425'FEL,SEC.10)	17511.44	6826.00	-1473.91	-10674.00	3268219.19	1427702.33	40.5034396	-104.5354600	point
1) GABEL A10-665 LP Rev-1 (1650'FNL & 2445'FWL,SEC.12)	7379.85	6826.00	-1335.27	-543.36	3278349.47	1427840.97	40.5035120	-104.4990281	point

SURVEY PROGRAM - Ref Wellbore: GABEL A10-665 PWB Ref Wellpath: GABEL A10-665 (REV-A.0) PWP

Start MD [ft]	End MD [ft]	Positional Uncertainty Model	Log Name/Comment	Wellbore
30.00	17511.44	OWSG MWD rev2 (MS+IFR1)		GABEL A10-665 PWB



Planned Wellpath Report

GABEL A10-665 (REV-A.0) PWP

Page 7 of 7



REFERENCE WELLPATH IDENTIFICATION			
Operator	NOBLE ENERGY, INC	Well	GABEL A10-665
Field	WELD COUNTY (NOBLE NAD 83 GRID)	API/Legal	
Facility	SEC.12-T06N-R64W	Wellbore	GABEL A10-665 PWB
Slot	SLOT#03 GABEL A10-665 (321'FNL & 2288'FEL,SEC.12)		

DESIGN COMMENTS				
MD [ft]	Inclination [°]	Azimuth [°]	TVD [ft]	Comment
30.00	0.000	175.457	30.00	SHL
2000.00	0.000	175.457	2000.00	End of Tangent
2840.81	16.816	175.457	2828.79	Build (XS)
6367.78	16.816	175.457	6204.93	KOP
7379.85	90.000	269.216	6826.00	LP/TPZ
17511.44	90.000	269.216	6826.00	BHL