

# NOBLE ENERGY, INC

Location: COLORADO

Slot: SLOT#02 GABEL A10-675 (305°FNL & 2272°FEL,SEC.12)

Field: WELD COUNTY (NOBLE NAD 83 GRID)

Well: GABEL A10-675

Facility: SEC.12-T06N-R64W

Wellbore: GABEL A10-675 PWB

Plot reference wellpath is GABEL A10-675 (REV-A.0) PWP

Grid System: NAD83 / Lambert Colorado SP, Northern Zone (501), US feet

True vertical depths are referenced to (4723°GL+30°KB@4753°RKB) (RKB)

North Reference: Grid north

Reference wellpath measured depths are referenced to (4723°GL+30°KB@4753°RKB) (RKB)

Scale: True distance

(4723°GL+30°KB@4753°RKB) (RKB) to Mean Sea Level: 4753 feet

Coordinates are in feet referenced to Slot

Mean Sea Level to Ground level (At Slot: SLOT#02 GABEL A10-675 (305°FNL & 2272°FEL,SEC.12)): 0 feet

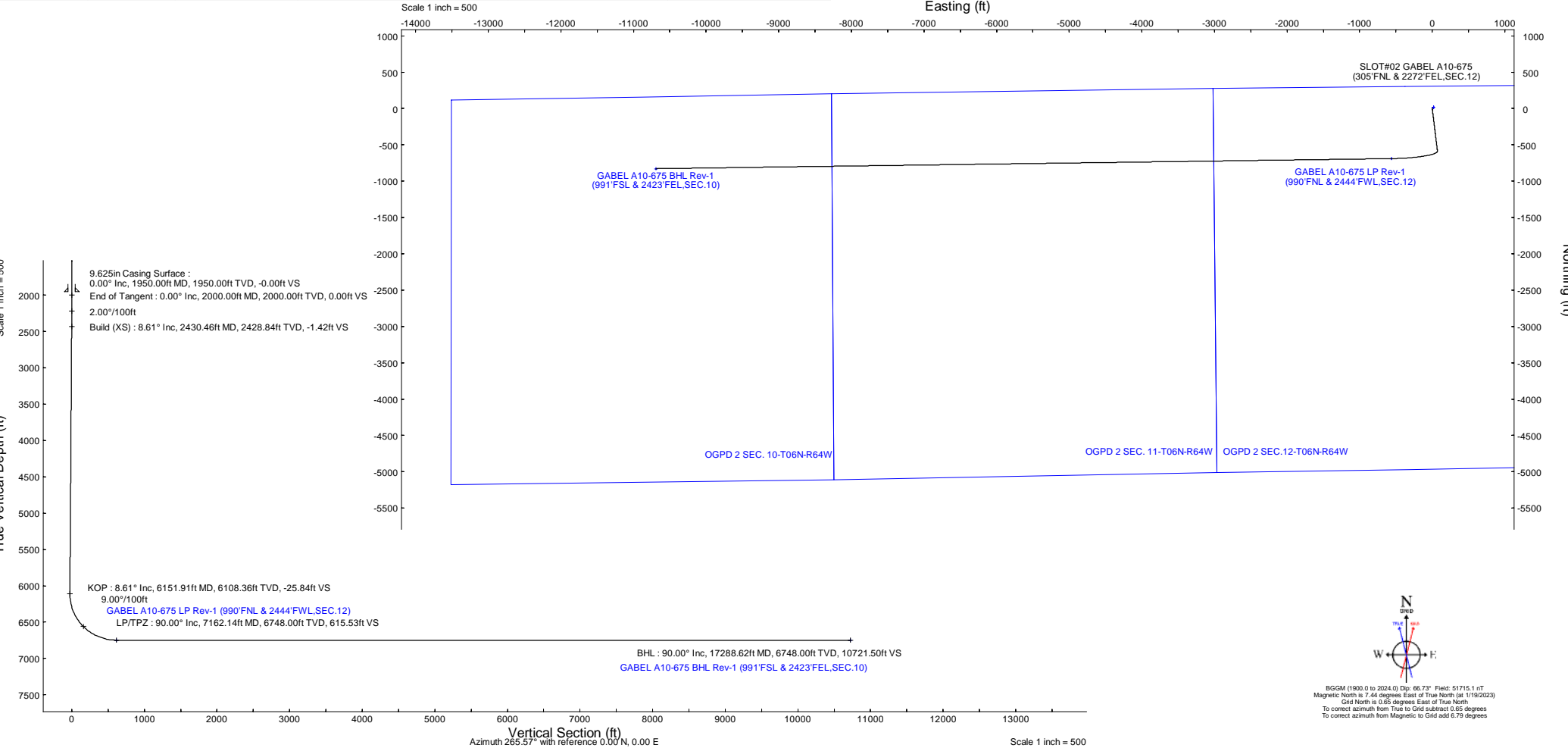
Depths are in feet

Offset wellpath MDs are referenced to each path's default MD datum

Created by: guenaler on 2023-01-20; Database: WellArchitectDB

Location Information					
Facility Name			Grid East (US ft)	Grid North (US ft)	Latitude
SEC.12-T06N-R64W			3278923.071	1429205.676	40°30'26.0640"N
Slot			Grid East (US ft)	Grid North (US ft)	Latitude
SLOT#02 GABEL A10-675 (305°FNL & 2272°FEL,SEC.12)			3278906.652	1429190.916	40°30'25.9200"N
			Longitude		
(4723°GL+30°KB@4753°RKB) (RKB) to Ground level (At Slot: SLOT#02 GABEL A10-675 (305°FNL & 2272°FEL,SEC.12))			4753ft		
Mean Sea Level to Ground level (At Slot: SLOT#02 GABEL A10-675 (305°FNL & 2272°FEL,SEC.12))			0ft		
(4723°GL+30°KB@4753°RKB) (RKB) to Mean Sea Level			4753ft		

Survey Program					
Start MD (ft)	End MD (ft)	Tool	Model	Log Name/Comment	Wellbore
30.00	17288.62	OWSG MWD rev2	OWSG MWD rev2 (MS+IFR1)		GABEL A10-675 PWB



Well Profile Data								
Design Comment	MD (ft)	Inc (°)	Az (°)	TVD (ft)	Local N (ft)	Local E (ft)	DLS (°/100ft)	VS (ft)
SHL	30.00	0.000	173.055	30.00	0.00	0.00	0.00	0.00
End of Tangent	2000.00	0.000	173.055	2000.00	0.00	0.00	0.00	0.00
Build (XS)	2430.46	8.609	173.055	2428.84	-32.04	3.90	2.00	-1.42
KOP	6151.91	8.609	173.055	6108.36	-585.03	71.27	0.00	-25.84
LP/TPZ	7162.14	90.000	269.216	6748.00	-690.01	-563.89	9.00	615.53
BHL	17288.62	90.000	269.216	6748.00	-828.55	-10689.43	0.00	10721.50

Targets								
Name	MD (ft)	TVD (ft)	Local N (ft)	Local E (ft)	Grid East (US ft)	Grid North (US ft)	Latitude	Longitude
OGPD 2 SEC. 10-T06N-R64W	N/A	-1.00	14.76	16.52	3278923.07	1429205.68	40°30'26.0640"N	104°29'48.8760"W
OGPD 2 SEC. 11-T06N-R64W	N/A	-1.00	14.76	16.52	3278923.07	1429205.68	40°30'26.0640"N	104°29'48.8760"W
OGPD 2 SEC. 12-T06N-R64W	N/A	-1.00	14.76	16.52	3278923.07	1429205.68	40°30'26.0640"N	104°29'48.8760"W
GABEL A10-675 BHL Rev-1 (991°FSL & 2423°FEL,SEC.10)	17288.62	6748.00	-828.55	-10689.43	3268217.50	1428362.39	40°30'18.9051"N	104°32'7.5851"W
GABEL A10-675 LP Rev-1 (990°FNL & 2444°FWL,SEC.12)	7162.14	6748.00	-690.01	-563.89	3278342.68	1428500.93	40°30'19.1651"N	104°29'56.4625"W





Planned Wellpath Report

GABEL A10-675 (REV-A.0) PWP

Page 1 of 7



REFERENCE WELLPATH IDENTIFICATION			
Operator	NOBLE ENERGY, INC	Well	GABEL A10-675
Field	WELD COUNTY (NOBLE NAD 83 GRID)	API/Legal	
Facility	SEC.12-T06N-R64W	Wellbore	GABEL A10-675 PWB
Slot	SLOT#02 GABEL A10-675 (305'FNL & 2272'FEL,SEC.12)		

REPORT SETUP INFORMATION			
Projection System	NAD83 / Lambert Colorado SP, Northern Zone (501), US feet	Software System	WellArchitect® 6.0
North Reference	Grid	User	Guenaler
Scale	0.999967	Report Generated	1/20/2023 at 8:52:13 PM
Convergence at slot	0.65° East	Database	WellArchitectDB

WELLPATH LOCATION						
	Local coordinates		Grid coordinates		Geographic coordinates	
	North[ft]	East[ft]	Easting[US ft]	Northing[US ft]	Latitude	Longitude
Slot Location	-14.76	-16.52	3278906.55	1429190.92	40.5072000°	-104.4969700°
Facility Reference Pt			3278923.07	1429205.68	40.5072400°	-104.4969100°
Field Reference Pt			3000000.00	4454105.15	48.7761986°	-105.5000000°

WELLPATH DATUM			
Calculation method	Minimum curvature	(4723'GL+30'KB@4753'RKB) (RKB) to Facility Vertical Datum	4753.00ft
Horizontal Reference Pt	Slot	(4723'GL+30'KB@4753'RKB) (RKB) to Mean Sea Level	4753.00ft
Vertical Reference Pt	(4723'GL+30'KB@4753'RKB) (RKB)	(4723'GL+30'KB@4753'RKB) (RKB) to Ground Level at Slot (SLOT#02 GABEL A10-675 (305'FNL & 2272'FEL,SEC.12))	4753.00ft
MD Reference Pt	(4723'GL+30'KB@4753'RKB) (RKB)	Section Origin	N 0.00, E 0.00 ft
Field Vertical Reference	Mean Sea Level	Section Azimuth	265.57°



Planned Wellpath Report  
GABEL A10-675 (REV-A.0) PWP  
Page 2 of 7



REFERENCE WELLPATH IDENTIFICATION			
Operator	NOBLE ENERGY, INC	Well	GABEL A10-675
Field	WELD COUNTY (NOBLE NAD 83 GRID)	API/Legal	
Facility	SEC.12-T06N-R64W	Wellbore	GABEL A10-675 PWB
Slot	SLOT#02 GABEL A10-675 (305'FNL & 2272'FEL,SEC.12)		

WELLPATH DATA (179 stations) † = interpolated, ‡ = extrapolated station										
MD [ft]	Inclination [°]	Azimuth [°]	TVD [ft]	Vert Sect [ft]	North [ft]	East [ft]	Latitude	Longitude	DLS [°/100ft]	Comments
0.00†	0.000	173.055	0.00	0.00	0.00	0.00	40.5072000	-104.4969700	0.00	
30.00	0.000	173.055	30.00	0.00	0.00	0.00	40.5072000	-104.4969700	0.00	SHL
130.00†	0.000	173.055	130.00	0.00	0.00	0.00	40.5072000	-104.4969700	0.00	
230.00†	0.000	173.055	230.00	0.00	0.00	0.00	40.5072000	-104.4969700	0.00	
330.00†	0.000	173.055	330.00	0.00	0.00	0.00	40.5072000	-104.4969700	0.00	
430.00†	0.000	173.055	430.00	0.00	0.00	0.00	40.5072000	-104.4969700	0.00	
530.00†	0.000	173.055	530.00	0.00	0.00	0.00	40.5072000	-104.4969700	0.00	
630.00†	0.000	173.055	630.00	0.00	0.00	0.00	40.5072000	-104.4969700	0.00	
730.00†	0.000	173.055	730.00	0.00	0.00	0.00	40.5072000	-104.4969700	0.00	
830.00†	0.000	173.055	830.00	0.00	0.00	0.00	40.5072000	-104.4969700	0.00	
930.00†	0.000	173.055	930.00	0.00	0.00	0.00	40.5072000	-104.4969700	0.00	
1030.00†	0.000	173.055	1030.00	0.00	0.00	0.00	40.5072000	-104.4969700	0.00	
1130.00†	0.000	173.055	1130.00	0.00	0.00	0.00	40.5072000	-104.4969700	0.00	
1230.00†	0.000	173.055	1230.00	0.00	0.00	0.00	40.5072000	-104.4969700	0.00	
1330.00†	0.000	173.055	1330.00	0.00	0.00	0.00	40.5072000	-104.4969700	0.00	
1430.00†	0.000	173.055	1430.00	0.00	0.00	0.00	40.5072000	-104.4969700	0.00	
1530.00†	0.000	173.055	1530.00	0.00	0.00	0.00	40.5072000	-104.4969700	0.00	
1630.00†	0.000	173.055	1630.00	0.00	0.00	0.00	40.5072000	-104.4969700	0.00	
1730.00†	0.000	173.055	1730.00	0.00	0.00	0.00	40.5072000	-104.4969700	0.00	
1830.00†	0.000	173.055	1830.00	0.00	0.00	0.00	40.5072000	-104.4969700	0.00	
1930.00†	0.000	173.055	1930.00	0.00	0.00	0.00	40.5072000	-104.4969700	0.00	
2000.00	0.000	173.055	2000.00	0.00	0.00	0.00	40.5072000	-104.4969700	0.00	End of Tangent
2030.00†	0.600	173.055	2030.00	-0.01	-0.16	0.02	40.5071996	-104.4969699	2.00	
2130.00†	2.600	173.055	2129.96	-0.13	-2.93	0.36	40.5071920	-104.4969688	2.00	
2230.00†	4.600	173.055	2229.75	-0.40	-9.16	1.12	40.5071748	-104.4969664	2.00	
2330.00†	6.600	173.055	2329.27	-0.83	-18.85	2.30	40.5071482	-104.4969625	2.00	
2430.00†	8.600	173.055	2428.39	-1.41	-31.97	3.90	40.5071121	-104.4969573	2.00	
2430.46	8.609	173.055	2428.84	-1.42	-32.04	3.90	40.5071119	-104.4969573	2.00	Build (XS)
2530.00†	8.609	173.055	2527.26	-2.07	-46.83	5.71	40.5070713	-104.4969514	0.00	
2630.00†	8.609	173.055	2626.13	-2.73	-61.69	7.52	40.5070304	-104.4969455	0.00	
2730.00†	8.609	173.055	2725.01	-3.38	-76.55	9.33	40.5069896	-104.4969396	0.00	
2830.00†	8.609	173.055	2823.88	-4.04	-91.41	11.14	40.5069488	-104.4969337	0.00	
2930.00†	8.609	173.055	2922.75	-4.69	-106.27	12.95	40.5069079	-104.4969278	0.00	
3030.00†	8.609	173.055	3021.63	-5.35	-121.13	14.76	40.5068671	-104.4969219	0.00	
3130.00†	8.609	173.055	3120.50	-6.01	-135.99	16.57	40.5068262	-104.4969160	0.00	
3230.00†	8.609	173.055	3219.37	-6.66	-150.85	18.38	40.5067854	-104.4969101	0.00	
3330.00†	8.609	173.055	3318.25	-7.32	-165.71	20.19	40.5067446	-104.4969042	0.00	
3430.00†	8.609	173.055	3417.12	-7.98	-180.57	22.00	40.5067037	-104.4968982	0.00	
3530.00†	8.609	173.055	3515.99	-8.63	-195.43	23.81	40.5066629	-104.4968923	0.00	
3630.00†	8.609	173.055	3614.87	-9.29	-210.29	25.62	40.5066220	-104.4968864	0.00	
3730.00†	8.609	173.055	3713.74	-9.95	-225.15	27.43	40.5065812	-104.4968805	0.00	
3830.00†	8.609	173.055	3812.61	-10.60	-240.01	29.24	40.5065404	-104.4968746	0.00	
3930.00†	8.609	173.055	3911.49	-11.26	-254.87	31.05	40.5064995	-104.4968687	0.00	
4030.00†	8.609	173.055	4010.36	-11.91	-269.72	32.86	40.5064587	-104.4968628	0.00	
4130.00†	8.609	173.055	4109.23	-12.57	-284.58	34.67	40.5064178	-104.4968569	0.00	



Planned Wellpath Report  
GABEL A10-675 (REV-A.0) PWP  
Page 3 of 7



REFERENCE WELLPATH IDENTIFICATION			
Operator	NOBLE ENERGY, INC	Well	GABEL A10-675
Field	WELD COUNTY (NOBLE NAD 83 GRID)	API/Legal	
Facility	SEC.12-T06N-R64W	Wellbore	GABEL A10-675 PWB
Slot	SLOT#02 GABEL A10-675 (305'FNL & 2272'FEL,SEC.12)		

WELLPATH DATA (179 stations) † = interpolated, ‡ = extrapolated station										
MD [ft]	Inclination [°]	Azimuth [°]	TVD [ft]	Vert Sect [ft]	North [ft]	East [ft]	Latitude	Longitude	DLS [°/100ft]	Comments
4230.00†	8.609	173.055	4208.11	-13.23	-299.44	36.48	40.5063770	-104.4968510	0.00	
4330.00†	8.609	173.055	4306.98	-13.88	-314.30	38.29	40.5063362	-104.4968451	0.00	
4430.00†	8.609	173.055	4405.85	-14.54	-329.16	40.10	40.5062953	-104.4968392	0.00	
4530.00†	8.609	173.055	4504.73	-15.20	-344.02	41.91	40.5062545	-104.4968333	0.00	
4630.00†	8.609	173.055	4603.60	-15.85	-358.88	43.72	40.5062136	-104.4968274	0.00	
4730.00†	8.609	173.055	4702.47	-16.51	-373.74	45.53	40.5061728	-104.4968215	0.00	
4830.00†	8.609	173.055	4801.35	-17.17	-388.60	47.34	40.5061320	-104.4968156	0.00	
4930.00†	8.609	173.055	4900.22	-17.82	-403.46	49.15	40.5060911	-104.4968097	0.00	
5030.00†	8.609	173.055	4999.09	-18.48	-418.32	50.96	40.5060503	-104.4968038	0.00	
5130.00†	8.609	173.055	5097.97	-19.14	-433.18	52.77	40.5060094	-104.4967979	0.00	
5230.00†	8.609	173.055	5196.84	-19.79	-448.04	54.58	40.5059686	-104.4967920	0.00	
5330.00†	8.609	173.055	5295.71	-20.45	-462.90	56.39	40.5059277	-104.4967861	0.00	
5430.00†	8.609	173.055	5394.59	-21.10	-477.76	58.20	40.5058869	-104.4967802	0.00	
5530.00†	8.609	173.055	5493.46	-21.76	-492.62	60.01	40.5058461	-104.4967743	0.00	
5630.00†	8.609	173.055	5592.33	-22.42	-507.47	61.82	40.5058052	-104.4967684	0.00	
5730.00†	8.609	173.055	5691.20	-23.07	-522.33	63.63	40.5057644	-104.4967624	0.00	
5830.00†	8.609	173.055	5790.08	-23.73	-537.19	65.44	40.5057235	-104.4967565	0.00	
5930.00†	8.609	173.055	5888.95	-24.39	-552.05	67.25	40.5056827	-104.4967506	0.00	
6030.00†	8.609	173.055	5987.82	-25.04	-566.91	69.06	40.5056419	-104.4967447	0.00	
6130.00†	8.609	173.055	6086.70	-25.70	-581.77	70.87	40.5056010	-104.4967388	0.00	
6151.91	8.609	173.055	6108.36	-25.84	-585.03	71.27	40.5055921	-104.4967375	0.00	KOP
6230.00†	10.503	214.929	6185.45	-21.58	-596.68	67.89	40.5055602	-104.4967501	9.00	
6330.00†	17.315	240.346	6282.55	-2.30	-611.54	49.71	40.5055200	-104.4968161	9.00	
6430.00†	25.497	250.817	6375.61	32.05	-626.01	16.38	40.5054813	-104.4969366	9.00	
6530.00†	34.074	256.358	6462.33	80.61	-639.72	-31.27	40.5054452	-104.4971085	9.00	
6630.00†	42.809	259.864	6540.59	142.20	-652.33	-92.07	40.5054124	-104.4973276	9.00	
6730.00†	51.621	262.369	6608.45	215.30	-663.54	-164.51	40.5053839	-104.4975885	9.00	
6830.00†	60.474	264.326	6664.25	298.10	-673.06	-246.82	40.5053603	-104.4978849	9.00	
6930.00†	69.351	265.964	6706.61	388.57	-680.67	-336.98	40.5053422	-104.4982094	9.00	
7030.00†	78.242	267.421	6734.49	484.48	-686.18	-432.75	40.5053301	-104.4985540	9.00	
7130.00†	87.140	268.785	6747.20	583.47	-689.45	-531.78	40.5053242	-104.4989102	9.00	
7162.14	90.000	269.216	6748.00†	615.53	-690.01	-563.89	40.5053236	-104.4990257	9.00	LP/TPZ
7230.00†	90.000	269.216	6748.00	683.26	-690.94	-631.75	40.5053232	-104.4992697	0.00	
7330.00†	90.000	269.216	6748.00	783.06	-692.30	-731.74	40.5053225	-104.4996293	0.00	
7430.00†	90.000	269.216	6748.00	882.85	-693.67	-831.73	40.5053219	-104.4999889	0.00	
7530.00†	90.000	269.216	6748.00	982.65	-695.04	-931.72	40.5053212	-104.5003485	0.00	
7630.00†	90.000	269.216	6748.00	1082.45	-696.41	-1031.71	40.5053206	-104.5007081	0.00	
7730.00†	90.000	269.216	6748.00	1182.25	-697.78	-1131.71	40.5053199	-104.5010677	0.00	
7830.00†	90.000	269.216	6748.00	1282.04	-699.15	-1231.70	40.5053192	-104.5014273	0.00	
7930.00†	90.000	269.216	6748.00	1381.84	-700.51	-1331.69	40.5053186	-104.5017869	0.00	
8030.00†	90.000	269.216	6748.00	1481.64	-701.88	-1431.68	40.5053179	-104.5021465	0.00	
8130.00†	90.000	269.216	6748.00	1581.43	-703.25	-1531.67	40.5053172	-104.5025061	0.00	
8230.00†	90.000	269.216	6748.00	1681.23	-704.62	-1631.66	40.5053166	-104.5028657	0.00	
8330.00†	90.000	269.216	6748.00	1781.03	-705.99	-1731.65	40.5053159	-104.5032253	0.00	
8430.00†	90.000	269.216	6748.00	1880.83	-707.35	-1831.64	40.5053152	-104.5035849	0.00	



Planned Wellpath Report  
GABEL A10-675 (REV-A.0) PWP  
Page 4 of 7



REFERENCE WELLPATH IDENTIFICATION			
Operator	NOBLE ENERGY, INC	Well	GABEL A10-675
Field	WELD COUNTY (NOBLE NAD 83 GRID)	API/Legal	
Facility	SEC.12-T06N-R64W	Wellbore	GABEL A10-675 PWB
Slot	SLOT#02 GABEL A10-675 (305'FNL & 2272'FEL,SEC.12)		

WELLPATH DATA (179 stations) † = interpolated, ‡ = extrapolated station										
MD [ft]	Inclination [°]	Azimuth [°]	TVD [ft]	Vert Sect [ft]	North [ft]	East [ft]	Latitude	Longitude	DLS [°/100ft]	Comments
8530.00†	90.000	269.216	6748.00	1980.62	-708.72	-1931.63	40.5053146	-104.5039445	0.00	
8630.00†	90.000	269.216	6748.00	2080.42	-710.09	-2031.62	40.5053139	-104.5043041	0.00	
8730.00†	90.000	269.216	6748.00	2180.22	-711.46	-2131.61	40.5053132	-104.5046637	0.00	
8830.00†	90.000	269.216	6748.00	2280.02	-712.83	-2231.60	40.5053125	-104.5050233	0.00	
8930.00†	90.000	269.216	6748.00	2379.81	-714.19	-2331.59	40.5053119	-104.5053829	0.00	
9030.00†	90.000	269.216	6748.00	2479.61	-715.56	-2431.58	40.5053112	-104.5057425	0.00	
9130.00†	90.000	269.216	6748.00	2579.41	-716.93	-2531.57	40.5053105	-104.5061021	0.00	
9230.00†	90.000	269.216	6748.00	2679.21	-718.30	-2631.57	40.5053098	-104.5064617	0.00	
9330.00†	90.000	269.216	6748.00	2779.00	-719.67	-2731.56	40.5053091	-104.5068213	0.00	
9430.00†	90.000	269.216	6748.00	2878.80	-721.04	-2831.55	40.5053085	-104.5071809	0.00	
9530.00†	90.000	269.216	6748.00	2978.60	-722.40	-2931.54	40.5053078	-104.5075405	0.00	
9630.00†	90.000	269.216	6748.00	3078.39	-723.77	-3031.53	40.5053071	-104.5079001	0.00	
9730.00†	90.000	269.216	6748.00	3178.19	-725.14	-3131.52	40.5053064	-104.5082597	0.00	
9830.00†	90.000	269.216	6748.00	3277.99	-726.51	-3231.51	40.5053057	-104.5086193	0.00	
9930.00†	90.000	269.216	6748.00	3377.79	-727.88	-3331.50	40.5053050	-104.5089789	0.00	
10030.00†	90.000	269.216	6748.00	3477.58	-729.24	-3431.49	40.5053043	-104.5093385	0.00	
10130.00†	90.000	269.216	6748.00	3577.38	-730.61	-3531.48	40.5053037	-104.5096981	0.00	
10230.00†	90.000	269.216	6748.00	3677.18	-731.98	-3631.47	40.5053030	-104.5100577	0.00	
10330.00†	90.000	269.216	6748.00	3776.98	-733.35	-3731.46	40.5053023	-104.5104173	0.00	
10430.00†	90.000	269.216	6748.00	3876.77	-734.72	-3831.45	40.5053016	-104.5107769	0.00	
10530.00†	90.000	269.216	6748.00	3976.57	-736.08	-3931.44	40.5053009	-104.5111365	0.00	
10630.00†	90.000	269.216	6748.00	4076.37	-737.45	-4031.43	40.5053002	-104.5114961	0.00	
10730.00†	90.000	269.216	6748.00	4176.17	-738.82	-4131.42	40.5052995	-104.5118557	0.00	
10830.00†	90.000	269.216	6748.00	4275.96	-740.19	-4231.42	40.5052988	-104.5122153	0.00	
10930.00†	90.000	269.216	6748.00	4375.76	-741.56	-4331.41	40.5052981	-104.5125749	0.00	
11030.00†	90.000	269.216	6748.00	4475.56	-742.93	-4431.40	40.5052974	-104.5129345	0.00	
11130.00†	90.000	269.216	6748.00	4575.35	-744.29	-4531.39	40.5052967	-104.5132941	0.00	
11230.00†	90.000	269.216	6748.00	4675.15	-745.66	-4631.38	40.5052960	-104.5136537	0.00	
11330.00†	90.000	269.216	6748.00	4774.95	-747.03	-4731.37	40.5052953	-104.5140133	0.00	
11430.00†	90.000	269.216	6748.00	4874.75	-748.40	-4831.36	40.5052946	-104.5143728	0.00	
11530.00†	90.000	269.216	6748.00	4974.54	-749.77	-4931.35	40.5052939	-104.5147324	0.00	
11630.00†	90.000	269.216	6748.00	5074.34	-751.13	-5031.34	40.5052932	-104.5150920	0.00	
11730.00†	90.000	269.216	6748.00	5174.14	-752.50	-5131.33	40.5052925	-104.5154516	0.00	
11830.00†	90.000	269.216	6748.00	5273.94	-753.87	-5231.32	40.5052918	-104.5158112	0.00	
11930.00†	90.000	269.216	6748.00	5373.73	-755.24	-5331.31	40.5052911	-104.5161708	0.00	
12030.00†	90.000	269.216	6748.00	5473.53	-756.61	-5431.30	40.5052903	-104.5165304	0.00	
12130.00†	90.000	269.216	6748.00	5573.33	-757.97	-5531.29	40.5052896	-104.5168900	0.00	
12230.00†	90.000	269.216	6748.00	5673.13	-759.34	-5631.28	40.5052889	-104.5172496	0.00	
12330.00†	90.000	269.216	6748.00	5772.92	-760.71	-5731.28	40.5052882	-104.5176092	0.00	
12430.00†	90.000	269.216	6748.00	5872.72	-762.08	-5831.27	40.5052875	-104.5179688	0.00	
12530.00†	90.000	269.216	6748.00	5972.52	-763.45	-5931.26	40.5052868	-104.5183284	0.00	
12630.00†	90.000	269.216	6748.00	6072.31	-764.82	-6031.25	40.5052861	-104.5186880	0.00	
12730.00†	90.000	269.216	6748.00	6172.11	-766.18	-6131.24	40.5052853	-104.5190476	0.00	
12830.00†	90.000	269.216	6748.00	6271.91	-767.55	-6231.23	40.5052846	-104.5194072	0.00	
12930.00†	90.000	269.216	6748.00	6371.71	-768.92	-6331.22	40.5052839	-104.5197668	0.00	





Planned Wellpath Report  
GABEL A10-675 (REV-A.0) PWP  
Page 5 of 7



REFERENCE WELLPATH IDENTIFICATION			
Operator	NOBLE ENERGY, INC	Well	GABEL A10-675
Field	WELD COUNTY (NOBLE NAD 83 GRID)	API/Legal	
Facility	SEC.12-T06N-R64W	Wellbore	GABEL A10-675 PWB
Slot	SLOT#02 GABEL A10-675 (305'FNL & 2272'FEL,SEC.12)		

WELLPATH DATA (179 stations) † = interpolated, ‡ = extrapolated station										
MD [ft]	Inclination [°]	Azimuth [°]	TVD [ft]	Vert Sect [ft]	North [ft]	East [ft]	Latitude	Longitude	DLS [°/100ft]	Comments
13030.00†	90.000	269.216	6748.00	6471.50	-770.29	-6431.21	40.5052832	-104.5201264	0.00	
13130.00†	90.000	269.216	6748.00	6571.30	-771.66	-6531.20	40.5052825	-104.5204860	0.00	
13230.00†	90.000	269.216	6748.00	6671.10	-773.02	-6631.19	40.5052817	-104.5208456	0.00	
13330.00†	90.000	269.216	6748.00	6770.90	-774.39	-6731.18	40.5052810	-104.5212052	0.00	
13430.00†	90.000	269.216	6748.00	6870.69	-775.76	-6831.17	40.5052803	-104.5215648	0.00	
13530.00†	90.000	269.216	6748.00	6970.49	-777.13	-6931.16	40.5052795	-104.5219244	0.00	
13630.00†	90.000	269.216	6748.00	7070.29	-778.50	-7031.15	40.5052788	-104.5222840	0.00	
13730.00†	90.000	269.216	6748.00	7170.09	-779.87	-7131.14	40.5052781	-104.5226436	0.00	
13830.00†	90.000	269.216	6748.00	7269.88	-781.23	-7231.13	40.5052774	-104.5230032	0.00	
13930.00†	90.000	269.216	6748.00	7369.68	-782.60	-7331.13	40.5052766	-104.5233628	0.00	
14030.00†	90.000	269.216	6748.00	7469.48	-783.97	-7431.12	40.5052759	-104.5237224	0.00	
14130.00†	90.000	269.216	6748.00	7569.28	-785.34	-7531.11	40.5052752	-104.5240820	0.00	
14230.00†	90.000	269.216	6748.00	7669.07	-786.71	-7631.10	40.5052744	-104.5244416	0.00	
14330.00†	90.000	269.216	6748.00	7768.87	-788.07	-7731.09	40.5052737	-104.5248012	0.00	
14430.00†	90.000	269.216	6748.00	7868.67	-789.44	-7831.08	40.5052730	-104.5251608	0.00	
14530.00†	90.000	269.216	6748.00	7968.46	-790.81	-7931.07	40.5052722	-104.5255204	0.00	
14630.00†	90.000	269.216	6748.00	8068.26	-792.18	-8031.06	40.5052715	-104.5258800	0.00	
14730.00†	90.000	269.216	6748.00	8168.06	-793.55	-8131.05	40.5052707	-104.5262396	0.00	
14830.00†	90.000	269.216	6748.00	8267.86	-794.91	-8231.04	40.5052700	-104.5265992	0.00	
14930.00†	90.000	269.216	6748.00	8367.65	-796.28	-8331.03	40.5052692	-104.5269588	0.00	
15030.00†	90.000	269.216	6748.00	8467.45	-797.65	-8431.02	40.5052685	-104.5273184	0.00	
15130.00†	90.000	269.216	6748.00	8567.25	-799.02	-8531.01	40.5052678	-104.5276780	0.00	
15230.00†	90.000	269.216	6748.00	8667.05	-800.39	-8631.00	40.5052670	-104.5280376	0.00	
15330.00†	90.000	269.216	6748.00	8766.84	-801.76	-8730.99	40.5052663	-104.5283972	0.00	
15430.00†	90.000	269.216	6748.00	8866.64	-803.12	-8830.98	40.5052655	-104.5287568	0.00	
15530.00†	90.000	269.216	6748.00	8966.44	-804.49	-8930.98	40.5052648	-104.5291164	0.00	
15630.00†	90.000	269.216	6748.00	9066.24	-805.86	-9030.97	40.5052640	-104.5294759	0.00	
15730.00†	90.000	269.216	6748.00	9166.03	-807.23	-9130.96	40.5052633	-104.5298355	0.00	
15830.00†	90.000	269.216	6748.00	9265.83	-808.60	-9230.95	40.5052625	-104.5301951	0.00	
15930.00†	90.000	269.216	6748.00	9365.63	-809.96	-9330.94	40.5052618	-104.5305547	0.00	
16030.00†	90.000	269.216	6748.00	9465.42	-811.33	-9430.93	40.5052610	-104.5309143	0.00	
16130.00†	90.000	269.216	6748.00	9565.22	-812.70	-9530.92	40.5052602	-104.5312739	0.00	
16230.00†	90.000	269.216	6748.00	9665.02	-814.07	-9630.91	40.5052595	-104.5316335	0.00	
16330.00†	90.000	269.216	6748.00	9764.82	-815.44	-9730.90	40.5052587	-104.5319931	0.00	
16430.00†	90.000	269.216	6748.00	9864.61	-816.80	-9830.89	40.5052580	-104.5323527	0.00	
16530.00†	90.000	269.216	6748.00	9964.41	-818.17	-9930.88	40.5052572	-104.5327123	0.00	
16630.00†	90.000	269.216	6748.00	10064.21	-819.54	-10030.87	40.5052564	-104.5330719	0.00	
16730.00†	90.000	269.216	6748.00	10164.01	-820.91	-10130.86	40.5052557	-104.5334315	0.00	
16830.00†	90.000	269.216	6748.00	10263.80	-822.28	-10230.85	40.5052549	-104.5337911	0.00	
16930.00†	90.000	269.216	6748.00	10363.60	-823.65	-10330.84	40.5052542	-104.5341507	0.00	
17030.00†	90.000	269.216	6748.00	10463.40	-825.01	-10430.84	40.5052534	-104.5345103	0.00	
17130.00†	90.000	269.216	6748.00	10563.20	-826.38	-10530.83	40.5052526	-104.5348699	0.00	
17230.00†	90.000	269.216	6748.00	10662.99	-827.75	-10630.82	40.5052519	-104.5352295	0.00	
17288.62	90.000	269.216	6748.00 <sup>‡</sup>	10721.50	-828.55	-10689.43	40.5052514	-104.5354403	0.00	BHL



Planned Wellpath Report

GABEL A10-675 (REV-A.0) PWP

Page 6 of 7



REFERENCE WELLPATH IDENTIFICATION			
Operator	NOBLE ENERGY, INC	Well	GABEL A10-675
Field	WELD COUNTY (NOBLE NAD 83 GRID)	API/Legal	
Facility	SEC.12-T06N-R64W	Wellbore	GABEL A10-675 PWB
Slot	SLOT#02 GABEL A10-675 (305'FNL & 2272'FEL,SEC.12)		

HOLE & CASING SECTIONS - Ref Wellbore: GABEL A10-675 PWB    Ref Wellpath: GABEL A10-675 (REV-A.0) PWP									
String/Diameter	Start MD [ft]	End MD [ft]	Interval [ft]	Start TVD [ft]	End TVD [ft]	Start N/S [ft]	Start E/W [ft]	End N/S [ft]	End E/W [ft]
9.625in Casing Surface	30.00	1950.00	1920.00	30.00	1950.00	0.00	0.00	0.00	0.00

TARGETS									
Name	MD [ft]	TVD [ft]	North [ft]	East [ft]	Grid East [US ft]	Grid North [US ft]	Latitude	Longitude	Shape
OGPD 2 SEC. 10-T06N-R64W	N/A	-1.00	14.76	16.52	3278923.07	1429205.68	40.5072400	-104.4969100	polygon
	2D Polygon: dimensions not calculated								
OGPD 2 SEC. 11-T06N-R64W	N/A	-1.00	14.76	16.52	3278923.07	1429205.68	40.5072400	-104.4969100	polygon
	2D Polygon: dimensions not calculated								
OGPD 2 SEC.12-T06N-R64W	N/A	-1.00	14.76	16.52	3278923.07	1429205.68	40.5072400	-104.4969100	polygon
	2D Polygon: dimensions not calculated								
2) GABEL A10-675 BHL Rev-1 (991'FSL & 2423'FEL,SEC.10)	17288.62	6748.00	-828.55	-10689.43	3268217.50	1428362.39	40.5052514	-104.5354403	point
1) GABEL A10-675 LP Rev-1 (990'FNL & 2444'FWL,SEC.12)	7162.14	6748.00	-690.01	-563.89	3278342.68	1428500.93	40.5053236	-104.4990257	point

SURVEY PROGRAM - Ref Wellbore: GABEL A10-675 PWB    Ref Wellpath: GABEL A10-675 (REV-A.0) PWP				
Start MD [ft]	End MD [ft]	Positional Uncertainty Model	Log Name/Comment	Wellbore
30.00	17288.62	OWSG MWD rev2 (MS+IFR1)		GABEL A10-675 PWB



Planned Wellpath Report

GABEL A10-675 (REV-A.0) PWP

Page 7 of 7



REFERENCE WELLPATH IDENTIFICATION			
Operator	NOBLE ENERGY, INC	Well	GABEL A10-675
Field	WELD COUNTY (NOBLE NAD 83 GRID)	API/Legal	
Facility	SEC.12-T06N-R64W	Wellbore	GABEL A10-675 PWB
Slot	SLOT#02 GABEL A10-675 (305'FNL & 2272'FEL,SEC.12)		

DESIGN COMMENTS				
MD [ft]	Inclination [°]	Azimuth [°]	TVD [ft]	Comment
30.00	0.000	173.055	30.00	SHL
2000.00	0.000	173.055	2000.00	End of Tangent
2430.46	8.609	173.055	2428.84	Build (XS)
6151.91	8.609	173.055	6108.36	KOP
7162.14	90.000	269.216	6748.00	LP/TPZ
17288.62	90.000	269.216	6748.00	BHL