

NOBLE ENERGY, INC

Location: COLORADO Slot: SLOT#01 GABEL A10-685 (290°FNL & 2256°FEL,SEC.12)

Field: WELD COUNTY (NOBLE NAD 83 GRID) Well: GABEL A10-685

Facility: SEC.12-T06N-R64W Wellbore: GABEL A10-685 PWB

Plot reference wellpath is GABEL A10-685 (REV-A.0) PWP

Grid System: NAD83 / Lambert Colorado SP, Northern Zone (501), US feet

True vertical depths are referenced to (4724°GL+30°KB = 4754°RKB) (RKB)

North Reference: Grid north

Reference wellpath measured depths are referenced to (4724°GL+30°KB = 4754°RKB) (RKB)

Scale: True distance

(4724°GL+30°KB = 4754°RKB) (RKB) to Mean Sea Level: 4754 feet

Coordinates are in feet referenced to Slot

Mean Sea Level to Ground level (At Slot: SLOT#01 GABEL A10-685 (290°FNL & 2256°FEL,SEC.12)): 0 feet

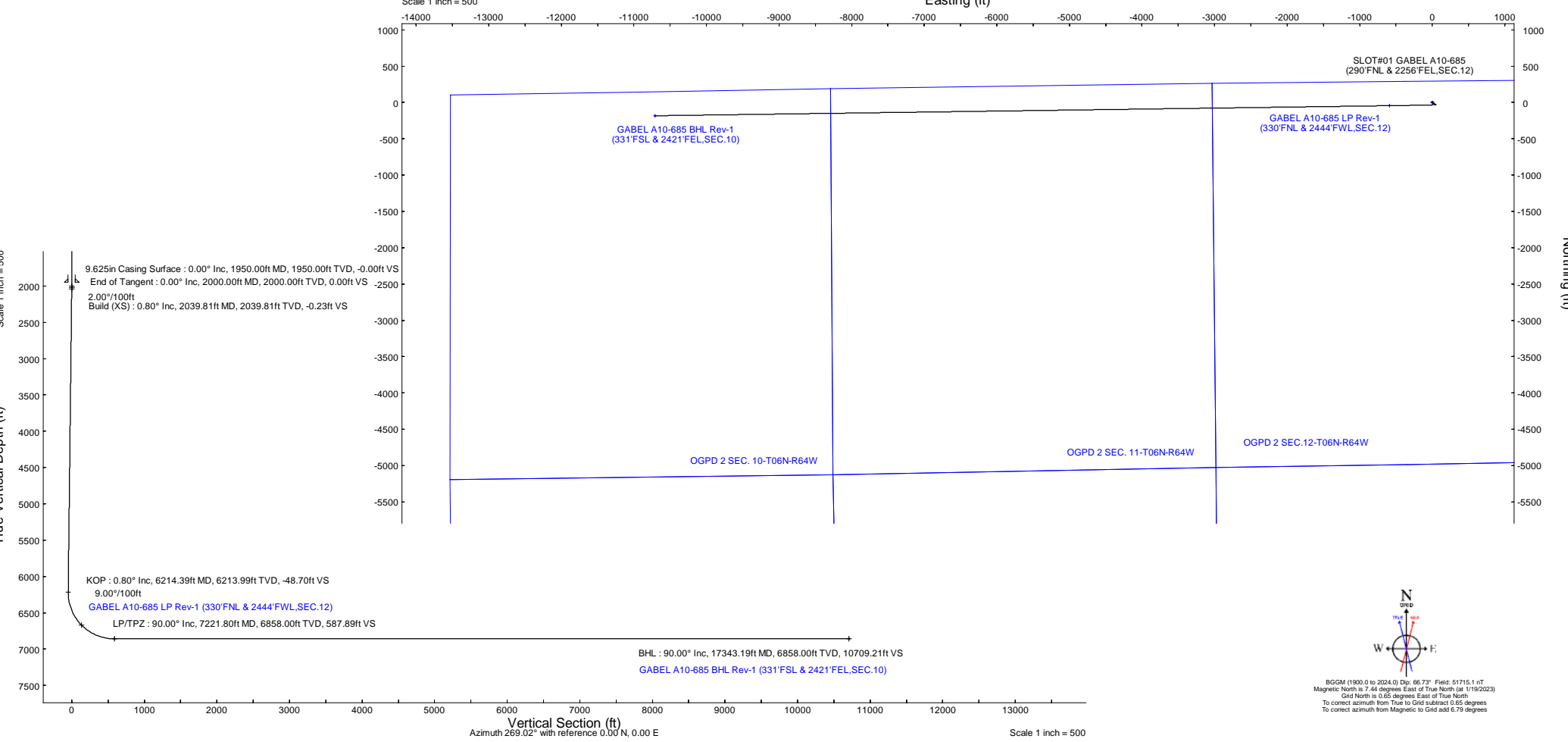
Depths are in feet

Offset wellpath MDs are referenced to each path's default MD datum

Created by: guenaler on 2023-01-20; Database: WellArchitectDB

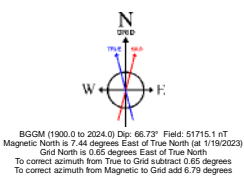
Location Information					
Facility Name			Grid East (US ft)	Grid North (US ft)	Latitude
SEC.12-T06N-R64W			3278923.071	1429205.676	40°30'26.0640"N
Slot			Grid East (US ft)	Grid North (US ft)	Latitude
SLOT#01 GABEL A10-685 (290°FNL & 2256°FEL,SEC.12)			3278923.071	1429205.676	40°30'26.0640"N
(4724°GL+30°KB = 4754°RKB) (RKB) to Ground level (At Slot: SLOT#01 GABEL A10-685 (290°FNL & 2256°FEL,SEC.12))			4754ft		
Mean Sea Level to Ground level (At Slot: SLOT#01 GABEL A10-685 (290°FNL & 2256°FEL,SEC.12))			0ft		
(4724°GL+30°KB = 4754°RKB) (RKB) to Mean Sea Level			4754ft		

Survey Program					
Start MD (ft)	End MD (ft)	Tool	Model	Log Name/Comment	Wellbore
30.00	17343.19	OWSG MWD rev2	OWSG MWD rev2 (MS+IFR1)		GABEL A10-685 PWB



Well Profile Data							
Design Comment	MD (ft)	Inc (°)	Az (°)	TVD (ft)	Local N (ft)	Local E (ft)	DLS (°/100ft)
SHL	30.00	0.000	122.343	30.00	0.00	0.00	0.00
End of Tangent	2000.00	0.000	122.343	2000.00	0.00	0.00	0.00
Build (XS)	2039.81	0.796	122.343	2039.81	-0.15	0.23	2.00
KOP	6214.39	0.796	122.343	6213.99	-31.18	49.24	0.00
LP/TPZ	7221.80	90.000	269.216	6858.00	-44.78	-587.21	9.00
BHL	17343.19	90.000	269.216	6858.00	-183.23	-10707.64	0.00

Targets							
Name	MD (ft)	TVD (ft)	Local N (ft)	Local E (ft)	Grid East (US ft)	Grid North (US ft)	Latitude
OGPD 2 SEC. 07-T07N-R63W	N/A	0.00	0.00	0.00	3278923.07	1429205.68	40°30'26.0640"N
OGPD 2 SEC. 08-T07N-R63W	N/A	0.00	0.00	0.00	3278923.07	1429205.68	40°30'26.0640"N
OGPD 2 SEC. 10-T06N-R64W	N/A	0.00	0.00	0.00	3278923.07	1429205.68	40°30'26.0640"N
OGPD 2 SEC. 11-T06N-R64W	N/A	0.00	0.00	0.00	3278923.07	1429205.68	40°30'26.0640"N
OGPD 2 SEC. 13-T06N-R64W HALF SECTION	N/A	0.00	0.00	0.00	3278923.07	1429205.68	40°30'26.0640"N
OGPD 2 SEC. 14-T06N-R64W HALF SECTION	N/A	0.00	0.00	0.00	3278923.07	1429205.68	40°30'26.0640"N
OGPD 2 SEC. 15-T06N-R64W HALF SECTION	N/A	0.00	0.00	0.00	3278923.07	1429205.68	40°30'26.0640"N
OGPD 2 SEC. 17-T07N-R63W HALF SECTION	N/A	0.00	0.00	0.00	3278923.07	1429205.68	40°30'26.0640"N
OGPD 2 SEC. 18-T07N-R63W HALF SECTION	N/A	0.00	0.00	0.00	3278923.07	1429205.68	40°30'26.0640"N
OGPD 2 SEC.12-T06N-R64W	N/A	0.00	0.00	0.00	3278923.07	1429205.68	40°30'26.0640"N
GABEL A10-685 BHL Rev1 (331°FSL & 2421°FEL,SEC.10)	17343.19	6858.00	-183.23	-10707.64	3268215.80	1429022.45	40°30'25.4274"N
GABEL A10-685 LP Rev1 (330°FNL & 2444°FWL,SEC.12)	7221.80	6858.00	-44.78	-587.21	3278335.88	1429160.90	40°30'25.6871"N



BGGM (1900.0 to 2024.0) Dip: 66.73° Field: 51715.1 nT  
Magnetic North is 7.44 degrees East of True North (at 1/19/2023)  
Grid North is 0.65 degrees East of True North  
To correct azimuth from True to Grid subtract 0.65 degrees  
To correct azimuth from Magnetic to Grid add 6.78 degrees



Planned Wellpath Report

GABEL A10-685 (REV-A.0) PWP

Page 1 of 9



REFERENCE WELLPATH IDENTIFICATION			
Operator	NOBLE ENERGY, INC	Well	GABEL A10-685
Field	WELD COUNTY (NOBLE NAD 83 GRID)	API/Legal	
Facility	SEC.12-T06N-R64W	Wellbore	GABEL A10-685 PWB
Slot	SLOT#01 GABEL A10-685 (290'FNL & 2256'FEL,SEC.12)		

REPORT SETUP INFORMATION			
Projection System	NAD83 / Lambert Colorado SP, Northern Zone (501), US feet	Software System	WellArchitect® 6.0
North Reference	Grid	User	Guenaler
Scale	0.999967	Report Generated	1/20/2023 at 8:52:27 PM
Convergence at slot	0.65° East	Database	WellArchitectDB

WELLPATH LOCATION						
	Local coordinates		Grid coordinates		Geographic coordinates	
	North[ft]	East[ft]	Easting[US ft]	Northing[US ft]	Latitude	Longitude
Slot Location	0.00	0.00	3278923.07	1429205.68	40.5072400°	-104.4969100°
Facility Reference Pt			3278923.07	1429205.68	40.5072400°	-104.4969100°
Field Reference Pt			3000000.00	4454105.15	48.7761986°	-105.5000000°

WELLPATH DATUM			
Calculation method	Minimum curvature	(4724'GL+30'KB = 4754'RKB) (RKB) to Facility Vertical Datum	4754.00ft
Horizontal Reference Pt	Slot	(4724'GL+30'KB = 4754'RKB) (RKB) to Mean Sea Level	4754.00ft
Vertical Reference Pt	(4724'GL+30'KB = 4754'RKB) (RKB)	(4724'GL+30'KB = 4754'RKB) (RKB) to Ground Level at Slot (SLOT#01 GABEL A10-685 (290'FNL & 2256'FEL,SEC.12))	4754.00ft
MD Reference Pt	(4724'GL+30'KB = 4754'RKB) (RKB)	Section Origin	N 0.00, E 0.00 ft
Field Vertical Reference	Mean Sea Level	Section Azimuth	269.02°



Planned Wellpath Report  
GABEL A10-685 (REV-A.0) PWP  
Page 2 of 9



REFERENCE WELLPATH IDENTIFICATION			
Operator	NOBLE ENERGY, INC	Well	GABEL A10-685
Field	WELD COUNTY (NOBLE NAD 83 GRID)	API/Legal	
Facility	SEC.12-T06N-R64W	Wellbore	GABEL A10-685 PWB
Slot	SLOT#01 GABEL A10-685 (290'FNL & 2256'FEL,SEC.12)		

WELLPATH DATA (180 stations) † = interpolated, ‡ = extrapolated station										
MD [ft]	Inclination [°]	Azimuth [°]	TVD [ft]	Vert Sect [ft]	North [ft]	East [ft]	Latitude	Longitude	DLS [°/100ft]	Comments
0.00†	0.000	122.343	0.00	0.00	0.00	0.00	40.5072400	-104.4969100	0.00	
30.00	0.000	122.343	30.00	0.00	0.00	0.00	40.5072400	-104.4969100	0.00	SHL
130.00†	0.000	122.343	130.00	0.00	0.00	0.00	40.5072400	-104.4969100	0.00	
230.00†	0.000	122.343	230.00	0.00	0.00	0.00	40.5072400	-104.4969100	0.00	
330.00†	0.000	122.343	330.00	0.00	0.00	0.00	40.5072400	-104.4969100	0.00	
430.00†	0.000	122.343	430.00	0.00	0.00	0.00	40.5072400	-104.4969100	0.00	
530.00†	0.000	122.343	530.00	0.00	0.00	0.00	40.5072400	-104.4969100	0.00	
630.00†	0.000	122.343	630.00	0.00	0.00	0.00	40.5072400	-104.4969100	0.00	
730.00†	0.000	122.343	730.00	0.00	0.00	0.00	40.5072400	-104.4969100	0.00	
830.00†	0.000	122.343	830.00	0.00	0.00	0.00	40.5072400	-104.4969100	0.00	
930.00†	0.000	122.343	930.00	0.00	0.00	0.00	40.5072400	-104.4969100	0.00	
1030.00†	0.000	122.343	1030.00	0.00	0.00	0.00	40.5072400	-104.4969100	0.00	
1130.00†	0.000	122.343	1130.00	0.00	0.00	0.00	40.5072400	-104.4969100	0.00	
1230.00†	0.000	122.343	1230.00	0.00	0.00	0.00	40.5072400	-104.4969100	0.00	
1330.00†	0.000	122.343	1330.00	0.00	0.00	0.00	40.5072400	-104.4969100	0.00	
1430.00†	0.000	122.343	1430.00	0.00	0.00	0.00	40.5072400	-104.4969100	0.00	
1530.00†	0.000	122.343	1530.00	0.00	0.00	0.00	40.5072400	-104.4969100	0.00	
1630.00†	0.000	122.343	1630.00	0.00	0.00	0.00	40.5072400	-104.4969100	0.00	
1730.00†	0.000	122.343	1730.00	0.00	0.00	0.00	40.5072400	-104.4969100	0.00	
1830.00†	0.000	122.343	1830.00	0.00	0.00	0.00	40.5072400	-104.4969100	0.00	
1930.00†	0.000	122.343	1930.00	0.00	0.00	0.00	40.5072400	-104.4969100	0.00	
2000.00	0.000	122.343	2000.00	0.00	0.00	0.00	40.5072400	-104.4969100	0.00	End of Tangent
2030.00†	0.600	122.343	2030.00	-0.13	-0.08	0.13	40.5072398	-104.4969095	2.00	
2039.81	0.796	122.343	2039.81	-0.23	-0.15	0.23	40.5072396	-104.4969092	2.00	Build (XS)
2130.00†	0.796	122.343	2129.99	-1.28	-0.82	1.29	40.5072377	-104.4969054	0.00	
2230.00†	0.796	122.343	2229.98	-2.44	-1.56	2.47	40.5072356	-104.4969012	0.00	
2330.00†	0.796	122.343	2329.97	-3.60	-2.31	3.64	40.5072336	-104.4968970	0.00	
2430.00†	0.796	122.343	2429.96	-4.76	-3.05	4.81	40.5072315	-104.4968928	0.00	
2530.00†	0.796	122.343	2529.95	-5.92	-3.79	5.99	40.5072294	-104.4968886	0.00	
2630.00†	0.796	122.343	2629.94	-7.08	-4.54	7.16	40.5072273	-104.4968844	0.00	
2730.00†	0.796	122.343	2729.93	-8.24	-5.28	8.34	40.5072253	-104.4968802	0.00	
2830.00†	0.796	122.343	2829.92	-9.41	-6.02	9.51	40.5072232	-104.4968760	0.00	
2930.00†	0.796	122.343	2929.91	-10.57	-6.77	10.68	40.5072211	-104.4968719	0.00	
3030.00†	0.796	122.343	3029.90	-11.73	-7.51	11.86	40.5072190	-104.4968677	0.00	
3130.00†	0.796	122.343	3129.89	-12.89	-8.25	13.03	40.5072169	-104.4968635	0.00	
3230.00†	0.796	122.343	3229.88	-14.05	-9.00	14.21	40.5072149	-104.4968593	0.00	
3330.00†	0.796	122.343	3329.87	-15.21	-9.74	15.38	40.5072128	-104.4968551	0.00	
3430.00†	0.796	122.343	3429.86	-16.37	-10.48	16.55	40.5072107	-104.4968509	0.00	
3530.00†	0.796	122.343	3529.85	-17.53	-11.23	17.73	40.5072086	-104.4968467	0.00	
3630.00†	0.796	122.343	3629.85	-18.69	-11.97	18.90	40.5072066	-104.4968425	0.00	
3730.00†	0.796	122.343	3729.84	-19.86	-12.71	20.08	40.5072045	-104.4968383	0.00	
3830.00†	0.796	122.343	3829.83	-21.02	-13.46	21.25	40.5072024	-104.4968341	0.00	
3930.00†	0.796	122.343	3929.82	-22.18	-14.20	22.42	40.5072003	-104.4968299	0.00	
4030.00†	0.796	122.343	4029.81	-23.34	-14.94	23.60	40.5071983	-104.4968258	0.00	
4130.00†	0.796	122.343	4129.80	-24.50	-15.69	24.77	40.5071962	-104.4968216	0.00	



Planned Wellpath Report

GABEL A10-685 (REV-A.0) PWP

Page 3 of 9



REFERENCE WELLPATH IDENTIFICATION			
Operator	NOBLE ENERGY, INC	Well	GABEL A10-685
Field	WELD COUNTY (NOBLE NAD 83 GRID)	API/Legal	
Facility	SEC.12-T06N-R64W	Wellbore	GABEL A10-685 PWB
Slot	SLOT#01 GABEL A10-685 (290'FNL & 2256'FEL,SEC.12)		

WELLPATH DATA (180 stations) † = interpolated, ‡ = extrapolated station										
MD [ft]	Inclination [°]	Azimuth [°]	TVD [ft]	Vert Sect [ft]	North [ft]	East [ft]	Latitude	Longitude	DLS [°/100ft]	Comments
4230.00†	0.796	122.343	4229.79	-25.66	-16.43	25.95	40.5071941	-104.4968174	0.00	
4330.00†	0.796	122.343	4329.78	-26.82	-17.17	27.12	40.5071920	-104.4968132	0.00	
4430.00†	0.796	122.343	4429.77	-27.98	-17.92	28.29	40.5071899	-104.4968090	0.00	
4530.00†	0.796	122.343	4529.76	-29.14	-18.66	29.47	40.5071879	-104.4968048	0.00	
4630.00†	0.796	122.343	4629.75	-30.31	-19.40	30.64	40.5071858	-104.4968006	0.00	
4730.00†	0.796	122.343	4729.74	-31.47	-20.15	31.82	40.5071837	-104.4967964	0.00	
4830.00†	0.796	122.343	4829.73	-32.63	-20.89	32.99	40.5071816	-104.4967922	0.00	
4930.00†	0.796	122.343	4929.72	-33.79	-21.63	34.16	40.5071796	-104.4967880	0.00	
5030.00†	0.796	122.343	5029.71	-34.95	-22.38	35.34	40.5071775	-104.4967838	0.00	
5130.00†	0.796	122.343	5129.70	-36.11	-23.12	36.51	40.5071754	-104.4967796	0.00	
5230.00†	0.796	122.343	5229.69	-37.27	-23.86	37.69	40.5071733	-104.4967755	0.00	
5330.00†	0.796	122.343	5329.68	-38.43	-24.61	38.86	40.5071713	-104.4967713	0.00	
5430.00†	0.796	122.343	5429.67	-39.59	-25.35	40.03	40.5071692	-104.4967671	0.00	
5530.00†	0.796	122.343	5529.66	-40.76	-26.09	41.21	40.5071671	-104.4967629	0.00	
5630.00†	0.796	122.343	5629.65	-41.92	-26.84	42.38	40.5071650	-104.4967587	0.00	
5730.00†	0.796	122.343	5729.64	-43.08	-27.58	43.56	40.5071629	-104.4967545	0.00	
5830.00†	0.796	122.343	5829.63	-44.24	-28.32	44.73	40.5071609	-104.4967503	0.00	
5930.00†	0.796	122.343	5929.62	-45.40	-29.07	45.90	40.5071588	-104.4967461	0.00	
6030.00†	0.796	122.343	6029.61	-46.56	-29.81	47.08	40.5071567	-104.4967419	0.00	
6130.00†	0.796	122.343	6129.60	-47.72	-30.55	48.25	40.5071546	-104.4967377	0.00	
6214.39	0.796	122.343	6213.99	-48.70	-31.18	49.24	40.5071529	-104.4967342	0.00	KOP
6230.00†	0.856	238.684	6229.59	-48.69	-31.30	49.23	40.5071526	-104.4967342	9.00	
6330.00†	9.747	266.682	6329.07	-39.57	-32.18	40.13	40.5071504	-104.4967670	9.00	
6430.00†	18.743	267.934	6425.90	-15.00	-33.25	15.57	40.5071483	-104.4968554	9.00	
6530.00†	27.741	268.389	6517.69	24.42	-34.49	-23.83	40.5071461	-104.4969971	9.00	
6630.00†	36.740	268.633	6602.18	77.71	-35.86	-77.11	40.5071440	-104.4971887	9.00	
6730.00†	45.739	268.792	6677.30	143.56	-37.33	-142.94	40.5071420	-104.4974255	9.00	
6830.00†	54.739	268.909	6741.19	220.35	-38.87	-219.72	40.5071401	-104.4977017	9.00	
6930.00†	63.739	269.002	6792.29	306.20	-40.43	-305.55	40.5071385	-104.4980104	9.00	
7030.00†	72.738	269.081	6829.33	398.97	-41.98	-398.31	40.5071371	-104.4983440	9.00	
7130.00†	81.738	269.153	6851.39	496.40	-43.48	-495.73	40.5071360	-104.4986943	9.00	
7221.80	90.000	269.216	6858.00 <sup>†</sup>	587.89	-44.78	-587.21	40.5071353	-104.4990233	9.00	LP/TPZ
7230.00†	90.000	269.216	6858.00	596.08	-44.89	-595.40	40.5071353	-104.4990528	0.00	
7330.00†	90.000	269.216	6858.00	696.08	-46.26	-695.39	40.5071346	-104.4994124	0.00	
7430.00†	90.000	269.216	6858.00	796.08	-47.63	-795.38	40.5071339	-104.4997720	0.00	
7530.00†	90.000	269.216	6858.00	896.08	-49.00	-895.38	40.5071333	-104.5001316	0.00	
7630.00†	90.000	269.216	6858.00	996.08	-50.36	-995.37	40.5071326	-104.5004912	0.00	
7730.00†	90.000	269.216	6858.00	1096.08	-51.73	-1095.36	40.5071320	-104.5008508	0.00	
7830.00†	90.000	269.216	6858.00	1196.08	-53.10	-1195.35	40.5071313	-104.5012105	0.00	
7930.00†	90.000	269.216	6858.00	1296.08	-54.47	-1295.34	40.5071306	-104.5015701	0.00	
8030.00†	90.000	269.216	6858.00	1396.08	-55.84	-1395.33	40.5071300	-104.5019297	0.00	
8130.00†	90.000	269.216	6858.00	1496.08	-57.20	-1495.32	40.5071293	-104.5022893	0.00	
8230.00†	90.000	269.216	6858.00	1596.08	-58.57	-1595.31	40.5071286	-104.5026489	0.00	
8330.00†	90.000	269.216	6858.00	1696.08	-59.94	-1695.30	40.5071280	-104.5030085	0.00	
8430.00†	90.000	269.216	6858.00	1796.08	-61.31	-1795.29	40.5071273	-104.5033681	0.00	



Planned Wellpath Report  
GABEL A10-685 (REV-A.0) PWP  
Page 4 of 9



REFERENCE WELLPATH IDENTIFICATION			
Operator	NOBLE ENERGY, INC	Well	GABEL A10-685
Field	WELD COUNTY (NOBLE NAD 83 GRID)	API/Legal	
Facility	SEC.12-T06N-R64W	Wellbore	GABEL A10-685 PWB
Slot	SLOT#01 GABEL A10-685 (290'FNL & 2256'FEL,SEC.12)		

WELLPATH DATA (180 stations) † = interpolated, ‡ = extrapolated station										
MD [ft]	Inclination [°]	Azimuth [°]	TVD [ft]	Vert Sect [ft]	North [ft]	East [ft]	Latitude	Longitude	DLS [°/100ft]	Comments
8530.00†	90.000	269.216	6858.00	1896.08	-62.67	-1895.28	40.5071266	-104.5037277	0.00	
8630.00†	90.000	269.216	6858.00	1996.08	-64.04	-1995.27	40.5071260	-104.5040873	0.00	
8730.00†	90.000	269.216	6858.00	2096.08	-65.41	-2095.26	40.5071253	-104.5044469	0.00	
8830.00†	90.000	269.216	6858.00	2196.07	-66.78	-2195.25	40.5071246	-104.5048065	0.00	
8930.00†	90.000	269.216	6858.00	2296.07	-68.15	-2295.24	40.5071239	-104.5051661	0.00	
9030.00†	90.000	269.216	6858.00	2396.07	-69.51	-2395.23	40.5071233	-104.5055257	0.00	
9130.00†	90.000	269.216	6858.00	2496.07	-70.88	-2495.23	40.5071226	-104.5058854	0.00	
9230.00†	90.000	269.216	6858.00	2596.07	-72.25	-2595.22	40.5071219	-104.5062450	0.00	
9330.00†	90.000	269.216	6858.00	2696.07	-73.62	-2695.21	40.5071212	-104.5066046	0.00	
9430.00†	90.000	269.216	6858.00	2796.07	-74.99	-2795.20	40.5071205	-104.5069642	0.00	
9530.00†	90.000	269.216	6858.00	2896.07	-76.35	-2895.19	40.5071199	-104.5073238	0.00	
9630.00†	90.000	269.216	6858.00	2996.07	-77.72	-2995.18	40.5071192	-104.5076834	0.00	
9730.00†	90.000	269.216	6858.00	3096.07	-79.09	-3095.17	40.5071185	-104.5080430	0.00	
9830.00†	90.000	269.216	6858.00	3196.07	-80.46	-3195.16	40.5071178	-104.5084026	0.00	
9930.00†	90.000	269.216	6858.00	3296.07	-81.83	-3295.15	40.5071171	-104.5087622	0.00	
10030.00†	90.000	269.216	6858.00	3396.07	-83.19	-3395.14	40.5071164	-104.5091218	0.00	
10130.00†	90.000	269.216	6858.00	3496.07	-84.56	-3495.13	40.5071157	-104.5094814	0.00	
10230.00†	90.000	269.216	6858.00	3596.07	-85.93	-3595.12	40.5071151	-104.5098410	0.00	
10330.00†	90.000	269.216	6858.00	3696.07	-87.30	-3695.11	40.5071144	-104.5102006	0.00	
10430.00†	90.000	269.216	6858.00	3796.07	-88.66	-3795.10	40.5071137	-104.5105603	0.00	
10530.00†	90.000	269.216	6858.00	3896.06	-90.03	-3895.09	40.5071130	-104.5109199	0.00	
10630.00†	90.000	269.216	6858.00	3996.06	-91.40	-3995.09	40.5071123	-104.5112795	0.00	
10730.00†	90.000	269.216	6858.00	4096.06	-92.77	-4095.08	40.5071116	-104.5116391	0.00	
10830.00†	90.000	269.216	6858.00	4196.06	-94.14	-4195.07	40.5071109	-104.5119987	0.00	
10930.00†	90.000	269.216	6858.00	4296.06	-95.50	-4295.06	40.5071102	-104.5123583	0.00	
11030.00†	90.000	269.216	6858.00	4396.06	-96.87	-4395.05	40.5071095	-104.5127179	0.00	
11130.00†	90.000	269.216	6858.00	4496.06	-98.24	-4495.04	40.5071088	-104.5130775	0.00	
11230.00†	90.000	269.216	6858.00	4596.06	-99.61	-4595.03	40.5071081	-104.5134371	0.00	
11330.00†	90.000	269.216	6858.00	4696.06	-100.98	-4695.02	40.5071074	-104.5137967	0.00	
11430.00†	90.000	269.216	6858.00	4796.06	-102.34	-4795.01	40.5071067	-104.5141563	0.00	
11530.00†	90.000	269.216	6858.00	4896.06	-103.71	-4895.00	40.5071060	-104.5145159	0.00	
11630.00†	90.000	269.216	6858.00	4996.06	-105.08	-4994.99	40.5071053	-104.5148755	0.00	
11730.00†	90.000	269.216	6858.00	5096.06	-106.45	-5094.98	40.5071046	-104.5152352	0.00	
11830.00†	90.000	269.216	6858.00	5196.06	-107.82	-5194.97	40.5071039	-104.5155948	0.00	
11930.00†	90.000	269.216	6858.00	5296.06	-109.18	-5294.96	40.5071032	-104.5159544	0.00	
12030.00†	90.000	269.216	6858.00	5396.06	-110.55	-5394.95	40.5071025	-104.5163140	0.00	
12130.00†	90.000	269.216	6858.00	5496.06	-111.92	-5494.94	40.5071018	-104.5166736	0.00	
12230.00†	90.000	269.216	6858.00	5596.05	-113.29	-5594.94	40.5071010	-104.5170332	0.00	
12330.00†	90.000	269.216	6858.00	5696.05	-114.65	-5694.93	40.5071003	-104.5173928	0.00	
12430.00†	90.000	269.216	6858.00	5796.05	-116.02	-5794.92	40.5070996	-104.5177524	0.00	
12530.00†	90.000	269.216	6858.00	5896.05	-117.39	-5894.91	40.5070989	-104.5181120	0.00	
12630.00†	90.000	269.216	6858.00	5996.05	-118.76	-5994.90	40.5070982	-104.5184716	0.00	
12730.00†	90.000	269.216	6858.00	6096.05	-120.13	-6094.89	40.5070975	-104.5188312	0.00	
12830.00†	90.000	269.216	6858.00	6196.05	-121.49	-6194.88	40.5070967	-104.5191908	0.00	
12930.00†	90.000	269.216	6858.00	6296.05	-122.86	-6294.87	40.5070960	-104.5195504	0.00	





Planned Wellpath Report  
GABEL A10-685 (REV-A.0) PWP  
Page 5 of 9



REFERENCE WELLPATH IDENTIFICATION			
Operator	NOBLE ENERGY, INC	Well	GABEL A10-685
Field	WELD COUNTY (NOBLE NAD 83 GRID)	API/Legal	
Facility	SEC.12-T06N-R64W	Wellbore	GABEL A10-685 PWB
Slot	SLOT#01 GABEL A10-685 (290'FNL & 2256'FEL,SEC.12)		

WELLPATH DATA (180 stations) † = interpolated, ‡ = extrapolated station										
MD [ft]	Inclination [°]	Azimuth [°]	TVD [ft]	Vert Sect [ft]	North [ft]	East [ft]	Latitude	Longitude	DLS [°/100ft]	Comments
13030.00†	90.000	269.216	6858.00	6396.05	-124.23	-6394.86	40.5070953	-104.5199100	0.00	
13130.00†	90.000	269.216	6858.00	6496.05	-125.60	-6494.85	40.5070946	-104.5202697	0.00	
13230.00†	90.000	269.216	6858.00	6596.05	-126.97	-6594.84	40.5070939	-104.5206293	0.00	
13330.00†	90.000	269.216	6858.00	6696.05	-128.33	-6694.83	40.5070931	-104.5209889	0.00	
13430.00†	90.000	269.216	6858.00	6796.05	-129.70	-6794.82	40.5070924	-104.5213485	0.00	
13530.00†	90.000	269.216	6858.00	6896.05	-131.07	-6894.81	40.5070917	-104.5217081	0.00	
13630.00†	90.000	269.216	6858.00	6996.05	-132.44	-6994.80	40.5070910	-104.5220677	0.00	
13730.00†	90.000	269.216	6858.00	7096.05	-133.80	-7094.79	40.5070902	-104.5224273	0.00	
13830.00†	90.000	269.216	6858.00	7196.05	-135.17	-7194.79	40.5070895	-104.5227869	0.00	
13930.00†	90.000	269.216	6858.00	7296.04	-136.54	-7294.78	40.5070888	-104.5231465	0.00	
14030.00†	90.000	269.216	6858.00	7396.04	-137.91	-7394.77	40.5070880	-104.5235061	0.00	
14130.00†	90.000	269.216	6858.00	7496.04	-139.28	-7494.76	40.5070873	-104.5238657	0.00	
14230.00†	90.000	269.216	6858.00	7596.04	-140.64	-7594.75	40.5070866	-104.5242253	0.00	
14330.00†	90.000	269.216	6858.00	7696.04	-142.01	-7694.74	40.5070858	-104.5245849	0.00	
14430.00†	90.000	269.216	6858.00	7796.04	-143.38	-7794.73	40.5070851	-104.5249445	0.00	
14530.00†	90.000	269.216	6858.00	7896.04	-144.75	-7894.72	40.5070844	-104.5253042	0.00	
14630.00†	90.000	269.216	6858.00	7996.04	-146.12	-7994.71	40.5070836	-104.5256638	0.00	
14730.00†	90.000	269.216	6858.00	8096.04	-147.48	-8094.70	40.5070829	-104.5260234	0.00	
14830.00†	90.000	269.216	6858.00	8196.04	-148.85	-8194.69	40.5070822	-104.5263830	0.00	
14930.00†	90.000	269.216	6858.00	8296.04	-150.22	-8294.68	40.5070814	-104.5267426	0.00	
15030.00†	90.000	269.216	6858.00	8396.04	-151.59	-8394.67	40.5070807	-104.5271022	0.00	
15130.00†	90.000	269.216	6858.00	8496.04	-152.96	-8494.66	40.5070799	-104.5274618	0.00	
15230.00†	90.000	269.216	6858.00	8596.04	-154.32	-8594.65	40.5070792	-104.5278214	0.00	
15330.00†	90.000	269.216	6858.00	8696.04	-155.69	-8694.65	40.5070784	-104.5281810	0.00	
15430.00†	90.000	269.216	6858.00	8796.04	-157.06	-8794.64	40.5070777	-104.5285406	0.00	
15530.00†	90.000	269.216	6858.00	8896.04	-158.43	-8894.63	40.5070769	-104.5289002	0.00	
15630.00†	90.000	269.216	6858.00	8996.03	-159.79	-8994.62	40.5070762	-104.5292598	0.00	
15730.00†	90.000	269.216	6858.00	9096.03	-161.16	-9094.61	40.5070754	-104.5296194	0.00	
15830.00†	90.000	269.216	6858.00	9196.03	-162.53	-9194.60	40.5070747	-104.5299790	0.00	
15930.00†	90.000	269.216	6858.00	9296.03	-163.90	-9294.59	40.5070739	-104.5303387	0.00	
16030.00†	90.000	269.216	6858.00	9396.03	-165.27	-9394.58	40.5070732	-104.5306983	0.00	
16130.00†	90.000	269.216	6858.00	9496.03	-166.63	-9494.57	40.5070724	-104.5310579	0.00	
16230.00†	90.000	269.216	6858.00	9596.03	-168.00	-9594.56	40.5070717	-104.5314175	0.00	
16330.00†	90.000	269.216	6858.00	9696.03	-169.37	-9694.55	40.5070709	-104.5317771	0.00	
16430.00†	90.000	269.216	6858.00	9796.03	-170.74	-9794.54	40.5070702	-104.5321367	0.00	
16530.00†	90.000	269.216	6858.00	9896.03	-172.11	-9894.53	40.5070694	-104.5324963	0.00	
16630.00†	90.000	269.216	6858.00	9996.03	-173.47	-9994.52	40.5070686	-104.5328559	0.00	
16730.00†	90.000	269.216	6858.00	10096.03	-174.84	-10094.51	40.5070679	-104.5332155	0.00	
16830.00†	90.000	269.216	6858.00	10196.03	-176.21	-10194.50	40.5070671	-104.5335751	0.00	
16930.00†	90.000	269.216	6858.00	10296.03	-177.58	-10294.50	40.5070663	-104.5339347	0.00	
17030.00†	90.000	269.216	6858.00	10396.03	-178.95	-10394.49	40.5070656	-104.5342943	0.00	
17130.00†	90.000	269.216	6858.00	10496.03	-180.31	-10494.48	40.5070648	-104.5346539	0.00	
17230.00†	90.000	269.216	6858.00	10596.03	-181.68	-10594.47	40.5070640	-104.5350135	0.00	
17330.00†	90.000	269.216	6858.00	10696.02	-183.05	-10694.46	40.5070633	-104.5353732	0.00	
17343.19	90.000	269.216	6858.00 <sup>2</sup>	10709.21	-183.23	-10707.64	40.5070632	-104.5354206	0.00	BHL



Planned Wellpath Report

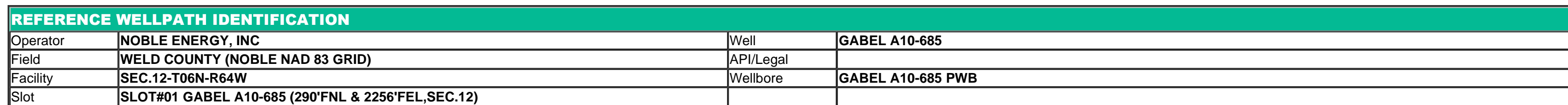
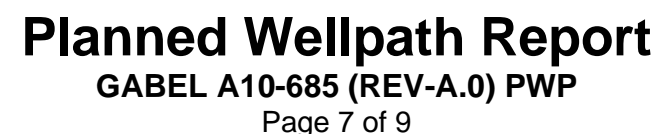
GABEL A10-685 (REV-A.0) PWP

Page 6 of 9



REFERENCE WELLPATH IDENTIFICATION			
Operator	NOBLE ENERGY, INC	Well	GABEL A10-685
Field	WELD COUNTY (NOBLE NAD 83 GRID)	API/Legal	
Facility	SEC.12-T06N-R64W	Wellbore	GABEL A10-685 PWB
Slot	SLOT#01 GABEL A10-685 (290'FNL & 2256'FEL,SEC.12)		

HOLE & CASING SECTIONS - Ref Wellbore: GABEL A10-685 PWB      Ref Wellpath: GABEL A10-685 (REV-A.0) PWP									
String/Diameter	Start MD [ft]	End MD [ft]	Interval [ft]	Start TVD [ft]	End TVD [ft]	Start N/S [ft]	Start E/W [ft]	End N/S [ft]	End E/W [ft]
9.625in Casing Surface	30.00	1950.00	1920.00	30.00	1950.00	0.00	0.00	0.00	0.00



TARGETS									
Name	MD [ft]	TVD [ft]	North [ft]	East [ft]	Grid East [US ft]	Grid North [US ft]	Latitude	Longitude	Shape
OGPD 2 SEC. 07-T07N-R63W	N/A	0.00	0.00	0.00	3278923.07	1429205.68	40.5072400	-104.4969100	polygon
	2D Polygon: dimensions not calculated								
OGPD 2 SEC. 08-T07N-R63W	N/A	0.00	0.00	0.00	3278923.07	1429205.68	40.5072400	-104.4969100	polygon
	2D Polygon: dimensions not calculated								
OGPD 2 SEC. 10-T06N-R64W	N/A	0.00	0.00	0.00	3278923.07	1429205.68	40.5072400	-104.4969100	polygon
	2D Polygon: dimensions not calculated								
OGPD 2 SEC. 11-T06N-R64W	N/A	0.00	0.00	0.00	3278923.07	1429205.68	40.5072400	-104.4969100	polygon
	2D Polygon: dimensions not calculated								
OGPD 2 SEC. 13-T06N-R64W HALF SECTION	N/A	0.00	0.00	0.00	3278923.07	1429205.68	40.5072400	-104.4969100	polygon
	2D Polygon: dimensions not calculated								
OGPD 2 SEC. 14-T06N-R64W HALF SECTION	N/A	0.00	0.00	0.00	3278923.07	1429205.68	40.5072400	-104.4969100	polygon
	2D Polygon: dimensions not calculated								
OGPD 2 SEC. 15-T06N-R64W HALF SECTION	N/A	0.00	0.00	0.00	3278923.07	1429205.68	40.5072400	-104.4969100	polygon
	2D Polygon: dimensions not calculated								
OGPD 2 SEC. 17-T07N-R63W HALF SECTION	N/A	0.00	0.00	0.00	3278923.07	1429205.68	40.5072400	-104.4969100	polygon
	2D Polygon: dimensions not calculated								
OGPD 2 SEC. 18-T07N-R63W HALF SECTION	N/A	0.00	0.00	0.00	3278923.07	1429205.68	40.5072400	-104.4969100	polygon
	2D Polygon: dimensions not calculated								
OGPD 2 SEC.12-T06N-R64W	N/A	0.00	0.00	0.00	3278923.07	1429205.68	40.5072400	-104.4969100	polygon
	2D Polygon: dimensions not calculated								
2) GABEL A10-685 BHL Rev-1 (331'FSL & 2421'FEL,SEC.10)	17343.19	6858.00	-183.23	-10707.64	3268215.80	1429022.45	40.5070632	-104.5354206	point
1) GABEL A10-685 LP Rev-1 (330'FNL & 2444'FWL,SEC.12)	7221.80	6858.00	-44.78	-587.21	3278335.88	1429160.90	40.5071353	-104.4990233	point





Planned Wellpath Report

GABEL A10-685 (REV-A.0) PWP

Page 8 of 9



REFERENCE WELLPATH IDENTIFICATION			
Operator	NOBLE ENERGY, INC	Well	GABEL A10-685
Field	WELD COUNTY (NOBLE NAD 83 GRID)	API/Legal	
Facility	SEC.12-T06N-R64W	Wellbore	GABEL A10-685 PWB
Slot	SLOT#01 GABEL A10-685 (290'FNL & 2256'FEL,SEC.12)		

SURVEY PROGRAM - Ref Wellbore: GABEL A10-685 PWB    Ref Wellpath: GABEL A10-685 (REV-A.0) PWP				
Start MD [ft]	End MD [ft]	Positional Uncertainty Model	Log Name/Comment	Wellbore
30.00	17343.19	OWSG MWD rev2 (MS+IFR1)		GABEL A10-685 PWB



Planned Wellpath Report

GABEL A10-685 (REV-A.0) PWP

Page 9 of 9



REFERENCE WELLPATH IDENTIFICATION			
Operator	NOBLE ENERGY, INC	Well	GABEL A10-685
Field	WELD COUNTY (NOBLE NAD 83 GRID)	API/Legal	
Facility	SEC.12-T06N-R64W	Wellbore	GABEL A10-685 PWB
Slot	SLOT#01 GABEL A10-685 (290'FNL & 2256'FEL,SEC.12)		

DESIGN COMMENTS				
MD [ft]	Inclination [°]	Azimuth [°]	TVD [ft]	Comment
30.00	0.000	122.343	30.00	SHL
2000.00	0.000	122.343	2000.00	End of Tangent
2039.81	0.796	122.343	2039.81	Build (XS)
6214.39	0.796	122.343	6213.99	KOP
7221.80	90.000	269.216	6858.00	LP/TPZ
17343.19	90.000	269.216	6858.00	BHL