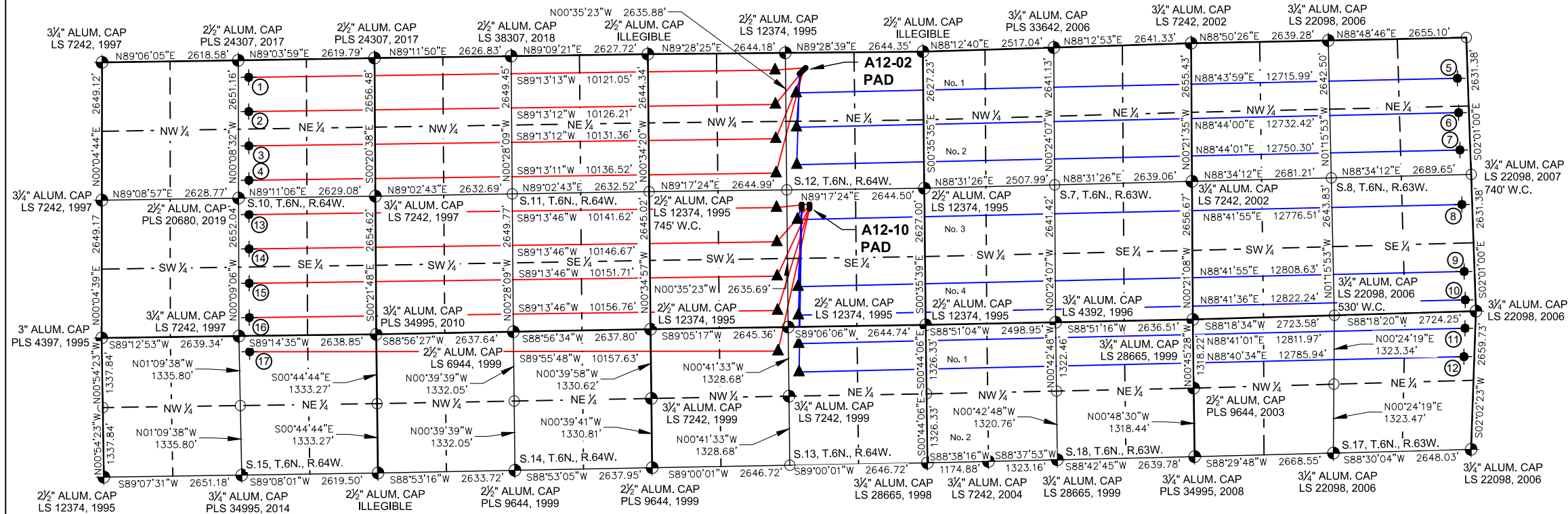
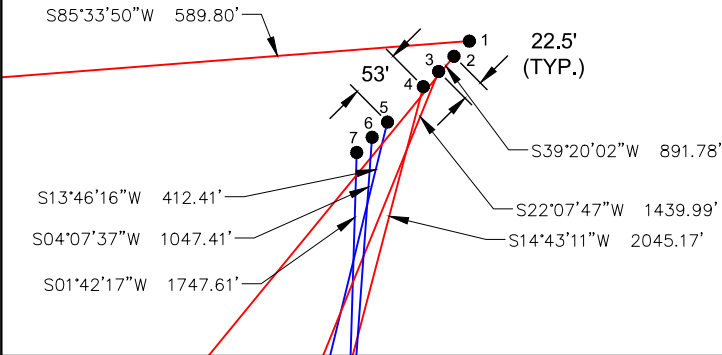


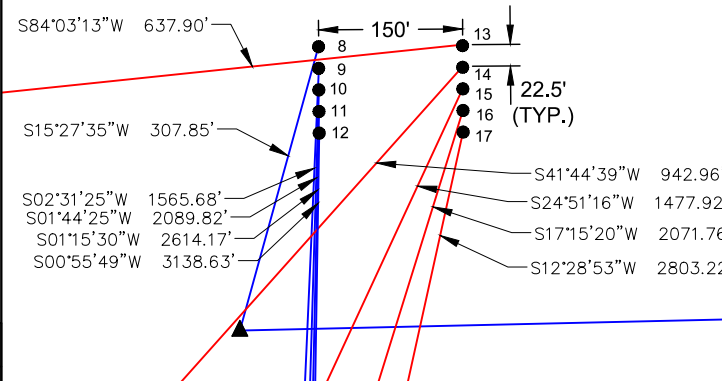
A12-02 PAD & A12-10 PAD
MULTI-WELL LOCATION PLAT / MULTI-WELL PLAN
T6N R64W SECTION 12



PROPOSED WELLBORE DIRECTION DATA
A12-02 PAD
SLOTS 1-7



PROPOSED WELLBORE DIRECTION DATA
A12-10 PAD
SLOTS 8-17



SURFACE HOLE LOCATION									TOP OF PRODUCTIVE ZONE		BOTTOM HOLE LOCATION	
SLOT	WELL NAME	LATITUDE	LONGITUDE	FOOTAGE		QTR-QTR	ELEV.	PDOP	FOOTAGE		FOOTAGE	
1	GABEL A10-685	40.507242°N	104.496907°W	290' FNL	2256' FEL	NWNE	4724'	1.5	330' FNL	2444' FWL	330' FNL	2421' FEL
2	GABEL A10-675	40.507199°N	104.496965°W	305' FNL	2272' FEL	NWNE	4723'	1.5	990' FNL	2444' FWL	990' FNL	2423' FEL
3	GABEL A10-665	40.507156°N	104.497023°W	321' FNL	2288' FEL	NWNE	4722'	1.5	1650' FNL	2445' FWL	1650' FNL	2426' FEL
4	GABEL A10-655	40.507113°N	104.497081°W	337' FNL	2304' FEL	NWNE	4721'	1.4	2310' FNL	2445' FWL	2310' FNL	2428' FEL
5	GABEL A12-678	40.507013°N	104.497217°W	373' FNL	2342' FEL	NWNE	4721'	1.5	773' FNL	2444' FEL	780' FNL	200' FEL
6	GABEL A12-668	40.506970°N	104.497275°W	389' FNL	2358' FEL	NWNE	4720'	1.5	1433' FNL	2444' FEL	1440' FNL	200' FEL
7	GABEL A12-657	40.506927°N	104.497334°W	405' FNL	2374' FEL	NWNE	4720'	1.5	2151' FNL	2444' FEL	2158' FNL	200' FEL
8	GABEL A12-641	40.500047°N	104.497288°W	2358' FSL	2359' FEL	NWSE	4718'	1.5	2063' FSL	2445' FEL	2058' FSL	200' FEL
9	GABEL A12-622	40.499985°N	104.497289°W	2336' FSL	2359' FEL	NWSE	4717'	1.5	773' FSL	2445' FEL	768' FSL	200' FEL
10	GABEL A12-613	40.499923°N	104.497289°W	2313' FSL	2360' FEL	NWSE	4717'	1.5	226' FSL	2445' FEL	222' FSL	200' FEL
11	GABEL A13-685	40.499862°N	104.497289°W	2291' FSL	2360' FEL	NWSE	4715'	1.5	321' FNL	2445' FEL	323' FNL	200' FEL
12	GABEL A13-677	40.499800°N	104.497290°W	2268' FSL	2360' FEL	NWSE	4714'	1.6	869' FNL	2445' FEL	868' FNL	200' FEL
13	GABEL A10-645	40.500045°N	104.496749°W	2357' FSL	2209' FEL	NWSE	4715'	1.6	2301' FSL	2445' FWL	2333' FSL	2430' FEL
14	GABEL A10-635	40.499983°N	104.496749°W	2335' FSL	2209' FEL	NWSE	4716'	1.6	1641' FSL	2445' FWL	1673' FSL	2433' FEL
15	GABEL A10-625	40.499922°N	104.496750°W	2312' FSL	2210' FEL	NWSE	4716'	1.6	981' FSL	2445' FWL	1013' FSL	2435' FEL
16	GABEL A10-615	40.499860°N	104.496750°W	2290' FSL	2210' FEL	NWSE	4716'	1.6	321' FSL	2445' FWL	353' FSL	2438' FEL
17	GABEL A15-685	40.499798°N	104.496750°W	2267' FSL	2210' FEL	NWSE	4715'	1.6	460' FNL	2446' FWL	304' FNL	2437' FEL

Notes:
1) All bearings are Grid Bearings of the Colorado State Plane Coordinate System, North Zone, North American Datum 1983/2011. The lineal dimensions as shown herein are grid distances based upon the "U.S. Survey Foot." To get ground distances multiply shown distance by 1.000256.
2) Distances are measured at 90° from section line of the Sixth Principal Meridian, County of Weld, State of Colorado.
3) Ground elevations are based on an observed GPS elevation (NAVD 1988 DATUM).
4) Surface use: A12-02 PAD "IRRIGATED CROP", A12-10 PAD "RANGELAND"
5) Instrument Operator: ELIOT KERSHNER
6) This map does not represent a boundary survey.



FIELD DATE: 08-14-19
DRAWING DATE: 11-28-22
DRAWN BY: CSG
CHECKED BY: HJL

SURFACE LOCATION:
SEC. 12, T6N, R64W, 6TH P.M.
WELD COUNTY, COLORADO

DISCLAIMER:
THIS PLOT DOES NOT REPRESENT A MONUMENTED LAND SURVEY AND SHOULD NOT BE RELIED UPON TO DETERMINE BOUNDARY LINES, PROPERTY OWNERSHIP OR OTHER PROPERTY INTERESTS. PARCEL LINES, IF DEPICTED HAVE NOT BEEN FIELD VERIFIED AND MAY BE BASED UPON PUBLICLY AVAILABLE DATA THAT ALSO HAS NOT BEEN INDEPENDENTLY VERIFIED.

PUBLICLY AVAILABLE DATA SOURCES HAVE NOT BEEN INDEPENDENTLY VERIFIED BY ASCENT.

