



# **Bayswater Exploration & Production LLC**

## **SURFACE POST JOB REPORT**

**Ruby West #5 05-123-51753**  
**S:7 T:7N R:65W Weld CO**

CallSheet #: 82852  
Proposal #: 62258



**SURFACE Post Job Report**

**Attention:** Trevor Smith | (720) 335-9045 | [trevor.smith@iptenergyservices.com](mailto:trevor.smith@iptenergyservices.com)  
Bayswater Exploration & Production LLC  
730 17TH STREET | DENVER, CO 80202

---

Dear Trevor Smith,

Thank you for the opportunity to provide cementing services on this well. American Cementing strives to achieve complete customer satisfaction. If you have any questions regarding the services or data provided, please contact American Cementing at any time.

Sincerely,

**Jason Creel**

Field Engineer Lead | (307) 256-0306 | [jason.creel@americacementing.com](mailto:jason.creel@americacementing.com)

**Field Office**      1716 E Allison Rd, Cheyenne, WY 82007  
Phone: (307) 414-0049

## Job Details & Summary

### Geometry

Type	Function	OD (in)	ID (in)	Weight (lb/ft)	Top (ft)	Bottom (ft)	Excess (%)
Open Hole	Outer		13.5		0	1560	25
Casing	Inner	9.625	8.921	36	0	1547	0

### Equipment / People

Unit Type	Unit
AS Cement Trailer Float	CTF(FUF)-308
Field Storage Silo	FSS(CTS)-448
Cement Pump Float	CPF-074
Light Duty Vehicles	LDV-049

### Timing

Event	Date/Time
Call Out	8/9/2022 08:00
Depart Facility	8/9/2022 10:00
On Location	8/9/2022 11:00
Rig Up Iron	8/9/2022 12:20
Job Started	8/9/2022 15:28
Job Completed	8/9/2022 16:29
Rig Down Iron	8/9/2022 16:40
Depart Location	8/9/2022 17:30

### General Job Information

Metrics	Value
Well Fluid Density	8.4 lb/gal
Well Fluid Type	Water
Rig Circulation Vol	300 bbls
Rig Circulation Time	1 hours
Calculated Displacement	116.1 bbls
Actual Displacement	116.1 bbls
Total Spacer to Surface	20 bbls
Total CMT to Surface	31 bbls
Well Topped Out	No

### Job Details

Metrics	Value
Flare Prior to Job	No
Flare Prior to Job	0 units
Flare During Job	No
Flare During Job	0 units
Flare at End of Job	No
Flare at End of Job	0 units
Well Full Prior to Job	Yes
Well Fluid Density Into Well	8.4 lb/gal
Well Fluid Density Out of Well	8.4 lb/gal

### Job Details (cont.)

Metrics	Value
BHCT	86 °F
BHST	110 °F

### Water Analysis

Metrics	Value	Recommended
Water Source	None	
Temperature	67 °F	50-80 °F
pH Level	7	5.5-8.5
Chlorides	0 mg/L	0-3000 mg/L
Total Alkalinity	100	0-1000
Total Hardness	200 mg/L	0-500 mg/L
Carbonates	0 mg/L	0-100 mg/L
Sulfates	<250 mg/L	0-1500 mg/L
Potassium	300 mg/L	0-3000 mg/L
Iron	0 mg/L	0-300 mg/L

### Circulation

Lost Circulation Experienced
No

### Job Execution Information

Fluid	Product	Function	Density (lb/gal)	Yield (ft <sup>3</sup> /sk)	Water Rq. (gal/sk)	Water Rq. (gal/bbl)	Volume (sks)	Volume (bbl)	Designed Top (ft)
1	Fresh Water	Flush	8.34			42.00		20.00	0
2	ACem S100.3.1C	Lead	12.00	2.53	14.86		255.00	114.86	0
3	ACem S100.3.1C	Tail	12.50	2.23	12.58		145.00	57.46	1055
4	D822	DisplacementFinal	8.34			42.00		117.00	0

### Job Fluid Details

Fluid	Type	Fluid	Product	Function	Conc.	Uom
2	Lead	ACem S100.3.1C	ASTM TYPE III	Cement	100.00	%
2	Lead	ACem S100.3.1C	A-10	Accelerator	5.00	%BWOB
2	Lead	ACem S100.3.1C	A-2	Accelerator	2.00	lb/sk
2	Lead	ACem S100.3.1C	A-7P	Accelerator	2.00	lb/sk
2	Lead	ACem S100.3.1C	FP-24	Defoamer	0.30	%BWOB
2	Lead	ACem S100.3.1C	IntegraSeal POLI	LostCirculation	0.13	lb/sk
3	Tail	ACem S100.3.1C	ASTM TYPE III	Cement	100.00	%
3	Tail	ACem S100.3.1C	A-10	Accelerator	5.00	%BWOB
3	Tail	ACem S100.3.1C	A-2	Accelerator	2.00	lb/sk
3	Tail	ACem S100.3.1C	A-7P	Accelerator	2.00	lb/sk
3	Tail	ACem S100.3.1C	FP-24	Defoamer	0.30	%BWOB
3	Tail	ACem S100.3.1C	IntegraSeal POLI	LostCirculation	0.13	lb/sk

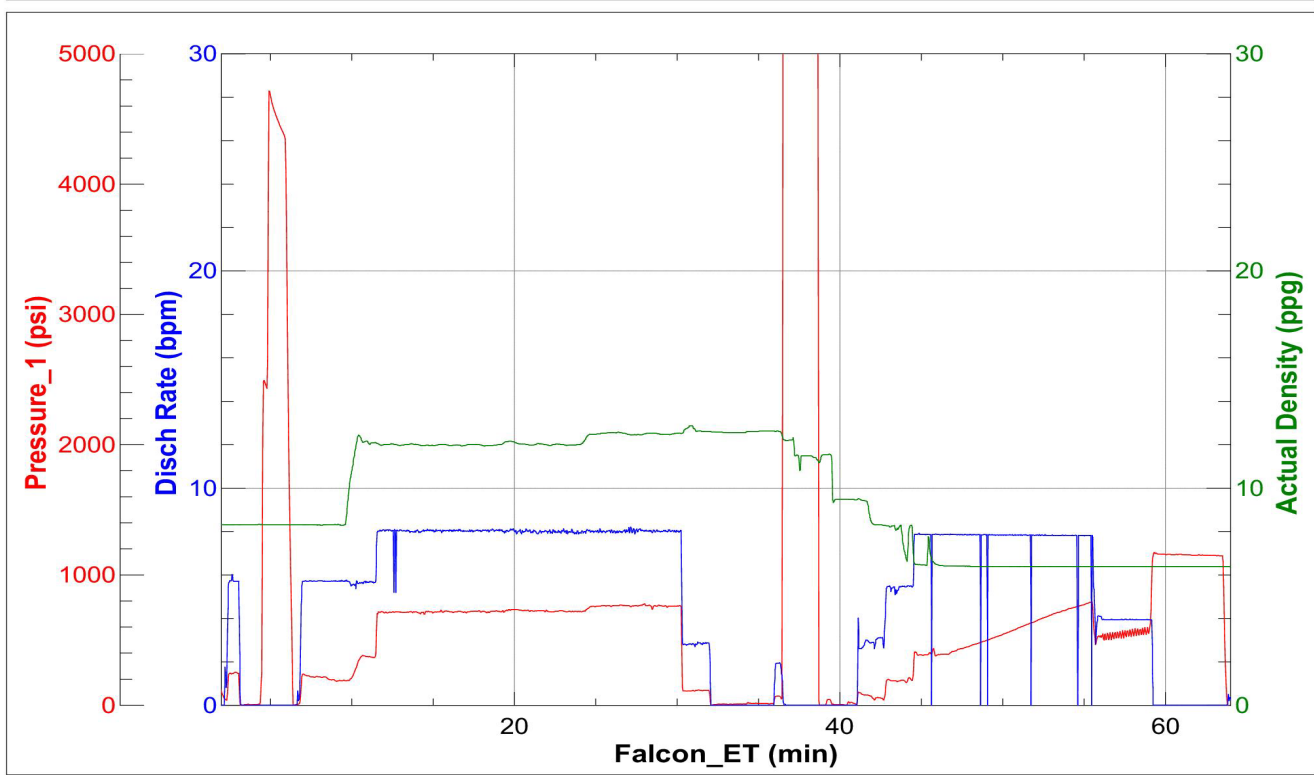
## Job Logs

Line	Event	Date (MM/DD/YY)	Time (HH:MM)	Density (lb/gal)	Pump Rate (bpm)	Pump Volume (bbls)	Pipe Pressure (psi)	Comment
1	Callout	8/9/2022	08:00					Customer calls with an OL time of 13:00 on 8/9/22
2	Arrive On Location	8/9/2022	11:00					Rig TOH
3	Rig Up	8/9/2022	12:00					Rig up water, Bulk, treating line
4	Waiting	8/9/2022	12:30					Waiting on rig to run casing
5	Safety Meeting	8/9/2022	15:15					Pre-job safety meeting with AC crew, rig crew, and customer
6	Fill Lines	8/9/2022	15:28	8.34	5	5	48	Pump 5 bbls of fresh water to fill lines
7	Pressure Test	8/9/2022	15:30	8.34	0	0	4700	Pressure test pumps and lines
8	Pump Spacer	8/9/2022	15:33	8.34	5.6	20	240	Pump 20 bbls of fresh water + Blue dye
9	Pump Lead Cement	8/9/2022	15:35	12	8	115	713	Pump 255 sks of cement @12 ppg
10	Pump Tail Cement	8/9/2022	15:50	12.5	8	57	760	Pump 145 sks of tail @12.5 ppg
11	Drop Plug	8/9/2022	16:02					Shut down drop top plug (wash up on top of the plug)
12	Pump Displacement	8/9/2022	16:07	6.5	7.9	0	390	Send plug start base oil displacement
12	Spacer Back To Surface	8/9/2022	16:17	6.5	7.9	65	730	Start getting spacer to surface
13	Cement To Surface	8/9/2022	16:20	6.5	7.9	80	801	Start getting good cement to surface (31 bbls of cement to surface)
14	Drop Rate	8/9/2022	16:22	6.5	4	100	503	Drop rate to land the plug
15	Land Plug	8/9/2022	16:25	6.5	4	116	1164	FCP was 530, Bumped up to 1164
16	Check Floats	8/9/2022	16:29	6.5				Floats held, .5 bbls back

# Pump Diagrams



JobMaster Program Version 5.01C1  
Job Number: 82852  
Customer: Bayswater  
Well Name: Ruby West 5



BJ Services

Job Start: Tuesday, August 09, 2022