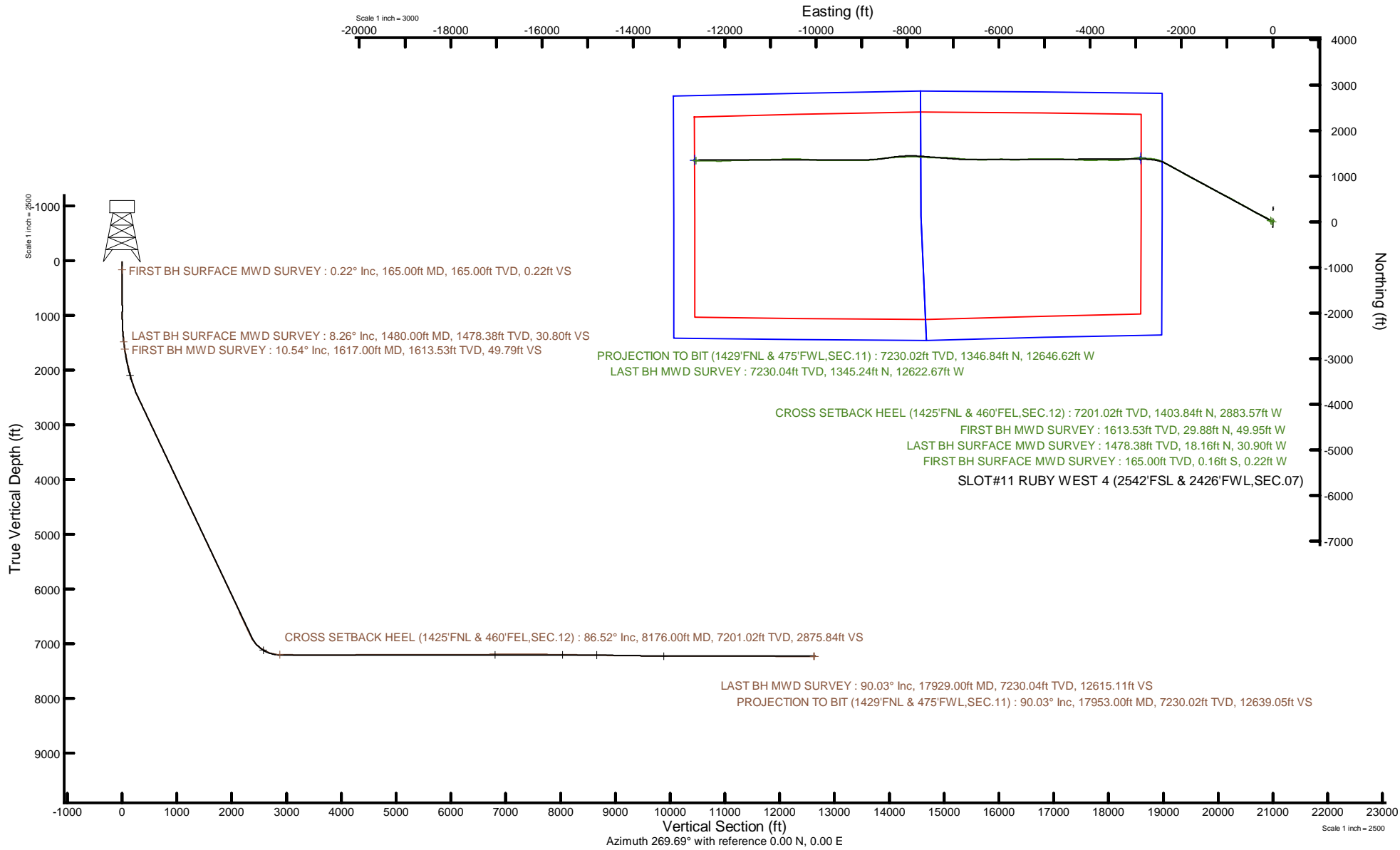


BAYSWATER E&P, LLC

Location: COLORADO Slot: SLOT#11 RUBY WEST 4 (2542'FSL & 2426'FWL,SEC.07)
 Field: WELD COUNTY (NAD83/TRUE NORTH) Well: RUBY WEST 4
 Facility: SEC.07-T07N-R65W Wellbore: RUBY WEST 4 PWB



Plot reference wellpath is RUBY WEST 4 PWP RevB.0	Grid System: NAD83 / Lambert Colorado SP, Northern Zone (501), US feet
True vertical depths are referenced to Ensign 153 (23) (KB)	North Reference: True north
Reference wellpath measured depths are referenced to Ensign 153 (23) (KB)	Scale: True distance
Ensign 153 (23) (KB) to Mean Sea Level: 4946 feet	Coordinates are in feet referenced to Slot
Mean Sea Level to Ground level (At Slot: SLOT#11 RUBY WEST 4 (2542'FSL & 2426'FWL,SEC.07)): -4923 feet	Depths are in feet
Offset wellpath MDs are referenced to each path's default MD datum	Created by: painrefr on 2022-11-28; Database: WellArchitectDB



REFERENCE WELLPATH IDENTIFICATION			
Operator	BAYSWATER E&P, LLC	Well	RUBY WEST 4
Field	WELD COUNTY (NAD83/TRUE NORTH)	API	0512351757
Facility	SEC.07-T07N-R65W	Wellbore	RUBY WEST 4 AWB
Slot	SLOT#11 RUBY WEST 4 (2542'FSL & 2426'FWL,SEC.07)		

REPORT SETUP INFORMATION			
Projection System	NAD83 / Lambert Colorado SP, Northern Zone (501), US feet	Software System	WellArchitect® 6.0
North Reference	True	User	Painsetr
Scale	0.999974	Report Generated	1/17/2023 at 9:58:32 AM
Convergence at slot	0.51° East	Database	WellArchitectDB

WELLPATH LOCATION						
	Local coordinates		Grid coordinates		Geographic coordinates	
	North[ft]	East[ft]	Easting[US ft]	Northing[US ft]	Latitude	Longitude
Slot Location	-345.01	-3.06	3220206.92	1458591.64	40.5895300°	-104.7071130°
Facility Reference Pt			3220206.89	1458936.65	40.5904770°	-104.7071020°
Field Reference Pt			3174587.00	1430859.71	40.5144139°	-104.8720750°

WELLPATH DATUM			
Calculation method	Minimum curvature	Ensign 153 (23') (KB) to Facility Vertical Datum	4946.00ft
Horizontal Reference Pt	Slot	Ensign 153 (23') (KB) to Mean Sea Level	4946.00ft
Vertical Reference Pt	Ensign 153 (23') (KB)	Ensign 153 (23') (KB) to Ground Level at Slot (SLOT#11 RUBY WEST 4 (2542'FSL & 2426'FWL,SEC.07))	23.00ft
MD Reference Pt	Ensign 153 (23') (KB)	Section Origin	N 0.00, E 0.00 ft
Field Vertical Reference	Mean Sea Level	Section Azimuth	269.69°

REFERENCE WELLPATH IDENTIFICATION			
Operator	BAYSWATER E&P, LLC	Well	RUBY WEST 4
Field	WELD COUNTY (NAD83/TRUE NORTH)	API	0512351757
Facility	SEC.07-T07N-R65W	Wellbore	RUBY WEST 4 AWB
Slot	SLOT#11 RUBY WEST 4 (2542'FSL & 2426'FWL,SEC.07)		

WELLPATH DATA (204 stations) † = interpolated, ‡ = extrapolated station												
MD [ft]	Inclination [°]	Azimuth [°]	TVD [ft]	Vert Sect [ft]	North [ft]	East [ft]	Grid East [US ft]	Grid North [US ft]	Latitude	Longitude	DLS [°/100ft]	Comments
0.00†	0.000	232.930	0.00	0.00	0.00	0.00	3220206.92	1458591.63	40.5895300	-104.7071130	0.00	
23.00	0.000	232.930	23.00	0.00	0.00	0.00	3220206.92	1458591.63	40.5895300	-104.7071130	0.00	
165.00	0.220	232.930	165.00	0.22	-0.16	-0.22	3220206.71	1458591.47	40.5895295	-104.7071138	0.15	FIRST BH SURFACE MWD SURVEY
226.00	0.640	190.110	226.00	0.37	-0.57	-0.37	3220206.56	1458591.06	40.5895284	-104.7071143	0.82	
318.00	0.270	290.740	318.00	0.67	-1.00	-0.66	3220206.27	1458590.63	40.5895273	-104.7071154	0.80	
407.00	0.620	334.590	406.99	1.07	-0.49	-1.07	3220205.86	1458591.14	40.5895287	-104.7071168	0.52	
496.00	0.620	349.320	495.99	1.36	0.42	-1.36	3220205.56	1458592.04	40.5895311	-104.7071179	0.18	
585.00	0.460	300.830	584.98	1.75	1.07	-1.76	3220205.16	1458592.69	40.5895329	-104.7071193	0.52	
675.00	0.560	291.930	674.98	2.47	1.42	-2.48	3220204.43	1458593.04	40.5895339	-104.7071219	0.14	
765.00	1.100	308.330	764.97	3.55	2.12	-3.56	3220203.34	1458593.73	40.5895358	-104.7071258	0.65	
854.00	0.090	44.560	853.97	4.17	2.70	-4.18	3220202.72	1458594.30	40.5895374	-104.7071281	1.25	
943.00	0.290	152.570	942.97	4.02	2.55	-4.03	3220202.87	1458594.15	40.5895370	-104.7071275	0.37	
1033.00	0.400	174.740	1032.96	3.89	2.04	-3.90	3220203.01	1458593.64	40.5895356	-104.7071270	0.19	
1122.00	1.310	290.180	1121.96	4.81	2.08	-4.82	3220202.08	1458593.67	40.5895357	-104.7071304	1.71	
1212.00	2.830	304.710	1211.90	7.60	3.70	-7.62	3220199.28	1458595.27	40.5895402	-104.7071404	1.77	
1301.00	5.020	299.790	1300.68	12.76	6.89	-12.80	3220194.06	1458598.41	40.5895489	-104.7071591	2.49	
1391.00	7.060	303.650	1390.18	20.76	11.91	-20.82	3220186.00	1458603.36	40.5895627	-104.7071880	2.31	
1480.00	8.260	300.300	1478.38	30.80	18.16	-30.90	3220175.87	1458609.52	40.5895799	-104.7072242	1.44	LAST BH SURFACE MWD SURVEY
1617.00	10.540	302.590	1613.53	49.79	29.88	-49.95	3220156.71	1458621.07	40.5896120	-104.7072929	1.69	FIRST BH MWD SURVEY
1706.00	12.380	304.770	1700.76	64.43	39.71	-64.65	3220141.92	1458630.76	40.5896390	-104.7073458	2.12	
1796.00	14.440	307.450	1788.30	81.20	52.03	-81.49	3220124.98	1458642.94	40.5896728	-104.7074064	2.39	
1885.00	14.930	300.570	1874.40	99.81	64.61	-100.17	3220106.18	1458655.35	40.5897073	-104.7074737	2.03	
1975.00	14.810	297.030	1961.39	119.98	75.74	-120.40	3220085.86	1458666.29	40.5897379	-104.7075465	1.02	
2063.00	14.920	296.980	2046.44	140.04	85.99	-140.51	3220065.65	1458676.36	40.5897660	-104.7076189	0.13	
2153.00	16.450	296.650	2133.09	161.69	96.96	-162.23	3220043.84	1458687.14	40.5897961	-104.7076971	1.70	
2243.00	18.930	297.750	2218.82	185.94	109.48	-186.54	3220019.42	1458699.44	40.5898305	-104.7077846	2.78	
2332.00	21.650	298.390	2302.29	213.08	124.01	-213.76	3219992.07	1458713.72	40.5898704	-104.7078827	3.07	
2422.00	23.610	297.670	2385.36	243.56	140.27	-244.33	3219961.35	1458729.71	40.5899150	-104.7079927	2.20	
2511.00	27.650	297.300	2465.59	277.61	158.03	-278.48	3219927.05	1458747.16	40.5899637	-104.7081157	4.54	
2601.00	28.070	294.840	2545.16	315.29	176.50	-316.26	3219889.11	1458765.30	40.5900145	-104.7082517	1.36	

REFERENCE WELLPATH IDENTIFICATION				
Operator	BAYSWATER E&P, LLC		Well	RUBY WEST 4
Field	WELD COUNTY (NAD83/TRUE NORTH)		API	0512351757
Facility	SEC.07-T07N-R65W		Wellbore	RUBY WEST 4 AWB
Slot	SLOT#11 RUBY WEST 4 (2542'FSL & 2426'FWL,SEC.07)			

WELLPATH DATA (204 stations)												
MD [ft]	Inclination [°]	Azimuth [°]	TVD [ft]	Vert Sect [ft]	North [ft]	East [ft]	Grid East [US ft]	Grid North [US ft]	Latitude	Longitude	DLS [°/100ft]	Comments
2691.00	28.310	295.300	2624.48	353.70	194.52	-354.77	3219850.44	1458782.97	40.5900639	-104.7083904	0.36	
2780.00	28.420	297.440	2702.80	391.47	213.29	-392.64	3219812.40	1458801.40	40.5901154	-104.7085267	1.15	
2870.00	28.760	302.060	2781.84	428.71	234.66	-430.01	3219774.85	1458822.43	40.5901741	-104.7086613	2.48	
2959.00	28.290	300.940	2860.03	464.83	256.87	-466.24	3219738.42	1458844.32	40.5902350	-104.7087917	0.80	
3048.00	28.810	300.600	2938.21	501.25	278.63	-502.79	3219701.68	1458865.75	40.5902948	-104.7089233	0.61	
3137.00	28.510	300.920	3016.31	537.81	300.46	-539.47	3219664.80	1458887.25	40.5903547	-104.7090554	0.38	
3227.00	28.710	299.790	3095.32	574.88	322.24	-576.66	3219627.43	1458908.69	40.5904145	-104.7091893	0.64	
3316.00	28.120	299.180	3173.59	611.63	343.08	-613.52	3219590.38	1458929.21	40.5904717	-104.7093220	0.74	
3406.00	28.220	297.830	3252.93	648.86	363.36	-650.86	3219552.86	1458949.15	40.5905273	-104.7094564	0.72	
3495.00	28.170	297.980	3331.37	685.91	383.04	-688.02	3219515.53	1458968.49	40.5905813	-104.7095902	0.10	
3584.00	28.730	298.690	3409.63	723.11	403.16	-725.33	3219478.03	1458988.28	40.5906366	-104.7097246	0.74	
3674.00	28.110	298.750	3488.78	760.57	423.74	-762.90	3219440.29	1459008.53	40.5906931	-104.7098599	0.69	
3763.00	27.880	300.110	3567.37	796.84	444.27	-799.28	3219403.72	1459028.73	40.5907494	-104.7099909	0.76	
3853.00	28.240	298.940	3646.79	833.56	465.13	-836.12	3219366.70	1459049.26	40.5908066	-104.7101235	0.73	
3942.00	28.350	298.740	3725.15	870.40	485.48	-873.07	3219329.57	1459069.27	40.5908625	-104.7102566	0.16	
4031.00	28.330	299.150	3803.49	907.26	505.92	-910.05	3219292.42	1459089.39	40.5909186	-104.7103897	0.22	
4120.00	27.980	298.390	3881.96	943.96	526.14	-946.86	3219255.43	1459109.27	40.5909741	-104.7105222	0.56	
4210.00	28.630	296.960	3961.20	981.64	545.95	-984.65	3219217.46	1459128.75	40.5910285	-104.7106583	1.04	
4300.00	28.440	296.810	4040.26	1019.88	565.39	-1022.99	3219178.94	1459147.84	40.5910818	-104.7107964	0.23	
4389.00	28.370	296.610	4118.55	1057.59	584.42	-1060.81	3219140.96	1459166.53	40.5911341	-104.7109325	0.13	
4478.00	28.450	297.120	4196.83	1095.26	603.56	-1098.59	3219103.01	1459185.33	40.5911866	-104.7110686	0.29	
4567.00	28.460	297.410	4275.08	1132.85	622.98	-1136.28	3219065.15	1459204.42	40.5912399	-104.7112043	0.16	
4657.00	28.290	298.840	4354.27	1170.46	643.14	-1174.00	3219027.25	1459224.24	40.5912952	-104.7113401	0.78	
4747.00	28.310	298.360	4433.51	1207.81	663.57	-1211.46	3218989.61	1459244.33	40.5913513	-104.7114750	0.25	
4836.00	28.700	298.420	4511.72	1245.06	683.76	-1248.83	3218952.07	1459264.19	40.5914067	-104.7116095	0.44	
4926.00	28.200	298.290	4590.85	1282.68	704.13	-1286.56	3218914.16	1459284.21	40.5914626	-104.7117454	0.56	
5015.00	28.000	298.370	4669.36	1319.47	724.02	-1323.46	3218877.08	1459303.77	40.5915172	-104.7118782	0.23	
5104.00	28.250	297.420	4747.85	1356.44	743.65	-1360.54	3218839.83	1459323.07	40.5915711	-104.7120118	0.58	
5194.00	28.120	298.090	4827.18	1393.95	763.44	-1398.15	3218802.04	1459342.52	40.5916254	-104.7121472	0.38	
5283.00	28.430	300.310	4905.56	1430.63	784.01	-1434.95	3218765.06	1459362.76	40.5916818	-104.7122797	1.23	

REFERENCE WELLPATH IDENTIFICATION			
Operator	BAYSWATER E&P, LLC	Well	RUBY WEST 4
Field	WELD COUNTY (NAD83/TRUE NORTH)	API	0512351757
Facility	SEC.07-T07N-R65W	Wellbore	RUBY WEST 4 AWB
Slot	SLOT#11 RUBY WEST 4 (2542'FSL & 2426'FWL,SEC.07)		

WELLPATH DATA (204 stations)												
MD [ft]	Inclination [°]	Azimuth [°]	TVD [ft]	Vert Sect [ft]	North [ft]	East [ft]	Grid East [US ft]	Grid North [US ft]	Latitude	Longitude	DLS [°/100ft]	Comments
5373.00	28.040	298.100	4984.86	1467.67	804.79	-1472.11	3218727.72	1459383.20	40.5917389	-104.7124135	1.24	
5462.00	28.410	297.960	5063.27	1504.72	824.57	-1509.26	3218690.39	1459402.65	40.5917931	-104.7125473	0.42	
5551.00	28.170	298.000	5141.64	1541.86	844.36	-1546.51	3218652.97	1459422.11	40.5918475	-104.7126814	0.27	
5641.00	28.490	298.250	5220.86	1579.41	864.49	-1584.18	3218615.13	1459441.90	40.5919027	-104.7128170	0.38	
5730.00	27.950	297.670	5299.28	1616.48	884.22	-1621.35	3218577.78	1459461.30	40.5919569	-104.7129509	0.68	
5820.00	28.060	298.200	5378.75	1653.70	904.02	-1658.68	3218540.27	1459480.76	40.5920112	-104.7130853	0.30	
5910.00	28.070	297.540	5458.16	1691.02	923.81	-1696.11	3218502.67	1459500.22	40.5920655	-104.7132201	0.35	
6000.00	28.330	297.500	5537.48	1728.63	943.46	-1733.83	3218464.78	1459519.53	40.5921195	-104.7133559	0.29	
6090.00	28.510	298.330	5616.63	1766.37	963.52	-1771.68	3218426.75	1459539.25	40.5921745	-104.7134922	0.48	
6179.00	28.350	298.730	5694.90	1803.49	983.75	-1808.90	3218389.35	1459559.15	40.5922300	-104.7136262	0.28	
6270.00	28.310	298.610	5775.00	1841.26	1004.47	-1846.79	3218351.27	1459579.53	40.5922869	-104.7137626	0.08	
6359.00	28.320	298.960	5853.35	1878.15	1024.80	-1883.79	3218314.10	1459599.52	40.5923427	-104.7138959	0.19	
6449.00	28.270	298.750	5932.60	1915.40	1045.39	-1921.16	3218276.55	1459619.77	40.5923992	-104.7140304	0.12	
6538.00	28.130	300.630	6011.04	1951.82	1066.22	-1957.69	3218239.84	1459640.27	40.5924563	-104.7141620	1.01	
6627.00	28.180	300.650	6089.51	1987.83	1087.62	-1993.82	3218203.51	1459661.35	40.5925151	-104.7142921	0.06	
6716.00	28.080	300.880	6167.99	2023.77	1109.08	-2029.88	3218167.27	1459682.49	40.5925740	-104.7144219	0.17	
6806.00	28.600	299.440	6247.21	2060.59	1130.54	-2066.82	3218130.14	1459703.62	40.5926329	-104.7145549	0.95	
6895.00	28.710	298.340	6325.31	2097.84	1151.16	-2104.18	3218092.59	1459723.90	40.5926895	-104.7146895	0.61	
6984.00	27.590	299.270	6403.78	2134.52	1171.38	-2140.98	3218055.62	1459743.80	40.5927450	-104.7148219	1.35	
7073.00	28.500	298.630	6482.33	2171.03	1191.63	-2177.59	3218018.82	1459763.72	40.5928005	-104.7149538	1.08	
7163.00	28.650	299.100	6561.37	2208.61	1212.42	-2215.29	3217980.94	1459784.16	40.5928576	-104.7150895	0.30	
7252.00	27.650	299.310	6639.84	2245.15	1232.90	-2251.94	3217944.11	1459804.32	40.5929138	-104.7152215	1.13	
7342.00	28.060	298.580	6719.41	2281.84	1253.25	-2288.74	3217907.13	1459824.34	40.5929696	-104.7153540	0.59	
7431.00	27.220	298.840	6798.25	2317.94	1273.08	-2324.95	3217870.74	1459843.85	40.5930241	-104.7154844	0.95	
7520.00	29.400	300.440	6876.60	2354.50	1293.97	-2361.62	3217833.89	1459864.41	40.5930814	-104.7156165	2.59	
7610.00	38.250	296.420	6951.31	2398.45	1317.61	-2405.71	3217789.59	1459887.65	40.5931463	-104.7157752	10.14	
7699.00	47.480	292.010	7016.48	2453.53	1342.22	-2460.92	3217734.17	1459911.76	40.5932138	-104.7159740	10.90	
7788.00	55.850	286.120	7071.67	2519.35	1364.79	-2526.86	3217668.03	1459933.74	40.5932757	-104.7162115	10.74	
7877.00	59.310	278.060	7119.43	2592.64	1380.40	-2600.24	3217594.52	1459948.70	40.5933186	-104.7164757	8.57	
7967.00	67.760	273.410	7159.52	2672.67	1388.32	-2680.31	3217514.38	1459955.90	40.5933403	-104.7167640	10.46	

REFERENCE WELLPATH IDENTIFICATION				
Operator	BAYSWATER E&P, LLC		Well	RUBY WEST 4
Field	WELD COUNTY (NAD83/TRUE NORTH)		API	0512351757
Facility	SEC.07-T07N-R65W		Wellbore	RUBY WEST 4 AWB
Slot	SLOT#11 RUBY WEST 4 (2542'FSL & 2426'FWL,SEC.07)			

WELLPATH DATA (204 stations) † = interpolated, ‡ = extrapolated station												
MD [ft]	Inclination [°]	Azimuth [°]	TVD [ft]	Vert Sect [ft]	North [ft]	East [ft]	Grid East [US ft]	Grid North [US ft]	Latitude	Longitude	DLS [°/100ft]	Comments
8056.00	78.130	274.780	7185.59	2757.38	1394.42	-2765.06	3217429.58	1459961.24	40.5933570	-104.7170692	11.74	
8146.00	84.980	274.670	7198.80	2846.01	1401.75	-2853.73	3217340.85	1459967.77	40.5933771	-104.7173884	7.61	
8176.00†	86.515	273.335	7201.02	2875.84	1403.84	-2883.57	3217310.99	1459969.59	40.5933828	-104.7174959	6.77	CROSS SETBACK HEEL (1425'FNL & 460'FEL,SEC.12)
8235.00	89.540	270.720	7203.05	2934.74	1405.92	-2942.49	3217252.06	1459971.15	40.5933885	-104.7177080	6.77	
8325.00	89.660	259.950	7203.68	3024.35	1398.61	-3032.06	3217162.57	1459963.04	40.5933684	-104.7180305	11.97	
8414.00	89.320	259.660	7204.48	3112.02	1382.86	-3119.65	3217075.12	1459946.51	40.5933251	-104.7183459	0.50	
8504.00	89.320	263.530	7205.54	3201.11	1369.71	-3208.66	3216986.23	1459932.56	40.5932890	-104.7186664	4.30	
8593.00	89.750	264.750	7206.27	3289.68	1360.62	-3297.19	3216897.79	1459922.68	40.5932640	-104.7189852	1.45	
8682.00	89.780	265.550	7206.63	3378.40	1353.10	-3385.87	3216809.19	1459914.37	40.5932434	-104.7193045	0.90	
8771.00	89.690	271.110	7207.04	3467.34	1350.50	-3474.80	3216720.29	1459910.98	40.5932362	-104.7196247	6.25	
8861.00	90.000	273.520	7207.29	3557.24	1354.14	-3564.72	3216630.34	1459913.81	40.5932461	-104.7199485	2.70	
8951.00	89.910	271.600	7207.36	3647.12	1358.16	-3654.62	3216540.41	1459917.03	40.5932571	-104.7202722	2.14	
9041.00	90.000	269.230	7207.43	3737.11	1358.81	-3744.61	3216450.42	1459916.87	40.5932589	-104.7205962	2.64	
9130.00	89.940	267.370	7207.48	3826.08	1356.17	-3833.57	3216361.49	1459913.44	40.5932516	-104.7209165	2.09	
9218.00	90.370	268.420	7207.24	3914.04	1352.94	-3921.51	3216273.58	1459909.42	40.5932427	-104.7212332	1.29	
9307.00	90.460	271.610	7206.59	4003.02	1352.96	-4010.49	3216184.60	1459908.65	40.5932427	-104.7215536	3.59	
9396.00	90.430	270.670	7205.90	4091.99	1354.73	-4099.47	3216095.62	1459909.62	40.5932475	-104.7218740	1.06	
9486.00	90.460	273.630	7205.20	4181.89	1358.11	-4189.40	3216005.67	1459912.19	40.5932568	-104.7221977	3.29	
9575.00	90.400	273.000	7204.53	4270.71	1363.25	-4278.25	3215916.78	1459916.54	40.5932708	-104.7225177	0.71	
9665.00	90.620	272.620	7203.73	4360.57	1367.67	-4368.13	3215826.86	1459920.15	40.5932829	-104.7228413	0.49	
9754.00	90.400	272.530	7202.94	4449.46	1371.66	-4457.04	3215737.92	1459923.36	40.5932938	-104.7231615	0.27	
9843.00	90.490	271.620	7202.25	4538.37	1374.89	-4545.98	3215648.96	1459925.78	40.5933026	-104.7234817	1.03	
9933.00	89.970	270.640	7201.89	4628.34	1376.66	-4635.96	3215558.97	1459926.75	40.5933075	-104.7238057	1.23	
10022.00	90.090	269.710	7201.84	4717.34	1376.93	-4724.96	3215469.98	1459926.23	40.5933082	-104.7241261	1.05	
10112.00	90.090	270.100	7201.70	4807.34	1376.78	-4814.96	3215379.98	1459925.27	40.5933077	-104.7244502	0.43	
10202.00	90.000	269.970	7201.63	4897.34	1376.84	-4904.96	3215289.99	1459924.52	40.5933078	-104.7247743	0.18	
10290.00	90.060	270.210	7201.58	4985.34	1376.98	-4992.96	3215201.99	1459923.88	40.5933081	-104.7250911	0.28	
10380.00	90.120	271.330	7201.44	5075.32	1378.19	-5082.95	3215112.00	1459924.28	40.5933114	-104.7254152	1.25	
10469.00	90.060	271.580	7201.30	5164.27	1380.45	-5171.92	3215023.01	1459925.75	40.5933176	-104.7257355	0.29	
10559.00	89.880	267.890	7201.35	5254.26	1380.03	-5261.90	3214933.04	1459924.52	40.5933164	-104.7260595	4.10	

REFERENCE WELLPATH IDENTIFICATION			
Operator	BAYSWATER E&P, LLC	Well	RUBY WEST 4
Field	WELD COUNTY (NAD83/TRUE NORTH)	API	0512351757
Facility	SEC.07-T07N-R65W	Wellbore	RUBY WEST 4 AWB
Slot	SLOT#11 RUBY WEST 4 (2542'FSL & 2426'FWL,SEC.07)		

WELLPATH DATA (204 stations)												
MD [ft]	Inclination [°]	Azimuth [°]	TVD [ft]	Vert Sect [ft]	North [ft]	East [ft]	Grid East [US ft]	Grid North [US ft]	Latitude	Longitude	DLS [°/100ft]	Comments
10648.00	89.910	267.080	7201.51	5343.19	1376.13	-5350.81	3214844.17	1459919.82	40.5933056	-104.7263797	0.91	
10737.00	89.850	266.440	7201.70	5432.08	1371.09	-5439.67	3214755.36	1459914.00	40.5932917	-104.7266996	0.72	
10826.00	89.970	266.900	7201.84	5520.95	1365.93	-5528.52	3214666.56	1459908.04	40.5932775	-104.7270195	0.53	
10916.00	90.890	269.230	7201.16	5610.91	1362.89	-5618.46	3214576.66	1459904.19	40.5932691	-104.7273434	2.78	
11005.00	90.800	272.030	7199.85	5699.88	1363.86	-5707.44	3214487.68	1459904.38	40.5932717	-104.7276637	3.15	
11095.00	90.890	274.520	7198.52	5789.68	1369.01	-5797.27	3214397.80	1459908.71	40.5932858	-104.7279872	2.77	
11185.00	90.000	272.740	7197.82	5879.46	1374.70	-5887.08	3214307.95	1459913.61	40.5933014	-104.7283106	2.21	
11274.00	89.970	268.380	7197.85	5968.43	1375.57	-5976.06	3214218.97	1459913.68	40.5933037	-104.7286310	4.90	
11363.00	90.250	267.560	7197.68	6057.39	1372.42	-6065.00	3214130.06	1459909.73	40.5932950	-104.7289512	0.97	
11452.00	90.000	268.360	7197.48	6146.35	1369.25	-6153.94	3214041.15	1459905.77	40.5932862	-104.7292715	0.94	
11542.00	90.000	267.990	7197.48	6236.32	1366.39	-6243.90	3213951.23	1459902.10	40.5932783	-104.7295954	0.41	
11631.00	90.120	269.720	7197.39	6325.30	1364.61	-6332.88	3213862.27	1459899.53	40.5932734	-104.7299158	1.95	
11720.00	90.120	270.870	7197.20	6414.30	1365.07	-6421.87	3213773.28	1459899.19	40.5932745	-104.7302362	1.29	
11809.00	90.150	270.760	7196.99	6503.28	1366.33	-6510.87	3213684.28	1459899.66	40.5932780	-104.7305567	0.13	
11898.00	90.220	271.470	7196.71	6592.25	1368.06	-6599.85	3213595.29	1459900.60	40.5932826	-104.7308771	0.80	
11988.00	90.250	273.880	7196.34	6682.12	1372.26	-6689.74	3213505.37	1459903.99	40.5932941	-104.7312007	2.68	
12077.00	90.340	275.390	7195.88	6770.79	1379.46	-6778.45	3213416.60	1459910.39	40.5933138	-104.7315201	1.70	
12165.00	90.280	275.570	7195.40	6858.33	1387.86	-6866.04	3213328.94	1459918.01	40.5933368	-104.7318356	0.22	
12255.00	90.340	275.360	7194.91	6947.88	1396.43	-6955.63	3213239.28	1459925.78	40.5933602	-104.7321582	0.24	
12343.00	90.280	272.950	7194.44	7035.60	1402.81	-7043.39	3213151.46	1459931.37	40.5933777	-104.7324742	2.74	
12433.00	89.880	271.370	7194.31	7125.51	1406.20	-7133.33	3213061.51	1459933.96	40.5933869	-104.7327980	1.81	
12522.00	89.910	270.380	7194.48	7214.49	1407.56	-7222.32	3212972.51	1459934.52	40.5933906	-104.7331184	1.11	
12613.00	89.970	270.610	7194.57	7305.48	1408.34	-7313.31	3212881.51	1459934.49	40.5933926	-104.7334461	0.26	
12702.00	89.940	270.940	7194.64	7394.47	1409.55	-7402.30	3212792.52	1459934.90	40.5933959	-104.7337665	0.37	
12792.00	89.940	272.230	7194.74	7484.42	1412.04	-7492.27	3212702.54	1459936.59	40.5934026	-104.7340904	1.43	
12882.00	90.030	274.220	7194.76	7574.24	1417.10	-7582.12	3212612.65	1459940.85	40.5934165	-104.7344140	2.21	
12971.00	89.630	272.310	7195.02	7663.06	1422.17	-7670.97	3212523.76	1459945.12	40.5934303	-104.7347339	2.19	
13060.00	89.140	272.780	7195.98	7751.95	1426.12	-7759.88	3212434.82	1459948.28	40.5934411	-104.7350540	0.76	
13150.00	89.050	270.310	7197.40	7841.88	1428.55	-7849.83	3212344.86	1459949.90	40.5934476	-104.7353779	2.75	
13239.00	89.140	269.070	7198.81	7930.87	1428.06	-7938.81	3212255.88	1459948.62	40.5934462	-104.7356983	1.40	

REFERENCE WELLPATH IDENTIFICATION			
Operator	BAYSWATER E&P, LLC	Well	RUBY WEST 4
Field	WELD COUNTY (NAD83/TRUE NORTH)	API	0512351757
Facility	SEC.07-T07N-R65W	Wellbore	RUBY WEST 4 AWB
Slot	SLOT#11 RUBY WEST 4 (2542'FSL & 2426'FWL,SEC.07)		

WELLPATH DATA (204 stations)												
MD [ft]	Inclination [°]	Azimuth [°]	TVD [ft]	Vert Sect [ft]	North [ft]	East [ft]	Grid East [US ft]	Grid North [US ft]	Latitude	Longitude	DLS [°/100ft]	Comments
13328.00	89.080	268.060	7200.19	8019.84	1425.84	-8027.77	3212166.95	1459945.60	40.5934401	-104.7360186	1.14	
13418.00	89.110	269.070	7201.61	8109.81	1423.58	-8117.73	3212077.01	1459942.54	40.5934338	-104.7363426	1.12	
13507.00	89.170	266.510	7202.95	8198.74	1420.15	-8206.65	3211988.13	1459938.31	40.5934243	-104.7366627	2.88	
13597.00	89.080	266.180	7204.32	8288.58	1414.41	-8296.45	3211898.38	1459931.77	40.5934085	-104.7369861	0.38	
13686.00	89.170	265.520	7205.68	8377.37	1407.97	-8385.21	3211809.69	1459924.54	40.5933907	-104.7373057	0.75	
13776.00	89.140	263.230	7207.01	8466.97	1399.15	-8474.76	3211720.23	1459914.92	40.5933664	-104.7376281	2.54	
13865.00	89.140	262.590	7208.34	8555.33	1388.17	-8563.07	3211632.02	1459903.15	40.5933362	-104.7379461	0.72	
13955.00	89.080	262.160	7209.74	8644.59	1376.23	-8652.26	3211542.94	1459890.41	40.5933033	-104.7382672	0.48	
14045.00	88.990	263.440	7211.26	8733.93	1364.95	-8741.54	3211453.77	1459878.33	40.5932723	-104.7385886	1.43	
14134.00	89.230	265.180	7212.64	8822.52	1356.13	-8830.09	3211365.31	1459868.72	40.5932480	-104.7389075	1.97	
14224.00	89.170	268.740	7213.90	8912.40	1351.36	-8919.94	3211275.51	1459863.15	40.5932348	-104.7392310	3.96	
14313.00	89.200	271.300	7215.16	9001.38	1351.39	-9008.92	3211186.53	1459862.38	40.5932348	-104.7395514	2.88	
14402.00	89.230	271.200	7216.38	9090.34	1353.33	-9097.89	3211097.55	1459863.53	40.5932400	-104.7398717	0.12	
14491.00	89.320	270.220	7217.51	9179.32	1354.43	-9186.88	3211008.56	1459863.83	40.5932430	-104.7401921	1.11	
14581.00	89.320	269.490	7218.58	9269.31	1354.20	-9276.87	3210918.57	1459862.80	40.5932422	-104.7405162	0.81	
14670.00	89.140	268.890	7219.77	9358.30	1352.95	-9365.85	3210829.61	1459860.75	40.5932387	-104.7408366	0.70	
14759.00	89.050	268.450	7221.18	9447.27	1350.88	-9454.82	3210740.67	1459857.89	40.5932329	-104.7411569	0.50	
14848.00	89.140	269.210	7222.58	9536.25	1349.06	-9543.79	3210651.72	1459855.28	40.5932278	-104.7414773	0.86	
14938.00	89.140	269.530	7223.93	9626.24	1348.07	-9633.77	3210561.75	1459853.48	40.5932250	-104.7418013	0.36	
15027.00	89.080	270.070	7225.32	9715.23	1347.76	-9722.76	3210472.77	1459852.37	40.5932241	-104.7421217	0.61	
15116.00	89.050	271.600	7226.77	9804.19	1349.06	-9811.73	3210383.79	1459852.88	40.5932275	-104.7424421	1.72	
15206.00	89.140	272.100	7228.19	9894.12	1351.97	-9901.68	3210293.83	1459854.98	40.5932354	-104.7427659	0.56	
15296.00	89.970	273.080	7228.89	9984.00	1356.03	-9991.58	3210203.90	1459858.24	40.5932465	-104.7430896	1.43	
15385.00	90.120	273.370	7228.82	10072.83	1361.04	-10080.44	3210115.00	1459862.45	40.5932601	-104.7434096	0.37	
15475.00	90.180	273.670	7228.58	10162.63	1366.56	-10170.27	3210025.13	1459867.17	40.5932752	-104.7437331	0.34	
15564.00	90.280	273.150	7228.23	10251.44	1371.86	-10259.11	3209936.24	1459871.67	40.5932896	-104.7440530	0.59	
15654.00	89.970	274.050	7228.03	10341.23	1377.51	-10348.93	3209846.38	1459876.52	40.5933050	-104.7443764	1.06	
15742.00	90.370	271.590	7227.77	10429.09	1381.84	-10436.82	3209758.46	1459880.06	40.5933168	-104.7446928	2.83	
15832.00	90.120	269.100	7227.38	10519.07	1382.38	-10526.81	3209668.47	1459879.80	40.5933182	-104.7450169	2.78	
15921.00	90.220	268.890	7227.12	10608.07	1380.82	-10615.79	3209579.50	1459877.44	40.5933138	-104.7453373	0.26	

REFERENCE WELLPATH IDENTIFICATION			
Operator	BAYSWATER E&P, LLC	Well	RUBY WEST 4
Field	WELD COUNTY (NAD83/TRUE NORTH)	API	0512351757
Facility	SEC.07-T07N-R65W	Wellbore	RUBY WEST 4 AWP
Slot	SLOT#11 RUBY WEST 4 (2542'FSL & 2426'FWL,SEC.07)		

WELLPATH DATA (204 stations) † = interpolated, ‡ = extrapolated station												
MD [ft]	Inclination [°]	Azimuth [°]	TVD [ft]	Vert Sect [ft]	North [ft]	East [ft]	Grid East [US ft]	Grid North [US ft]	Latitude	Longitude	DLS [°/100ft]	Comments
16010.00	90.120	267.470	7226.86	10697.03	1377.99	-10704.75	3209490.58	1459873.82	40.5933059	-104.7456576	1.60	
16100.00	90.090	266.780	7226.69	10786.94	1373.48	-10794.63	3209400.74	1459868.50	40.5932934	-104.7459812	0.77	
16189.00	90.180	267.980	7226.48	10875.87	1369.41	-10883.54	3209311.88	1459863.64	40.5932822	-104.7463013	1.35	
16278.00	90.150	268.320	7226.23	10964.84	1366.54	-10972.49	3209222.96	1459859.97	40.5932742	-104.7466216	0.38	
16368.00	90.090	268.170	7226.04	11054.81	1363.78	-11062.45	3209133.03	1459856.41	40.5932665	-104.7469455	0.18	
16458.00	90.180	268.340	7225.82	11144.78	1361.04	-11152.41	3209043.10	1459852.87	40.5932589	-104.7472694	0.21	
16547.00	90.150	269.530	7225.57	11233.77	1359.39	-11241.39	3208954.14	1459850.42	40.5932542	-104.7475898	1.34	
16637.00	89.970	269.180	7225.47	11323.77	1358.37	-11331.38	3208864.16	1459848.60	40.5932513	-104.7479139	0.44	
16726.00	90.000	268.950	7225.50	11412.76	1356.92	-11420.37	3208775.19	1459846.35	40.5932472	-104.7482343	0.26	
16816.00	90.090	268.380	7225.43	11502.75	1354.82	-11510.35	3208685.24	1459843.45	40.5932413	-104.7485582	0.64	
16905.00	90.030	268.160	7225.33	11591.72	1352.14	-11599.30	3208596.31	1459839.97	40.5932339	-104.7488786	0.26	
16995.00	90.000	267.210	7225.31	11681.66	1348.50	-11689.23	3208506.43	1459835.53	40.5932238	-104.7492023	1.06	
17084.00	88.770	271.380	7226.27	11770.64	1347.41	-11778.20	3208417.48	1459833.64	40.5932206	-104.7495227	4.88	
17174.00	88.800	266.160	7228.18	11860.57	1345.48	-11868.12	3208327.57	1459830.91	40.5932152	-104.7498465	5.80	
17264.00	88.860	267.620	7230.01	11950.44	1340.59	-11957.97	3208237.78	1459825.22	40.5932017	-104.7501700	1.62	
17353.00	90.120	267.420	7230.81	12039.38	1336.74	-12046.88	3208148.90	1459820.58	40.5931910	-104.7504901	1.43	
17442.00	90.000	270.340	7230.71	12128.36	1335.00	-12135.86	3208059.95	1459818.04	40.5931861	-104.7508105	3.28	
17532.00	89.970	272.000	7230.74	12218.32	1336.84	-12225.83	3207969.96	1459819.07	40.5931910	-104.7511345	1.84	
17622.00	90.220	271.020	7230.59	12308.28	1339.21	-12315.80	3207879.98	1459820.64	40.5931974	-104.7514584	1.12	
17712.00	90.090	269.380	7230.34	12398.27	1339.53	-12405.80	3207789.99	1459820.15	40.5931982	-104.7517825	1.83	
17802.00	90.060	271.220	7230.23	12488.26	1340.00	-12495.79	3207700.00	1459819.82	40.5931993	-104.7521065	2.04	
17891.00	90.120	272.740	7230.09	12577.19	1343.07	-12584.74	3207611.03	1459822.10	40.5932077	-104.7524268	1.71	
17929.00	90.030	273.810	7230.04	12615.11	1345.24	-12622.67	3207573.08	1459823.93	40.5932136	-104.7525634	2.83	LAST BH MWD SURVEY
17953.00‡	90.030	273.810	7230.02	12639.05	1346.84	-12646.62	3207549.12	1459825.31	40.5932179	-104.7526496	0.00	PROJECTION TO BIT (1429'FNL & 475'FWL,SEC.11)

REFERENCE WELLPATH IDENTIFICATION			
Operator	BAYSWATER E&P, LLC	Well	RUBY WEST 4
Field	WELD COUNTY (NAD83/TRUE NORTH)	API	0512351757
Facility	SEC.07-T07N-R65W	Wellbore	RUBY WEST 4 AWB
Slot	SLOT#11 RUBY WEST 4 (2542'FSL & 2426'FWL,SEC.07)		

TARGETS								
Name	TVD [ft]	North [ft]	East [ft]	Grid East [US ft]	Grid North [US ft]	Latitude	Longitude	Shape
SEC.11-T07N-R66W	5.00	345.01	3.06	3220206.89	1458936.65	40.5904770	-104.7071020	polygon
	2D Polygon: dimensions not calculated							
SEC.11/12-T07N-R66W (SB 460')	5.00	345.01	3.06	3220206.89	1458936.65	40.5904770	-104.7071020	polygon
	2D Polygon: dimensions not calculated							
SEC.12-T07N-R66W	5.00	345.01	3.06	3220206.89	1458936.65	40.5904770	-104.7071020	polygon
	2D Polygon: dimensions not calculated							
RUBY WEST 4 BHL REV-1(1420'FNL & 470'FWL,SEC.11)	7196.00	1355.62	-12651.72	3207543.94	1459834.04	40.5932420	-104.7526680	point
RUBY WEST 4 LP REV-1(1420'FNL & 470'FEL,SEC.12)	7196.00	1409.01	-2894.43	3217300.09	1459974.67	40.5933970	-104.7175350	point
RUBY WEST 4 LP REV-2(1450'FNL & 470'FEL,SEC.12)	7206.00	1379.01	-2894.43	3217300.36	1459944.67	40.5933147	-104.7175350	point
RUBY WEST 4 BHL REV-2(1420'FNL & 470'FWL,SEC.11)	7226.00	1355.62	-12651.72	3207543.94	1459834.04	40.5932420	-104.7526680	point

REFERENCE WELLPATH IDENTIFICATION			
Operator	BAYSWATER E&P, LLC	Well	RUBY WEST 4
Field	WELD COUNTY (NAD83/TRUE NORTH)	API	0512351757
Facility	SEC.07-T07N-R65W	Wellbore	RUBY WEST 4 AWB
Slot	SLOT#11 RUBY WEST 4 (2542'FSL & 2426'FWL,SEC.07)		

WELLPATH COMPOSITION - Ref Wellbore: RUBY WEST 4 AWB Ref Wellpath: RUBY WEST 4 AWP					
Start MD [ft]	End MD [ft]	Positional Uncertainty Model	Log Name/Comment	Wellbore	Survey Date
23.00	1480.00	OWSG MWD rev2 + IFR1	OWSG MWD rev2 + IFR1 13-1/2" <165 - 1480>	RUBY WEST 4 AWB	8/8/2022
1480.00	17953.00	OWSG MWD rev2 + IFR1 + Multi-Station Correction	OWSG MWD rev2 + IFR1 + MS 8-1/2" <1617 - 17929>	RUBY WEST 4 AWB	10/17/2022

REFERENCE WELLPATH IDENTIFICATION			
Operator	BAYSWATER E&P, LLC	Well	RUBY WEST 4
Field	WELD COUNTY (NAD83/TRUE NORTH)	API	0512351757
Facility	SEC.07-T07N-R65W	Wellbore	RUBY WEST 4 AWB
Slot	SLOT#11 RUBY WEST 4 (2542'FSL & 2426'FWL,SEC.07)		

WELLPATH COMMENTS				
MD [ft]	Inclination [°]	Azimuth [°]	TVD [ft]	Comment
165.00	0.220	232.930	165.00	FIRST BH SURFACE MWD SURVEY
1480.00	8.260	300.300	1478.38	LAST BH SURFACE MWD SURVEY
1617.00	10.540	302.590	1613.53	FIRST BH MWD SURVEY
8176.00	86.515	273.335	7201.02	CROSS SETBACK HEEL (1425'FNL & 460'FEL,SEC.12)
17929.00	90.030	273.810	7230.04	LAST BH MWD SURVEY
17953.00	90.030	273.810	7230.02	PROJECTION TO BIT (1429'FNL & 475'FWL,SEC.11)