

Project: Garfield County, CO  
 Site: BJU M23A 496 Pad  
 Well: BJU M23A FED 12C-23 496  
 Wellbore: Wellbore #1  
 Design: Design #3  
 Latitude: 39.684479  
 Longitude: -108.140073  
 Ground Level: 8104.0  
 RKB @ 8134.0usft (30')

SECTION DETAILS: Garfield County, CO  
 Geodetic System: Universal Transverse Mercator (US Survey Feet)  
 Datum: NAD 1927 - Western US  
 Ellipsoid: Clarke 1866  
 Zone: Zone 12N (114 W to 108 W)  
 System Datum: Mean Sea Level

REFERENCE INFORMATION  
 Vertical (TVD) Reference: RKB @ 8134.0usft (30')  
 Section (VS) Reference: Slot - 12C-23(0.0N, 0.0E)  
 Measured Depth Reference: RKB @ 8134.0usft (30')  
 Calculation Method: Minimum Curvature

FORMATION TOP DETAILS

TVDPath	MDPath	Formation
3497.0	3731.2	Wasatch
5897.0	6338.8	Wasatch G
6197.0	6664.8	Fort Union
8149.0	8741.5	Ohio Creek
8589.0	9181.6	Williams Fork
11428.0	12021.4	Cameo
11928.0	12521.5	Rollins

SECTION DETAILS

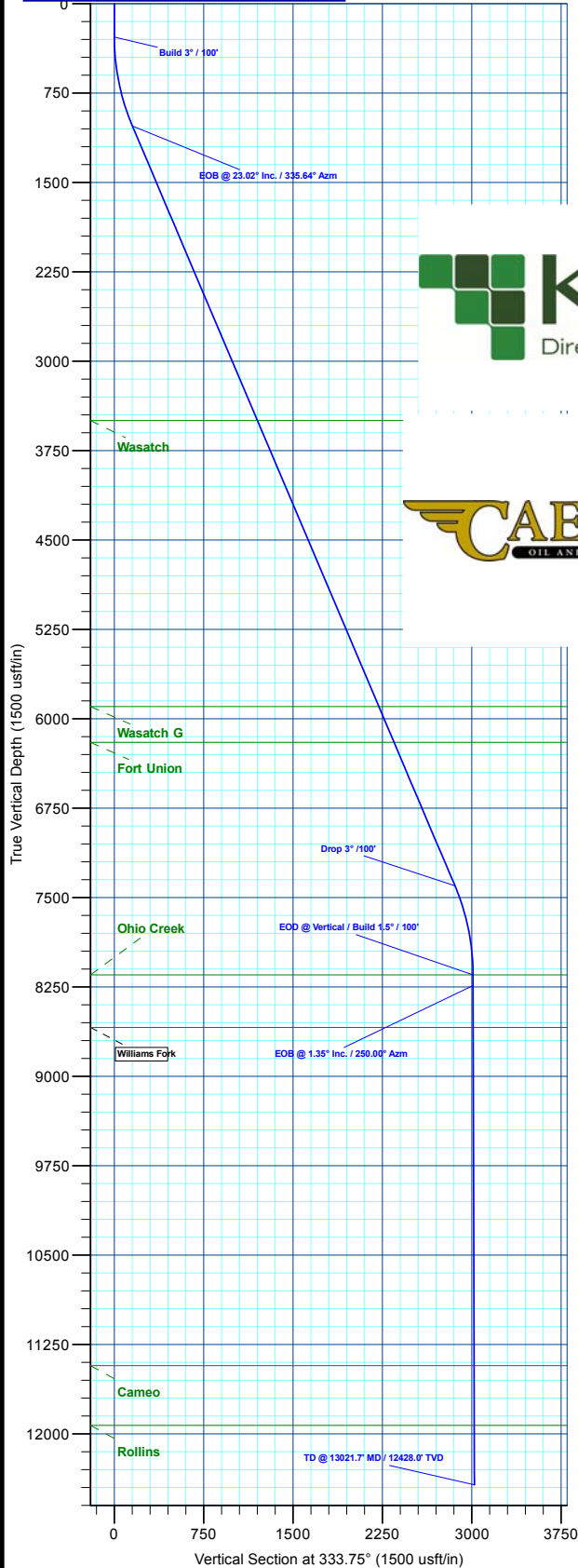
MD	Inc	Azi	TVD	+N/-S	+E/-W	Dleg	TFace	VSect	Annotation
0.0	0.00	0.00	0.0	0.0	0.0	0.00	0.00	0.0	
280.0	0.00	0.00	280.0	0.0	0.0	0.00	0.00	0.0	Build 3° / 100'
1047.3	23.02	335.64	1026.8	138.5	-62.7	3.00	335.64	152.0	EOB @ 23.02° Inc. / 335.64° Azm
7974.2	23.02	335.64	7402.2	2606.1	-1180.0	0.00	0.00	2859.2	Drop 3° / 100'
8741.5	0.00	0.00	8149.0	2744.6	-1242.7	3.00	180.00	3011.2	EOD @ Vertical / Build 1.5° / 100'
8831.7	1.35	250.00	8239.2	2744.2	-1243.7	1.50	250.00	3011.3	EOB @ 1.35° Inc. / 250.00° Azm
13021.7	1.35	250.00	12428.0	2710.4	-1336.7	0.00	0.00	3022.1	TD @ 13021.7' MD / 12428.0' TVD

DESIGN TARGET DETAILS

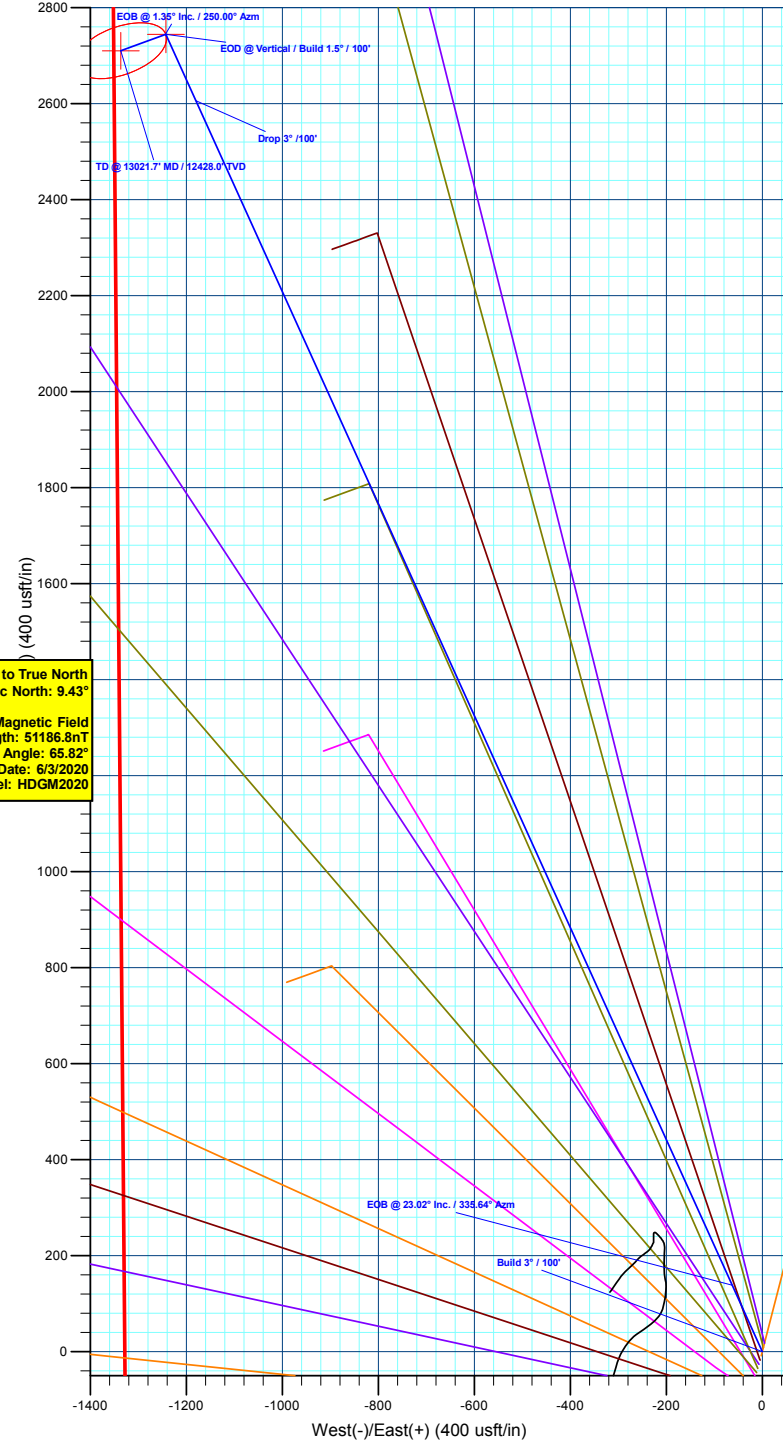
Name	TVD	+N/-S	+E/-W	Northing	Easting	Latitude	Longitude
OHCR - 12C-23	8149.0	2744.6	-1242.7	14426689.28	2443769.93	39.692011	-108.144487
PBHL - 12C-23	12428.0	2710.4	-1336.7	14426652.10	2443677.10	39.691917	-108.144821

WELL DETAILS: BJU M23A FED 12C-23 496

+N/-S	+E/-W	Ground Level	Northing	Easting	Latitude	Longitude
0.0	0.0	8104.0	14423985.70	2445099.50	39.684479	-108.140073



Azimuths to True North  
 Magnetic North: 9.43°  
 Magnetic Field  
 Strength: 51186.8nT  
 Dip Angle: 65.82°  
 Date: 6/3/2020  
 Model: HDGM2020



Plan: Design #3 (BJU M23A FED 12C-23 496/Wellbore #1)  
 Created By: Will Jircik Date: 22:09, January 04 2023



## **Caerus Oil & Gas**

**Garfield County, CO**

**BJU M23A 496 Pad**

**BJU M23A FED 12C-23 496 - Slot 12C-23**

**Wellbore #1**

**Plan: Design #3**

## **KLX Well Planning Report**

**04 January, 2023**



<b>Database:</b>	EDM 5000.1 Single User Db	<b>Local Co-ordinate Reference:</b>	Well BJU M23A FED 12C-23 496 - Slot 12C-23
<b>Company:</b>	Caerus Oil & Gas	<b>TVD Reference:</b>	RKB @ 8134.0usft (30')
<b>Project:</b>	Garfield County, CO	<b>MD Reference:</b>	RKB @ 8134.0usft (30')
<b>Site:</b>	BJU M23A 496 Pad	<b>North Reference:</b>	True
<b>Well:</b>	BJU M23A FED 12C-23 496	<b>Survey Calculation Method:</b>	Minimum Curvature
<b>Wellbore:</b>	Wellbore #1		
<b>Design:</b>	Design #3		

<b>Project</b>	Garfield County, CO		
<b>Map System:</b>	Universal Transverse Mercator (US Survey Fee	<b>System Datum:</b>	Mean Sea Level
<b>Geo Datum:</b>	NAD 1927 - Western US		
<b>Map Zone:</b>	Zone 12N (114 W to 108 W)		

<b>Site</b>	BJU M23A 496 Pad				
<b>Site Position:</b>	<b>Northing:</b>	14,424,028.50 usft	<b>Latitude:</b>	39.684596	
<b>From:</b>	<b>Easting:</b>	2,445,109.60 usft	<b>Longitude:</b>	-108.140032	
<b>Position Uncertainty:</b>	0.0 usft	<b>Slot Radius:</b>	13-3/16 "	<b>Grid Convergence:</b>	1.83 °

<b>Well</b>	BJU M23A FED 12C-23 496 - Slot 12C-23					
<b>Well Position</b>	<b>+N/-S</b>	-42.5 usft	<b>Northing:</b>	14,423,985.70 usft	<b>Latitude:</b>	39.684479
	<b>+E/-W</b>	-11.5 usft	<b>Easting:</b>	2,445,099.50 usft	<b>Longitude:</b>	-108.140073
<b>Position Uncertainty</b>		0.0 usft	<b>Wellhead Elevation:</b>		<b>Ground Level:</b>	8,104.0 usft

<b>Wellbore</b>	Wellbore #1				
<b>Magnetics</b>	<b>Model Name</b>	<b>Sample Date</b>	<b>Declination (°)</b>	<b>Dip Angle (°)</b>	<b>Field Strength (nT)</b>
	HDGM2020	6/3/2020	9.43	65.82	51,186.80000000

<b>Design</b>	Design #3			
<b>Audit Notes:</b>				
<b>Version:</b>	<b>Phase:</b>	PLAN	<b>Tie On Depth:</b>	0.0
<b>Vertical Section:</b>	<b>Depth From (TVD) (usft)</b>	<b>+N/-S (usft)</b>	<b>+E/-W (usft)</b>	<b>Direction (°)</b>
	0.0	0.0	0.0	333.75

<b>Plan Sections</b>											
Measured Depth (usft)	Inclination (°)	Azimuth (°)	Vertical Depth (usft)	+N/-S (usft)	+E/-W (usft)	Dogleg Rate (°/100usft)	Build Rate (°/100usft)	Turn Rate (°/100usft)	TFO (°)	Target	
0.0	0.00	0.00	0.0	0.0	0.0	0.00	0.00	0.00	0.00		
280.0	0.00	0.00	280.0	0.0	0.0	0.00	0.00	0.00	0.00		
1,047.3	23.02	335.64	1,026.8	138.5	-62.7	3.00	3.00	0.00	335.64		
7,974.2	23.02	335.64	7,402.2	2,606.1	-1,180.0	0.00	0.00	0.00	0.00		
8,741.5	0.00	0.00	8,149.0	2,744.6	-1,242.7	3.00	-3.00	0.00	180.00	OHCR - 12C-23	
8,831.7	1.35	250.00	8,239.2	2,744.2	-1,243.7	1.50	1.50	-121.95	250.00		
13,021.7	1.35	250.00	12,428.0	2,710.4	-1,336.7	0.00	0.00	0.00	0.00	PBHL - 12C-23	

<b>Database:</b>	EDM 5000.1 Single User Db	<b>Local Co-ordinate Reference:</b>	Well BJU M23A FED 12C-23 496 - Slot 12C-23
<b>Company:</b>	Caerus Oil & Gas	<b>TVD Reference:</b>	RKB @ 8134.0usft (30')
<b>Project:</b>	Garfield County, CO	<b>MD Reference:</b>	RKB @ 8134.0usft (30')
<b>Site:</b>	BJU M23A 496 Pad	<b>North Reference:</b>	True
<b>Well:</b>	BJU M23A FED 12C-23 496	<b>Survey Calculation Method:</b>	Minimum Curvature
<b>Wellbore:</b>	Wellbore #1		
<b>Design:</b>	Design #3		

**Planned Survey**

Measured Depth (usft)	Inclination (°)	Azimuth (°)	Vertical Depth (usft)	+N/-S (usft)	+E/-W (usft)	Vertical Section (usft)	Dogleg Rate (°/100usft)	Build Rate (°/100usft)	Turn Rate (°/100usft)
0.0	0.00	0.00	0.0	0.0	0.0	0.0	0.00	0.00	0.00
100.0	0.00	0.00	100.0	0.0	0.0	0.0	0.00	0.00	0.00
200.0	0.00	0.00	200.0	0.0	0.0	0.0	0.00	0.00	0.00
<b>Build 3° / 100'</b>									
280.0	0.00	0.00	280.0	0.0	0.0	0.0	0.00	0.00	0.00
300.0	0.60	335.64	300.0	0.1	0.0	0.1	3.00	3.00	0.00
400.0	3.60	335.64	399.9	3.4	-1.6	3.8	3.00	3.00	0.00
500.0	6.60	335.64	499.5	11.5	-5.2	12.7	3.00	3.00	0.00
600.0	9.60	335.64	598.5	24.4	-11.0	26.7	3.00	3.00	0.00
700.0	12.60	335.64	696.6	41.9	-19.0	46.0	3.00	3.00	0.00
800.0	15.60	335.64	793.6	64.1	-29.0	70.3	3.00	3.00	0.00
900.0	18.60	335.64	889.2	90.9	-41.1	99.7	3.00	3.00	0.00
1,000.0	21.60	335.64	983.1	122.2	-55.3	134.0	3.00	3.00	0.00
<b>EOB @ 23.02° Inc. / 335.64° Azm</b>									
1,047.3	23.02	335.64	1,026.8	138.5	-62.7	152.0	3.00	3.00	0.00
1,100.0	23.02	335.64	1,075.3	157.3	-71.2	172.6	0.00	0.00	0.00
1,200.0	23.02	335.64	1,167.4	192.9	-87.4	211.7	0.00	0.00	0.00
1,300.0	23.02	335.64	1,259.4	228.6	-103.5	250.8	0.00	0.00	0.00
1,400.0	23.02	335.64	1,351.4	264.2	-119.6	289.8	0.00	0.00	0.00
1,500.0	23.02	335.64	1,443.5	299.8	-135.7	328.9	0.00	0.00	0.00
1,600.0	23.02	335.64	1,535.5	335.4	-151.9	368.0	0.00	0.00	0.00
1,700.0	23.02	335.64	1,627.6	371.0	-168.0	407.1	0.00	0.00	0.00
1,800.0	23.02	335.64	1,719.6	406.7	-184.1	446.2	0.00	0.00	0.00
1,900.0	23.02	335.64	1,811.6	442.3	-200.3	485.2	0.00	0.00	0.00
2,000.0	23.02	335.64	1,903.7	477.9	-216.4	524.3	0.00	0.00	0.00
2,100.0	23.02	335.64	1,995.7	513.5	-232.5	563.4	0.00	0.00	0.00
2,200.0	23.02	335.64	2,087.7	549.2	-248.6	602.5	0.00	0.00	0.00
2,300.0	23.02	335.64	2,179.8	584.8	-264.8	641.6	0.00	0.00	0.00
2,400.0	23.02	335.64	2,271.8	620.4	-280.9	680.7	0.00	0.00	0.00
2,500.0	23.02	335.64	2,363.9	656.0	-297.0	719.7	0.00	0.00	0.00
2,600.0	23.02	335.64	2,455.9	691.6	-313.2	758.8	0.00	0.00	0.00
2,700.0	23.02	335.64	2,547.9	727.3	-329.3	797.9	0.00	0.00	0.00
2,800.0	23.02	335.64	2,640.0	762.9	-345.4	837.0	0.00	0.00	0.00
2,900.0	23.02	335.64	2,732.0	798.5	-361.5	876.1	0.00	0.00	0.00
3,000.0	23.02	335.64	2,824.0	834.1	-377.7	915.2	0.00	0.00	0.00
3,100.0	23.02	335.64	2,916.1	869.8	-393.8	954.2	0.00	0.00	0.00
3,200.0	23.02	335.64	3,008.1	905.4	-409.9	993.3	0.00	0.00	0.00
3,300.0	23.02	335.64	3,100.2	941.0	-426.1	1,032.4	0.00	0.00	0.00
3,400.0	23.02	335.64	3,192.2	976.6	-442.2	1,071.5	0.00	0.00	0.00
3,500.0	23.02	335.64	3,284.2	1,012.2	-458.3	1,110.6	0.00	0.00	0.00
3,600.0	23.02	335.64	3,376.3	1,047.9	-474.4	1,149.6	0.00	0.00	0.00
3,700.0	23.02	335.64	3,468.3	1,083.5	-490.6	1,188.7	0.00	0.00	0.00
<b>Wasatch</b>									
3,731.2	23.02	335.64	3,497.0	1,094.6	-495.6	1,200.9	0.00	0.00	0.00
3,800.0	23.02	335.64	3,560.3	1,119.1	-506.7	1,227.8	0.00	0.00	0.00
3,900.0	23.02	335.64	3,652.4	1,154.7	-522.8	1,266.9	0.00	0.00	0.00
4,000.0	23.02	335.64	3,744.4	1,190.4	-539.0	1,306.0	0.00	0.00	0.00
4,100.0	23.02	335.64	3,836.5	1,226.0	-555.1	1,345.1	0.00	0.00	0.00
4,200.0	23.02	335.64	3,928.5	1,261.6	-571.2	1,384.1	0.00	0.00	0.00
4,300.0	23.02	335.64	4,020.5	1,297.2	-587.4	1,423.2	0.00	0.00	0.00
4,400.0	23.02	335.64	4,112.6	1,332.8	-603.5	1,462.3	0.00	0.00	0.00
4,500.0	23.02	335.64	4,204.6	1,368.5	-619.6	1,501.4	0.00	0.00	0.00
4,600.0	23.02	335.64	4,296.6	1,404.1	-635.7	1,540.5	0.00	0.00	0.00

<b>Database:</b>	EDM 5000.1 Single User Db	<b>Local Co-ordinate Reference:</b>	Well BJU M23A FED 12C-23 496 - Slot 12C-23
<b>Company:</b>	Caerus Oil & Gas	<b>TVD Reference:</b>	RKB @ 8134.0usft (30')
<b>Project:</b>	Garfield County, CO	<b>MD Reference:</b>	RKB @ 8134.0usft (30')
<b>Site:</b>	BJU M23A 496 Pad	<b>North Reference:</b>	True
<b>Well:</b>	BJU M23A FED 12C-23 496	<b>Survey Calculation Method:</b>	Minimum Curvature
<b>Wellbore:</b>	Wellbore #1		
<b>Design:</b>	Design #3		

Planned Survey									
Measured Depth (usft)	Inclination (°)	Azimuth (°)	Vertical Depth (usft)	+N/-S (usft)	+E/-W (usft)	Vertical Section (usft)	Dogleg Rate (°/100usft)	Build Rate (°/100usft)	Turn Rate (°/100usft)
4,700.0	23.02	335.64	4,388.7	1,439.7	-651.9	1,579.6	0.00	0.00	0.00
4,800.0	23.02	335.64	4,480.7	1,475.3	-668.0	1,618.6	0.00	0.00	0.00
4,900.0	23.02	335.64	4,572.8	1,511.0	-684.1	1,657.7	0.00	0.00	0.00
5,000.0	23.02	335.64	4,664.8	1,546.6	-700.3	1,696.8	0.00	0.00	0.00
5,100.0	23.02	335.64	4,756.8	1,582.2	-716.4	1,735.9	0.00	0.00	0.00
5,200.0	23.02	335.64	4,848.9	1,617.8	-732.5	1,775.0	0.00	0.00	0.00
5,300.0	23.02	335.64	4,940.9	1,653.4	-748.6	1,814.0	0.00	0.00	0.00
5,400.0	23.02	335.64	5,032.9	1,689.1	-764.8	1,853.1	0.00	0.00	0.00
5,500.0	23.02	335.64	5,125.0	1,724.7	-780.9	1,892.2	0.00	0.00	0.00
5,600.0	23.02	335.64	5,217.0	1,760.3	-797.0	1,931.3	0.00	0.00	0.00
5,700.0	23.02	335.64	5,309.1	1,795.9	-813.2	1,970.4	0.00	0.00	0.00
5,800.0	23.02	335.64	5,401.1	1,831.6	-829.3	2,009.5	0.00	0.00	0.00
5,900.0	23.02	335.64	5,493.1	1,867.2	-845.4	2,048.5	0.00	0.00	0.00
6,000.0	23.02	335.64	5,585.2	1,902.8	-861.5	2,087.6	0.00	0.00	0.00
6,100.0	23.02	335.64	5,677.2	1,938.4	-877.7	2,126.7	0.00	0.00	0.00
6,200.0	23.02	335.64	5,769.2	1,974.1	-893.8	2,165.8	0.00	0.00	0.00
6,300.0	23.02	335.64	5,861.3	2,009.7	-909.9	2,204.9	0.00	0.00	0.00
<b>Wasatch G</b>									
6,338.8	23.02	335.64	5,897.0	2,023.5	-916.2	2,220.0	0.00	0.00	0.00
6,400.0	23.02	335.64	5,953.3	2,045.3	-926.1	2,244.0	0.00	0.00	0.00
6,500.0	23.02	335.64	6,045.4	2,080.9	-942.2	2,283.0	0.00	0.00	0.00
6,600.0	23.02	335.64	6,137.4	2,116.5	-958.3	2,322.1	0.00	0.00	0.00
<b>Fort Union</b>									
6,664.8	23.02	335.64	6,197.0	2,139.6	-968.8	2,347.4	0.00	0.00	0.00
6,700.0	23.02	335.64	6,229.4	2,152.2	-974.4	2,361.2	0.00	0.00	0.00
6,800.0	23.02	335.64	6,321.5	2,187.8	-990.6	2,400.3	0.00	0.00	0.00
6,900.0	23.02	335.64	6,413.5	2,223.4	-1,006.7	2,439.4	0.00	0.00	0.00
7,000.0	23.02	335.64	6,505.5	2,259.0	-1,022.8	2,478.4	0.00	0.00	0.00
7,100.0	23.02	335.64	6,597.6	2,294.7	-1,039.0	2,517.5	0.00	0.00	0.00
7,200.0	23.02	335.64	6,689.6	2,330.3	-1,055.1	2,556.6	0.00	0.00	0.00
7,300.0	23.02	335.64	6,781.7	2,365.9	-1,071.2	2,595.7	0.00	0.00	0.00
7,400.0	23.02	335.64	6,873.7	2,401.5	-1,087.3	2,634.8	0.00	0.00	0.00
7,500.0	23.02	335.64	6,965.7	2,437.1	-1,103.5	2,673.9	0.00	0.00	0.00
7,600.0	23.02	335.64	7,057.8	2,472.8	-1,119.6	2,712.9	0.00	0.00	0.00
7,700.0	23.02	335.64	7,149.8	2,508.4	-1,135.7	2,752.0	0.00	0.00	0.00
7,800.0	23.02	335.64	7,241.8	2,544.0	-1,151.9	2,791.1	0.00	0.00	0.00
7,900.0	23.02	335.64	7,333.9	2,579.6	-1,168.0	2,830.2	0.00	0.00	0.00
<b>Drop 3° /100'</b>									
7,974.2	23.02	335.64	7,402.2	2,606.1	-1,180.0	2,859.2	0.00	0.00	0.00
8,000.0	22.25	335.64	7,426.0	2,615.1	-1,184.1	2,869.1	3.00	-3.00	0.00
8,100.0	19.25	335.64	7,519.5	2,647.4	-1,198.7	2,904.5	3.00	-3.00	0.00
8,200.0	16.25	335.64	7,614.7	2,675.1	-1,211.2	2,935.0	3.00	-3.00	0.00
8,300.0	13.25	335.64	7,711.4	2,698.3	-1,221.7	2,960.4	3.00	-3.00	0.00
8,400.0	10.25	335.64	7,809.3	2,716.9	-1,230.1	2,980.7	3.00	-3.00	0.00
8,500.0	7.25	335.64	7,908.1	2,730.7	-1,236.4	2,995.9	3.00	-3.00	0.00
8,600.0	4.25	335.64	8,007.6	2,739.8	-1,240.5	3,005.9	3.00	-3.00	0.00
8,700.0	1.25	335.64	8,107.5	2,744.2	-1,242.5	3,010.7	3.00	-3.00	0.00
<b>EOD @ Vertical / Build 1.5° / 100' - Ohio Creek</b>									
8,741.5	0.00	0.00	8,149.0	2,744.6	-1,242.7	3,011.2	3.00	-3.00	0.00
8,800.0	0.88	250.00	8,207.5	2,744.4	-1,243.1	3,011.2	1.50	1.50	0.00
<b>EOB @ 1.35° Inc. / 250.00° Azm</b>									
8,831.7	1.35	250.00	8,239.2	2,744.2	-1,243.7	3,011.3	1.50	1.50	0.00

<b>Database:</b>	EDM 5000.1 Single User Db	<b>Local Co-ordinate Reference:</b>	Well BJU M23A FED 12C-23 496 - Slot 12C-23
<b>Company:</b>	Caerus Oil & Gas	<b>TVD Reference:</b>	RKB @ 8134.0usft (30')
<b>Project:</b>	Garfield County, CO	<b>MD Reference:</b>	RKB @ 8134.0usft (30')
<b>Site:</b>	BJU M23A 496 Pad	<b>North Reference:</b>	True
<b>Well:</b>	BJU M23A FED 12C-23 496	<b>Survey Calculation Method:</b>	Minimum Curvature
<b>Wellbore:</b>	Wellbore #1		
<b>Design:</b>	Design #3		

**Planned Survey**

Measured Depth (usft)	Inclination (°)	Azimuth (°)	Vertical Depth (usft)	+N/-S (usft)	+E/-W (usft)	Vertical Section (usft)	Dogleg Rate (°/100usft)	Build Rate (°/100usft)	Turn Rate (°/100usft)
8,900.0	1.35	250.00	8,307.5	2,743.7	-1,245.2	3,011.5	0.00	0.00	0.00
9,000.0	1.35	250.00	8,407.4	2,742.9	-1,247.4	3,011.7	0.00	0.00	0.00
9,100.0	1.35	250.00	8,507.4	2,742.1	-1,249.6	3,012.0	0.00	0.00	0.00
<b>Williams Fork</b>									
9,181.6	1.35	250.00	8,589.0	2,741.4	-1,251.5	3,012.2	0.00	0.00	0.00
9,200.0	1.35	250.00	8,607.4	2,741.3	-1,251.9	3,012.2	0.00	0.00	0.00
9,300.0	1.35	250.00	8,707.4	2,740.5	-1,254.1	3,012.5	0.00	0.00	0.00
9,400.0	1.35	250.00	8,807.3	2,739.6	-1,256.3	3,012.8	0.00	0.00	0.00
9,500.0	1.35	250.00	8,907.3	2,738.8	-1,258.5	3,013.0	0.00	0.00	0.00
9,600.0	1.35	250.00	9,007.3	2,738.0	-1,260.7	3,013.3	0.00	0.00	0.00
9,700.0	1.35	250.00	9,107.2	2,737.2	-1,263.0	3,013.5	0.00	0.00	0.00
9,800.0	1.35	250.00	9,207.2	2,736.4	-1,265.2	3,013.8	0.00	0.00	0.00
9,900.0	1.35	250.00	9,307.2	2,735.6	-1,267.4	3,014.0	0.00	0.00	0.00
10,000.0	1.35	250.00	9,407.2	2,734.8	-1,269.6	3,014.3	0.00	0.00	0.00
10,100.0	1.35	250.00	9,507.1	2,734.0	-1,271.8	3,014.6	0.00	0.00	0.00
10,200.0	1.35	250.00	9,607.1	2,733.2	-1,274.0	3,014.8	0.00	0.00	0.00
10,300.0	1.35	250.00	9,707.1	2,732.4	-1,276.3	3,015.1	0.00	0.00	0.00
10,400.0	1.35	250.00	9,807.0	2,731.6	-1,278.5	3,015.3	0.00	0.00	0.00
10,500.0	1.35	250.00	9,907.0	2,730.8	-1,280.7	3,015.6	0.00	0.00	0.00
10,600.0	1.35	250.00	10,007.0	2,730.0	-1,282.9	3,015.8	0.00	0.00	0.00
10,700.0	1.35	250.00	10,107.0	2,729.1	-1,285.1	3,016.1	0.00	0.00	0.00
10,800.0	1.35	250.00	10,206.9	2,728.3	-1,287.4	3,016.4	0.00	0.00	0.00
10,900.0	1.35	250.00	10,306.9	2,727.5	-1,289.6	3,016.6	0.00	0.00	0.00
11,000.0	1.35	250.00	10,406.9	2,726.7	-1,291.8	3,016.9	0.00	0.00	0.00
11,100.0	1.35	250.00	10,506.9	2,725.9	-1,294.0	3,017.1	0.00	0.00	0.00
11,200.0	1.35	250.00	10,606.8	2,725.1	-1,296.2	3,017.4	0.00	0.00	0.00
11,300.0	1.35	250.00	10,706.8	2,724.3	-1,298.5	3,017.6	0.00	0.00	0.00
11,400.0	1.35	250.00	10,806.8	2,723.5	-1,300.7	3,017.9	0.00	0.00	0.00
11,500.0	1.35	250.00	10,906.7	2,722.7	-1,302.9	3,018.2	0.00	0.00	0.00
11,600.0	1.35	250.00	11,006.7	2,721.9	-1,305.1	3,018.4	0.00	0.00	0.00
11,700.0	1.35	250.00	11,106.7	2,721.1	-1,307.3	3,018.7	0.00	0.00	0.00
11,800.0	1.35	250.00	11,206.7	2,720.3	-1,309.5	3,018.9	0.00	0.00	0.00
11,900.0	1.35	250.00	11,306.6	2,719.5	-1,311.8	3,019.2	0.00	0.00	0.00
12,000.0	1.35	250.00	11,406.6	2,718.6	-1,314.0	3,019.4	0.00	0.00	0.00
<b>Cameo</b>									
12,021.4	1.35	250.00	11,428.0	2,718.5	-1,314.5	3,019.5	0.00	0.00	0.00
12,100.0	1.35	250.00	11,506.6	2,717.8	-1,316.2	3,019.7	0.00	0.00	0.00
12,200.0	1.35	250.00	11,606.5	2,717.0	-1,318.4	3,020.0	0.00	0.00	0.00
12,300.0	1.35	250.00	11,706.5	2,716.2	-1,320.6	3,020.2	0.00	0.00	0.00
12,400.0	1.35	250.00	11,806.5	2,715.4	-1,322.9	3,020.5	0.00	0.00	0.00
12,500.0	1.35	250.00	11,906.5	2,714.6	-1,325.1	3,020.7	0.00	0.00	0.00
<b>Rollins</b>									
12,521.5	1.35	250.00	11,928.0	2,714.4	-1,325.6	3,020.8	0.00	0.00	0.00
12,600.0	1.35	250.00	12,006.4	2,713.8	-1,327.3	3,021.0	0.00	0.00	0.00
12,700.0	1.35	250.00	12,106.4	2,713.0	-1,329.5	3,021.2	0.00	0.00	0.00
12,800.0	1.35	250.00	12,206.4	2,712.2	-1,331.7	3,021.5	0.00	0.00	0.00
12,900.0	1.35	250.00	12,306.4	2,711.4	-1,334.0	3,021.8	0.00	0.00	0.00
13,000.0	1.35	250.00	12,406.3	2,710.6	-1,336.2	3,022.0	0.00	0.00	0.00
<b>TD @ 13021.7' MD / 12428.0' TVD</b>									
13,021.7	1.35	250.00	12,428.0	2,710.4	-1,336.7	3,022.1	0.00	0.00	0.00

<b>Database:</b>	EDM 5000.1 Single User Db	<b>Local Co-ordinate Reference:</b>	Well BJU M23A FED 12C-23 496 - Slot 12C-23
<b>Company:</b>	Caerus Oil & Gas	<b>TVD Reference:</b>	RKB @ 8134.0usft (30')
<b>Project:</b>	Garfield County, CO	<b>MD Reference:</b>	RKB @ 8134.0usft (30')
<b>Site:</b>	BJU M23A 496 Pad	<b>North Reference:</b>	True
<b>Well:</b>	BJU M23A FED 12C-23 496	<b>Survey Calculation Method:</b>	Minimum Curvature
<b>Wellbore:</b>	Wellbore #1		
<b>Design:</b>	Design #3		

**Design Targets**

Target Name - hit/miss target - Shape	Dip Angle (°)	Dip Dir. (°)	TVD (usft)	+N/-S (usft)	+E/-W (usft)	Northing (usft)	Easting (usft)	Latitude	Longitude
OHCR - 12C-23 - plan hits target center - Point	0.00	0.00	8,149.0	2,744.6	-1,242.7	14,426,689.28	2,443,769.93	39.692011	-108.144487
PBHL - 12C-23 - plan hits target center - Ellipse (radii L100.0 W50.0 on 250.00 azi)	0.00	0.00	12,428.0	2,710.4	-1,336.7	14,426,652.10	2,443,677.10	39.691917	-108.144821

**Formations**

Measured Depth (usft)	Vertical Depth (usft)	Name	Lithology	Dip (°)	Dip Direction (°)
3,731.2	3,497.0	Wasatch			
6,338.8	5,897.0	Wasatch G			
6,664.8	6,197.0	Fort Union			
8,741.5	8,149.0	Ohio Creek			
9,181.6	8,589.0	Williams Fork			
12,021.4	11,428.0	Cameo			
12,521.5	11,928.0	Rollins			

**Plan Annotations**

Measured Depth (usft)	Vertical Depth (usft)	Local Coordinates		Comment
		+N/-S (usft)	+E/-W (usft)	
280.0	280.0	0.0	0.0	Build 3° / 100'
1,047.3	1,026.8	138.5	-62.7	EOB @ 23.02° Inc. / 335.64° Azm
7,974.2	7,402.2	2,606.1	-1,180.0	Drop 3° /100'
8,741.5	8,149.0	2,744.6	-1,242.7	EOD @ Vertical / Build 1.5° / 100'
8,831.7	8,239.2	2,744.2	-1,243.7	EOB @ 1.35° Inc. / 250.00° Azm
13,021.7	12,428.0	2,710.4	-1,336.7	TD @ 13021.7' MD / 12428.0' TVD