



**RADIAL BOND TOOL
GAMMA RAY
CCL**

Company CHEVRON
Well HERBST #1
Field WATTENBERG
County WELD
State CO
Country USA

Location: API #: 05-123-05138
SWSW
LAT. 40.292470 LONG. -104.544040
SEC 22 TWP 4N RGE 64W
Permanent Datum GL Elevation 4672'
Log Measured From KB 10'
Drilling Measured From KB
Other Services
Elevation
K.B. 4682'
D.F. 4681'
G.L. 4672'

Date 11-8-22
Run Number ONE
Depth Driller 7116'
Depth Logger 1960'
Bottom Logged Interval 1964'
Top Log Interval SURFACE
Open Hole Size 9.625"
Type Fluid WATER
Density / Viscosity NA
Max. Recorded Temp. 99.02°F
Estimated Cement Top NA
Time Well Ready ON ARRIVAL
Time Logger on Bottom NA
Equipment Number 3815
Location GREELEY, CO
Recorded By P.GULLICKSON
Witnessed By D. RUSSELL

Borehole Record				Tubing Record			
Run Number	Bit	From	To	Size	Weight	From	To


Casing Record
Surface String 9.625" Size Wgt/Ft 36# Top Bottom SURFACE 255'
Prot. String
Production String 4.5" 11.6# SURFACE 7098'
Liner

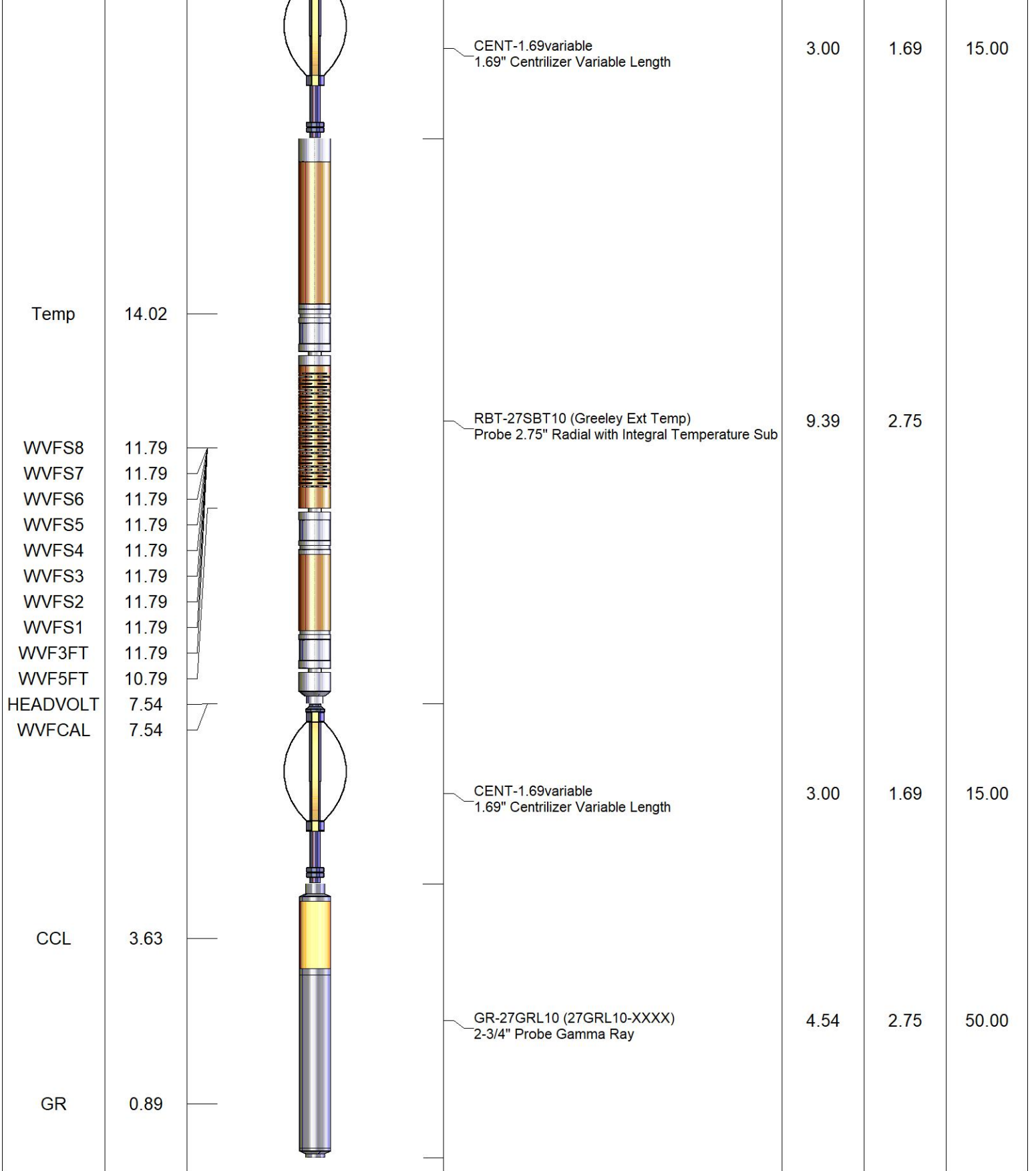
<<< Fold Here >>>

All interpretations are opinions based on inferences from electrical or other measurements and we cannot and do not guarantee the accuracy or correctness of any interpretation, and we shall not, except in the case of gross or willful negligence on our part, be liable or responsible for any loss, costs, damages, or expenses incurred or sustained by anyone resulting from any interpretation made by any of our officers, agents or employees. These interpretations are also subject to our general terms and conditions set out in our current Price Schedule.

Comments

**RAN CBL TO VERIFY CEMENT BOND
WELL LOADED UPON ARRIVAL,**

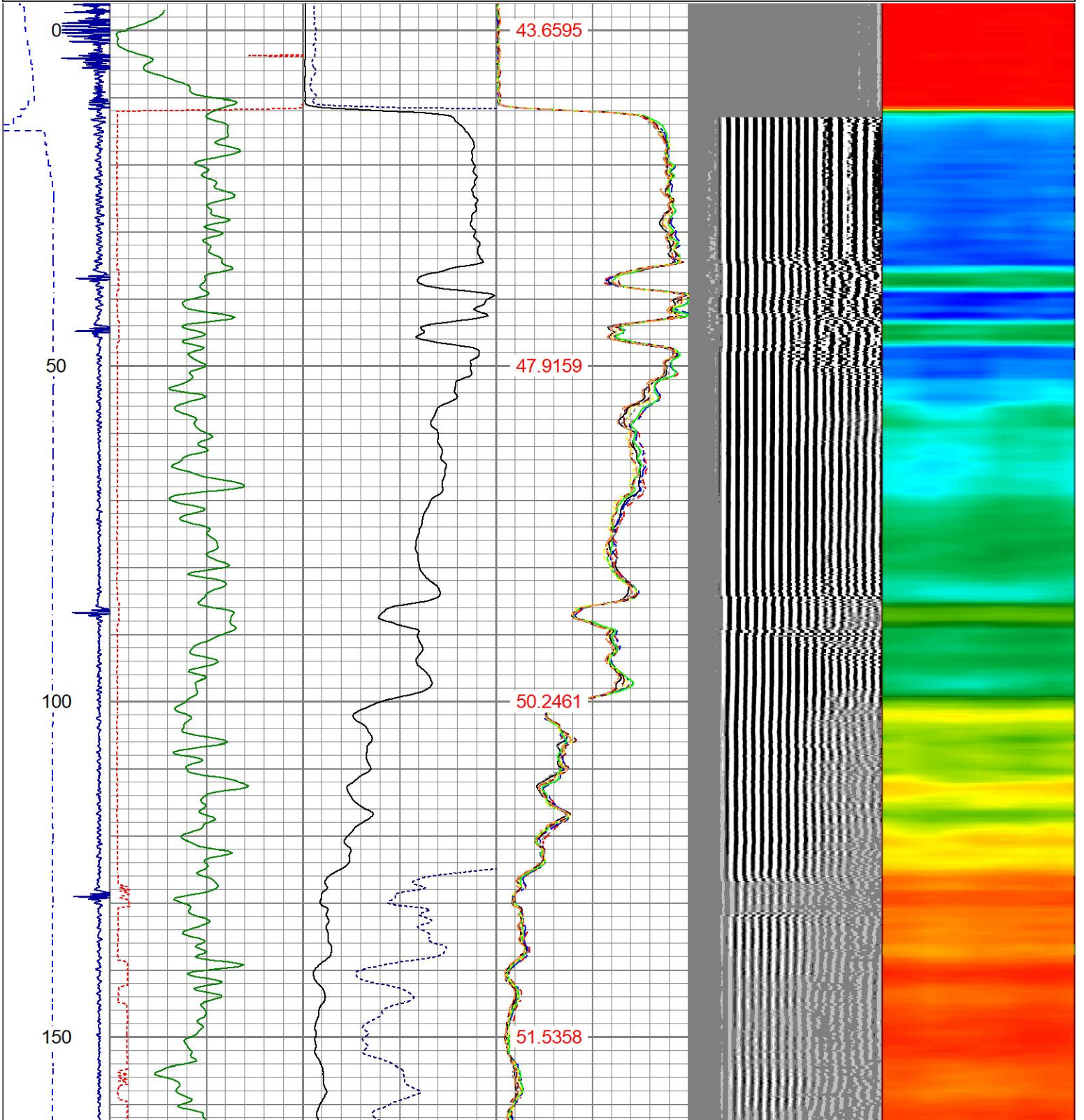
Sensor	Offset (ft)	Schematic	Description	Length (ft)	O.D. (in)	Weight (lb)
			CHD-1_11/16_Cablehead 1 11/16 Cablehead	1.00	1.68	5.00

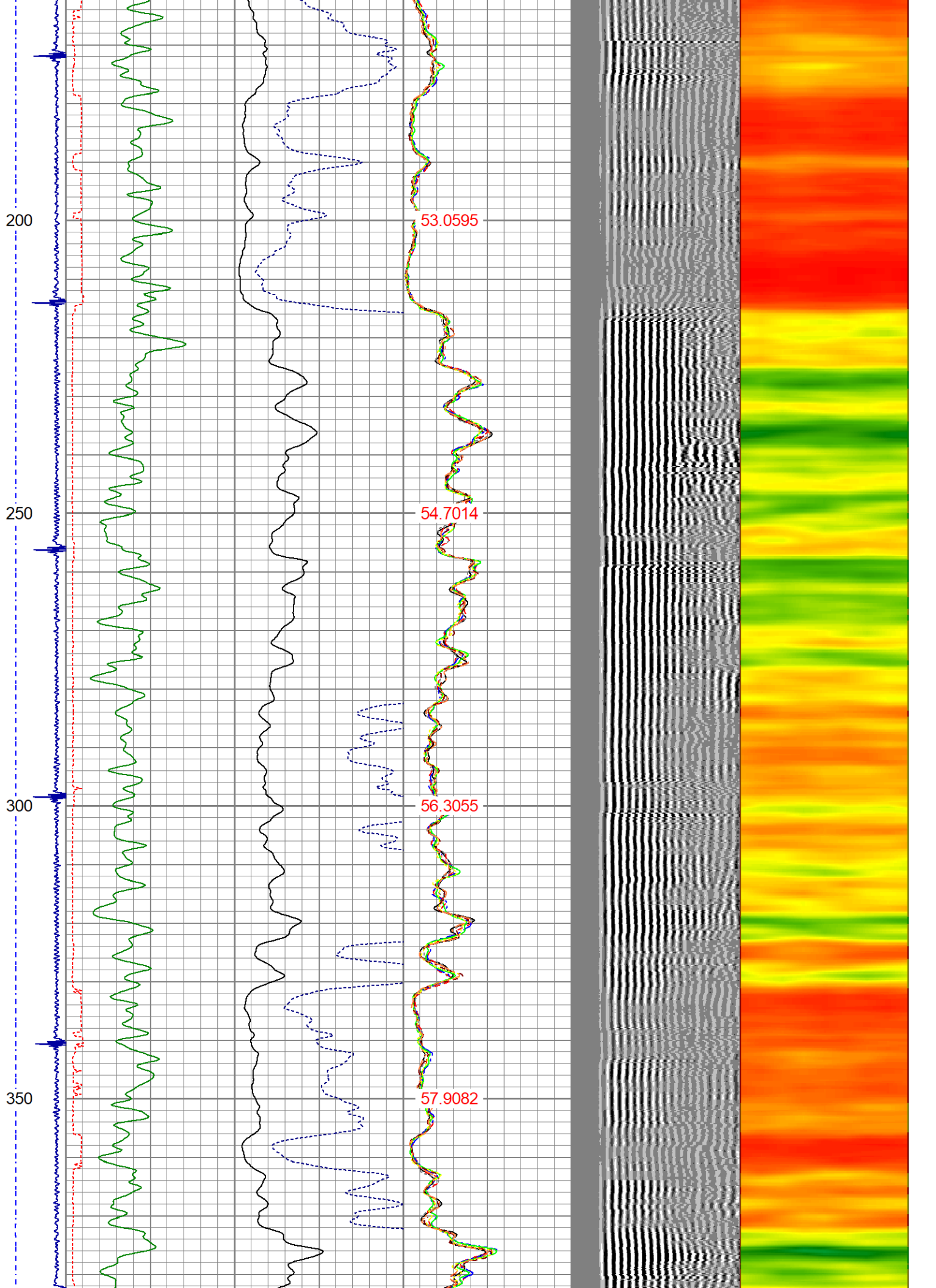


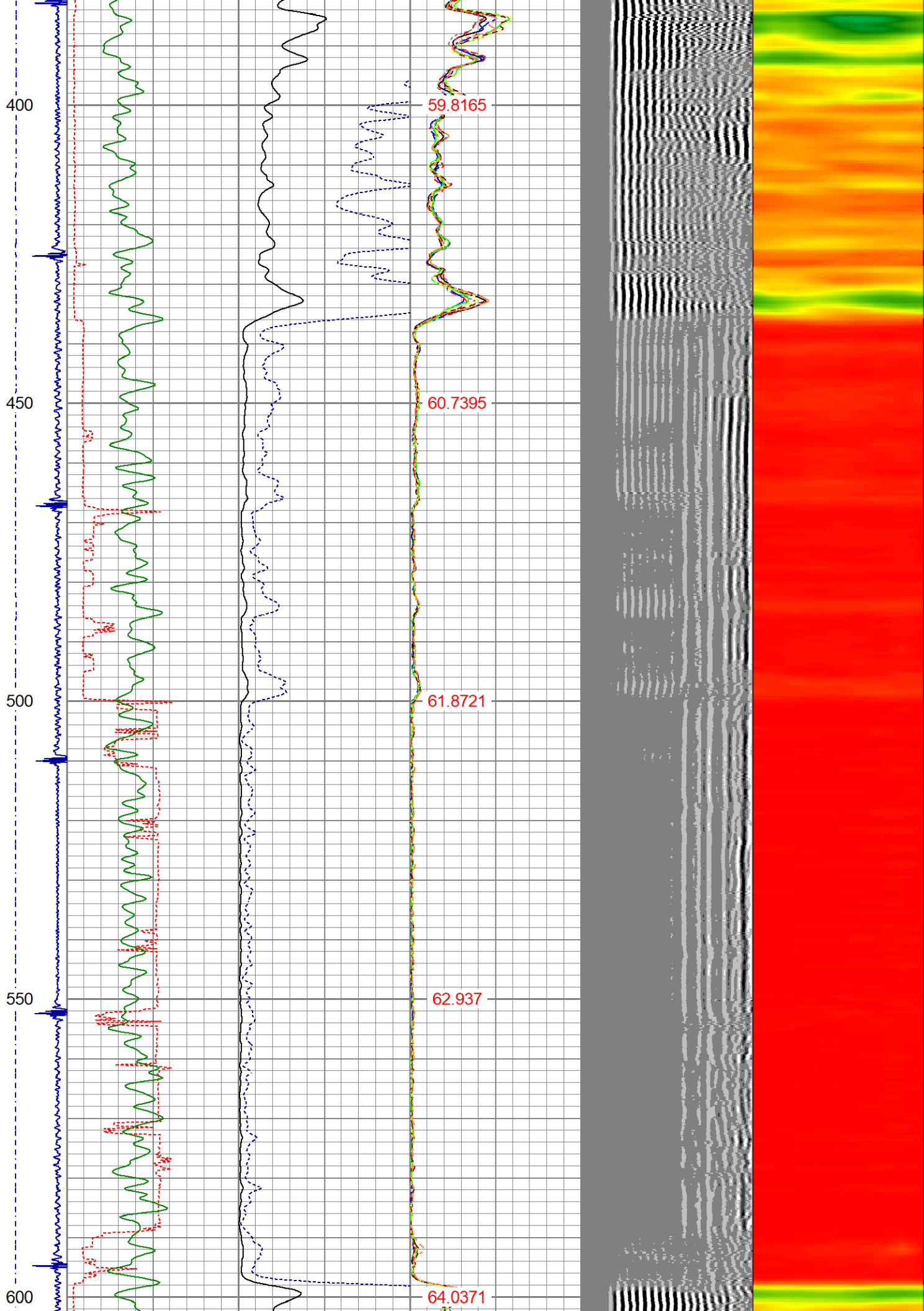
Dataset: herbst 1.db: field/well/run1/pass11
 Total length: 20.93 ft
 Total weight: 85.00 lb
 O.D.: 2.75 in

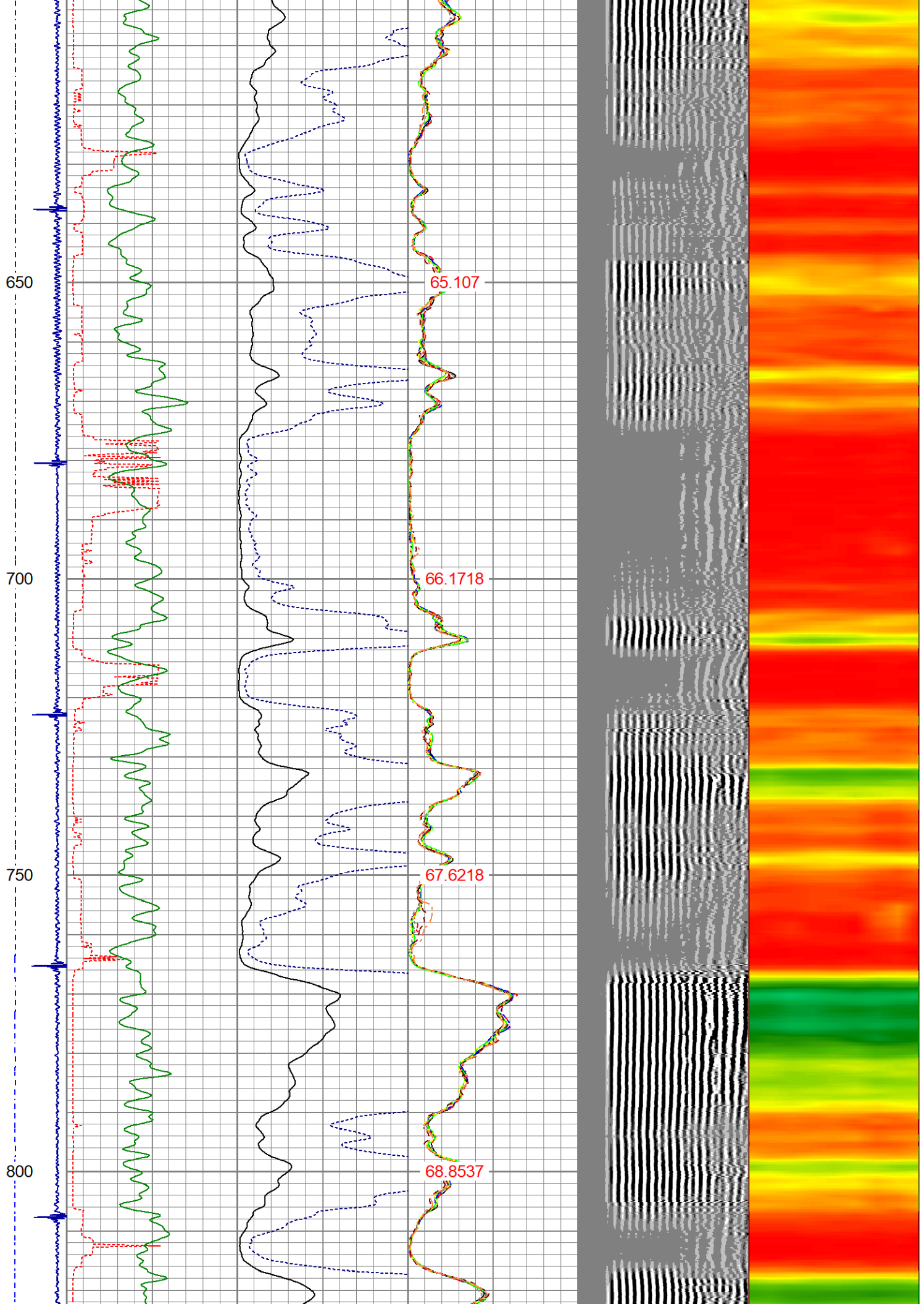
Database File herbst 1.db
 Dataset Pathname pass11
 Presentation Format ips_rbtcolor
 Dataset Creation Tue Nov 08 09:08:15 2022
 Charted by Depth in Foot scaled 1:240

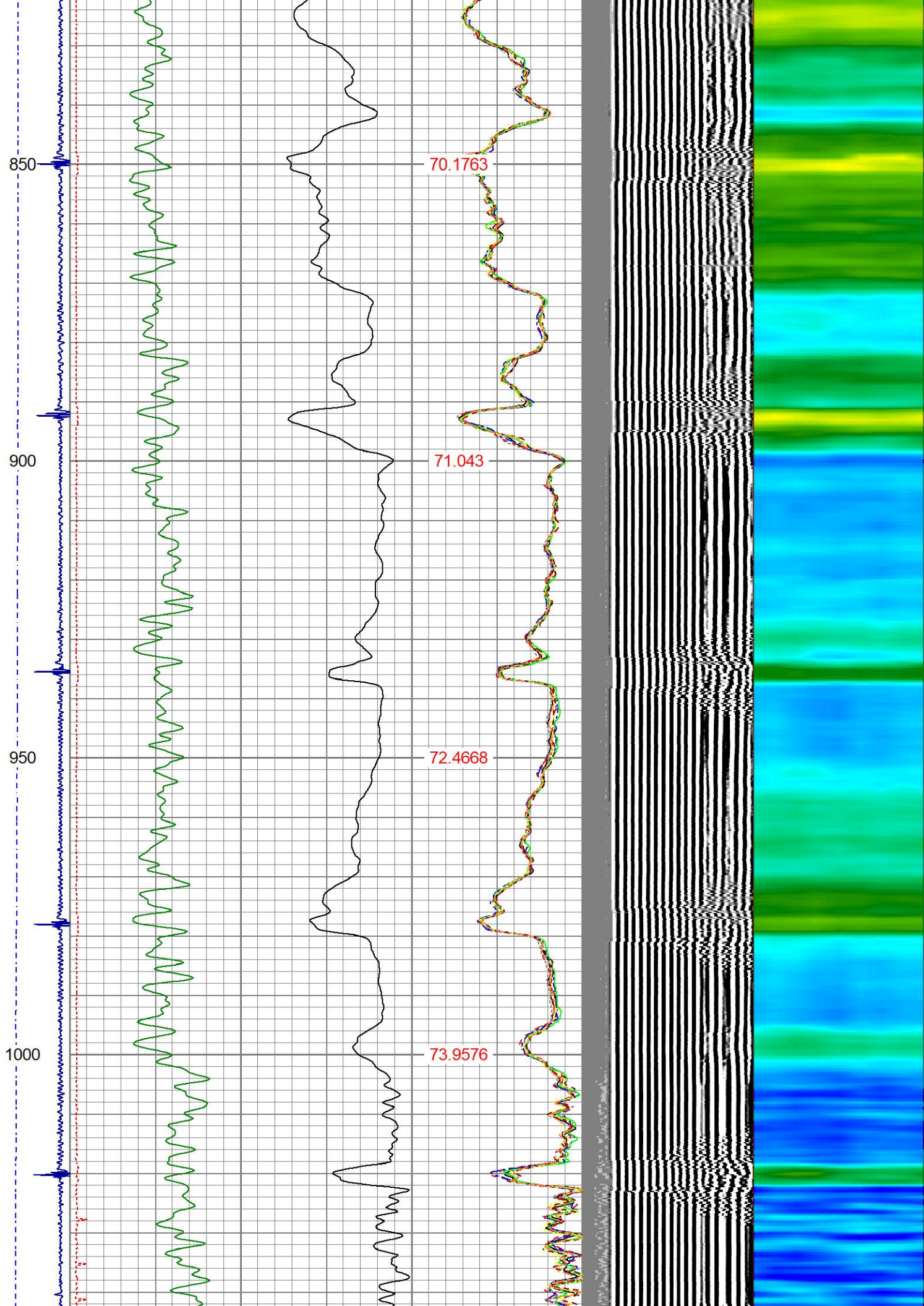
-9	CCL	1	200	TT (usec)	1000	0	AMP (mV)	100	0	AMPS1	100	200	VDL (usec)	1200	1	Cement Map	8	
	LSPD		0	GR (GAPI)	200	0	AMPx5 (mV)	20	0	AMPS2	100							
	(ft/min)		200	GR (GAPI)	400				0	AMPS3	100							
0		250							0	AMPS4	100							
									0	AMPS5	100							
									0	AMPS6	100							
									0	AMPS7	100							
									0	AMPS8	100							
										TEMP								
										(degF)								

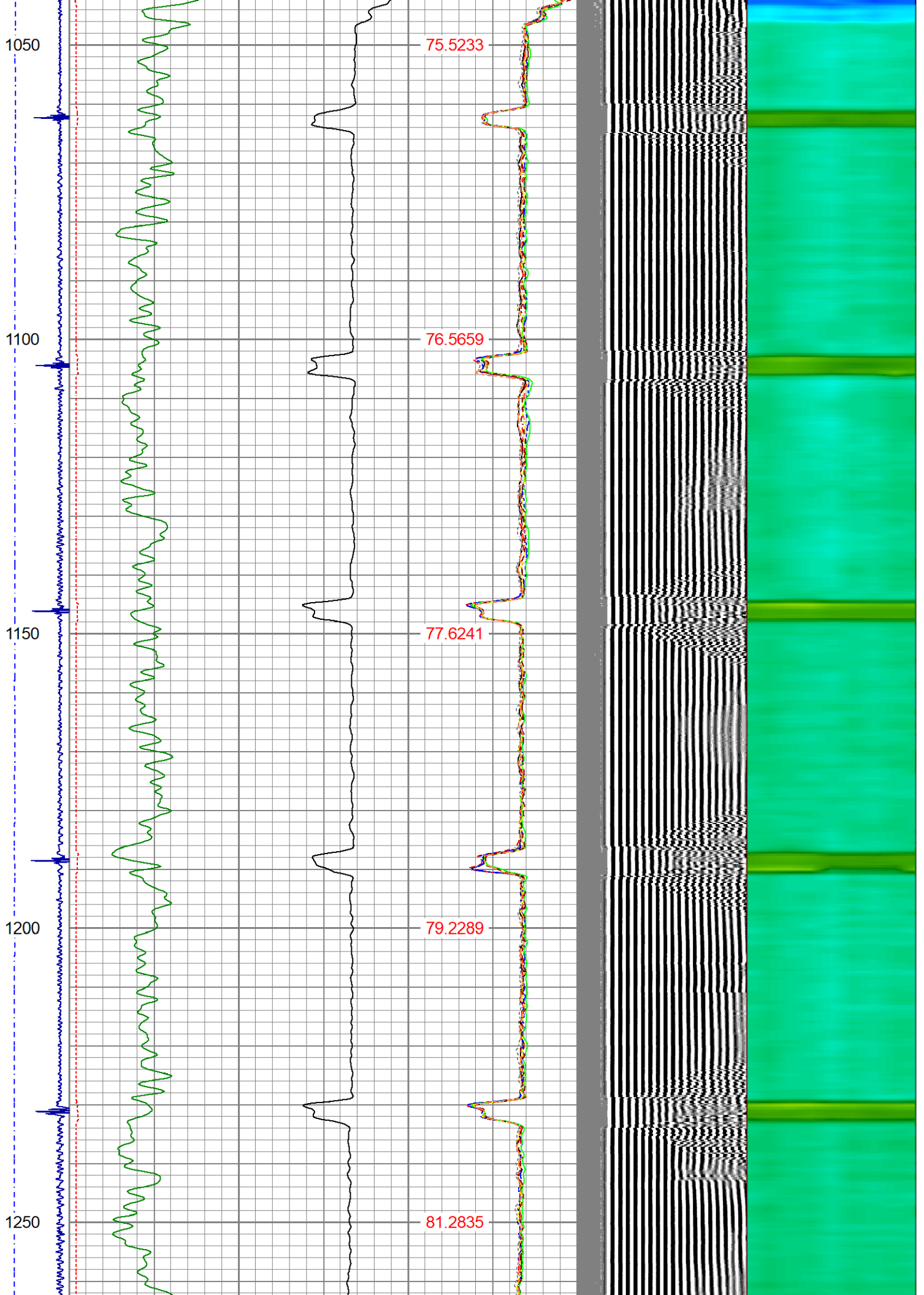


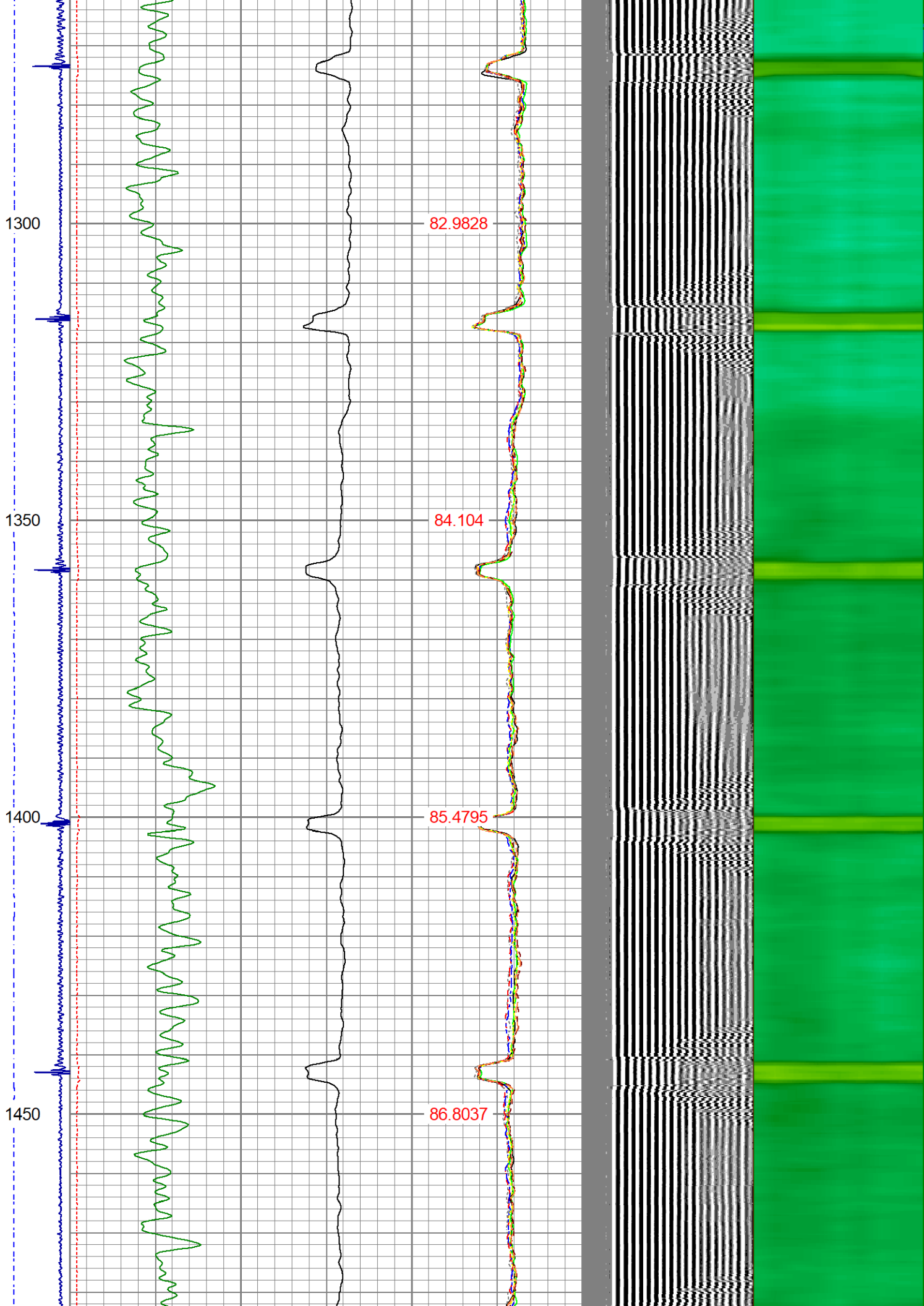


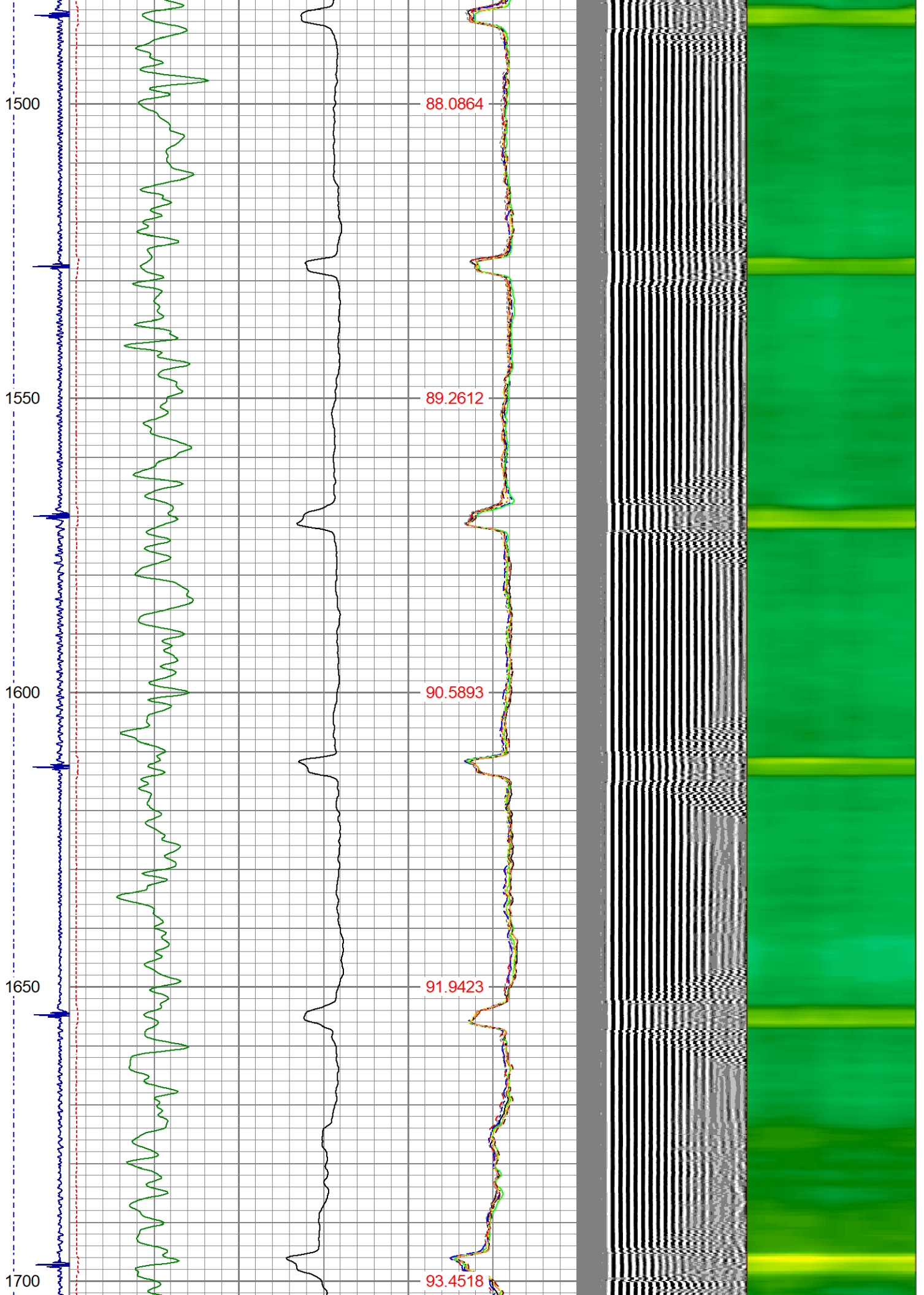


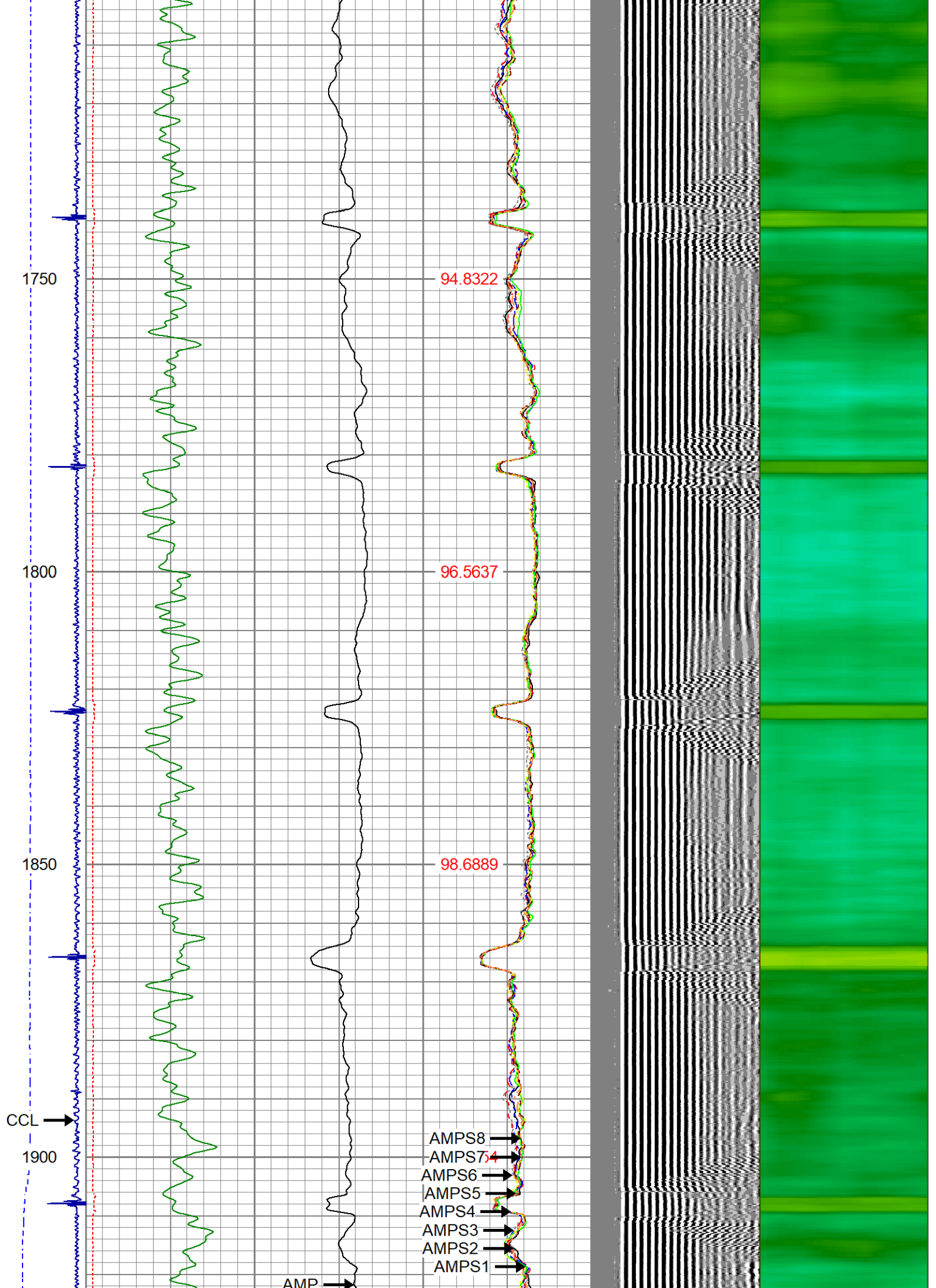


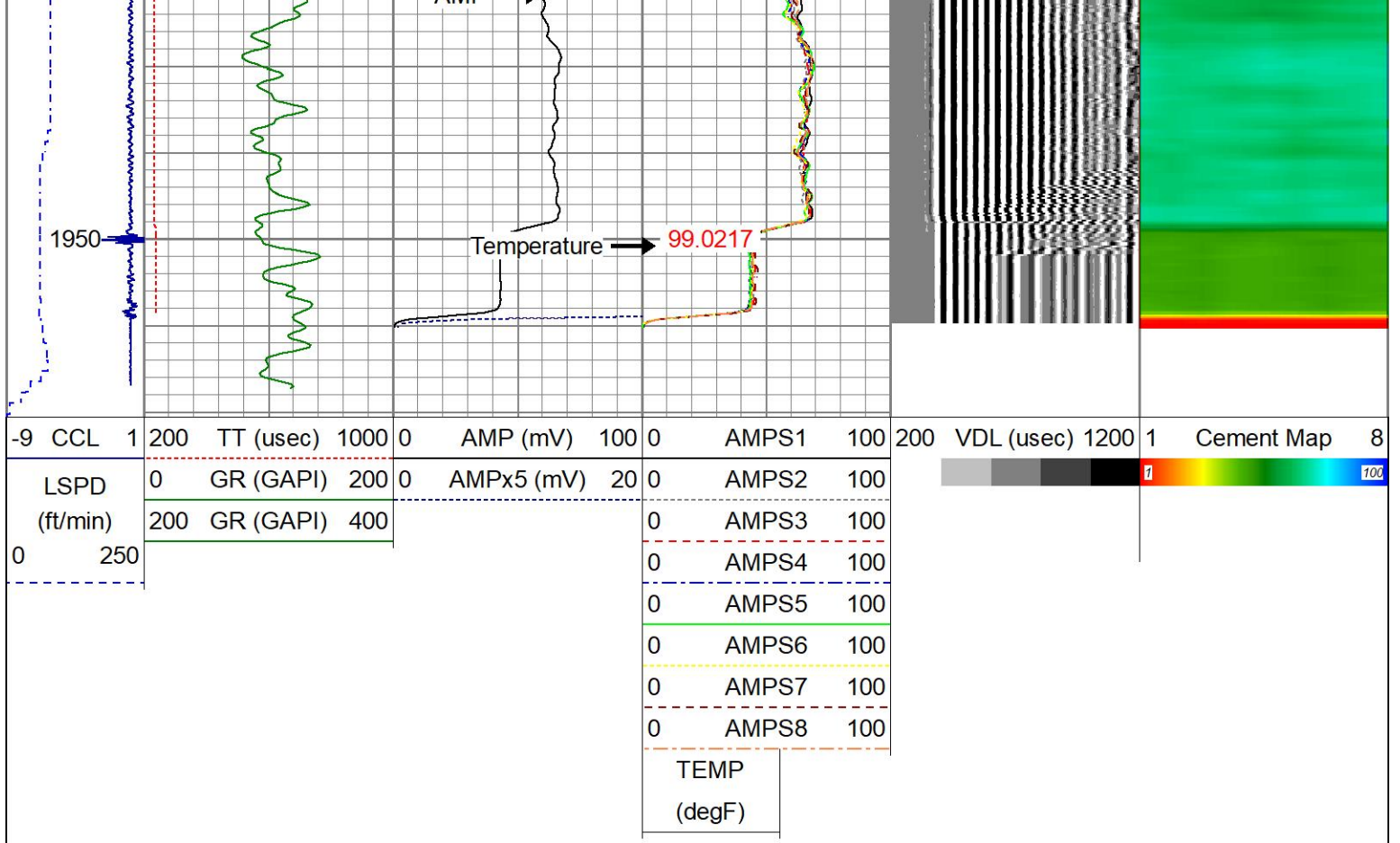












Calibration Report

Database File herbst 1.db
 Dataset Pathname pass11
 Dataset Creation Tue Nov 08 09:08:15 2022

Gamma Ray Calibration Report

Serial Number: 27GRL10-XXXX
 Tool Model: 27GRL10
 Performed: (Not Performed)

Calibrator Value: 1.0 GAPI

Background Reading: 0.0 cps
 Calibrator Reading: 1.0 cps

Sensitivity: 1.0000 GAPI/cps

Segmented Cement Bond Log Calibration Report

Serial Number: Greeley Ext Temp
 Tool Model: 27SBT10

Calibration Casing Diameter: 4.500 in
 Calibration Depth: 1112.345 ft

Master Calibration, performed (Derived):

	Raw (v)		Calibrated (mv)		Results	
	Zero	Cal	Zero	Cal	Gain	Offset
3'	-0.001	0.856	0.250	81.196	94.448	0.374
CAL	0.003	1.007				
5'	-0.002	0.633	0.250	81.196	127.469	0.539

SUM							
S1	-0.004	0.822	0.000	81.196	98.336	0.385	
S2	-0.000	0.923	0.000	81.196	87.992	0.008	
S3	-0.003	0.969	0.000	81.196	83.528	0.245	
S4	-0.001	0.917	0.000	81.196	88.445	0.052	
S5	-0.001	0.825	0.000	81.196	98.312	0.114	
S6	-0.001	0.807	0.000	81.196	100.559	0.091	
S7	-0.005	0.787	0.000	81.196	102.455	0.516	
S8	-0.007	0.803	0.000	81.196	100.289	0.673	

Internal Reference Calibration, performed Thu Jun 23 09:23:51 2022:

	Raw (v)		Calibrated (v)		Results	
	Zero	Cal	Zero	Cal	Gain	Offset
CAL	0.000	0.000	0.003	1.007	1.000	0.000

Air Zero Calibration, performed Tue Nov 8 08:17:21 2022:

	Raw (v)		Calibrated (v)		Results	
	Zero		Zero		Offset	
3'	0.000		0.000		0.000	
5'	0.000		0.000		0.000	
SUM						
S1	0.000		0.000		0.000	
S2	0.000		0.000		0.000	
S3	0.000		0.000		0.000	
S4	0.000		0.000		0.000	
S5	0.000		0.000		0.000	
S6	0.000		0.000		0.000	
S7	0.000		0.000		0.000	
S8	0.000		0.000		0.000	



Company	CHEVRON		
Well	HERBST #1		
Field	WATTENBERG		
County	WELD		
State	CO	Country	USA