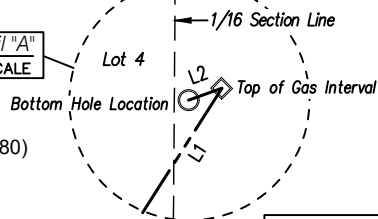






NOTES:

- Detail "A"
NO SCALE

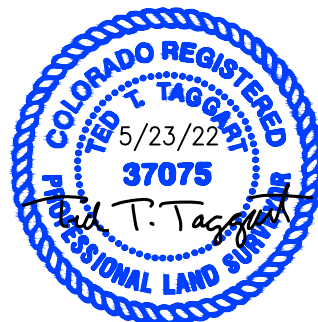


LEGEND

-  SECTION CORNER LOCATED
-  SURFACE HOLE LOCATION
-  BOTTOM HOLE LOCATION
-  TOP OF GAS INTERVAL

E: 2455502.53

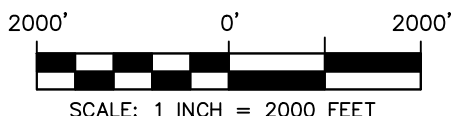
This is to certify that the this plat was prepared from field notes taken during an actual survey made by me or under my supervision and that the location has been staked on the ground as shown on the plat and that the same are true and correct to the best of my knowledge and belief.



Ted T. Taggart, Registered Land Surveyor
Registration No., 37075 State of Colorado

ELU A18 FED 15B-7 495 WELL
LOT 3 (NW1/4 NW1/4),
SECTION 18, T4S, R95W, 6TH P.M.
RIO BLANCO COUNTY, COLORADO

SURVEYED BY: JT/BT	DATE: 5/06/22	
DRAWN BY: SGT	DATE: 5/23/22	PROJECT NO: 20-13-04



WASATCH SURVEYING ASSOCIATES
906 MAIN STREET, EVANSTON, WY 82930
(307) 789-4545