

Project: Rio Blanco County, CO  
 Site: ELU A18 495 Pad  
 Well: ELU A18 FED 15B-7 495  
 Wellbore: Wellbore #1  
 Design: Design #2  
 Latitude: 39.709070  
 Longitude: -108.104168  
 Ground Level: 8029.0  
 RKB @ 8059.0usft (30')

# PROJECT DETAILS: Rio Blanco County, CO

Geodetic System: Universal Transverse Mercator (US Survey Feet)  
 Datum: NAD 1927 - Western US  
 Ellipsoid: Clarke 1866  
 Zone: Zone 12N (114 W to 108 W)  
 System Datum: Mean Sea Level

## REFERENCE INFORMATION

Vertical (TVD) Reference: RKB @ 8059.0usft (30')  
 Section (VS) Reference: Slot - 15B-7(0.0N, 0.0E)  
 Measured Depth Reference: RKB @ 8059.0usft (30')  
 Calculation Method: Minimum Curvature

## SECTION DETAILS

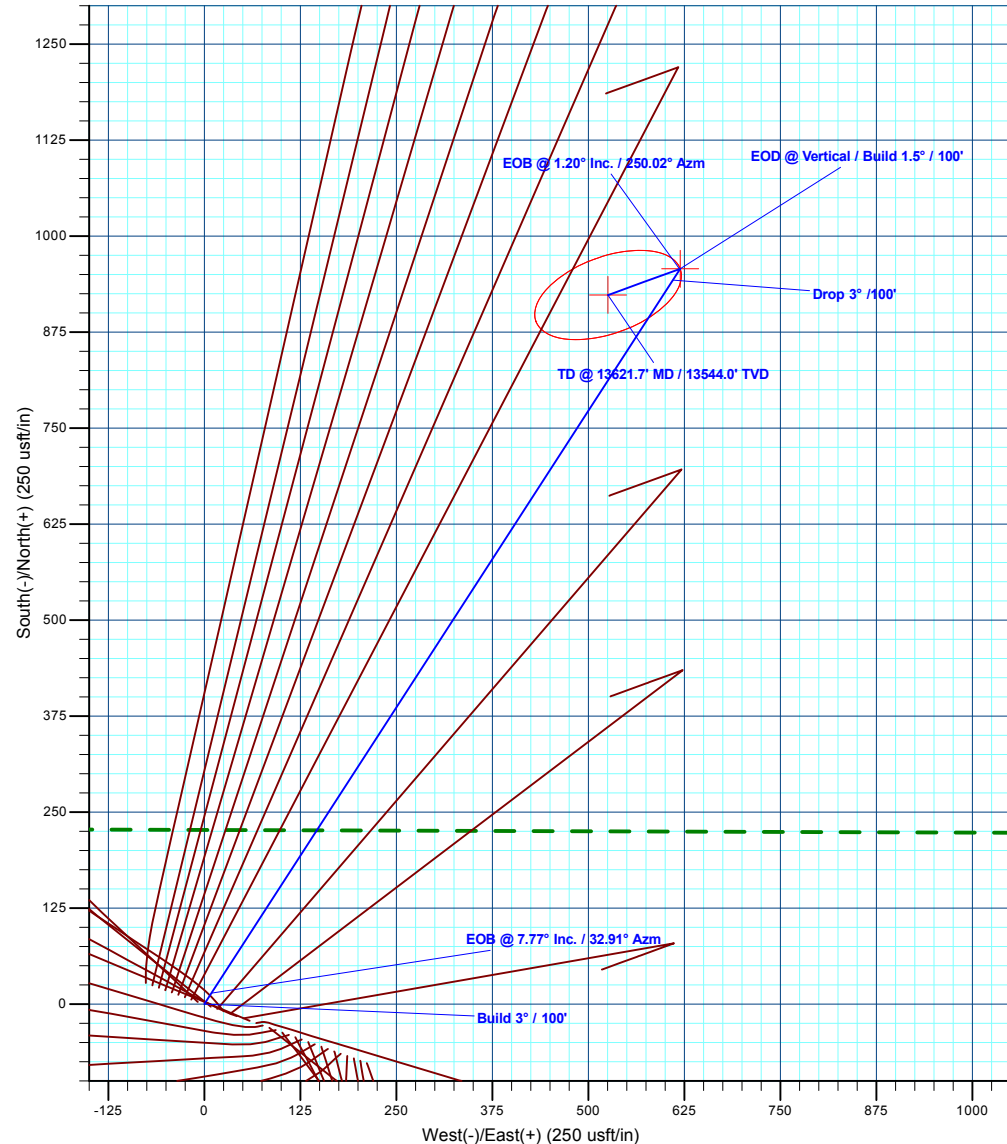
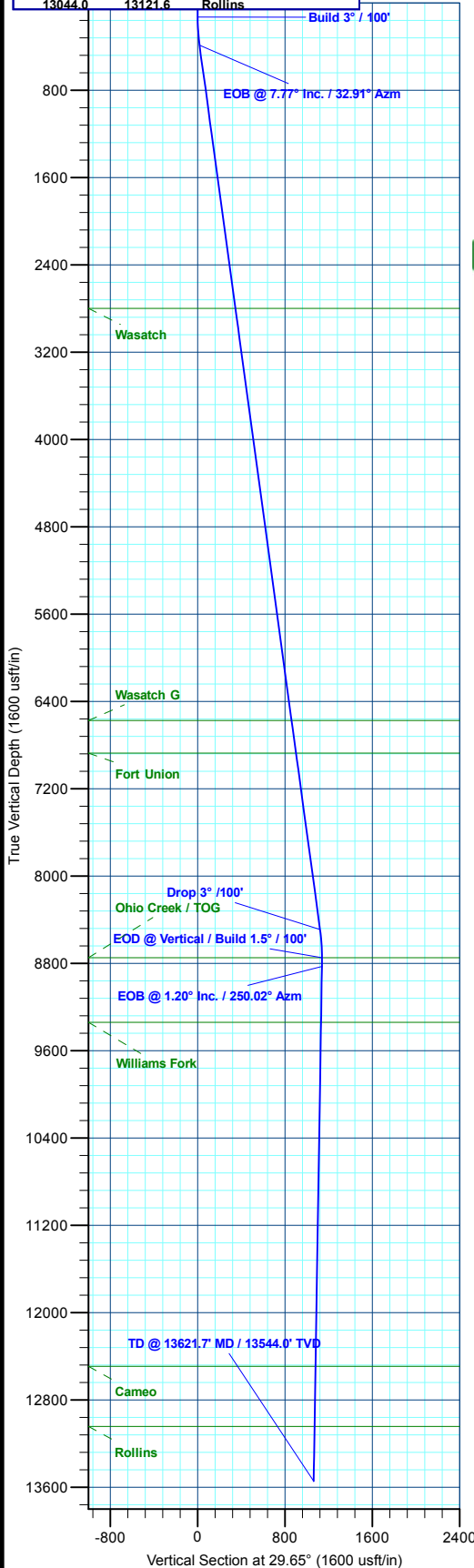
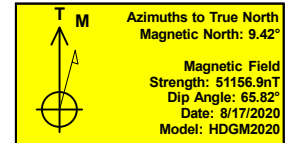
MD	Inc	Azi	TVD	+N/-S	+E/-W	Dleg	TFace	VSect	Annotation
0.0	0.00	0.00	0.0	0.0	0.0	0.00	0.00	0.0	
130.0	0.00	0.00	130.0	0.0	0.0	0.00	0.00	0.0	Build 3° / 100'
389.0	7.77	32.91	388.2	14.7	9.5	3.00	32.91	17.5	EOB @ 7.77° Inc. / 32.91° Azm
8566.7	7.77	32.91	8490.8	943.0	610.2	0.00	0.00	1121.3	Drop 3° / 100'
8825.7	0.00	0.00	8749.0	957.7	619.7	3.00	180.00	1138.8	EOD @ Vertical / Build 1.5° / 100'
8906.0	1.20	250.02	8829.3	957.4	618.9	1.50	250.02	1138.2	EOB @ 1.20° Inc. / 250.02° Azm
13621.7	1.20	250.02	13544.0	923.5	525.7	0.00	0.00	1062.7	TD @ 13621.7' MD / 13544.0' TVD

## DESIGN TARGET DETAILS

Name	TVD	+N/-S	+E/-W	Northing	Easting	Latitude	Longitude
15B-7 - OHCR	8749.0	957.7	619.7	14434243.29	2455502.53	39.711698	-108.101966
15B-7 - PBHL	13544.0	923.5	525.7	14434206.10	2455409.70	39.711604	-108.102300

## WELL DETAILS: ELU A18 FED 15B-7 495

+N/-S	+E/-W	Ground Level : 8029.0	Northing	Easting	Latitude	Longitude
					39.709070	-108.104168
						15B-7



Plan: Design #2 (ELU A18 FED 15B-7 495/Wellbore #1)

Created By: Will Jircik

Date: 13:19, May 18 2022



## **Caerus Oil & Gas**

**Rio Blanco County, CO**

**ELU A18 495 Pad**

**ELU A18 FED 15B-7 495 - Slot 15B-7**

**Wellbore #1**

**Plan: Design #2**

## **KLX Well Planning Report**

**18 May, 2022**



<b>Database:</b>	EDM 5000.1 Single User Db	<b>Local Co-ordinate Reference:</b>	Well ELU A18 FED 15B-7 495 - Slot 15B-7
<b>Company:</b>	Caerus Oil & Gas	<b>TVD Reference:</b>	RKB @ 8059.0usft (30')
<b>Project:</b>	Rio Blanco County, CO	<b>MD Reference:</b>	RKB @ 8059.0usft (30')
<b>Site:</b>	ELU A18 495 Pad	<b>North Reference:</b>	True
<b>Well:</b>	ELU A18 FED 15B-7 495	<b>Survey Calculation Method:</b>	Minimum Curvature
<b>Wellbore:</b>	Wellbore #1		
<b>Design:</b>	Design #2		

<b>Project</b>	Rio Blanco County, CO		
<b>Map System:</b>	Universal Transverse Mercator (US Survey Fee	<b>System Datum:</b>	Mean Sea Level
<b>Geo Datum:</b>	NAD 1927 - Western US		
<b>Map Zone:</b>	Zone 12N (114 W to 108 W)		

Site		ELU A18 495 Pad				
Site Position:		Northing:	14,433,279.80 usft	Latitude:	39.709109	
From:	Map	Easting:	2,454,904.40 usft	Longitude:	-108.104201	
Position Uncertainty:		0.0 usft	Slot Radius:	13-3/16 "	Grid Convergence:	1.85 °

Well	ELU A18 FED 15B-7 495 - Slot 15B-7					
Well Position	+N/-S	-14.0 usft	Northing:	14,433,266.09 usft	Latitude:	39.709070
	+E/-W	9.3 usft	Easting:	2,454,914.10 usft	Longitude:	-108.104168
Position Uncertainty		0.0 usft	Wellhead Elevation:		Ground Level:	8,029.0 usft

<b>Wellbore</b>	Wellbore #1				
<b>Magnetics</b>	<b>Model Name</b>	<b>Sample Date</b>	<b>Declination (°)</b>	<b>Dip Angle (°)</b>	<b>Field Strength (nT)</b>
	HDGM2020	8/17/2020	9.42	65.82	51,156.90000000

<b>Design</b>	Design #2			
<b>Audit Notes:</b>				
<b>Version:</b>	<b>Phase:</b>	PLAN	<b>Tie On Depth:</b>	0.0
<b>Vertical Section:</b>	<b>Depth From (TVD) (usft)</b>	<b>+N/-S (usft)</b>	<b>+E/-W (usft)</b>	<b>Direction (°)</b>
	0.0	0.0	0.0	29.65

<b>Plan Sections</b>										
Measured Depth (usft)	Inclination (°)	Azimuth (°)	Vertical Depth (usft)	+N/-S (usft)	+E/-W (usft)	Dogleg Rate (°/100usft)	Build Rate (°/100usft)	Turn Rate (°/100usft)	TFO (°)	Target
0.0	0.00	0.00	0.0	0.0	0.0	0.00	0.00	0.00	0.00	
130.0	0.00	0.00	130.0	0.0	0.0	0.00	0.00	0.00	0.00	
389.0	7.77	32.91	388.2	14.7	9.5	3.00	3.00	0.00	32.91	
8,566.7	7.77	32.91	8,490.8	943.0	610.2	0.00	0.00	0.00	0.00	
8,825.7	0.00	0.00	8,749.0	957.7	619.7	3.00	-3.00	0.00	180.00	15B-7 - OHCR
8,906.0	1.20	250.02	8,829.3	957.4	618.9	1.50	1.50	-136.92	250.02	
13,621.7	1.20	250.02	13,544.0	923.5	525.7	0.00	0.00	0.00	0.00	15B-7 - PBHL

<b>Database:</b>	EDM 5000.1 Single User Db	<b>Local Co-ordinate Reference:</b>	Well ELU A18 FED 15B-7 495 - Slot 15B-7
<b>Company:</b>	Caerus Oil & Gas	<b>TVD Reference:</b>	RKB @ 8059.0usft (30')
<b>Project:</b>	Rio Blanco County, CO	<b>MD Reference:</b>	RKB @ 8059.0usft (30')
<b>Site:</b>	ELU A18 495 Pad	<b>North Reference:</b>	True
<b>Well:</b>	ELU A18 FED 15B-7 495	<b>Survey Calculation Method:</b>	Minimum Curvature
<b>Wellbore:</b>	Wellbore #1		
<b>Design:</b>	Design #2		

Planned Survey									
Measured Depth (usft)	Inclination (°)	Azimuth (°)	Vertical Depth (usft)	+N/-S (usft)	+E/-W (usft)	Vertical Section (usft)	Dogleg Rate (°/100usft)	Build Rate (°/100usft)	Turn Rate (°/100usft)
0.0	0.00	0.00	0.0	0.0	0.0	0.0	0.00	0.00	0.00
100.0	0.00	0.00	100.0	0.0	0.0	0.0	0.00	0.00	0.00
<b>Build 3° / 100'</b>									
130.0	0.00	0.00	130.0	0.0	0.0	0.0	0.00	0.00	0.00
200.0	2.10	32.91	200.0	1.1	0.7	1.3	3.00	3.00	0.00
300.0	5.10	32.91	299.8	6.3	4.1	7.5	3.00	3.00	0.00
<b>EOB @ 7.77° Inc. / 32.91° Azm</b>									
389.0	7.77	32.91	388.2	14.7	9.5	17.5	3.00	3.00	0.00
400.0	7.77	32.91	399.1	16.0	10.3	19.0	0.00	0.00	0.00
500.0	7.77	32.91	498.2	27.3	17.7	32.5	0.00	0.00	0.00
600.0	7.77	32.91	597.3	38.7	25.0	46.0	0.00	0.00	0.00
700.0	7.77	32.91	696.4	50.0	32.4	59.5	0.00	0.00	0.00
800.0	7.77	32.91	795.4	61.4	39.7	73.0	0.00	0.00	0.00
900.0	7.77	32.91	894.5	72.7	47.1	86.5	0.00	0.00	0.00
1,000.0	7.77	32.91	993.6	84.1	54.4	100.0	0.00	0.00	0.00
1,100.0	7.77	32.91	1,092.7	95.4	61.7	113.5	0.00	0.00	0.00
1,200.0	7.77	32.91	1,191.8	106.8	69.1	127.0	0.00	0.00	0.00
1,300.0	7.77	32.91	1,290.8	118.1	76.4	140.5	0.00	0.00	0.00
1,400.0	7.77	32.91	1,389.9	129.5	83.8	154.0	0.00	0.00	0.00
1,500.0	7.77	32.91	1,489.0	140.8	91.1	167.5	0.00	0.00	0.00
1,600.0	7.77	32.91	1,588.1	152.2	98.5	181.0	0.00	0.00	0.00
1,700.0	7.77	32.91	1,687.2	163.5	105.8	194.5	0.00	0.00	0.00
1,800.0	7.77	32.91	1,786.3	174.9	113.2	208.0	0.00	0.00	0.00
1,900.0	7.77	32.91	1,885.3	186.2	120.5	221.5	0.00	0.00	0.00
2,000.0	7.77	32.91	1,984.4	197.6	127.9	235.0	0.00	0.00	0.00
2,100.0	7.77	32.91	2,083.5	208.9	135.2	248.5	0.00	0.00	0.00
2,200.0	7.77	32.91	2,182.6	220.3	142.5	262.0	0.00	0.00	0.00
2,300.0	7.77	32.91	2,281.7	231.6	149.9	275.5	0.00	0.00	0.00
2,400.0	7.77	32.91	2,380.7	243.0	157.2	289.0	0.00	0.00	0.00
2,500.0	7.77	32.91	2,479.8	254.3	164.6	302.5	0.00	0.00	0.00
2,600.0	7.77	32.91	2,578.9	265.7	171.9	316.0	0.00	0.00	0.00
2,700.0	7.77	32.91	2,678.0	277.0	179.3	329.4	0.00	0.00	0.00
2,800.0	7.77	32.91	2,777.1	288.4	186.6	342.9	0.00	0.00	0.00
<b>Wasatch</b>									
2,823.1	7.77	32.91	2,800.0	291.0	188.3	346.1	0.00	0.00	0.00
2,900.0	7.77	32.91	2,876.2	299.7	194.0	356.4	0.00	0.00	0.00
3,000.0	7.77	32.91	2,975.2	311.1	201.3	369.9	0.00	0.00	0.00
3,100.0	7.77	32.91	3,074.3	322.4	208.6	383.4	0.00	0.00	0.00
3,200.0	7.77	32.91	3,173.4	333.8	216.0	396.9	0.00	0.00	0.00
3,300.0	7.77	32.91	3,272.5	345.1	223.3	410.4	0.00	0.00	0.00
3,400.0	7.77	32.91	3,371.6	356.5	230.7	423.9	0.00	0.00	0.00
3,500.0	7.77	32.91	3,470.6	367.8	238.0	437.4	0.00	0.00	0.00
3,600.0	7.77	32.91	3,569.7	379.2	245.4	450.9	0.00	0.00	0.00
3,700.0	7.77	32.91	3,668.8	390.5	252.7	464.4	0.00	0.00	0.00
3,800.0	7.77	32.91	3,767.9	401.9	260.1	477.9	0.00	0.00	0.00
3,900.0	7.77	32.91	3,867.0	413.3	267.4	491.4	0.00	0.00	0.00
4,000.0	7.77	32.91	3,966.1	424.6	274.7	504.9	0.00	0.00	0.00
4,100.0	7.77	32.91	4,065.1	436.0	282.1	518.4	0.00	0.00	0.00
4,200.0	7.77	32.91	4,164.2	447.3	289.4	531.9	0.00	0.00	0.00
4,300.0	7.77	32.91	4,263.3	458.7	296.8	545.4	0.00	0.00	0.00
4,400.0	7.77	32.91	4,362.4	470.0	304.1	558.9	0.00	0.00	0.00
4,500.0	7.77	32.91	4,461.5	481.4	311.5	572.4	0.00	0.00	0.00
4,600.0	7.77	32.91	4,560.5	492.7	318.8	585.9	0.00	0.00	0.00

<b>Database:</b>	EDM 5000.1 Single User Db	<b>Local Co-ordinate Reference:</b>	Well ELU A18 FED 15B-7 495 - Slot 15B-7
<b>Company:</b>	Caerus Oil & Gas	<b>TVD Reference:</b>	RKB @ 8059.0usft (30')
<b>Project:</b>	Rio Blanco County, CO	<b>MD Reference:</b>	RKB @ 8059.0usft (30')
<b>Site:</b>	ELU A18 495 Pad	<b>North Reference:</b>	True
<b>Well:</b>	ELU A18 FED 15B-7 495	<b>Survey Calculation Method:</b>	Minimum Curvature
<b>Wellbore:</b>	Wellbore #1		
<b>Design:</b>	Design #2		

Planned Survey									
Measured Depth (usft)	Inclination (°)	Azimuth (°)	Vertical Depth (usft)	+N/-S (usft)	+E/-W (usft)	Vertical Section (usft)	Dogleg Rate (°/100usft)	Build Rate (°/100usft)	Turn Rate (°/100usft)
4,700.0	7.77	32.91	4,659.6	504.1	326.2	599.4	0.00	0.00	0.00
4,800.0	7.77	32.91	4,758.7	515.4	333.5	612.9	0.00	0.00	0.00
4,900.0	7.77	32.91	4,857.8	526.8	340.9	626.4	0.00	0.00	0.00
5,000.0	7.77	32.91	4,956.9	538.1	348.2	639.9	0.00	0.00	0.00
5,100.0	7.77	32.91	5,056.0	549.5	355.5	653.4	0.00	0.00	0.00
5,200.0	7.77	32.91	5,155.0	560.8	362.9	666.9	0.00	0.00	0.00
5,300.0	7.77	32.91	5,254.1	572.2	370.2	680.4	0.00	0.00	0.00
5,400.0	7.77	32.91	5,353.2	583.5	377.6	693.9	0.00	0.00	0.00
5,500.0	7.77	32.91	5,452.3	594.9	384.9	707.4	0.00	0.00	0.00
5,600.0	7.77	32.91	5,551.4	606.2	392.3	720.9	0.00	0.00	0.00
5,700.0	7.77	32.91	5,650.4	617.6	399.6	734.4	0.00	0.00	0.00
5,800.0	7.77	32.91	5,749.5	628.9	407.0	747.9	0.00	0.00	0.00
5,900.0	7.77	32.91	5,848.6	640.3	414.3	761.4	0.00	0.00	0.00
6,000.0	7.77	32.91	5,947.7	651.6	421.6	774.9	0.00	0.00	0.00
6,100.0	7.77	32.91	6,046.8	663.0	429.0	788.4	0.00	0.00	0.00
6,200.0	7.77	32.91	6,145.9	674.3	436.3	801.9	0.00	0.00	0.00
6,300.0	7.77	32.91	6,244.9	685.7	443.7	815.4	0.00	0.00	0.00
6,400.0	7.77	32.91	6,344.0	697.0	451.0	828.9	0.00	0.00	0.00
6,500.0	7.77	32.91	6,443.1	708.4	458.4	842.4	0.00	0.00	0.00
6,600.0	7.77	32.91	6,542.2	719.7	465.7	855.9	0.00	0.00	0.00
<b>Wasatch G</b>									
6,633.1	7.77	32.91	6,575.0	723.5	468.1	860.3	0.00	0.00	0.00
6,700.0	7.77	32.91	6,641.3	731.1	473.1	869.4	0.00	0.00	0.00
6,800.0	7.77	32.91	6,740.3	742.4	480.4	882.9	0.00	0.00	0.00
6,900.0	7.77	32.91	6,839.4	753.8	487.7	896.4	0.00	0.00	0.00
<b>Fort Union</b>									
6,935.9	7.77	32.91	6,875.0	757.9	490.4	901.2	0.00	0.00	0.00
7,000.0	7.77	32.91	6,938.5	765.1	495.1	909.9	0.00	0.00	0.00
7,100.0	7.77	32.91	7,037.6	776.5	502.4	923.4	0.00	0.00	0.00
7,200.0	7.77	32.91	7,136.7	787.8	509.8	936.9	0.00	0.00	0.00
7,300.0	7.77	32.91	7,235.8	799.2	517.1	950.4	0.00	0.00	0.00
7,400.0	7.77	32.91	7,334.8	810.5	524.5	963.9	0.00	0.00	0.00
7,500.0	7.77	32.91	7,433.9	821.9	531.8	977.4	0.00	0.00	0.00
7,600.0	7.77	32.91	7,533.0	833.2	539.2	990.9	0.00	0.00	0.00
7,700.0	7.77	32.91	7,632.1	844.6	546.5	1,004.4	0.00	0.00	0.00
7,800.0	7.77	32.91	7,731.2	855.9	553.9	1,017.9	0.00	0.00	0.00
7,900.0	7.77	32.91	7,830.2	867.3	561.2	1,031.4	0.00	0.00	0.00
8,000.0	7.77	32.91	7,929.3	878.6	568.5	1,044.9	0.00	0.00	0.00
8,100.0	7.77	32.91	8,028.4	890.0	575.9	1,058.3	0.00	0.00	0.00
8,200.0	7.77	32.91	8,127.5	901.3	583.2	1,071.8	0.00	0.00	0.00
8,300.0	7.77	32.91	8,226.6	912.7	590.6	1,085.3	0.00	0.00	0.00
8,400.0	7.77	32.91	8,325.7	924.0	597.9	1,098.8	0.00	0.00	0.00
8,500.0	7.77	32.91	8,424.7	935.4	605.3	1,112.3	0.00	0.00	0.00
<b>Drop 3° /100'</b>									
8,566.7	7.77	32.91	8,490.8	943.0	610.2	1,121.3	0.00	0.00	0.00
8,600.0	6.77	32.91	8,523.9	946.5	612.5	1,125.6	3.00	-3.00	0.00
8,700.0	3.77	32.91	8,623.4	954.2	617.4	1,134.7	3.00	-3.00	0.00
8,800.0	0.77	32.91	8,723.3	957.5	619.6	1,138.7	3.00	-3.00	0.00
<b>EOD @ Vertical / Build 1.5° / 100' - Ohio Creek / TOG</b>									
8,825.7	0.00	0.00	8,749.0	957.7	619.7	1,138.8	3.00	-3.00	0.00
<b>EOB @ 1.20° Inc. / 250.02° Azm</b>									
8,906.0	1.20	250.02	8,829.3	957.4	618.9	1,138.2	1.50	1.50	0.00
9,000.0	1.20	250.02	8,923.3	956.7	617.0	1,136.7	0.00	0.00	0.00
9,100.0	1.20	250.02	9,023.3	956.0	615.1	1,135.1	0.00	0.00	0.00

<b>Database:</b>	EDM 5000.1 Single User Db	<b>Local Co-ordinate Reference:</b>	Well ELU A18 FED 15B-7 495 - Slot 15B-7
<b>Company:</b>	Caerus Oil & Gas	<b>TVD Reference:</b>	RKB @ 8059.0usft (30')
<b>Project:</b>	Rio Blanco County, CO	<b>MD Reference:</b>	RKB @ 8059.0usft (30')
<b>Site:</b>	ELU A18 495 Pad	<b>North Reference:</b>	True
<b>Well:</b>	ELU A18 FED 15B-7 495	<b>Survey Calculation Method:</b>	Minimum Curvature
<b>Wellbore:</b>	Wellbore #1		
<b>Design:</b>	Design #2		

Planned Survey									
Measured Depth (usft)	Inclination (°)	Azimuth (°)	Vertical Depth (usft)	+N/-S (usft)	+E/-W (usft)	Vertical Section (usft)	Dogleg Rate (°/100usft)	Build Rate (°/100usft)	Turn Rate (°/100usft)
9,200.0	1.20	250.02	9,123.3	955.3	613.1	1,133.5	0.00	0.00	0.00
9,300.0	1.20	250.02	9,223.2	954.6	611.1	1,131.9	0.00	0.00	0.00
9,400.0	1.20	250.02	9,323.2	953.8	609.1	1,130.3	0.00	0.00	0.00
<b>Williams Fork</b>									
9,417.8	1.20	250.02	9,341.0	953.7	608.8	1,130.0	0.00	0.00	0.00
9,500.0	1.20	250.02	9,423.2	953.1	607.2	1,128.7	0.00	0.00	0.00
9,600.0	1.20	250.02	9,523.2	952.4	605.2	1,127.1	0.00	0.00	0.00
9,700.0	1.20	250.02	9,623.1	951.7	603.2	1,125.5	0.00	0.00	0.00
9,800.0	1.20	250.02	9,723.1	951.0	601.2	1,123.9	0.00	0.00	0.00
9,900.0	1.20	250.02	9,823.1	950.3	599.3	1,122.3	0.00	0.00	0.00
10,000.0	1.20	250.02	9,923.1	949.5	597.3	1,120.7	0.00	0.00	0.00
10,100.0	1.20	250.02	10,023.1	948.8	595.3	1,119.1	0.00	0.00	0.00
10,200.0	1.20	250.02	10,123.0	948.1	593.3	1,117.5	0.00	0.00	0.00
10,300.0	1.20	250.02	10,223.0	947.4	591.3	1,115.9	0.00	0.00	0.00
10,400.0	1.20	250.02	10,323.0	946.7	589.4	1,114.3	0.00	0.00	0.00
10,500.0	1.20	250.02	10,423.0	945.9	587.4	1,112.7	0.00	0.00	0.00
10,600.0	1.20	250.02	10,522.9	945.2	585.4	1,111.1	0.00	0.00	0.00
10,700.0	1.20	250.02	10,622.9	944.5	583.4	1,109.5	0.00	0.00	0.00
10,800.0	1.20	250.02	10,722.9	943.8	581.5	1,107.9	0.00	0.00	0.00
10,900.0	1.20	250.02	10,822.9	943.1	579.5	1,106.3	0.00	0.00	0.00
11,000.0	1.20	250.02	10,922.9	942.3	577.5	1,104.7	0.00	0.00	0.00
11,100.0	1.20	250.02	11,022.8	941.6	575.5	1,103.1	0.00	0.00	0.00
11,200.0	1.20	250.02	11,122.8	940.9	573.6	1,101.5	0.00	0.00	0.00
11,300.0	1.20	250.02	11,222.8	940.2	571.6	1,099.9	0.00	0.00	0.00
11,400.0	1.20	250.02	11,322.8	939.5	569.6	1,098.2	0.00	0.00	0.00
11,500.0	1.20	250.02	11,422.7	938.8	567.6	1,096.6	0.00	0.00	0.00
11,600.0	1.20	250.02	11,522.7	938.0	565.7	1,095.0	0.00	0.00	0.00
11,700.0	1.20	250.02	11,622.7	937.3	563.7	1,093.4	0.00	0.00	0.00
11,800.0	1.20	250.02	11,722.7	936.6	561.7	1,091.8	0.00	0.00	0.00
11,900.0	1.20	250.02	11,822.7	935.9	559.7	1,090.2	0.00	0.00	0.00
12,000.0	1.20	250.02	11,922.6	935.2	557.8	1,088.6	0.00	0.00	0.00
12,100.0	1.20	250.02	12,022.6	934.4	555.8	1,087.0	0.00	0.00	0.00
12,200.0	1.20	250.02	12,122.6	933.7	553.8	1,085.4	0.00	0.00	0.00
12,300.0	1.20	250.02	12,222.6	933.0	551.8	1,083.8	0.00	0.00	0.00
12,400.0	1.20	250.02	12,322.6	932.3	549.8	1,082.2	0.00	0.00	0.00
12,500.0	1.20	250.02	12,422.5	931.6	547.9	1,080.6	0.00	0.00	0.00
<b>Cameo</b>									
12,571.5	1.20	250.02	12,494.0	931.1	546.5	1,079.5	0.00	0.00	0.00
12,600.0	1.20	250.02	12,522.5	930.9	545.9	1,079.0	0.00	0.00	0.00
12,700.0	1.20	250.02	12,622.5	930.1	543.9	1,077.4	0.00	0.00	0.00
12,800.0	1.20	250.02	12,722.5	929.4	541.9	1,075.8	0.00	0.00	0.00
12,900.0	1.20	250.02	12,822.4	928.7	540.0	1,074.2	0.00	0.00	0.00
13,000.0	1.20	250.02	12,922.4	928.0	538.0	1,072.6	0.00	0.00	0.00
13,100.0	1.20	250.02	13,022.4	927.3	536.0	1,071.0	0.00	0.00	0.00
<b>Rollins</b>									
13,121.6	1.20	250.02	13,044.0	927.1	535.6	1,070.7	0.00	0.00	0.00
13,200.0	1.20	250.02	13,122.4	926.5	534.0	1,069.4	0.00	0.00	0.00
13,300.0	1.20	250.02	13,222.4	925.8	532.1	1,067.8	0.00	0.00	0.00
13,400.0	1.20	250.02	13,322.3	925.1	530.1	1,066.2	0.00	0.00	0.00
13,500.0	1.20	250.02	13,422.3	924.4	528.1	1,064.6	0.00	0.00	0.00
13,600.0	1.20	250.02	13,522.3	923.7	526.1	1,063.0	0.00	0.00	0.00
<b>TD @ 13621.7' MD / 13544.0' TVD</b>									
13,621.7	1.20	250.02	13,544.0	923.5	525.7	1,062.7	0.00	0.00	0.00

<b>Database:</b>	EDM 5000.1 Single User Db	<b>Local Co-ordinate Reference:</b>	Well ELU A18 FED 15B-7 495 - Slot 15B-7
<b>Company:</b>	Caerus Oil & Gas	<b>TVD Reference:</b>	RKB @ 8059.0usft (30')
<b>Project:</b>	Rio Blanco County, CO	<b>MD Reference:</b>	RKB @ 8059.0usft (30')
<b>Site:</b>	ELU A18 495 Pad	<b>North Reference:</b>	True
<b>Well:</b>	ELU A18 FED 15B-7 495	<b>Survey Calculation Method:</b>	Minimum Curvature
<b>Wellbore:</b>	Wellbore #1		
<b>Design:</b>	Design #2		

#### Design Targets

##### Target Name

- hit/miss target	Dip Angle (°)	Dip Dir. (°)	TVD (usft)	+N/-S (usft)	+E/-W (usft)	Northing (usft)	Easting (usft)	Latitude	Longitude
- Shape									
15B-7 - OHCR	0.00	0.00	8,749.0	957.7	619.7	14,434,243.29	2,455,502.53	39.711698	-108.101966
- plan hits target center									
- Point									
15B-7 - PBHL	0.00	0.00	13,544.0	923.5	525.7	14,434,206.10	2,455,409.70	39.711605	-108.102300
- plan hits target center									
- Ellipse (radii L100.0 W50.0 on 250.00 azi)									

#### Formations

Measured Depth (usft)	Vertical Depth (usft)	Name	Lithology	Dip (°)	Dip Direction (°)
2,823.1	2,800.0	Wasatch			
6,633.1	6,575.0	Wasatch G			
6,935.9	6,875.0	Fort Union			
8,825.7	8,749.0	Ohio Creek / TOG			
9,417.8	9,341.0	Williams Fork			
12,571.5	12,494.0	Cameo			
13,121.6	13,044.0	Rollins			

#### Plan Annotations

Measured Depth (usft)	Vertical Depth (usft)	Local Coordinates		Comment
		+N/-S (usft)	+E/-W (usft)	
130.0	130.0	0.0	0.0	Build 3° / 100'
389.0	388.2	14.7	9.5	EOB @ 7.77° Inc. / 32.91° Azm
8,566.7	8,490.8	943.0	610.2	Drop 3° / 100'
8,825.7	8,749.0	957.7	619.7	EOD @ Vertical / Build 1.5° / 100'
8,906.0	8,829.3	957.4	618.9	EOB @ 1.20° Inc. / 250.02° Azm
13,621.7	13,544.0	923.5	525.7	TD @ 13621.7' MD / 13544.0' TVD